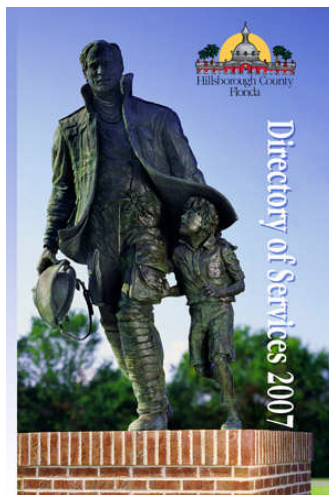


November 16, 2007

**Hillsborough County, Florida
Board of County Commissioners**

Hillsborough County Citizen Satisfaction Survey 2007

**Interviews by Telephone
800 Respondents**



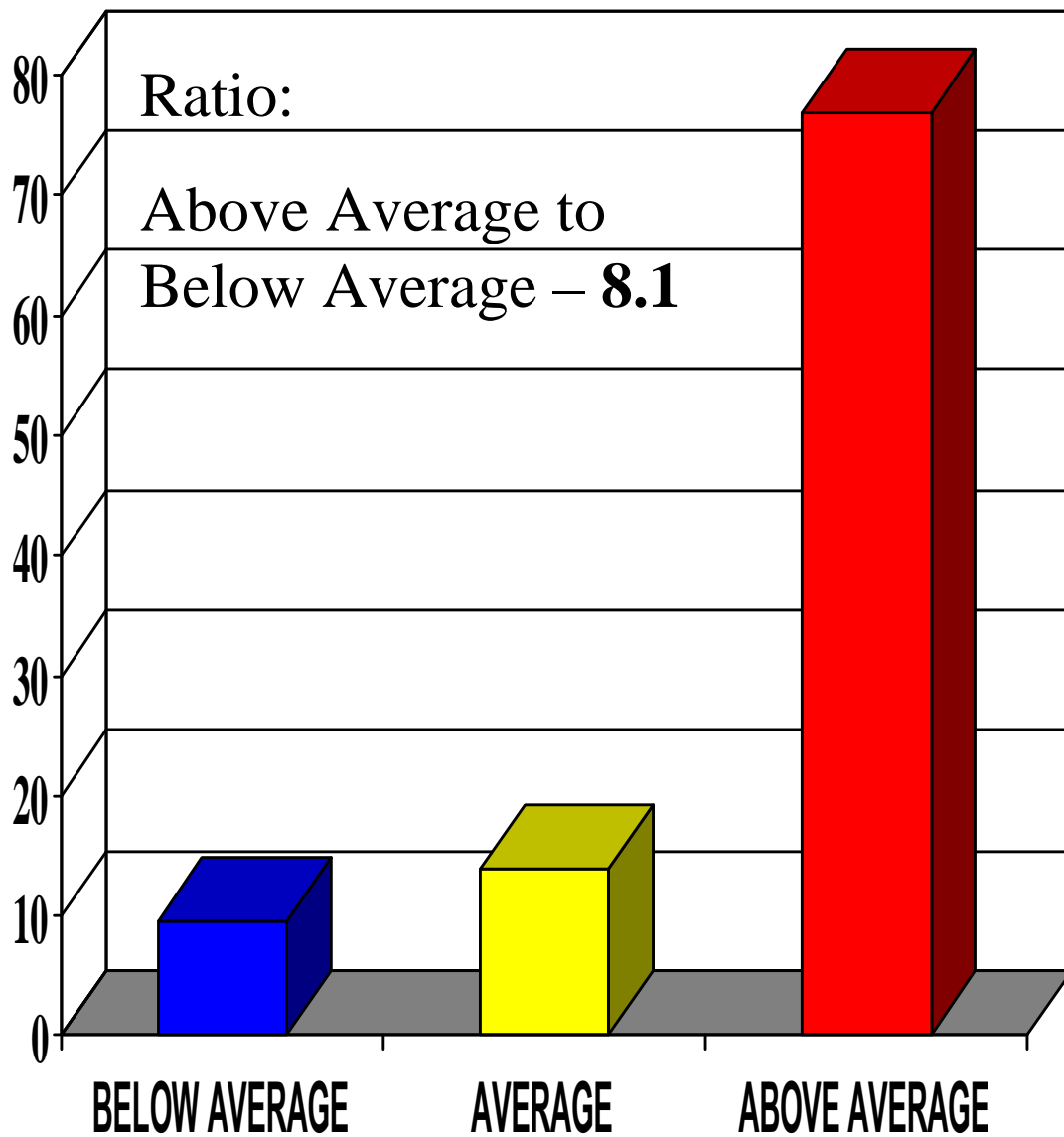
Bamberg-Handley, Inc.

TABLE OF CONTENTS

Quick Glance Charts	
Executive Summary	1
Summary Changes 2005-2007	2
Citizen Satisfaction Highlights	4
Aspects of Life	4
Specific Services	5
Reported Users	7
Comparison of Major Survey Categories – 2007	8
Geographic and Respondent Selection	9
Primary Survey Description	10
Respondent Interviews	10
Completed Survey Data Processing	10
Respondent Demographics and Census 2000	10
African American or Black	11
Municipalities Combined	13
Unincorporated	15
Tampa Only	17
Plant City	19
Temple Terrace	21
Detailed Expanded Ratings – Overall and Selected Categories	23
In General, All Respondents in all Areas	24
Unincorporated	25
Municipalities	27
Tampa	28
Temple Terrace	29
Plant City	31
African American or Black	32

2007 Overall Service Ratings

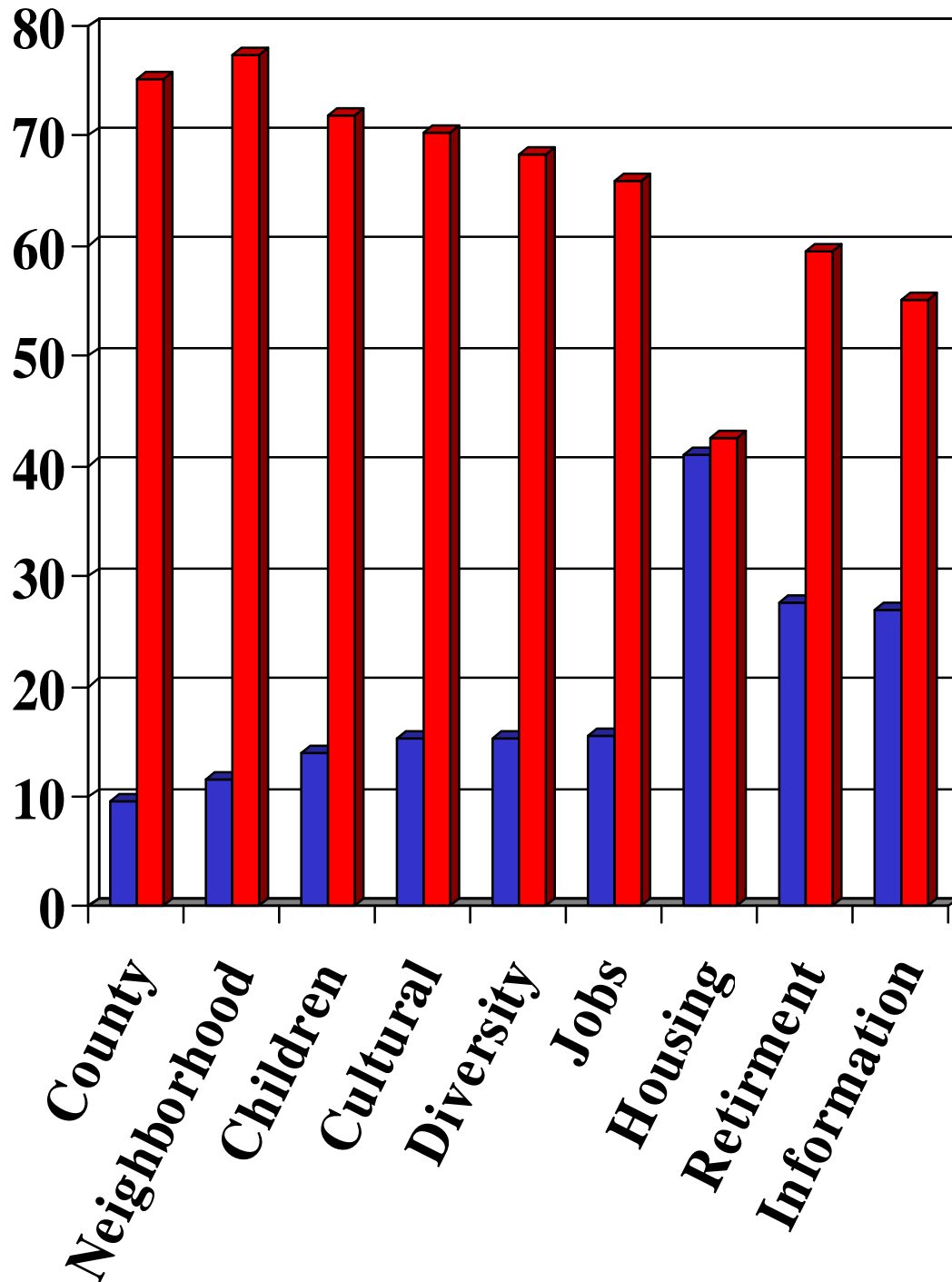
Hillsborough County, 28 Services



2007 Lifestyle Aspects

Percent Below Average Blue

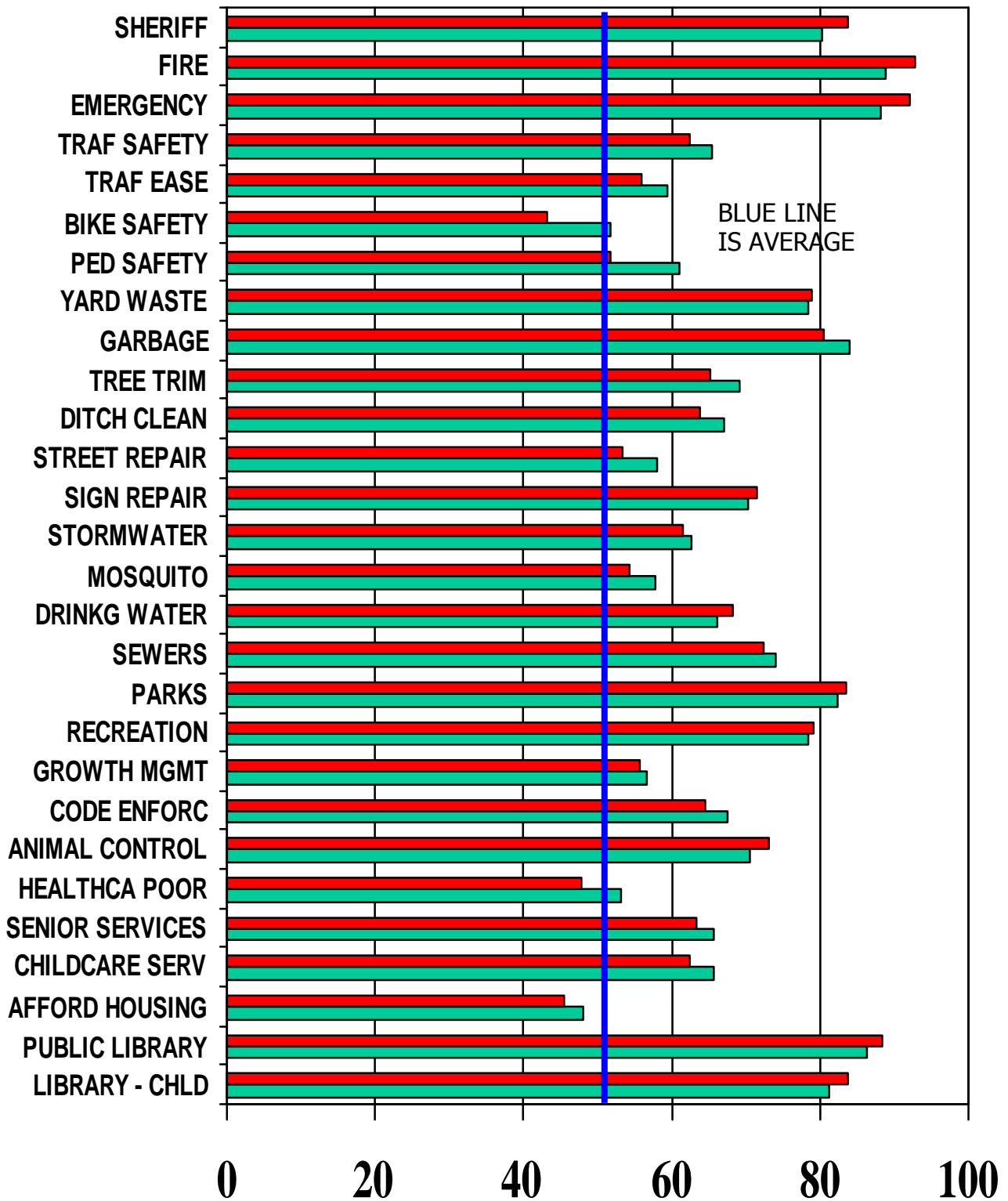
Percent Above Average Red



2007 Specific Services

Red=Performance

Green=Worth



EXECUTIVE SUMMARY

In autumn 2007, 800 randomly selected respondents at listed and unlisted telephone numbers in Hillsborough County, Florida, were queried regarding County governmental services and quality of life in a broader sense. The overall maximum sampling error at a 95 percent confidence level is ± 3.46 percent.

After respondents were asked to provide assessments of 9 aspect of life elements and 28 separate services of the County and had clearly contemplated each, interviewers said this:

“Thank you for these detailed answers. Now, comparing cost to benefit, would you please give me just one rating for the value of all County services together? Again ‘1’ is a poor value and ‘10’ is an excellent value. What is your value rating for County services overall?”

Almost everyone answered... 97.5 percent. In summary form, considering answers only, the results of the additional question for 2007 are as follows:

Below Average	Average	Above Average	Ratio
-----	-----	-----	-----
9.5%	13.8%	76.8%	8.1

The ratio is Above Average divided by Below Average. It shows that 8.1 times as many respondents judged the aggregate of County services to be an above average value as compared to those saying that the aggregate is a below average value. Though still quite high, the rate declined from last year (2006) when the same ratio was 12.7. No exact comparable statistic is available from 2005. The answers and ratios are likely unusually meaningful since each respondent had necessarily considered every underlying service when the question was asked. Not unexpectedly, the most significant decline in services rated by most respondents is titled “AFFORDABLE HOUSING.”

It is encouraging to note that 67.8 percent of respondents judged the performance of an average of all services to be above average. Perhaps more important, the larger percentage of 69.2 percent of respondents said that the value of such services exceeded the above performance. In terms of performance, four services showed gains in perception from 2006. These were fire services, emergency services, garbage pickup, and parks.

Methodology remained essentially the same as begun in 2005 except for intentional over sampling in Temple Terrace and geographical dispersion was increased to include more small neighborhoods.

The survey was conducted between September 19, 2007 and October 22, 2007.

SUMMARY CHANGES 2006 TO 2007

Considering only answers, and changes in the above average ratings, the total of various aspects of life in Hillsborough shows a total negative change from 2006 to 2007 of about 12.2 percent. All of the nine elements rated by citizens of the County moved down by varying amounts.

	2006			2007			Change
	Below	Avg	Above	Below	Avg	Above	
COUNTY OVERALL	13.1	8.5	78.4	9.5	15.5	75.0	-4.3%
NEIGHBORHOOD	11.6	5.7	82.7	10.6	12.2	77.2	-6.7%
RAISE CHILDREN	12.3	11.6	76.1	13.9	14.3	71.7	-5.8%
CULTURAL OPPORT	12.9	13.5	73.6	15.2	14.6	70.2	-4.7%
ETHNIC DIVERSITY	14.2	11.3	74.6	15.2	16.6	68.2	-8.6%
JOB OPPORTUNITY	16.3	11.9	71.9	15.5	18.7	65.8	-8.5%
AFFORD.HOUSING	28.8	13.4	57.8	40.9	16.5	42.6	-26.3%
RETIREMENT	15.0	7.8	77.2	27.6	13.0	59.4	-23.1%
COUNTY INFO.	15.8	10.2	74.1	27.0	17.9	55.1	-25.6%
TOTAL	15.6	10.4	74.0	19.5	15.5	65.0	-12.2%

For convenience, the changes from 2005 to 2006 are shown in the chart below this paragraph. There was a reported increase in above average satisfaction of nearly 6.1 percent in the affordability of housing and even larger increases in the rating of the County as a place to retire and in the availability of information from County government. There was no decrease of more than 1.9 percent.

	2005			2006			Change
	Below	Avg	Above	Below	Avg	Above	
COUNTY OVERALL	9.3	12.9	77.8	13.1	8.5	78.4	0.8%
NEIGHBORHOOD	8.9	6.9	84.1	11.6	5.7	82.7	-1.7%
RAISE CHILDREN	13.1	13.8	73.2	12.3	11.6	76.1	4.0%
CULTURAL OPPORT	12.3	13.4	74.3	12.9	13.5	73.6	-0.9%
ETHNIC DIVERSITY	13.8	13.5	72.6	14.2	11.3	74.6	2.8%
JOB OPPORTUNITY	11.2	15.6	73.3	16.3	11.9	71.9	-1.9%
AFFORD.HOUSING	27.4	18.1	54.5	28.8	13.4	57.8	6.1%
RETIREMENT	16.9	13.6	69.4	15.0	7.8	77.2	11.2%
COUNTY INFO.	3.4	15.6	61.0	15.8	10.2	74.1	21.5%
TOTAL	15.1	13.7	71.1	15.6	10.4	74.0	4.1%

Of the 28 services, positive 2007 changes were reported in performance in 4 categories, or 14.3 percent. In terms of worth, 4 of the 28 services showed a gain compared to 2006.

Considering above average perceptions, the following table shows the changes that have occurred between 2006 and 2007 in terms of specific services provided by the County. Both performance and worth are considered. A summary covering all services combined is also included.

Services	Perform 2006	Perform 2007	%Change	Worth 2006	Worth 2007	%Change
All Services	77.6	67.8	-12.6%	77.0	69.2	-10.1%
1 SHERIFF	86.7	83.7	-3.5%	87.1	80.3	-7.8%
2 FIRE	86.8	92.8	6.9%	87.6	88.8	1.4%
3 EMERGENCY	85.1	92.1	8.2%	86.1	88.1	2.3%
4 VEHICLE SAFETY	69.8	62.4	-10.6%	69.2	65.5	-5.3%
5 EASE OF TRAVEL	70.2	56.0	-20.2%	67.8	59.4	-12.4%
6 BICYCLE LANES	63.6	43.1	-32.2%	68.8	51.7	-24.9%
7 PEDESTRIAN	66.4	51.8	-22.0%	67.3	61.0	-9.4%
8 YARD WASTE PICKUP	85.0	79.0	-7.1%	81.1	78.4	-3.3%
9 GARBAGE PICKUP	82.5	80.5	-2.4%	81.8	83.9	2.6%
10 TREE TRIMMING	79.2	65.1	-17.8%	75.8	69.1	-8.8%
11 DITCH	79.0	63.8	-19.2%	74.6	67.1	-10.1%
12 STREET REPAIR	74.1	53.4	-28.0%	76.3	58.1	-23.9%
13 STREET SIGN REPAIR	77.1	71.4	-7.4%	77.3	70.3	-9.1%
14 STORM-WATER DRAINAGE	74.3	61.4	-17.4%	72.9	62.6	-14.1%
15 MOSQUITO CONTROL	71.7	54.3	-24.3%	74.0	57.7	-22.0%
16 DRINKING WATER	74.8	68.3	-8.7%	75.0	66.1	-11.9%
17 SEWER	80.5	72.3	-10.2%	76.6	73.9	-3.6%
18 PARKS	82.0	83.5	1.8%	80.1	82.4	-2.9%
19 RECREATION	81.1	79.2	-2.3%	79.3	78.5	-1.1%
20 GROWTH MANAGEMENT	73.0	55.8	-23.6%	72.2	56.5	-21.7%
21 CODE ENFORCEMENT	79.3	64.6	-18.5%	78.3	67.6	-13.7%
22 ANIMAL CONTROL	81.6	73.1	-10.4%	80.9	70.5	-12.9%
23 HEALTH CARE FOR POOR	70.5	47.9	-32.1%	73.4	53.1	-27.7%
24 SENIOR SERVICES	76.0	63.4	-16.6%	76.6	65.7	-14.2%
25 CHILD CARE	75.4	62.3	-17.4%	71.8	65.7	-8.5%
26 AFFORDABLE HOUSING	71.6	45.5	-36.5%	72.3	48.1	-33.5%
27 LIBRARY	86.8	88.3	1.7%	84.6	86.4	2.1%
28 LIBRARY CHILDREN	86.7	83.8	-3.3%	85.5	81.3	-4.9%

The citizens' ratings of services remain well above the national average of 190 other political jurisdictions conducting comparable surveys.

Again, for convenience, similar changes from 2005 to 2006 are shown

Services	Perform 2005	Perform 2006	%Change	Worth 2005	Worth 2006	%Change
All Services	68.1	77.6	14.0%	67.9	77.0	13.4%
1 SHERIFF	84.1	86.7	3.1%	84.5	87.1	3.1%
2 FIRE	94.1	86.8	-7.8%	88.1	87.6	-0.6%
3 EMERGENCY	93.9	85.1	-9.4%	89.0	86.1	-3.3%
4 VEHICLE SAFETY	56.3	69.8	24.0%	58.1	69.2	19.1%
5 EASE OF TRAVEL	51.0	70.2	37.6%	51.7	67.8	31.1%
6 BICYCLE LANES	43.8	63.6	45.2%	50.8	68.8	35.4%
7 PEDESTRIAN	48.8	66.4	36.1%	54.0	67.3	24.6%
8 YARD WASTE PICKUP	76.6	85.0	11.0%	78.2	81.1	3.7%
9 GARBAGE PICKUP	80.3	82.5	2.7%	81.0	81.8	1.0%
10 TREE TRIMMING	69.9	79.2	13.3%	68.4	75.8	10.8%
11 DITCH	66.4	79.0	19.0%	69.0	74.6	8.1%
12 STREET REPAIR	51.8	74.1	43.1%	50.2	76.3	52.0%

Services	Perform 2005	Perform 2006	%Change	Worth 2005	Worth 2006	%Change
13 STREET SIGN REPAIR	71.2	77.1	8.3%	70.3	77.3	10.0%
14 STORM-WATER DRAINAGE	63.1	74.3	17.7%	57.3	72.9	27.2%
15 MOSQUITO CONTROL	56.2	71.7	27.6%	54.4	74.0	36.0%
16 DRINKING WATER	66.9	74.8	11.8%	64.7	75.0	15.9%
17 SEWER	76.9	80.5	4.7%	79.4	76.6	-3.5%
18 PARKS	87.7	82.0	-6.5%	85.4	80.1	-6.2%
19 RECREATION	79.2	81.1	2.4%	79.4	79.3	-0.1%
20 GROWTH MANAGEMENT	48.0	73.0	52.1%	49.7	72.2	45.3%
21 CODE ENFORCEMENT	59.7	79.3	32.8%	58.1	78.3	34.8%
22 ANIMAL CONTROL	75.5	81.6	8.1%	72.3	80.9	11.9%
23 HEALTH CARE FOR POOR	49.1	70.5	43.6%	49.9	73.4	47.1%
24 SENIOR SERVICES	67.2	76.0	13.1%	67.9	76.6	12.8%
25 CHILD CARE	61.5	75.4	22.6%	59.7	71.8	20.3%
26 AFFORDABLE HOUSING	44.7	71.6	60.2%	47.5	72.3	52.2%
27 LIBRARY	91.1	86.8	-4.7%	91.0	84.6	-7.0%
28 LIBRARY CHILDREN	84.8	86.7	2.2%	81.5	85.5	4.9%

2007 CITIZEN SATISFACTION HIGHLIGHTS

The following table summarizes the percentage results for various aspects of life in Hillsborough. The ANSWERS ONLY columns only include those who did provide judgments. The RATIO consists of *above average* answers divided by *below average* answers. Rankings of 1 to 10 were requested for these items, but only below average, average, and above average are shown here.

	2006 ANSWERS ONLY				2007 ANSWERS ONLY			
	BELOW AVERAGE	ABOVE	RATIO		BELOW AVERAGE	ABOVE	RATIO	
1. COUNTY OVERALL	13.1	8.5	78.4	6.0	9.5	15.5	75.0	7.9
2. NEIGHBORHOOD	11.6	5.7	82.7	7.1	10.6	12.2	77.2	7.3
3. RAISE CHILDREN	12.3	11.6	76.1	6.2	13.9	14.3	71.7	5.2
4. CULTURAL OPPORT.	12.9	13.5	73.6	5.7	15.2	14.6	70.2	4.6
5. ETHNIC DIVERSITY	14.2	11.3	74.6	5.3	15.2	16.6	68.2	4.5
6. JOB OPPORT.	16.3	11.9	71.9	4.4	15.5	18.7	65.8	4.2
7. AFFRD.HOUSING	28.8	13.4	57.8	2.0	40.9	16.5	42.6	1.0
8. RETIREMENT	15.0	7.8	77.2	5.2	27.6	13.0	59.4	2.2
9. COUNTY INFO.	15.8	10.2	74.1	4.7	27.0	17.9	55.1	2.0
AVERAGES OF ABOVE	15.6	10.4	74.0	4.7	19.5	15.5	65.0	3.3

The descriptions below are expansions of the numbered items above.

1. Hillsborough County overall
2. Your own neighborhood
3. Hillsborough as a place to raise children
4. Cultural opportunities in the County
5. A County where racial & ethnic diversity is appreciated
6. Hillsborough job opportunities
7. The affordability of housing
8. Hillsborough as a place to retire
9. The ease of knowing what's going on in County government

Among notable findings in the preceding table is that for one respondent viewing an item as below average, over three respondents rated the same item as above average. While showing a positive ratio, it may be worth noting that the value of attempts to provide affordable housing is considered below average by over 40 percent of residents.

The following table consists of citizen ratings regarding specific County services. The label PRFMC = performance. The label WORTH = value versus cost. Overall, considering an aggregate of 28 services, 83.7% of those who answered found performance of the services to be *above average* (6-10 on the scale of 1 to 10). Among the respondents who provided ratings, 7.8 percent found them *below average*. For eight services, perceived value outranked perceived performance.

The N near the lower left of each individual service refers to the number of households providing answers. The numbers following USED represent the households using the services during the past 12 months, according to respondents.

		ANSWERS ONLY			
		BLW	AVG	ABV	RATIO

COMBINATION OF ALL	PRFMC	19.1	13.1	67.8	3.6
COUNTY SERVICES	WORTH	18.1	12.7	69.2	3.8

	1				
SHERIFF SERVICES	PRFMC	7.8	8.5	83.7	10.7
	WORTH	9.2	10.4	80.3	8.7
N= 692	*** USED=	256	33.4% OF THOSE WHO ANSWERED		***

	2				
FIRE SERVICES	PRFMC	2.7	4.5	92.8	34.4
	WORTH	4.2	7.0	88.8	21.1
N= 689	*** USED=	123	16.1% OF THOSE WHO ANSWERED		***

	3				
EMERGENCY RESCUE	PRFMC	3.7	4.2	92.1	24.9
AMBULANCE SERVICES	WORTH	5.4	6.5	88.1	16.3
N= 708	*** USED=	243	31.7% OF THOSE WHO ANSWERED		***

	4				
SAFETY OF VEHICLE	PRFMC	19.6	18.0	62.4	3.2
TRAFFIC WITHIN THE	WORTH	19.9	14.6	65.5	3.3
COUNTY N= 718	*** USED=	475	63.1% OF THOSE WHO ANSWERED		***

	5				
EASE OF VEHICLE	PRFMC	27.9	16.1	56.0	2.0
TRAFFIC WITHIN THE	WORTH	25.9	14.7	59.4	2.3
COUNTY N= 719	*** USED=	544	71.7% OF THOSE WHO ANSWERED		***

	6				
CONVENIENCE - SAFETY	PRFMC	40.1	16.8	43.1	1.1
OF BICYCLE LANES AND	WORTH	33.6	14.7	51.7	1.5
TRAILS N= 634	*** USED=	219	29.8% OF THOSE WHO ANSWERED		***

	7				
CONVENIENCE - SAFETY	PRFMC	30.7	17.5	51.8	1.7
OF PEDESTRIAN FACILI-	WORTH	25.8	13.2	61.0	2.4
TIES N= 667	*** USED=	358	48.6% OF THOSE WHO ANSWERED		***

	8				
YARD WASTE PICK UP	PRFMC	12.4	8.7	79.0	6.4
	WORTH	12.7	8.9	78.4	6.2
N= 693	*** USED=	587	78.3% OF THOSE WHO ANSWERED		***

		ANSWERS ONLY				
		BLW	AVG	ABV	RATIO	
----- 9						
GARBAGE/RECYCLING	PRFMC	11.3	8.2	80.5	7.1	
COLLECTION	WORTH	8.8	7.4	83.9	9.5	
N= 706	*** USED=	616	81.8% OF THOSE WHO ANSWERED			***
----- 10						
TREE TRIMMING/REMOVAL	PRFMC	21.8	13.1	65.1	3.0	
	WORTH	18.4	12.6	69.1	3.8	
N= 669	*** USED=	281	39.1% OF THOSE WHO ANSWERED			***
----- 11						
DITCH/RIGHT-OF-WAY	PRFMC	20.4	15.8	63.8	3.1	
CLEANING AND MOWING	WORTH	19.5	13.4	67.1	3.4	
N= 665	*** USED=	252	35.1% OF THOSE WHO ANSWERED			***
----- 12						
STREET REPAIRS	PRFMC	30.0	16.6	53.4	1.8	
	WORTH	26.3	15.6	58.1	2.2	
N= 719	*** USED=	387	51.8% OF THOSE WHO ANSWERED			***
----- 13						
STREET SIGN REPAIR	PRFMC	14.2	14.4	71.4	5.0	
	WORTH	14.5	15.2	70.3	4.8	
N= 683	*** USED=	314	43.4% OF THOSE WHO ANSWERED			***
----- 14						
PUBLIC STORMWATER	PRFMC	23.8	14.8	61.4	2.6	
DRAINAGE	WORTH	20.9	16.5	62.6	3.0	
N= 671	*** USED=	341	48.3% OF THOSE WHO ANSWERED			***
----- 15						
MOSQUITO CONTROL	PRFMC	31.3	14.4	54.3	1.7	
	WORTH	28.7	13.6	57.7	2.0	
N= 676	*** USED=	294	41.6% OF THOSE WHO ANSWERED			***
----- 16						
PUBLIC DRINKING WATER	PRFMC	18.1	13.7	68.3	3.8	
SERVICES	WORTH	19.5	14.4	66.1	3.4	
N= 652	*** USED=	480	66.4% OF THOSE WHO ANSWERED			***
----- 17						
PUBLIC SEWER SERVICES	PRFMC	12.6	15.1	72.3	5.7	
	WORTH	12.9	13.2	73.9	5.7	
N= 620	*** USED=	437	61.3% OF THOSE WHO ANSWERED			***
----- 18						
COUNTY PARKS	PRFMC	8.5	8.0	83.5	9.8	
FACILITIES	WORTH	7.6	10.0	82.4	10.8	
N= 670	*** USED=	506	68.2% OF THOSE WHO ANSWERED			***
----- 19						
COUNTY RECREATION	PRFMC	9.5	11.3	79.2	8.3	
PROGRAMS	WORTH	10.7	10.9	78.5	7.3	
N= 608	*** USED=	319	44.7% OF THOSE WHO ANSWERED			***
----- 20						
MANAGEMENT OF GROWTH	PRFMC	29.6	14.6	55.8	1.9	
AND DEVELOPMENT	WORTH	31.9	11.6	56.5	1.8	
N= 665	*** USED=	252	37.5% OF THOSE WHO ANSWERED			***
----- 21						
CODE ENFORCEMENT	PRFMC	17.2	18.2	64.6	3.8	
	WORTH	16.5	15.9	67.6	4.1	
N= 654	*** USED=	229	33.2% OF THOSE WHO ANSWERED			***
----- 22						
ANIMAL CONTROL	PRFMC	14.4	12.5	73.1	5.1	
	WORTH	15.6	14.0	70.5	4.5	
N= 681	*** USED=	222	30.5% OF THOSE WHO ANSWERED			***

		ANSWERS ONLY			
		BLW	AVG	ABV	RATIO
----- 23					
HEALTH CARE FOR THE	PRFMC	35.4	16.6	47.9	1.4
POOR	WORTH	30.7	16.1	53.1	1.7
N= 589	*** USED=	165	24.7% OF THOSE WHO ANSWERED		***
----- 24					
SERVICES FOR SENIORS	PRFMC	20.6	16.0	63.4	3.1
	WORTH	20.6	13.7	65.7	3.2
N= 607	*** USED=	216	31.4% OF THOSE WHO ANSWERED		***
----- 25					
CHILD CARE SERVICES	PRFMC	21.1	16.5	62.3	3.0
	WORTH	18.4	15.8	65.7	3.6
N= 505	*** USED=	125	19.5% OF THOSE WHO ANSWERED		***
----- 26					
AFFORDABLE HOUSING FOR	PRFMC	37.2	17.3	45.5	1.2
LOW-INCOME PEOPLE	WORTH	36.0	15.9	48.1	1.3
N= 603	*** USED=	116	17.0% OF THOSE WHO ANSWERED		***
----- 27					
PUBLIC LIBRARY	PRFMC	4.9	6.9	88.3	18.0
SERVICES	WORTH	5.5	8.1	86.4	15.7
N= 713	*** USED=	535	71.5% OF THOSE WHO ANSWERED		***
----- 28					
LIBRARY PROGRAMS FOR	PRFMC	6.6	9.5	83.8	12.7
CHILDREN	WORTH	7.9	10.9	81.3	10.3
N= 571	*** USED=	280	41.4% OF THOSE WHO ANSWERED		***

Please notice that the number of residents who answered usually far exceeded the number who used a particular service.

Considering “answers only”, Hillsborough residents placed the above average worth of services well above the below average worth all 28 service categories. In 27 of the 28 service categories, performance was considered above average by the majority. Only in “DITCH CLEANING AND RIGHT OF WAY MOWING” were the average and below average ratings combined slightly higher than above average rating. The average number was 67.8 percent, above the last computed national average of less than 67 percent

REPORTED USERS

The following table is compiled only from those respondents who said at least some of the 28 services had been *used*. On the average, each of the services had been *used by* or benefited 45 percent of respondents, ranging from 16.1 percent to 81.8 percent. Some services had been *used by* almost all respondents. Performance among users is perceived to be above average by 71.1 percent of users, compared to 67.8 percent of all respondents, *users* or not.

SERVICE	PERFORMANCE RATINGS BY USERS			RATIO	USERS	PCT AVG
	BELOW	AVERAGE	ABOVER			
1. Sheriff	11.5	7.5	81.0	7.0	256	32.0
2 Fire	5.8	2.5	91.7	15.8	123	15.3
3 Emergency	3.8	1.7	94.5	24.9	243	30.4

SERVICE	<u>PERFORMANCE RATINGS BY USERS</u>			RATIO	USERS	PCT	AVG
	BELOW	AVERAGE	ABOVE				
4 Vehicle Safety	21.3	17.4	61.3	2.8	475	59.3	
5 Ease of Travel	29.3	15.9	54.8	1.9	544	68.0	
6 Bicycle Lanes	36.2	15.0	48.8	1.3	219	27.3	
7 Pedestrian	33.3	15.9	50.7	1.5	358	44.8	
8 Yard Waste Pick.	11.0	7.1	81.9	7.4	587	73.4	
9 Garbage Pickup	8.3	6.8	84.9	10.2	616	77.0	
10 Tree Trimming	17.2	9.4	73.4	4.3	281	35.1	
11 Ditch	16.0	12.6	71.4	4.5	252	31.5	
12 Street repair	27.0	14.8	58.2	2.2	387	48.4	
13 Street Sign Rep.	12.1	10.5	77.4	6.4	314	39.3	
14 Storm water drain	22.9	13.1	64.0	2.8	341	42.6	
15 Mosquito Control	24.7	11.8	63.5	2.6	294	36.8	
16 Drinking Water	14.2	11.6	74.1	5.2	480	60.0	
17 Sewers	10.1	13.3	76.6	7.6	437	54.6	
18 Parks	7.4	5.5	87.1	11.8	506	63.3	
19 Recreation	8.8	8.8	82.4	9.4	319	40.0	
20 Growth Mgmt	30.8	13.7	55.6	1.8	252	31.5	
21 Code Enforcement	18.2	15.0	66.8	3.7	229	28.6	
22 Animal Control	16.7	14.8	68.5	4.1	222	27.8	
23 Healthcare Poor	36.7	11.6	51.7	1.4	165	20.6	
24 Seniors Services	16.3	10.8	72.9	4.5	216	27.0	
25 Child Care	24.8	7.4	67.8	2.7	125	15.6	
26 Afford. Housing	36.4	14.0	49.5	1.4	116	14.5	
27 Library	4.0	4.7	91.3	22.8	535	66.9	
28 Children Library	4.2	7.2	88.7	21.1	280	35.0	
AVERAGE ALL 28	18.2	10.7	71.1			39.6	

COMPARISON OF MAJOR SURVEY CATEGORIES - 2007

ASPECTS OF LIFE (First Nine)

LOCATION	RATING		
	BLW	AVG	ABV
Municipalities Combined	19.6	15.1	65.3
Unincorporated	19.4	16.1	64.5
Tampa Only	19.5	15.2	65.2
Plant City	19.5	13.4	67.1
Temple Terrace	20.2	18.9	60.8
RACE			
White (Caucasian)	20.8	16.0	63.2
African American/Black	22.7	17.9	59.5
TIME LIVED HERE			
Less than 1 Year	7.8	11.3	81.0
1-10 Years	15.5	14.2	70.5
Over 10 Years, Not Always	19.8	15.9	64.3
All My Life	25.3	16.4	58.3
GENDER			
Male	17.6	16.5	65.9
Female	20.9	14.7	64.4
HISPANIC			
Yes	16.3	11.5	72.1
No	20.0	16.2	63.8

AGE GROUP	RATING		
	BLW	AVG	ABV
18-24	17.8	10.6	71.6
25-34	20.1	12.5	67.4
35-49	24.5	16.2	59.3
50-64	21.9	17.3	60.7
65+	13.2	15.1	71.7

GEOGRAPHIC AND RESPONDENT SELECTION

The 2007 sample frame was selected from all possible telephone numbers throughout the County. To assure inclusion of unlisted households, many numbers were selected in small neighborhoods likely to contain numerous unlisted numbers based on the telephone number assignments only. No demographics were considered. In neighborhoods with many telephones assigned according to Census data but with few listed numbers, the presence of unlisted numbers is almost certain. Selection from such areas is part of the methodology approved for federal survey use by the U.S. Office of Management and Budget. Many large survey firms use the methodology to assure efficient inclusion of unlisted numbers. Numerous trials have confirmed the methodological soundness of the approach. In other words, this method produces the same results as a random selection of all telephone households. That was the case in last year's survey for Hillsborough County.

While the 2005 results were not biased, the geographic distribution of the sample frame was not as dispersed as possible. The federal standard is not inadequate for sizeable areas such as ZIP Codes, counties, and standard metropolitan areas; however, the dual sample selection technique gives us better coverage of a larger number of small areas.

In 2007, two samples were drawn to assure greater inclusion of a large number of more widely dispersed small neighborhoods. The first (A) is a set of approximately 8,000 telephone households and was randomly selected from the two combined credit bureau databases for Hillsborough County. The second (B) is a set of 2,000 possible computer-generated telephone numbers that are not in the first set. The second set reaches widely dispersed neighborhoods with a known large percentage of unlisted telephone numbers.

To achieve pseudo-randomness, set (A) was sorted by first name and then by last name without regard for location within the County. To produce an unbiased and unpredictable selection within set (B), a computer randomly selected 9 digits with the rules that telephone number digits 1 and 4 must be at least 2 and that no selected digit had been selected previously. If the number selected were "825713649", then all likely unlisted numbers previously chosen would be sorted:

- first by telephone number digit 8,
- followed by telephone number digit 2,
- followed by telephone number digit 5,
- etc.

This produces an order for set (B) that has no easily discernable pattern and is always geographically diverse.

PRIMARY SURVEY DESCRIPTION

Cooperating households in Hillsborough County, Florida, from both sample frames described above were polled in between September 19 and October 22, 2007. The purpose was to help determine the degree of satisfaction with aspects of life in Hillsborough and 28 specific County government services. Respondents were also asked to state whether or not each service had been used during the past year. A total of 800 interviews provided the basis for this report. This produces an overall likely maximum sampling error rate of ± 3.46 percent.

RESPONDENT INTERVIEWS

All personnel making calls are full-time, experienced telephone interviewers. When preferred by the respondents, interviews were conducted in Spanish. Calls were primarily made weekday evenings; however, a significant number occurred on weekends, afternoons, or during the day.

COMPLETED SURVEY DATA PROCESSING

Processing of the responses has been provided using proprietary programs developed by Bamberg-Handley, Inc., using algorithms and techniques applied to hundreds of past surveys.

RESPONDENT DEMOGRAPHICS AND CENSUS 2000

One measure within the satisfaction survey concerns the length of residency in Hillsborough County. Please note the question about the length of residency in Hillsborough County has no real equivalent in the Census and the Census data is not shown in this section.

The table, which follows, shows answers to the survey question: "How long have you lived in Hillsborough County?" Percentages are of those who answered.

TIME IN COUNTY

Less than one year	15	1.9%	Over 10 years	377	40.2%
1 to 10 years	224	28.6%	Always	168	21.4%

The following Hillsborough County measurements can be compared to the Census.

<u>AGE</u>	ADULTS		
	CENSUS PERCENT	RESPONDENT COUNT	RESPONDENT PERCENT ADJUSTED
18-24	12.5	29	3.6
25-34	20.2	123	15.4
35-49	31.6	195	24.4
50-64	19.6	223	24.9
65+	16.1	230	28.8

As is usual in surveys, the number of very young adult respondents is less than the population percentage and the percentage of respondents compared to the population percentage is higher among those in the older age ranges.

	CENSUS PERCENT	RESPONDENT COUNT	RESPONDENT PERCENT ADJUSTED
<u>HISPANIC HERITAGE</u>			
HISPANIC	21.4	121	15.3
NON HISPANIC	82.0	668	84.7

	CENSUS PERCENT	RESPONDENT COUNT	RESPONDENT PERCENT ADJUSTED
<u>RACE/ETHNICITY (PRIMARY ONLY)</u>			
WHITE (CAUCASIAN)	79.1	406	45.0
AFRICAN AMERICAN/BLACK	17.2	135	25.0

It is clear that survey results are approximately consistent across all demographic dimensions of respondents. Differences with the Census findings apparently had no meaningful affect on survey results.

	CENSUS PERCENT	RESPONDENT COUNT	RESPONDENT PERCENT ADJUSTED
<u>GENDER</u>			
MALE	48.9	332	41.7
FEMALE	51.1	465	58.3

AFRICAN AMERICAN OR BLACK

The following table duplicates that shown for all of Hillsborough County, except that only African American or Black are included.

The following table consists of citizen ratings regarding specific County services. The label PRFMC = performance. The label WORTH = value versus cost.

		ANSWERS ONLY			
		BLW	AVG	ABV	RATIO
COMBINATION OF ALL COUNTY SERVICES	PRFMC	19.2	15.9	65.0	3.4
	WORTH	19.2	12.5	68.3	3.6

----- 1					
SHERIFF SERVICES	PRFMC	8.0	18.4	73.6	9.2
	WORTH	10.3	16.4	73.3	7.1

----- 2					
FIRE SERVICES	PRFMC	4.7	7.0	88.3	18.8
	WORTH	4.2	5.9	89.9	21.4

----- 3					
EMERGENCY RESCUE AMBULANCE SERVICES	PRFMC	4.6	9.2	86.3	18.8
	WORTH	6.3	7.1	86.5	13.7

----- 4					
SAFETY OF VEHICLE TRAFFIC WITHIN THE COUNTY	PRFMC	16.7	14.4	68.9	4.1
	WORTH	20.6	13.7	65.6	3.2

----- 5					
EASE OF VEHICLE TRAFFIC WITHIN THE COUNTY	PRFMC	21.1	19.5	59.4	2.8
	WORTH	22.8	15.4	61.8	2.7

		ANSWERS ONLY			
		BLW	AVG	ABV	RATIO
-----	6				
CONVENIENCE - SAFETY	PRFMC	42.6	17.2	40.2	0.9
OF BICYCLE LANES AND TRAILS	WORTH	30.5	20.3	49.2	1.6
-----	7				
CONVENIENCE - SAFETY	PRFMC	28.9	21.1	50.0	1.7
OF PEDESTRIAN FACILITIES	WORTH	25.2	13.4	61.3	2.4
-----	8				
YARD WASTE PICK UP	PRFMC	15.0	12.0	72.9	4.9
	WORTH	14.2	8.7	77.2	5.4
-----	9				
GARBAGE/RECYCLING COLLECTION	PRFMC	15.4	10.0	74.6	4.8
	WORTH	11.9	7.9	80.2	6.7
-----	10				
TREE TRIMMING/REMOVAL	PRFMC	24.6	12.3	63.1	2.6
	WORTH	19.8	7.9	72.2	3.6
-----	11				
DITCH/RIGHT-OF-WAY CLEANING AND MOWING	PRFMC	17.6	19.2	63.2	3.6
	WORTH	20.5	14.5	65.0	3.2
-----	12				
STREET REPAIRS	PRFMC	29.9	19.4	50.7	1.7
	WORTH	27.3	15.6	57.0	2.1
-----	13				
STREET SIGN REPAIR	PRFMC	13.5	17.3	69.2	5.1
	WORTH	15.3	12.9	71.8	4.7
-----	14				
PUBLIC STORMWATER DRAINAGE	PRFMC	21.1	21.1	57.8	2.7
	WORTH	23.2	19.2	57.6	2.5
-----	15				
MOSQUITO CONTROL	PRFMC	40.2	18.1	41.7	1.0
	WORTH	34.2	15.0	50.8	1.5
-----	16				
PUBLIC DRINKING WATER SERVICES	PRFMC	28.1	17.4	54.5	1.9
	WORTH	26.5	16.2	57.3	2.2
-----	17				
PUBLIC SEWER SERVICES	PRFMC	15.8	25.0	59.2	3.7
	WORTH	17.1	12.8	70.1	4.1
-----	18				
COUNTY PARKS FACILITIES	PRFMC	7.9	8.7	83.5	10.6
	WORTH	8.2	10.7	81.1	9.9
-----	19				
COUNTY RECREATION PROGRAMS	PRFMC	5.7	13.0	81.3	14.3
	WORTH	8.8	11.4	79.8	9.1
-----	20				
MANAGEMENT OF GROWTH AND DEVELOPMENT	PRFMC	16.7	16.7	66.7	4.0
	WORTH	19.2	13.6	67.2	3.5
-----	21				
CODE ENFORCEMENT	PRFMC	9.7	18.5	71.8	7.4
	WORTH	10.2	11.9	78.0	7.6
-----	22				
ANIMAL CONTROL	PRFMC	18.1	11.8	70.1	3.9
	WORTH	17.7	14.5	67.7	3.8
-----	23				
HEALTH CARE FOR THE POOR	PRFMC	40.0	21.6	38.4	1.0
	WORTH	33.1	13.6	53.4	1.6

		ANSWERS ONLY			
		BLW	AVG	ABV	RATIO
-----	24				
SERVICES FOR SENIORS	PRFMC	20.3	23.6	56.1	2.8
	WORTH	21.8	13.4	64.7	3.0
-----	25				
CHILD CARE SERVICES	PRFMC	19.6	17.9	62.5	3.2
	WORTH	20.4	10.2	69.4	3.4
-----	26				
AFFORDABLE HOUSING	PRFMC	39.8	18.7	41.5	1.0
FOR LOW-INCOME PEOPLE	WORTH	44.0	14.4	41.6	0.9
-----	27				
PUBLIC LIBRARY	PRFMC	4.6	8.5	86.9	18.9
SERVICES	WORTH	11.7	8.6	79.7	6.8
-----	28				
LIBRARY PROGRAMS FOR	PRFMC	6.1	7.0	86.8	14.2
CHILDREN	WORTH	11.5	5.3	83.2	7.2

SPECIAL QUESTION	WORTH	7.5	14.3	78.2	10.4

MUNICIPALITIES COMBINED (TAMPA, TEMPLE TERRACE, PLANT CITY)

The following table duplicates that shown for all of Hillsborough County, except that only those respondents within Tampa, Temple Terrace and Plant City are included.

The following table consists of citizen ratings regarding specific County services. The label PRFMC = performance. The label WORTH = value versus cost.

		ANSWERS ONLY			
		BLW	AVG	ABV	RATIO
COMBINATION OF ALL	PRFMC	18.9	13.3	67.8	3.6
COUNTY SERVICES	WORTH	18.1	12.6	69.3	3.8

-----	1				
SHERIFF SERVICES	PRFMC	7.3	9.7	83.0	11.4
	WORTH	10.0	10.7	79.3	7.9
-----	2				
FIRE SERVICES	PRFMC	3.1	4.1	92.8	29.9
	WORTH	4.5	7.0	88.5	19.7
-----	3				
EMERGENCY RESCUE	PRFMC	4.3	4.1	91.6	21.3
AMBULANCE SERVICES	WORTH	5.5	7.4	87.1	15.8
-----	4				
SAFETY OF VEHICLE	PRFMC	16.6	18.0	65.4	3.9
TRAFFIC WITHIN THE	WORTH	19.6	13.2	67.2	3.4
COUNTY					
-----	5				
EASE OF VEHICLE	PRFMC	25.3	15.8	58.9	2.3
TRAFFIC WITHIN THE	WORTH	25.7	13.5	60.8	2.4
COUNTY					
-----	6				
CONVENIENCE - SAFETY	PRFMC	38.8	16.0	45.2	1.2
OF BICYCLE LANES AND	WORTH	31.5	14.9	53.6	1.7
TRAILS					

		ANSWERS ONLY			
		BLW	AVG	ABV	RATIO
-----	7				
CONVENIENCE - SAFETY	PRFMC	30.0	17.1	52.9	1.8
OF PEDESTRIAN FACILI-	WORTH	25.3	12.9	61.8	2.4
TIES					
-----	8				
YARD WASTE PICK UP	PRFMC	13.4	9.9	76.7	5.7
	WORTH	14.0	9.5	76.6	5.5
-----	9				
GARBAGE/RECYCLING	PRFMC	11.4	8.3	80.3	7.0
COLLECTION	WORTH	9.9	8.1	82.0	8.3
-----	10				
TREE TRIMMING/REMOVAL	PRFMC	24.0	13.0	63.0	2.6
	WORTH	18.5	13.4	68.1	3.7
-----	11				
DITCH/RIGHT-OF-WAY	PRFMC	20.3	15.4	64.4	3.2
CLEANING AND MOWING	WORTH	19.4	14.3	66.4	3.4
-----	12				
STREET REPAIRS	PRFMC	31.7	17.1	51.2	1.6
	WORTH	26.5	15.7	57.8	2.2
-----	13				
STREET SIGN REPAIR	PRFMC	13.6	15.3	71.1	5.2
	WORTH	14.1	16.2	69.7	4.9
-----	14				
PUBLIC STORMWATER	PRFMC	24.9	14.3	60.8	2.4
DRAINAGE	WORTH	22.5	15.9	61.6	2.7
-----	15				
MOSQUITO CONTROL	PRFMC	33.5	13.1	53.5	1.6
	WORTH	28.3	13.2	58.5	2.1
-----	16				
PUBLIC DRINKING WATER	PRFMC	17.9	15.1	67.0	3.7
SERVICES	WORTH	18.5	15.2	66.3	3.6
-----	17				
PUBLIC SEWER SERVICES	PRFMC	13.9	14.4	71.7	5.2
	WORTH	13.8	13.1	73.1	5.3
-----	18				
COUNTY PARKS	PRFMC	9.0	7.9	83.3	9.2
FACILITIES	WORTH	7.5	8.8	83.7	11.2
-----	19				
COUNTY RECREATION	PRFMC	9.8	10.4	79.8	8.1
PROGRAMS	WORTH	10.1	10.3	79.3	7.9
-----	20				
MANAGEMENT OF GROWTH	PRFMC	26.7	14.6	59.7	2.3
AND DEVELOPMENT	WORTH	28.4	11.2	60.3	2.1
-----	21				
CODE ENFORCEMENT	PRFMC	15.9	17.0	67.0	4.2
	WORTH	15.2	14.3	70.6	4.6
-----	22				
ANIMAL CONTROL	PRFMC	14.2	11.9	74.0	5.2
	WORTH	14.6	13.3	72.1	4.9
-----	23				
HEALTH CARE FOR THE	PRFMC	36.8	17.5	45.7	1.2
POOR	WORTH	31.2	14.8	54.0	1.7

		ANSWERS ONLY			
		BLW	AVG	ABV	RATIO
----- 24					
SERVICES FOR SENIORS	PRFMC	21.0	17.5	61.5	2.9
	WORTH	22.1	13.0	64.9	2.9
----- 25					
CHILD CARE SERVICES	PRFMC	19.9	18.2	61.9	3.1
	WORTH	15.2	16.9	67.9	4.5
----- 26					
AFFORDABLE HOUSING	PRFMC	34.8	18.4	46.8	1.3
FOR LOW-INCOME PEOPLE	WORTH	34.3	14.8	50.9	1.5
----- 27					
PUBLIC LIBRARY	PRFMC	4.7	8.2	87.0	18.5
SERVICES	WORTH	5.9	8.5	85.7	14.5
----- 28					
LIBRARY PROGRAMS FOR	PRFMC	6.0	10.3	83.7	14.0
CHILDREN	WORTH	7.0	11.6	81.4	11.6

SPECIAL QUESTION	WORTH	9.9	14.3	75.8	7.7

UNINCORPORATED (OUTSIDE TAMPA, TEMPLE TERRACE, PLANT CITY)

The following table duplicates that shown for all of Hillsborough County, except that only those respondents living outside Tampa, Temple Terrace and Plant City but inside Hillsborough County are included.

The following table consists of citizen ratings regarding specific County services. The label PRFMC = performance. The label WORTH = value versus cost.

		ANSWERS ONLY			
		BLW	AVG	ABV	RATIO
COMBINATION OF ALL	PRFMC	19.5	12.8	67.7	3.5
COUNTY SERVICES	WORTH	18.8	12.9	68.4	3.6

----- 1					
SHERIFF SERVICES	PRFMC	8.8	6.3	84.9	9.6
	WORTH	7.9	9.9	82.1	10.4
----- 2					
FIRE SERVICES	PRFMC	1.9	5.3	92.8	48.8
	WORTH	3.6	6.9	89.5	24.9
----- 3					
EMERGENCY RESCUE	PRFMC	2.6	4.5	92.9	35.7
AMBULANCE SERVICES	WORTH	5.2	4.8	90.0	17.3
----- 4					
SAFETY OF VEHICLE	PRFMC	25.3	18.1	56.6	2.2
TRAFFIC WITHIN THE	WORTH	20.5	17.3	62.2	3.0
COUNTY					
----- 5					
EASE OF VEHICLE	PRFMC	32.7	16.7	50.6	1.5
TRAFFIC WITHIN THE	WORTH	26.2	17.1	56.7	2.2
COUNTY TRAILS					

		ANSWERS ONLY			
		BLW	AVG	ABV	RATIO
-----	6				
CONVENIENCE - SAFETY	PRFMC	42.6	18.3	39.1	0.9
OF BICYCLE LANES AND	WORTH	37.6	14.2	48.2	1.3
-----	7				
CONVENIENCE - SAFETY	PRFMC	32.2	18.2	49.6	1.5
OF PEDESTRIAN FACILI-	WORTH	26.6	13.7	59.7	2.2
TIES					
-----	8				
YARD WASTE PICK UP	PRFMC	10.5	6.4	83.1	7.9
	WORTH	10.4	8.0	81.5	7.8
-----	9				
GARBAGE/RECYCLING	PRFMC	11.2	8.2	80.7	7.2
COLLECTION	WORTH	6.8	6.0	87.2	12.8
-----	10				
TREE TRIMMING/REMOVAL	PRFMC	17.5	13.3	69.2	4.0
	WORTH	18.3	10.9	70.9	3.9
-----	11				
DITCH/RIGHT-OF-WAY	PRFMC	20.7	16.7	62.5	3.0
CLEANING AND MOWING	WORTH	19.8	11.8	68.4	3.5
-----	12				
STREET REPAIRS	PRFMC	26.9	15.5	57.6	2.1
	WORTH	26.0	15.4	58.7	2.3
-----	13				
STREET SIGN REPAIR	PRFMC	15.2	12.9	71.9	4.7
	WORTH	15.2	13.5	71.3	4.7
-----	14				
PUBLIC STORMWATER	PRFMC	21.7	15.7	62.6	2.9
DRAINAGE	WORTH	17.7	17.7	64.5	3.6
-----	15				
MOSQUITO CONTROL	PRFMC	27.2	16.9	55.9	2.1
	WORTH	29.4	14.5	56.2	1.9
-----	16				
PUBLIC DRINKING WATER	PRFMC	18.3	11.0	70.7	3.9
SERVICES	WORTH	21.3	12.9	65.8	3.1
-----	17				
PUBLIC SEWER SERVICES	PRFMC	9.9	16.7	73.4	7.4
	WORTH	11.0	13.5	75.5	6.9
-----	18				
COUNTY PARKS	PRFMC	7.6	8.0	84.4	11.1
FACILITIES	WORTH	7.9	12.2	79.9	10.1
-----	19				
COUNTY RECREATION	PRFMC	9.0	13.0	78.0	8.7
PROGRAMS	WORTH	11.9	11.9	76.2	6.4
-----	20				
MANAGEMENT OF GROWTH	PRFMC	37.2	14.6	48.1	1.3
AND DEVELOPMENT	WORTH	38.4	12.2	49.3	1.3
-----	21				
CODE ENFORCEMENT	PRFMC	19.6	20.4	60.0	3.1
	WORTH	19.0	19.0	61.9	3.3
-----	22				
ANIMAL CONTROL	PRFMC	14.8	13.7	71.5	4.8
	WORTH	17.3	15.2	67.5	3.9
-----	23				
HEALTH CARE FOR THE	PRFMC	32.9	14.8	52.3	1.6
POOR	WORTH	29.8	18.7	51.5	1.7

		ANSWERS ONLY			
		BLW	AVG	ABV	RATIO
-----	24				
SERVICES FOR SENIORS	PRFMC	19.8	13.4	66.8	3.4
	WORTH	17.8	14.9	67.3	3.8
-----	25				
CHILD CARE SERVICES	PRFMC	23.7	13.0	63.3	2.7
	WORTH	25.6	13.5	60.9	2.4
-----	26				
AFFORDABLE HOUSING	PRFMC	41.9	15.2	42.9	1.0
FOR LOW-INCOME PEOPLE	WORTH	39.4	18.2	42.4	1.1
-----	27				
PUBLIC LIBRARY	PRFMC	5.1	4.4	90.4	17.7
SERVICES	WORTH	4.8	7.5	87.7	18.3
-----	28				
LIBRARY PROGRAMS FOR	PRFMC	7.9	7.9	84.2	10.7
CHILDREN	WORTH	9.8	9.2	81.0	8.3

SPECIAL QUESTION	WORTH	8.6	12.9	78.4	9.1

TAMPA ONLY

The following table duplicates that shown for all of Hillsborough County, except that only those respondents within the corporate limits of Tampa only are included.

The following table consists of citizen ratings regarding specific County services. The label PRFMC = performance. The label WORTH = value versus cost.

		ANSWERS ONLY			
		BLW	AVG	ABV	RATIO
COMBINATION OF ALL	PRFMC	18.7	13.0	68.3	3.6
COUNTY SERVICES	WORTH	17.9	12.4	69.7	8.4

-----	1				
SHERIFF SERVICES	PRFMC	7.2	9.4	83.4	11.6
	WORTH	9.5	10.3	80.2	8.4
-----	2				
FIRE SERVICES	PRFMC	3.3	4.0	92.7	28.1
	WORTH	3.9	6.4	89.7	23.0
-----	3				
EMERGENCY RESCUE	PRFMC	4.2	3.7	92.0	21.9
AMBULANCE SERVICES	WORTH	5.4	7.0	87.6	16.2
-----	4				
SAFETY OF VEHICLE	PRFMC	17.4	16.9	65.7	3.8
TRAFFIC WITHIN THE	WORTH	20.7	12.3	66.9	3.2
COUNTY					
-----	5				
EASE OF VEHICLE	PRFMC	26.5	15.2	58.3	2.2
TRAFFIC WITHIN THE	WORTH	26.5	13.0	60.6	2.3
COUNTY					
-----	6				
CONVENIENCE - SAFETY	PRFMC	38.8	14.8	46.4	1.2
OF BICYCLE LANES AND	WORTH	30.2	15.1	54.7	1.8
TRAILS					

		ANSWERS ONLY			
		BLW	AVG	ABV	RATIO
-----	7				
CONVENIENCE - SAFETY	PRFMC	31.0	16.3	52.7	1.7
OF PEDESTRIAN FACILI-	WORTH	24.7	12.8	62.5	2.5
TIES					
-----	8				
YARD WASTE PICK UP	PRFMC	12.3	9.1	78.5	6.4
	WORTH	13.6	9.1	77.3	5.7
-----	9				
GARBAGE/RECYCLING	PRFMC	11.5	7.6	80.9	7.0
COLLECTION	WORTH	9.4	8.0	82.6	8.8
-----	10				
TREE TRIMMING/REMOVAL	PRFMC	23.2	13.2	63.6	2.7
	WORTH	19.0	14.0	67.0	3.5
-----	11				
DITCH/RIGHT-OF-WAY	PRFMC	19.5	15.3	65.3	3.3
CLEANING AND MOWING	WORTH	18.7	16.1	65.2	3.5
-----	12				
STREET REPAIRS	PRFMC	33.1	16.3	50.6	1.5
	WORTH	28.3	16.1	55.6	2.0
-----	13				
STREET SIGN REPAIR	PRFMC	14.2	15.5	70.3	5.0
	WORTH	12.7	17.0	70.3	5.5
-----	14				
PUBLIC STORMWATER	PRFMC	25.6	13.0	61.4	2.4
DRAINAGE	WORTH	23.5	12.2	61.2	2.6
-----	15				
MOSQUITO CONTROL	PRFMC	33.4	12.6	54.0	1.6
	WORTH	30.0	11.8	58.3	1.9
-----	16				
PUBLIC DRINKING WATER	PRFMC	16.8	15.5	67.7	4.0
SERVICES	WORTH	18.1	15.3	66.7	3.7
-----	17				
PUBLIC SEWER SERVICES	PRFMC	14.2	14.5	71.2	5.0
	WORTH	14.5	12.8	72.6	5.0
-----	18				
COUNTY PARKS	PRFMC	8.7	7.7	83.6	9.6
FACILITIES	WORTH	7.8	8.9	83.2	10.7
-----	19				
COUNTY RECREATION	PRFMC	8.6	11.1	80.3	9.3
PROGRAMS	WORTH	10.4	10.4	79.3	7.6
-----	20				
MANAGEMENT OF GROWTH	PRFMC	24.6	14.5	60.9	2.5
AND DEVELOPMENT	WORTH	28.7	10.9	60.4	2.1
-----	21				
CODE ENFORCEMENT	PRFMC	15.7	17.0	67.3	4.3
	WORTH	16.0	13.7	70.4	4.4
-----	22				
ANIMAL CONTROL	PRFMC	14.0	11.7	74.4	5.3
	WORTH	14.8	13.4	71.9	4.9
-----	23				
HEALTH CARE FOR THE	PRFMC	36.4	18.6	45.0	1.2
POOR	WORTH	31.3	14.7	54.1	1.7
-----	24				
SERVICES FOR SENIORS	PRFMC	21.1	17.1	61.7	2.9
	WORTH	22.3	13.1	64.5	2.9

		ANSWERS ONLY			
		BLW	AVG	ABV	RATIO
-----	25				
CHILD CARE SERVICES	PRFMC	17.7	18.3	64.0	3.6
	WORTH	15.7	15.7	68.5	4.4
-----	26				
AFFORDABLE HOUSING	PRFMC	33.6	17.5	48.9	1.5
FOR LOW-INCOME PEOPLE	WORTH	33.3	14.2	52.4	1.6
-----	27				
PUBLIC LIBRARY	PRFMC	5.0	7.8	87.2	17.4
SERVICES	WORTH	5.6	9.1	85.3	15.2
-----	28				
LIBRARY PROGRAMS FOR	PRFMC	6.8	9.1	84.1	12.4
CHILDREN	WORTH	7.0	11.5	81.5	11.6

SPECIAL QUESTION	WORTH	9.0	15.5	75.5	8.4

PLANT CITY

The following table duplicates that shown for all of Hillsborough County, except that only those respondents within the corporate limits of Plant City are included.

The following table consists of citizen ratings regarding specific County services. The label PRFMC = performance. The label WORTH = value versus cost.

		ANSWERS ONLY			
		BLW	AVG	ABV	RATIO
COMBINATION OF ALL	PRFMC	18.2	14.9	67.0	3.7
COUNTY SERVICES	WORTH	16.9	13.6	69.6	4.1

-----	1				
SHERIFF SERVICES	PRFMC	7.2	13.0	79.7	11.1
	WORTH	9.7	12.9	77.4	8.0
-----	2				
FIRE SERVICES	PRFMC	1.4	4.3	94.2	67.3
	WORTH	7.8	9.4	82.8	10.6
-----	3				
EMERGENCY RESCUE	PRFMC	4.3	5.8	89.9	20.9
AMBULANCE SERVICES	WORTH	4.6	10.8	84.6	18.4
-----	4				
SAFETY OF VEHICLE	PRFMC	11.6	24.6	63.8	5.5
TRAFFIC WITHIN THE	WORTH	14.9	17.9	67.2	4.5
COUNTY					
-----	5				
EASE OF VEHICLE	PRFMC	18.6	18.6	62.9	3.4
TRAFFIC WITHIN THE	WORTH	25.8	13.6	60.6	2.3
COUNTY					
-----	6				
CONVENIENCE - SAFETY	PRFMC	40.6	21.9	37.5	0.9
OF BICYCLE LANES AND	WORTH	40.0	16.4	43.6	1.1
TRAILS					
-----	7				
CONVENIENCE - SAFETY	PRFMC	16.2	25.0	58.8	3.6
OF PEDESTRIAN FACILI-	WORTH	25.0	15.0	60.0	2.4
TIES					

		ANSWERS ONLY			
		BLW	AVG	ABV	RATIO
-----	8				
YARD WASTE PICK UP	PRFMC	19.1	13.2	67.6	3.5
	WORTH	15.9	7.9	76.2	4.8
-----	9				
GARBAGE/RECYCLING	PRFMC	13.2	11.6	75.0	5.7
COLLECTION	WORTH	12.5	7.8	79.7	6.4
-----	10				
TREE TRIMMING/REMOVAL	PRFMC	29.0	11.6	59.4	2.0
	WORTH	16.7	11.7	71.7	4.3
-----	11				
DITCH/RIGHT-OF-WAY	PRFMC	23.9	11.9	64.2	2.7
CLEANING AND MOWING	WORTH	21.0	6.5	72.6	3.5
-----	12				
STREET REPAIRS	PRFMC	26.5	16.2	57.4	2.2
	WORTH	16.9	15.4	67.7	4.0
-----	13				
STREET SIGN REPAIR	PRFMC	11.6	13.0	75.4	6.5
	WORTH	20.0	12.3	67.7	3.4
-----	14				
PUBLIC STORMWATER	PRFMC	19.0	17.5	63.4	3.3
DRAINAGE	WORTH	17.2	20.7	62.1	3.6
-----	15				
MOSQUITO CONTROL	PRFMC	32.3	18.5	49.2	1.5
	WORTH	21.0	17.7	61.3	2.9
-----	16				
PUBLIC DRINKING WATER	PRFMC	25.4	8.5	66.1	2.6
SERVICES	WORTH	18.2	16.4	65.5	3.6
-----	17				
PUBLIC SEWER SERVICES	PRFMC	7.4	11.1	81.5	11.0
	WORTH	8.0	16.0	76.0	9.5
-----	18				
COUNTY PARKS	PRFMC	7.5	7.5	85.1	11.3
FACILITIES	WORTH	4.8	9.5	85.7	17.9
-----	19				
COUNTY RECREATION	PRFMC	9.8	6.6	83.6	8.5
PROGRAMS	WORTH	8.5	10.2	81.4	9.6
-----	20				
MANAGEMENT OF GROWTH	PRFMC	28.8	13.6	57.6	2.0
AND DEVELOPMENT	WORTH	28.1	8.8	63.2	2.2
-----	21				
CODE ENFORCEMENT	PRFMC	11.7	18.3	70.0	6.0
	WORTH	8.5	16.9	74.6	8.8
-----	22				
ANIMAL CONTROL	PRFMC	13.8	13.8	72.3	5.2
	WORTH	12.3	13.8	73.8	6.0
-----	23				
HEALTH CARE FOR THE	PRFMC	36.2	15.5	48.3	1.3
POOR	WORTH	28.3	18.9	52.8	1.9
-----	24				
SERVICES FOR SENIORS	PRFMC	18.6	20.3	61.0	3.3
	WORTH	21.4	14.3	64.3	3.0
-----	25				
CHILD CARE SERVICES	PRFMC	29.1	20.0	50.9	1.7
	WORTH	12.2	24.5	63.3	5.2
-----	26				
AFFORDABLE HOUSING	PRFMC	39.7	25.9	34.5	0.9
FOR LOW-INCOME PEOPLE	WORTH	36.4	18.2	45.5	1.3

		ANSWERS ONLY			
		BLW	AVG	ABV	RATIO
-----	27				
PUBLIC LIBRARY	PRFMC	3.0	7.8	87.2	28.8
SERVICES	WORTH	9.2	6.2	84.6	9.2
-----	28				
LIBRARY PROGRAMS FOR	PRFMC	3.4	17.2	79.3	23.3
CHILDREN	WORTH	7.1	10.7	82.1	11.6

SPECIAL QUESTION	WORTH	14.3	8.6	77.1	5.4

TEMPLE TERRACE

The following table duplicates that shown for all of Hillsborough County, except that only those respondents living within the corporate limits of Temple Terrace are included.

The following table consists of citizen ratings regarding specific County services. The label PRFMC = performance. The label WORTH = value versus cost.

		ANSWERS ONLY			
		BLW	AVG	ABV	RATIO
COMBINATION OF ALL	PRFMC	22.8	14.3	62.8	2.8
COUNTY SERVICES	WORTH	19.1	12.0	68.9	3.6

-----	1				
SHERIFF SERVICES	PRFMC	9.5	4.8	85.7	9.0
	WORTH	21.1	10.5	68.4	3.2
-----	2				
FIRE SERVICES	PRFMC	4.5	4.5	90.9	20.2
	WORTH	3.6	6.9	89.5	14.9
-----	3				
EMERGENCY RESCUE	PRFMC	4.8	4.8	90.5	18.9
AMBULANCE SERVICES	WORTH	5.6	11.1	83.3	8.5
-----	4				
SAFETY OF VEHICLE	PRFMC	17.4	17.4	65.2	3.7
TRAFFIC WITHIN THE	WORTH	10.0	5.0	85.0	5.0
COUNTY					
-----	5				
EASE OF VEHICLE	PRFMC	26.1	17.4	56.5	2.2
TRAFFIC WITHIN THE	WORTH	14.3	14.3	71.4	5.0
COUNTY					
-----	6				
CONVENIENCE - SAFETY	PRFMC	33.3	19.0	47.6	1.4
OF BICYCLE LANES AND	WORTH	13.0	21.7	65.2	2.2
TRAILS					
-----	7				
CONVENIENCE - SAFETY	PRFMC	52.2	8.7	39.1	0.7
OF PEDESTRIAN FACILI-	WORTH	29.4	5.9	64.7	1.5
TIES					
-----	8				
YARD WASTE PICK UP	PRFMC	14.3	14.3	71.4	5.0
	WORTH	36.4	9.1	54.5	4.3

		ANSWERS ONLY			
		BLW	AVG	ABV	RATIO
-----	9				
GARBAGE/RECYCLING	PRFMC	4.5	9.1	86.4	19.2
COLLECTION	WORTH	15.0	20.0	65.0	7.0
-----	10				
TREE TRIMMING/REMOVAL	PRFMC	22.7	13.6	63.6	2.8
	WORTH	11.1	11.1	77.8	5.3
-----	11				
DITCH/RIGHT-OF-WAY	PRFMC	22.7	27.3	50.0	2.2
CLEANING AND MOWING	WORTH	14.3	9.5	76.2	2.4
-----	12				
STREET REPAIRS	PRFMC	21.7	34.8	43.5	2.0
	WORTH	27.8	5.6	66.7	3.0
-----	13				
STREET SIGN REPAIR	PRFMC	9.1	18.2	72.7	8.0
	WORTH	22.7	9.1	68.2	3.5
-----	14				
PUBLIC STORMWATER	PRFMC	30.4	26.1	43.5	1.4
DRAINAGE	WORTH	19.0	14.3	66.7	3.5
-----	15				
MOSQUITO CONTROL	PRFMC	38.1	4.8	57.1	1.5
	WORTH	19.0	14.3	66.7	2.4
-----	16				
PUBLIC DRINKING WATER	PRFMC	17.6	29.4	52.9	3.0
SERVICES	WORTH	22.7	22.7	54.5	2.2
-----	17				
PUBLIC SEWER SERVICES	PRFMC	26.3	21.1	52.6	2.0
	WORTH	27.8	11.1	61.1	4.7
-----	18				
COUNTY PARKS	PRFMC	18.2	13.6	68.2	3.7
FACILITIES	WORTH	15.8	10.5	73.7	8.5
-----	19				
COUNTY RECREATION	PRFMC	30.0	10.0	60.0	2.0
PROGRAMS	WORTH	10.0	5.0	85.0	7.5
-----	20				
MANAGEMENT OF GROWTH	PRFMC	36.4	18.2	45.5	1.3
AND DEVELOPMENT	WORTH	10.5	10.5	78.9	2.0
-----	21				
CODE ENFORCEMENT	PRFMC	31.8	13.6	54.5	1.7
	WORTH	25.0	25.0	50.0	2.8
-----	22				
ANIMAL CONTROL	PRFMC	19.0	9.5	71.4	3.8
	WORTH	22.2	16.7	61.1	3.5
-----	23				
HEALTH CARE FOR THE	PRFMC	45.0	5.0	50.0	1.1
POOR	WORTH	20.0	10.0	70.0	1.4
-----	24				
SERVICES FOR SENIORS	PRFMC	25.0	15.0	60.0	2.4
	WORTH	38.9	5.6	55.6	4.0
-----	25				
CHILD CARE SERVICES	PRFMC	31.6	10.5	57.9	1.8
	WORTH	18.8	6.3	75.0	5.0
-----	26				
AFFORDABLE HOUSING	PRFMC	42.1	10.5	47.4	1.1
FOR LOW-INCOME PEOPLE	WORTH	14.3	14.3	71.4	0.9
-----	27				
PUBLIC LIBRARY	PRFMC	4.5	9.1	86.4	19.2
SERVICES	WORTH	45.0	15.0	40.0	N/A

		ANSWERS ONLY			
		BLW	AVG	ABV	RATIO
----- 28					
LIBRARY PROGRAMS FOR CHILDREN	PRFMC WORTH	0.0	11.1	88.9	N/A
		0.0	4.5	95.5	13.0

SPECIAL QUESTION	WORTH	13.6	9.1	77.3	5.7

DETAILED EXPANDED RATINGS – OVERALL AND SELECTED CATEGORIES

In this section, the percentage of respondents providing ratings by each number one to ten is provided in several categories. Earlier in this report, values were provided in three categories... below average, average, and above average.

By far, the dominant items asked of respondents concerned ratings of various aspects of life in Hillsborough County, and performance and worth (performance versus cost) of specific services provided by the County. This is the primary statement in the survey:

"On a scale of one to ten with one being the worst and ten being the very best, please rate the following:"

Respondents were asked to rate their satisfaction with conditions of life in Hillsborough County, Florida. The first deals with broad categories and the next with 28 specific County governmental services. A scale of 1 to 10 is used with 1 being the least satisfactory and 10 being the most satisfactory. When asked to rank something on "a scale of 1 to 10", almost all individuals perceive 5 as the midpoint or average. Rankings 1-4 are usually thought of as "below average" and ratings of 6-10 are considered "above average".

To compare to other surveys, one should consider:

- 1-2 "well below average,"
- 3-4 "below average,"
- 5 "average,"
- 6-7 "above average,"
- 8-9 "well above average," and
- 10 "excellent" or "perfect"

Throughout the primary report, divisions have already been made into below average (1-4), average (5), and above average (6-10). This supplement provides data at the single digit level. NOTE: Affordable Housing (AFFRD HOUSING) in this section has not been defined to respondents as any particular type.

There are three subsections within the selected categories of this section.

The first provides the percentage of responses to nine broad measures of living in Hillsborough County. The second subsection shows results in terms of 28 specific County services. The third concerns perceptions of the worth or value of each such service comparing performance to cost. In other words, when the "worth" answers for a particular service are higher than those for performance, the aggregate of respondents believe the value provided is higher than the its cost.

For ease of comparison, the 28 services are in the same order and labeled the same for ease of comparison.

IN GENERAL, ALL RESPONDENTS IN ALL AREAS

OVERALL ASPECT OF LIFE CATEGORIES

1=WORST 10=BEST

ASPECT OF LIFE	1	2	3	4	5	6	7	8	9	10
COUNTY OVERALL	2.2	2.3	2.1	2.9	15.5	10.8	20.2	26.7	7.6	9.8
NEIGHBORHOOD	2.5	2.0	2.5	3.4	12.2	8.8	14.3	22.4	14.4	17.3
RAISE CHILDREN	4.1	3.0	3.5	3.4	14.3	11.7	15.6	19.3	10.8	14.3
CULTURAL OPPORTNTY	3.0	2.0	4.7	5.4	14.6	9.3	19.1	18.9	11.1	11.8
ETHNIC DIVERSITY	3.5	2.2	3.7	5.8	16.6	9.8	15.9	20.1	9.2	13.3
JOB OPPORTNTY	3.4	3.0	3.4	5.6	18.7	13.7	16.5	16.9	7.9	10.8
AFFORD HOUSING	10.0	8.0	11.4	11.6	16.5	10.9	10.8	10.0	4.2	6.8
RETIREMENT	9.0	6.3	6.1	6.3	13.0	7.6	10.5	14.6	8.7	18.0
COUNTY INFORMATION	6.4	5.4	6.9	8.3	17.9	12.2	13.4	14.3	6.2	9.0

OVERALL SPECIFIC SEVICE PERFORMANCE

1=WORST 10=BEST

PERFORMANCE	1	2	3	4	5	6	7	8	9	10
SHERIFF SERVICES	2.4	1.6	2.1	1.8	8.5	7.1	14.6	24.8	14.5	22.6
FIRE SERVICES	0.8	0.9	0.5	0.4	4.5	4.4	12.6	24.9	18.5	32.4
EMERGENCY, RESCUE	0.8	0.8	1.1	1.1	4.2	4.5	11.1	22.8	19.8	33.9
TRAFFIC SAFETY	4.7	4.1	5.0	5.9	18.0	15.0	13.5	17.9	5.0	11.0
TRAFFIC EASE	4.8	6.7	6.8	9.6	16.1	12.8	14.7	15.4	3.9	9.2
BIKE SAFETY, TRLS	13.4	6.3	10.2	10.2	16.8	8.9	12.0	10.8	3.5	8.0
PEDESTRIAN SAFETY	8.4	4.3	9.4	8.6	17.5	9.8	13.2	15.0	4.4	9.3
YARD WASTE PICK-UP	3.8	1.8	2.9	3.8	8.7	7.0	13.5	20.0	15.0	23.5
GARBAGE PICK-UP	3.6	2.0	2.9	2.8	8.2	6.4	12.8	20.3	15.4	25.5
TREE TRIMMING	6.8	3.8	5.4	5.9	13.1	10.1	13.7	18.0	8.7	14.5
DITCH CLEANG/MOWING	5.4	5.3	3.5	6.3	15.8	10.4	15.0	16.0	8.6	13.8
STREET REPAIR	7.8	6.3	7.1	8.8	16.6	12.2	13.5	12.8	5.7	9.3
STREET SIGN REPAIR	3.3	4.1	2.9	3.7	14.4	11.4	14.3	20.7	10.6	14.4
STORMWATER DRAINAGE	6.3	3.8	6.0	7.7	14.8	10.1	14.5	17.5	7.1	12.2
MOSQUITO CONTROL	11.2	4.8	7.1	8.1	14.4	8.1	11.5	16.2	7.4	11.1
DRNKNG WATER SRVCS	6.1	4.3	4.3	3.4	13.7	11.7	16.1	16.8	9.2	14.5
SEWER SERVICES	3.7	2.5	2.4	4.0	15.1	8.3	19.0	22.4	8.5	14.1
PARKS	1.5	2.1	1.9	3.0	8.0	8.4	16.2	25.4	13.0	20.6
RECREATION PROGRAMS	2.1	2.0	2.7	2.7	11.3	9.8	14.3	23.6	13.6	17.9
GROWTH MANAGEMENT	9.8	7.2	6.2	6.5	14.6	9.1	14.0	16.0	6.5	10.2
CODE ENFORCEMENT	4.8	2.6	4.4	5.4	18.2	10.6	15.1	15.0	10.0	13.8
ANIMAL CONTROL	5.0	2.6	3.0	3.8	12.5	9.8	16.7	19.0	10.3	17.3
HEALTH FOR POOR	11.9	7.3	8.2	8.1	16.6	10.4	11.6	9.7	6.8	9.5
SENIOR SERVICES	5.9	4.1	5.0	5.6	16.0	10.0	14.2	16.5	7.6	15.1
CHILD CARE SRVCS	4.2	4.9	6.2	5.8	16.5	10.4	16.4	16.5	6.3	12.7
AFFORD. HOUSING	9.1	8.3	10.4	9.3	17.3	9.4	12.6	10.9	3.6	9.0
PUBLIC LIBRARY	1.1	0.4	1.3	2.1	6.9	6.2	12.8	22.7	16.5	30.1
LIBRARY FOR CHLDRN	1.6	1.0	1.3	2.7	9.5	6.8	13.9	21.8	14.4	27.0

OVERALL SPECIFIC SERVICE WORTH

1=WORST 10=BEST

WORTH	1	2	3	4	5	6	7	8	9	10
SHERIFF SERVICES	2.9	1.0	2.0	3.3	10.4	6.5	14.9	20.7	11.8	26.4
FIRE SERVICES	1.2	0.9	1.0	1.2	7.0	5.5	12.2	22.1	14.8	34.3
EMERGENCY, RESCUE	0.8	1.0	2.0	1.6	6.5	4.4	15.0	17.7	16.7	34.5
TRAFFIC SAFETY	3.2	4.7	4.6	7.4	14.6	13.1	16.0	16.9	6.3	13.2
TRAFFIC EASE	3.8	5.4	5.8	10.8	14.7	11.8	15.4	15.7	4.2	12.2
BIKE SAFETY, TRLS	9.9	6.9	7.9	8.8	14.7	11.2	11.2	13.6	5.7	10.1
PEDESTRIAN SAFETY	6.0	5.4	5.4	9.0	13.2	12.4	16.2	14.1	6.7	11.5
YARD WASTE PICK-UP	4.0	1.9	3.3	3.5	8.9	7.6	14.4	22.9	12.4	20.9
GARBAGE PICK-UP	2.7	1.0	2.4	2.7	7.4	7.5	12.9	23.9	15.0	24.5
TREE TRIMMING	4.3	4.0	4.2	5.8	12.6	9.4	16.3	19.7	9.3	14.3
DITCH CLEANG/MOWING	5.6	4.4	4.7	5.0	13.4	10.8	18.2	16.8	8.1	13.1
STREET REPAIR	6.8	4.6	7.4	7.5	15.6	11.7	14.9	15.2	6.3	10.2
STREET SIGN REPAIR	3.4	3.1	4.0	4.1	15.2	11.7	16.4	19.6	8.8	13.8
STORMWATER DRAINAGE	5.8	3.1	5.8	6.1	16.5	10.7	14.8	15.9	7.2	14.0
MOSQUITO CONTROL	9.2	4.6	8.3	6.7	13.6	10.4	11.8	17.6	5.5	12.4
DRNKNG WATER SRVCS	6.3	3.1	4.4	5.7	14.4	8.3	12.3	21.8	6.9	16.9
SEWER SERVICES	2.9	2.3	3.4	4.4	13.2	11.0	15.2	22.6	8.2	16.9
PARKS	0.9	0.9	2.2	3.6	10.0	8.2	16.6	22.5	11.9	23.1
RECREATION PROGRAMS	2.1	2.0	3.1	3.5	10.9	8.4	16.9	21.5	11.7	19.9
GROWTH MANAGEMENT	9.2	6.6	7.4	8.7	11.6	9.9	15.0	12.6	7.2	11.7
CODE ENFORCEMENT	3.5	3.1	3.8	6.1	15.9	11.0	16.5	18.7	7.0	14.4
ANIMAL CONTROL	5.0	3.1	3.1	4.4	14.0	7.8	17.2	19.8	7.9	17.8
HEALTH FOR POOR	7.5	6.8	7.8	8.7	16.1	10.4	11.4	12.9	6.3	12.2
SENIOR SERVICES	4.9	2.8	6.3	6.6	13.7	10.0	14.8	16.5	7.2	17.1
CHILD CARE SRVCS	4.6	2.2	5.5	6.1	15.8	11.9	16.6	12.9	8.5	15.8
AFFORD. HOUSING	9.3	5.6	10.9	10.1	15.9	10.1	13.4	9.6	5.1	9.8
PUBLIC LIBRARY	1.0	0.4	1.7	2.4	8.1	6.2	14.0	23.3	15.0	27.9
LIBRARY FOR CHLDRN	1.6	1.2	1.4	3.7	10.9	7.2	13.0	19.4	13.1	28.5

UNINCORPORATED

UNINCORPORATED - ASPECT OF LIFE CATEGORIES

1=WORST 10=BEST

ASPECT OF LIFE	1	2	3	4	5	6	7	8	9	10
COUNTY OVERALL	2.2	2.9	1.5	2.9	17.3	12.5	17.6	26.1	7.0	9.9
NEIGHBORHOOD	3.2	1.8	0.4	2.2	10.4	6.1	12.6	25.9	14.7	22.7
RAISE CHILDREN	4.7	3.8	3.8	3.4	13.1	11.0	15.7	18.2	8.9	17.4
CULTURAL OPPORTNTY	3.5	1.2	4.7	5.4	16.7	7.0	18.3	18.7	10.1	14.4
ETHNIC DIVERSITY	3.5	1.6	3.1	5.9	15.7	9.1	18.5	18.1	7.9	16.5
JOB OPPORTNTY	1.8	4.1	3.7	6.9	18.9	13.4	15.7	16.1	6.9	12.4
AFFORD HOUSING	9.1	9.8	11.3	10.2	21.5	7.5	7.9	10.2	3.0	9.4
RETIREMENT	9.5	6.2	6.2	6.2	12.1	5.1	5.9	13.2	11.0	24.5
COUNTY INFORMATION	7.8	5.7	6.6	7.4	19.3	9.4	12.3	13.5	7.8	10.2

UNINCORPORATED - SPECIFIC SERVICES PERFORMANCE

1=WORST 10=BEST

PERFORMANCE	1	2	3	4	5	6	7	8	9	10
SHERIFF SERVICES	2.2	2.6	1.8	2.2	6.3	5.5	14.7	26.8	12.9	25.0
FIRE SERVICES	0.4	1.1	0.0	0.4	5.3	4.2	12.5	26.5	16.3	33.3
EMERGENCY, RESCUE	0.4	1.1	0.4	0.7	4.5	3.0	10.5	23.6	21.3	34.5
TRAFFIC SAFETY	4.5	5.3	8.3	7.2	18.1	13.2	12.1	17.7	3.8	9.8
TRAFFIC EASE	5.3	9.9	7.2	10.3	16.7	11.0	11.4	16.0	3.0	9.1
BIKE SAFETY, TRLS	15.7	8.7	11.3	7.0	18.3	8.7	9.1	11.3	3.5	6.5
PEDESTRIAN SAFETY	7.8	5.8	10.5	8.1	18.2	10.1	11.6	13.6	4.3	10.1

PERFORMANCE	1	2	3	4	5	6	7	8	9	10
YARD WASTE PICK-UP	4.1	1.5	1.9	3.0	6.4	6.0	11.2	22.1	16.9	27.0
GARBAGE PICK-UP	3.0	1.5	3.3	3.3	8.2	3.0	10.4	22.3	17.1	27.9
TREE TRIMMING	5.0	1.7	6.7	4.2	13.3	8.3	17.1	20.4	6.3	17.1
DITCH CLEANG/MOWING	5.2	4.8	5.6	5.2	16.7	10.0	14.3	13.5	9.2	15.5
STREET REPAIR	5.5	5.9	7.7	7.7	15.5	10.7	15.1	12.2	7.4	12.2
STREET SIGN REPAIR	2.7	4.2	3.0	5.3	12.9	8.0	16.0	20.9	11.0	16.0
STORMWATER DRAINAGE	5.1	2.8	5.1	8.7	15.7	9.1	13.8	15.4	8.3	16.1
MOSQUITO CONTROL	8.7	5.5	7.1	5.9	16.9	6.3	12.2	16.1	7.5	13.8
DRNKNG WATER SRVCS	5.3	4.5	4.9	3.7	11.0	12.2	15.0	16.7	10.6	16.3
SEWER SERVICES	0.9	4.1	1.8	3.2	16.7	8.6	17.6	23.9	6.3	17.1
PARKS	0.4	2.8	2.4	2.0	8.0	6.4	17.6	27.6	7.6	25.2
RECREATION PROGRAMS	1.8	1.8	3.1	2.2	13.0	10.3	14.8	22.0	10.3	20.6
GROWTH MANAGEMENT	13.8	8.4	6.7	8.4	14.6	7.9	11.3	13.4	5.4	10.0
CODE ENFORCEMENT	4.7	4.3	6.4	4.3	20.4	10.2	11.1	16.6	8.9	13.2
ANIMAL CONTROL	3.9	3.1	4.7	3.1	13.7	7.8	15.2	21.1	10.2	17.2
HEALTH FOR POOR	11.6	8.3	7.9	5.1	14.8	10.6	14.4	9.7	7.9	9.7
SENIOR SERVICES	5.2	4.7	4.7	5.2	13.4	8.2	15.1	17.2	9.1	17.2
CHILD CARE SRVCS	3.4	5.6	8.5	6.2	13.0	9.0	13.0	22.6	5.1	13.6
AFFORD. HOUSING	9.5	9.5	10.0	12.9	15.2	7.6	13.8	7.6	3.3	10.5
PUBLIC LIBRARY	1.5	1.1	0.7	1.8	4.4	5.9	13.6	21.0	16.2	33.8
LIBRARY FOR CHLDRN	2.0	2.5	1.0	2.5	7.9	4.9	15.3	19.7	12.8	31.5

UNINCORPORATED - SPECIFIC SERVICES WORTH

1=WORSE 10=BEST

WORTH	1	2	3	4	5	6	7	8	9	10
SHERIFF SERVICES	2.0	2.0	2.4	1.6	9.9	8.7	14.7	21.4	11.1	26.2
FIRE SERVICES	0.8	1.6	0.4	0.8	6.9	4.5	11.7	28.7	12.1	32.4
EMERGENCY, RESCUE	0.8	0.8	2.8	0.8	4.8	4.0	15.5	20.7	17.5	32.3
TRAFFIC SAFETY	3.2	4.4	5.6	7.2	17.3	11.2	14.5	16.9	6.4	13.3
TRAFFIC EASE	4.0	6.0	7.1	9.1	17.1	10.7	13.5	15.5	3.2	13.9
BIKE SAFETY, TRLS	11.9	10.1	8.3	7.3	14.2	11.9	9.6	11.5	5.5	9.6
PEDESTRIAN SAFETY	6.0	6.9	6.9	6.9	13.7	12.9	14.6	12.9	6.9	12.4
YARD WASTE PICK-UP	2.0	1.6	4.0	2.8	8.0	5.2	12.0	26.1	13.3	24.9
GARBAGE PICK-UP	1.6	0.8	2.4	2.0	6.0	5.2	15.6	24.4	12.0	30.0
TREE TRIMMING	2.6	5.2	4.3	6.1	10.9	9.6	15.7	23.5	6.1	16.1
DITCH CLEANG/MOWING	5.1	4.6	5.5	4.6	11.8	12.7	15.6	16.5	8.0	15.6
STREET REPAIR	5.9	6.7	6.7	6.7	15.4	11.0	15.7	15.4	4.3	12.2
STREET SIGN REPAIR	2.9	3.7	3.7	4.9	13.5	12.3	19.7	15.2	7.4	16.8
STORMWATER DRAINAGE	2.6	3.9	5.2	6.1	17.7	10.4	14.7	17.3	6.9	15.2
MOSQUITO CONTROL	7.7	6.8	6.4	8.5	14.5	11.1	8.9	16.6	6.8	12.8
DRNKNG WATER SRVCS	6.7	1.8	4.4	8.4	12.9	7.1	12.9	23.6	5.3	16.9
SEWER SERVICES	0.5	2.0	3.0	5.5	13.5	11.5	14.0	26.5	8.0	15.5
PARKS	0.4	0.4	3.5	3.5	12.2	8.7	17.5	21.8	7.4	24.5
RECREATION PROGRAMS	1.5	3.0	2.5	5.0	11.9	11.4	12.9	23.3	9.9	18.8
GROWTH MANAGEMENT	14.8	10.0	4.8	8.7	12.2	10.0	10.5	12.2	4.8	11.8
CODE ENFORCEMENT	3.5	5.8	3.1	6.6	19.0	9.3	16.4	16.8	6.2	13.3
ANIMAL CONTROL	3.4	3.4	5.5	5.1	15.2	7.2	12.2	22.4	5.5	20.3
HEALTH FOR POOR	8.1	7.1	7.6	7.1	18.7	10.6	10.6	12.1	6.1	12.1
SENIOR SERVICES	5.3	2.9	4.8	4.8	14.9	9.1	13.5	18.3	5.3	21.2
CHILD CARE SRVCS	4.5	3.2	7.7	10.3	13.5	14.7	14.7	9.6	4.5	17.3
AFFORD. HOUSING	9.6	7.6	11.6	10.6	18.2	11.6	10.6	8.1	2.5	9.6
PUBLIC LIBRARY	0.8	0.4	2.0	1.6	7.5	4.4	13.9	24.2	14.3	31.0
LIBRARY FOR CHLDRN	1.1	2.7	3.8	2.2	9.2	6.0	13.6	16.8	12.0	32.6

MUNICIPALITIES

MUNICIPALITIES - ASPECT OF LIFE CATEGORIES

1=WORST 10=BEST

ASPECTS OF LIFE	1	2	3	4	5	6	7	8	9	10
COUNTY OVERALL	2.2	2.0	2.4	2.8	14.5	9.9	21.6	27.0	7.9	9.7
NEIGHBORHOOD	2.2	2.2	3.7	4.1	13.2	10.3	15.2	20.5	14.2	14.4
RAISE CHILDREN	3.8	2.5	3.4	3.4	14.9	12.0	15.6	19.8	11.8	12.8
CULTURAL OPPORTNTY	2.7	2.5	4.8	5.4	13.5	10.6	19.5	19.1	11.6	10.4
ETHNIC DIVERSITY	3.5	2.5	3.9	5.8	17.0	10.1	14.5	21.1	9.9	11.6
JOB OPPORTNTY	4.2	2.4	3.3	5.0	18.6	13.8	16.9	17.3	8.3	10.1
AFFORD HOUSING	10.5	7.0	11.5	12.3	13.7	12.7	12.3	9.8	4.9	5.3
RETIREMENT	8.7	6.3	6.1	6.3	13.5	8.9	13.1	15.4	7.5	14.3
COUNTY INFORMATION	5.6	5.2	7.1	8.8	17.2	13.6	14.0	14.6	5.4	8.4

MUNICIPALITIES - PERFORMANCE

1=WORST 10=BEST

PERFORMANCE	1	2	3	4	5	6	7	8	9	10
SHERIFF SERVICES	2.4	1.0	2.2	1.6	9.7	7.9	14.6	23.7	15.4	21.3
FIRE SERVICES	1.0	0.8	0.8	0.4	4.1	4.5	12.7	24.0	19.7	31.8
EMERGENCY, RESCUE	1.0	0.6	1.4	1.2	4.1	5.3	11.4	22.4	18.9	33.6
TRAFFIC SAFETY	4.8	3.4	3.2	5.2	18.0	16.0	14.2	18.0	5.6	11.6
TRAFFIC EASE	4.6	5.0	6.6	9.2	15.8	13.8	16.4	15.2	4.4	9.2
BIKE SAFETY, TRLS	12.3	5.0	9.6	11.8	16.0	9.0	13.4	10.5	3.5	8.8
PEDESTRIAN SAFETY	8.7	3.5	8.9	8.9	17.1	9.7	14.0	15.7	4.5	8.9
YARD WASTE PICK-UP	3.6	2.0	3.4	4.3	9.9	7.5	14.8	18.8	14.0	21.7
GARBAGE PICK-UP	3.9	2.3	2.7	2.5	8.3	8.3	14.1	19.3	14.5	24.2
TREE TRIMMING	7.7	4.9	4.7	6.8	13.0	11.1	11.9	16.8	10.0	13.2
DITCH CLEANG/MOWING	5.5	5.5	2.3	6.8	15.4	10.7	15.4	17.3	8.3	12.8
STREET REPAIR	9.0	6.6	6.8	9.4	17.1	12.9	12.5	13.1	4.8	7.8
STREET SIGN REPAIR	3.7	4.1	2.9	2.9	15.3	13.2	13.4	20.6	10.3	13.6
STORMWATER DRAINAGE	6.9	4.4	6.5	7.1	14.3	10.7	14.9	18.7	6.5	10.1
MOSQUITO CONTROL	12.6	4.4	7.2	9.3	13.1	9.1	11.2	16.2	7.4	9.7
DRNKNG WATER SRVCS	6.6	4.2	3.9	3.3	15.1	11.4	16.6	16.8	8.5	13.6
SEWER SERVICES	5.1	1.8	2.7	4.4	14.4	8.2	19.7	21.7	9.5	12.6
PARKS	2.1	1.7	1.7	3.5	7.9	9.4	15.4	24.2	15.9	18.2
RECREATION PROGRAMS	2.3	2.0	2.5	2.9	10.4	9.5	14.1	24.5	15.2	16.6
GROWTH MANAGEMENT	7.8	6.5	5.9	5.5	14.6	9.7	15.4	17.3	7.0	10.3
CODE ENFORCEMENT	4.9	1.8	3.3	6.0	17.0	10.8	17.3	14.2	10.6	14.2
ANIMAL CONTROL	5.6	2.3	2.1	4.2	11.9	10.8	17.5	17.9	10.4	17.3
HEALTH FOR POOR	12.0	6.7	8.4	9.6	17.5	10.3	10.1	9.6	6.3	9.4
SENIOR SERVICES	6.3	3.7	5.1	5.8	17.5	11.0	13.8	16.1	6.8	14.0
CHILD CARE SRVCS	4.6	4.6	5.1	5.6	18.2	11.0	17.9	13.8	6.9	12.3
AFFORD. HOUSING	8.9	7.8	10.6	7.5	18.4	10.4	12.0	12.5	3.8	8.2
PUBLIC LIBRARY	0.8	0.0	1.6	2.3	8.2	6.4	12.3	23.7	16.7	28.0
LIBRARY FOR CHLDRN	1.4	0.2	1.4	2.9	10.3	7.7	13.2	22.8	15.1	24.8

MUNICIPALITIES - SPECIFIC SERVICE WORTH

1=WORST 10=BEST

WORTH	1	2	3	4	5	6	7	8	9	10
SHERIFF SERVICES	3.4	0.5	1.8	4.3	10.7	5.2	15.0	20.2	12.3	26.6
FIRE SERVICES	1.4	0.5	1.4	1.4	7.0	6.1	12.4	18.3	16.3	35.3
EMERGENCY, RESCUE	0.9	1.1	1.5	2.0	7.4	4.6	14.7	16.0	16.2	35.7
TRAFFIC SAFETY	3.2	4.9	4.1	7.5	13.2	14.1	16.8	16.8	6.2	13.2

WORTH	1	2	3	4	5	6	7	8	9	10
TRAFFIC EASE	3.6	5.1	5.1	11.8	13.5	12.4	16.5	15.8	4.7	11.3
BIKE SAFETY, TRLS	8.9	5.3	7.7	9.6	14.9	10.8	12.0	14.7	5.8	10.3
PEDESTRIAN SAFETY	6.0	4.6	4.6	10.1	12.9	12.2	17.1	14.7	6.7	11.1
YARD WASTE PICK-UP	5.2	2.0	2.9	3.8	9.5	9.0	15.8	21.2	11.9	18.7
GARBAGE PICK-UP	3.3	1.1	2.4	3.1	8.1	8.8	11.4	23.7	16.7	21.5
TREE TRIMMING	5.2	3.4	4.1	5.7	13.4	9.3	16.6	17.8	10.9	13.4
DITCH CLEANG/MOWING	5.8	4.2	4.2	5.1	14.3	9.8	19.6	17.1	8.2	11.7
STREET REPAIR	7.3	3.4	7.7	8.0	15.7	12.0	14.4	15.1	7.3	9.0
STREET SIGN REPAIR	3.6	2.7	4.1	3.6	16.2	11.4	14.6	22.1	9.6	12.1
STORMWATER DRAINAGE	7.5	2.7	6.1	6.1	15.9	10.9	14.8	15.2	7.3	13.4
MOSQUITO CONTROL	10.0	3.4	9.3	5.7	13.2	10.0	13.4	18.1	4.8	12.2
DRNKNG WATER SRVCS	6.1	3.7	4.4	4.2	15.2	8.9	11.9	20.8	7.7	16.9
SEWER SERVICES	4.0	2.4	3.6	3.8	13.1	10.7	15.7	20.7	8.3	17.6
PARKS	1.1	1.1	1.6	3.6	8.8	7.9	16.1	22.9	14.3	22.4
RECREATION PROGRAMS	2.5	1.5	3.4	2.7	10.3	6.9	19.0	20.7	12.6	20.4
GROWTH MANAGEMENT	6.2	4.8	8.7	8.7	11.2	9.9	17.4	12.8	8.5	11.7
CODE ENFORCEMENT	3.5	1.6	4.2	5.8	14.3	11.9	16.6	19.6	7.5	15.0
ANIMAL CONTROL	5.9	2.9	1.8	4.1	13.3	8.1	19.8	18.5	9.2	16.4
HEALTH FOR POOR	7.2	6.6	7.9	9.5	14.8	10.2	11.8	13.3	6.4	12.3
SENIOR SERVICES	4.8	2.8	7.0	7.5	13.0	10.5	15.5	15.5	8.3	15.0
CHILD CARE SRVCS	4.6	1.7	4.6	4.3	16.9	10.6	17.5	14.3	10.3	15.2
AFFORD. HOUSING	9.1	4.7	10.6	9.9	14.8	9.4	14.8	10.4	6.4	9.9
PUBLIC LIBRARY	1.1	0.4	1.5	2.8	8.5	7.2	14.1	22.8	15.4	26.2
LIBRARY FOR CHLDRN	1.8	0.5	0.3	4.4	11.6	7.8	12.7	20.7	13.7	26.6

TAMPA

TAMPA - ASPECTS OF LIFE CATEGORIES

1=WORST 10=BEST

ASPECTS OF LIFE	1	2	3	4	5	6	7	8	9	10
COUNTY OVERALL	2.0	2.0	2.5	2.5	14.4	9.9	21.5	28.0	7.7	9.7
NEIGHBORHOOD	2.2	2.2	3.9	4.8	14.3	9.9	15.7	21.0	13.5	12.6
RAISE CHILDREN	3.9	2.6	3.6	3.6	15.2	13.4	15.2	18.8	11.9	11.9
CULTURAL OPPORTNTY	3.0	3.0	4.0	5.3	13.4	10.4	19.7	19.9	10.9	10.4
ETHNIC DIVERSITY	3.5	2.8	3.5	5.1	17.2	10.9	14.9	21.5	9.4	11.1
JOB OPPORTNTY	4.5	2.7	3.5	5.9	17.9	13.9	17.1	17.1	8.0	9.4
AFFORD HOUSING	10.0	8.3	11.3	11.5	13.5	11.3	13.3	10.3	5.5	5.3
RETIREMENT	8.1	6.6	5.4	7.1	13.7	8.1	14.2	14.7	6.9	15.2
COUNTY INFORMATION	5.7	4.9	6.2	8.2	17.5	14.7	14.7	14.4	5.2	8.5

TAMPA - SPECIFIC SERVICE PERFORMANCE

1=WORST 10=BEST

PERFORMANCE	1	2	3	4	5	6	7	8	9	10
SHERIFF SERVICES	2.2	0.7	2.5	1.7	9.4	8.2	13.9	24.6	16.6	20.1
FIRE SERVICES	1.0	0.8	1.0	0.5	4.0	4.3	12.4	24.2	19.9	31.8
EMERGENCY, RESCUE	1.0	0.7	1.0	1.5	3.7	5.2	10.7	22.9	20.2	32.9
TRAFFIC SAFETY	4.9	3.9	2.9	5.6	16.9	15.2	15.4	18.1	5.6	11.3
TRAFFIC EASE	4.4	5.6	7.1	9.3	15.2	13.0	16.7	15.9	3.9	8.8
BIKE SAFETY, TRLS	14.0	4.3	8.1	12.4	14.8	9.2	13.2	10.2	3.8	10.0
PEDESTRIAN SAFETY	9.7	3.3	8.7	9.4	16.3	9.2	15.0	15.3	4.1	9.2
YARD WASTE PICK-UP	2.7	2.2	3.2	4.2	9.1	7.9	15.3	19.8	14.1	21.5
GARBAGE PICK-UP	3.3	2.5	2.8	2.8	7.6	7.4	13.7	20.6	15.5	23.7
TREE TRIMMING	6.9	4.5	4.5	7.4	13.2	12.1	12.9	14.8	10.0	13.7
DITCH CLEANG/MOWING	5.0	5.3	2.4	6.8	15.3	11.1	14.7	16.3	10.0	13.2

PERFORMANCE	1	2	3	4	5	6	7	8	9	10
STREET REPAIR	9.0	7.5	7.3	9.2	16.3	13.4	11.7	12.7	5.4	7.5
STREET SIGN REPAIR	3.3	4.6	3.0	3.3	15.5	13.5	14.0	18.5	10.2	14.2
STORMWATER DRAINAGE	7.4	4.1	6.6	7.4	13.0	12.0	15.3	17.1	6.9	10.0
MOSQUITO CONTROL	12.6	4.6	7.2	9.0	12.6	8.2	10.0	16.7	8.7	10.3
DRNKNG WATER SRVCS	6.0	4.2	3.7	2.9	15.5	11.3	16.8	16.8	8.9	13.9
SEWER SERVICES	4.5	2.1	2.6	5.0	14.5	8.2	20.6	20.1	10.0	12.4
PARKS	2.1	1.3	1.5	3.8	7.7	10.0	16.2	22.6	15.4	19.5
RECREATION PROGRAMS	2.2	1.7	2.2	2.5	11.1	10.0	15.0	23.9	13.9	17.5
GROWTH MANAGEMENT	7.0	6.7	5.4	5.4	14.5	10.4	16.3	17.4	6.2	10.6
CODE ENFORCEMENT	4.3	2.2	2.7	6.5	17.0	11.6	17.0	13.0	10.8	14.9
ANIMAL CONTROL	5.1	2.8	1.8	4.3	11.7	10.9	18.0	18.0	10.4	17.0
HEALTH FOR POOR	12.7	6.5	8.0	9.2	18.6	10.7	9.5	9.8	5.9	9.2
SENIOR SERVICES	6.3	3.7	4.9	6.3	17.1	10.9	14.9	14.6	6.6	14.9
CHILD CARE SRVCS	4.1	4.1	4.4	5.0	18.3	11.7	18.3	13.6	7.6	12.9
AFFORD. HOUSING	9.2	7.2	9.8	7.5	17.5	9.8	13.2	13.2	4.6	8.0
PUBLIC LIBRARY	1.0	0.0	2.0	2.0	7.8	6.8	12.3	25.1	16.6	26.4
LIBRARY FOR CHLDRN	1.5	0.3	1.8	3.2	9.1	8.8	13.5	22.4	15.0	24.4

TAMPA - SPECIFIC SERVICE WORTH

1=WORST 10=BEST

WORTH	1	2	3	4	5	6	7	8	9	10
SHERIFF SERVICES	3.3	0.6	1.7	3.9	10.3	5.8	15.0	19.5	12.5	27.3
FIRE SERVICES	1.1	0.6	1.1	1.1	6.4	6.4	13.1	17.2	17.8	35.3
EMERGENCY, RESCUE	1.1	1.3	1.3	1.6	7.0	4.0	13.7	15.6	17.7	36.6
TRAFFIC SAFETY	3.7	5.0	3.7	8.4	12.3	14.2	17.3	16.8	6.0	12.6
TRAFFIC EASE	4.0	5.3	5.3	11.9	13.0	11.6	17.5	15.9	4.8	10.8
BIKE SAFETY, TRLS	9.0	5.5	7.0	8.7	15.1	11.3	11.0	15.4	5.8	11.0
PEDESTRIAN SAFETY	5.7	4.5	4.3	10.2	12.8	12.8	17.6	13.4	6.8	11.9
YARD WASTE PICK-UP	5.0	1.9	2.8	3.9	9.1	9.1	15.8	21.6	11.6	19.1
GARBAGE PICK-UP	2.9	1.1	1.9	3.5	8.0	8.3	12.3	24.1	16.3	21.7
TREE TRIMMING	5.3	3.1	3.9	6.7	14.0	9.2	16.5	16.5	11.2	13.7
DITCH CLEANING/MOWING	5.5	4.0	4.0	5.2	16.1	8.9	19.0	17.2	8.9	11.2
STREET REPAIR	7.9	3.4	8.5	8.5	16.1	11.1	12.7	15.1	7.7	9.0
STREET SIGN REPAIR	3.4	2.8	3.1	3.4	17.0	11.6	15.3	20.1	10.2	13.0
STORMWATER DRAINAGE	8.3	3.0	6.4	5.8	15.2	11.6	15.0	13.6	7.5	13.6
MOSQUITO CONTROL	10.4	3.6	10.4	5.6	11.8	9.8	12.9	17.4	5.6	12.6
DRNKNG WATER SRVCS	5.9	3.7	4.5	4.0	15.3	8.5	12.1	20.3	7.9	17.8
SEWER SERVICES	4.0	2.6	3.4	4.6	12.8	9.7	16.5	20.2	8.3	17.9
PARKS	1.4	1.4	0.8	4.2	8.9	7.3	17.0	22.1	14.8	22.1
RECREATION PROGRAMS	2.4	1.5	3.7	2.7	10.4	7.0	20.1	18.3	13.4	20.4
GROWTH MANAGEMENT	7.0	4.5	8.6	8.6	10.9	10.0	16.4	13.9	8.1	12.0
CODE ENFORCEMENT	3.7	1.1	4.3	6.8	13.7	10.8	17.7	18.8	8.5	14.5
ANIMAL CONTROL	5.8	2.8	1.9	4.2	13.4	7.5	18.9	18.4	9.7	17.3
HEALTH FOR POOR	7.5	6.6	8.8	8.4	14.7	10.3	9.7	13.8	6.9	13.4
SENIOR SERVICES	4.9	2.8	6.4	8.3	13.1	9.8	15.0	15.6	8.6	15.6
CHILD CARE SRVCS	4.9	1.7	4.9	4.2	15.7	10.1	17.5	14.7	10.5	15.7
AFFORD. HOUSING	9.1	4.2	10.0	10.0	14.2	9.4	14.2	11.2	6.7	10.9
PUBLIC LIBRARY	1.1	0.0	1.3	3.2	9.1	7.2	14.2	22.7	15.2	25.9
LIBRARY FOR CHLDRN	1.9	0.6	0.3	4.1	11.5	8.0	13.1	19.4	14.3	26.8

TEMPLE TERRACE - CAUTION: SMALL SAMPLE AND POSSIBLE ERRORS

TEMPLE TERRACE - ASPECTS OF LIFE CATEGORIES

1=WORST 10=BEST

ASPECTS of life	1	2	3	4	5	6	7	8	9	10
COUNTY OVERALL	4.5	0.0	0.0	4.5	27.3	13.6	27.3	9.1	13.6	0.0
NEIGHBORHOOD	0.0	0.0	9.1	4.5	9.1	22.7	18.2	9.1	13.6	13.6
RAISE CHILDREN	5.3	0.0	5.3	5.3	15.8	10.5	26.3	15.8	10.5	5.3
CULTURAL OPPORTNTY	0.0	0.0	4.8	14.3	28.6	14.3	14.3	4.8	14.3	4.8
ETHNIC DIVERSITY	0.0	0.0	4.8	23.8	23.8	14.3	14.3	4.8	9.5	4.8
JOB OPPORTNTY	0.0	5.0	0.0	0.0	25.0	20.0	20.0	10.0	15.0	5.0
AFFORD HOUSING	9.1	0.0	4.5	22.7	9.1	18.2	18.2	13.6	0.0	4.5
RETIREMENT	13.6	0.0	4.5	4.5	9.1	27.3	4.5	22.7	9.1	4.5
COUNTY INFORMATION	9.1	4.5	9.1	9.1	22.7	4.5	9.1	22.7	0.0	9.1

TEMPLE TERRACE - SPECIFIC SERVICE PERFORMANCE

1=WORST 10=BEST
PERFORMANCE

	1	2	3	4	5	6	7	8	9	10
SHERIFF SERVICES	4.8	4.8	0.0	0.0	4.8	9.5	19.0	14.3	9.5	33.3
FIRE SERVICES	4.5	0.0	0.0	0.0	4.5	9.1	18.2	13.6	18.2	31.8
EMERGENCY, RESCUE	0.0	0.0	4.8	0.0	4.8	9.5	19.0	14.3	4.8	42.9
TRAFFIC SAFETY	4.3	0.0	4.3	8.7	17.4	21.7	8.7	21.7	0.0	13.0
TRAFFIC EASE	8.7	0.0	8.7	8.7	17.4	21.7	8.7	8.7	4.3	13.0
BIKE SAFETY, TRLS	4.8	0.0	9.5	19.0	19.0	9.5	9.5	19.0	4.8	4.8
PEDESTRIAN SAFETY	4.3	8.7	21.7	17.4	8.7	21.7	0.0	4.3	8.7	4.3
YARD WASTE PICK-UP	0.0	4.8	4.8	4.8	14.3	14.3	14.3	19.0	4.8	19.0
GARBAGE PICK-UP	0.0	4.5	0.0	0.0	9.1	18.2	18.2	13.6	4.5	31.8
TREE TRIMMING	4.5	4.5	9.1	4.5	13.6	13.6	4.5	22.7	13.6	9.1
DITCH CLEANG/MOWING	0.0	9.1	4.5	9.1	27.3	13.6	22.7	9.1	0.0	4.5
STREET REPAIR	4.3	4.3	4.3	8.7	34.8	8.7	0.0	30.4	0.0	4.3
STREET SIGN REPAIR	0.0	4.5	4.5	0.0	18.2	18.2	9.1	27.3	4.5	13.6
STORMWATER DRAINAGE	4.3	8.7	4.3	13.0	26.1	4.3	8.7	21.7	4.3	4.3
MOSQUITO CONTROL	4.8	4.8	9.5	19.0	4.8	33.3	14.3	4.8	0.0	4.8
DRNKNG WATER SRVCS	11.8	0.0	5.9	0.0	29.4	5.9	17.6	17.6	5.9	5.9
SEWER SERVICES	10.5	0.0	10.5	5.3	21.1	5.3	15.8	21.1	0.0	10.5
PARKS	0.0	9.1	4.5	4.5	13.6	9.1	18.2	27.3	13.6	0.0
RECREATION PROGRAMS	5.0	5.0	5.0	15.0	10.0	15.0	5.0	20.0	15.0	5.0
GROWTH MANAGEMENT	9.1	9.1	9.1	9.1	18.2	9.1	13.6	9.1	9.1	4.5
CODE ENFORCEMENT	13.6	0.0	4.5	13.6	13.6	4.5	9.1	9.1	18.2	13.6
ANIMAL CONTROL	9.5	0.0	4.8	4.8	9.5	14.3	9.5	28.6	0.0	19.0
HEALTH FOR POOR	10.0	15.0	10.0	10.0	5.0	25.0	5.0	15.0	0.0	5.0
SENIOR SERVICES	5.0	10.0	5.0	5.0	15.0	5.0	10.0	25.0	5.0	15.0
CHILD CARE SRVCS	0.0	15.8	0.0	15.8	10.5	10.5	15.8	21.1	5.3	5.3
AFFORD. HOUSING	0.0	15.8	10.5	15.8	10.5	21.1	10.5	5.3	0.0	10.5
PUBLIC LIBRARY	0.0	0.0	0.0	4.5	9.1	9.1	9.1	13.6	13.6	40.9
LIBRARY FOR CHLDRN	0.0	0.0	0.0	0.0	11.1	11.1	11.1	27.8	22.2	16.7

TEMPLE TERRACE - SPECIFIC SERVICE WORTH

1=WORST 10=BEST
WORTH

	1	2	3	4	5	6	7	8	9	10
SHERIFF SERVICES	5.3	0.0	5.3	10.5	10.5	0.0	10.5	10.5	15.8	31.6
FIRE SERVICES	5.6	0.0	0.0	0.0	11.1	11.1	5.6	16.7	11.1	38.9
EMERGENCY, RESCUE	0.0	0.0	5.0	5.0	5.0	20.0	10.0	10.0	10.0	35.0
TRAFFIC SAFETY	0.0	4.8	4.8	4.8	14.3	23.8	14.3	19.0	9.5	4.8
TRAFFIC EASE	0.0	0.0	8.7	4.3	21.7	26.1	13.0	13.0	4.3	8.7
BIKE SAFETY, TRLS	0.0	5.9	0.0	23.5	5.9	23.5	17.6	5.9	11.8	5.9
PEDESTRIAN SAFETY	4.5	9.1	4.5	18.2	9.1	9.1	18.2	9.1	9.1	9.1
YARD WASTE PICK-UP	0.0	0.0	5.0	10.0	20.0	20.0	20.0	10.0	5.0	10.0
GARBAGE PICK-UP	0.0	0.0	5.6	5.6	11.1	16.7	11.1	22.2	11.1	16.7

WORTH	1	2	3	4	5	6	7	8	9	10
TREE TRIMMING	4.8	0.0	9.5	0.0	9.5	9.5	23.8	23.8	14.3	4.8
DITCH CLEANG/MOWING	0.0	0.0	22.2	5.6	5.6	11.1	27.8	22.2	5.6	0.0
STREET REPAIR	4.5	4.5	4.5	9.1	9.1	22.7	13.6	22.7	9.1	0.0
STREET SIGN REPAIR	0.0	0.0	14.3	4.8	14.3	9.5	14.3	28.6	4.8	9.5
STORMWATER DRAINAGE	0.0	0.0	9.5	9.5	14.3	9.5	19.0	28.6	9.5	0.0
MOSQUITO CONTROL	4.5	0.0	4.5	13.6	22.7	13.6	18.2	18.2	0.0	4.5
DRNKG WATER SRVCS	16.7	0.0	5.6	5.6	11.1	11.1	11.1	22.2	11.1	5.6
SEWER SERVICES	5.3	0.0	10.5	0.0	10.5	21.1	5.3	26.3	15.8	5.3
PARKS	0.0	0.0	10.0	0.0	5.0	20.0	20.0	30.0	0.0	15.0
RECREATION PROGRAMS	0.0	0.0	5.3	5.3	10.5	5.3	15.8	47.4	0.0	10.5
GROWTH MANAGEMENT	0.0	10.0	15.0	0.0	25.0	10.0	15.0	5.0	20.0	0.0
CODE ENFORCEMENT	11.1	0.0	5.6	5.6	16.7	11.1	16.7	16.7	5.6	11.1
ANIMAL CONTROL	5.0	10.0	0.0	5.0	10.0	10.0	25.0	10.0	5.0	20.0
HEALTH FOR POOR	0.0	22.2	0.0	16.7	5.6	5.6	33.3	16.7	0.0	0.0
SENIOR SERVICES	0.0	6.3	6.3	6.3	6.3	25.0	18.8	12.5	6.3	12.5
CHILD CARE SRVCS	0.0	0.0	0.0	14.3	14.3	21.4	21.4	14.3	7.1	7.1
AFFORD. HOUSING	15.0	10.0	10.0	10.0	15.0	5.0	30.0	0.0	5.0	0.0
PUBLIC LIBRARY	0.0	0.0	0.0	0.0	4.5	4.5	22.7	13.6	13.6	40.9
LIBRARY FOR CHLDRN	0.0	0.0	0.0	5.9	17.6	5.9	17.6	17.6	11.8	23.5

PLANT CITY – CAUTION: SMALL SAMPLE AND POSSIBLE ERRORS

PLANT CITY - ASPECT OF LIFE CATEGORIES

1=WORST 10=BEST

ASPECTS OF LIFE	1	2	3	4	5	6	7	8	9	10
COUNTY OVERALL	2.9	2.9	2.9	4.3	11.4	8.6	20.0	27.1	7.1	12.9
NEIGHBORHOOD	2.8	2.8	1.4	0.0	8.5	8.5	11.3	21.1	18.3	25.4
RAISE CHILDREN	2.9	2.9	1.5	1.5	13.2	4.4	14.7	26.5	11.8	20.6
CULTURAL OPPORTNTY	1.5	0.0	9.2	3.1	9.2	10.8	20.0	18.5	15.4	12.3
ETHNIC DIVERSITY	4.5	1.5	6.0	4.5	13.4	4.5	11.9	23.9	13.4	16.4
JOB OPPORTNTY	3.2	0.0	3.2	1.6	21.0	11.3	14.5	21.0	8.1	16.1
AFFORD HOUSING	13.6	1.5	15.2	13.6	16.7	19.7	4.5	6.1	3.0	6.1
RETIREMENT	10.8	6.2	10.8	1.5	13.8	7.7	9.2	16.9	10.8	12.3
COUNTY INFORMATION	4.4	7.4	11.8	11.8	13.2	10.3	11.8	13.2	8.8	7.4

PLANT CITY - SPECIFIC SERVICE PERFORMANCE

1=WORST 10=BEST

PERFORMANCE	1	2	3	4	5	6	7	8	9	10
SHERIFF SERVICES	2.9	1.4	1.4	1.4	13.0	5.8	17.4	21.7	10.1	24.6
FIRE SERVICES	0.0	1.4	0.0	0.0	4.3	4.3	13.0	26.1	18.8	31.9
EMERGENCY, RESCUE	1.4	0.0	2.9	0.0	5.8	4.3	13.0	21.7	15.9	34.1
TRAFFIC SAFETY	4.3	1.4	4.3	1.4	24.6	18.8	8.7	15.9	7.2	13.0
TRAFFIC EASE	4.3	2.9	2.9	8.6	18.6	15.7	17.1	12.9	7.1	10.0
BIKE SAFETY, TRLS	4.7	10.9	18.8	6.3	21.9	7.8	15.6	9.4	1.6	3.1
PEDESTRIAN SAFETY	4.4	2.9	5.9	2.9	25.0	8.8	13.2	22.1	5.9	8.8
YARD WASTE PICK-UP	10.3	0.0	4.4	4.4	13.2	2.9	11.8	13.2	16.2	23.5
GARBAGE PICK-UP	8.8	0.0	2.9	1.5	11.8	10.3	14.7	13.2	11.8	25.0
TREE TRIMMING	13.0	7.2	4.3	4.3	11.6	4.3	8.7	26.1	8.7	11.6
DITCH CLEANG/MOWING	10.4	6.0	1.5	6.0	11.9	7.5	16.4	25.4	1.5	13.4
STREET REPAIR	10.3	1.5	4.4	10.3	16.2	11.8	22.1	10.3	2.9	10.3
STREET SIGN REPAIR	7.2	1.4	1.4	1.4	13.0	10.1	11.6	30.4	13.0	10.1
STORMWATER DRAINAGE	4.8	4.8	6.3	3.2	17.5	4.8	14.3	27.0	4.8	12.7
MOSQUITO CONTROL	15.4	3.1	6.2	7.7	18.5	6.2	16.9	16.9	1.5	7.7
DRNKG WATER SRVCS	8.5	5.1	5.1	6.8	8.5	13.6	15.3	16.9	6.8	13.6

PERFORMANCE	1	2	3	4	5	6	7	8	9	10
SEWER SERVICES	7.4	0.0	0.0	0.0	11.1	9.3	14.8	33.3	9.3	14.8
PARKS	3.0	1.5	1.5	1.5	7.5	6.0	10.4	32.8	19.4	16.4
RECREATION PROGRAMS	1.6	3.3	3.3	1.6	6.6	4.9	11.5	29.5	23.0	14.8
GROWTH MANAGEMENT	12.1	4.5	7.6	4.5	13.6	6.1	10.6	19.7	10.6	10.6
CODE ENFORCEMENT	5.0	0.0	6.7	0.0	18.3	8.3	21.7	23.3	6.7	10.0
ANIMAL CONTROL	7.7	0.0	3.1	3.1	13.8	9.2	16.9	13.8	13.8	18.5
HEALTH FOR POOR	8.6	5.2	10.3	12.1	15.5	3.4	15.5	6.9	10.3	12.1
SENIOR SERVICES	6.8	1.7	6.8	3.4	20.3	13.6	8.5	22.0	8.5	8.5
CHILD CARE SRVCS	9.1	3.6	10.9	5.5	20.0	7.3	16.4	12.7	3.6	10.9
AFFORD. HOUSING	10.3	8.6	15.5	5.2	25.9	10.3	5.2	10.3	0.0	8.6
PUBLIC LIBRARY	0.0	0.0	0.0	3.0	10.6	3.0	13.6	18.2	18.2	33.3
LIBRARY FOR CHLDRN	1.7	0.0	0.0	1.7	17.2	0.0	12.1	24.1	13.8	29.3

PLANT CITY - SPECIFIC SERVICE WORTH

1=WORST 10=BEST

WORTH	1	2	3	4	5	6	7	8	9	10
SHERIFF SERVICES	3.2	0.0	1.6	4.8	12.9	3.2	16.1	27.4	9.7	21.0
FIRE SERVICES	1.6	0.0	3.1	3.1	9.4	3.1	10.9	25.0	9.4	34.4
EMERGENCY, RESCUE	0.0	0.0	1.5	3.1	10.8	3.1	21.5	20.0	9.2	30.8
TRAFFIC SAFETY	1.5	4.5	6.0	3.0	17.9	10.4	14.9	16.4	6.0	19.4
TRAFFIC EASE	3.0	6.1	3.0	13.6	13.6	12.1	12.1	16.7	4.5	15.2
BIKE SAFETY, TRLS	10.9	3.6	14.5	10.9	16.4	3.6	16.4	12.7	3.6	7.3
PEDESTRIAN SAFETY	8.3	3.3	6.7	6.7	15.0	10.0	13.3	25.0	5.0	6.7
YARD WASTE PICK-UP	7.9	3.2	3.2	1.6	7.9	4.8	14.3	22.2	15.9	19.0
GARBAGE PICK-UP	6.3	1.6	4.7	0.0	7.8	9.4	6.3	21.9	20.3	21.9
TREE TRIMMING	5.0	6.7	3.3	1.7	11.7	10.0	15.0	23.3	8.3	15.0
DITCH CLEANG/MOWING	9.7	6.5	0.0	4.8	6.5	14.5	21.0	14.5	4.8	17.7
STREET REPAIR	4.6	3.1	4.6	4.6	15.4	13.8	24.6	12.3	4.6	12.3
STREET SIGN REPAIR	6.2	3.1	6.2	4.6	12.3	10.8	10.8	30.8	7.7	7.7
STORMWATER DRAINAGE	5.2	1.7	3.4	6.9	20.7	6.9	12.1	20.7	5.2	17.2
MOSQUITO CONTROL	9.7	3.2	4.8	3.2	17.7	9.7	14.5	22.6	1.6	12.9
DRNKNG WATER SRVCS	3.6	5.5	3.6	5.5	16.4	10.9	10.9	23.6	5.5	14.5
SEWER SERVICES	4.0	2.0	2.0	0.0	16.0	14.0	14.0	22.0	6.0	20.0
PARKS	0.0	0.0	3.2	1.6	9.5	7.9	9.5	25.4	15.9	27.0
RECREATION PROGRAMS	3.4	1.7	1.7	1.7	10.2	6.8	13.6	25.4	11.9	23.7
GROWTH MANAGEMENT	3.5	5.3	7.0	12.3	8.8	8.8	24.6	8.8	7.0	14.0
CODE ENFORCEMENT	0.0	5.1	3.4	0.0	16.9	18.6	10.2	25.4	1.7	18.6
ANIMAL CONTROL	6.2	1.5	1.5	3.1	13.8	10.8	23.1	21.5	7.7	10.8
HEALTH FOR POOR	7.5	1.9	5.7	13.2	18.9	11.3	17.0	9.4	5.7	9.4
SENIOR SERVICES	5.4	1.8	10.7	3.6	14.3	10.7	17.9	16.1	7.1	12.5
CHILD CARE SRVCS	4.1	2.0	4.1	2.0	24.5	10.2	16.3	12.2	10.2	14.3
AFFORD. HOUSING	7.3	5.5	14.5	9.1	18.2	10.9	12.7	9.1	5.5	7.3
PUBLIC LIBRARY	1.5	3.1	3.1	1.5	6.2	7.7	10.8	26.2	16.9	23.1
LIBRARY FOR CHLDRN	1.8	0.0	0.0	5.4	10.7	7.1	8.9	28.6	10.7	26.8

AFRICAN AMERICAN

AFRICAN AMERICAN - ASPECTS OF LIFE CATEGORIES

1=WORST 10=BEST

ASPECTS OF LIFE	1	2	3	4	5	6	7	8	9	10
COUNTY OVERALL	3.1	0.8	1.6	2.3	19.5	11.7	19.5	22.7	7.0	11.7
NEIGHBORHOOD	2.2	2.2	6.7	3.0	15.7	10.4	12.7	20.1	14.9	11.9
RAISE CHILDREN	3.1	4.6	1.5	1.5	10.0	14.6	21.5	17.7	13.8	11.5
CULTURAL OPPORTNTY	3.9	4.7	5.5	7.9	19.7	10.2	20.5	10.2	9.4	7.9

ASPECTS OF LIFE	1	2	3	4	5	6	7	8	9	10
ETHNIC DIVERSITY	5.4	3.9	8.5	7.8	20.9	7.0	10.9	20.2	8.5	7.0
JOB OPPORTNTY	5.0	4.1	6.6	5.0	19.0	18.2	15.7	11.6	6.6	8.3
AFFORD HOUSING	12.4	8.5	14.7	14.0	15.5	10.9	10.9	7.0	1.6	4.7
RETIREMENT	7.6	4.6	6.9	6.9	19.1	6.1	6.9	15.3	7.6	19.1
COUNTY INFORMATION	4.8	5.6	4.8	12.0	21.6	10.4	16.8	12.0	5.6	6.4

AFRICAN AMERICAN - SPECIFIC SERVICE PERFORMANCE

1=WORST 10=BEST

PERFORMANCE	1	2	3	4	5	6	7	8	9	10
SHERIFF SERVICES	0.8	1.6	3.2	2.4	18.4	8.0	12.8	17.6	13.6	21.6
FIRE SERVICES	1.6	0.0	2.3	0.8	7.0	6.3	15.6	19.5	15.6	31.3
EMERGENCY, RESCUE	1.5	0.0	1.5	1.5	9.2	5.3	9.2	19.8	20.6	31.3
TRAFFIC SAFETY	4.5	3.0	3.0	6.1	14.4	13.6	10.6	21.2	7.6	15.9
TRAFFIC EASE	1.6	3.9	5.5	10.2	19.5	11.7	12.5	14.8	7.0	13.3
BIKE SAFETY, TRLS	14.8	8.2	5.7	13.9	17.2	9.0	9.8	9.8	5.7	5.7
PEDESTRIAN SAFETY	10.2	3.1	7.8	7.8	21.1	10.2	10.2	19.5	4.7	5.5
YARD WASTE PICK-UP	5.3	1.5	3.0	5.3	12.0	12.0	12.0	15.8	12.8	20.3
GARBAGE PICK-UP	6.9	0.8	3.1	4.6	10.0	6.2	15.4	16.2	13.1	23.8
TREE TRIMMING	9.2	3.1	3.8	8.5	12.3	10.0	13.8	16.2	10.0	13.1
DITCH CLEANG/MOWING	5.6	4.0	1.6	6.4	19.2	11.2	14.4	12.0	9.6	16.0
STREET REPAIR	10.4	6.0	6.7	6.7	19.4	9.0	12.7	12.7	6.0	10.4
STREET SIGN REPAIR	4.5	4.5	2.3	2.3	17.3	9.0	17.3	18.0	12.0	12.8
STORMWATER DRAINAGE	7.0	3.1	3.9	7.0	21.1	7.0	14.8	17.2	6.3	12.5
MOSQUITO CONTROL	15.0	4.7	11.0	9.4	18.1	7.1	8.7	10.2	6.3	9.4
DRNKNG WATER SRVCS	9.1	7.4	6.6	5.0	17.4	10.7	14.0	12.4	5.0	12.4
SEWER SERVICES	3.3	2.5	5.0	5.0	25.0	8.3	17.5	13.3	7.5	12.5
PARKS	1.6	0.0	2.4	3.9	8.7	11.8	19.7	19.7	13.4	18.9
RECREATION PROGRAMS	1.6	0.0	2.4	1.6	13.0	10.6	18.7	23.6	13.8	14.6
GROWTH MANAGEMENT	4.0	4.0	6.3	2.4	16.7	7.1	23.0	17.5	6.3	12.7
CODE ENFORCEMENT	3.2	0.8	1.6	4.0	18.5	8.1	21.0	14.5	12.9	15.3
ANIMAL CONTROL	7.9	1.6	3.9	4.7	11.8	7.9	18.1	14.2	10.2	19.7
HEALTH FOR POOR	15.2	6.4	8.8	9.6	21.6	8.0	7.2	7.2	7.2	8.8
SENIOR SERVICES	7.3	4.1	4.1	4.9	23.6	7.3	12.2	17.1	9.8	9.8
CHILD CARE SRVCS	2.7	5.4	7.1	4.5	17.9	8.9	12.5	18.8	8.9	13.4
AFFORD. HOUSING	5.7	10.6	13.8	9.8	18.7	3.3	10.6	12.2	4.1	11.4
PUBLIC LIBRARY	0.8	0.0	1.5	2.3	8.5	9.2	10.0	26.9	16.2	24.6
LIBRARY FOR CHLDRN	1.8	0.0	2.6	1.8	7.0	12.3	12.3	21.1	16.7	24.6

AFRICAN AMERICAN - SPECIFIC SERVICE WORTH

1=WORST 10=BEST

WORTH	1	2	3	4	5	6	7	8	9	10
SHERIFF SERVICES	3.4	0.9	1.7	4.3	16.4	6.0	16.4	10.3	15.5	25.0
FIRE SERVICES	1.7	0.8	0.8	0.8	5.9	11.8	15.1	16.0	14.3	32.8
EMERGENCY, RESCUE	0.0	3.2	0.8	2.4	7.1	4.8	15.9	11.9	19.0	34.9
TRAFFIC SAFETY	2.3	6.1	3.8	8.4	13.7	10.7	16.8	16.8	7.6	13.7
TRAFFIC EASE	3.3	3.3	5.7	10.6	15.4	9.8	19.5	13.8	6.5	12.2
BIKE SAFETY, TRLS	9.3	7.6	6.8	6.8	20.3	12.7	10.2	14.4	5.9	5.9
PEDESTRIAN SAFETY	5.0	4.2	5.0	10.9	13.4	12.6	20.2	13.4	7.6	7.6
YARD WASTE PICK-UP	7.9	1.6	2.4	2.4	8.7	7.9	11.8	26.0	13.4	18.1
GARBAGE PICK-UP	5.6	0.8	2.4	3.2	7.9	6.3	11.1	19.0	21.4	22.2
TREE TRIMMING	6.3	3.2	3.2	7.1	7.9	9.5	17.5	17.5	12.7	15.1
DITCH CLEANG/MOWING	6.8	5.1	3.4	5.1	14.5	7.7	20.5	13.7	9.4	13.7
STREET REPAIR	7.8	4.7	6.3	8.6	15.6	11.7	16.4	15.6	3.9	9.4
STREET SIGN REPAIR	5.6	4.0	0.8	4.8	12.9	12.9	14.5	21.8	12.1	10.5

WORTH	1	2	3	4	5	6	7	8	9	10
STORMWATER DRAINAGE	6.4	3.2	7.2	6.4	19.2	7.2	12.8	14.4	8.8	14.4
MOSQUITO CONTROL	13.3	4.2	9.2	7.5	15.0	10.8	9.2	15.0	5.8	10.0
DRNKNG WATER SRVCS	6.8	7.7	8.5	3.4	16.2	9.4	6.8	17.9	6.0	17.1
SEWER SERVICES	2.6	3.4	3.4	7.7	12.8	14.5	14.5	13.7	9.4	17.9
PARKS	0.8	0.8	0.8	5.7	10.7	8.2	17.2	23.0	13.1	19.7
RECREATION PROGRAMS	2.6	0.9	4.4	0.9	11.4	5.3	18.4	21.9	12.3	21.9
GROWTH MANAGEMENT	4.0	8.0	2.4	4.8	13.6	10.4	16.8	14.4	9.6	16.0
CODE ENFORCEMENT	1.7	1.7	2.5	4.2	11.9	10.2	23.7	17.8	5.1	21.2
ANIMAL CONTROL	5.6	4.8	2.4	4.8	14.5	4.8	14.5	20.2	8.9	19.4
HEALTH FOR POOR	8.5	9.3	6.8	8.5	13.6	10.2	9.3	9.3	10.2	14.4
SENIOR SERVICES	5.9	2.5	5.0	8.4	13.4	10.1	14.3	13.4	10.9	16.0
CHILD CARE SRVCS	4.6	1.9	8.3	5.6	10.2	6.5	13.9	20.4	8.3	20.4
AFFORD. HOUSING	12.0	6.4	11.2	14.4	14.4	3.2	9.6	10.4	8.8	9.6
PUBLIC LIBRARY	2.3	0.8	3.9	4.7	8.6	7.8	14.1	21.1	16.4	20.3
LIBRARY FOR CHLDRN	3.5	0.0	1.8	6.2	5.3	8.8	15.0	15.0	16.8	27.4