



SUSTAINABILITY



ENERGY | ENVIRONMENT | ECONOMICS



ENVIRONMENTAL STEWARDSHIP: MEETING THE E3 CHALLENGE IN BROWARD COUNTY

Donald Burgess
Climate Change Task Force Liaison
Broward County Natural Resources
Planning and Management Division





OVERVIEW

- Objectives
- Climate Change Policy Directives
- Energy-related Activities
- Environment-related Activities
- Economic-related Activities
- Future Actions
- Conclusions



OBJECTIVES

- Provide an update on Broward County's Environmental Stewardship Policies with an emphasis on our Climate Change Policy Initiatives
- Share information which may assist you in establishing best practices in your jurisdiction



SELECT CLIMATE ACTION BY THE BOARD

- Adopted U.S. Mayors Climate Protection Agreement
- Created Climate Change Task Force
- Accepted Government Operations Climate Change Report
- Adopted Waxman Principles for global warming legislation and the “Safe Climate Act”
- Adopted LEED standards for all new County buildings
- Supported ICLEI membership & Climate Protection Campaign
- Adopted Cool Counties Initiative and GHG targets



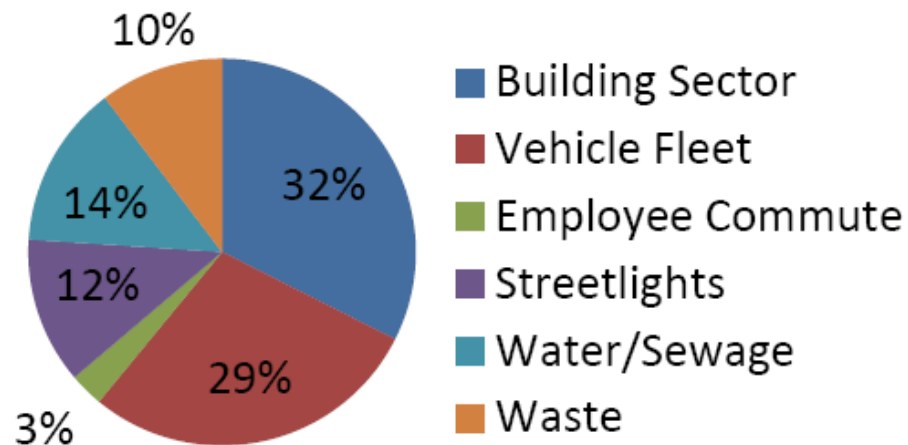
CLIMATE CHANGE POLICY DIRECTIVES

- **County** Government Operations Reduction Goals
 - Minimum 7% below 1997 levels by 2015
 - Support efforts to achieve a regional 80% reduction by 2050
- **Regional** Greenhouse Gas Reductions Goals
 - 80% reduction community wide by 2050
 - Requires 10% reduction every 5 years after 2010



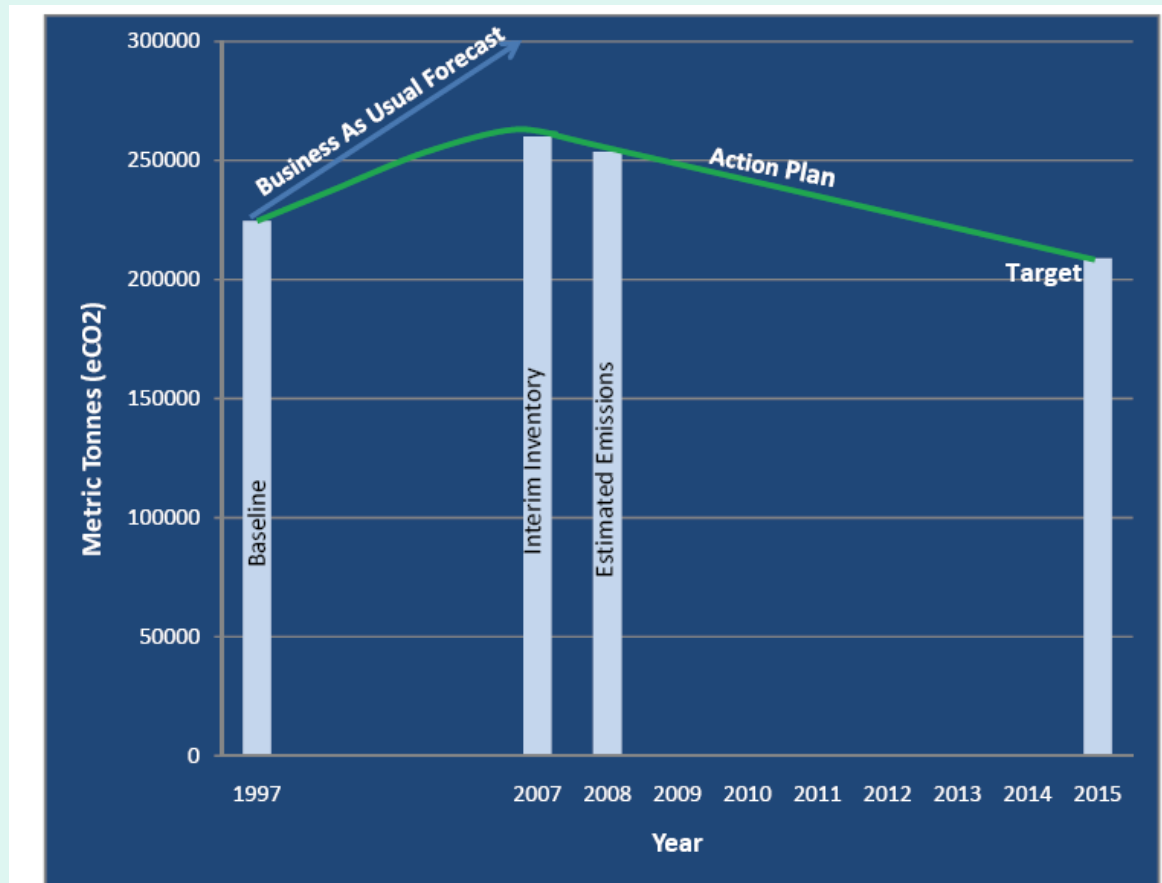
COUNTY GOVERNMENT OPERATIONS

- **Emissions:** 2007 Broward County Government Operations Greenhouse Gas emissions. Total: 259,958 tonnes eCO₂





GHG EMISSIONS AND PROJECTION ESTIMATES





COUNTY GOVERNMENT OPERATIONS

- The County's goal is to reduce County government operations GHG emissions by 7% below the 1997 baseline by 2015
- To meet the established 2015 target of 208,848 tonnes eCO₂, Broward County operations must reduce an additional 51,110 tonnes eCO₂ from 2007 emissions levels by 2015, an estimated 6,389 tonnes per year
- In 2008, Broward County met and exceeded its annual reduction goal with an estimated reduction of 10,184 tonnes eCO₂.



ENERGY CONSERVATION MEASURES



First LEED Building: Broward County South Regional Library



Broward County Environmental Monitoring Lab Built to LEED standards



LED Traffic Signals



Building Retrofit Projects



TRANSPORTATION



Broward County Transit Hybrid Bus



Fleet Vehicle powered by CNG



Toyota Prius Hybrid Electric Fleet Vehicle



Rental Car Center at the Airport



COMMUNITY-WIDE EMISSIONS INVENTORY

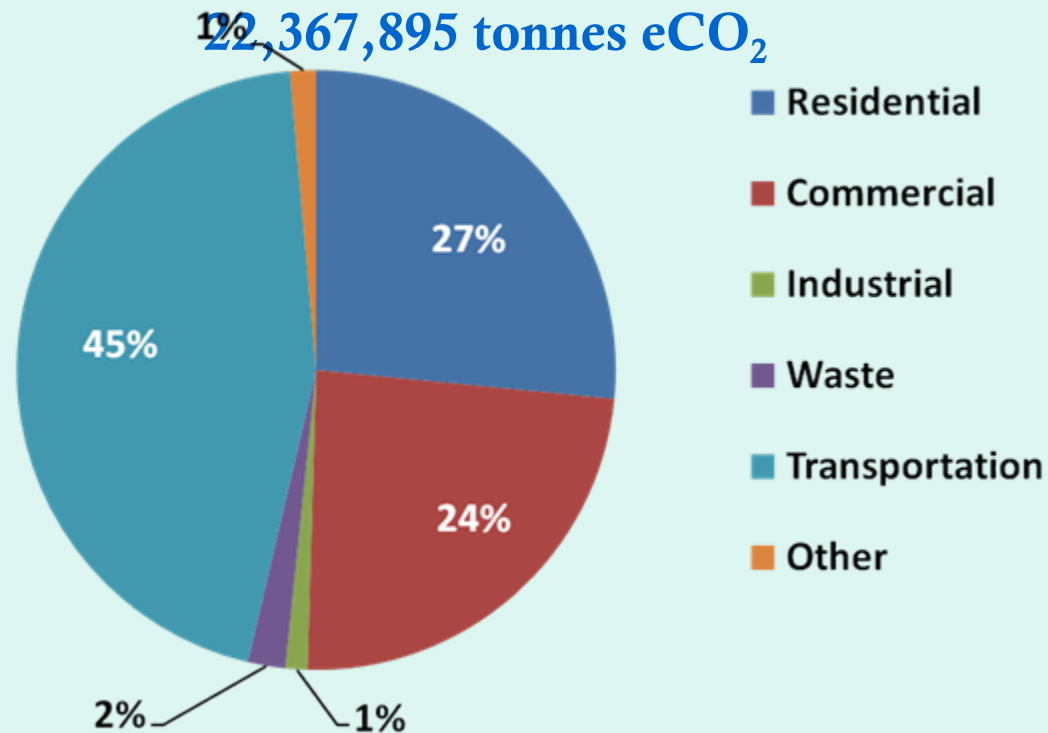
Broward County's Community-wide GHG emissions inventory captures emissions from all community-related activities.

- Residential Buildings
- Commercial Buildings
- Industrial Buildings
- Transportation
- Waste
- Aircraft





BROWARD COUNTY'S 2007 COMMUNITY-WIDE GHG EMISSIONS





CLIMATE CHANGE TASK FORCE

- Created June 2008 by Commission
- 25 members
- Academic, business, economic, governmental, energy, transportation, and environmental interests
- Develop a mitigation and adaptation program
- Monthly meetings began December 5, 2008



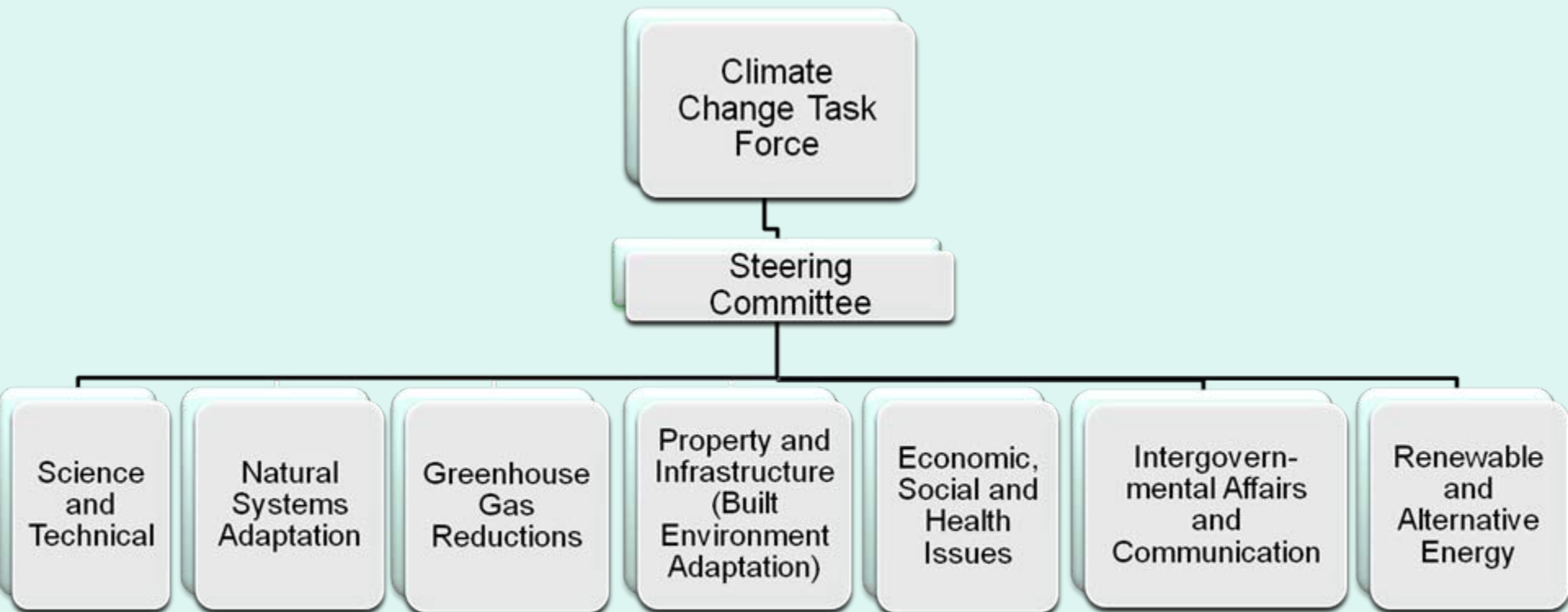
CCTF DUTIES AND RESPONSIBILITIES

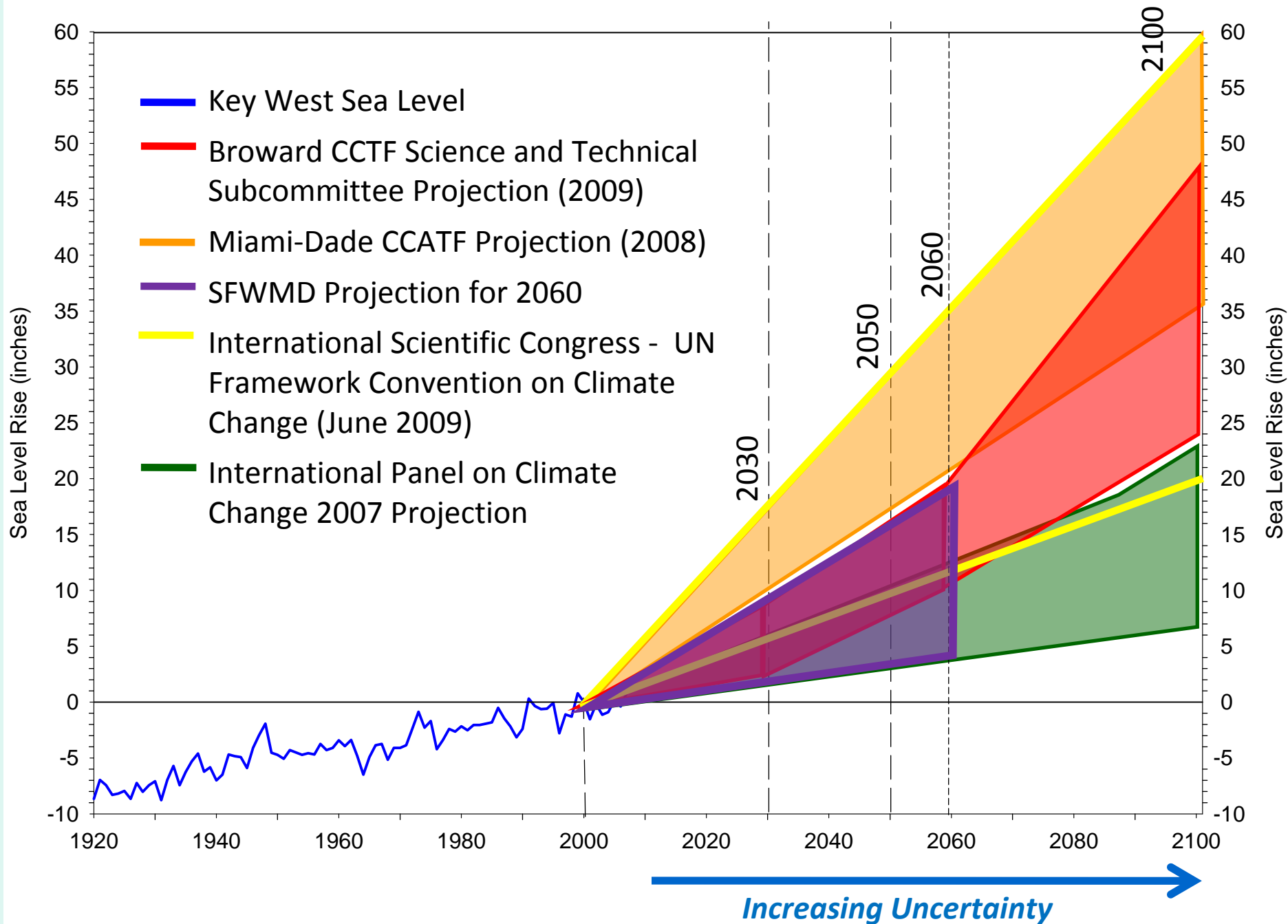
Develop a Climate Change Program, to include:

- Projects that conserve energy and reduce GHG emissions within government operations
- Incentives for residences, businesses and organizations to conserve energy and reduce emissions
- Adaptation strategies to alleviate adverse consequences of climate change (sea level rise, hurricanes)
- Education and outreach
- Pursuit of grants, cost savings, and other program cost offsets



CLIMATE CHANGE TASK FORCE SUBCOMMITTEES







CLIMATE CHANGE TASK FORCE

- Subcommittees developed 175 actions for consideration
- At January 21, 2010 meeting the Task Force approved 65 of 175 actions to be considered critical to meet the mission of the Task Force
- At February 18, 2010 meeting we will present the Climate Change Action Plan
- Anticipate bringing Action Plan to County Commission in late March or early April 2010



ENVIRONMENTAL SUSTAINABILITY



Deerfield Beach
Middle School
Demonstration Project



NatureScape



Land Preservation

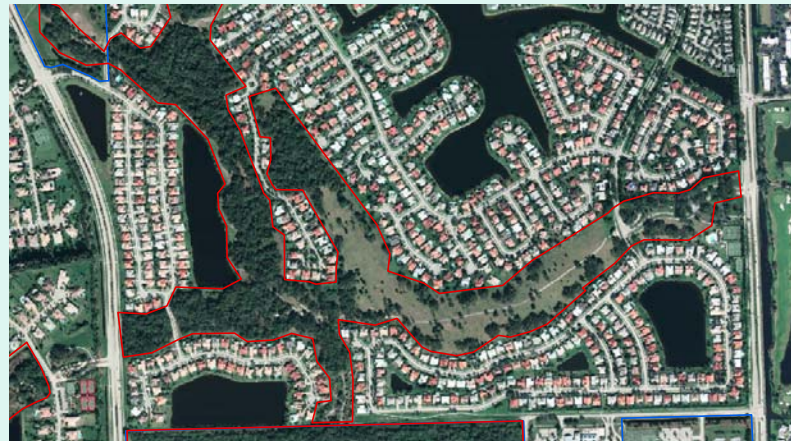


ENVIRONMENTAL SUSTAINABILITY



Inventory Lands for
Carbon Sequestration
and Storage

Tree Canopy
Coverage and
Analysis





ECONOMIC STABILITY

Southeast Florida Region intrinsically connected:

- Combined population of Broward, Miami-Dade, Palm Beach and Monroe Counties is 5.5 million people
- Combined Gross Domestic Product of more than \$2.5 billion annually
- Provide more than 37% of the statewide economic output



ECONOMIC STABILITY

Southeast Florida Region intrinsically connected:

- shared beaches, coral reefs, and Everglades resources
- shared transportation systems
- shared economic resources
- shared vulnerability to climate change impacts of sea level rise, saltwater intrusion, temperature change, rainfall variability, hurricane intensity or frequency



ECONOMIC STABILITY

Southeast Florida Regional Climate Leadership Summit held on October 23, 2009 among 300 elected leaders from 4 County region resulted in a Compact to collaborate on:

- Developing joint legislative packages on climate change policies including energy and climate security, and renewable energy portfolio standards
- Seeking joint funding based upon vulnerability
- Establishing consistent mechanisms for mapping, modeling and monitoring the impacts of climate change



FUTURE ACTIONS

- Strive to attain the Government Operations Emissions Goal
- Implement the recommendations of the Climate Change Task Force for effective mitigation and adaption
- Implement the commitments of the Climate Compact for regional collaboration
- Use existing resources and new funding sources to fully implement plans



CONCLUSIONS

- Environmental stewardship especially as it applies to climate change impacts is a priority for Broward County
- Effective mitigation and adaption requires significant planning and implementation
- Regional collaboration is important especially in tough economic times
- Broward County has learned from others and is pleased to share our experience with you



QUESTIONS?

Donald Burgess
Climate Change Task Force Liaison
Broward County
dburgess@broward.org
www.broward.org/climatechange



SUSTAINABILITY



ENERGY | ENVIRONMENT | ECONOMICS