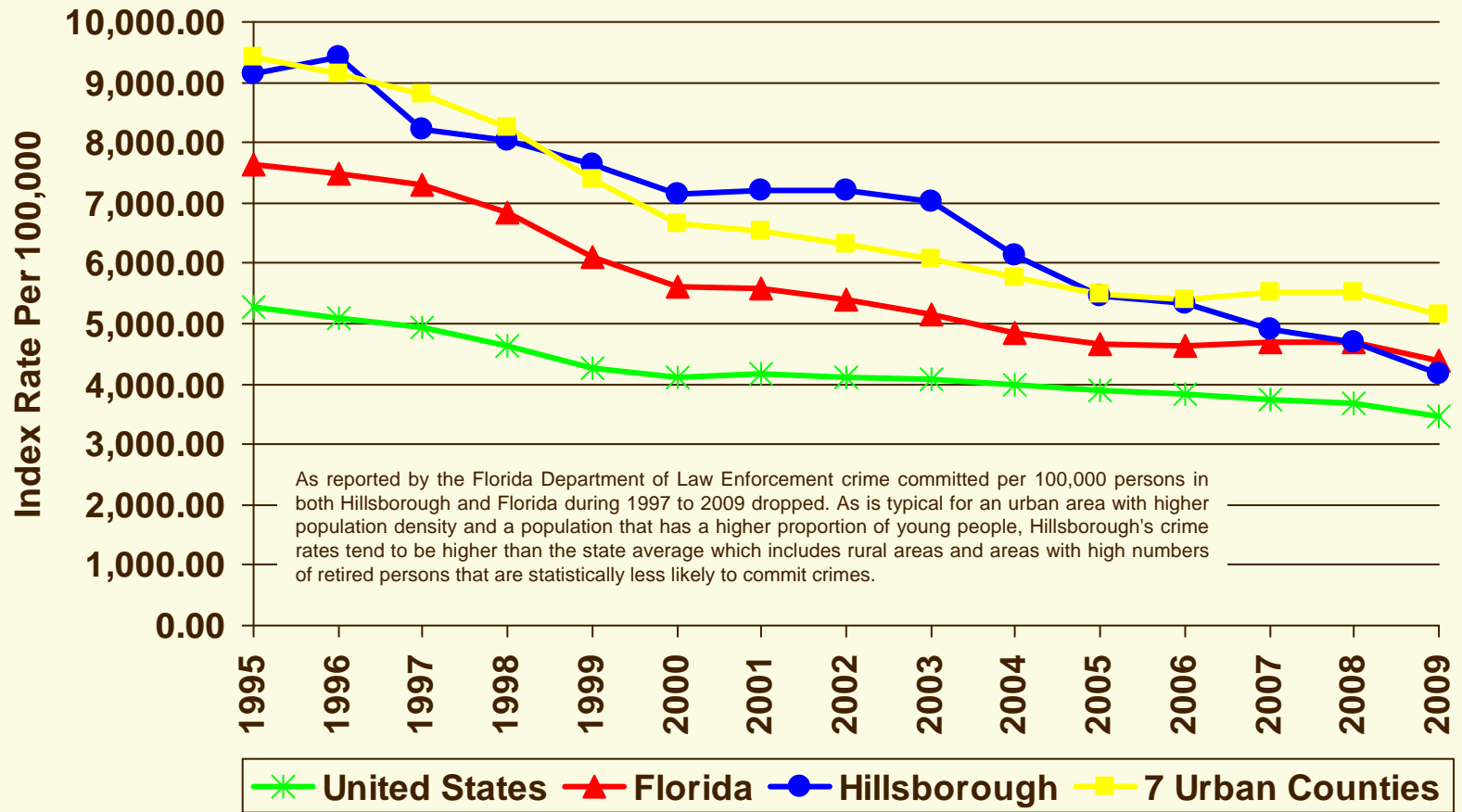
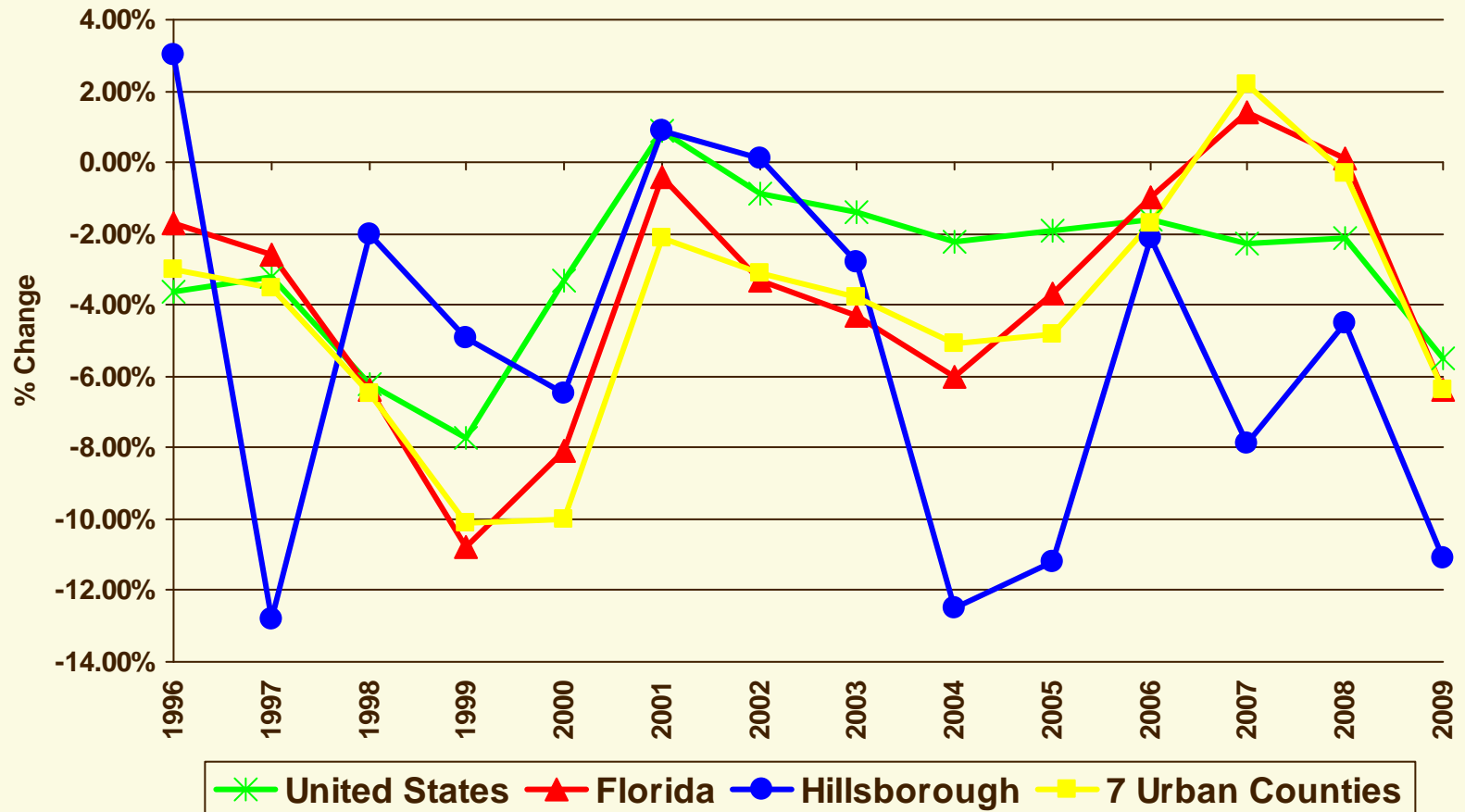


Crime Index Rate per 100,000 Persons



Crime Index Rate per 100,000 Persons

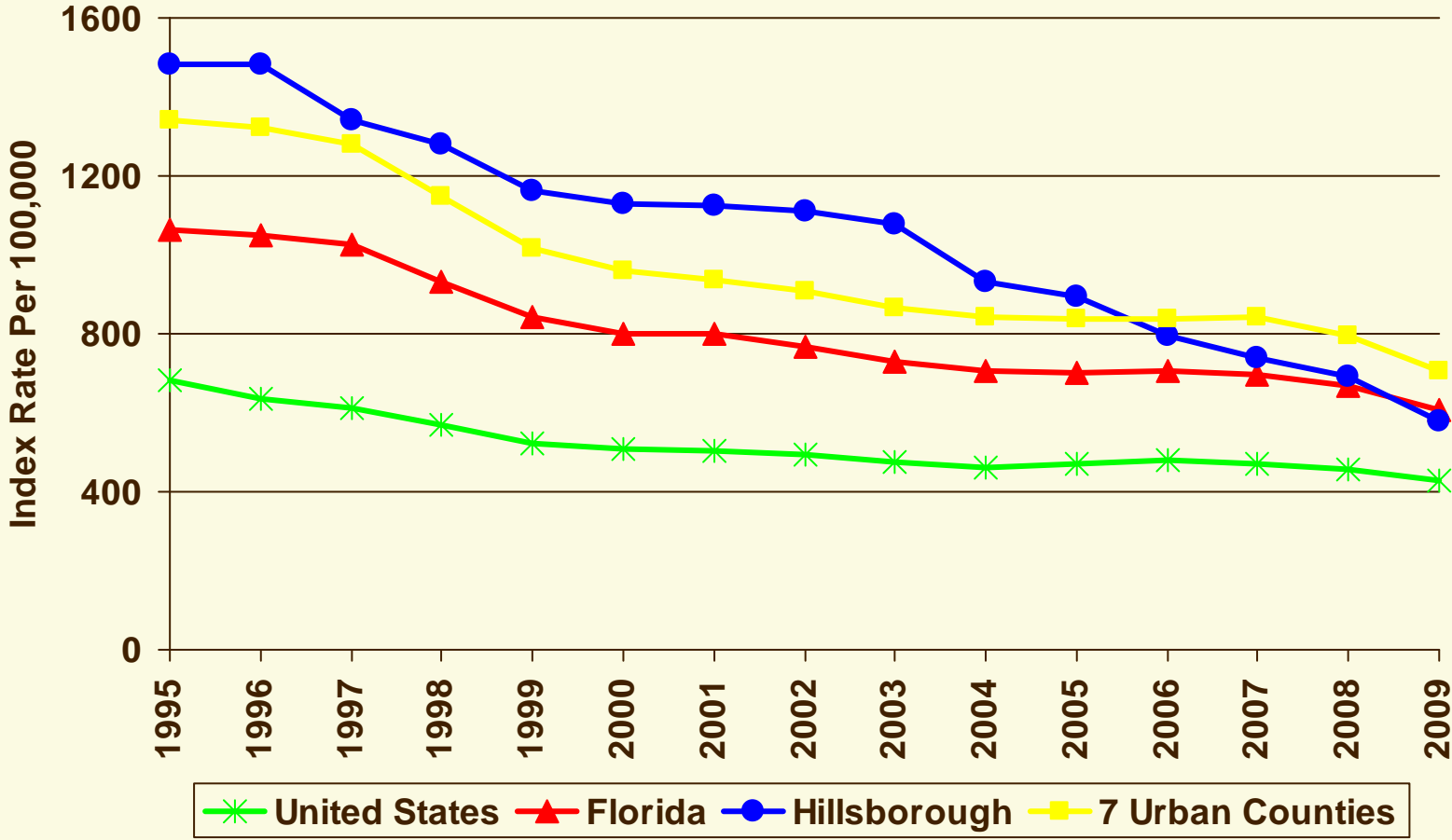
Annual Rate of Change



Sources: Florida Department of Law Enforcement, Crime in Florida, Florida uniform crime report; FBI, Uniform Crime Reports

DATA

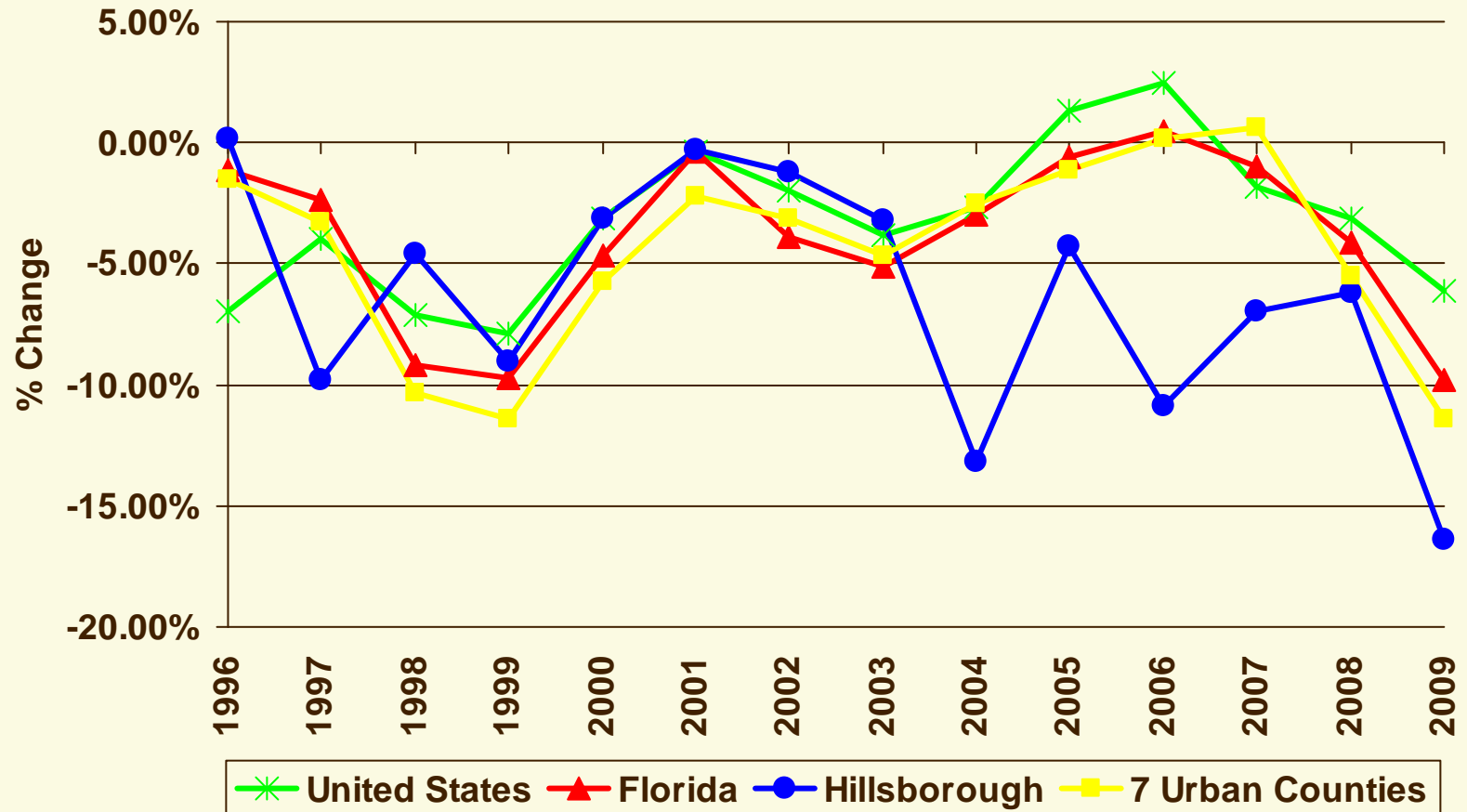
Violent Crime Rate per 100,000 Persons



Sources: Florida Department of Law Enforcement, Crime in Florida, Florida uniform crime report; FBI, Uniform Crime Reports

Violent Crime Rate per 100,000 Persons

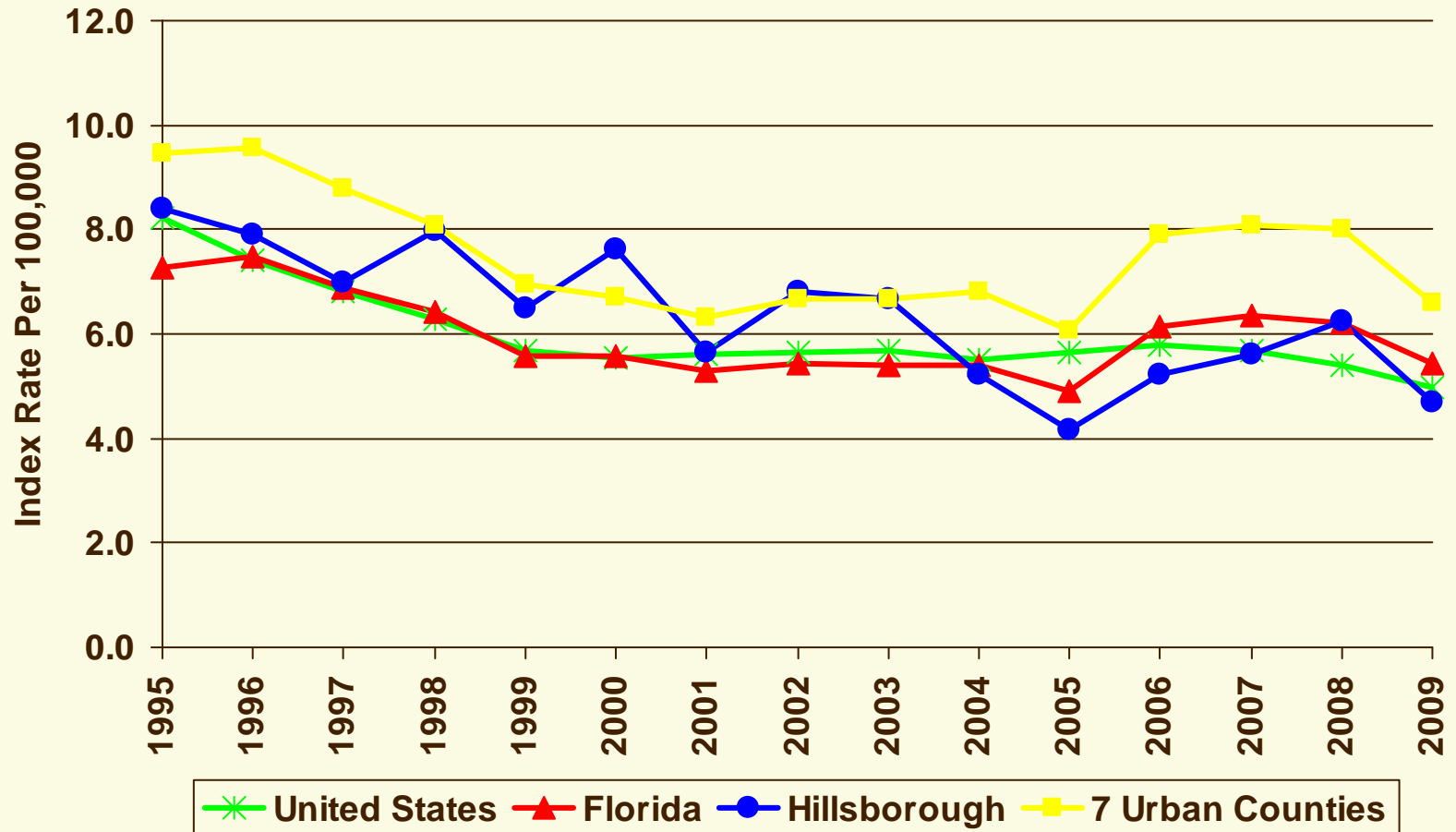
Annual Rate of Change



Sources: Florida Department of Law Enforcement, Crime in Florida, Florida uniform crime report; FBI, Uniform Crime Reports

DATA

Murder Rate per 100,000 Persons

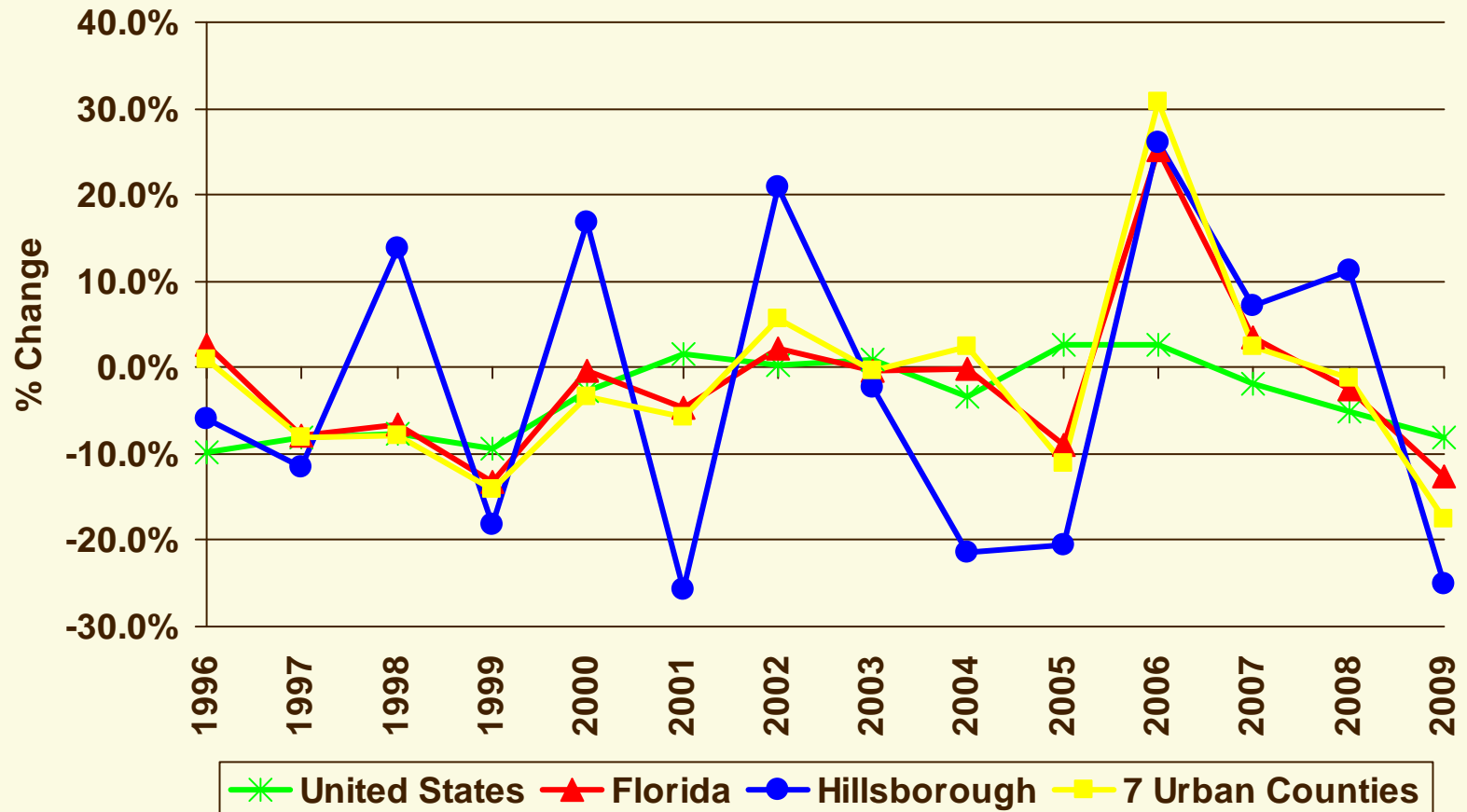


Sources: Florida Department of Law Enforcement, Crime in Florida, Florida uniform crime report; FBI, Uniform Crime Reports

DATA

Murder Rate per 100,000 Persons

Annual Rate of Change



Sources: Florida Department of Law Enforcement, Crime in Florida, Florida uniform crime report; FBI, Uniform Crime Reports

DATA

Total Index Crime for Hillsborough, 1995-2009

<u>Year</u>	<u>Total Index Crime</u>	<u>% Index Change</u>	<u>Index Rate per 100,000</u>	<u>Rate Change</u>
1995	81,684	NA	9,148.4	NA
1996	85,801	5.0%	9,419.8	3.0%
1997	76,261	-11.1%	8,211.3	-12.8%
1998	75,802	-0.6%	8,044.2	-2.0%
1999	74,017	-2.4%	7,650.2	-4.9%
2000	71,448	-3.5%	7,152.3	-6.5%
2001	74,091	3.7%	7,215.0	0.9%
2002	76,215	2.9%	7,219.9	0.1%
2003	75,785	-0.6%	7,019.8	-2.8%
2004	68,079	-10.2%	6,141.9	-12.5%
2005	61,708	-9.4%	5,453.4	-11.2%
2006	62,143	0.7%	5,336.8	-2.1%
2007	58,638	-5.6%	4,915.7	-7.9%
2008	56,357	-3.9%	4,694.3	-4.5%
2009	49,971	-11.3%	4,175.1	-11.1%

Total Index Crime for Florida, 1995-2009

<u>Year</u>	<u>Total Index Crime</u>	<u>% Index Change</u>	<u>Index Rate per 100,000</u>	<u>Rate Change</u>
1995	1,078,619	NA	7,623.1	NA
1996	1,079,623	0.1%	7,491.4	-1.7%
1997	1,073,757	-0.5%	7,298.1	-2.6%
1998	1,025,100	-4.5%	6,833.8	-6.4%
1999	934,349	-8.9%	6,098.1	-10.8%
2000	895,708	-4.1%	5,604.4	-8.1%
2001	911,292	1.7%	5,579.9	-0.4%
2002	900,155	-1.2%	5,398.4	-3.3%
2003	881,615	-2.1%	5,164.2	-4.3%
2004	850,490	-3.5%	4,855.3	-6.0%
2005	838,063	-1.5%	4,677.2	-3.7%
2006	849,926	1.4%	4,632.0	-1.0%
2007	876,981	3.2%	4,694.7	1.4%
2008	883,905	0.8%	4,699.8	0.1%
2009	824,559	-6.7%	4,397.5	-6.4%

Total Index Crime for Largest Urban Florida Counties, 1995-2009

<u>Year</u>	<u>Total Index Crime</u>	<u>% Index Change</u>	<u>Index Rate per 100,000</u>	<u>Rate Change</u>
1995	714,484	NA	9,417.0	NA
1996	704,628	-1.4%	9,132.5	-3.0%
1997	692,855	-1.7%	8,814.8	-3.5%
1998	658,084	-5.0%	8,242.4	-6.5%
1999	602,576	-8.4%	7,407.5	-10.1%
2000	573,692	-4.8%	6,668.3	-10.0%
2001	572,457	-0.2%	6,527.2	-2.1%
2002	563,999	-1.5%	6,323.1	-3.1%
2003	552,713	-2.0%	6,084.0	-3.8%
2004	534,336	-3.3%	5,775.5	-5.1%
2005	517,481	-3.2%	5,497.6	-4.8%
2006	515,994	-0.3%	5,403.4	-1.7%
2007	533,663	3.4%	5,522.6	2.2%
2008	533,614	0.0%	5,507.2	-0.3%
2009	497,022	-6.9%	5,154.8	-6.4%

Broward, Duval, Hillsborough, Miami-Dade, Orange, Palm Beach and Pinellas Counties

Total Index Crime for United States, 1995-2009

<u>Year</u>	<u>Total Index Crime</u>	<u>% Index Change</u>	<u>Index Rate per 100,000</u>	<u>Rate Change</u>
1995	13,862,727	NA	5,274.9	NA
1996	13,493,863	-2.7%	5,087.6	-3.6%
1997	13,194,571	-2.2%	4,927.3	-3.2%
1998	12,485,714	-5.4%	4,620.1	-6.2%
1999	11,634,378	-6.8%	4,266.5	-7.7%
2000	11,608,070	-0.2%	4,124.8	-3.3%
2001	11,876,669	2.3%	4,162.6	0.9%
2002	11,878,954	0.0%	4,125.0	-0.9%
2003	11,826,538	-0.4%	4,067.1	-1.4%
2004	11,679,474	-1.2%	3,977.3	-2.2%

Hillsborough Violent Crime, 1995-2009

Year	Population	Murder	Forcible Sex		Aggravated Assault	Total Violent Crime	Violent Rate per 100,000		Murder Rate per 100,000	
			Offenses	Robbery			Rate	Rate Change	Rate	Rate Change
1995	892,874	75	498	3,622	9,032	13,227	1,481.4	NA	8.40	NA
1996	910,855	72	512	3,837	9,102	13,523	1,484.6	0.2%	7.90	-5.9%
1997	928,731	65	511	3,708	8,157	12,441	1,339.6	-9.8%	7.00	-11.5%
1998	942,322	75	550	3,410	8,013	12,048	1,278.5	-4.6%	7.96	13.7%
1999	967,511	63	545	3,359	7,290	11,257	1,163.5	-9.0%	6.51	-18.2%
2000	998,948	76	577	3,099	7,511	11,263	1,127.5	-3.1%	7.61	16.8%
2001	1,026,906	58	456	3,350	7,674	11,538	1,123.6	-0.3%	5.65	-25.8%
2002	1,055,617	72	494	3,501	7,657	11,724	1,110.6	-1.2%	6.82	20.8%
2003	1,079,587	72	551	2,967	8,021	11,611	1,075.5	-3.2%	6.67	-2.2%
2004	1,108,435	58	449	2,496	7,340	10,343	933.1	-13.2%	5.23	-21.5%
2005	1,131,546	47	504	2,180	7,370	10,101	892.7	-4.3%	4.15	-20.6%
2006	1,164,425	61	365	2,464	6,369	9,259	795.2	-10.9%	5.24	26.1%
2007	1,192,861	67	324	2,670	5,761	8,822	739.6	-7.0%	5.62	7.2%
2008	1,200,541	75	864	2,295	5,090	8,324	693.4	-6.2%	6.25	11.2%
2009	1,196,892	56	581	2,045	4,254	6,936	579.5	-16.4%	4.68	-25.1%

Florida Violent Crime, 1995-2009

Year	Population	Murder	Forcible Sex		Aggravated Assault	Total Violent Crime	Violent Rate per 100,000		Murder Rate per 100,000	
			Offenses	Robbery			Rate	Rate Change	Rate	Rate Change
1995	14,149,317	1,030	6,824	42,142	100,212	150,208	1,061.6	NA	7.28	NA
1996	14,411,563	1,077	7,508	41,643	101,122	151,350	1,050.2	-1.1%	7.47	2.7%
1997	14,712,922	1,014	7,672	40,703	101,412	150,801	1,025.0	-2.4%	6.89	-7.8%
1998	15,000,475	966	7,393	36,130	95,184	139,673	931.1	-9.2%	6.44	-6.6%
1999	15,322,040	856	6,965	31,996	89,042	128,859	841.0	-9.7%	5.59	-13.2%
2000	15,982,378	890	6,952	31,392	88,807	128,041	801.1	-4.7%	5.57	-0.3%
2001	16,331,739	867	6,630	32,808	90,018	130,323	798.0	-0.4%	5.31	-4.7%
2002	16,674,608	906	6,704	32,413	87,882	127,905	767.1	-3.9%	5.43	2.3%
2003	17,071,508	924	6,724	31,512	85,076	124,236	727.7	-5.1%	5.41	-0.4%
2004	17,516,732	946	6,609	29,984	86,158	123,697	706.2	-3.0%	5.40	-0.2%
2005	17,918,227	881	6,587	30,092	88,276	125,836	702.3	-0.6%	4.92	-9.0%
2006	18,349,132	1,129	6,471	34,123	87,778	129,501	705.8	0.5%	6.15	25.1%
2007	18,860,367	1,202	6,145	38,112	86,322	131,781	698.7	-1.0%	6.37	3.6%
2008	18,807,219	1,168	10,823	36,232	77,849	126,072	670.3	-4.1%	6.21	-2.6%
2009	18,750,483	1,017	10,227	30,881	71,290	113,415	604.9	-9.8%	5.42	-12.7%

Largest Urban Florida Counties Violent Crime, 1995-2009

Year	Population	Murder	Forcible Sex			Aggravated Assault	Total Violent Crime	Violent		Murder Rate	
			Offenses	Robbery	Offenses			Rate per 100,000	Rate Change	per 100,000	Rate Change
1995	7,587,182	718	3,900	33,245	64,050	101,913	1,343.2	NA	9.46	NA	
1996	7,715,592	737	4,290	32,725	64,294	102,046	1,322.6	-1.5%	9.55	0.9%	
1997	7,860,094	691	4,374	31,264	64,214	100,543	1,279.2	-3.3%	8.79	-8.0%	
1998	7,984,143	647	4,206	27,330	59,469	91,652	1,147.9	-10.3%	8.10	-7.8%	
1999	8,134,656	566	3,817	24,061	54,254	82,698	1,016.6	-11.4%	6.96	-14.1%	
2000	8,603,217	578	3,950	23,555	54,436	82,519	959.2	-5.7%	6.72	-3.4%	
2001	8,770,304	555	3,462	24,085	54,190	82,292	938.3	-2.2%	6.33	-5.8%	
2002	8,919,698	596	3,424	23,939	53,159	81,118	909.4	-3.1%	6.68	5.6%	
2003	9,084,700	605	3,560	23,663	50,904	78,732	866.6	-4.7%	6.66	-0.3%	
2004	9,251,705	631	3,969	22,735	50,807	78,142	844.6	-2.5%	6.82	2.4%	
2005	9,412,839	570	3,392	22,493	52,195	78,650	835.6	-1.1%	6.06	-11.2%	
2006	9,549,457	756	3,327	24,947	50,934	79,964	837.4	0.2%	7.92	30.7%	
2007	9,663,292	783	3,155	28,214	49,285	81,437	842.7	0.6%	8.10	2.4%	
2008	9,689,389	776	5,886	26,302	44,164	77,128	796.0	-5.5%	8.01	-1.2%	
2009	9,642,015	637	5,219	22,032	40,113	68,001	705.3	-11.4%	6.61	-17.5%	

Broward, Duval, Hillsborough, Miami-Dade, Orange, Palm Beach and Pinellas Counties

United States Violent Crime, 1995-2009

Year	Population	Murder	Forcible Sex			Aggravated Assault	Total Violent Crime	Violent		Murder Rate	
			Offenses	Robbery	Offenses			Rate per 100,000	Rate Change	per 100,000	Rate Change
1995	262,803,276	21,606	97,470	580,509	1,099,207	1,798,792	684.5	NA	8.2	NA	
1996	265,228,572	19,645	96,252	535,594	1,037,049	1,688,540	636.6	-7.0%	7.4	-9.9%	
1997	267,783,607	18,208	96,153	498,534	1,023,201	1,636,096	611.0	-4.0%	6.8	-8.2%	
1998	270,248,003	16,974	93,144	447,186	976,583	1,533,887	567.6	-7.1%	6.3	-7.6%	
1999	272,690,813	15,522	89,411	409,371	911,740	1,426,044	523.0	-7.9%	5.7	-9.4%	
2000	281,421,906	15,586	90,178	408,016	911,706	1,425,486	506.5	-3.1%	5.5	-2.7%	
2001	285,317,559	16,037	90,863	423,557	909,023	1,439,480	504.5	-0.4%	5.6	1.5%	
2002	287,973,924	16,229	95,235	420,806	891,407	1,423,677	494.4	-2.0%	5.6	0.3%	
2003	290,788,976	16,528	93,883	414,235	859,030	1,383,676	475.8	-3.8%	5.7	0.9%	
2004	293,656,842	16,148	95,089	401,470	847,381	1,360,088	463.2	-2.7%	5.5	-3.3%	

Total Index Crime for Seven Largest Florida Urban Counties

Year	Population	Murder	Forcible Sex Offenses	Robbery	Aggravated Assault	Burglary	Larceny	Motor Vehicle Theft	Total Index Crimes	Index Rate per 100,000
1995	7,587,182	718	3,900	33,245	64,050	130,361	395,493	86,717	714,484	9,417.0
1996	7,715,592	737	4,290	32,725	64,294	131,914	391,070	79,598	704,628	9,132.5
1997	7,860,094	691	4,374	31,264	64,214	127,147	382,579	82,586	692,855	8,814.8
1998	7,984,143	647	4,206	27,330	59,469	119,189	368,748	78,495	658,084	8,242.4
1999	8,134,656	566	3,817	24,061	54,254	106,792	342,889	70,197	602,576	7,407.5
2000	8,603,217	578	3,950	23,555	54,436	100,578	324,204	66,391	573,692	6,668.3
2001	8,770,304	555	3,462	24,085	54,190	100,359	321,969	67,837	572,457	6,527.2
2002	8,919,698	596	3,424	23,939	53,159	99,127	317,650	66,104	563,999	6,323.1
2003	9,084,700	605	3,560	23,663	50,904	96,563	316,968	60,450	552,713	6,084.0
2004	9,251,705	631	3,969	22,735	50,807	94,526	304,943	56,725	534,336	5,775.5
2005	9,412,839	570	3,392	22,493	52,195	94,078	291,762	52,991	517,481	5,497.6
2006	9,549,457	756	3,327	24,947	50,934	94,174	287,640	54,216	515,994	5,403.4
2007	9,663,292	783	3,155	28,214	49,285	101,625	298,792	51,809	533,663	5,522.6
2008	9,689,389	776	5,886	26,302	44,164	105,541	306,399	44,546	533,614	5,507.2
2009	9,642,015	637	5,219	22,032	40,113	102,121	291,708	35,192	497,022	5,154.8