

Financial Summary

For the Period Ending 07/31/11

Introduction

Purpose of Report:

This report, which includes financial information as of July 31, 2011, is prepared by the Department of Business and Support Services as a monthly summary of revenues and other sources, and of expenditures and other uses, for certain funds. The primary purpose of this monthly report is to identify potential problem areas between budgeted and actual revenues and expenditures. Such areas can include projected budget shortfalls that cannot be accommodated from within the department's approved operating budget. These potential budget shortfalls may require appropriations from reserves, including the 2% reserve for attrition. The report will also identify any subfund that may not have adequate reserves to meet current service or program requirements. In general, positive areas of budgetary performance such as receipts in excess of budgeted revenues or expenditure rates that are below the percent of year lapsed for appropriations are not addressed in this report.

Funds Included in Report:

The Countywide General Fund, Unincorporated Area General Fund, Library Fund, and County Blended Component Units Fund are the primary unrestricted operating funds of Hillsborough County, the first three of which rely on ad valorem (property) taxes as their primary revenue. While these funds are the primary focus of this report, other funds encompassed in the report include the Building Fund, County Transportation Trust Fund, Solid Waste Fund, Utility System Fund, Fleet Services Fund, Self Insurance Fund, and the Indigent Health Care Fund.

Detail analyses are also included for those costs not attributable or distributed to specific County departments. These areas include Non-Departmental Allotments representing a means of recording items which are general government in nature; Nonprofit Organizations representing funding for social service organizations; and Governmental Agencies representing funding to other governmental agencies.

Schedules and Related Data:

The schedules included in this report are formatted in such a way to assist in identifying abnormal trends in both revenues and expenditures. It shows actual revenues and expenditures as a percent of budget, which when compared to the percent of year elapsed will give a general idea as to how actual year-to-date revenues and expenditures are tracking against their respective budgets. It also reflects the percentage of revenues received and expenditures paid for both FY 11 and the same period for FY 10. This presentation will show unusual trends between the two years. Revenues reflected in this report include cash receipts. Uses reflected in this report include only actual expenditures, not encumbrances.

Unaudited financial data is obtained from the FAMIS accounting system, which is maintained by the staff of the Clerk, BOCC in order to account for the financial resources of the Board of County Commissioners. Due to the timing of the report, earned interest for the current month may not be included. The County generally operates on a cash basis of accounting during the year, closing each month's financial records without accruals for outstanding revenues or expenditures. The County reports most funds at year-end on a modified accrual basis of accounting, taking into consideration outstanding transactions in accordance with generally accepted accounting principles (GAAP) for state and local government.

Revenues and Other Sources

Many revenues exhibit irregular collection patterns. For example, property tax revenue is received beginning in November. Payments before March qualify for discounts of one percent per month. Early receipt of revenue results in greater interest earnings, but those earnings are more than offset by discounts for early payment since the County's average rate of return on investments is less than one percent per month. Occasionally, two monthly receipts of State-shared revenues may occur in one month and none in the preceding month or following month. These payments may be associated with revenues in the Countywide General Fund or Unincorporated Area General Fund, or they may impact these funds through transfers received from other funds (e.g., sales taxes transferred from the Sales Tax Revenue Fund). The timing of some revenues is internally controlled, such as indirect cost reimbursements for central services paid to the General Fund by departments funded outside the General Fund.

Expenditures and Other Uses

As of July 31, ten months, or 83.3 percent, of the fiscal year has expired and 20.6, or 78.9 percent, of payrolls have been posted to the County's financial records. Expenditures reflected for the Constitutional Officers (Clerk, Sheriff, Supervisor of Elections and Property Appraiser) are the funds they draw in accordance with Florida Statutes. The Tax Collector's commission is a fee on taxes collected based on a sliding scale; a higher commission rate is applicable for the first \$50.0 million in collections.

In order to help balance significant revenue shortfalls resulting from property tax reform and the recession, the FY 11 budget includes elimination of an additional 277 Board funded positions; 257 of these positions report directly to the BOCC. Other cost reduction measures continued from FY 10 include no pay increases for employees, a continued 1.5% reduction in the County contribution for deferred compensation implemented in FY 10, and no increase in the County contribution for health insurance. These actions, along with other expenditure reduction measures included in the adopted budget, are projected to result in actual FY 11 expenditures being significantly lower than in prior years. The impact of these changes will become more apparent as the year progresses.

Economic Overview

Weak first half 2011 U.S. economic performance has been disappointing. Several events, including the earthquake/tsunami in Japan, rising energy prices, slow job growth, renewed home price declines, Eurozone debt problems, and, not least, the federal debt ceiling debate and ensuing credit downgrade by Standard and Poor's converged to cause significant drops in consumer and business confidence. Doubt regarding the resiliency of the economic recovery is high. The Bureau of Economic Analysis reports that U.S. Gross Domestic Product (GDP) growth slowed to 0.4% in the first quarter of 2011 due to bad winter weather, high gasoline prices, slow government spending, and surging imports. The second quarter posted a still disappointing 1.3% growth limited by flat consumer spending and ongoing auto production delays related to parts supply problems in Japan. July and early August data indicate that third quarter growth will be better, yet still relatively modest. The future of the recovery will be highly influenced by consumer and business confidence. Further blows to that confidence could trigger a downturn. With that in mind, the Federal Reserve has already acted aggressively by announcing it would hold interest rates very low until mid-2013. Forecasters have downgraded growth projections but still expect this to be a temporary slowdown as strong business and consumer balance sheets as well as moderating energy and food prices should support improving labor markets, consumer spending and business investment. Economy.com now forecasts 1.7% GDP growth for 2011 and 3.3% growth for 2012.

Jobs remain a primary concern. While job losses have abated, hiring has remained weak. Early 2011 improvement in job growth was not matched in the second quarter. The Challenger Report revealed job cuts during the first four months of 2011 fell 24% below the same period a year ago. Job losses accelerated in May and June but second quarter losses were still slightly below year ago results. Governments and nonprofits accounted for nearly 25% of all losses. Similarly, the Bureau of Labor Statistics (BLS) reported increased mass layoffs this summer compared to March but little changed from a year ago. BLS further reported net job gains of only 53,000 and 46,000 for May and June respectively. This is well under the average monthly gain of 178,500 for January through April. Weakened job growth contributed to poor confidence in the path of the economy.

July jobs data, however, show an improved gain of 117,000. Initial unemployment compensation claims, which also climbed early in the second quarter, are again trending downward. Although positive, these are still relatively weak improvements with businesses still reluctant to hire in the uncertain economic conditions.

While businesses have been strongly investing in equipment and software and profits are high due to cost cutting, they have been slow to substantially increase the rate of hiring. More positively, measures of job openings have been more upbeat in mid-2011 suggesting an improvement in hiring is likely. Slowing productivity growth coupled with still expanding manufacturing and service sector output also suggests future job gains.

As in the nation, both Florida and the Tampa Metropolitan Area posted modest annual job gains in 2011, albeit on slower, bumpier paths. As job losses have abated initial unemployment compensation claims in both Florida and Hillsborough County fell 11.5% during 2010. July 2011 Hillsborough initial claims were 17.3% below year-ago levels. January 2011 was the first month since June 2007 that Florida and Metro Tampa jobs

exceeded year-ago levels. During the first quarter Florida's monthly job gains averaged 38,600 (not seasonally adjusted) while Metro Tampa's job gains averaged 2,700. Second quarter Florida figures were not as encouraging with monthly gains averaging 29,400, Metro Tampa average monthly job gains improved to 5,000 in the second quarter. July gains improved as in the nation. Florida gained 51,500 jobs and Metro Tampa gained 10,500 jobs. The University of Central Florida forecasts modest job gains of 1.2% for Tampa Bay in 2011. More robust job growth of 1.8% is expected for 2012.

While unemployment rates are below recession highs, slow job growth has not been fast enough to significantly lower them. Hillsborough County's June 2011 unemployment rate (not seasonally adjusted) is 11.0%, compared to 12.2% a year ago and 10.8% two years ago. U.S. unemployment also remains high at 9.3% (not seasonally adjusted) for June 2011, under the previous June's rate of 9.7% and the peak rate of 10.6% for January 2010. Florida's June rate is 11.0% (not seasonally adjusted) compared to 11.9% a year ago.

U.S. retail sales have also improved from the low levels of 2009 as job losses abate. Year-ago U.S. retail sales growth has been positive over the last 21 months. Spring growth rates, below 8.0%, were more moderate than February's 9.1% gain likely reflecting higher fuel prices, poor job growth, and the negative effect international events had on confidence. Consumers, however, have still been spending with July 2011 sales standing 8.5% above a year ago. Retail sales are still growing, driven by a release of pent-up demand and modest job gains. Falling housing prices, a resumption of fuel price increases, and consumer doubts regarding the recovery's resilience are threats to future sales improvements.

Florida and Hillsborough consumer spending is reflecting the upward national trend. Annual 2010 taxable sales were up 0.5% in Hillsborough and 1.7% in Florida. These are the first annual gains since 2006. April 2010 monthly data show Hillsborough County's taxable sales have rose on a year ago basis for the first time since February 2007. Hillsborough County taxable sales in June 2011 were up 4.5% compared to June 2010. Florida taxable sales rose 3.7%. These are the slowest gains during 2011 and likely reflect the spring and summer declines in confidence. Improving job market conditions in late 2011 and 2012 should support accelerated gains in taxable sales.

While job markets, business investment, and consumer spending are beginning to improve, national and local housing markets still lag. Sales are still at low levels historically and home prices are weak. High unemployment, tight credit, and falling home prices are persistent impediments to stronger housing demand. Greater Tampa Association of Realtors (GTAR) data show the expected affect of the April 2010 expiration of the federal homebuyers tax credit. After twenty-two consecutive months of annual gains in home sales, July through November existing home sales in Hillsborough declined compared to a year ago. October and November sales both fell more than 17% compared to a year ago when the original first-time buyers tax credit was in effect. Sales did, however, exceed November 2008 levels. The tax credits moved national sales forward as well. National November existing home sales were down 27.9% compared to a year ago.

December through July housing sales data, however, suggest the aftereffects of the tax credit have run their course. GTAR reports July 2011 existing home sales rose 20.2% over the previous July. Hillsborough unsold inventory has declined to 5.5 months from November's 11.6 months but still remains above 10,000 units. Average days on market also remains high at 107 days. National existing home sales declined 8.8% in June while supply is at 9.1 months.

Measures of home prices indicate continuing, but perhaps moderating declines. The National Association of Realtors (NAR) reported that second quarter 2011 home prices declined 2.8% nationally and 8.4% for Metro Tampa on an annual basis. NAR further reported, however, price rises compared to the first quarter. The closely watched national 20-city S&P/Case-Shiller home price index fell 4.5% in May 2011 compared to a year ago. The Metro Tampa index fell 9.5%. On a monthly basis the 20-city index rose 0.6% in April and 1.0% in May. Metro Tampa price declines slowed to 0.6% in those months. (Each measure of home price uses differing methodologies.) It is, nevertheless, too early to conclude price declines are over.

National and Hillsborough County foreclosure activity has declined since late 2010 due to lender moratoria related to “robosigning” problems. RealtyTrac reports July national foreclosure activity fell 35% from a year ago, a 44 month low. Hillsborough’s Clerk of the Circuit Court reports county foreclosures fell 46% in June compared to a year ago, but has increased since early 2011. Once the foreclosure moratoria expire foreclosures are likely to resume and renew downward pressure on prices in 2011. Job growth will be a boost to housing but housing’s recovery will not likely gain traction until 2012.

As various indicators point to renewed growth following the spring/summer 2011 slowdown, Economy.com now expects about 1.7% GDP growth for the 2011 and 3.3% growth for 2012. The Federal Reserve has also indicated its willingness to support growth by keeping interest rates low well into 2013. Economy.com expects rising job growth to push unemployment rates down in 2012 which will help support housing and consumer markets. Hillsborough County economic growth should find a sounder footing in 2012 as well. Continued weakness in housing markets, high energy prices and the European debt crisis are downside risks to these forecasts.

County Overview

Through July, with the anticipated exception of ad valorem tax revenues, traffic court surcharge revenues, and interest income, actual revenues are generally higher than at this time last year. Sales taxes, tourist development taxes, state revenue sharing, building permitting fees, stormwater fees and communications services tax revenues are all higher than last year, while fuel tax revenues remain relatively flat with FY 10. Note that there is a growing downside risk associated with fuel tax revenues resulting from significantly higher fuel prices experienced since January. Traffic court surcharge revenues are 12.4 percent lower than last year.

Although the County’s overall FY 11 budgeted revenues reflect a significant decrease from FY 10 levels, these were anticipated in preparation of the FY 11 budget. Business and Support Services tracks actual receipts to identify negative trends and bring recommendations for necessary corrective action to the Board for consideration. Major ad valorem and non-ad valorem revenues are further discussed below in the Details by Fund section.

As expected, actual non-delinquent ad valorem tax revenues through July are lower than at this time last year, primarily reflecting the continued impact of mandated property tax reforms and lower property values. Actual FY 11 year-to-date

countywide ad valorem general fund collections through July are \$355.5 million or \$45.3 million (11.3 percent) behind FY 10 collections through July, and \$186.2 million, or \$18.3 million (11.2 percent) behind FY 10 collections in the unincorporated area general fund.

Reflecting aggressive Federal Reserve action to reduce interest rates and shore up stalled credit markets, low interest rates continue to negatively impact interest earned on County investments. Based on information provided by the Clerk of the Circuit Court, the month of July's effective rate of return on the County's pooled investments was 57 basis points, or 0.57 percent. The FY 11 year-to-date effective rate of return through the end of July was 81 basis points, or 0.81 percent. Growth in the rate of return is unlikely to increase significantly in FY 11; and as discussed in the economic overview section, the Federal Reserve has committed to keeping rates low until at least 2013. This low yield, about half of what was predicted when the FY 11 budget was prepared, coupled with lower average cash balances on which interest is earned, is expected to result in FY 11 interest revenues well below FY 10 levels. Countywide and Unincorporated Area general fund interest is discussed in the appropriate section below.

We will continue to monitor state revenue forecasts and actual receipts and will communicate significant changes to the BOCC.

Details by Fund

Countywide General Fund:

As of July, revenues were at 92.9 percent of budget as compared to 93.7 percent last year. Actual collections are 6.1 percent behind what they were through the same period last year, primarily due to lower ad valorem and interest revenues. Actual FY 11 year-to-date countywide general fund ad valorem tax collections through July are \$355.5 million, or 11.3 percent, behind FY 10 collections through July. Expenditures and other uses were at 86.4 percent of budget as compared to 86.0 percent last year. FY 11 year-to-date interest (excluding unrecognized gain or loss) was \$1.74 million, reflecting an annualized effective rate of return of 81 basis points, or 0.81 percent as discussed above. It is anticipated that the monthly and fiscal year-to-date yields, as reflected in the effective rate of return, will remain at the current low level into 2013. Although a lower level of interest was factored into the adopted FY 11 budget, realized earnings lag the budgeted rate; FY 11 interest revenues through July were only at 37.5 percent of budget. It is projected that interest revenue will fall short of budget by \$2.6 million. This shortfall is not anticipated to cause any issues as other countywide revenues are projected to exceed budget. Revenues will continue to be closely monitored.

Unincorporated Area General Fund:

As of July, revenues were at 90.9 percent of budget as compared to 89.2 percent last year. Actual collections are 1.0 percent behind what they were through the

same period last year, primarily due to lower ad valorem tax revenues. Actual FY 11 unincorporated area ad valorem tax collections through July were \$165.7 million, or 10.7 percent, behind FY 10 collections. Expenditures and other uses were at 83.6 percent of budget as compared to 81.7 percent last year. FY 11 year-to-date interest (excluding unrecognized gain or loss) was \$1.14 million, reflecting an annualized effective rate of return of 81 basis points, or 0.81 percent. It is anticipated that the monthly and fiscal year-to-date yields, as reflected in the effective rate of return, will remain at the current low level into 2013. Although the low level of interest was factored into the adopted FY 11 budget, FY 11 interest revenues through February were only at 36.6 percent of budget. This shortfall is not anticipated to cause any issues as other unincorporated area revenues are projected to exceed budget. Revenues will continue to be closely monitored.

- **Parks, Recreation and Conservation** – Revenues are projected to fall approximately \$1 million short of budget. The primary shortfall is due to reduced collections in Afterschool Program fees. Based on July projections from the Parks Recreation and Conservation Department, FY 11 expenditures are estimated to be under budget by \$3.9 million which will more than offset the anticipated revenue shortfall.

Special Revenue Funds:

- **Building Services Fund** - As of July, Building Fund revenues were at 90.4 percent of budget as compared to 94.6 percent last year. Expenditures and other uses were at 77.9 percent of budget as compared to 75.4 percent last year. Interest year-to-date exclusive of unrealized gain or loss was \$60,048, or 63.1 percent of budget.

Major Revenues:

For special revenues, there is typically a one month delay between when the State collects the tax and when it is distributed to local jurisdictions. For example, the monthly report as of July will reflect payments to the County for taxes received by the State through the end of May. FY 11 revenue estimates are calculated including all revenues received as of the narrative date, even if the payment was received from the State subsequent to the report as of date. The graphs at the end of this section illustrate the historical collection pattern of each revenue source.

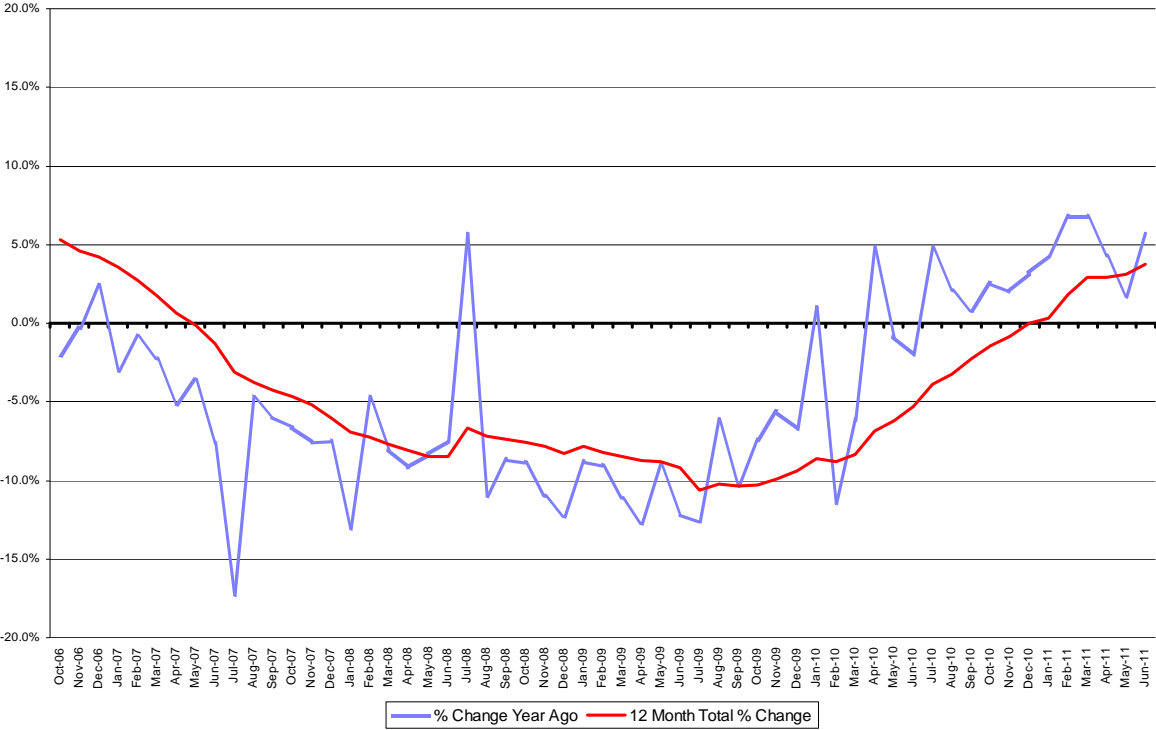
- **Half Cent Sales Tax** - As of July, actual Half Cent Sales Tax revenue for FY 11 was \$57.5 million, or 75.0 percent of budget, as compared with \$55.2 million, or 74.5 percent of budget, collected through the same time last year. Actual FY 11 collections through July are \$2.3 million, or 4.1 percent higher than actual FY 10 collections through the same period last year.
- **Community Investment Tax (CIT)** - As of July, actual CIT revenue for FY 11 was \$67.3 million, or 73.0 percent of budget, as compared with \$64.8 million, or 73.4 percent of budget, collected through the same time last year. Actual FY 11

collections through July are \$2.5 million, or 3.9 percent ahead of actual FY 10 collections through the same period last year.

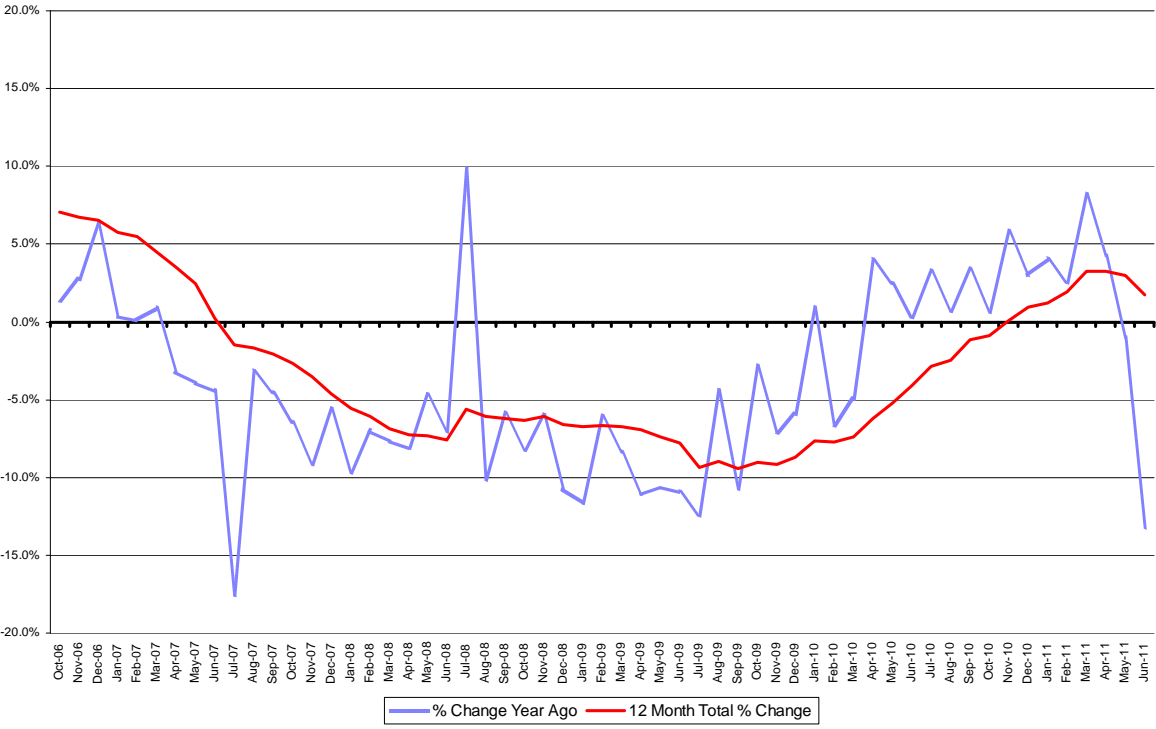
Note that the pattern and amount of Indigent Health Care Surtax revenues is virtually identical to that of CIT revenues, and is not discussed separately in this report.

- **Tourist Development Tax** - As of July, actual Tourist Development Tax (TDT) revenue for FY 11 was \$13.2 million, or 66.0 percent of budget, as compared with \$12.3 million, or 61.5 percent of budget, collected through the same time last year. Actual FY 11 collections through July are \$886 thousand, or 7.2 percent ahead of actual FY 10 collections through the same period last year.
- **State Revenue Sharing** - As of July, actual State Revenue Sharing revenue for FY 11 was \$20.4 million, or 86.2 percent of budget, as compared with \$19.8 million, or 87.8 percent of budget, collected through the same time last year. Actual FY 11 collections through July are \$616 thousand, or 3.1 percent ahead of actual FY 10 collections through the same period last year.
- **Communications Services Tax (CST)** - As of July, actual CST revenue for FY 11 was \$19.6 million, or 80.5 percent of budget, as compared with \$18.6 million, or 68.0 percent of budget, collected through the same time last year. Actual FY 11 collections through July are \$972 thousand, or 5.2 percent ahead of actual FY 10 collections through the same period last year.
- Fire Rescue – negotiations with employees covered by IAFF are ongoing. At this time, specific changes in compensation or benefits to be negotiated are unknown.
- **Gas Taxes** - As of July, actual revenue for all gas taxes (Constitutional Gas Tax, Six Cent Local Option Gas Tax, Voted Gas (Ninth Cent) Gas Tax, and County Fuel Tax) for FY 11 was \$35.2 million, or 72.5 percent of budget, as compared with \$35.2 million, or 76.5 percent of budget, collected through the same time last year. Actual FY 11 collections through July are \$43 thousand, or 0.1 percent behind of actual FY 10 collections through the same period last year.

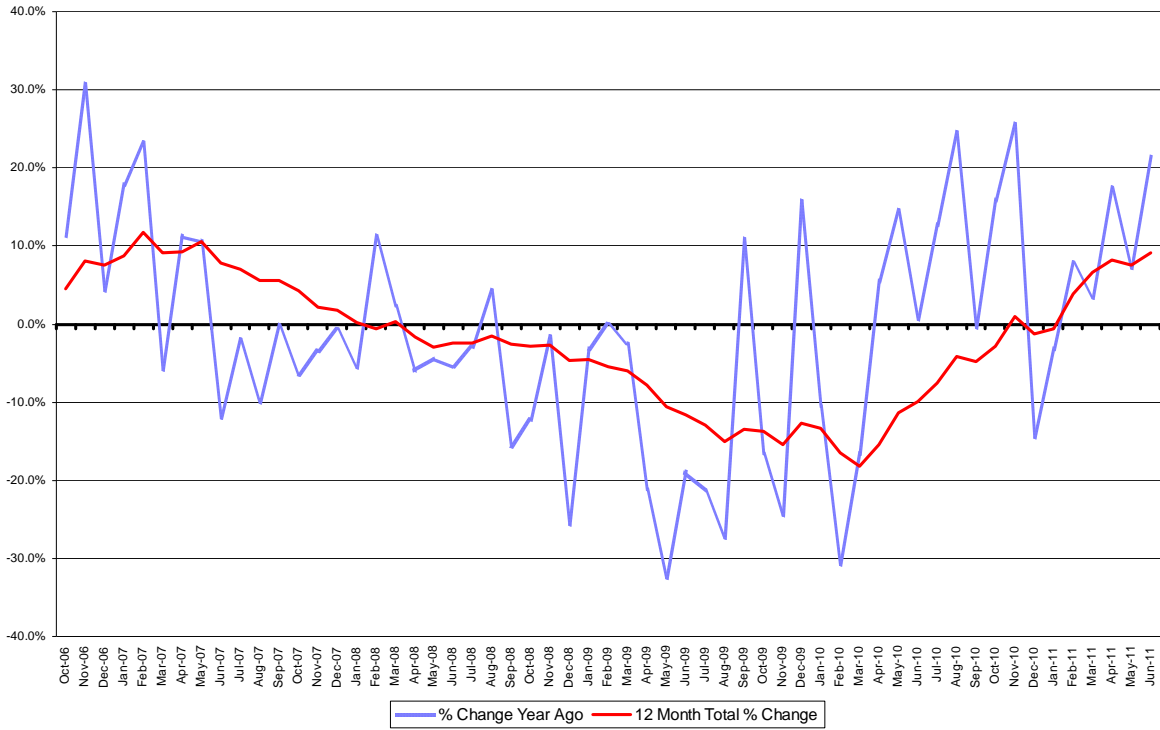
Half Cent Sales Tax



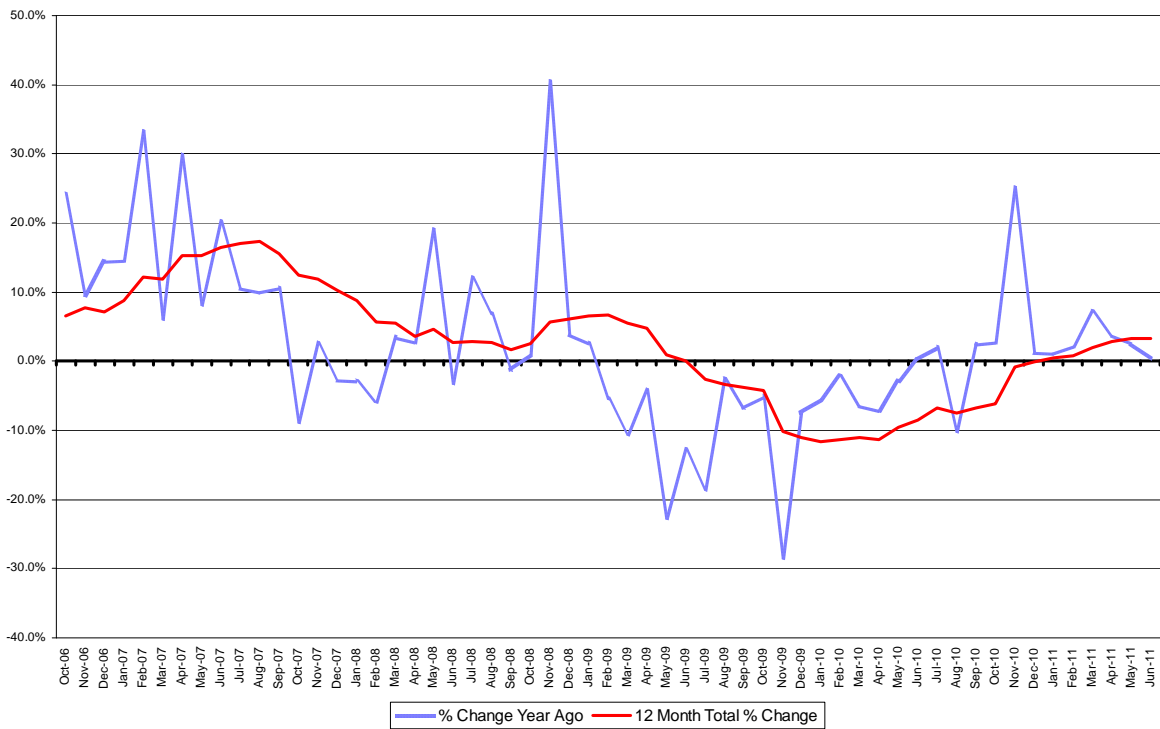
CIT



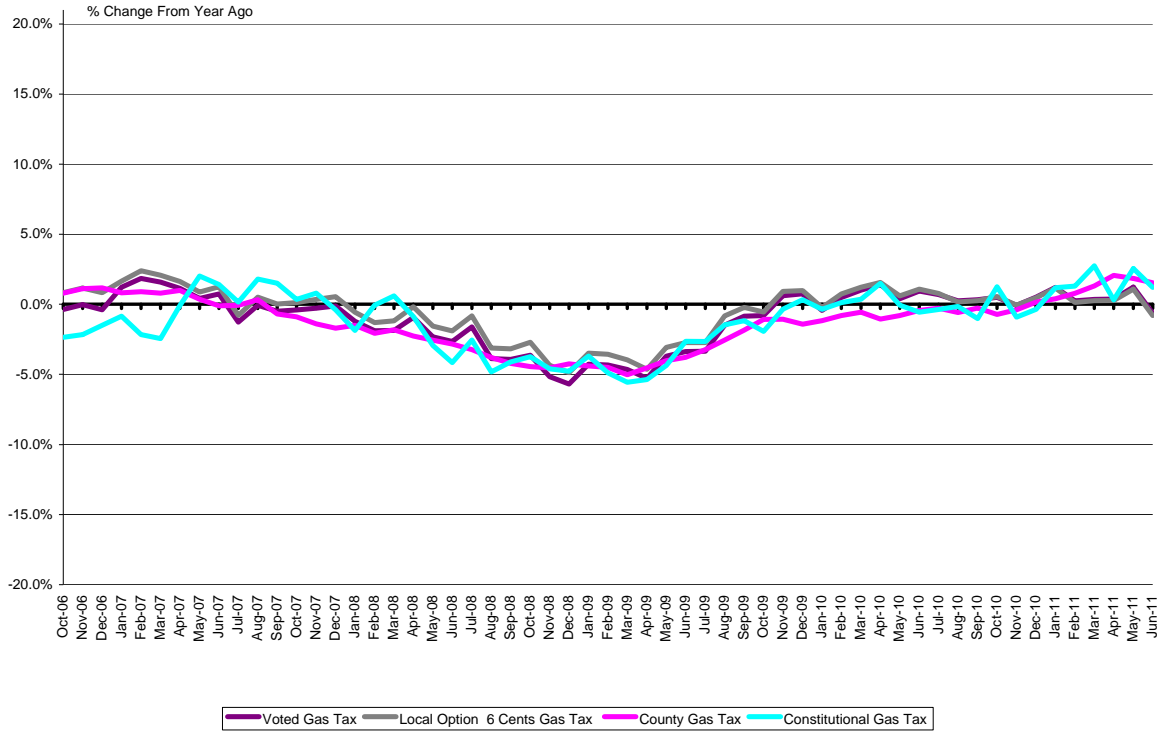
Tourist Development Tax



Communications Services Tax



Gas Taxes



Countywide General Fund
Summary of Financial Activity for Ten Month Period Ending July 31
Comparative Activity for FY 10 and FY 11

	FY 10			FY 11		
	Revised Budget	Y-T-D Actual	% of Budget	Revised Budget	Y-T-D Actual	% of Budget
<i>Revenues</i>						
Taxes	\$422,853,190	\$400,869,371	94.8%	\$375,398,073	\$355,508,075	94.7%
Licenses and Permits	640,248	171,537	26.8%	545,073	155,528	28.5%
Intergovernmental Revenue	5,421,425	4,004,571	73.9%	5,538,652	3,904,030	70.5%
Charges for Services	59,941,574	55,889,421	93.2%	59,188,759	55,490,504	93.8%
Fines and Forfeitures	75,508	101,770	134.8%	81,892	32,999	40.3%
Interest	6,960,606	2,949,336	42.4%	4,657,837	1,744,465	37.5%
Change in Fair Market Value	0	621,031	NA	0	487,170	NA
Miscellaneous Revenue	3,880,789	3,810,772	98.2%	4,289,512	5,586,751	130.2%
Interfund Transfers	20,046,210	17,352,489	86.6%	40,595,016	33,240,052	81.9%
Non-Revenue Receipts	23,220,000	(855)	(0.0%)	23,420,000	0	0.0%
Less: 5% Required by Law	(24,749,462)	0	0.0%	(22,600,296)	0	0.0%
Total Revenues	\$518,290,088	\$485,769,443	93.7%	\$491,114,518	\$456,149,574	92.9%
<i>Expenditures</i>						
Personal Services	\$95,501,286	\$75,133,323	78.7%	\$90,622,012	\$70,588,869	77.9%
Operating Expenses	46,464,658	29,602,658	63.7%	40,905,941	27,854,072	68.1%
Equipment	1,134,655	599,047	52.8%	914,803	554,483	60.6%
Grants In Aid	28,696,952	24,934,884	86.9%	26,588,726	19,628,216	73.8%
Transfers to Elected Officials	318,847,767	290,864,395	91.2%	319,242,331	292,440,822	91.6%
Interfund Transfers	42,436,048	36,560,046	86.2%	32,328,798	30,320,114	93.8%
Refunds	450,000	1,323,172	294.0%	450,000	205,622	45.7%
Total Expenditures	\$533,531,366	\$459,017,525	86.0%	\$511,052,611	\$441,592,198	86.4%
Net Revenue Over Expenditures	(\$15,241,278)	\$26,751,918		(\$19,938,093)	\$14,557,376	
Beginning Fund Balance	107,996,132	114,054,196		112,585,000	115,765,295	
Ending Fund Balance/Reserves	\$92,754,854	\$140,806,114		\$92,646,907	\$130,322,671	
<i>Reserves Detail</i>						
Reserve for Contingency	\$36,384,366			\$37,644,163		
Restricted Reserves	56,370,488			55,002,744		
Total Reserves	\$92,754,854			\$92,646,907		

Countywide General Fund
Summary of Departmental Activity for Ten Month Period Ending July 31
Comparative Activity for FY 10 and FY 11

	FY 10			FY 11		
	Revised Budget	Y-T-D Actual	% of Budget	Revised Budget	Y-T-D Actual	% of Budget
Department:						
Board of County Commissioners	\$2,212,545	\$1,704,843	77.1%	\$2,270,571	\$1,718,684	75.7%
County Attorney	8,349,548	6,566,583	78.6%	8,383,972	6,747,553	80.5%
Internal Performance Auditor	388,271	259,518	66.8%	389,270	14,186	3.6%
County Administrator:						
Administrative Svcs Plan/Infrastructure	0	0	NA	745,147	610,325	81.9%
Aging Services	9,385,489	5,979,622	63.7%	0	0	NA
Animal Services	7,200,707	5,591,689	77.7%	6,977,194	5,265,734	75.5%
Business and Support Services	0	0	NA	5,846,787	4,507,704	77.1%
Children's Services	10,038,980	6,962,944	69.4%	0	0	NA
Client & Liaison Services	864,017	535,077	61.9%	637,351	485,671	76.2%
Communications Department	2,124,055	1,586,986	74.7%	2,165,187	1,583,108	73.1%
Consumer Protection	561,555	490,122	87.3%	665,286	516,058	77.6%
County Administrator	2,467,131	2,110,328	85.5%	2,458,396	1,718,409	69.9%
Debt Management	686,398	523,494	76.3%	0	0	NA
Economic Development	1,302,456	939,752	72.2%	1,485,252	1,165,416	78.5%
Emergency Dispatch Center	173,141	146,453	84.6%	215,825	156,853	72.7%
Emergency Management	783,840	568,070	72.5%	806,635	708,326	87.8%
Equal Opportunity Administrator	55,552	44,549	80.2%	58,100	45,554	78.4%
Extension Services	1,447,430	1,056,890	73.0%	1,381,622	982,945	71.1%
Family and Aging Services	0	0	NA	32,538,521	23,232,183	71.4%
Health & Social Services	16,322,564	12,634,078	77.4%	0	0	NA
HIPAA Compliance Officer	162,246	64,954	40.0%	163,428	57,176	35.0%
Human Resources	2,033,970	1,376,190	67.7%	0	0	NA
Information & Technology Svcs.	13,550,336	10,070,126	74.3%	13,102,316	10,548,099	80.5%
Management & Budget	1,990,575	1,435,476	72.1%	0	0	NA
Medical Examiner	4,675,363	3,517,113	75.2%	4,522,200	3,487,786	77.1%
Parks, Recreation & Conservation	15,423,215	11,059,922	71.7%	13,860,345	10,535,657	76.0%
Public Works	2,327,249	1,869,840	80.3%	2,316,711	1,848,891	79.8%
Procurement Services	2,149,835	1,598,667	74.4%	0	0	NA
Real Estate	18,999,157	13,509,871	71.1%	17,692,359	12,811,142	72.4%
Security Services Agency	1,448,447	1,406,929	97.1%	0	0	NA
Elected Officials:						
Clerk of the Circuit Court	17,910,217	16,433,136	91.8%	18,183,278	16,668,005	91.7%
Property Appraiser	9,844,859	9,491,677	96.4%	8,929,859	8,865,048	99.3%
Public Defender	124,469	74,148	59.6%	124,702	98,121	78.7%
Sheriff's Office	259,997,721	237,921,505	91.5%	263,114,264	241,188,079	91.7%
State Attorney (Part I)	479,660	191,305	39.9%	380,262	144,199	37.9%
State Attorney (Victim Assistance)	2,415,596	1,839,250	76.1%	2,124,902	1,591,721	74.9%
Supervisor of Elections	8,704,293	7,573,369	87.0%	9,379,439	8,102,272	86.4%
Tax Collector	20,865,424	18,688,247	89.6%	18,384,480	16,717,368	90.9%
Value Adjustment Board	752,751	690,018	91.7%	769,099	705,010	91.7%
Judicial Branch (Admin. Office)	2,512,953	1,681,635	66.9%	2,572,164	1,444,218	56.1%
Guardian Ad Litem	228,642	182,685	79.9%	235,490	161,283	68.5%
Boards, Commissions, & Agencies:						
Charter Review Board	9,500	0	0.0%	0	0	NA
Environmental Protection Commission	8,531,063	6,751,572	79.1%	8,018,551	6,257,817	78.0%
Legislative Delegation	109,516	99,611	91.0%	0	0	NA
Soil & Water Conservation Board	231,992	180,691	77.9%	238,032	97,043	40.8%
Non-Departmental Allotments	8,891,609	5,605,183	63.0%	7,689,799	5,022,633	65.3%
Governmental Agencies	15,615,057	15,338,848	98.2%	13,325,422	10,553,536	79.2%
Not-for-Profits	6,295,924	4,781,318	75.9%	6,121,595	4,702,644	76.8%
Interfund Transfers	42,436,048	36,560,046	86.2%	32,328,798	30,320,114	93.8%
Reserves & Refunds	93,204,854	1,323,172	1.4%	93,096,907	205,622	0.2%
Total	\$626,286,220	\$459,017,502	73.3%	\$603,699,518	\$441,592,193	73.1%

Unincorporated Area General Fund
Summary of Financial Activity for Ten Month Period Ending July 31
Comparative Activity for FY 10 and FY 11

	FY 10			FY 11		
	Revised Budget	Y-T-D Actual	% of Budget	Revised Budget	Y-T-D Actual	% of Budget
<u>Revenues</u>						
Taxes	\$222,537,175	\$204,526,258	91.9%	\$198,953,567	\$186,171,638	93.6%
Licenses & Permits	46,480	55,983	120.4%	44,692	46,782	104.7%
Intergovernmental Revenue	12,479,185	9,278,309	74.4%	13,314,521	9,276,776	69.7%
Charges for Services	21,448,879	15,915,713	74.2%	20,240,519	15,928,225	78.7%
Fines and Forfeitures	2,970,842	2,827,949	95.2%	3,738,286	2,643,188	70.7%
Interest	4,577,171	1,949,741	42.6%	3,105,383	1,136,965	36.6%
Change in Fair Market Value	0	379,218	NA	0	254,673	NA
Miscellaneous Revenue	972,817	546,383	56.2%	557,006	793,921	142.5%
Interfund Transfers	53,512,462	44,487,451	83.1%	71,001,423	60,822,420	85.7%
Non-Revenue Receipts	8,375,987	(1,075)	(0.0%)	5,935,000	0	0.0%
Less: 5% Required by Law	(13,168,448)	0	0.0%	(12,141,479)	0	0.0%
Total Revenues	<u>\$313,752,550</u>	<u>\$279,965,930</u>	<u>89.2%</u>	<u>\$304,748,918</u>	<u>\$277,074,588</u>	<u>90.9%</u>
<u>Expenditures</u>						
Personal Services	\$130,747,439	\$102,177,366	78.1%	\$129,943,653	\$99,341,516	76.4%
Operating Expenses	52,575,116	39,384,290	74.9%	46,751,155	36,529,815	78.1%
Equipment	1,216,521	524,855	43.1%	142,256	74,432	52.3%
Grants In Aid	2,988,484	118,760	4.0%	1,374,225	677,076	49.3%
Transfers to Elected Officials	112,514,327	102,997,144	91.5%	111,244,982	101,962,816	91.7%
Interfund Transfers	22,186,477	18,034,243	81.3%	22,309,920	22,207,430	99.5%
Refunds	225,000	237,905	105.7%	225,000	12,120	5.4%
Total Expenditures	<u>\$322,453,364</u>	<u>\$263,474,563</u>	<u>81.7%</u>	<u>\$311,991,191</u>	<u>\$260,805,205</u>	<u>83.6%</u>
Net Revenue Over Expenditures	<u>(\$8,700,814)</u>	<u>\$16,491,367</u>		<u>(\$7,242,273)</u>	<u>\$16,269,383</u>	
Beginning Fund Balance	<u>94,474,379</u>	<u>92,036,851</u>		<u>94,474,000</u>	<u>101,296,076</u>	
Ending Fund Balance/Reserves	<u>\$85,773,565</u>	<u>\$108,528,218</u>		<u>\$87,231,727</u>	<u>\$117,565,459</u>	
<u>Reserves Detail</u>						
Reserve for Contingency	\$35,038,035			\$35,561,560		
Restricted Reserves	50,735,530			51,670,167		
Total Reserves	<u>\$85,773,565</u>			<u>\$87,231,727</u>		

Unincorporated Area General Fund
Summary of Departmental Activity for Ten Month Period Ending July 31
Comparative Activity for FY 10 and FY 11

	FY 10			FY 11		
	Revised Budget	Y-T-D Actual	% of Budget	Revised Budget	Y-T-D Actual	% of Budget
Department:						
County Administrator:						
Administrative Svcs - Planning/Infrastructure	0	0	NA	1,644,808	1,418,200	86.2%
Affordable Housing Office	1,189,585	704,371	59.2%	565,590	514,859	91.0%
Code Enforcement	3,986,851	3,179,665	79.8%	3,900,635	3,100,436	79.5%
Communications Department	354,558	272,846	77.0%	730,840	487,137	66.7%
Emergency Dispatch Center	1,703,361	1,229,380	72.2%	1,710,811	1,292,695	75.6%
Fire Rescue	114,398,640	90,690,536	79.3%	115,579,899	89,853,133	77.7%
Parks Recreation & Conservation	32,672,644	21,969,591	67.2%	30,228,701	22,126,956	73.2%
Development Services (PGM)	10,257,080	8,303,498	81.0%	8,214,312	6,662,882	81.1%
Public Utilities	0	0	NA	140,000	48,273	34.5%
Public Works	16,085,853	12,199,202	75.8%	10,689,093	8,282,212	77.5%
Real Estate	3,455,153	2,653,156	76.8%	3,206,295	2,169,614	67.7%
Water Resource Services	140,000	10,508	7.5%	0	0	NA
Elected Officials:						
Property Appraiser	1,735,431	1,559,266	89.8%	1,470,431	1,451,291	98.7%
Sheriff's Office	106,788,315	97,889,297	91.7%	106,195,266	97,345,666	91.7%
Tax Collector	3,990,581	3,548,581	88.9%	3,579,285	3,165,859	88.4%
Non-Departmental Allotments	3,283,835	992,515	30.2%	1,600,305	666,439	41.6%
Interfund Transfers	22,186,477	18,034,243	81.3%	22,309,920	22,207,430	99.5%
Reserves & Refunds	85,998,565	237,905	0.3%	87,456,727	12,120	0.0%
Total	<u>\$408,226,929</u>	<u>\$263,474,560</u>	<u>64.5%</u>	<u>\$399,222,918</u>	<u>\$260,805,202</u>	<u>65.3%</u>

Special Revenues
Summary of Financial Activity for Ten Month Period Ending July 31
Comparative Activity for FY 10 and FY 11

	<u>FY 10</u>			<u>FY 11</u>		
	<u>Revised Budget</u>	<u>Y-T-D Actual</u>	<u>% of Budget</u>	<u>Revised Budget</u>	<u>Y-T-D Actual</u>	<u>% of Budget</u>
Sources:						
Gas Taxes:						
Ninth-Cent Fuel Tax	\$6,332,995	\$5,018,554	79.2%	\$6,829,925	\$4,979,499	72.9%
Six-Cent Local Option Gas Tax	24,279,323	18,656,111	76.8%	25,592,993	18,484,616	72.2%
Constitutional Gas Tax	10,822,773	8,025,971	74.2%	11,163,300	8,137,940	72.9%
County Gas Tax	4,579,515	3,501,678	76.5%	4,937,136	3,557,098	72.0%
Total Gas Taxes	<u>\$46,014,606</u>	<u>\$35,202,314</u>	<u>76.5%</u>	<u>\$48,523,354</u>	<u>\$35,159,153</u>	<u>72.5%</u>
Tourist Development Taxes:						
Tourist Development Tax (3%)	\$11,970,000	\$8,135,647	68.0%	\$11,954,817	\$8,831,761	73.9%
Added Tourist Dev. Tax (1%)	3,990,000	2,711,881	68.0%	3,984,939	2,943,920	73.9%
Added Tourist Dev. Tax (1%)	3,990,000	2,711,881	68.0%	3,984,939	2,943,920	73.9%
Total Tourist Dev. Taxes	<u>\$19,950,000</u>	<u>\$13,559,409</u>	<u>68.0%</u>	<u>\$19,924,695</u>	<u>\$14,719,601</u>	<u>73.9%</u>
Sales Taxes:						
Half-Cent Sales Tax	\$74,106,499	\$55,197,287	74.5%	\$76,616,842	\$57,472,746	75.0%
Half-Cent Sales Surtax (CIT)	88,301,414	64,814,944	73.4%	92,285,866	67,345,039	73.0%
Total Sales Taxes	<u>\$162,407,913</u>	<u>\$120,012,231</u>	<u>73.9%</u>	<u>\$168,902,708</u>	<u>\$124,817,785</u>	<u>73.9%</u>
State Revenue Sharing:						
State Revenue Sharing	\$15,748,934	\$11,473,382	72.9%	\$16,866,961	\$11,199,806	66.4%
Entitlement I	1,835,628	1,376,721	75.0%	1,835,628	1,529,690	83.3%
Entitlement II	4,916,846	3,687,635	75.0%	4,916,846	3,277,898	66.7%
Total State Revenue Sharing	<u>\$22,501,408</u>	<u>\$16,537,738</u>	<u>73.5%</u>	<u>\$23,619,435</u>	<u>\$16,007,394</u>	<u>67.8%</u>

Building Division Permitting Services Fund
Summary of Financial Activity for Ten Month Period Ending July 31
Comparative Activity for FY 10 and FY 11

	FY 10			FY 11		
	Revised Budget	Y-T-D Actual	% of Budget	Revised Budget	Y-T-D Actual	% of Budget
<u>Revenues</u>						
Local Business Tax	\$970,938	\$250,111	25.8%	\$322,000	\$540,891	168.0%
Building Permits	6,944,573	7,383,575	106.3%	8,309,396	7,619,978	91.7%
Charges for Services	1,451,758	1,311,190	90.3%	1,596,554	1,100,597	68.9%
Fines and Forfeitures	31,740	108,276	341.1%	122,490	87,755	71.6%
Interest	95,906	49,728	51.9%	95,200	60,048	63.1%
Change in Fair Market Value	0	11,918	NA	0	9,472	NA
Miscellaneous Revenue	53,577	83,587	156.0%	69,000	81,385	117.9%
Interfund Transfers	1,462,828	1,219,020	83.3%	15,445	15,445	100.0%
Total Revenues	<u>\$11,011,320</u>	<u>\$10,417,405</u>	<u>94.6%</u>	<u>\$10,530,085</u>	<u>\$9,515,571</u>	<u>90.4%</u>
<u>Expenditures</u>						
Personal Services	\$6,204,039	\$4,860,608	78.3%	\$6,283,779	\$4,896,140	77.9%
Operating Expenses	3,151,609	2,204,078	69.9%	2,666,370	2,064,591	77.4%
Equipment	33,000	14,593	44.2%	140,100	123,985	88.5%
Total Expenditures	<u>\$9,388,648</u>	<u>\$7,079,279</u>	<u>75.4%</u>	<u>\$9,090,249</u>	<u>\$7,084,716</u>	<u>77.9%</u>
Net Revenue Over Expenditures	\$1,622,672	\$3,338,126		\$1,439,836	\$2,430,855	
Beginning Fund Balance	3,137,856	3,495,218		4,522,538	7,523,014	
Ending Fund Balance/Reserves	<u>\$4,760,528</u>	<u>\$6,833,344</u>		<u>\$5,962,374</u>	<u>\$9,953,869</u>	
<u>Reserves Detail</u>						
Reserve for Contingency	\$4,760,528			\$5,962,374		
Restricted Reserves	0			0		
Total Reserves	<u>\$4,760,528</u>			<u>\$5,962,374</u>		

County Blended Component Units Fund
Summary of Financial Activity for Ten Month Period Ending July 31
Comparative Activity for FY 10 and FY 11

	FY 10			FY 11		
	Revised Budget	Y-T-D Actual	% of Budget	Revised Budget	Y-T-D Actual	% of Budget
<u>Revenues</u>						
Taxes (formerly under Lic & Permits)	\$35,000	\$6,596	18.8%	\$35,000	\$6,481	18.5%
Charges for Services	1,683,810	793,844	47.1%	1,344,557	663,681	49.4%
Fines and Forfeitures	0	120	NA	0	0	NA
Interest	2,000	692	34.6%	2,000	182	9.1%
Change in Fair Market Value	0	82	NA	0	81	NA
Miscellaneous Revenue	0	0	0.0%	0	0	NA
Interfund Transfers	7,520,331	6,613,978	87.9%	6,905,040	6,905,040	100.0%
Total Revenues	<u>\$9,241,141</u>	<u>\$7,415,312</u>	<u>80.2%</u>	<u>\$8,286,597</u>	<u>\$7,575,465</u>	<u>91.4%</u>
<u>Expenditures</u>						
Personal Services	\$7,231,251	\$5,370,815	74.3%	\$6,610,873	\$4,998,207	75.6%
Operating Expenses	1,729,146	692,651	40.1%	1,425,380	478,683	33.6%
Equipment	73,000	2,877	3.9%	70,000	22,830	32.6%
Library Books	120,000	111,175	92.6%	125,000	68,713	55.0%
Interfund Transfers	91,694	0	0.0%	60,344	0	0.0%
Total Expenditures	<u>\$9,245,091</u>	<u>\$6,177,518</u>	<u>66.8%</u>	<u>\$8,291,597</u>	<u>\$5,568,433</u>	<u>67.2%</u>
Net Revenue Over Expenditures	(\$3,950)	\$1,237,794		(\$5,000)	\$2,007,032	
Beginning Fund Balance	34,817	32,322		29,367	20,906	
Ending Fund Balance/Reserves	<u>\$30,867</u>	<u>\$1,270,116</u>		<u>\$24,367</u>	<u>\$2,027,938</u>	
<u>Reserves Detail</u>						
Reserve for Contingency	\$30,867			\$24,367		
Restricted Reserves	0			0		
Total Reserves	<u>\$30,867</u>			<u>\$24,367</u>		

<p>Blended Component Units Fund Summary of Departmental Activity for Ten Month Period Ending July 31 Comparative Activity for FY 10 and FY 11</p>
--

	FY 10			FY 11		
	Revised Budget	Y-T-D Actual	% of Budget	Revised Budget	Y-T-D Actual	% of Budget
Department:						
Law Library Board	\$467,550	\$380,280	81.3%	\$474,839	\$331,168	69.7%
Civil Service Board	3,705,616	2,055,795	55.5%	3,499,821	2,010,287	57.4%
City-County Planning Commission	4,980,231	3,741,443	75.1%	4,256,593	3,226,981	75.8%
Interfund Transfers	91,694	0	0.0%	60,344	0	0.0%
Reserves & Refunds	30,867	0	0.0%	24,367	0	0.0%
Total	<u>\$9,275,958</u>	<u>\$6,177,518</u>	<u>66.6%</u>	<u>\$8,315,964</u>	<u>\$5,568,436</u>	<u>67.0%</u>

County Transportation Trust Operating Fund
Report on Fund 10-013-001
Summary of Financial Activity for Ten Month Period Ending July 31
Comparative Activity for FY 10 and FY 11

	FY 10			FY 11		
	Revised Budget	Y-T-D Actual	% of Budget	Revised Budget	Y-T-D Actual	% of Budget
<u>Revenues</u>						
Intergovernmental Revenue	\$481,000	\$466,889	97.1%	\$481,000	\$395,121	82.1%
Charges for Services	1,840,000	2,538,953	138.0%	1,933,532	1,647,772	85.2%
Interest	921,000	280,603	30.5%	770,000	169,413	22.0%
Change in Fair Market Value	0	66,409	NA	0	7,970	NA
Miscellaneous Revenue	2,000	74,230	3711.5%	2,000	70,861	3543.1%
Interfund Transfers	7,461,868	6,659,454	89.2%	12,017,438	12,017,438	100.0%
Intrafund Transfers	38,648,093	31,031,961	80.3%	38,543,519	38,212,956	99.1%
Less: 5% Required by Law	(269,450)	0	0.0%	(261,900)	0	0.0%
Total Revenues	<u>\$49,084,511</u>	<u>\$41,118,499</u>	<u>83.8%</u>	<u>\$53,485,589</u>	<u>\$52,521,531</u>	<u>98.2%</u>
<u>Expenditures</u>						
Personal Services	\$33,777,064	\$24,441,779	72.4%	\$29,383,359	\$23,057,949	78.5%
Operating Expenses	26,640,207	18,587,194	69.8%	24,133,340	18,550,037	76.9%
Equipment	15,000	6,188	41.3%	72,700	65,385	89.9%
Grants In Aid	23,500	23,500	100.0%	23,500	23,500	100.0%
Intrafund Transfers	0	0	NA	0	0	NA
Total Expenditures	<u>\$60,455,771</u>	<u>\$43,058,661</u>	<u>71.2%</u>	<u>\$53,612,899</u>	<u>\$41,696,871</u>	<u>77.8%</u>
Net Revenue Over Expenditures	<u>(\$11,371,260)</u>	<u>(\$1,940,162)</u>		<u>(\$127,310)</u>	<u>\$10,824,660</u>	
Beginning Fund Balance	<u>12,361,536</u>	<u>12,419,955</u>		<u>3,649,183</u>	<u>8,042,958</u>	
Ending Fund Balance/Reserves	<u>\$990,276</u>	<u>\$10,479,793</u>		<u>\$3,521,873</u>	<u>\$18,867,618</u>	
<u>Reserves Detail</u>						
Reserve for Contingency	\$276,629			\$2,808,226		
Restricted Reserves	713,647			713,647		
Total Reserves	<u>\$990,276</u>			<u>\$3,521,873</u>		

Library Operating Fund
Report on Fund 10-014-001
Summary of Financial Activity for Ten Month Period Ending July 31
Comparative Activity for FY 10 and FY 11

	FY 10			FY 11		
	Revised Budget	Y-T-D Actual	% of Budget	Revised Budget	Y-T-D Actual	% of Budget
<u>Revenues</u>						
Taxes	\$39,293,797	\$37,344,313	95.0%	\$34,893,356	\$33,147,755	95.0%
Intergovernmental Revenue	162,433	0	0.0%	0	0	NA
Charges for Services	266,590	213,717	80.2%	278,740	167,268	60.0%
Fines and Forfeitures	805,300	453,322	56.3%	523,550	403,598	77.1%
Interest	1,500,000	704,263	47.0%	1,250,000	430,008	34.4%
Change in Fair Market Value	0	149,346	NA	0	78,709	NA
Miscellaneous Revenue	191,156	18,088	9.5%	32,322	175,263	542.2%
Interfund Transfers	594,344	495,280	83.3%	0	0	NA
Non-Revenue Receipts	432,250	0	0.0%	407,250	0	0.0%
Less: 5% Required by Law	(2,156,483)	0	0.0%	(1,865,011)		0.0%
Total Revenues	<u>\$41,089,387</u>	<u>\$39,378,329</u>	<u>95.8%</u>	<u>\$35,520,207</u>	<u>\$34,402,601</u>	<u>96.9%</u>
<u>Expenditures</u>						
Personal Services	\$19,745,333	\$15,498,776	78.5%	\$19,799,040	\$15,338,273	77.5%
Operating Expenses	14,236,057	10,119,699	71.1%	13,735,987	9,909,057	72.1%
Equipment	105,495	104,088	98.7%	107,595	28,220	26.2%
Library Books & Publications	3,051,394	2,587,213	84.8%	2,893,773	2,058,838	71.1%
Grants In Aid	384,755	369,068	95.9%	384,755	372,745	96.9%
Intrafund Transfers	407,692	339,740	83.3%	9,564,817	9,564,817	100.0%
Transfers to Elected Officials	1,224,932	1,033,838	84.4%	1,031,007	930,494	90.3%
Revenue Refund	75,000	56,455	75.3%	75,000	5,373	7.2%
Total Expenditures	<u>\$39,230,658</u>	<u>\$30,108,877</u>	<u>76.7%</u>	<u>\$47,591,974</u>	<u>\$38,207,817</u>	<u>80.3%</u>
Net Revenue Over Expenditures	\$1,858,729	\$9,269,452		(\$12,071,767)	(\$3,805,216)	
Beginning Fund Balance	34,146,845	40,402,364		43,900,000	43,371,330	
Ending Fund Balance/Reserves	<u>\$36,005,574</u>	<u>\$49,671,816</u>		<u>\$31,828,233</u>	<u>\$39,566,114</u>	
<u>Reserves Detail</u>						
Reserve for Contingency	\$1,412,824			\$11,170,512		
Restricted Reserves	34,592,750			20,657,721		
Total Reserves	<u>\$36,005,574</u>			<u>\$31,828,233</u>		

Indigent Health Care Funds
Consolidated Report of Funds 10-009-001 & 10-002-907
Summary of Financial Activity for Ten Month Period Ending July 31
Comparative Activity for FY 10 and FY 11

	FY 10			FY 11		
	Revised Budget	Y-T-D Actual	% of Budget	Revised Budget	Y-T-D Actual	% of Budget
<u>Revenues</u>						
Taxes	\$88,301,414	\$64,814,899	73.4%	\$92,285,866	\$67,287,275	72.9%
Interest	2,700,000	910,258	33.7%	1,360,000	505,262	37.2%
Change in Fair Market Value	0	203,218	NA	0	16,344	NA
Insurance Proceeds	732,598	729,849	99.6%	760,864	693,267	91.1%
Miscellaneous Revenue	6,081,046	5,918,820	97.3%	6,216,809	3,898,170	62.7%
Interfund Transfers	125,947,931	105,060,536	83.4%	112,498,046	84,318,642	75.0%
Less: 5% Required by Law	(4,555,071)	0	0.0%	(4,682,293)	0	0.0%
Total Revenues	<u>\$219,207,918</u>	<u>\$177,637,580</u>	<u>81.0%</u>	<u>\$208,439,292</u>	<u>\$156,718,960</u>	<u>75.2%</u>
<u>Expenditures</u>						
Personal Services	\$6,812,136	\$5,327,442	78.2%	\$6,878,209	\$5,425,234	78.9%
Operating Expenses	9,357,469	6,450,190	68.9%	10,694,364	5,878,319	55.0%
Equipment	701,729	0	0.0%	851,729	0	0.0%
Grants In Aid	115,890,241	64,706,443	55.8%	101,016,944	41,003,372	40.6%
Interfund Transfers	125,689,669	104,845,316	83.4%	112,498,046	84,318,642	75.0%
Refunds	0	0	NA	34,473	26,136	75.8%
Total Expenditures	<u>\$258,451,244</u>	<u>\$181,329,391</u>	<u>70.2%</u>	<u>\$231,973,765</u>	<u>\$136,651,703</u>	<u>58.9%</u>
Net Revenue Over Expenditures	<u>(\$39,243,326)</u>	<u>(\$3,691,811)</u>		<u>(\$23,534,473)</u>	<u>\$20,067,257</u>	
Beginning Fund Balance	<u>70,862,809</u>	<u>67,885,797</u>		<u>46,000,000</u>	<u>54,225,276</u>	
Ending Fund Balance/Reserves	<u>\$31,619,483</u>	<u>\$64,193,986</u>		<u>\$22,465,527</u>	<u>\$74,292,533</u>	
<u>Reserves Detail</u>						
Reserve for Contingency	\$31,619,483			\$22,465,527		
Restricted Reserves	0			0		
Total Reserves	<u>\$31,619,483</u>			<u>\$22,465,527</u>		

Solid Waste Fund
Report on Funds 40-032-001, 40-032-003 & 40-032-024
Summary of Financial Activity for Ten Month Period Ending July 31
Comparative Activity for FY 10 and FY 11

	FY 10			FY 11		
	Revised Budget	Y-T-D Actual	% of Budget	Revised Budget	Y-T-D Actual	% of Budget
<u>Revenues</u>						
Charges for Services	\$103,172,758	\$86,631,653	84.0%	\$102,255,410	\$87,013,314	85.1%
Fines and Forfeitures	0	80	NA	0	0	NA
Interest	964,348	826,984	85.8%	592,202	581,599	98.2%
Change in Fair Market Value	0	171,180	NA	0	140,131	NA
Miscellaneous Revenue	1,162,712	1,468,102	126.3%	90,000	555,699	617.4%
Intrafund Transfers	82,543,809	69,604,531	84.3%	85,363,885	70,037,113	82.0%
Non-Revenue Receipts	0	1,367	0.0%	0	18,772	NA
Less: 5% Required by Law	(2,886,860)	0	0.0%	(3,112,082)	0	NA
Total Revenues	\$184,956,767	\$158,703,897	85.8%	\$185,189,415	\$158,346,628	85.5%
<u>Expenditures</u>						
Personal Services	\$9,897,010	\$7,089,842	71.6%	\$10,190,884	\$7,282,539	71.5%
Operating Expenses	74,908,816	53,321,567	71.2%	75,856,781	54,593,474	72.0%
Equipment	83,000	3,300	4.0%	1,524	0	0.0%
Intrafund Transfers	101,340,246	86,530,621	85.4%	99,825,530	77,397,825	77.5%
Refunds	0	59,015	0.0%	15,000	2,927	0.0%
Total Expenditures	\$186,229,072	\$147,004,345	78.9%	\$185,889,719	\$139,276,765	74.9%
Net Revenue Over Expenditures	(\$1,272,305)	\$11,699,552		(\$700,304)	\$19,069,863	
Beginning Fund Balance	15,094,473	20,547,342		14,547,744	23,052,314	
Ending Fund Balance/Reserves	\$13,822,168	\$32,246,894		\$13,847,440	\$42,122,177	
<u>Reserves Detail</u>						
Reserve for Contingency	13,822,168			13,847,440		
Restricted Reserves	0			0		
Total Reserves	\$13,822,168			\$13,847,440		

Utility System Fund
Report on Funds 40-040-001 & 40-040-003
Summary of Financial Activity for Ten Month Period Ending July 31
Comparative Activity for FY 10 and FY 11

	FY 10			FY 11		
	Revised Budget	Y-T-D Actual	% of Budget	Revised Budget	Y-T-D Actual	% of Budget
<i>Revenues</i>						
License & Permits	\$15,000	\$62,478	416.5%	\$40,000	\$60,740	151.9%
Charges for Services	183,421,114	139,754,452	76.2%	181,010,860	156,145,534	86.3%
Fines and Forfeitures	80,000	68,490	85.6%	76,000	63,574	83.7%
Interest	5,152,761	2,262,188	43.9%	1,948,500	1,596,978	82.0%
Change in Fair Market Value	0	505,571	NA	0	194,145	NA
Miscellaneous Revenue	4,980,746	4,801,175	96.4%	1,562,600	1,670,614	106.9%
Interfund Transfers	466,621	466,621	100.0%	189,843	189,843	100.0%
Intrafund Transfers	126,204,411	101,776,102	80.6%	126,183,751	101,295,250	80.3%
Non-Revenue Receipts	12,000	109,653	913.8%	0	0	NA
Less: 5% Required by Law	(9,535,718)	0	0.0%	(9,199,652)	0	0.0%
Total Revenues	<u>\$310,796,935</u>	<u>\$249,806,730</u>	<u>80.4%</u>	<u>\$301,811,902</u>	<u>\$261,216,678</u>	<u>86.5%</u>
<i>Expenditures</i>						
Personal Services	\$46,351,179	\$35,376,741	76.3%	\$45,816,629	\$34,047,533	74.3%
Operating Expenses	100,113,700	69,079,188	69.0%	98,065,612	76,545,217	78.1%
Equipment	943,989	173,843	18.4%	278,626	160,138	57.5%
Revenue Refunds	0	0	0.0%	0	0	0.0%
Intrafund Transfers	181,418,887	124,335,312	68.5%	175,625,681	129,886,008	74.0%
Total Expenditures	<u>\$328,827,755</u>	<u>\$228,965,084</u>	<u>69.6%</u>	<u>\$319,786,548</u>	<u>\$240,638,896</u>	<u>75.2%</u>
Net Revenue Over Expenditures	<u>(\$18,030,820)</u>	<u>\$20,841,646</u>		<u>(\$17,974,646)</u>	<u>\$20,577,782</u>	
Beginning Fund Balance	<u>21,377,441</u>	<u>21,589,496</u>		<u>21,026,603</u>	<u>22,326,558</u>	
Ending Fund Balance/Reserves	<u>\$3,346,621</u>	<u>\$42,431,142</u>		<u>\$3,051,957</u>	<u>\$42,904,340</u>	
<i>Reserves Detail</i>						
Reserve for Contingency	\$0			\$51,957		
Restricted Reserves	3,346,621			3,000,000		
Total Reserves	<u>\$3,346,621</u>			<u>\$3,051,957</u>		

Fleet Services Fund (50-066)
Summary of Financial Activity for Ten Month Period Ending July 31
Comparative Activity for FY 10 and FY 11

	FY 10			FY 11		
	Revised Budget	Y-T-D Actual	% of Budget	Revised Budget	Y-T-D Actual	% of Budget
<u>Revenues</u>						
Charges for Services	\$31,993,570	\$20,591,155	64.4%	\$30,282,026	\$24,156,969	79.8%
Interest	870,000	455,185	52.3%	828,000	281,602	34.0%
Change in Fair Market Value	0	104,486	NA	0	40,090	NA
Miscellaneous Revenue	1,171,406	1,811,036	154.6%	1,191,955	877,883	73.7%
Interfund Transfers	377,095	314,250	83.3%	0	0	NA
Intrafund Transfers	200,499	167,080	83.3%	204,191	204,191	100.0%
Total Revenues	<u>\$34,612,570</u>	<u>\$23,443,192</u>	<u>67.7%</u>	<u>\$32,506,172</u>	<u>\$25,560,735</u>	<u>78.6%</u>
<u>Expenditures</u>						
Personal Services	\$4,682,861	\$3,503,469	74.8%	\$4,316,260	\$3,436,563	79.6%
Operating Expenses	13,694,860	8,402,014	61.4%	13,134,741	9,901,559	75.4%
Equipment	16,669,445	5,296,811	31.8%	19,504,937	4,675,708	24.0%
Interfund Transfers	8,114,157	6,761,800	83.3%	4,881,199	4,881,199	100.0%
Intrafund Transfers	200,499	167,080	83.3%	204,191	204,191	100.0%
Revenue Refund	0	0	NA	0	0	NA
Total Expenditures	<u>\$43,361,822</u>	<u>\$24,131,174</u>	<u>55.7%</u>	<u>\$42,041,328</u>	<u>\$23,099,220</u>	<u>54.9%</u>
Net Revenue Over Expenditures	<u>(\$8,749,252)</u>	<u>(\$687,982)</u>		<u>(\$9,535,156)</u>	<u>\$2,461,515</u>	
Beginning Fund Balance	<u>33,268,910</u>	<u>40,440,960</u>		<u>40,808,277</u>	<u>41,383,635</u>	
Ending Fund Balance/Reserves	<u>\$24,519,658</u>	<u>\$39,752,978</u>		<u>\$31,273,121</u>	<u>\$43,845,150</u>	
<u>Reserves Detail</u>						
Reserve for Contingency	\$2,561,122			\$2,085,011		
Restricted Reserves	21,958,536			29,188,110		
Total Reserves	<u>\$24,519,658</u>			<u>\$31,273,121</u>		

Self-Insurance Fund (50-067)
Summary of Financial Activity for Ten Month Period Ending July 31
Comparative Activity for FY 10 and FY 11

	FY 10			FY 11		
	Revised Budget	Y-T-D Actual	% of Budget	Revised Budget	Y-T-D Actual	% of Budget
<u>Revenues</u>						
Intergovernmental Revenue	\$300,000	\$0	0.0%	\$500,000	\$0	0.0%
Charges for Services	91,723,891	77,511,650	84.5%	94,968,453	75,795,115	79.8%
Fines and Forfeits	0	0	NA	0	59	NA
Interest	5,467,600	2,281,576	41.7%	2,539,353	1,436,714	56.6%
Change in Fair Market Value	0	548,295	NA	0	173,148	NA
Miscellaneous Revenue	1,948,189	3,760,833	193.0%	2,645,660	2,478,285	93.7%
Intrafund Transfers	640,000	533,340	83.3%	900,000	900,000	100.0%
Total Revenues	\$100,079,680	\$84,635,694	84.6%	\$101,553,466	\$80,783,321	79.5%
<u>Expenditures</u>						
Personal Services	\$3,468,422	\$2,062,341	59.5%	\$3,314,019	\$2,181,844	65.8%
Operating Expenses	98,721,098	65,622,092	66.5%	93,125,861	59,222,332	63.6%
Intrafund Transfers	640,000	533,340	83.3%	900,000	900,000	100.0%
Interfund Transfers	27,564,025	22,970,020	83.3%	0	0	NA
Refunds	3,894,980	3,914,708	100.5%	0	0	NA
Total Expenditures	\$134,288,525	\$95,102,501	70.8%	\$97,339,880	\$62,304,176	64.0%
Net Revenue Over Expenditures	(\$34,208,845)	(\$10,466,807)		\$4,213,586	\$18,479,145	
Beginning Fund Balance	198,518,321	204,911,268		181,235,823	186,378,276	
Ending Fund Balance/Reserves	\$164,309,476	\$194,444,461		\$185,449,409	\$204,857,421	
<u>Reserves Detail</u>						
Reserve for Contingency	\$118,295,227			\$137,312,853		
Restricted Reserves	46,014,249			48,136,556		
Total Reserves	\$164,309,476			\$185,449,409		

Self-Insurance Subfunds
Summary of Financial Activity for Ten Month Period Ending July 31

	Administration		Workers Compensation		General Liability		Catastrophic Disaster	
	Revised Budget	Y-T-D Actual	Revised Budget	Y-T-D Actual	Revised Budget	Y-T-D Actual	Revised Budget	Y-T-D Actual
Revenues								
Intergovernmental Revenue			500,000	0				
Internal Service Fund Fees/Charges			7,376,705	6,817,572	2,176,335	2,066,615		
Other Charges & Fees					6,810,000	7,631,436		
Fines and Forfeitures								
Interest Earnings	1,583	3,212	821,000	274,358	220,000	155,612	890,000	640,403
Change in Fair Market Value	0	483	0	27,363	0	12,988	0	78,060
Insurance Proceeds			533,200	1,065,201	47,165	110,067		
Miscellaneous Revenues			15,295	37,824	250,000	5,696		
Intrafund Transfers	900,000	900,000						
Total Revenues	\$901,583	\$903,695	\$9,246,200	\$8,222,318	\$9,503,500	\$9,982,414	\$890,000	\$718,463
Expenditures								
Personal Services	\$855,085	\$593,840						
Wage Loss Benefits			\$1,800,000	\$1,049,187				
Operating Expenses	35,879	8,730	913,400	604,813	\$410,000	\$279,613		
Other Insurance & Bonds			625,000	330,402	6,810,000	3,506,980		
Claim Payments W/C Medical/Other			5,100,000	4,134,349				
Claim Payments Auto/Gen Lab					2,013,000	1,256,422		
Claim Payments Emp Health								
Equipment								
Inter/Intrafund Transfers			450,000	450,000	450,000	450,000		
Refunds								
Total Expenditures	\$890,964	\$602,570	\$8,888,400	\$6,568,751	\$9,683,000	\$5,493,015	\$0	\$0
Net Revenue Over Expenditures	\$10,619	\$301,125	\$357,800	\$1,653,567	(\$179,500)	\$4,489,399	\$890,000	\$718,463
Beginning Fund Balance	120,000	307,915	34,700,000	34,497,641	24,900,000	25,423,649	89,830,978	90,162,086
Ending Fund Balance/Reserves	\$130,619	\$609,040	\$35,057,800	\$36,151,208	\$24,720,500	\$29,913,048	\$90,720,978	\$90,880,549
Reserves Detail								
Reserve for Contingency	\$130,619		\$15,518,387		\$20,619,565		\$90,720,978	
Restricted Reserves	0		19,539,413		4,100,935		0	
Total Reserves	\$130,619		\$35,057,800		\$24,720,500		\$90,720,978	

Self-Insurance Subfunds
Summary of Financial Activity for Ten Month Period Ending July 31

	Group Health		OPEB/Retiree Health		Tax Coll OPEB/Retiree Health		Sheriff OPEB/Retiree Health	
	Revised Budget	Y-T-D Actual	Revised Budget	Y-T-D Actual	Revised Budget	Y-T-D Actual	Revised Budget	Y-T-D Actual
Revenues								
Intergovernmental Revenue								
Internal Service Fund Fees/Chugs	47,566,300	37,893,878	4,557,608	1,306,625	86,085	52,811		
Other Charges & Fees	26,395,420	20,026,178						
Fines and Forfeitures	0	59						
Interest Earnings	440,000	266,082	160,000	81,259	1,770	1,631	5,000	14,156
Change in Fair Market Value	0	40,866	0	11,467	0	195	0	1,726
Insurance Proceeds	800,000	508,927						
Miscellaneous Revenues	1,000,000	750,570						
Interfund Transfers								
Total Revenues	\$76,201,720	\$59,486,560	\$4,717,608	\$1,399,351	\$87,855	\$54,637	\$5,000	\$15,882
Expenditures								
Personal Services	\$658,934	\$538,822						
Wage Loss Benefits								
Operating Expenses	3,078,825	2,086,811						
Other Insurance & Bonds	1,250,757	542,334						
Claim Payments W/C Medical								
Claim Payments Auto/Gen Lab								
Claim Payments Emp Health	72,889,000	46,471,878						
Equipment								
Intrafund Transfers								
Refunds								
Total Expenditures	\$77,877,516	\$49,639,845	\$0	\$0	\$0	\$0	\$0	\$0
Net Revenue Over Expenditures	(\$1,675,796)	\$9,846,715	\$4,717,608	\$1,399,351	\$87,855	\$54,637	\$5,000	\$15,882
Beginning Fund Balance	18,000,000	22,857,989	11,500,000	10,912,242	177,245	223,692	2,007,600	1,993,062
Ending Fund Balance/Reserves	\$16,324,204	\$32,704,704	\$16,217,608	\$12,311,593	\$265,100	\$278,329	\$2,012,600	\$2,008,944
Reserves Detail								
Reserve for Contingency	\$10,058,204		\$0		\$0		\$0	
Restricted Reserves	6,266,000		16,217,608		265,100		2,012,600	
Total Reserves	\$16,324,204		\$16,217,608		\$265,100		\$2,012,600	

<p>Government Agencies Summary of Financial Activity for Ten Month Period Ending July 31</p>

	Revised Budget	Y-T-D Actual	% of Budget
Countywide General Fund			
Aquaculture Lab (University of Florida)	\$57,000	\$23,750	41.7%
Florida Division of Forestry	28,609	28,608	100.0%
Hartsaver Bus Passes & Van Pool Discounts	176,000	119,123	67.7%
Health Department	403,235	272,285	67.5%
National Estuary Program	83,974	83,974	100.0%
Plant City Tax Increment Financing	570,822	510,559	89.4%
School Board Racing Commission	446,500	446,500	100.0%
Tampa Bay Regional Planning Council	361,068	361,068	100.0%
Tampa Sports Authority (Operating Deficit & Taxes)	1,039,878	0	0.0%
Tampa Tax Increment Financing	10,082,317	8,650,841	85.8%
Temple Terrace Tax Increment Financing	76,019	56,828	74.8%
Subtotal	\$13,325,422	\$10,553,536	79.2%
Countywide Special Purpose Revenue Fund			
Tampa Marine Law Enforcement	\$182,000	\$182,000	100.0%
Temple Terrace Marine Law Enforcement	60,000	60,000	100.0%
Dept of Juvenile Justice	7,729,848	4,158,029	53.8%
School Site Impact Fee Commissions	59,000	21,502	36.4%
Subtotal	\$8,030,848	\$4,421,531	55.1%
Sales Tax Revenue Fund			
CIT Distributions/City of Plant City	\$1,278,320	\$992,257	77.6%
CIT Distributions/City of Tampa	13,018,683	10,101,002	77.6%
CIT Distributions/City of Temple Terrace	919,494	713,729	77.6%
CIT Distributions/School Board	21,917,893	16,836,260	76.8%
CIT Distributions/Tampa Sports Authority	9,687,000	6,988,738	72.1%
Sports Authority Sports Facility Sales Tax Bonds	2,003,303	1,501,103	74.9%
Tampa Sports Authority - O&M Deficit	800,000	266,667	33.3%
Subtotal	\$49,624,693	\$37,399,756	75.4%
County Transportation Trust Fund			
Alternative Transportation Program	23,500	23,500	100.0%
Ninth-Cent Gas Tax Distribution - Plant City	165,948	127,356	76.7%
Ninth-Cent Gas Tax Distribution - Tampa	1,692,909	1,299,211	76.7%
Ninth-Cent Gas Tax Distribution - Temple Terrace	119,387	91,623	76.7%
Road Network Impact Fee Program	67,410	0	0.0%
Subtotal	\$2,069,154	\$1,541,690	74.5%
4th Cent Tourist Development Tax Fund			
Tampa Sports Authority/Legends Field Improv Bonds	\$561,937	\$0	0.0%
Subtotal	\$561,937	\$0	0.0%
Capital Projects Fund			
Tampa Sports Authority Arena Improvement	\$0	\$404,789	0.0%
Subtotal	\$0	\$404,789	0.0%
Total Government Agencies	\$73,612,054	\$54,321,302	73.8%

Non-Departmental Allotments
Summary of Financial Activity for Ten Month Period Ending July 31

	Revised Budget	Y-T-D Actual	% of Budget
Countywide General Fund			
Bond Counsel	40,000	38,459	96.1%
Brandon Chamber of Commerce	30,000	6,450	21.5%
Clerk's Armed Guard Services	70,000	45,475	65.0%
Commercial Insurance	2,075,288	2,075,288	100.0%
Committee of 100/Bio Technology Project	89,000	0	0.0%
Constitutional Officers Salary Increases	5,000	0	0.0%
Cost Allocation Plan	40,000	38,245	95.6%
Economic Development Activity	816,300	689,129	84.4%
Employee Tuition Reimbursement	75,000	26,125	34.8%
Fallen Heroes Fund	200,000	0	0.0%
Financial Advisor	15,000	2,158	14.4%
Financial Audit Services	310,000	171,930	55.5%
Flexible Spending Account Admin Fees	63,000	19,628	31.2%
Health Insurance Subsidy-Retired Employees	217,000	192,490	88.7%
Impound Lot - Veterinary Svcs & Advertising	1,200	175	14.6%
Intergovernmental Representation	153,000	145,500	95.1%
International Protocol Officer Partnership	40,000	16,469	41.2%
Jury Parking	175,000	125,393	71.7%
Law Library Commercial Insurance	1,026	1,026	100.0%
Legal Advertising	80,000	41,296	51.6%
Membership - Florida Assoc. of Counties	107,130	107,130	100.0%
Membership - Innovations Group	7,500	0	0.0%
Membership - National Assoc. of Counties	23,019	19,369	84.1%
Membership - National Forum Black Public Admin.	2,500	0	0.0%
Non-Ad Valorem Assessments	35,000	2,536	7.2%
Other Costs - Clerk	0	1,085	N/A
Other Costs - Emergency Management	0	78,680	N/A
Outside Legal/Attorneys	400,000	162,441	40.6%
Performance Audits	150,000	62,170	41.4%
Recording Fees	15,000	8,540	56.9%
Redistricting Expenses	23,000	7,296	31.7%
Security Services - County Center	481,912	195,040	40.5%
Sinkhole Grant Awards	500,000	22,600	4.5%
Sterling Award	50,323	750	1.5%
Tampa Bay Partnership	40,000	40,000	100.0%
Tampa Bay Water Issues	200,000	90,278	45.1%
Tampa/Hillsborough Economic Development Corp	361,000	225,000	62.3%
Tax Deed Sale Expenses	5,000	17,387	347.7%
Tax Deed Title Searches	5,000	31,172	623.4%
Tax Notice Mailing Costs	75,000	68,678	91.6%
TRIM Mailing Costs	240,000	0	0.0%
Unemployment Benefits	170,250	47,247	27.8%
USF High Tech Incubator	200,000	200,000	100.0%
USF Office for Technology Entrepreneurship (Enterprise Corp)	40,000	0	0.0%
Victims Assistance	62,351	0	0.0%
Subtotal	\$7,689,799	\$5,022,635	65.3%
Unincorporated Area General Fund			
Affordable Housing Program Costs	\$500,000	\$0	0.0%
Constitutional Officers Salary Increases	5,000	428	8.6%
Economic Development Activity	183,200	2,036	1.1%
Hearing Masters - Parking Violations	3,000	900	30.0%
Historic Landmark Resource Program	25,000	7,510	30.0%
Impact Fee Relief - Non-Profits	11,170	0	0.0%
Impact Fee Waiver - No Fee Zones	150,000	0	0.0%
Local Ordinance Enforcement - Filing Fees	5,000	2,690	53.8%
Local Ordinance Enforcement - Public Defender	50,000	11,400	22.8%
Local Ordinance Enforcement - State Attorney	24,000	12,000	50.0%
Red Light Camera Monitoring Costs	630,000	615,541	97.7%
Viacom Billboard Lease	13,935	13,934	100.0%
Subtotal	\$1,600,305	\$666,439	41.6%
Countywide Special Purpose Revenue Fund			
ITS Systems Replacement/Upgrade	\$0	\$61,067	N/A
JBI Commission for DOJ Reimbursements	105,619	105,619	100.0%
Tampa General Hospital	3,500,000	3,500,000	100.0%
Subtotal	\$3,605,619	\$3,666,686	101.7%
Unincorporated Area Special Purpose Fund			
Environmental Buffers Study	0	26,459	NA
Tampa Port Authority (PORTS)	\$150,000	\$150,000	100.0%
Subtotal	\$150,000	\$176,459	117.6%
Intergovernmental Grants Fund			
COBRA Premium Assistance - ARRA	\$0	\$59,608	NA
Disaster Events Exercise	384,469	0	0.0%
Subtotal	\$384,469	\$59,608	NA
County Transportation Trust Fund			
SBA Administration Fees	\$1,800	\$1,220	67.8%
Subtotal	\$1,800	\$1,220	67.8%
Self-Insurance Fund			
<i>Workers Compensation Insurance</i>			
Wage Loss Benefits	\$1,800,000	\$1,049,187	58.3%
Claim Payments	5,100,000	4,134,349	81.1%
Insurance Purchases	625,000	330,402	52.9%
Refunds	0	0	0.0%
Administrative Costs	889,100	604,813	68.0%
<i>General Liability Insurance</i>			
Claim Payments	2,013,000	1,256,422	62.4%
Insurance Purchases	6,810,000	3,506,980	51.5%
Administrative Costs	410,000	279,613	68.2%
<i>Employee Group Health Insurance</i>			
Claim Payments	72,889,000	46,471,878	63.8%
Insurance Purchases	1,250,000	541,577	43.3%
Administrative Costs	2,995,000	2,065,263	69.0%
Subtotal	\$94,781,100	\$60,240,484	63.6%
Total Allotments by Legislative Acts	\$108,213,092	\$69,833,531	64.5%

Non-Profit Organizations
Summary of Financial Activity for Ten Month Period Ending July 31

	Revised Budget	Y-T-D Actual	% of Budget
Countywide General Fund			
A Brighter Community (Formerly Bright Horizons)	\$5,904	\$0	0.0%
Agency for Community Treatment Services (ACTS)	534,975	412,765	77.2%
Alpha House, Inc.	45,964	45,964	100.0%
Arts Council	687,227	565,420	82.3%
Bolesta	11,308	0	0.0%
Boys and Girls Clubs	71,442	49,384	69.1%
Boys and Girls Clubs Summer Program	28,125	0	0.0%
Catholic Charities - Choose Life Distribution	50,799	41,743	82.2%
CDC of Tampa	34,020	25,740	75.7%
Centre for Women	43,659	29,500	67.6%
Child Abuse Council, Inc.	51,000	42,615	83.6%
Children's Home, Inc.	111,690	84,769	75.9%
Community Tampa Bay	5,569	5,569	100.0%
Computer Mentors Group	10,821	10,821	100.0%
Cornerstone Ministries (Formerly United Methodist Ct)	18,900	11,080	58.6%
County Historical Advisory Board	2,531	0	0.0%
Crisis Center - Eldernet	14,586	13,818	94.7%
Crisis Center/Transportation/Nurse Examiner	1,413,355	1,057,165	74.8%
DACCO	672,200	541,789	80.6%
Economic Development External Organizations	5,000	5,000	100.0%
Family Justice Center	75,000	50,000	66.7%
Francis House	9,600	7,174	74.7%
Girl Scouts of Suncoast Council	19,987	0	0.0%
Goodwill Industries	358,768	193,586	54.0%
Greater Palm River Point CDC	10,125	5,079	50.2%
Gulf Coast Epilepsy Fund	15,840	5,512	34.8%
Gulf Ridge Boy Scouts	19,987	19,987	100.0%
Hispanic Business Initiative Fund	27,281	14,106	51.7%
Hispanic Needs and Services Council	34,750	23,852	68.6%
Lowry Park Zoo	250,000	250,000	100.0%
Mary & Martha House	22,313	18,972	85.0%
Mental Health Care, Inc.	64,800	39,392	60.8%
Museum of Science and Industry	430,312	286,880	66.7%
N. Tampa Life Enrichment Center	11,250	10,633	94.5%
NAACP Empowerment Center	11,250	0	0.0%
Quantum Leap Farm	12,972	8,442	65.1%
Redland Christian Migrants	60,578	60,578	100.0%
Self Reliance	14,742	14,742	100.0%
Seniors in Service	6,000	3,504	58.4%
Sickle Cell Association	26,529	20,036	75.5%
Tampa Bay Black Heritage Festival	14,062	14,062	100.0%
Tampa Bay History Center	177,187	132,890	75.0%
Tampa Bay Sports Commission	300,000	273,330	91.1%
Tampa Crossroads	99,113	77,290	78.0%
Tampa Lighthouse for the Blind	26,990	26,990	100.0%
Tampa Metro Area YMCA Weed and Seed	14,805	14,805	100.0%
The Spring of Tampa Bay	90,143	90,143	100.0%
Trinity Cafe	72,250	72,250	100.0%
United Cerebral Palsy	11,386	10,797	94.8%
Veteran's Council of Hillsborough County	7,000	6,969	99.6%
YES of America United	7,500	7,500	100.0%
Subtotal	\$6,121,595	\$4,702,643	76.8%
Countywide Special Purpose Revenue Fund			
Bay Area Legal Services	\$1,100,000	\$1,100,000	100.0%
Subtotal	\$1,100,000	\$1,100,000	100.0%
Sales Tax Revenue Fund			
<i>3% Tourist Development Tax</i>			
Apollo Beach Chamber of Commerce	\$10,000	\$7,632	76.3%
Arts Council	14,000	10,686	76.3%
County Arts & Cultural Co-op	165,000	125,927	76.3%
Downtown Attractions	15,000	11,447	76.3%
Florida Aquarium	100,000	76,319	76.3%
Lowry Park Zoo	100,000	76,319	76.3%
Museum of Science and Industry	100,000	76,319	76.3%
Plant City Chamber of Commerce	65,000	29,851	45.9%
Plant City Stadium	400,000	83,846	21.0%
Ruskin Chamber of Commerce	5,000	0	0.0%
Straz Performing Arts Center	500,000	381,596	76.3%
Tampa Bay Black Heritage Festival	15,000	11,447	76.3%
Tampa Bay CVB	8,125,000	6,200,955	76.3%
Tampa Bay CVB - Westshore	22,500	22,500	100.0%
Tampa Bay Sports Commission	450,000	343,436	76.3%
Tampa Bay Sports Commission - Dragon Boats	50,000	0	0.0%
Tampa Convention Center	1,916,000	887,695	46.3%
Tampa History Center	10,000	7,632	76.3%
Ybor City Chamber of Commerce	75,000	57,240	76.3%
Subtotal	\$12,137,500	\$8,410,847	69.3%
Intergovernmental Grants Fund			
<i>CDRG Human Services Programs</i>			
Bay Area Legal Services	\$31,546	\$31,546	100.0%
Big Brothers Big Sisters	29,010	24,393	84.1%
Boys and Girls Club	22,533	17,072	75.8%
Catholic Charities - Reach	68,623	53,659	78.2%
Children's Home Society	123,380	92,449	74.9%
Computer Mentors Group	25,988	2,020	7.8%
Corp to Develop Communities	28,013	15,361	54.8%
Gulf Coast Jewish Families	22,592	22,592	100.0%
HARC - Alzheimer Care Staff	71,591	39,370	55.0%
Hispanic Services Council	23,165	15,521	67.0%
Mary & Martha House	30,026	14,480	48.2%
Redland Christian Migrants	50,535	33,947	67.2%
Seniors in Service	23,044	17,162	74.5%
Tampa Bay Academy of Hope	20,000	1,065	5.3%
Tampa Metro Area YMCA	21,685	7,381	34.0%
The Spring of Tampa Bay	36,054	36,861	102.2%
United Cerebral Palsy	24,877	24,870	100.0%
Subtotal	\$652,662	\$449,749	68.9%
Total Non-Profit Organizations	\$20,011,757	\$14,663,239	73.3%

Unincorporated Area Capital Projects Fund (30-004-608)
Sources & Uses of Communications Svcs. Tax Earmarked for Fire Rescue
Summary of Financial Activity as of July 31, 2011
Comparative Activity for FY 11 and Inception to Date

	All-Years Budget	Y-T-D Actual	All-Years Actual	% of Budget
<u>Revenues</u>				
Communications Services Tax				
FY 07 - FY 10	\$43,880,082	\$8,684,006	\$43,880,082	100.0%
FY 05 - FY 10	5,921,124	0	5,751,124	97.1%
Prior to FY 05	3,704,696	0	3,704,696	100.0%
Total Revenues	\$53,505,902	\$8,684,006	\$53,335,902	99.7%
<u>Expenditures</u>				
Operating	(e) \$706,533	\$0	\$719,041	101.8%
		100,000	100,000	100.0%
Capital Equipment	280,518	0	281,277	100.3%
Capital Projects:				
139th Ave Fire Station	2,848,000	267,507	2,083,548	73.2%
Anderson Rd. New Fire Station	*	1,137	0	1,137
			11,810	100.0%
Bearss Ave New Fire Station	11,810	0	11,810	100.0%
Central Brandon Fire Station	84,011	0	84,011	100.0%
Country Place Fire Station	*	850,118	0	850,118
			5,186,704	95.2%
Fire Rescue Equip Replacement - CST	5,450,949	3,363,234	5,186,704	95.2%
Fire Stations Hardening	5,700,000	1,034,374	2,884,151	50.6%
Gibsonston FS Expansion / Renovation	1,655,000	7,905	1,319,588	79.7%
Land Acquisition - Anderson Rd FS	*	(a) 36,344	0	33,479
			296,065	92.1%
Land Acquisition - Bearss Ave FS	*	(b) 296,575	0	296,065
			3,078	99.8%
Land Acquisition - Central Brandon FS	*	(c) 3,078	0	3,078
			5,056	100.0%
Land Acquisition - Fishhawk FS	*	5,056	0	5,056
			90,746	100.4%
Land Acquisition - Hamner Tower FS	90,405	0	90,746	100.4%
Land Acquisition - New Fire Stations	100,000	0	49,503	49.5%
Land Acquisition - Nuccio Pk. FS	*	356,472	0	356,472
			0	100.0%
Land Acquisition - Plantation FS	0	0	0	NA
Land Acquisition - Port Sutton FS	31,906	0	31,906	100.0%
Land Acquisition - Racetrack Rd. FS	*	3,288	0	3,288
			479,040	100.0%
Land Acquisition - Seffner Mango FS	*	479,885	0	479,040
			0	99.8%
Land Acquisition - Sun City Center West FS	*	(d) 0	0	0
			0	NA
Land Acquisition - Vandenburg FS	0	0	0	NA
Northdale FS - Construction	884,409	0	884,410	100.0%
Ruskin Fire Station Relocation	1,737,000	369,405	846,469	48.7%
Seffner Mango Fire Station Replacement	2,415,000	7,049	2,044,250	84.6%
South Brandon FS #7- Replacement	(f) 0	0	0	NA
Springhead Fire Station Relocation	2,084,000	74,296	95,697	4.6%
Transfer to 01-003001	25,739,392	8,684,006	25,739,392	100.0%
Total Expenditures	\$51,950,886	\$13,807,775	\$44,480,233	85.6%
* Land has been acquired				
Net Revenue Over Expenditures	\$1,555,016	-\$5,123,769	\$8,855,669	NA
<u>Reserves Detail</u>				
Restricted Reserves	\$1,569,471			
Total Reserves	\$1,569,471			

- (a) Potential site owned by State of Florida has been identified.
- (b) Land was purchased for this fire station at 22nd St., however it has been determined that it will be needed for stormwater drainage for the 22nd St. project. Alternate site acquired at Livingston Avenue. Expenditure adjustment for the original site was processed in March 2006 (-355,951).
- (c) Will require reimbursement to CIT fund.
- (d) BOCC set aside a portion of the South County Service Center land in Ruskin for this fire station on September 15, 2004. Will require reimbursement to CIT Fund.
- (e) First year staffing and purchase of two new ALS units. (B/A 4/06/05); original appropriation \$925,874, unused balance owed to CST Reserve \$206,833.
- (f) South Brandon FS #7- Replacement to be funded in FY 13