

Hillsborough County Office of Neighborhood Relations

Volume 7 Issue 2 www.hillsboroughcounty.org/onr Mar./Apr. 2004

HILLSBOROUGH COUNTY BOARD OF COUNTY COMMISSIONERS



2004 Hillsborough County Neighborhoods Conference is Here!

March 27 marks the inaugural Hillsborough County Neighborhoods Conference to be held at the HCC Dale Mabry Campus between 8:00 a.m. and 3:00 p.m.. Neighborhood and homeowner association members and county staff are excited about the event and the networking opportunities that will be available during this day of workshops and exhibits.



Registration is in full swing and will continue until the day of the conference. Remember that registration before March 12 costs only \$10 for a day of workshops, exhibits, and luncheon. After March 12, the cost will go up to \$15. The conference, which is designed to provide information to residents of Hillsborough County, will feature exhibit booths from county agencies and businesses. In addition, several County Commissioners will be in attendance to hand out the 2004 Neighborhood Recognition Awards.

Don't forget to register early. This will save money and guarantee you a space in the workshops that will be most beneficial to your association. For more information or for registration information visit the Office of Neighborhood Relations Website at www.hillsboroughcounty.org/onr or call 272-5860.

IN THIS ISSUE!

Voting Options	Page 1
Community Cleanup	Page 3
PLAN 2025	Page 4
Dangerous Dogs	Page 5
Spotlight	Page 6
Public Art Supporter	Page 7
Brazilian Pepper	Page 9
Buy Green and Save	Page 10
Neighborhood Projects	Page 10
Address Identification	Page 11

Supervisor Of Elections Announces Year-Long Campaign Spotlighting Voter Registration and Early Voting Options

In an effort to make voting in Hillsborough County more convenient than ever before, Supervisor of Elections Buddy Johnson announced plans for three countywide voter registration drives and expanded early voting sites to correspond with each of the 2004 election cycles.

To make it easier for people to register to vote, the Elections office will set up special "registration stations" throughout the county in the days leading up to the deadline to register to vote in each of the three major 2004 elections the Presidential Preference Primary, the Primary and the General Election.

The first of the three registration drives began on Feb. 5 and placed special emphasis on registering voters in the 18-22 age bracket. It was a five-day effort leading up to the midnight, Feb. 9, deadline to register to vote in the March 9 Presidential Preference Primary Election.

The effort began with a daylong registration on the campuses of the University of South Florida, the University of Tampa and Hillsborough Community College. In the following days, the Supervisor's office set up "registration stations" at select Walgreens drugstores, Kash n' Karry supermarkets, area shopping malls and the four county libraries that will serve as early voting sites for the Presidential Preference Primary.



Office of Neighborhood Relations
Phone: 813-272-5860
Fax: 813-272-5882

continued on Page 2

Serving Neighborhoods Throughout Hillsborough County!

Voter Registration

continued from Page 1

Johnson also officially announced plans for early voting sites at county libraries four for the Presidential Preference Primary, six for the Primary and eight for the General Election. Early voting will begin two weeks prior to each election. In addition, the Supervisor's offices in downtown Tampa and on Falkenburg Road near Brandon will offer early voting as they did in the past.

This is the first time in Hillsborough County that early voting will be offered outside of the Supervisor's offices. The idea behind these remote early voting sites is to give residents more flexibility in when and where they cast their ballots-rather than having to vote on a single day at a single precinct, residents can vote at their convenience during their daily travels around the community.

Of course, residents can still take the traditional paths of voting at their designated polling place on Election Day, or voting by absentee ballot. Registered voters have received new voter ID cards in the past few weeks with early voting and registration information included.

Johnson also reminded citizens that they can always register to vote at a wide variety of locations, such as driver's license offices, libraries, government buildings and assisted living facilities.



Editor's Corner

By Tony LaColla
Neighborhood Connections
Editor



In March, we will hold the Inaugural Hillsborough County Neighborhoods Conference. The conference has been an idea for several years. Now through a collaborative effort between the Board of County Commissioners and Hillsborough Community College, as well as numerous private sponsors, the conference has become a reality. Months of planning is about to come together to provide a day where neighborhood leaders from around Hillsborough County can come together to network and gather information to take back to their neighborhoods. We hope every neighborhood association can take advantage of this great opportunity and send representatives. I'm sure you will find the workshops informative.

In addition to the conference, we are also about to begin accepting applications for our 2005 neighborhood mini-grants. Applications will be available at the Neighborhoods Conference and in April by calling our office or visiting our website at www.hillsboroughcounty.org/onr. During the early summer, we will hold information sessions at various locations throughout the county. Dates and times will be posted in the next newsletter and on our website. The mini-grant program has become very popular, and this year should be no different.

We look forward to seeing everyone at the Inaugural Hillsborough County Neighborhoods Conference!!



Welcome to Your Watershed!
Mini-Festival



Inside the Ruskin Tomato and Heritage Festival

- When:** Saturday and Sunday, May 1 and 2 from 10:00 a.m. - 4:00 p.m.
- Where:** E.G. Simmons Park, 19th Avenue NW, Ruskin
- Who:** Everyone who lives in a watershed (That's EVERYONE)
- Why:** To learn about the wonderful watershed we live in— and maybe earn a prize, PLUS lots of giveaways!
- Cost:** The watershed festival is free with \$3 paid admission to the Ruskin Tomato and Heritage Festival - which also boasts a car show, plant sale, food court, contests, entertainment and FREE sliced tomatoes!



This watershed festival is made possible by a Community Education grant from the Alafia, Hillsborough, and Northwest Hillsborough River Basin Boards of the Southwest Florida Water Management District and by the wonderful staff of Hillsborough County Parks, Recreation and Conservation Department.

Help Spruce Up Your Community With The Great American Cleanup



Thousands of volunteers in the Bay Area are expected to join forces this spring as part of a nationwide community improvement effort during the Great American Cleanup.

Keep Hillsborough County Beautiful is coordinating the event locally and expects about 1,500 volunteers to participate during the countywide cleanup on April 17. Check-in will be at 8:30 a.m., and the cleanup will take place from 9 a.m. to noon.

KHCB is recruiting volunteers and local sponsors for the cleanup, which will take place at several locations throughout the county.

Every year, thousands of animals are entangled in or ingest debris, which often results in their death. Your efforts can help save many animals from this fate – one that is caused by our carelessness. Crime, property values, and health and safety hazards also are directly related to litter.

Last year, almost 1,000 volunteers picked up more than 81,515 pounds, which is the equivalent of about 30 adult male African elephants. We hope to have an even greater turnout this year and make a bigger impact.

For more information on how to get involved with the Great American Cleanup, call (813) 960-5121 or visit our web site at www.khcbonline.org.

WHAT IS PUBLIC POLICY EDUCATION?

The Public Policy Education Program of the Cooperative Extension Service was created to promote an increased understanding of public issues, the public policy-making process, and strategies for effective participation. The principal objective of PPE is to educate both citizens and decision-makers so they can influence and make better informed policy choices. Public Policy Education assists learners as they evaluate information, examine values, explore alternatives, study consequences and make informed choices.

In 1999, the National Public Policy Committee of Land Grant Universities named the Hillsborough County PPE the nation's

Outstanding Public Issues Education Program.

Teaching methods include workshops, seminars, collaborative partnering, planning committees, and experimental activities such as tours and exhibits. PPE issues include: Water Issues, Hunger & Food Safety, Civic Engagement and Community and Leadership Development.

For more information on Public Policy Education, contact Michael McKinney of the Hillsborough County Cooperative Extension Service at 744-5519 ext. 107, or email him at mfmckinney@mail.ifas.ufl.edu.

Classes About Home Construction & Remodeling



Hillsborough County Extension classes offer residents the opportunity to learn from the experts and ask questions before they build a new home or start a remodeling project. Residents can

learn how to improve the quality of their homes and increase energy and water efficiency and termite resistance by attending. Speakers include a building contractor, an entomologist, and a Tampa Electric Energy Analyst.

Anatomy of a Home: Buy Green and Save is a class designed to teach homebuyers about features that will make a home more energy and water efficient. The program covers construction of a house from start to finish, information on how to make a home more energy and water efficient, termite resistance, and basic information about landscape designs that work best in our region. The classes are scheduled for March 13, May 15, and Oct. 16.

Secrets of Successful Remodeling is a class that can help homeowners learn how to start a remodeling project. The class will help homeowners learn how to plan a remodeling project, about features that can be added to a home to increase energy and water efficiency, how to avoid termite problems, and about utility incentive programs that can help decrease the cost of energy upgrades. The classes are scheduled for April 17, June 5, and Sept. 18.

Participants will receive a free copy of *Building, Buying, or Remodeling Your Florida Home: A Guide to Energy and Water Savings* (\$10 value). Book distribution will be limited to one per household and a person must attend the class to receive the book at no charge.

All classes are scheduled from 9 a.m. –12:30 p.m. at Hillsborough County Extension office in Seffner, 5339 County Road 579. Seating and materials are limited, so pre-registration is required. The number for phone registration is (813) 744-5519, extension 137 or register online at <http://hillsboroughfcs.ifas.ufl.edu/>.

For persons with disabilities requiring special accommodations, please contact Lisa Leslie at 813-744-5519 x.137 at least five working days prior to the program, so proper consideration may be given to your request.



www.PLAN2025.org

Launched to Involve Public in Plan Updates

The Hillsborough County City-County Planning Commission and the Metropolitan Planning Organization for Transportation are taking extraordinary steps to ensure that the public has ample opportunity to provide input in the update of the individual comprehensive plans that guide growth and development and the 2025 Long Range Transportation Plan. The shared public input process has been dubbed Plan 2025 by both agencies.

The agencies launched a website, www.PLAN2025.org, to enable the public to access complete information about the process of updating the plans, learn how they can provide input and view the results from a series of public input meetings that will be held around the county. The agencies have partnered with the Tampa Tribune to develop a four-page, full color tabloid summarizing the plan update processes and showing a map and schedule of all public meetings related to them. The tabloid was inserted in every Tampa Tribune in Hillsborough County on January 15. Another partnership with the Hillsborough County School District will ensure that each of the more than 174,000 children in public schools will receive a flyer to take home to inform parents of the public meeting schedule and opportunities for their input in the process.

"Each local government adopts a comprehensive plan that is dynamic and must be updated periodically according to state law," explained Robert B. Hunter, FAICP, Planning Commission executive director. "These plans as well as the 2025 Long Range Transportation Plan, affect the quality of life in a community and guide elected officials in making financial decisions that enable them to provide needed services. It is vitally important that the updates reflect changing community needs and values as we move closer to the year 2025 when Hillsborough County's population is expected to increase to more than 1.4 million people. That is why we have forged partnerships with others who have vested interest in ensuring that the plans reflect the issues of concern to the majority of those with a stake in Hillsborough County's future."

Once community issues are identified, the Planning Commission will submit Evaluation & Appraisal Reports to the individual local governments for transmittal to the Florida Dept. of Community Affairs. A series of public hearings will follow to adopt formal changes to the four Comprehensive Plans.

The Metropolitan Planning Organization will collect input on transportation issues to update the 2025 Long Range Transportation Plan, a package of transportation projects that are considered needed and affordable, looking at funds available by 2025. The MPO Board will adopt the update by the end of 2004.

Anyone with an interest in Hillsborough County's future is encouraged to attend the remaining public input meeting that is most convenient. The format will be facilitated small group discussions to determine top issues and their importance. All remaining meetings will be held from 6:00-8:00 p.m. at the following locations:

- Sun City Center/Ruskin - Tuesday, March 30, East Bay High School Cafeteria, 7710 Big Bend Road, Gibsonton.
- Central Tampa - Monday, April 19, Blake High School Cafeteria, 1701 N. Boulevard, Tampa.
- South Tampa - Monday, May 3, Robinson High School Cafeteria, 6311 South Lois Avenue, Tampa.

For more information on the comprehensive plan updates, contact Chris Waldman at (813) 273-3774, ext. 350. For more information on the 2025 Transportation Plan update, contact Beth Alden at (813) 273-3774, ext. 318.

The Hillsborough County City-County Planning Commission is the official land planning agency responsible for coordinated, long-range planning throughout Hillsborough County, including the cities of Tampa, Plant City and Temple Terrace and the unincorporated areas of Hillsborough County. The Planning Commission is comprised of ten laypeople appointed by the local governments for four-year terms.

The Hillsborough County Metropolitan Planning Organization for Transportation is a transportation policy-making board comprised of local government elected officials and transportation authority representatives. The MPO is responsible for establishing a continuing, cooperative and comprehensive transportation planning process for Hillsborough County, according to federal and state laws.

OWNERS OF BITING DOGS BEWARE!

The new year brings new changes to Hillsborough County's Animal Ordinance. The changes, which apply to animals that have bitten, chased or threatened people, companion animals, or livestock without provocation, came about because of the nearly 1,800 animal bites that were reported to Hillsborough County Animal Services in the past year.

DANGEROUS DOGS

One classification, dangerous dogs, applies to dogs that have aggressively bitten, attacked, endangered, or inflicted severe injury on a human being without provocation.

Dangerous dogs already were required by ordinance to be spayed or neutered, and Florida Statutes have other requirements. The new requirements in Hillsborough County's ordinance are:

- Obedience training by approved instructors and training on being a responsible pet owner.
- An annual health examination and micro chipping of the dog.
- A minimum of two inspections of the animal and its living area by Animal Services' investigators each year to ensure continuing compliance.
- Standardized signs posted at specified intervals along the fencing in addition to all entrances to the property. Signs will include pictures to deter children and can be obtained from the department.
- A physical control device such as a passive head restraint collar or harness recommended by the department. The statutes already require that, when outside its proper enclosure, a dangerous dog must be muzzled, restrained by a substantial chain or leash, and under control of a competent person.

The changes also include notifications:

- Neighbors can be notified about the dangerous dog.
- Hillsborough County has set up a website listing the dangerous dogs and giving information about them, such as their address and description.

Fee Change:

- The fee for registering a dangerous dog has increased to \$500. Before the ordinance change, that fee was \$250. Currently more than 50 dogs are registered as dangerous in Hillsborough County.

ANIMALS WITH DANGEROUS PROPENSITIES

The ordinance also deals with companion animals that have inflicted a minor bite once, chased or threatened people, companion animals, or livestock without provocation. Fines for an initial attack will be \$450 (formerly \$200). The fine will be reduced to \$25 if the owner provides proof of each of the following prior to the citation's hearing date:

- A graduation certificate from obedience training approved by the Dept..
- A current health examination from a veterinarian.
- Proof of spay/neuter, either prior to or after the incident.
- Microchip registered to the owner at his current address.
- Viewing a responsible pet ownership video at Animal Services.

The owners will also be issued a letter of "Dangerous Propensities" which would serve notice that, if another incident occurs due to their negligence and depending on the circumstances, they could be charged criminally.

Not every animal fitting this description would be placed here - if an attack is of sufficient magnitude, some will be placed under investigation as a Dangerous Dog.

OTHER FEE CHANGES

Rabies Tags: Because animals that are not spayed or neutered add to the pet overpopulation problem and have a greater incidence of aggressive tendencies, the current rabies tag fee of \$20 has increased to \$30 annually.

Impound Fees: if the animal is sterilized and is vaccinated, wearing current tags:

- First Offense -- No fee (No change.)
- Second offense -- The charge is \$100.
- Third offense -- The charge is \$150.

If an unvaccinated animal is picked up and vaccinated before it leaves the shelter, the vaccination fee now is \$10 and a per-day boarding fee of \$8 will be charged.



Don't Forget About the ONR Mini-Grant Programs

Applications from associations in the *unincorporated county* are being accepted on a continuous basis for the following mini-grant programs until funding is exhausted:

- Neighborhood Cleanup Grants**
- Tree Planting Grants**
- Low Volume Irrigation Grants**

The 2005 Neighborhood Mini Grant Applications will be available March 29, 2004.

For more information call 727-5860 or visit www.hillsboroughcounty.org/onr.



Spotlight on Our Neighborhoods!

Buckhorn Estates Informational Sign Dedication

Commissioner Ronda Storms and Buckhorn Estates President Kevin Dorsey thank everyone involved for their help in the informational sign project.



One of four informational signs at each of the Buckhorn Estates entrances



Buckhorn Estates residents at the dedication despite some inclement weather.

Air Potato Party

Twenty volunteers from the Boy Scout Pack #246 (Woodbridge Elementary School) and the Town 'N Country Youth Council picked up an estimated 2,250 air potatoes along the ditch north of the Town 'N Country Greenway and west of Webb Road on Saturday, February 28.

The air potato (*Dioscorea ssp.*) is a non-native invasive herbaceous vine that can grow up to 60 feet, covering trees and shrubs. Bulbils, or air potatoes, range from pea size to 5 inches across. They are prolific reproducers from large numbers of aerial tubers. They can grow up to 4 feet a day. The trees they cover can eventually die or fall due to the weight of the aerial tubers.

Boy Scouts helping out were Jacob Carazzo, Alex Lloyd, Jesse Lloyd, Rafael Torres, Sean Vennett, Michael Villarreal. Boy Scout Leaders were Toni Lloyd, Miguel Villarreal, Mark Vennett. Family members of the Boy Scouts helping out were Judy Garrelts, Andre Torres, Rafael Torres, Sherry Vennett, Alessandra Villarreal and Sandra Villarreal.

Youth Council teens sharing in this environmental effort were Thomas Coverson II, Aleena Lopez and Brittany Meadors. Bob Hood from the Adult Board of the Youth Council pitched in.

Hillsborough County Parks, Recreation and Conservation Trail Manger, Tina Russo's staff transported the air potatoes to the Hillsborough County Transfer Station on Linebaugh Avenue where they were incinerated.

Hillsborough County Road Maintenance, West Service Unit Manger, John Newton had 12 of his workers cleaning out trash in the area earlier in the month so that the youth could find the air potatoes. They removed 15 truck loads of debris.

In December the Youth Council helped plant 178 slash pine saplings along the greenway and in January Green Thumb Nursery planted 25 - 15 gallon live oaks. The Town 'N Country Park Home Owners Civic Association received a \$2,500 tree grant from the Hillsborough County Office of Neighborhood Relations for the live oaks.

All of this is in anticipation of the extension to the greenway opening later this spring.

RECEPTION TO HONOR ARTIST, PATRON AND PUBLIC ART

The Hillsborough County Board of County Commissioners and its Public Art Committee, in conjunction with the Tampa Museum of Art, are pleased to invite all residents of Hillsborough County to an art reception on Tuesday, April 5 at the Tampa Museum of Art, from 8:00 a.m. – 9:00 a.m. The **free reception** is open to the **public**, and will feature sculptor Audrey Flack visiting here from New York City.

Commissioned by the County Commission through its Public Art Program, the sculpture entitled *Bella Apollonia* will be dedicated to one of the founding members of the County's Public Art Committee (PAC), Louise Kotler. A founding member of the PAC since the inception of the County's Public Art Ordinance in 1989, Kotler was a dedicated member of that committee and volunteered her service for 8 years. She was also on the Tampa Museum of Art Board, and was active as a volunteer appointed to the State of Florida Arts Council. Additionally, both Louise and her husband Arnold Kotler supported the growth of the visual and performing arts with generous financial and in-kind contributions. When Louise Kotler died in 1997, the PAC and the community were saddened by the loss of a generous patron of the arts.

The County's sculpture was installed at the Museum in June 2003. The bronze figure, resembling a Greek goddess, took more than two years to complete, and was the result of a series of visits by the artist to the Museum, followed by sketches and models which were reviewed by the Public Art Committee and other art professionals and citizens. *Bella Apollonia* (the Art Muse) was inspired by the Greek and Roman antiquities on display at the Tampa Museum of Art as well as paintings, music, architecture, literature and poetry.

Named after Apollo, the Greek God of the Muses, this feminine version (*Apollonia*) presents a classic design with contemporary style," said artist Audrey Flack. "The artwork stands with one foot on a giant paint tube, her palette replete with brilliant dabs of colors. She holds brushes high in a triumphant position, as if to say 'Art conquers all,'" Flack continued. A bronze book inscribed with the artist's words is at the base of the sculpture stating "*Art arrives on the wings of the muse, it restores the soul, it heals the heart, it enlivens the mind, and it makes life more livable.*"



Well known since the 1970s for her photo-realist paintings, more than 15 years ago artist Audrey Flack turned to sculpture for her primary media and has completed prestigious public art installations for the City of Rock Hill, South Carolina, and for the Howard H. Baker, Jr. Federal Courthouse in Nashville, Tennessee. Flack's *Islandia* figure is in the permanent collection at the Harn Museum in Gainesville, Florida, and *Galatea* is in the City of South Pasadena's signature city park. Her art is in numerous prestigious museum collections including the Museum of Modern Art in New York City.

Hillsborough County Public Art Committee Chairman Catherine Cottle said, "The Tampa Museum of Art is an appropriate place for this sculpture because the Museum serves the entire area with outstanding exhibitions and educational programs for youth and lifelong learners. The County decided to lend the sculpture to this very public place for all of the residents and many visitors to see. The exciting artwork fits in well with both the contemporary and antiquity themes of the Museum, and will be displayed on long-term loan."

"I am pleased that the Art Muse is being dedicated to a greatly respected art patron," said Flack.

Emily Kass, director of Tampa Museum of Art said, "We were delighted when the County's PAC invited us to be the repository for this work. Audrey Flack is a major artist and we are honored to share this extraordinary example of her sculpture with the public." Flack's work was previously exhibited at the Tampa Museum of Art in the 1999-2000 exhibition: *Contemporary Classicism*.

Located at 600 North Ashley Drive in downtown Tampa, The Tampa Museum of Art is open to the public 10 a.m. - 5 p.m. Tuesday through Saturday; the third Thursday of each month from 10 a.m. - 8 p.m.; and from 11 a.m. - 5 p.m. on Sunday. The Museum is closed on Mondays. Admission is \$7 for adults; \$6 for seniors 65+ and military; \$3 for students with ID and children 6-18. Children under 6 are admitted free.

The public is welcome to see this sculpture (and the rest of the Museum, as well) free of charge every Saturday from 10 a.m. to noon, and on the third Thursday of each month from 5 - 8 p.m. Members are always admitted free.

To add to a week of art celebrations, Flack also is being hosted by the University of Tampa and Scarfone-Hartley Galleries, while she is participating as the artist in residence at UT's Studio-f. On April 14 at 11 a.m., Ms. Flack will present a gallery talk at UT Scarfone-Hartley Gallery, which is also **free to the public**. The Studio f OPEN HOUSE PRESENTATION OF MONO-PRINTS is scheduled for April 16, 5 p.m.- 7 p.m. All high school and college students, educators, art historians, writers, and the public- at -large are encouraged to attend this educational free event.

For more information, contact Jan Stein, Hillsborough County Public Art Program Coordinator, 276-2536; Lani Czyzewski, Public Information Officer, Tampa Museum of Art, 274-870; or Dorothy Cowden, Director UT Scarfone Hartley Gallery, 253-3333.

Current Zoning Section Maps

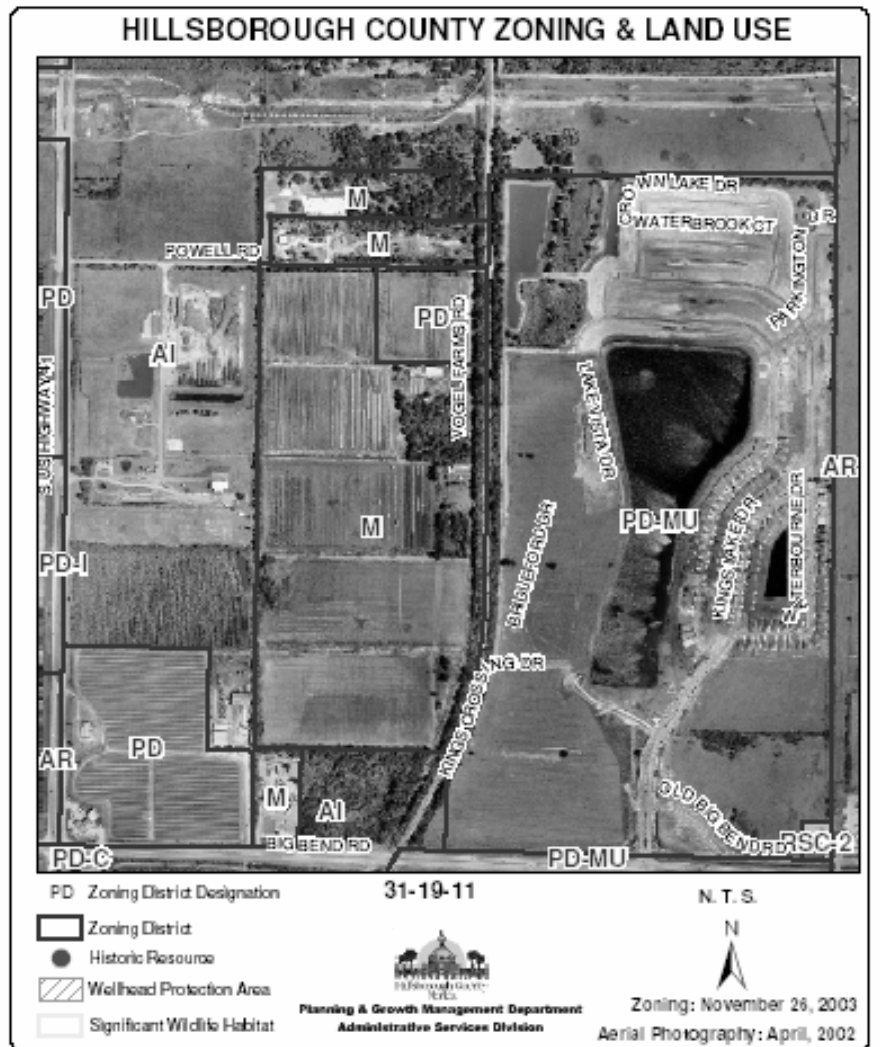
Available NOW
On The Web
For
Zoning & Land Use
Research

Answers questions relating to ...

1. In what Zoning District does your property reside?
2. Is there a Historical Landmark near your property?
3. Does your property reside in a Wellhead Protection Area?
4. Does your property reside near a Significant Wildlife Habitat area?

View and Download ONLINE

<http://www.hillsboroughcounty.org/pgm/gis/zluamaps.html>



Don't Miss "Good Neighbors!"

The second installment of Hillsborough County's Office of Neighborhood Relations informational program "Good Neighbors" hosted by Neighborhood Relations Officer Shelley Blood will air this April.

Don't miss the opportunity to see what Hillsborough County and neighborhood association have been working on recently. For more information on dates the program will be televised, check out our website at www.hillsboroughcounty.org/onr.

Happy St. Patrick's Day



INVASIVE SPECIES AWARENESS



Brazilian pepper *Schinus terebinthifolius*

Excerpt from “Identification and Control of Non-native Invasive Plants in the Tampa Bay Area,” available from the Invasive Species Task Force (ISTF)

Identifying Characteristics

Brazilian pepper is a large, multi-trunked shrub or tree with arching and crossing branches; can grow to 40 feet tall, forming thickets. Leaves are evergreen, glossy green and alternate. Often toothed, leaves are compound with 3 to 11 (usually 7 to 9) leaflets. Leaflets vary in shape, but are generally found elliptic to oblong and 1 to 2 inches long. Crushed leaves smell peppery or like turpentine. Female plants form small white flowers almost every month of the year, but most profusely in the fall season, producing clusters of red berries. ***Brazilian pepper is a relative of poison ivy and poison sumac. Sap may irritate skin and pollen may cause respiratory irritation.***

Habitat

Will readily invade residential and urban landscapes. Invades undisturbed areas—hardwood hammocks, mangrove forests and pinelands, as well as disturbed areas such as roadsides, ditches, and fallow farmland.

Growth Habits

Found especially in moist, organic soils, but will grow in any soil type. Is salt-tolerant, able to withstand flooding, fire and drought. Sprouts easily from trunk and roots. Seeds spread by wildlife (bird and small mammals) consumption.

Control Methods: Cut-Stump or Basal Bark

Use gloves when working with Brazilian pepper! Avoid dropping berries—collect and dispose of in plastic bags. If possible, schedule removals in late summer or early fall before new berries have ripened. Note: Even the green berries will ripen after cutting the branch. If handcutting, dig up as much of the root system as possible. Larger trees should be cut to the ground and stumps treated immediately with triclopyr ester. Basal bark applications are also effective.

Replacements

Necklace pod (*Sophora tomentosa*), Dahoon holly (*Ilex cassine*), Walter’s viburnum (*Viburnum obovatum*) and Wax myrtle (*Myrica cerifera*)

For more information, please contact the Invasive Species Task Force (ISTF) at 813-671-7754.



NEIGHBORHOOD PROJECTS

Why Do Neighborhood Projects?

Promote Your Association

A neighborhood project or special event is an excellent opportunity to promote your association to local businesses, interest groups and even the residents in your own neighborhood.

Raise Funds

Garage sales, barbecues, and bake sales are just a few examples of effective fundraisers.

Improve Neighborhood Image

Whether a project addresses litter control, peeling paint, park clean up, weatherization, or crime prevention, improvements made to a community symbolize to residents and visitors alike that people care about their neighborhood.

Meet Your Neighbors

The social aspects of a neighborhood project can serve as the catalyst for a strong community group. Block parties, activity clubs, festivals and parades are just a few ways to meet the neighbors you have waved hello to for years but never actually met. It is also a super opportunity to welcome new neighbors into the community.

A Good Way to Have Fun

Neighborhood block parties, festivals and cookouts are a source of entertainment, and a fun time to bring people back to the association and the neighborhood! The more often a neighborhood gets together for fun, the more unified they will be when an issue arises.

Promote a Sense of Community

A sense of community is developed when residents come together by working on neighborhood projects. Through the process of planning, implementing, and maintaining projects, common goals, a sense of belonging, and being a part of your community are developed and strengthened.

Take Ownership of Your Neighborhood

By taking responsibility for planning, implementing, and maintaining projects in your neighborhood, residents will take more initiative not only in preserving the integrity and quality of that project but the entire neighborhood as well. If neighborhood residents feel that they have something at stake, have some control over the outcome, and take some responsibility for the outcome of projects and issues in your neighborhood, you will have established a powerful base from which positive changes can be made.

NEIGHBORHOOD PROJECTS

Starting Neighborhood Projects

Neighborhood projects are a good idea, but how do you start?

- Check with your neighbors and active members of your neighborhood group to find out what kind of projects they would support.
- If your neighborhood has established goals, make sure the project is consistent with those goals. If your neighborhood has not established goals, this might be a good first step.
- Ask the members of your association what type of activities they would like to have.
- Consult your Neighborhood Coordinator at the Office of Neighborhood Relations, 272-5860, for suggested projects and information on relevant programs and services available through the County.

- Identify the types of skills and resources that are available through your association - gardeners, good cooks, carpenters, sales people, artists, etc.
- Identify resources available through area businesses, including contributions of products, volunteers, services, technical assistance and discounts.
- Identify those who will be able to work at an event and the times they will be available.
- Involve the entire community. Reach out to youth, seniors, or other members of your neighborhood that may not be involved and get their input. A project that meets the needs of all of your neighbors will help them feel part of the project and it will encourage them to become more involved.
- Determine what resources the neighborhood can contribute to the project. A neighborhood's greatest resource is its residents and the commitment and enthusiasm that they can bring to a project. A project that includes sweat-equity is a value-added project.
- Plan ahead on your neighborhood projects. If grant money is available, don't wait until the last minute to plan and submit your project. Start planning now for next year's project. Careful planning will be apparent in your proposal.
- Identify others who may be of assistance in implementing your project. Boy or Girl Scout troops may be looking for community service projects. There may be an opportunity to use youth who are required to provide community service for legal reasons. By including these youth in your project, you may get the manpower that you need, and it can provide them with a productive and positive experience in giving back to the community.

Suggested Neighborhood Projects and Activities

- Neighborhood garage sale
- Neighborhood festivals, block parties, barbecues, art exhibits, crafts, clown face painting for children, hot dog and drink sales, games, etc.
- Ice cream social
- Pancake breakfast fundraiser
- Home improvement demonstrations - wallpapering, stenciling, house painting, tile laying, landscaping, etc.
- Holiday house decorating.
- Clean Up, Green Up – do a neighborhood cleanup using County Cleanup grant funds.
- Neighborhood Watch - organize the community by groups to have neighbors get acquainted, discuss common problems, and help protect their neighborhood by being aware of unusual or suspicious activity.
- Adopt a local park, do a clean up and plant and maintain a flower bed.
- Get to know the neighborhoods around you by having a multi-neighborhood picnic.
- Create a directory of names, addresses, and phone numbers of neighborhood residents and provide a copy to everyone in the neighborhood.
- If there are elderly residents in your neighborhood, set up a group of volunteers to visit them around holidays or other times of the year. Include a small basket of goodies to leave as a reminder of your visit.

- As a neighborhood group, adopt a family for the holidays. There are many organizations that can help you find a family that needs assistance.
- Are there neighborhood residents who are unable to keep up with some of the maintenance on their property? Your neighborhood might want to form a neighbors helping neighbors committee. It is amazing how fast a group of volunteers can fix a fence, put up storm windows, or even paint a house.
- Start a neighborhood garden – be sure to involve neighborhood youth
- Establish a service exchange (services might include teaching a particular skill, child care, home or auto repairs, gardening, etc).
- Establish a neighborhood tool “lending library.”

- Reflective or contrasting materials should be used, to be visible day and night, or should be illuminated.

If you are unsure of your address, or have never been issued one, call to confirm the correct address of your property. Call the County Streets and Addresses Unit at 744-5860 or the cities listed below.

Violators will receive a non-compliance notice, giving them 30 days to post their address correctly. Failure to do so could result in referral to the Code Enforcement Board, with possible fines up to \$50 per day or a lien against the property.

Curb painting is not recommended. Addresses on curbs can be blocked by parked cars or standing water, they are not easily seen at night or from a distance, and wear away quickly. Curb painting alone will not bring your building’s address into compliance with the County’s ordinance.

The residents of individual cities may have slightly different regulations which may affect the size and type of letters or numbers to use. Check with the following offices for your city requirement:

- **Temple Terrace** - Community Development, 989-7126
- **Plant City** - Building Department, 659-4200
- **City of Tampa** - Housing and Community Development, 274-8725

For more information about 9-1-1, contact the Hillsborough County 9-1-1 Administration Office at 744-5911 or the Streets and Addresses Unit at 744-5862

CAN YOUR HOME BE FOUND IN AN EMERGENCY?

Your address is not just for the mail carrier! When lives and, property are at stake, every second counts. A poorly marked address can delay emergency responders and could mean the difference between life and death. Help 9-1-1 and the emergency agencies—fire, police, and ambulance— to locate you in an emergency by posting your address correctly.

How to protect your life and home:

- Address numbers should be affixed to the building front and particularly if you live at the end of a long drive, to a separate structure, such as the mailbox (on both sides), a fence, wall or post.
- Numbers should be large enough to be clearly visible from the street or roadway while traveling in either direction at the posted speed limit.
- Letters or numbers should be kept clear of obstructions such as shrubbery.
- They should be made of durable and weather-resistant materials, in a color contrasting to their background.
- Remember to check your address numbers regularly for obstructions or damage.

In Hillsborough County it’s the law:

The Street Naming and Numbering Ordinance (87-06) states that all homes and businesses must display their correct address. Failure to comply can result in referral to the Code Enforcement Board, with possible fines up to \$50 per day or a lien against the property.

Commercial or business properties:

Businesses must follow the same regulations as residential structures. In addition to posting the address on the building, businesses and commercial properties must follow the sign regulations:

- The County Sign Regulation (sec. 3.12.1.3.7) states that all commercial or business properties must display their address or address range on their sign or marquee.
- The owner or his agent, or the person doing the work on the sign, is responsible for seeing that the sign conforms to the regulations.
- The numbers should be large enough to be visible from the local street, traveling in either direction, while moving at the posted speed limit (at least 6” high).

Published by Office of Neighborhood Relations

505 E. Jackson St. Ste 308
PO Box 1110
Tampa, FL 33601-1110
272-5860

www.hillsboroughcounty.org/onr

Officer: Shelley Blood
bloods@hillsboroughcounty.org

Editor: Tony LaColla
lacollaa@hillsboroughcounty.org

Hillsborough Board of County Commissioners

Thomas Scott
Jim Norman
Kathy Castor
Pat Frank
Ken Hagan
Jan K. Platt
Ronda Storms

County Administrator

Patricia G. Bean
272-5750

Office of Neighborhood Relations

505 E. Jackson Street
P.O. Box 1110
Tampa, FL 33602



Serving Neighborhoods throughout Hillsborough County!

Office of Neighborhood Relations...

The Office of Neighborhood Relations is responsible for improving the County's relationships with its neighborhoods and communities by working internally with departments to improve county services, and externally with neighborhood and community groups, municipalities, law enforcement, and other state and local agencies affecting neighborhoods.

Talk to Your County Commissioners!

Thomas Scott, District 3, Chairman
272-5720

Jim Norman, District 5, Vice Chairman
272-5725

Kathy Castor, District 1
272-5470

Pat Frank, District 7 (Countywide)
272-5735

Ken Hagan, District 2
272-5452

Jan K. Platt, District 6 (Countywide)
272-5730

Ronda Storms, District 4
272-5740

Serving Neighborhoods Throughout Hillsborough County!