

HART: Moving Ahead

April 7, 2008

**Hillsborough County
Transportation Task Force**



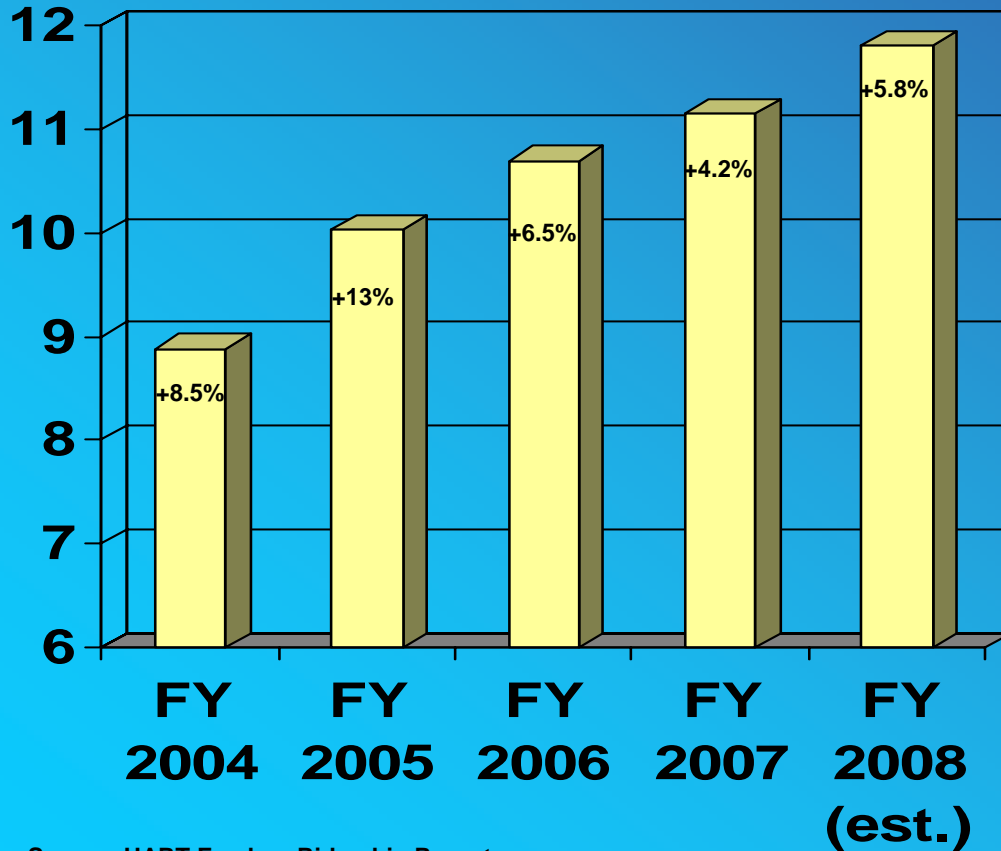
Vision

- Provide convenient access to transit throughout Hillsborough County
- Double ridership
- Best transit system of its size in the Country



Five-Year HART Bus Ridership

Ridership in Millions



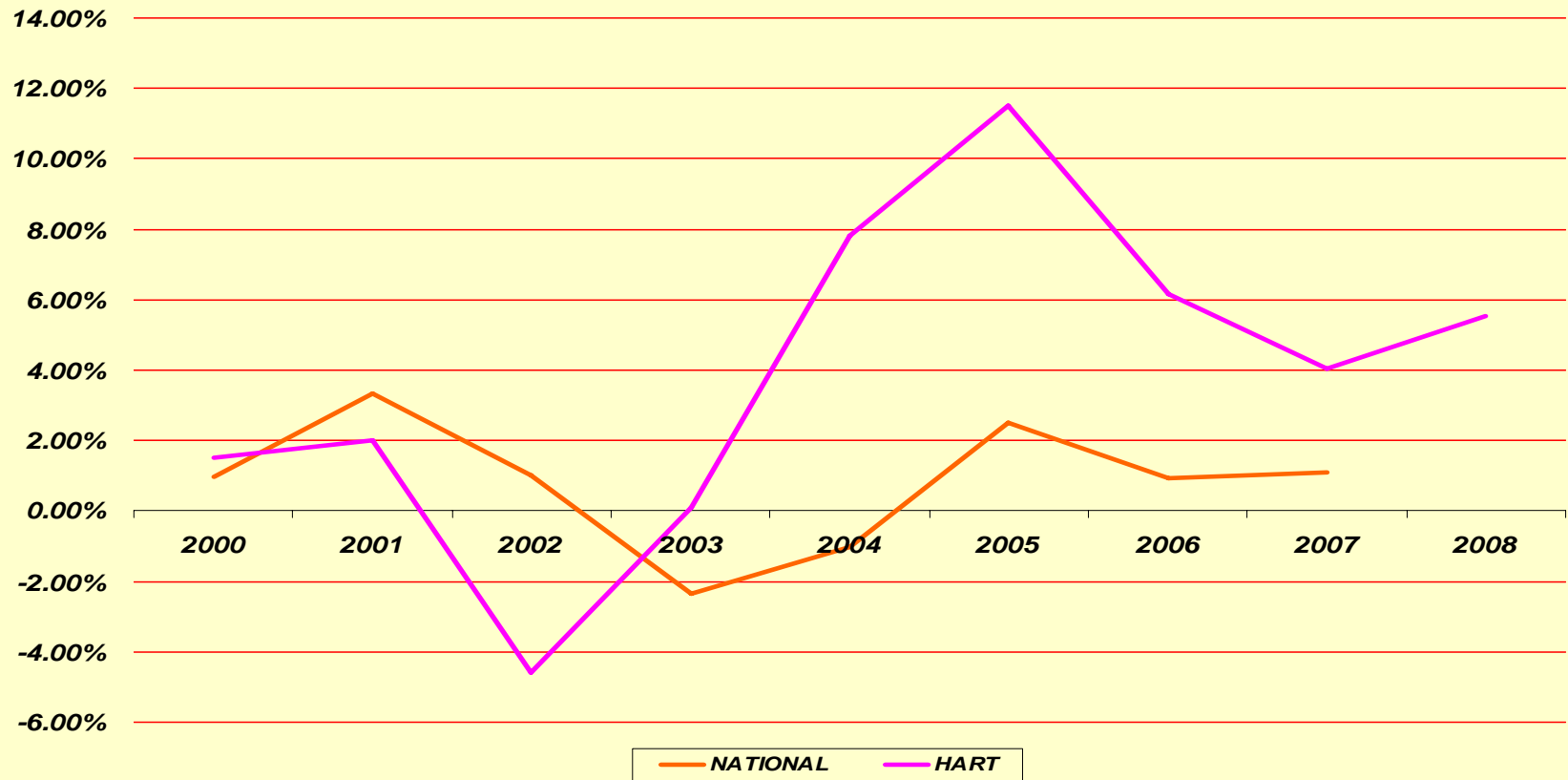
Source: HART Farebox Ridership Reports

- 25.5% HART ridership increase FY 2004 – FY 2007
- 8.9% HART increase 1st quarter FY 2008



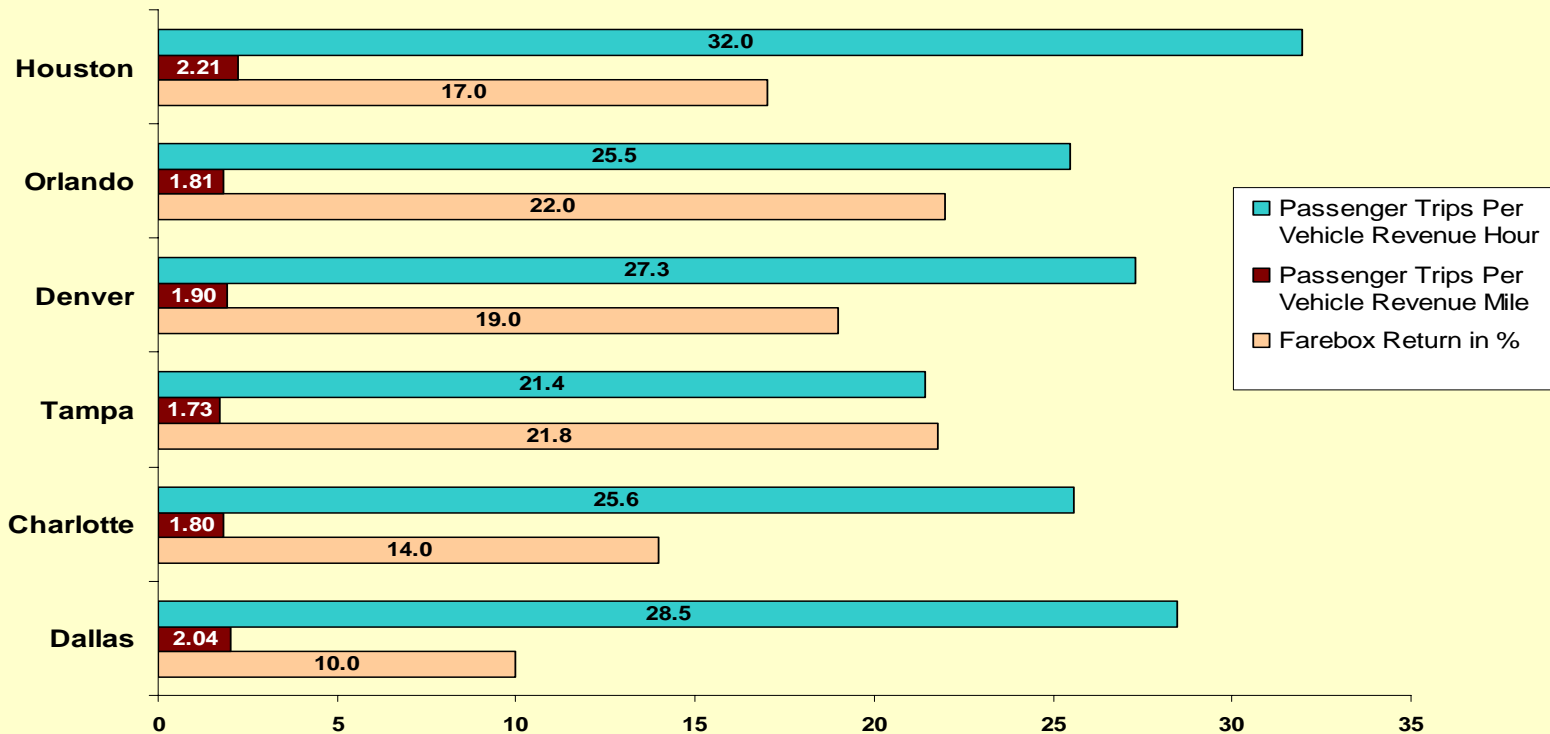
Peer Comparison – ridership trend

PERCENTAGE INCREASE/DECREASE IN RIDERSHIP FY 2000-2008



Peer Comparison – productivity

FY 2006 Performance Data for Select Cities



Fast Forward

- Deliver projects



- Enhance ridership
 - Faster trips
 - More frequent service
 - New transit services

- Secure additional funding



2008 Initiatives

- Service
 - New late night and weekend service
 - Revised downtown circulators: Green & Purple lines
 - Two Bus Rapid Transit (BRT) routes planned



2008 Initiatives – Funding

- HART – PSTA Joint Funding Task Force



- Streetcar
 - 20 year Business Plan
 - Capital funding plan for extension



2008 Initiatives – Funding

- Cost reduction strategies and trimming of less efficient services
- \$40M from County Transportation Task Force - BRT and park-and-ride lots

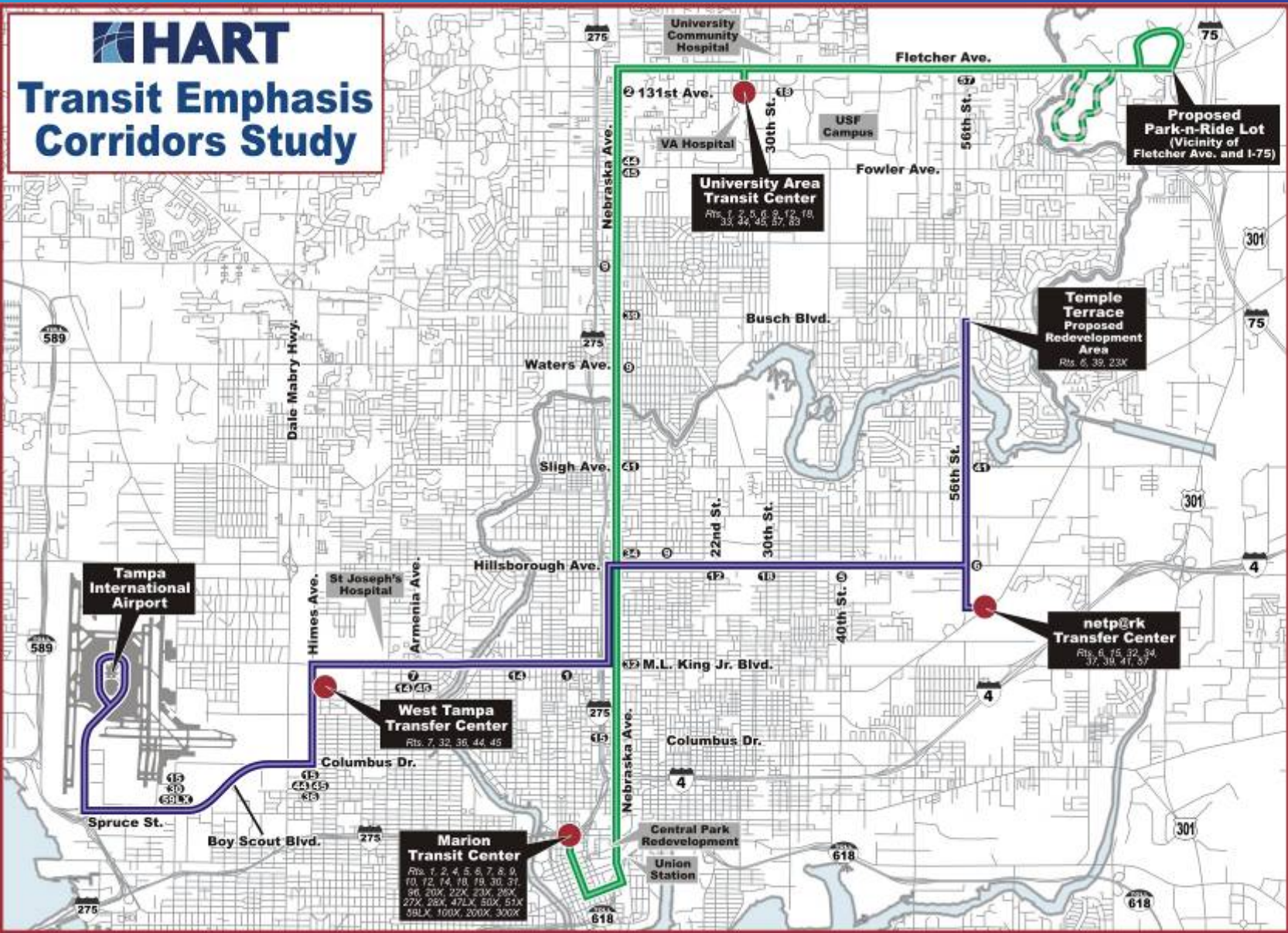


- Revenue Alternatives Task Force





Transit Emphasis Corridors Study



Recommended BRT Corridors

LEGEND

Corridors

- Nebraska/Fletcher (N-S)
- Hillsborough/M.L.K. (E-W)

Connecting Routes

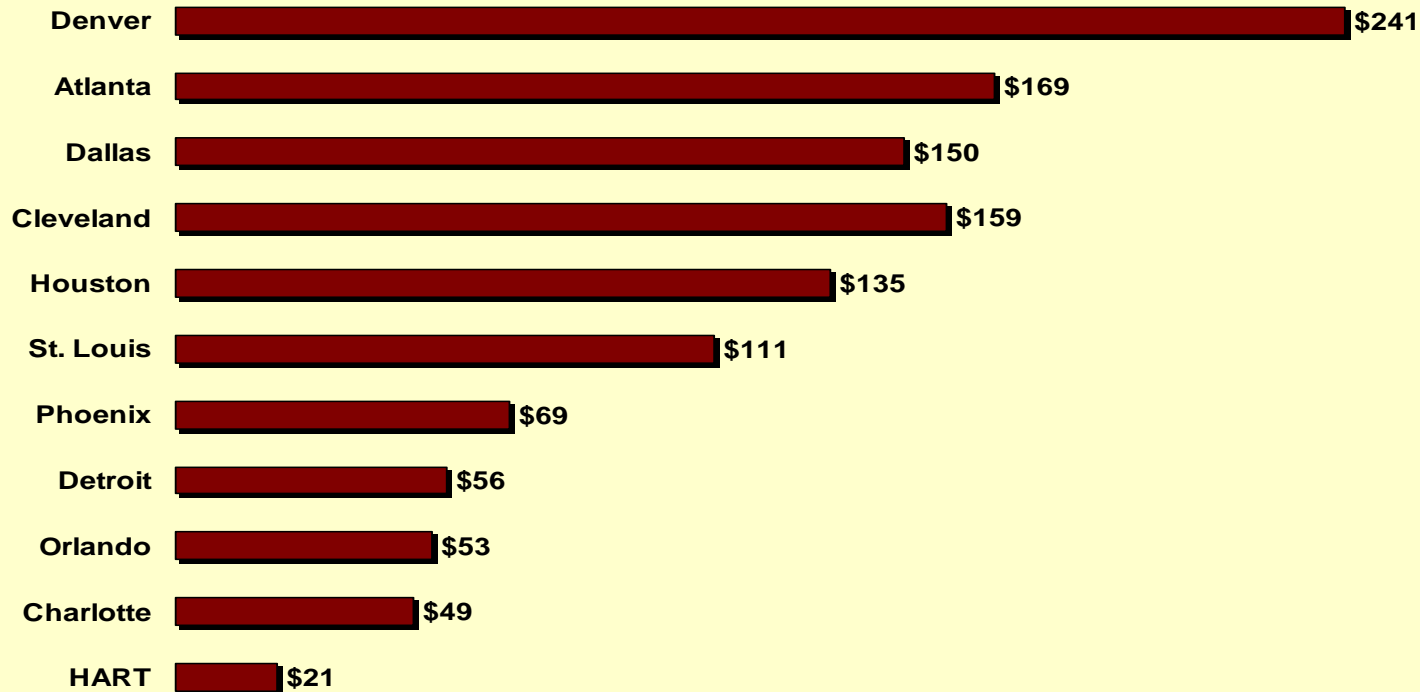


Recommended BRT Corridors Rev 03.08 11.31.07



Peer Comparison – per capita spending on transit

Per Capita Spending for Capital & Operating (1999-2003)



Sources: National Transit Data Base & U.S. Census



2008 Initiatives

- Facilities
 - New bus transfer centers opened
 - West Tampa and Northwest
 - Bus stop accessibility plan
 - NEPA approval secured for streetcar extension



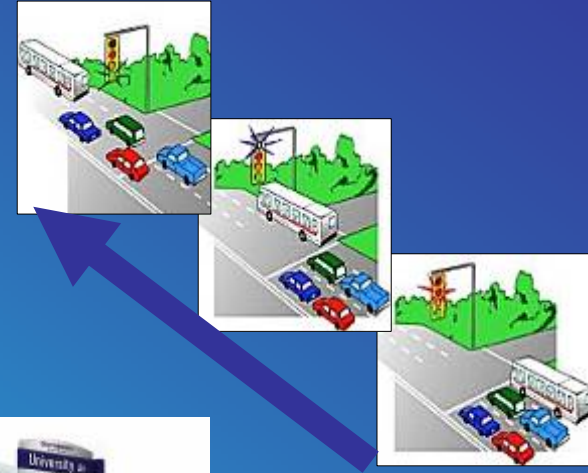
2009 Initiatives

- Enhanced Route 30 service: downtown – Airport
- Super Bowl transportation
- Pursue funding
 - East/West BRT – Federal Very Small Starts and State
 - New Bus Transfer Center at Tampa International Airport
 - Joint development
- New operations/maintenance facility – acquire property and initiate design
- Westshore and Downtown Tampa circulators



2009 Initiatives

- Construction underway
 - Streetcar extension along Franklin Street
 - BRT improvements along Nebraska and Fletcher
 - Bus stop improvements system-wide
 - Bus shelters, including shelter advertising program
 - Sidewalk and accessibility improvements



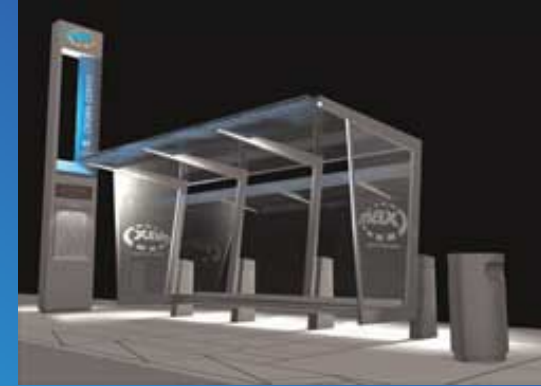
2010 Initiatives

- Streetcar extension opens
- New BRT service on Nebraska and Fletcher
 - 10 minute rush hour service
 - Supporting park-and-ride: I-75/Fletcher
- New Brandon park-and-ride lot
- Construction underway
 - East/West BRT and TIA Transfer Center
 - New Operations/Maintenance facility



2011 Initiatives

- East/West BRT opens
 - 10 minute service
 - TIA transfer center *



- Continued bus stop accessibility improvements
 - Approximately 75% of needed improvements completed

** Subject to Hillsborough County Aviation Authority and other approvals*



2012 and beyond

- Second operations/maintenance facility opens
- More service
 - ‘BRT Light’ Brandon, Florida Avenue
 - Flex service: Brandon, Temple Terrace, South County, Northwest County
 - New express services
 - Increased frequency system-wide
- Funding availability will be key determinant to service expansion



Making Transit Work Better in Hillsborough County

- Transit supportive development policies
- Partnerships
 - Other transit providers
 - TBARTA – importance of defined roles and responsibilities



Making Transit Work Better in Hillsborough County

- Multi modal approach to transportation
 - Intersection improvements, including signal timing
 - High occupancy vehicle lanes (HOV, HOT)
 - Pedestrian and bicycle improvements
 - Improved signage



Next Steps – Delivering on the Vision

- Provide enhanced service where it is most effective



- Build framework for light rail
 - Expanded bus service
 - Second operations/maintenance facility
- Increased funding

