

Hillsborough South County Transportation Plan

presented by

Ned Baier, AICP

Manager, Transportation and Land Development Review Division

Planning & Growth Management Department

Hillsborough County

and

Keli Paul, AICP

Cambridge Systematics, Inc.

in association with

Karen Simon

Simon Resources, Inc.

July 2007

Transportation leadership you can trust.

CAMBRIDGE
SYSTEMATICS



Overview

- **Background & Purpose of Study**
- **Study Process & Schedule**
- **Public Outreach Opportunities**
- **Existing Congestion**
- **Alternative Analysis**
- **Next Steps**



Background & Purpose of Study

● Previous Planning Efforts

- Hillsborough MPO 2025 Long Range Transportation Plan
- SouthShore Systems Plan
- Hillsborough County Corridor Preservation Plan
- Hillsborough County Constrained Roads Study
- Community Plans

● Purpose of this Study

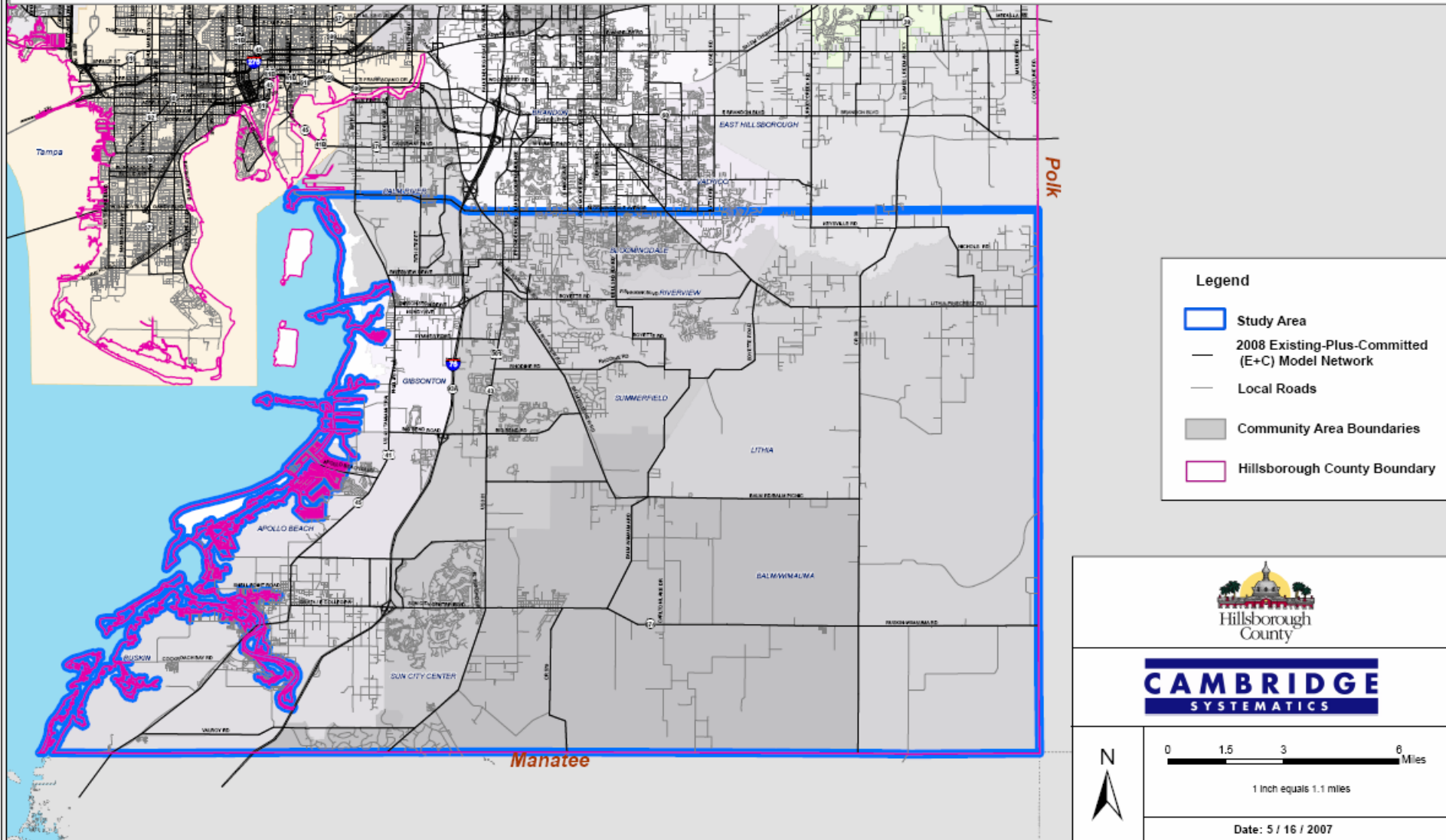
- Determine what transportation improvements will be needed in the South County study area to accommodate future congestion (estimated year 2050).
- Reserve right-of-way (ROW) for future improvements.



Background & Purpose of Study

Study Area

South County Transportation Plan Study Area



Study Process & Schedule

- **Established Technical Advisory Committee (TAC) and Project Advisory Committee (PAC)**
- **Developing models to estimate existing and forecast future traffic congestion**
- **Developing alternatives to test in model based on model results and input from the TAC, PAC, and the public**
- **Will test up to 3 packages of alternatives in the future year model**
- **Will present preliminary recommendations to TAC and PAC July 31st**



Study Process & Schedule

- Accelerated schedule with final recommendations due September 1st

Task	2007																					
	May					June				July				August				September				
	30-4	7-11	14-18	21-25	28-1	4-8	11-15	18-22	25-29	2-6	9-13	16-20	23-27	30-3	6-10	13-17	20-24	27-31	3-7	10-14	17-21	24-28
Task 1: Client Kick-Off Meeting			❖																			
Task 2: Advisory Committees		❖					❖							❖								
Task 3: Public Workshops												❖										
Task 4: Existing Conditions																						
Task 5: Future No-Build Conditions																						
Task 6: Alternative Analysis																						
Task 7: Final Recommendations																					❖	



Public Outreach Opportunities

- **County website**
 - <http://www.hillsboroughcounty.org/> (Upcoming Public Meetings)
 - <http://www.hillsboroughcounty.org/pgm/transportation/transystem/southcountytransplan.cfm>
- **Project Advisory Committee (PAC)**
- **Public workshops (July 17-18, 2007)**
- **Comprehensive Plan Amendment Process**
- **Board of County Commissioners**



Existing Congestion

- **East-west routes currently failing:**
 - **Big Bend Rd. from US 41 to I-75 and from east of US 301 to Balm Riverview Rd.**
 - **Symmes Rd. from I-75 to US 301**
 - **Gibson Dr. from I-75 to US 301**
 - **Fishhawk Blvd. from Bell Shoals Rd. to Lithia Pinecrest Rd.**
 - **Bloomingdale Ave. from west of I-75 to S. Dover Rd.**



Existing Congestion (Cont'd)

- **North-south routes currently failing:**
 - **I-75 from Manatee County Line to Sun City Center Blvd.**
 - **US 301 from Gibsonton Dr./Boyette Rd. north throughout County (beyond study area boundary)**
 - **Lithia Pinecrest Rd. from CR 39 to SR 60/Brandon Blvd. (beyond study area boundary)**
 - **Bell Shoals Rd. from Boyette Rd./Fishhawk Blvd. to E. Lumsden Rd. (beyond study area boundary)**

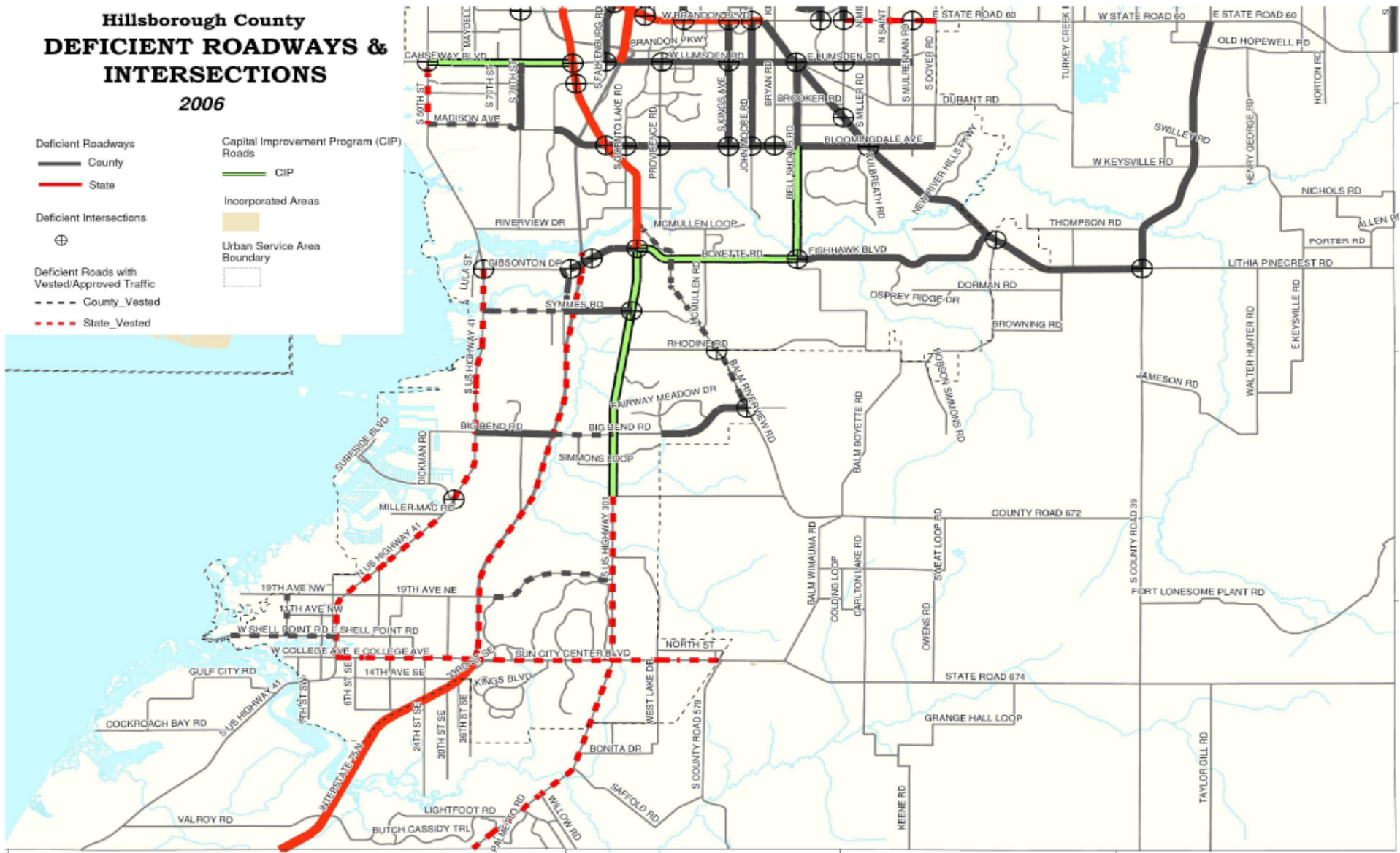


Existing Congestion (Cont'd)

Map of Congested Roads

Hillsborough County DEFICIENT ROADWAYS & INTERSECTIONS 2006

- Deficient Roadways
 - County
 - State
- Deficient Intersections
 - ⊕
- Deficient Roads with Vested/Approved Traffic
 - County_Vested
 - State_Vested
- Capital Improvement Program (CIP) Roads
 - CIP
- Incorporated Areas
 - Urban Service Area Boundary



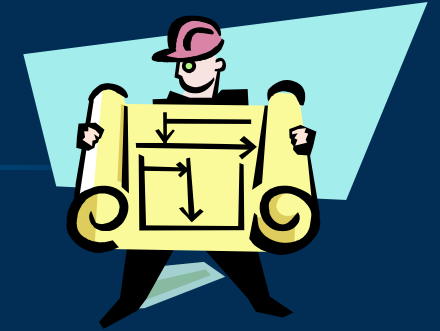
Alternative Analysis

- Work in progress
- PAC and TAC have provided initial input for potential projects to test during the alternative analysis phase
- **We want to hear from you tonight** on what you would like for us to test
- We will use future year congestion from our model currently under development to assist us with developing our alternatives



Alternative Analysis

Needs & Constraints



- **Needs**

- Additional east-west connectivity
- Address existing congestion and congestion expected due to future growth

- **Constraints**

- Environmental Land Acquisition Properties (ELAP)
- Water bodies
- Constrained roads (portions of US 41 & Sun City Blvd.)

Alternative Analysis

Other Considerations

- Safety
- Schools
- Future developments
- Alternative modes
- Other planning efforts (I-75, potential bypass, etc.)



Next Steps

- **Finish development of existing and future year models**
- **Compile projects into 3 packages of alternatives to test in model**
- **Develop preliminary recommendations based on model results and present to the TAC and PAC July 31st**
- **Finalize recommendations and submit by September 1st in time for next Comprehensive Plan Amendment process**
- **Publish final report by September 30th**
- **Once recommendations have been approved through the Comprehensive Plan Amendment and BOCC processes, the recommendations will be considered during the MPO's next LRTP Update.**



*Your comments are appreciated,
so please don't forget to fill out your comment form!*

Any Questions or Comments

