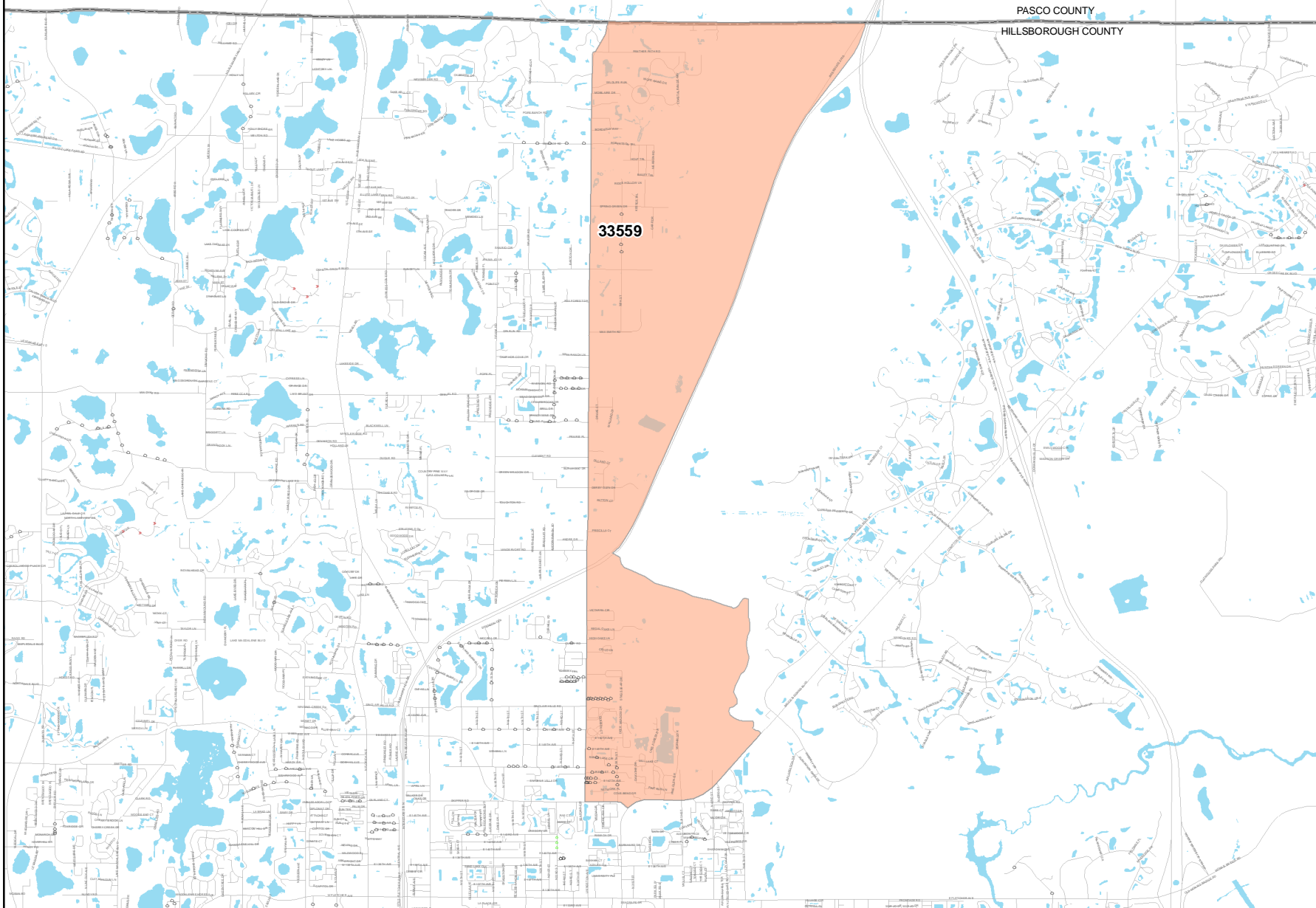




**Traffic Calming  
Devices Within  
ZipCode  
Boundary 33559**

**February 20, 2006**

STREET NAME	HUMP COUNT
30TH ST	4
E 147TH AVE	9
E 148TH AVE	1
E 149TH AVE	1
IRENE ST	3
LIVINGSTON PLACE APT	11
N 30TH ST	3
RANCH LAKE CIR	1



**SpeedHumps**

- » Flat -Top
- Parabolic
- ◌ Speed Cushion
- ⊕ Zipcodes
- Roads
- Lakes & Streams

Disclaimer:  
All data subject to change without notice.  
Although every effort has been made to  
insure the accuracy of the information  
presented herein, neither Hillsborough County  
nor the Public Works Department  
guarantees that it is error free.  
Intended for a visual aid, only, and not  
for determination of any legal extents, boundaries  
or any other legal determination.



1 inch equals 6,000 feet



Sources: Hillsborough County, City of Tampa