

# Commercial and Institutional Waste Reduction & Recycling in Hillsborough County

**Mitch Kessler**

Take the Green Lead Workshop

May 20, 2008



**kessler consulting inc.**  
innovative waste solutions

## Solid Waste Management in Florida

- Generates 36.8+ million tons of waste annually
- Commercial waste makes up 50-65% of the waste stream
- 1988 Florida passed Solid Waste Management Act
  - Recycling goal of 30% for communities >100,000
- 2008 Bill 7135 (Energy Bill)
  - Mandate 75% recycling rates by 2020
- Residential recycling prioritized



**kessler consulting inc.**  
innovative waste solutions

# Hillsborough County

- Integrated Solid Waste Management System
- Businesses Generate 60% of waste
- 30% recycling goal
- Mandatory yard debris separation
- Residential curbside recycling
- Recycling drop-off for commercial



kessler consulting inc.  
innovative waste solutions

# Why Focus on Commercial Waste?

- Over 100 million square feet of commercial and industrial building space
- Avoid disposal costs and generate revenue
- Over 65% of commercial waste is recyclable
  - 13+ million tons of commercial waste disposed annually
  - 70% is recyclable
  - 40% recovery = 3.6 million tons



kessler consulting inc.  
innovative waste solutions

## Residential vs. Commercial Recycling

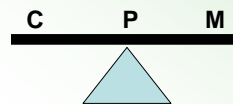
- Initial focus
- Government driven
- Target audience
- Built an infrastructure



kessler consulting inc.  
innovative waste solutions

## Who Are the Key Players?

- Businesses, industry, and institutions
- Government
- Service Provider
  - Collection
  - Processors
  - End-Markets



kessler consulting inc.  
innovative waste solutions

## Commercial Infrastructure

- Building Owner
  - Business owner
  - Tenants
- Property Manager
- Leasing Agent
- Maintenance and Cleaning Company
- Existing Solid Waste System



kessler consulting inc.  
innovative waste solutions

## Benefits

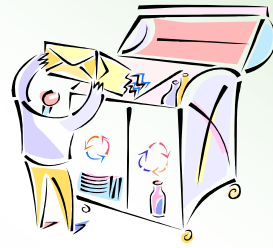
- Reduces waste collection and disposal costs
- Customer demand
- Reduces the burden on local landfills and waste-to-energy plant
- Conserves natural resources



kessler consulting inc.  
innovative waste solutions

## Obstacles

- After thought
- Infrastructure lacking
- Multiple players
- Conflicting objectives
- Cost of service



kessler consulting inc.  
innovative waste solutions

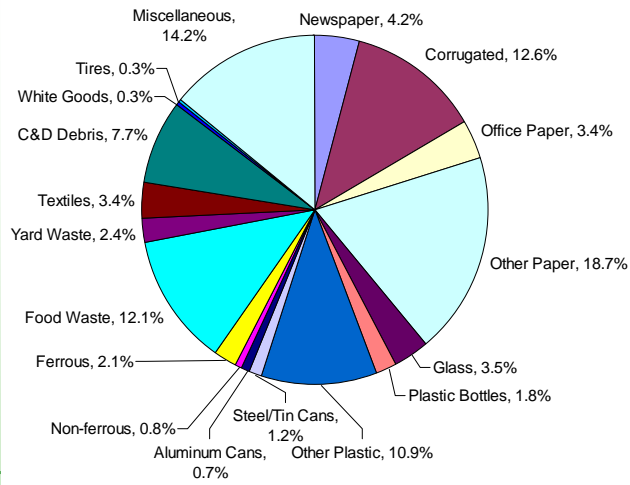
## What is Commonly Generated?

- Cardboard
- Office paper
- Pallets
- Supplies and packaging
- Beverage containers
- Electronics
- Fluorescent lamps
- Landscaping organics
- Construction & demolition debris



kessler consulting inc.  
innovative waste solutions

## Estimated Commercial Solid Waste Composition Pie Chart



## Commercial Recycling Program Variables

- Property's type, size and complexity
- Budgetary and staff resources
- Equipment and supplies needed
- Space and access limitations
- Janitorial service partnerships



## Steps to Development

- Define the objective and role of each party
- Assemble preliminary team
- Identify & quantify existing system
- Determine what is in the waste stream
- Evaluate waste reduction and recycling options
- Prepare cost benefit analysis
- Develop preliminary plan



kessler consulting inc.  
innovative waste solutions

## Steps to Development (cont.)

- Assemble Private and Public sector partners
- Budget and staffing needs
- Strategy/Target
- Policy changes and training
- Collection, processing, marketing
- Container needs
- Waste diversion goals, cost avoidance, and revenue potential



kessler consulting inc.  
innovative waste solutions

## Participation Buy-In

- Provide answers to needs of the Commercial Sector:
  - Why participate?
  - What will the program cost?
  - What will it save the organization?
  - What impacts will it have on employees?
  - What are the benefits to the organization?
  - Where do I go for assistance?
  - What are the ramifications for not participating?



kessler consulting inc.  
innovative waste solutions

## Next Steps / Conclusion

- Requires more effort
- Need plan
- Government support and involvement
- Create a team
- Build an infrastructure
- Balance needs of various players



kessler consulting inc.  
innovative waste solutions

## Who to Contact?

Mitch Kessler  
President  
Kessler Consulting, Inc.  
(813) 971-8333  
[mk@kesconsult.com](mailto:mk@kesconsult.com)  
[www.kesconsult.com](http://www.kesconsult.com)

Elizabeth Brown  
Waste Reduction Specialist  
Hillsborough County  
Solid Waste Management  
(813) 276-2917  
[brownea@hillsboroughcounty.org](mailto:brownea@hillsboroughcounty.org)



kessler consulting inc.  
innovative waste solutions