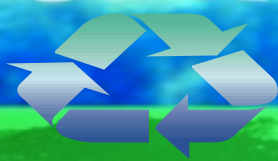




"Working locally to effect change globally"

THE

RECYCLING PLANET



WINTER 2002

A QUARTERLY REPORT ON MANAGING SOLID WASTE IN HILLSBOROUGH COUNTY

September 22, 2001

Kid's Fest/Health & Safety Fair at the Tampa Convention Center



A souvenir will help this young lady remember what recycling is all about.



Takes The Recycling Message To Your Community



Raise your hand if you recycle.

October 20, 2001

Villa Rosa Homeowners Association Community Tailgate Party at Villa Rosa Community Park



When "Can Do" talks everybody listens.



This young man ponders a future of recycling.

October 13, 2001

Lutz Community Council Bike Rodeo at Lutz Elementary School



Uncle Sam says, "recycling is one way we can all do our part for America"!



"Can Do" says, "recycling is music to my ears."

October 6, 2001

Countryway Homeowners Association Community Picnic at Countryway Tennis Court & Pavilion



This generation waved goodbye to the days before recycling.

October 26, 2001

Westchase Elementary School Fall Festival



These students are learning to spread the word about recycling.



There is no mousing around when it comes to recycling.

October 28, 2001

Annual Halloween Horribles Parade at Center Place in Brandon



"Can Do" and Tiger too.



Thank heaven for little girls who grow up to recycle.

If your community is planning an event and would like to have "CAN DO" attend, please call the Hillsborough County Solid Waste Management Department at 272-5680 for further information.

THE DO'S AND DON'TS OF CURBSIDE RECYCLING

BLUE RECYCLING CONTAINER



DO put in newspapers (remove plastic bag), magazines, junk mail (minus any plastic covers or inserts), office paper, brown paper shopping bags, and clean, unwaxed corrugated cardboard (cut to a maximum of 3 ft. squares)

DON'T put in cereal boxes, pizza boxes, waxed boxes, or paper drink carriers (see recycling spotlight article on cardboard for information)

GREEN RECYCLING CONTAINER



DO put in rinsed plastic bottles and jars with the numbers 1 and 2 (inside triangle on bottom or side of bottle or jar), glass bottles and jars (any color) aluminum and steel food and beverage containers (remove all caps and lids and place in with garbage)

DON'T put in plastic tubs or cups, aluminum pans or foil, hangers, or household batteries

Adopt-A-Road and Make a Difference



Keep Hillsborough County Beautiful (KHBC) is always looking for new Adopt-A-Road (AAR) groups to get the message out about litter prevention and to help instill a sense of community pride.

KHCB currently has 83 Adopt-A-Road/Adopt-A-Shore (AAS) groups, but it certainly needs more. The program's focus is to educate people about litter and help clean up their community at the same time.

Businesses, civic groups and concerned residents all are encouraged to adopt a road or adopt a shore and help clean up the County.

Each AAR group must have a minimum of five people. The group must commit to cleaning at least one mile of road a minimum of four times a year, for two years. KHCB asks that the groups conduct two of the cleanups during the Great American Cleanup in April and the Florida Coastal Cleanup in September.

The free program provides bags for litter and debris, safety vests and traffic cones to all groups. To recognize groups for their efforts, signs with the group's name are placed along their adopted shoreline or roadway.

For more information on how to get involved with the AAR/AAS program, call KHCB at (813) 960-5121.

HOUSEHOLD CHEMICAL COLLECTION PROGRAM EXPANDS

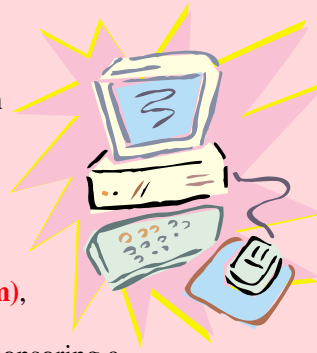
Hillsborough County is expanding its monthly Household Chemical Collection Center Program by adding a third collection site beginning in January 2002. This site is at the Hillsborough Heights Facility which is located in Thonotosassa on County Road 579 just north of I-4. Household Chemical collections are held monthly from 9:00AM to 3:00PM according to the following schedule:

First Saturday/month	Second Saturday/month	Third Saturday/month
Northwest County 9805 Sheldon Road (N. Road Maintenance Unit) Town n' Country	South County Powell Rd at Hwy 41S. (Next to S. County Transfer Sta.) Gibsonton	East County County Road 579 (North of I-4) Thonotosassa

Chemical materials accepted at these locations include: paints & solvents, automotive products, household cleaners, pool chemicals, lawn & garden supplies and other potentially toxic substances commonly found around the home and garden.

COMPUTERS AND SMALL ELECTRONICS COLLECTION

Do you have an old computer, monitor, printer, television, VCR, copier, stereo, microwave oven or other electronic item that you would like to get rid of? We want it!! In an effort to further eliminate hazardous materials from entering the waste stream (**electronics contain mercury, cadmium, lead, PCBs, selenium, lithium and beryllium**), the Hillsborough County Solid Waste Management Department (SWMD) is sponsoring a pilot program to collect and recycle old electronic equipment from County residents.



The SWMD, in conjunction with the Recycling Task Force of Hillsborough County, will hold its first collection at Gaither High School (16200 North Dale Mabry) on Saturday, January 26, 2002. The event will be open from 9:00AM to 3:00PM.

You can also deliver household chemicals during this event. The SWMD plans to sponsor three other collections during 2002 in different areas of the County. These events will be held in April, August and November. While there is no charge for this service, residents will be limited to 5 electronic items per household.

For additional information please contact the SWMD at 272-5680 or the Recycling Task Force at 273-3783.

RECYCLING SPOTLIGHT

CARDBOARD

Most of us think cardboard is, well, cardboard. But did you know there are basically two different types of cardboard containers? The differences between the two help us determine if and how they can be recycled.



Corrugated cardboard containers are generally used for shipping, so they're strong and durable enough to carry heavy objects and not deteriorate in inclement weather conditions. These boxes are made up of three separate sheets of paper that are held together by starch. The inner sheet is fluted to give it a crepe appearance, which helps protect the contents. These types of containers are further strengthened by the long fibers of pulp used in the manufacturing process. These long fibers also make them better for recycling.

Chipboard or Paperboard boxes, on the other hand, are very different. They are made of much shorter fibers and are not as recyclable. Chipboard boxes are generally used for containers like cereal and drink boxes. While chipboard boxes are often made from recycled materials, they are seldom good for recycling themselves. That's why it's important **not** to include them in your curbside recycling container.





Solid Waste Management Department
 County Center
 P.O. Box 1110
 Tampa, Florida 33601

PRESORTED
 STANDARD
 US POSTAGE PAID
 TAMPA, FLORIDA
 PERMIT NO. 2411



A QUARTERLY REPORT ON MANAGING SOLID WASTE IN HILLSBOROUGH COUNTY

"The Recycling Planet"
 is produced quarterly by the
 Hillsborough County Solid Waste Management Department
 County Center
 P.O. Box 1110 • Tampa, Florida 33601
 Phone: 813-272-5680




This newsletter was printed with
 recyclable soy based inks on recycled paper.

IN THIS ISSUE

-  **"Can Do" Community Focus**
-  **Household Chemical Collection Program Expands**
-  **The Do's and Dont's of Curbside Recycling**
-  **Computers and Small Electronics Collection**
-  **Adopt-A-Road and Make A Difference**
-  **Recycling Spotlight: Cardboard**

This newsletter is sent to you by the Hillsborough County Solid Waste Management Department as part of its ongoing Recycling and Waste Reduction Public Awareness and Education Program.