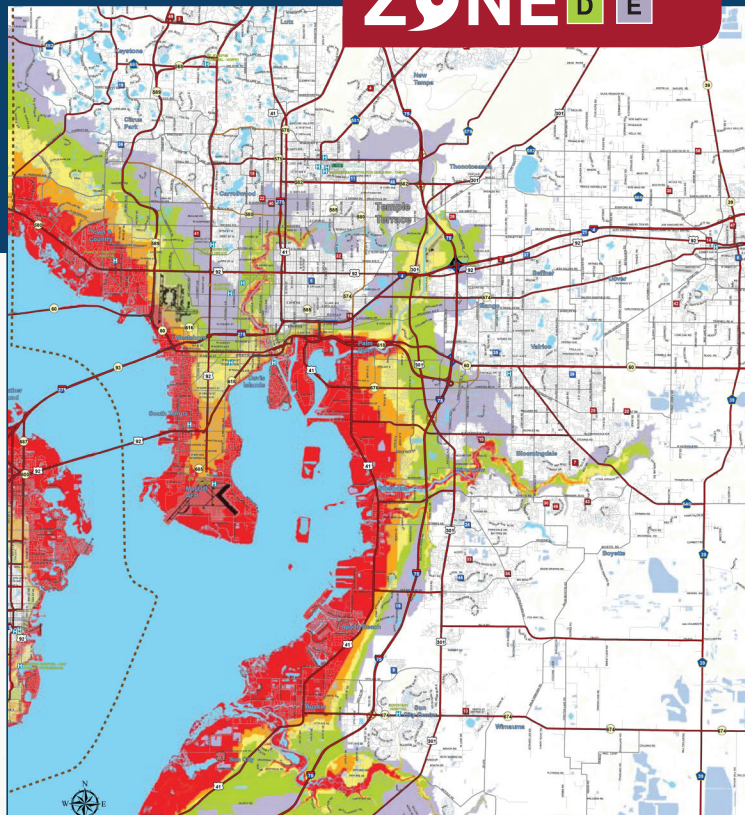


KNOW YOUR **A B C**
ZONE D E

Hurricane Preparedness

for Mobile and Manufactured Home Residents



LEGEND

Evacuation Levels

	Level A - Evacuate red areas and all mobile home/RV residents
	Level B - Evacuate red and orange areas and all mobile home/RV residents
	Level C - Evacuate red, orange and yellow areas and all mobile home/RV residents
	Level D - Evacuate red, orange, yellow and green areas and all mobile home/RV residents
	Level E - Evacuate red, orange, yellow, green and purple areas and all mobile home/RV residents

Potential Storm Tide Heights (FT)

To 11'
To 17'
To 22'
To 31'
To 38'

Evacuation Routes

Online map is available at HCFLGov.net/StaySafe under "Know Your Evacuation Zone".



Of all households, families in mobile and manufactured homes face the largest risk of damage.

If an evacuation order is issued, all mobile and manufactured home residents must evacuate!



Hillsborough County Florida
Emergency Management

HCEOC@HCFLGov.net • (813) 236.3800

HCFLGov.net/StaySafe



Hillsborough County Florida
Emergency Management

HCFLGov.net/StaySafe

Know What to Listen For and What it Means

Tropical Storm Watch

Tropical storm conditions (sustained winds of 39 to 73 mph) are possible within the specified coastal area within 48 hours.

Tropical Storm Warning

Tropical storm conditions (sustained winds of 39 to 73 mph) are expected somewhere within the specified coastal area within 36 hours.

Hurricane Watch

Hurricane conditions (sustained winds of 74 mph or higher) are possible within the specified area. The hurricane watch is issued 48 hours in advance of the anticipated onset of tropical storm-force winds.

Hurricane Warning

Hurricane conditions (sustained winds of 74 mph or higher) are expected somewhere within the specified area. The hurricane warning is issued 36 hours in advance of the anticipated onset of tropical storm-force winds.

Before the Storm

The best time to prepare for a storm is before the storm hits.

Develop Your Evacuation Plan

- Discuss temporary shelter arrangements with your friends and family
- Plan an evacuation route that avoids flood-prone roads and bridges
- Prepare an emergency contact list
- Include plans for your pets
- Register with **HCFLGov.net/HCFLAlert** for storm updates, shelter openings, evacuation notices, and more

Prepare Your Evacuation Kit

- One gallon of water per person, per day for at least three days
- A three-day supply of non-perishable food for each person in your household
- Cellphones with chargers and backup batteries
- Personal items like clothing, hygiene items, and bedding
- Health and safety items like flashlights, a first aid kit, sunscreen, bug repellent, and medications
- Important documents and photos of any valuables inside your home

During the Storm

Once an evacuation order is issued for your area, be prepared to evacuate immediately. Even tropical storm-force winds can destroy a manufactured home.

Stay Informed and Ready

- Watch for news from the National Weather Service
- Review your plan and consider evacuating early
- Make sure your devices are charged

Prepare Your Home and Evacuate

- Turn your refrigerator and freezer to the coldest settings
- Move valuable items away from windows or take them with you
- Bring in or anchor down outdoor furniture, grills, or planters
- Shut off your water and gas supply
- Lock up and leave

After the Storm

Emergency services may not be available for days or weeks.
This is when most storm-related injuries and deaths occur.

Before Returning Home

- Stay tuned to local media for updates and return only after it is reported safe to do so
- Have your picture I.D. with current address
- Drive only if necessary, and avoid flooded roads or standing water

Stay Safe at Home

- Only operate equipment you are trained to use, including a generator
- Make sure your home is stable, and be careful entering
- Do not touch downed or dangling power lines
- Beware of snakes, insects, and animals driven to higher ground
- Do not walk in water or over piles of debris
- If local water is not available:
 - Boil your water for at least one minute
 - Chlorinate your water
 - Purify your water with tablets
- If electrical service was interrupted, discard refrigerated food
- If your home was flooded, discard all dry goods

HCFLGov.net/StaySafe

