

Hiking Spree 2021-2022

Lake Dan and Lake Frances Nature Preserves

Conservation
and
Environmental Lands Management
Department

HCFLGov.net
813-672-7876

LEGEND

- | | | | |
|--|--|--|-------------------|
| | Preserve Entrance | | Fishing Pier |
| | Preserve Boundary | | Private Property |
| | Walk-over | | Inaccessible Area |
| | Horse Watering Point | | |
| | Boardwalk | | |
| | Trailhead and Parking (Hiking Access Only)
(Picnic Shelter, Playground) | | |
| | Trailhead and Parking (Equestrian and Hiking Access) | | |
| | Trail Gates (close after pass-through) | | |

PUBLIC TRAILS

Hiking and Equestrian Trails

- Central Loop
- West Loop
- East Spur

Hiking Only Trails

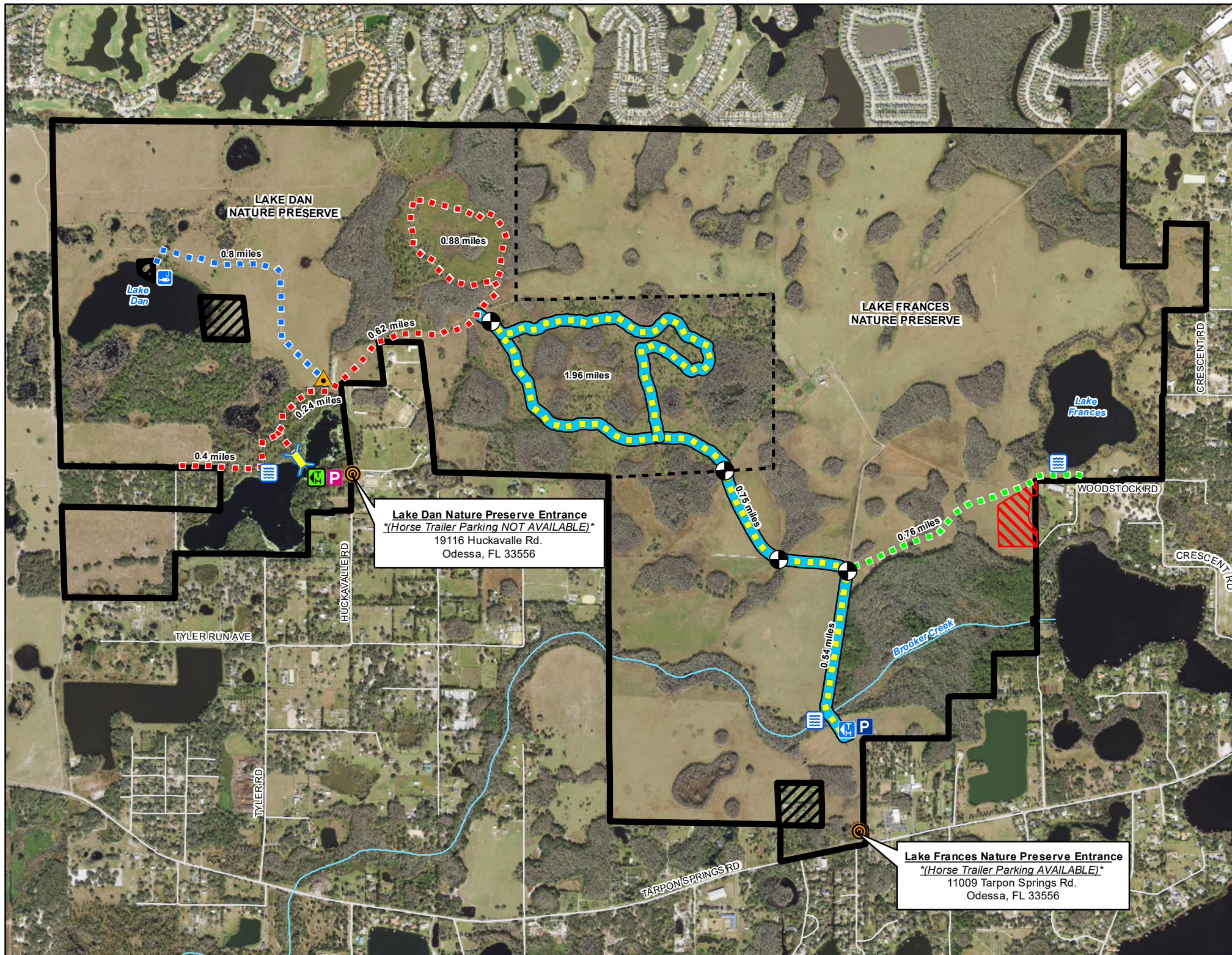
- West Spur

Hiking Spree Trail

- Pasture Pass - 4.5 miles



Navigate map with a mobile map app, such as Avenza



Lake Dan Nature Preserve Entrance
(Horse Trailer Parking NOT AVAILABLE)
19116 Huckavalle Rd.
Odessa, FL 33556

Lake Frances Nature Preserve Entrance
(Horse Trailer Parking AVAILABLE)
11009 Tarpon Springs Rd.
Odessa, FL 33556