

Alafia River Corridor (North) Nature Preserve

Conservation and
Environmental Lands Management
Department

HCFLGov.net
813-672-7876

LEGEND

- | | |
|-------------------|-----------------------------------|
| Preserve Entrance | Railroad |
| Preserve Boundary | Alderman's Ford Conservation Park |
| Trailhead | Streams |

PUBLIC TRAILS

Hiking Only Trails

- Red Loop - 4.5 miles
- Yellow Loop - 3.4 miles

CAMPING

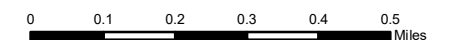
Reservation Only -- Call 813-672-7876
Two-Week Notice Required

Campsite A (Primitive)

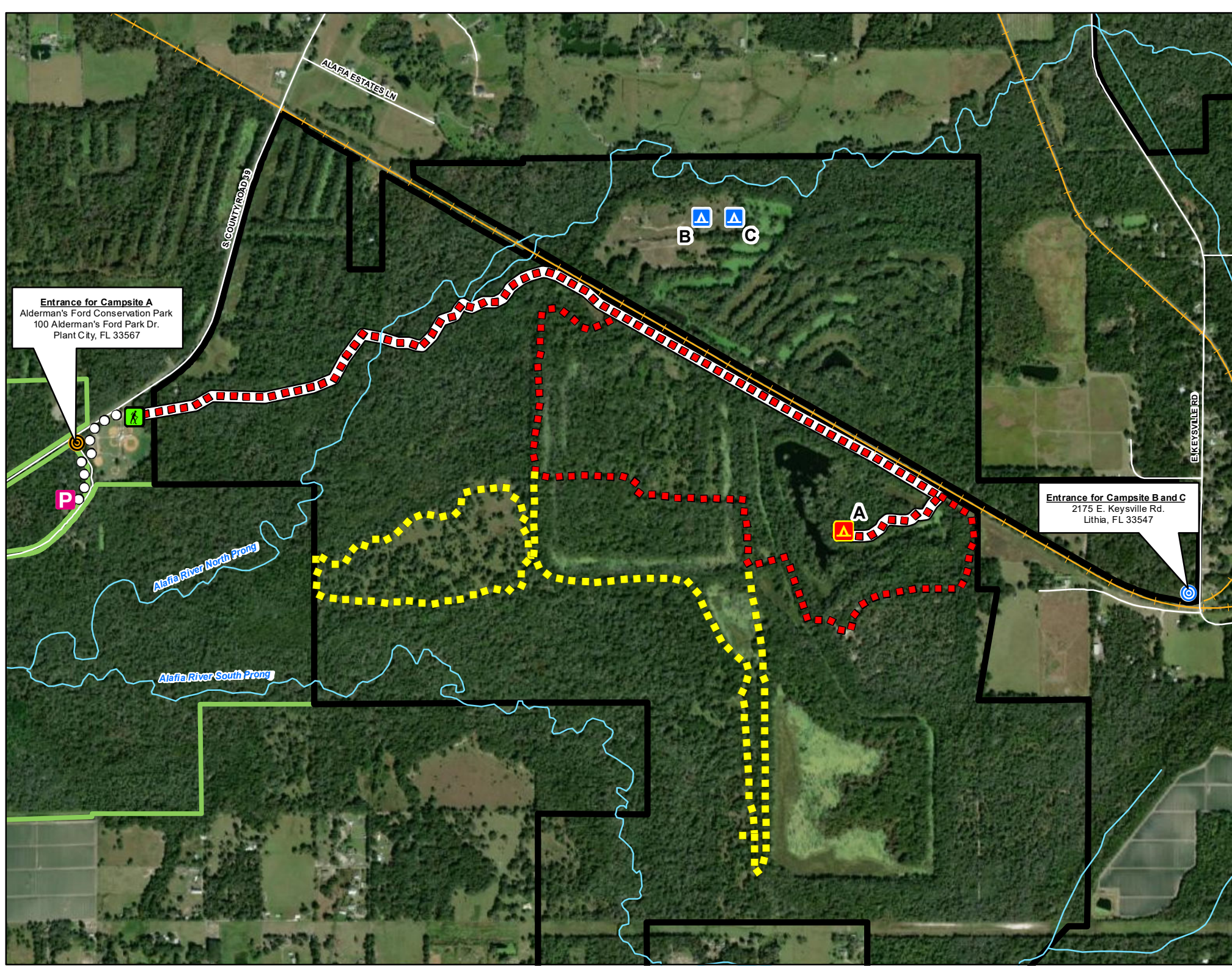
- Access Point
- Parking (\$2 Per Vehicle)
- Path to Trailhead
- Campsite (Hike In ONLY from CR 39 Trailhead)
- Trail to Campsite A - 2.4 miles

Campsite B and C (Primitive)

- Access Point
- Campsite (Drive in from E. Keysville Rd.)



Navigate map with a mobile map app, such as Avenza



Entrance for Campsite A
Alderman's Ford Conservation Park
100 Alderman's Ford Park Dr.
Plant City, FL 33567

Entrance for Campsite B and C
2175 E. Keysville Rd.
Lithia, FL 33547