

Camp Bayou Nature Preserve

Conservation
and
Environmental Lands Management
Department

HCFLGov.net
813-671-7754

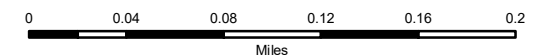
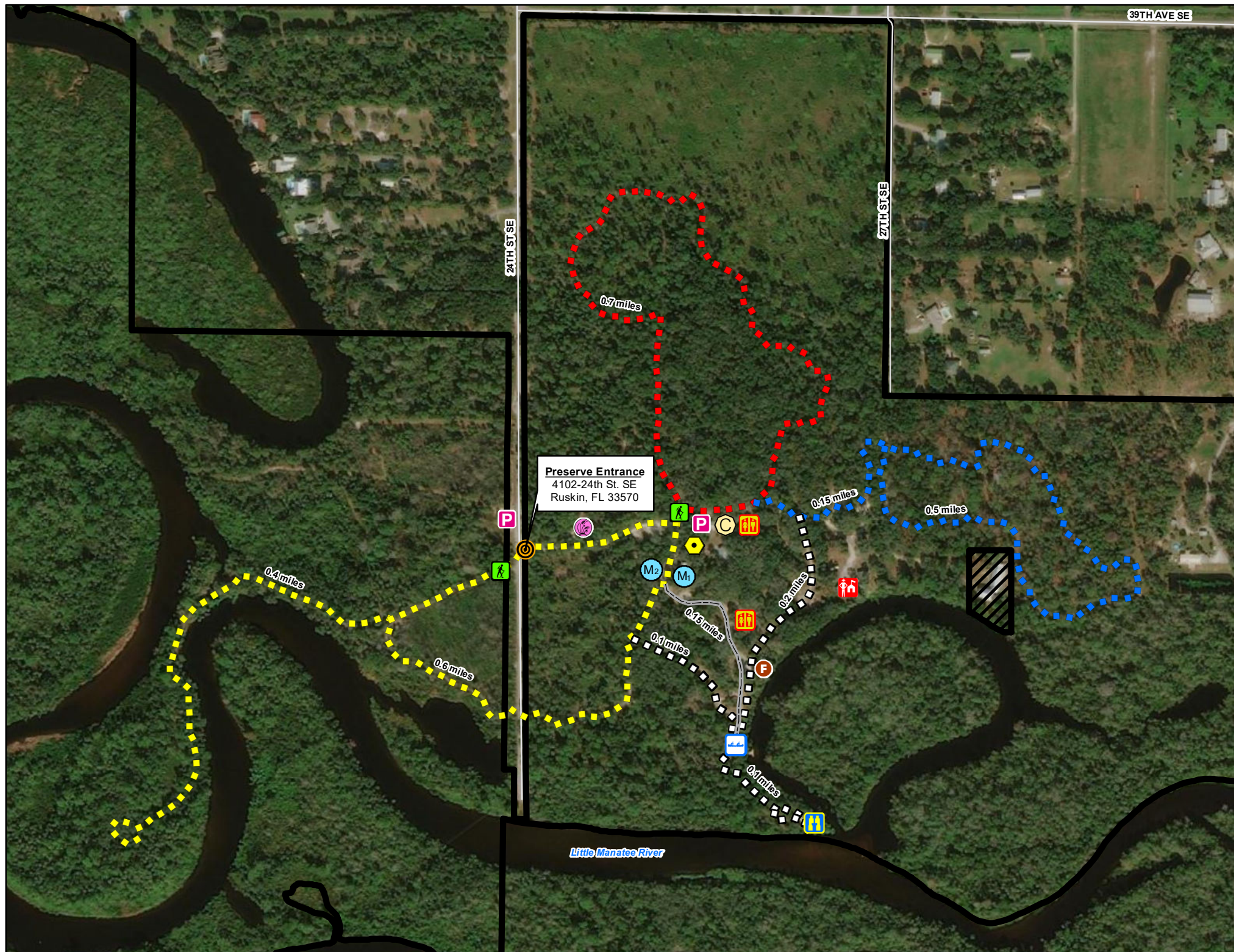
LEGEND

- | | |
|-------------------|----------------------------------|
| Preserve Entrance | Classroom |
| Preserve Boundary | Paleo Preserve Fossil Museum 1&2 |
| Parking | Butterfly Habitat |
| Visitor's Center | Fishing Cabins Exhibit |
| Restrooms | Scenic Overlook |
| Trailhead | Security Residence |
| Canoe Dock | Private Property |
| Access Road | |

PUBLIC TRAILS

Hiking Only Trails

- River Ramble
- Tortoise Trail
- Palmetto Pass
- Wetland Walk



Navigate map with a mobile map app, such as Avenza