


# Fish Hawk Creek (North) Nature Preserve


Conservation  
and  
Environmental Lands Management  
Department

[HCFLGov.net](http://HCFLGov.net)

813-672-7876


## LEGEND

 Preserve Entrance

 Preserve Boundary

 Parking

 Kiosk

 Trailhead


 Picnic Shelter

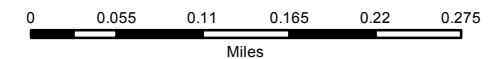
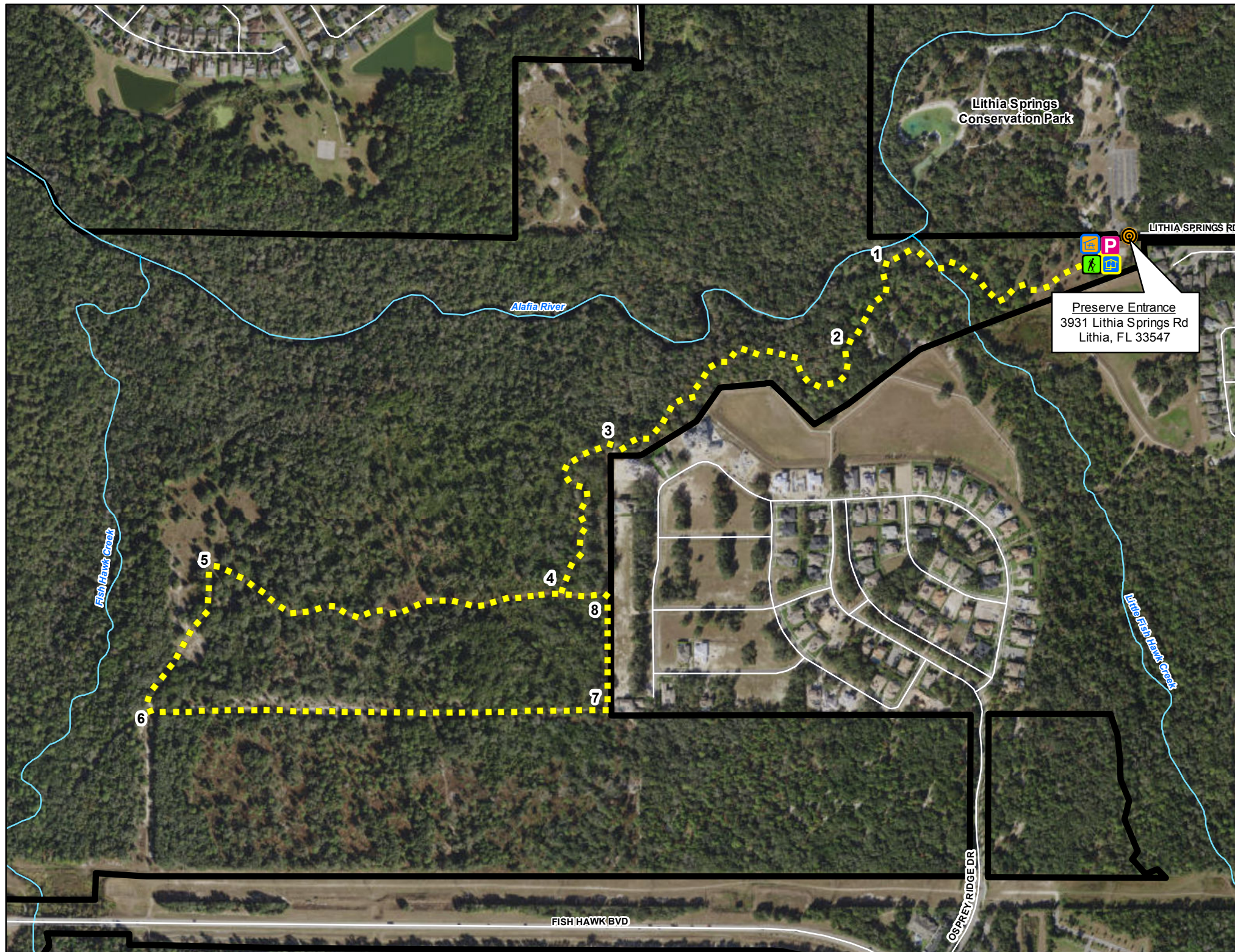
 Streams

 Trail Marker

## PUBLIC TRAILS

### Hiking Only Trails

 Yellow Loop - 2.2 miles



\*Navigate map with a mobile map app, such as Avenza\*