

# Lake Dan and Lake Frances Nature Preserves

Conservation  
and  
Environmental Lands Management  
Department

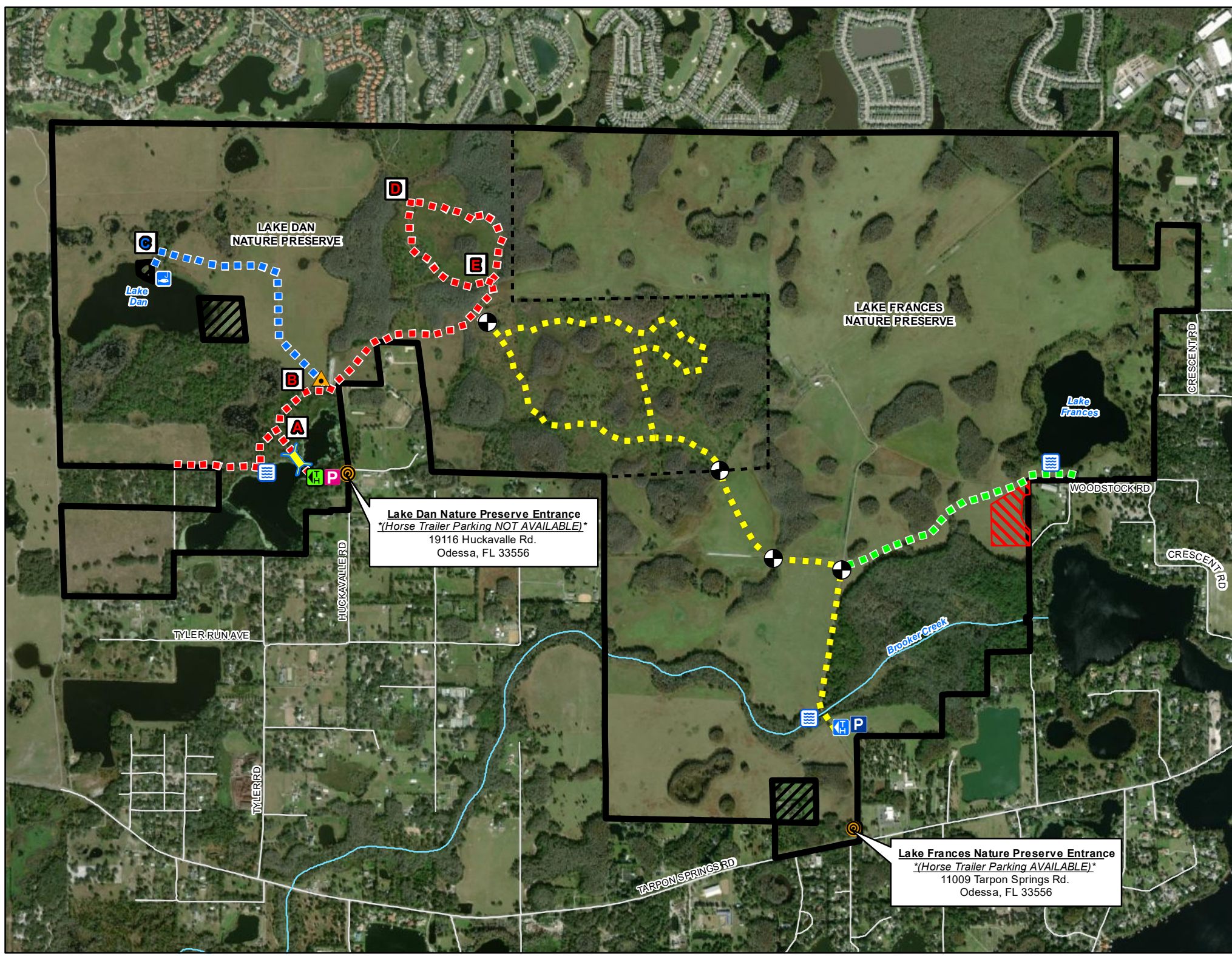
[HCFLGov.net](http://HCFLGov.net)  
813-264-8513

## LEGEND

- Preserve Entrance
- Preserve Boundary
- Trailhead and Parking (Hiking Access Only)  
(Picnic Shelter, Playground)
- Trailhead and Parking (Equestrian and Hiking Access)
- Trail Gates (close after pass-through)
- Horse Watering Point
- Boardwalk
- Walk-over
- Fishing Pier
- Audio Tour
- Private Property
- Inaccessible Area

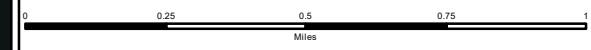
## PUBLIC TRAILS

- Hiking and Equestrian Trails**
- Central Loop - 3.2 miles
  - West Loop - 2.4 miles
  - East Spur - 0.8 miles (One-Way)
- Hiking Only Trails**
- West Spur - 0.8 miles (One-Way)



**Lake Dan Nature Preserve Entrance**  
*\*(Horse Trailer Parking NOT AVAILABLE)\**  
 19116 Huckavalle Rd.  
 Odessa, FL 33556

**Lake Frances Nature Preserve Entrance**  
*\*(Horse Trailer Parking AVAILABLE)\**  
 11009 Tarpon Springs Rd.  
 Odessa, FL 33556



\*Navigate map with a mobile map app, such as Avenza\*