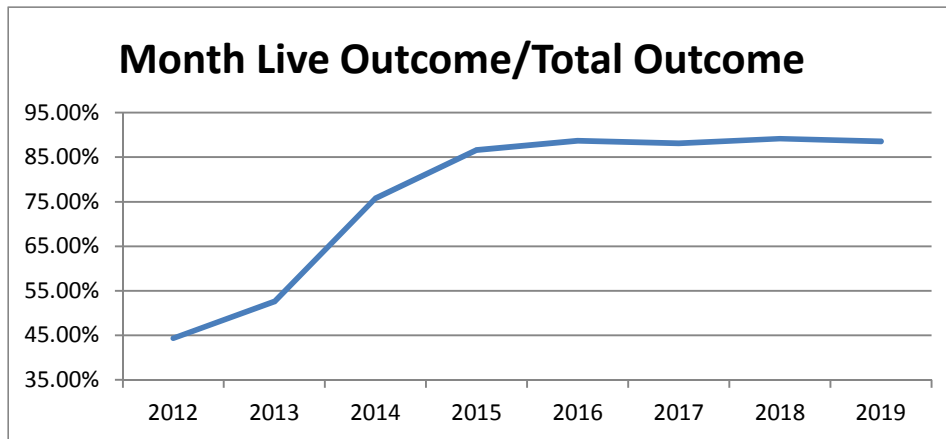


Monthly Data

	Last Year			Current			Change
	DOG	CAT	TOTAL	DOG	CAT	TOTAL	
INTAKE							
Owner Surrender	172	95	267	173	129	302	13.1%
Returns (adopt + rescue)	41	15	56	43	13	56	0.0%
Stray Over the Counter	60	177	237	147	318	465	96.2%
Stray Impounded in Field	246	266	512	184	65	249	-51.4%
Confiscated/Investigations	27	1	28	35	25	60	114.3%
Abandoned & Transferred In	0	1	1	1	0	1	0.0%
Born in Shelter	0	7	7	0	0	0	*
LIVE INTAKE	546	562	1,108	583	550	1,133	2.3%
OUTCOME							
Adoption	412	315	727	497	325	822	13.1%
Returned to Owner	77	8	85	85	9	94	10.6%
Sent to Rescue	4	103	107	3	7	10	-90.7%
Community Cat Returns		68	68		95	95	39.7%
Total Live Outcome	493	494	987	585	436	1,021	3.4%
Died in Custody/Transport	3	3	6	2	6	8	33.3%
Euthanasia	41	73	114	55	69	124	8.8%
Lost/Missing/Unaccounted For	0	0	0	0	0	0	*
Non-Live Outcome	44	76	120	57	75	132	10.0%
TOTAL OUTCOME	537	570	1,107	642	511	1,153	4.2%
Total Live Out/Total Out	91.81%	86.67%	89.16%	91.12%	85.32%	88.55%	
HSTB Kept Strays	139	5	144	99	13	112	

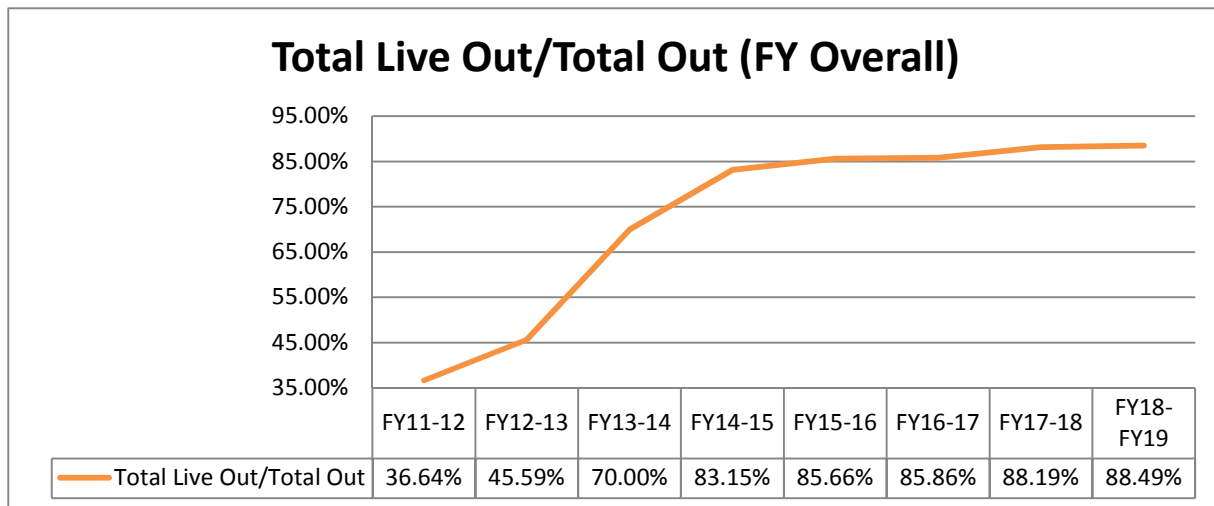
Monthly Comparisons	2012	2013	2014	2015	2016	2017	2018	2019
Live Outcome/Total Outcome	44.36%	52.54%	75.78%	86.62%	88.70%	88.15%	89.16%	88.55%



October 1st - March 31st

	FY17-18			FY18-19			Change
	DOG	CAT	TOTAL	DOG	CAT	TOTAL	
INTAKE							
Owner Surrender	790	616	1,406	753	521	1,274	-9.4%
Returns (adopt + rescue)	210	60	270	193	41	234	-13.3%
Stray Over the Counter	979	1,641	2,620	964	2,131	3,095	18.1%
Stray Impounded in Field	1,636	1,277	2,913	1,094	491	1,585	-45.6%
Confiscated/Investigations	144	62	206	124	55	179	-13.1%
Abandoned & Transferred In	1	1	2	7	1	8	300.0%
Born in Shelter	18	11	29	0	14	14	-51.7%
LIVE INTAKE	3,778	3,668	7,446	3,135	3,254	6,389	-14.2%
OUTCOME							
Adoption	2,270	2,067	4,337	2,346	2,469	4,815	11.0%
Returned to Owner	499	61	560	504	59	563	0.5%
Sent to Rescue or Shelter	866	1,107	1,973	98	159	257	-87.0%
Community Cat Returns		624	624		515	515	-17.5%
Total Live Outcome	3,635	3,859	7,494	2,948	3,202	6,150	-17.9%
Died in Custody, Foster, Offsite	17	78	95	11	41	52	-45.3%
Euthanasia	231	410	641	281	466	747	16.5%
Lost/Missing/Unaccounted For	0	0	0	1	0	1	100.0%
Non-Live Outcome	248	488	736	293	507	800	8.7%
TOTAL OUTCOME	3,883	4,347	8,230	3,241	3,709	6,950	-15.6%
Total Live Out/Total Out	93.61%	88.77%	91.06%	90.96%	86.33%	88.49%	

<i>FY Totals (Current FY is YTD)</i>	FY11-12	FY12-13	FY13-14	FY14-15	FY15-16	FY16-17	FY17-18	FY18-FY19
Total Live Intake	20,099	21,493	16,893	14,778	15,620	18,481	18,170	6,389
Live Outcome	7,340	10,021	11,707	12,833	12,917	16,058	17,061	6,150
Non Live Outcome	12,691	11,960	5,017	2,600	2,163	2,645	2,285	800
Total Outcome	20,031	21,981	16,724	15,433	15,080	18,703	19,346	6,950
	FY11-12	FY12-13	FY13-14	FY14-15	FY15-16	FY16-17	FY17-18	FY18-FY19
Total Live Out/Total Out	36.64%	45.59%	70.00%	83.15%	85.66%	85.86%	88.19%	88.49%



Figures do not include close to 2000 stray pets taken in by HSTB and not transferred to PRC

Affordable Sterilization Vouchers

	Redeemed	Issued
Oct-18	65	726 **
Nov-18	809	617
Dec-18	262	429
Jan-19	422	743
Feb-19	412	615
Mar-19	278	668
Apr-19		
May-19		
Jun-19		
Jul-19		
Aug-19		
Sep-19		
FY Totals	2,248	3,798

License Tag Sales*

	FY14-15	FY15-16	FY16-17	FY17-18	FY18-19
October	\$144,685	\$116,482	\$116,985	\$164,556	\$164,505
November	\$108,896	\$130,315	\$136,977	\$182,802	\$148,317
December	\$149,347	\$162,215	\$154,211	\$145,078	\$114,433
January	\$135,602	\$96,636	\$158,793	\$178,753	\$194,641
February	\$149,452	\$129,493	\$109,638	\$143,526	\$166,688
March	\$189,842	\$166,242	\$184,382	\$180,889	\$183,723
April	\$149,040	\$148,546	\$154,458	\$204,569	
May	\$161,296	\$168,534	\$176,606	\$207,145	
June	\$175,953	\$137,223	\$146,250	\$202,219	
July	\$122,197	\$118,009	\$159,902	\$199,203	
August	\$69,040	\$162,870	\$252,675	\$191,904	
September	\$222,404	\$150,039	\$158,507	\$173,280	
FY Totals	\$1,777,754	\$1,686,604	\$1,909,384	\$2,173,924	

* Current monthly figures are pre-verification with Clerk (may be adjusted)

** Employee on leave that processes vouchers