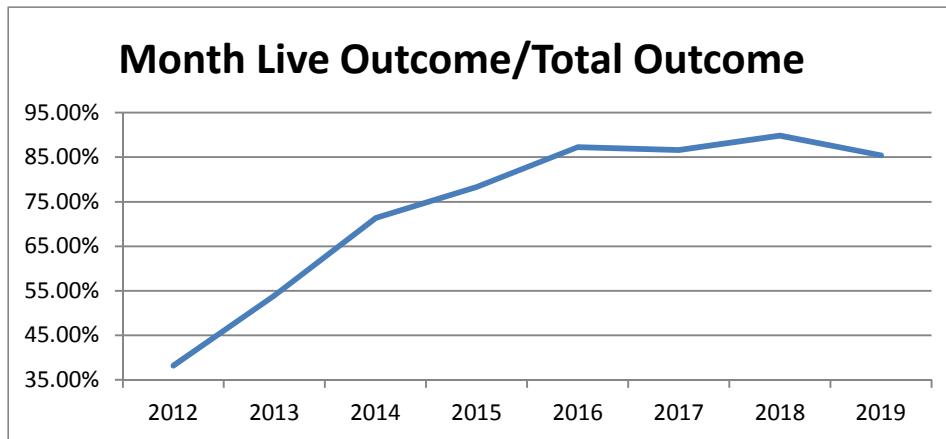


Monthly Data

	Last Year			Current			Change
	DOG	CAT	TOTAL	DOG	CAT	TOTAL	
INTAKE							
Owner Surrender	164	85	249	154	68	222	-10.8%
Returns (adopt + rescue)	50	2	52	33	6	39	-25.0%
Stray Over the Counter	158	320	478	133	378	511	6.9%
Stray Impounded in Field	227	414	641	222	68	290	-54.8%
Confiscated/Investigations	32	28	60	44	38	82	36.7%
Abandoned & Transferred In	0	0	0	1	0	1	*
Born in Shelter	0	6	6	0	0	0	*
LIVE INTAKE	631	855	1,486	587	558	1,145	-22.9%
OUTCOME							
Adoption	441	340	781	359	291	650	-16.8%
Returned to Owner	92	4	96	80	14	94	-2.1%
Sent to Rescue	44	204	248	7	57	64	-74.2%
Community Cat Returns		85	85		36	36	-57.6%
Total Live Outcome	577	633	1,210	446	398	844	-30.2%
Died in Custody/Transport	3	10	13	1	9	10	-23.1%
Euthanasia	46	77	123	44	90	134	8.9%
Lost/Missing/Unaccounted For	0	1	1	0	0	0	*
Non-Live Outcome	49	88	137	45	99	144	5.1%
TOTAL OUTCOME	626	721	1,347	491	497	988	-26.7%
Total Live Out/Total Out	92.17%	87.79%	89.83%	90.84%	80.08%	85.43%	
HSTB Kept Strays	66	8	74	82	5	87	

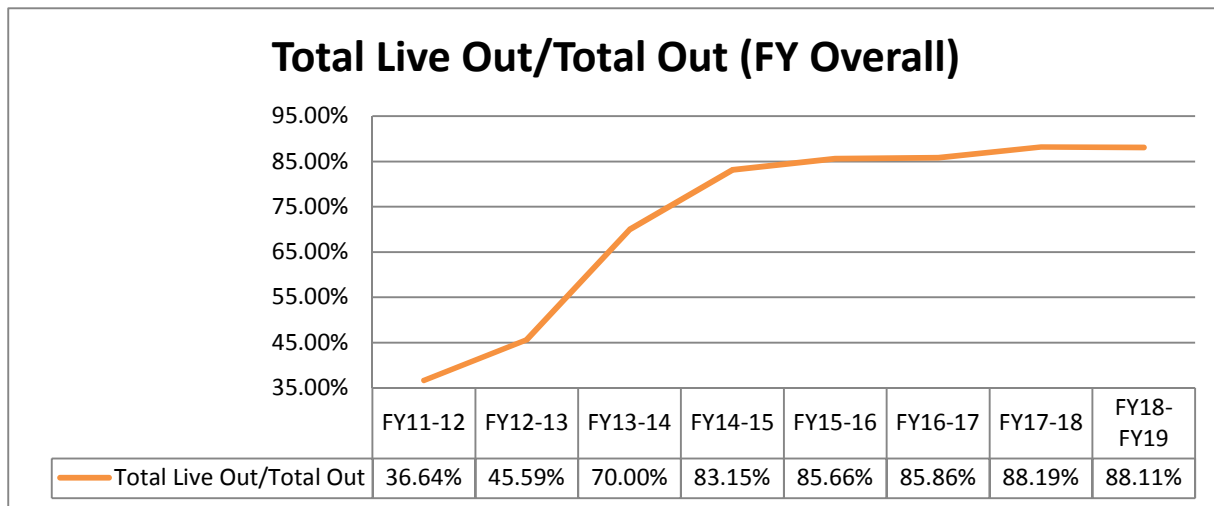
Monthly Comparisons	2012	2013	2014	2015	2016	2017	2018	2019
Live Outcome/Total Outcome	38.21%	53.90%	71.33%	78.26%	87.25%	86.61%	89.84%	85.43%



October 1st - April 30th

	FY17-18			FY18-19			Change
	DOG	CAT	TOTAL	DOG	CAT	TOTAL	
INTAKE							
Owner Surrender	954	701	1,655	907	589	1,496	-9.6%
Returns (adopt + rescue)	260	62	322	226	47	273	-15.2%
Stray Over the Counter	1,137	1,961	3,098	1,097	2,509	3,606	16.4%
Stray Impounded in Field	1,863	1,691	3,554	1,316	559	1,875	-47.2%
Confiscated/Investigations	176	90	266	168	93	261	-1.9%
Abandoned & Transferred In	1	1	2	8	1	9	350.0%
Born in Shelter	18	17	35	0	14	14	-60.0%
LIVE INTAKE	4,409	4,523	8,932	3,722	3,812	7,534	-15.7%
OUTCOME							
Adoption	2,711	2,407	5,118	2,705	2,760	5,465	6.8%
Returned to Owner	591	65	656	584	73	657	0.2%
Sent to Rescue or Shelter	912	1,311	2,223	105	216	321	-85.6%
Community Cat Returns		709	709		551	551	-22.3%
Total Live Outcome	4,214	4,492	8,706	3,394	3,600	6,994	-19.7%
Died in Custody, Foster, Offsite	20	88	108	12	50	62	-42.6%
Euthanasia	277	487	764	325	556	881	15.3%
Lost/Missing/Unaccounted For	0	1	1	1	0	1	100.0%
Non-Live Outcome	297	576	873	338	606	944	8.1%
TOTAL OUTCOME	4,511	5,068	9,579	3,732	4,206	7,938	-17.1%
Total Live Out/Total Out	93.42%	88.63%	90.89%	90.94%	85.59%	88.11%	

<i>FY Totals (Current FY is YTD)</i>	FY11-12	FY12-13	FY13-14	FY14-15	FY15-16	FY16-17	FY17-18	FY18-FY19
Total Live Intake	20,099	21,493	16,893	14,778	15,620	18,481	18,170	7,534
Live Outcome	7,340	10,021	11,707	12,833	12,917	16,058	17,061	6,994
Non Live Outcome	12,691	11,960	5,017	2,600	2,163	2,645	2,285	944
Total Outcome	20,031	21,981	16,724	15,433	15,080	18,703	19,346	7,938
	FY11-12	FY12-13	FY13-14	FY14-15	FY15-16	FY16-17	FY17-18	FY18-FY19
Total Live Out/Total Out	36.64%	45.59%	70.00%	83.15%	85.66%	85.86%	88.19%	88.11%



Figures do not include close to 2000 stray pets taken in by HSTB and not transferred to PRC

Affordable Sterilization Vouchers

	Redeemed	Issued
Oct-18	65	726 **
Nov-18	809	617
Dec-18	262	429
Jan-19	422	743
Feb-19	412	615
Mar-19	278	668
Apr-19	524	690
May-19		
Jun-19		
Jul-19		
Aug-19		
Sep-19		
FY Totals	2,772	4,488

License Tag Sales*

	FY14-15	FY15-16	FY16-17	FY17-18	FY18-19
October	\$144,685	\$116,482	\$116,985	\$164,556	\$164,505
November	\$108,896	\$130,315	\$136,977	\$182,802	\$148,317
December	\$149,347	\$162,215	\$154,211	\$145,078	\$114,433
January	\$135,602	\$96,636	\$158,793	\$178,753	\$194,641
February	\$149,452	\$129,493	\$109,638	\$143,526	\$166,688
March	\$189,842	\$166,242	\$184,382	\$180,889	\$183,723
April	\$149,040	\$148,546	\$154,458	\$204,569	\$190,574
May	\$161,296	\$168,534	\$176,606	\$207,145	
June	\$175,953	\$137,223	\$146,250	\$202,219	
July	\$122,197	\$118,009	\$159,902	\$199,203	
August	\$69,040	\$162,870	\$252,675	\$191,904	
September	\$222,404	\$150,039	\$158,507	\$173,280	
FY Totals	\$1,777,754	\$1,686,604	\$1,909,384	\$2,173,924	\$1,162,880

* Current monthly figures are pre-verification with Clerk (may be adjusted)

** Employee on leave that processes vouchers