

Monthly Report: October 2014

Period Covered: October 1st through October 31st, 2014

<b>INTAKE</b>	DOG	CAT	TOTAL
Owner Surrender	139	125	<b>264</b>
Returns	27	2	<b>29</b>
Stray Over the Counter	166	384	<b>550</b>
Stray Impounded in Field	312	140	<b>452</b>
Confiscated/Investigations	78	7	<b>85</b>
Abandoned & Transferred In	33	0	<b>33</b>
Born in Shelter	7	0	<b>7</b>
<b>LIVE INTAKE</b>	<b>762</b>	<b>658</b>	<b>1,420</b>
<b>OUTCOME</b>	DOG	CAT	TOTAL
Adoption	389	255	<b>644</b>
Returned to Owner	96	8	<b>104</b>
Transfer HSTB	18	24	<b>42</b>
Sent to Rescue	149	370	<b>519</b>
Community Cat Returns		64	<b>64</b>
<b>Total Live Outcome</b>	<b>652</b>	<b>721</b>	<b>1,373</b>
Died in Custody or Foster	7	18	<b>25</b>
Euthanasia	174	114	<b>288</b>
Lost/Missing/Unaccounted For	0	1	<b>1</b>
<b>Non-Live Outcome</b>	<b>181</b>	<b>133</b>	<b>314</b>
<b>TOTAL OUTCOME</b>	<b>833</b>	<b>854</b>	<b>1,687</b>

**Noteworthy Events:**

Bite Case	137
Cruelty/Neglect	265
Dangerous Dog	1
Enforcement	305
Seizure	7
Stray	635
Transport	5
	<b>1,355</b>

	DOG	CAT	TOTAL
Total Live Out/Total Out	78.27%	84.43%	81.39%

	DOG	CAT	TOTAL
Shelter Population	241	199	<b>440</b>
Animals in Foster Care	81	459	<b>540</b>
Total Inventory	<b>322</b>	<b>658</b>	<b>980</b>

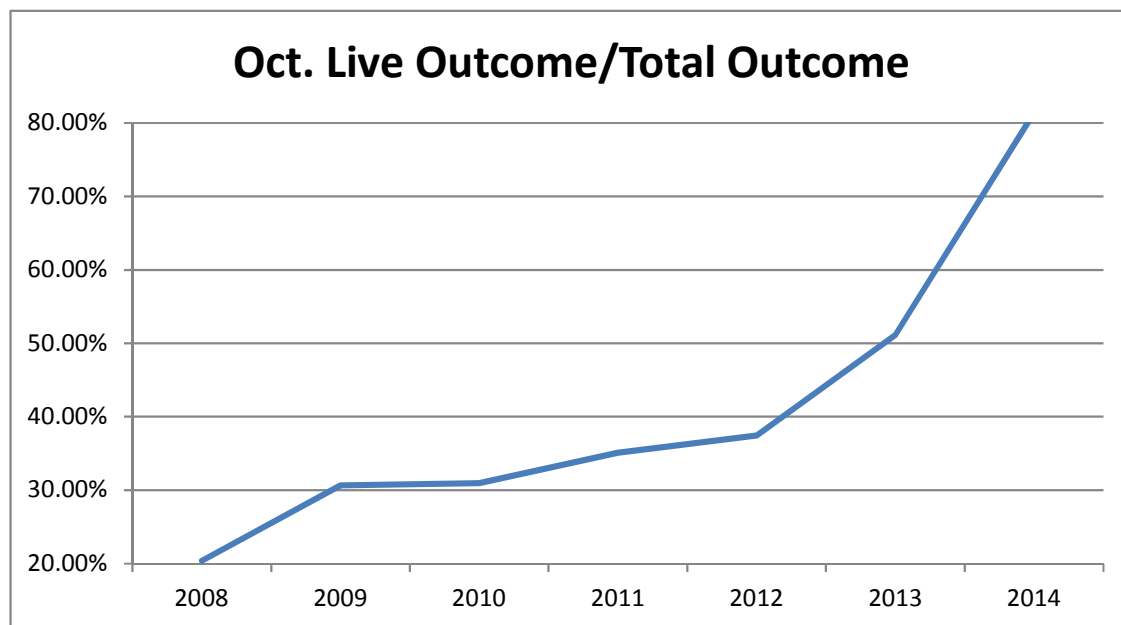
	DOG	CAT	TOTAL
Sterilizations Completed	366	352	<b>718</b>
Surgery other than S/N	8	9	<b>17</b>
Exams	1,645	1,464	<b>3,109</b>
Unique Animals (Exams)	872	810	<b>1,682</b>
Treatments	5,876	3,591	<b>9,467</b>
Unique Animals (Treatments)	861	697	<b>1,558</b>
Care & Cleaning	3,874	6,185	<b>10,059</b>
Average Length of Stay	13.8	32.3	<b>in days</b>

Canine Spay	175
Canine Neuter	191
Feline Spay	177
Feline Neuter	175

October 1 - 31, 2014	Last Year DOG	Oct-13 CAT	TOTAL	Current DOG	Oct-14 CAT	TOTAL	Change
<b>INTAKE</b>							
Owner Surrender	147	112	<b>259</b>	166	127	<b>293</b>	13.1%
Stray Over the Counter	191	483	<b>674</b>	166	384	<b>550</b>	-18.4%
Stray Impounded in Field	414	344	<b>758</b>	312	140	<b>452</b>	-40.4%
Confiscated/Investigations	43	6	<b>49</b>	78	7	<b>85</b>	73.5%
Abandoned & Transferred In	0	0	<b>0</b>	33	0	<b>33</b>	**
Born in Shelter	5	0	<b>5</b>	7	0	<b>7</b>	40.0%
<b>LIVE INTAKE</b>	<b>800</b>	<b>945</b>	<b>1,745</b>	<b>762</b>	<b>658</b>	<b>1,420</b>	-18.6%
<b>OUTCOME</b>							
Adoption	391	290	<b>681</b>	389	255	<b>644</b>	-5.4%
Returned to Owner	114	15	<b>129</b>	96	8	<b>104</b>	-19.4%
Transfer to HSTB	44	24	<b>68</b>	18	24	<b>42</b>	-38.2%
Sent to Rescue	0	0	<b>0</b>	149	370	<b>519</b>	**
Community Cat Returns		0	<b>0</b>		64	<b>64</b>	**
<b>Total Live Outcome</b>	<b>549</b>	<b>329</b>	<b>878</b>	<b>652</b>	<b>721</b>	<b>1,373</b>	56.4%
Died in Custody or Foster	9	19	<b>28</b>	7	18	<b>25</b>	-10.7%
Euthanasia	284	525	<b>809</b>	174	114	<b>288</b>	-64.4%
Lost/Missing/Unaccounted For	0	2	<b>2</b>	0	1	<b>1</b>	-50.0%
<b>Non-Live Outcome</b>	<b>293</b>	<b>546</b>	<b>839</b>	<b>181</b>	<b>133</b>	<b>314</b>	-62.6%
<b>TOTAL OUTCOME</b>	<b>842</b>	<b>875</b>	<b>1,717</b>	<b>833</b>	<b>854</b>	<b>1,687</b>	-1.7%
Total Live Out/Total Out	65.20%	37.60%	51.14%	78.27%	84.43%	81.39%	

2013 Adoption numbers include sent to rescue under old recordkeeping

	2008	2009	2010	2011	2012	2013	2014
Live Outcome/Total Outcome	20.38%	30.66%	30.93%	35.07%	37.46%	51.14%	81.39%

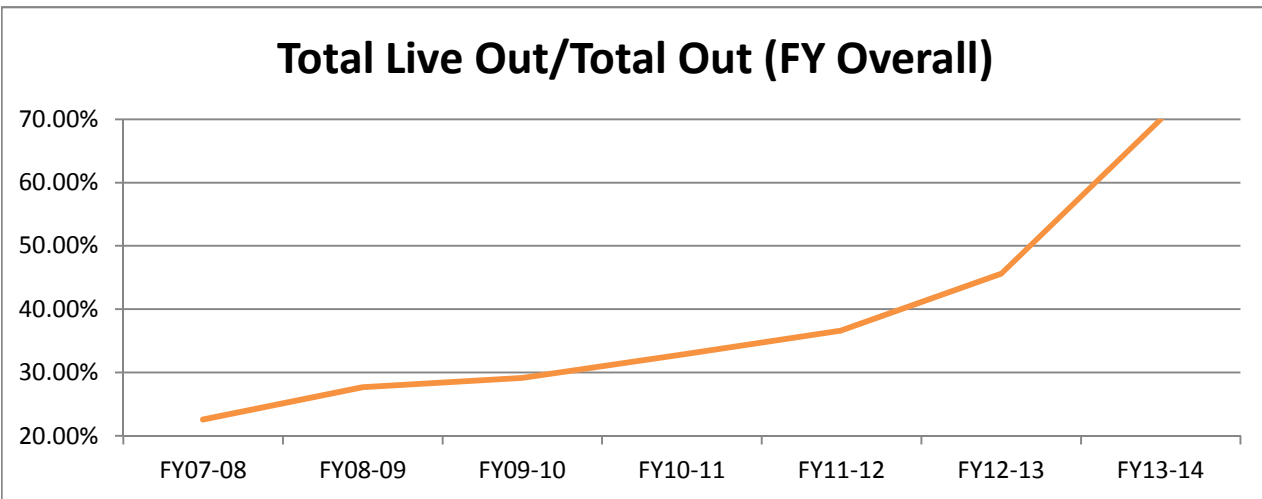


October 1st through October 31st

	FY13-14			FY14-15			Change
	DOG	CAT	TOTAL	DOG	CAT	TOTAL	
<b>INTAKE</b>							
Owner Surrender	147	112	259	139	125	264	1.9%
Returns	n/a	n/a	0	27	3	30	**
Stray Over the Counter	191	483	674	166	384	550	-18.4%
Stray Impounded in Field	414	344	758	312	140	452	-40.4%
Confiscated/Investigations	43	6	49	78	7	85	73.5%
Abandoned & Transferred In	0	0	0	0	0	0	**
Born in Shelter	5	0	5	7	0	7	40.0%
<b>LIVE INTAKE</b>	<b>800</b>	<b>945</b>	<b>1,745</b>	<b>729</b>	<b>659</b>	<b>1,388</b>	<b>-20.5%</b>
<b>OUTCOME</b>							
Adoption	391	290	681	389	255	644	-5.4%
Returned to Owner	114	15	129	96	8	104	-19.4%
Sent to Rescue	44	24	68	167	394	561	725.0%
Community Cat Returns		0	0		64	64	**
<b>Total Live Outcome</b>	<b>549</b>	<b>329</b>	<b>878</b>	<b>652</b>	<b>721</b>	<b>1,373</b>	<b>56.4%</b>
Died in Custody or Foster	9	19	28	7	18	25	-10.7%
Euthanasia	284	525	809	174	114	288	-64.4%
Lost/Missing/Unaccounted For	0	2	2	0	1	1	-50.0%
<b>Non-Live Outcome</b>	<b>293</b>	<b>546</b>	<b>839</b>	<b>181</b>	<b>133</b>	<b>314</b>	<b>-62.6%</b>
<b>TOTAL OUTCOME</b>	<b>842</b>	<b>875</b>	<b>1,717</b>	<b>833</b>	<b>854</b>	<b>1,687</b>	<b>-1.7%</b>
Total Live Out/Total Out	65.20%	37.60%	51.14%	78.27%	84.43%	81.39%	59.2%

2013 Adoption numbers include sent to rescue under old recordkeeping

	FY07-08	FY08-09	FY09-10	FY10-11	FY11-12	FY12-13	FY13-14
Total Live Intake	30,837	26,914	22,807	20,118	20,099	21,493	16,893
Live Outcome	6,991	7,446	6,649	6,624	7,340	10,021	11,707
Non Live Outcome	23,937	19,441	16,155	13,528	12,691	11,960	5,017
Total Outcome	30,928	26,887	22,804	20,152	20,031	21,981	16,724
	FY07-08	FY08-09	FY09-10	FY10-11	FY11-12	FY12-13	FY13-14
Total Live Out/Total Out	22.60%	27.69%	29.16%	32.87%	36.64%	45.59%	70.00%



TNVR Program

	Returned to Field	Euthanasia
Oct-14	52	11
Nov-14		
Dec-14		
Jan-15		
Feb-15		
Mar-15		
Apr-15		
May-15		
Jun-15		
Jul-15		
Aug-15		
Sep-15		
FYI Totals	52	11

Affordable Sterilization Vouchers

	Redeemed	Issued
Oct-14	632	948
Nov-14		
Dec-14		
Jan-15		
Feb-15		
Mar-15		
Apr-15		
May-15		
Jun-15		
Jul-15		
Aug-15		
Sep-15		
FYI Totals	632	948

License Tag Sales (Reported by Fiscal & Support Services)

	FY10-11	FY11-12	FY12-13	FY13-14	FY14-15	change
October	\$176,999	\$189,412	\$205,414	\$173,625	\$141,160	-18.70%
November	\$181,637	\$154,035	\$150,956	\$118,822		
December	\$196,607	\$181,789	\$173,121	\$170,381		
January	\$155,401	\$142,859	\$172,037	\$154,744		
February	\$215,972	\$222,882	\$173,243	\$177,535		
March	\$253,862	\$207,043	\$224,642	\$187,225		
April	\$226,079	\$202,580	\$196,376	\$194,021		
May	\$222,142	\$231,426	\$226,391	\$127,320		
June	\$217,246	\$182,579	\$189,423	\$182,830		
July	\$231,030	\$224,613	\$86,202	\$123,986		
August	\$215,307	\$184,146	\$279,751	\$161,943		
September	\$216,604	\$185,485	\$171,112	\$174,260		
FYI Totals	\$2,508,886	\$2,308,849	\$2,248,668	\$1,946,692	\$141,160	

Monthly Report: November 2014

Period Covered: November 1st through November 30th, 2014

<b>INTAKE</b>	DOG	CAT	TOTAL
Owner Surrender	120	78	<b>198</b>
Returns	15	3	<b>18</b>
Stray Over the Counter	118	230	<b>348</b>
Stray Impounded in Field	224	123	<b>347</b>
Confiscated/Investigations	32	0	<b>32</b>
Abandoned & Transferred In	16	0	<b>16</b>
Born in Shelter	0	0	<b>0</b>
<b>LIVE INTAKE</b>	<b>525</b>	<b>434</b>	<b>959</b>
<b>OUTCOME</b>	DOG	CAT	TOTAL
Adoption	330	287	<b>617</b>
Returned to Owner	73	4	<b>77</b>
Transfer HSTB	3	0	<b>3</b>
Sent to Rescue	109	282	<b>391</b>
Community Cat Returns		49	<b>49</b>
<b>Total Live Outcome</b>	<b>515</b>	<b>622</b>	<b>1,137</b>
Died in Custody or Foster	2	54	<b>56</b>
Euthanasia	90	72	<b>162</b>
Lost/Missing/Unaccounted For	0	2	<b>2</b>
<b>Non-Live Outcome</b>	<b>92</b>	<b>128</b>	<b>220</b>
<b>TOTAL OUTCOME</b>	<b>607</b>	<b>750</b>	<b>1,357</b>
	DOG	CAT	TOTAL
Total Live Out/Total Out	84.84%	82.93%	83.79%
	DOG	CAT	TOTAL
Shelter Population	171	112	<b>283</b>
Animals in Foster Care	70	237	<b>307</b>
Total Inventory	<b>241</b>	<b>349</b>	<b>590</b>
	DOG	CAT	TOTAL
Sterilizations Completed	318	316	<b>634</b>
Surgery other than S/N	11	9	<b>20</b>
Exams	1,149	989	<b>2,138</b>
Unique Animals (Exams)	624	565	<b>1,189</b>
Treatments	4,374	2,570	<b>6,944</b>
Unique Animals (Treatments)	643	491	<b>1,134</b>
Care & Cleaning	6,260	4,574	<b>10,834</b>
Average Length of Stay	14.6	42.3	<b>in days</b>

**Noteworthy Events:**

Nov 24th-30th; first week where both cats and dogs had live release rate at or above 90%

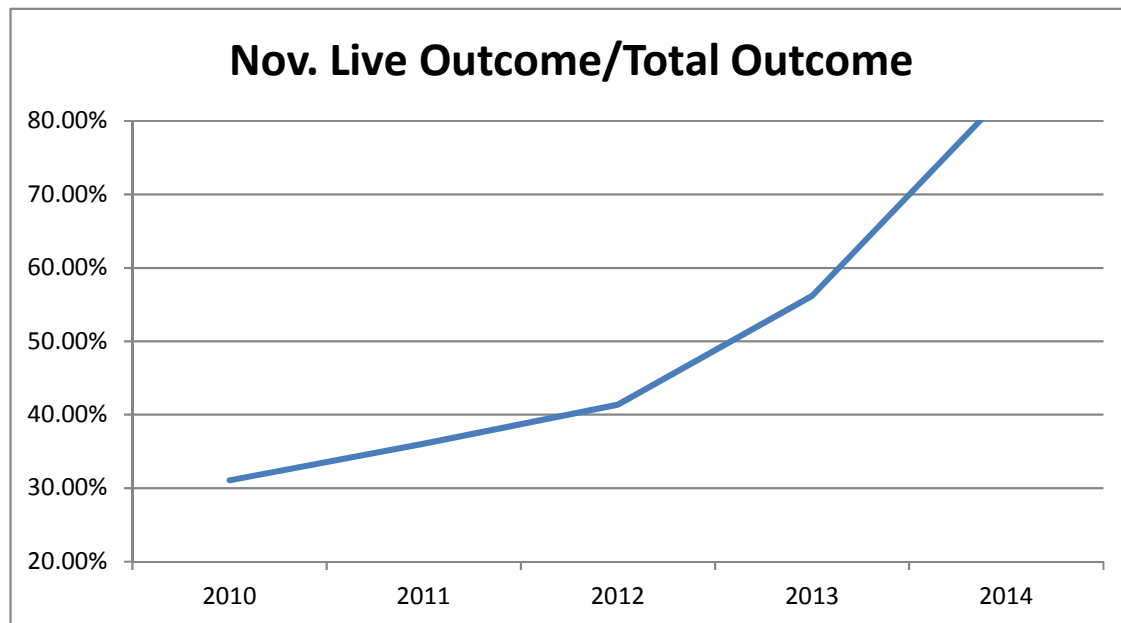
Bite Case	111
Cruelty/Neglect	216
Dangerous Dog	3
Enforcement	243
Seizure	1
Stray	468
Transport	8
	<b>1,050</b>

Canine Spay	152
Canine Neuter	166
Feline Spay	173
Feline Neuter	143
<b>Sterilizations</b>	<b>634</b>

\*\* Higher number of cats died in custody results from collection of all foster data not yet received for kittens (primarily neonatal) that died in the care of the foster caregiver over the season  
 # Average length of stay includes animals in foster care during the period as well as in shelter

November 1 - 30, 2014	Last Year			Current			Change
	DOG	CAT	TOTAL	DOG	CAT	TOTAL	
<b>INTAKE</b>							
Owner Surrender	61	95	156	135	81	216	38.5%
Stray Over the Counter	76	381	457	118	230	348	-23.9%
Stray Impounded in Field	196	252	448	224	123	347	-22.5%
Confiscated/Investigations	15	6	21	32	0	32	52.4%
Abandoned & Transferred In	0	0	0	16	0	16	**
Born in Shelter	10	6	16	0	0	0	-100.0%
<b>LIVE INTAKE</b>	<b>358</b>	<b>740</b>	<b>1,098</b>	<b>525</b>	<b>434</b>	<b>959</b>	<b>-12.7%</b>
<b>OUTCOME</b>							
Adoption	104	316	420	330	287	617	46.9%
Returned to Owner	50	16	66	73	4	77	16.7%
Transfer to HSTB	0	0	0	3	0	3	**
Sent to Rescue	90	6	96	109	282	391	307.3%
Community Cat Returns		0	0		49	49	**
<b>Total Live Outcome</b>	<b>244</b>	<b>338</b>	<b>582</b>	<b>515</b>	<b>622</b>	<b>1,137</b>	<b>95.4%</b>
Died in Custody or Foster	6	17	23	2	54	56	143.5%
Euthanasia	69	360	429	90	72	162	-62.2%
Lost/Missing/Unaccounted For	0	2	2	0	2	2	0.0%
<b>Non-Live Outcome</b>	<b>75</b>	<b>379</b>	<b>454</b>	<b>92</b>	<b>128</b>	<b>220</b>	<b>-51.5%</b>
<b>TOTAL OUTCOME</b>	<b>319</b>	<b>717</b>	<b>1,036</b>	<b>607</b>	<b>750</b>	<b>1,357</b>	<b>31.0%</b>
Total Live Out/Total Out	76.49%	47.14%	56.18%	84.84%	82.93%	83.79%	

	2010	2011	2012	2013	2014
Live Outcome/Total Outcome	31.07%	36.04%	41.37%	56.18%	83.79%

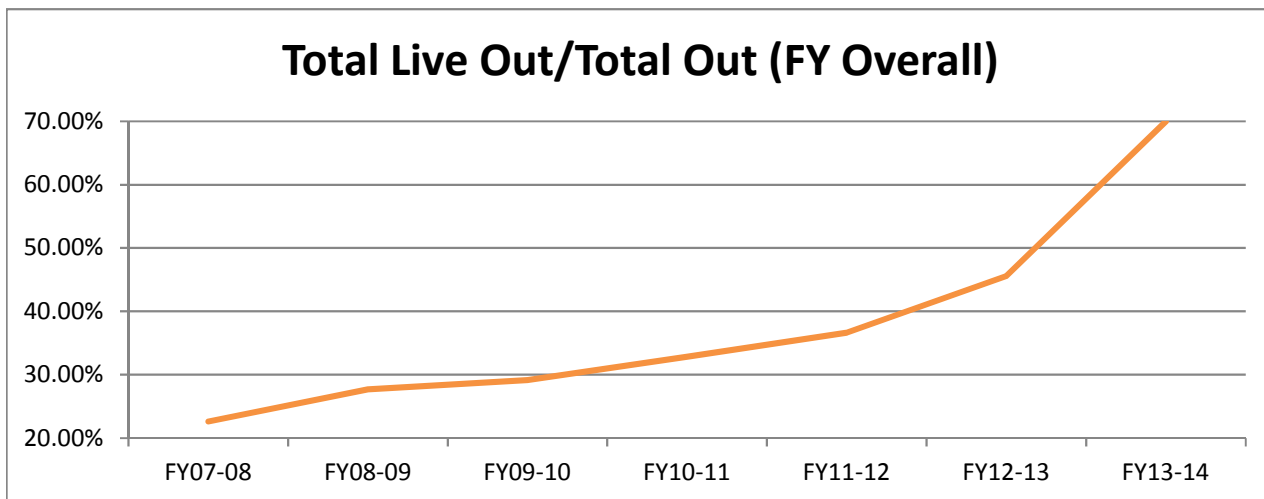


October 1st thru November 30th

	FY13-14			FY14-15			Change
	DOG	CAT	TOTAL	DOG	CAT	TOTAL	
<b>INTAKE</b>							
Owner Surrender	208	207	415	259	203	462	11.3%
Returns			0	42	6	48	**
Stray Over the Counter	267	864	1,131	284	614	898	-20.6%
Stray Impounded in Field	610	596	1,206	536	263	799	-33.7%
Confiscated/Investigations	58	12	70	110	7	117	67.1%
Abandoned & Transferred In	0	0	0	49	0	49	**
Born in Shelter	15	6	21	7	0	7	-66.7%
<b>LIVE INTAKE</b>	<b>1,158</b>	<b>1,685</b>	<b>2,843</b>	<b>1,287</b>	<b>1,093</b>	<b>2,380</b>	<b>-16.3%</b>
<b>OUTCOME</b>							
Adoption	495	606	1,101	719	542	1,261	14.5%
Returned to Owner	164	31	195	169	12	181	-7.2%
Sent to Rescue	134	30	164	279	676	955	482.3%
Community Cat Returns		0	0		113	113	**
<b>Total Live Outcome</b>	<b>793</b>	<b>667</b>	<b>1,460</b>	<b>1,167</b>	<b>1,343</b>	<b>2,510</b>	<b>71.9%</b>
Died in Custody or Foster	15	36	51	9	72	81	58.8%
Euthanasia	354	885	1,239	264	186	450	-63.7%
Lost/Missing/Unaccounted For	0	4	4	0	3	3	-25.0%
<b>Non-Live Outcome</b>	<b>369</b>	<b>925</b>	<b>1,294</b>	<b>273</b>	<b>261</b>	<b>534</b>	<b>-58.7%</b>
<b>TOTAL OUTCOME</b>	<b>1,162</b>	<b>1,592</b>	<b>2,754</b>	<b>1,440</b>	<b>1,604</b>	<b>3,044</b>	<b>10.5%</b>
Total Live Out/Total Out	68.24%	41.90%	53.01%	81.04%	83.73%	82.46%	55.5%

2013 Adoption numbers include sent to rescue under old recordkeeping

	FY07-08	FY08-09	FY09-10	FY10-11	FY11-12	FY12-13	FY13-14
Total Live Intake	30,837	26,914	22,807	20,118	20,099	21,493	16,893
Live Outcome	6,991	7,446	6,649	6,624	7,340	10,021	11,707
Non Live Outcome	23,937	19,441	16,155	13,528	12,691	11,960	5,017
Total Outcome	30,928	26,887	22,804	20,152	20,031	21,981	16,724
	FY07-08	FY08-09	FY09-10	FY10-11	FY11-12	FY12-13	FY13-14
Total Live Out/Total Out	22.60%	27.69%	29.16%	32.87%	36.64%	45.59%	70.00%



TNVR Program

	Returned to Field	Euthanasia
Oct-14	52	11
Nov-14	38	3
Dec-14		
Jan-15		
Feb-15		
Mar-15		
Apr-15		
May-15		
Jun-15		
Jul-15		
Aug-15		
Sep-15		
FYI Totals	90	14

Affordable Sterilization Vouchers

	Redeemed	Issued
Oct-14	632	948
Nov-14	267	785
Dec-14		
Jan-15		
Feb-15		
Mar-15		
Apr-15		
May-15		
Jun-15		
Jul-15		
Aug-15		
Sep-15		
FYI Totals	899	1,733

License Tag Sales (Reported by Fiscal & Support Services)

	FY10-11	FY11-12	FY12-13	FY13-14	FY14-15	change
October	\$176,999	\$189,412	\$205,414	\$173,625	\$141,160	-18.70%
November	\$181,637	\$154,035	\$150,956	\$118,822	\$88,994	-25.10%
December	\$196,607	\$181,789	\$173,121	\$170,381		
January	\$155,401	\$142,859	\$172,037	\$154,744		
February	\$215,972	\$222,882	\$173,243	\$177,535		
March	\$253,862	\$207,043	\$224,642	\$187,225		
April	\$226,079	\$202,580	\$196,376	\$194,021		
May	\$222,142	\$231,426	\$226,391	\$127,320		
June	\$217,246	\$182,579	\$189,423	\$182,830		
July	\$231,030	\$224,613	\$86,202	\$123,986		
August	\$215,307	\$184,146	\$279,751	\$161,943		
September	\$216,604	\$185,485	\$171,112	\$174,260		
FYI Totals	\$2,508,886	\$2,308,849	\$2,248,668	\$1,946,692	\$230,154	



Monthly Report: December 2014

Period Covered: December 1st through December 31st, 2014

<b>INTAKE</b>	DOG	CAT	TOTAL
Owner Surrender	140	62	<b>202</b>
Returns	32	4	<b>36</b>
Stray Over the Counter	182	254	<b>436</b>
Stray Impounded in Field	228	89	<b>317</b>
Confiscated/Investigations	38	5	<b>43</b>
Abandoned & Transferred In	24	1	<b>25</b>
Born in Shelter	0	0	<b>0</b>
<b>LIVE INTAKE</b>	<b>644</b>	<b>415</b>	<b>1,059</b>
<b>OUTCOME</b>	DOG	CAT	TOTAL
Adoption	383	288	<b>671</b>
Returned to Owner	59	3	<b>62</b>
Transfer HSTB	3	0	<b>3</b>
Sent to Rescue	138	191	<b>329</b>
Community Cat Returns		81	<b>81</b>
<b>Total Live Outcome</b>	<b>583</b>	<b>563</b>	<b>1,146</b>
Died in Custody or Foster	3	17	<b>20</b>
Euthanasia	85	50	<b>135</b>
Lost/Missing/Unaccounted For	0	0	<b>0</b>
<b>Non-Live Outcome</b>	<b>88</b>	<b>67</b>	<b>155</b>
<b>TOTAL OUTCOME</b>	<b>671</b>	<b>630</b>	<b>1,301</b>

**Noteworthy Events:**

Bite Case	122
Cruelty/Neglect	216
Dangerous Dog	0
Enforcement	295
Seizure	12
Stray	540
Transport	7
	<b>1,192</b>

	DOG	CAT	TOTAL
Total Live Out/Total Out	86.89%	89.37%	88.09%

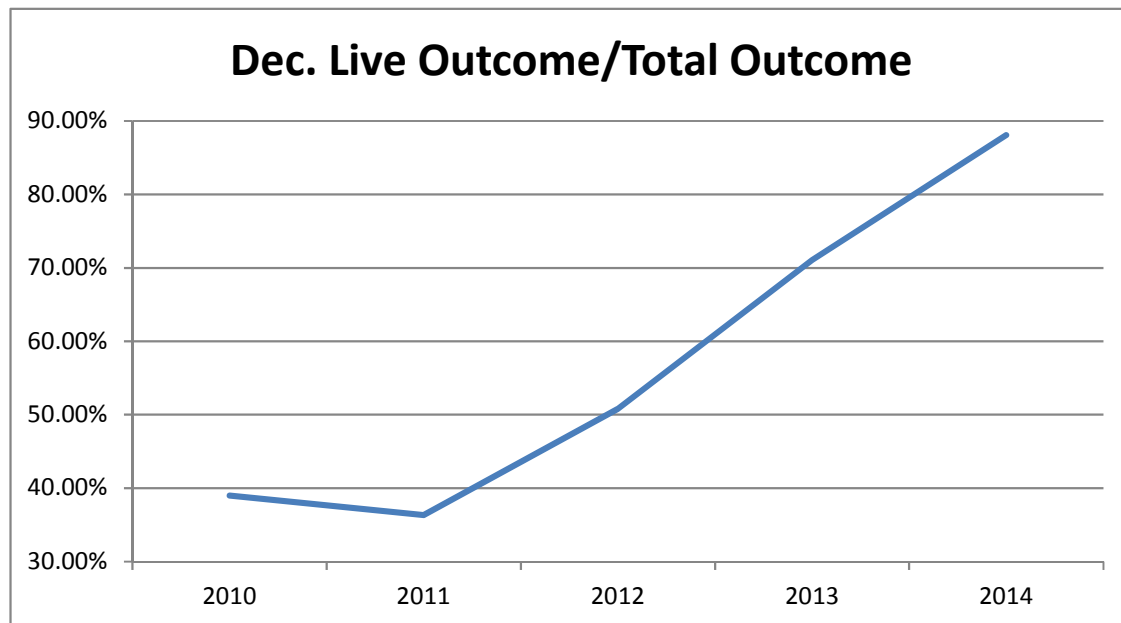
	DOG	CAT	TOTAL
Shelter Population	164	48	<b>212</b>
Animals in Foster Care	48	87	<b>135</b>
Total Inventory	<b>212</b>	<b>135</b>	<b>347</b>

	DOG	CAT	TOTAL
Sterilizations Completed	339	239	<b>578</b>
Surgery other than S/N	8	5	<b>13</b>
Exams	1,479	914	<b>2,393</b>
Unique Animals (Exams)	721	489	<b>1,210</b>
Treatments	4,722	2,087	<b>6,809</b>
Unique Animals (Treatments)	687	442	<b>1,129</b>
Care & Cleaning	5,547	2,841	<b>8,388</b>
Average Length of Stay	9	9.2	<b>in days</b>

Canine Spay	160
Canine Neuter	179
Feline Spay	136
Feline Neuter	103
<b>Sterilizations</b>	<b>578</b>

December 1 - 31, 2014	Last Year			Current			Change
	DOG	CAT	TOTAL	DOG	CAT	TOTAL	
<b>INTAKE</b>							
Owner Surrender	120	52	172	172	66	238	38.4%
Stray Over the Counter	179	275	454	182	254	436	-4.0%
Stray Impounded in Field	210	223	433	228	89	317	-26.8%
Confiscated/Investigations	44	0	44	38	5	43	-2.3%
Abandoned & Transferred In	0	0	0	24	1	25	**
Born in Shelter	0	6	6	0	0	0	-100.0%
<b>LIVE INTAKE</b>	<b>553</b>	<b>556</b>	<b>1,109</b>	<b>644</b>	<b>415</b>	<b>1,059</b>	<b>-4.5%</b>
<b>OUTCOME</b>							
Adoption	247	222	469	383	288	671	43.1%
Returned to Owner	85	8	93	59	3	62	-33.3%
Transfer to HSTB	0	0	0	3	0	3	**
Sent to Rescue	63	112	175	138	191	329	88.0%
Community Cat Returns		19	19		81	81	**
<b>Total Live Outcome</b>	<b>395</b>	<b>361</b>	<b>756</b>	<b>583</b>	<b>563</b>	<b>1,146</b>	<b>51.6%</b>
Died in Custody or Foster	10	11	21	3	17	20	-4.8%
Euthanasia	107	180	287	85	50	135	-53.0%
Lost/Missing/Unaccounted For	0	0	0	0	0	0	**
<b>Non-Live Outcome</b>	<b>117</b>	<b>191</b>	<b>308</b>	<b>88</b>	<b>67</b>	<b>155</b>	<b>-49.7%</b>
<b>TOTAL OUTCOME</b>	<b>512</b>	<b>552</b>	<b>1,064</b>	<b>671</b>	<b>630</b>	<b>1,301</b>	<b>22.3%</b>
Total Live Out/Total Out	77.15%	65.40%	71.05%	86.89%	89.37%	88.09%	

	2010	2011	2012	2013	2014
Live Outcome/Total Outcome	38.97%	36.32%	50.82%	71.05%	88.09%

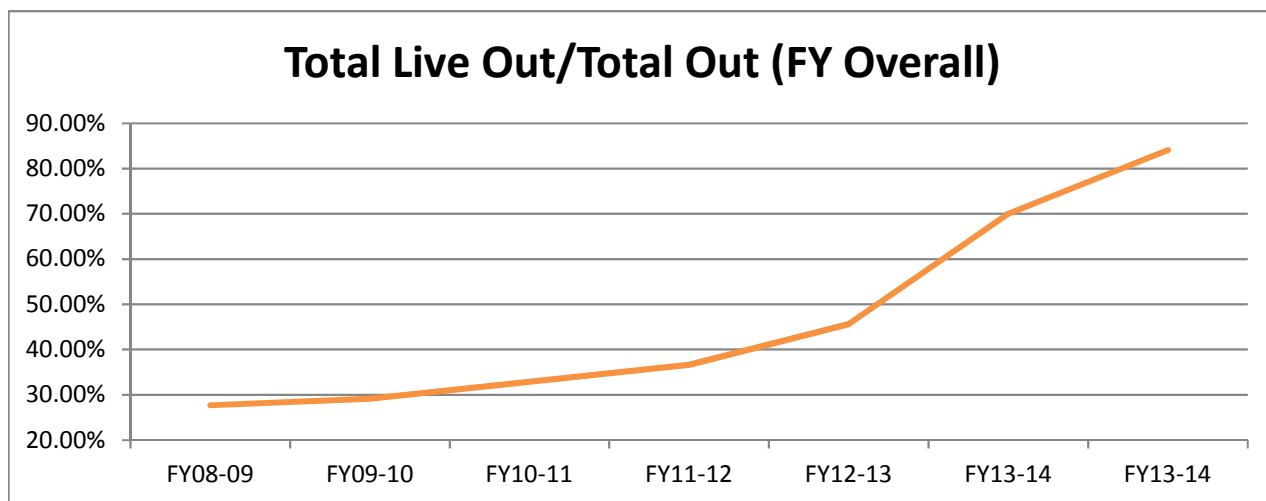


October 1st thru December 31st

	FY13-14			FY14-15			Change
	DOG	CAT	TOTAL	DOG	CAT	TOTAL	
<b>INTAKE</b>							
Owner Surrender	263	231	<b>494</b>	399	264	<b>663</b>	34.2%
Returns	65	28	<b>93</b>	74	11	<b>85</b>	-8.6%
Stray Over the Counter	446	1,139	<b>1,585</b>	467	868	<b>1,335</b>	-15.8%
Stray Impounded in Field	820	819	<b>1,639</b>	765	352	<b>1,117</b>	-31.8%
Confiscated/Investigations	102	12	<b>114</b>	148	12	<b>160</b>	40.4%
Abandoned & Transferred In	0	0	<b>0</b>	73	1	<b>74</b>	**
Born in Shelter	15	12	<b>27</b>	7	0	<b>7</b>	-74.1%
<b>LIVE INTAKE</b>	<b>1,711</b>	<b>2,241</b>	<b>3,952</b>	<b>1,933</b>	<b>1,508</b>	<b>3,441</b>	-12.9%
<b>OUTCOME</b>							
Adoption	653	622	<b>1,275</b>	1,102	830	<b>1,932</b>	51.5%
Returned to Owner	249	39	<b>288</b>	228	15	<b>243</b>	-15.6%
Sent to Rescue	283	340	<b>623</b>	420	861	<b>1,281</b>	105.6%
Community Cat Returns		26	<b>26</b>		194	<b>194</b>	**
<b>Total Live Outcome</b>	<b>1,185</b>	<b>1,027</b>	<b>2,212</b>	<b>1,750</b>	<b>1,900</b>	<b>3,650</b>	65.0%
Died in Custody or Foster	25	47	<b>72</b>	12	89	<b>101</b>	40.3%
Euthanasia	461	1,065	<b>1,526</b>	351	236	<b>587</b>	-61.5%
Lost/Missing/Unaccounted For	0	4	<b>4</b>	0	3	<b>3</b>	-25.0%
<b>Non-Live Outcome</b>	<b>486</b>	<b>1,116</b>	<b>1,602</b>	<b>363</b>	<b>328</b>	<b>691</b>	-56.9%
<b>TOTAL OUTCOME</b>	<b>1,671</b>	<b>2,143</b>	<b>3,814</b>	<b>2,113</b>	<b>2,228</b>	<b>4,341</b>	13.8%
Total Live Out/Total Out	70.92%	47.92%	58.00%	82.82%	85.28%	84.08%	45.0%

2013 Adoption numbers include sent to rescue under old recordkeeping

	FY08-09	FY09-10	FY10-11	FY11-12	FY12-13	FY13-14	FY14-15
Total Live Intake	26,914	22,807	20,118	20,099	21,493	16,893	3,441
Live Outcome	7,446	6,649	6,624	7,340	10,021	11,707	3,650
Non Live Outcome	19,441	16,155	13,528	12,691	11,960	5,017	691
Total Outcome	26,887	22,804	20,152	20,031	21,981	16,724	4,341
	FY08-09	FY09-10	FY10-11	FY11-12	FY12-13	FY13-14	FY13-14
Total Live Out/Total Out	27.69%	29.16%	32.87%	36.64%	45.59%	70.00%	84.08%



TNVR Program

	Returned to Field	Euthanasia
Oct-14	52	11
Nov-14	38	3
Dec-14	60	14
Jan-15		
Feb-15		
Mar-15		
Apr-15		
May-15		
Jun-15		
Jul-15		
Aug-15		
Sep-15		
FYI Totals	150	28

Affordable Sterilization Vouchers

	Redeemed	Issued
Oct-14	632	948
Nov-14	267	785
Dec-14	977	855
Jan-15		
Feb-15		
Mar-15		
Apr-15		
May-15		
Jun-15		
Jul-15		
Aug-15		
Sep-15		
FYI Totals	1876	2,588

License Tag Sales (Reported by Fiscal & Support Services)

	FY10-11	FY11-12	FY12-13	FY13-14	FY14-15	change
October	\$176,999	\$189,412	\$205,414	\$173,625	\$141,160	-18.70%
November	\$181,637	\$154,035	\$150,956	\$118,822	\$88,994	-25.10%
December	\$196,607	\$181,789	\$173,121	\$170,381	\$149,347	-12.35%
January	\$155,401	\$142,859	\$172,037	\$154,744		
February	\$215,972	\$222,882	\$173,243	\$177,535		
March	\$253,862	\$207,043	\$224,642	\$187,225		
April	\$226,079	\$202,580	\$196,376	\$194,021		
May	\$222,142	\$231,426	\$226,391	\$127,320		
June	\$217,246	\$182,579	\$189,423	\$182,830		
July	\$231,030	\$224,613	\$86,202	\$123,986		
August	\$215,307	\$184,146	\$279,751	\$161,943		
September	\$216,604	\$185,485	\$171,112	\$174,260		
FYI Totals	\$2,508,886	\$2,308,849	\$2,248,668	\$1,946,692	\$379,501	

Monthly Report: January 2015

Period Covered: January 1st through 31st, 2015

<b>INTAKE</b>	DOG	CAT	TOTAL
Owner Surrender	190	67	<b>257</b>
Returns	21	7	<b>28</b>
Stray Over the Counter	167	162	<b>329</b>
Stray Impounded in Field	230	102	<b>332</b>
Confiscated/Investigations	38	6	<b>44</b>
Abandoned & Transferred In	20	0	<b>20</b>
Born in Shelter	8	0	<b>8</b>
<b>LIVE INTAKE</b>	<b>674</b>	<b>344</b>	<b>1,018</b>
<b>OUTCOME</b>	DOG	CAT	TOTAL
Adoption	373	140	<b>513</b>
Returned to Owner	59	3	<b>62</b>
Transfer HSTB	0	0	<b>0</b>
Sent to Rescue	128	57	<b>185</b>
Community Cat Returns		63	<b>63</b>
<b>Total Live Outcome</b>	<b>560</b>	<b>263</b>	<b>823</b>
Died in Custody or Foster	7	9	<b>16</b>
Euthanasia	53	51	<b>104</b>
Lost/Missing/Unaccounted For	1	0	<b>1</b>
<b>Non-Live Outcome</b>	<b>61</b>	<b>60</b>	<b>121</b>
<b>TOTAL OUTCOME</b>	<b>621</b>	<b>323</b>	<b>944</b>
	DOG	CAT	TOTAL
Total Live Out/Total Out	90.18%	81.42%	87.18%
	DOG	CAT	TOTAL
Shelter Population	209	80	<b>289</b>
Animals in Foster Care	57	81	<b>138</b>
Total Inventory	<b>266</b>	<b>161</b>	<b>427</b>
	DOG	CAT	TOTAL
Sterilizations Completed	362	140	<b>502</b>
Surgery other than S/N	5	3	<b>8</b>
Exams	1,563	568	<b>2,131</b>
Unique Animals (Exams)	740	347	<b>1,087</b>
Treatments	5,545	1,222	<b>6,767</b>
Unique Animals (Treatments)	729	325	<b>1,054</b>
Care & Cleaning	5,663	1,461	<b>7,124</b>
Average Length of Stay	7	5.2	<b>in days</b>

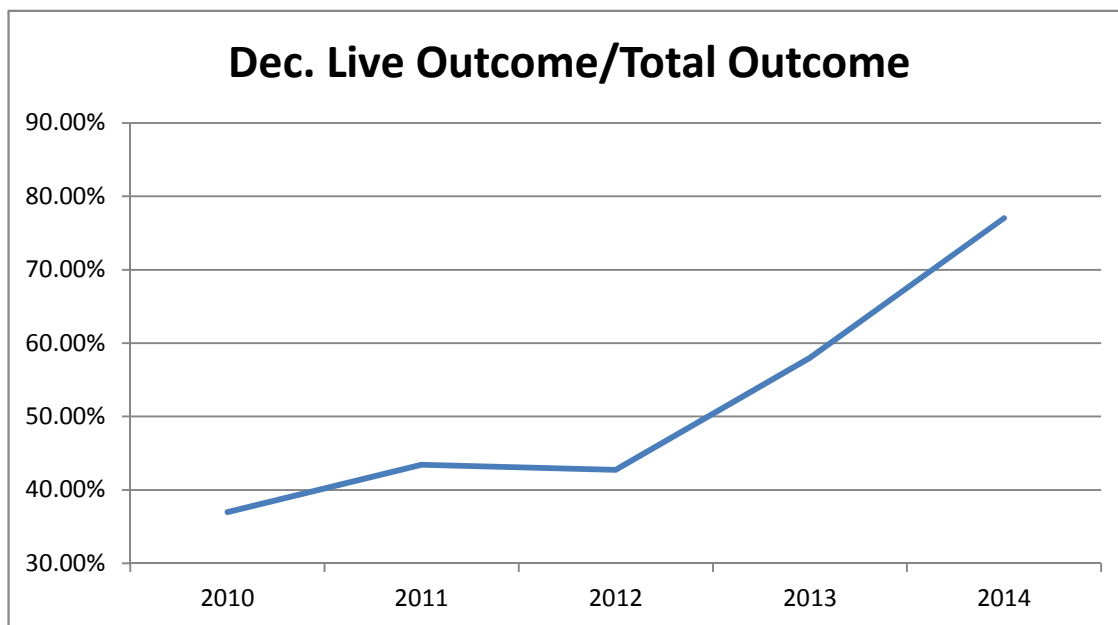
**Noteworthy Events:**

Termite tenting of facility  
Jan 4th through January 11th

Bite Case	144
Cruelty/Neglect	252
Dangerous Dog	3
Enforcement	346
Seizure	4
Stray	564
Transport	7
	<b>1,320</b>

Canine Spay	157
Canine Neuter	205
Feline Spay	70
Feline Neuter	70
<b>Sterilizations</b>	<b>502</b>

January 1 - 31, 2015	Last Year			Current			Change
	DOG	CAT	TOTAL	DOG	CAT	TOTAL	
<b>INTAKE</b>							
Owner Surrender	126	74	200	211	74	285	42.5%
Stray Over the Counter	235	216	451	167	162	329	-27.1%
Stray Impounded in Field	314	173	487	230	102	332	-31.8%
Confiscated/Investigations	43	12	55	38	6	44	-20.0%
Abandoned & Transferred In	0	0	0	20	0	20	**
Born in Shelter	0	0	0	8	0	8	**
<b>LIVE INTAKE</b>	<b>718</b>	<b>475</b>	<b>1,193</b>	<b>674</b>	<b>344</b>	<b>1,018</b>	<b>-14.7%</b>
<b>OUTCOME</b>							
Adoption	455	341	796	373	140	513	-35.6%
Returned to Owner	113	11	124	59	3	62	-50.0%
Transfer to HSTB	0	0	0	0	0	0	**
Sent to Rescue	0	0	0	128	57	185	**
Community Cat Returns		72	72		63	63	-12.5%
<b>Total Live Outcome</b>	<b>568</b>	<b>424</b>	<b>992</b>	<b>560</b>	<b>263</b>	<b>823</b>	<b>-17.0%</b>
Died in Custody or Foster	10	10	20	7	9	16	-20.0%
Euthanasia	153	121	274	53	51	104	-62.0%
Lost/Missing/Unaccounted For	1	1	2	1	0	1	**
<b>Non-Live Outcome</b>	<b>164</b>	<b>132</b>	<b>296</b>	<b>61</b>	<b>60</b>	<b>121</b>	<b>-59.1%</b>
<b>TOTAL OUTCOME</b>	<b>732</b>	<b>556</b>	<b>1,288</b>	<b>621</b>	<b>323</b>	<b>944</b>	<b>-26.7%</b>
Total Live Out/Total Out	77.60%	76.26%	77.02%	90.18%	81.42%	87.18%	
	2010	2011	2012	2013	2014	2015	
Live Outcome/Total Outcome	36.99%	43.43%	42.73%	57.98%	77.02%	87.18%	



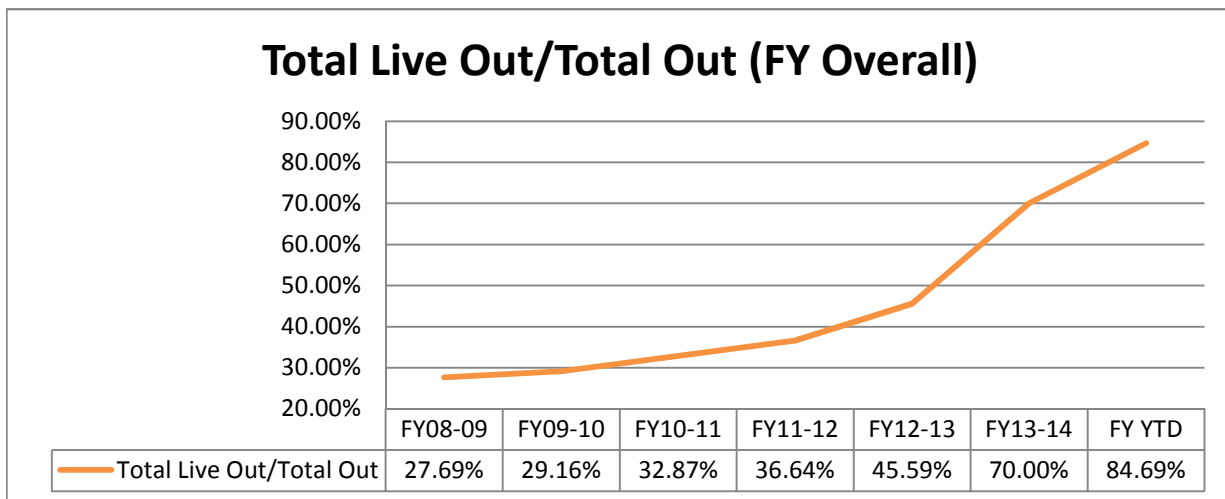
"Adoptions" in past years included some currently classified as "Sent to Rescue"

October 1st thru January 31st

	FY13-14			FY14-15			Change
	DOG	CAT	TOTAL	DOG	CAT	TOTAL	
<b>INTAKE</b>							
Owner Surrender	374	333	707	589	331	920	30.1%
Returns	83	40	123	95	18	113	-8.1%
Stray Over the Counter	681	1,355	2,036	633	1,030	1,663	-18.3%
Stray Impounded in Field	1,134	992	2,126	994	454	1,448	-31.9%
Confiscated/Investigations	145	24	169	186	18	204	20.7%
Abandoned & Transferred In	0	0	0	93	1	94	**
Born in Shelter	15	12	27	15	0	15	-44.4%
<b>LIVE INTAKE</b>	<b>2,432</b>	<b>2,756</b>	<b>5,188</b>	<b>2,605</b>	<b>1,852</b>	<b>4,457</b>	<b>-14.1%</b>
<b>OUTCOME</b>							
Adoption	1231	1274	2,505	1,475	970	2,445	-2.4%
Returned to Owner	362	50	412	287	18	305	-26.0%
Sent to Rescue	163	55	218	548	924	1,472	575.2%
Community Cat Returns		73	73		257	257	**
<b>Total Live Outcome</b>	<b>1,756</b>	<b>1,452</b>	<b>3,208</b>	<b>2,310</b>	<b>2,169</b>	<b>4,479</b>	<b>39.6%</b>
Died in Custody or Foster	35	57	92	19	98	117	27.2%
Euthanasia	614	1,186	1,800	402	287	689	-61.7%
Lost/Missing/Unaccounted For	1	5	6	1	3	4	-33.3%
<b>Non-Live Outcome</b>	<b>650</b>	<b>1,248</b>	<b>1,898</b>	<b>422</b>	<b>388</b>	<b>810</b>	<b>-57.3%</b>
<b>TOTAL OUTCOME</b>	<b>2,406</b>	<b>2,700</b>	<b>5,106</b>	<b>2,732</b>	<b>2,557</b>	<b>5,289</b>	<b>3.6%</b>
Total Live Out/Total Out	72.98%	53.78%	62.83%	84.55%	84.83%	84.69%	34.8%

2013 Adoption numbers include sent to rescue under old recordkeeping

	FY08-09	FY09-10	FY10-11	FY11-12	FY12-13	FY13-14	FY14-15
Total Live Intake	26,914	22,807	20,118	20,099	21,493	16,893	4,457
Live Outcome	7,446	6,649	6,624	7,340	10,021	11,707	4,479
Non Live Outcome	19,441	16,155	13,528	12,691	11,960	5,017	810
Total Outcome	26,887	22,804	20,152	20,031	21,981	16,724	5,289
	FY08-09	FY09-10	FY10-11	FY11-12	FY12-13	FY13-14	FY YTD
Total Live Out/Total Out	27.69%	29.16%	32.87%	36.64%	45.59%	70.00%	84.69%



"Adoptions" in past years included some currently classified as "Sent to Rescue"

TNVR Program

	Returned to Field	Euthanasia
Oct-14	52	11
Nov-14	38	3
Dec-14	60	14
Jan-15	49	11
Feb-15		
Mar-15		
Apr-15		
May-15		
Jun-15		
Jul-15		
Aug-15		
Sep-15		
FYI Totals	199	39

Affordable Sterilization Vouchers

	Redeemed	Issued
Oct-14	632	948
Nov-14	267	785
Dec-14	977	855
Jan-15	1033	319
Feb-15		
Mar-15		
Apr-15		
May-15		
Jun-15		
Jul-15		
Aug-15		
Sep-15		
FYI Totals	2909	2,907

License Tag Sales (Reported by Fiscal & Support Services)

	FY10-11	FY11-12	FY12-13	FY13-14	FY14-15	change
October	\$176,999	\$189,412	\$205,414	\$173,625	\$141,160	-18.70%
November	\$181,637	\$154,035	\$150,956	\$118,822	\$88,994	-25.10%
December	\$196,607	\$181,789	\$173,121	\$170,381	\$149,347	-12.35%
January	\$155,401	\$142,859	\$172,037	\$154,744	\$55,021	-64.44%
February	\$215,972	\$222,882	\$173,243	\$177,535		
March	\$253,862	\$207,043	\$224,642	\$187,225		
April	\$226,079	\$202,580	\$196,376	\$194,021		
May	\$222,142	\$231,426	\$226,391	\$127,320		
June	\$217,246	\$182,579	\$189,423	\$182,830		
July	\$231,030	\$224,613	\$86,202	\$123,986		
August	\$215,307	\$184,146	\$279,751	\$161,943		
September	\$216,604	\$185,485	\$171,112	\$174,260		
FYI Totals	\$2,508,886	\$2,308,849	\$2,248,668	\$1,946,692	\$434,522	



Monthly Report: February 2015

Period Covered: February 1st thru 28th, 2015

INTAKE	DOG	CAT	TOTAL
Owner Surrender	168	59	<b>227</b>
Returns	33	9	<b>42</b>
Stray Over the Counter	142	157	<b>299</b>
Stray Impounded in Field	235	95	<b>330</b>
Confiscated/Investigations	30	1	<b>31</b>
Abandoned & Transferred In	12	0	<b>12</b>
Born in Shelter	0	0	<b>0</b>
<b>LIVE INTAKE</b>	<b>620</b>	<b>321</b>	<b>941</b>
OUTCOME	DOG	CAT	TOTAL
Adoption	362	129	<b>491</b>
Returned to Owner	74	8	<b>82</b>
Transfer HSTB	0	0	<b>0</b>
Sent to Rescue	105	99	<b>204</b>
Community Cat Returns		59	<b>59</b>
<b>Total Live Outcome</b>	<b>541</b>	<b>295</b>	<b>836</b>
Died in Custody or Foster	9	6	<b>15</b>
Euthanasia	60	36	<b>96</b>
Lost/Missing/Unaccounted For	0	2	<b>2</b>
<b>Non-Live Outcome</b>	<b>69</b>	<b>44</b>	<b>113</b>
<b>TOTAL OUTCOME</b>	<b>610</b>	<b>339</b>	<b>949</b>
	DOG	CAT	TOTAL
Total Live Out/Total Out	88.69%	87.02%	88.09%
	DOG	CAT	TOTAL
Shelter Population	213	74	<b>287</b>
Animals in Foster Care	64	69	<b>133</b>
Total Inventory	<b>277</b>	<b>143</b>	<b>420</b>
	DOG	CAT	TOTAL
Sterilizations Completed	356	112	<b>468</b>
Surgery other than S/N	18	8	<b>26</b>
Exams	1,519	664	<b>2,183</b>
Unique Animals (Exams)	722	349	<b>1,071</b>
Treatments	5,528	1,826	<b>7,354</b>
Unique Animals (Treatments)	715	317	<b>1,032</b>
Care & Cleaning	6,070	2,148	<b>8,218</b>
Average Length of Stay	6.1	5.8	<b>in days</b>

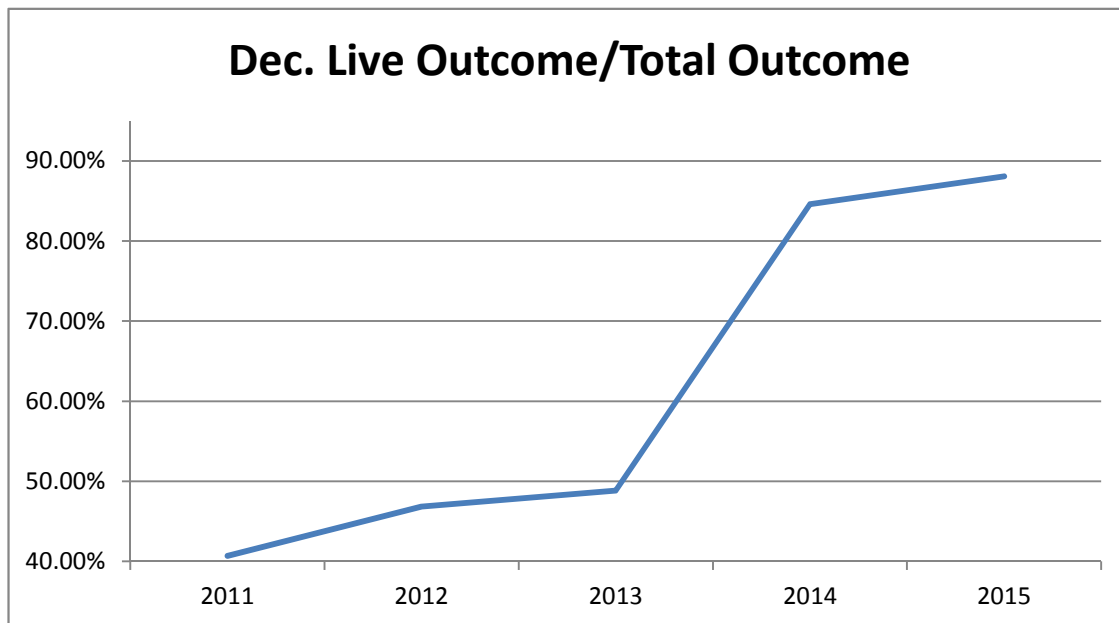
**Noteworthy Events:**

Best single week's results achieved  
Feb 23rd thru March 1st  
95.93% of Dogs Live Release  
89.33% of Cats Live Release  
93.43% Overall Live Release

Bite Case	151
Cruelty/Neglect	250
Dangerous Dog	1
Enforcement	287
Seizure	4
Stray	584
Transport	11
	<b>1,288</b>

Canine Spay	142
Canine Neuter	214
Feline Spay	55
Feline Neuter	57
<b>Sterilizations</b>	<b>468</b>

February 1-28, 2015	Last Year			Current			Change
	DOG	CAT	TOTAL	DOG	CAT	TOTAL	
<b>INTAKE</b>							
Owner Surrender	109	23	<b>132</b>	201	68	<b>269</b>	103.8%
Stray Over the Counter	110	145	<b>255</b>	142	157	<b>299</b>	17.3%
Stray Impounded in Field	215	150	<b>365</b>	235	95	<b>330</b>	-9.6%
Confiscated/Investigations	49	6	<b>55</b>	30	1	<b>31</b>	-43.6%
Abandoned & Transferred In	0	2	<b>2</b>	12	0	<b>12</b>	500.0%
Born in Shelter	0	0	<b>0</b>	0	0	<b>0</b>	**
<b>LIVE INTAKE</b>	<b>483</b>	<b>326</b>	<b>809</b>	<b>620</b>	<b>321</b>	<b>941</b>	16.3%
<b>OUTCOME</b>							
Adoption	388	470	<b>858</b>	362	129	<b>491</b>	-42.8%
Returned to Owner	71	11	<b>82</b>	74	8	<b>82</b>	0.0%
Transfer to HSTB	0	0	<b>0</b>	0	0	<b>0</b>	**
Sent to Rescue	3	3	<b>6</b>	105	99	<b>204</b>	3300.0%
Community Cat Returns		115	<b>115</b>		59	<b>59</b>	-48.7%
<b>Total Live Outcome</b>	<b>462</b>	<b>599</b>	<b>1,061</b>	<b>541</b>	<b>295</b>	<b>836</b>	-21.2%
Died in Custody or Foster	9	7	<b>16</b>	9	6	<b>15</b>	-6.3%
Euthanasia	131	46	<b>177</b>	60	36	<b>96</b>	-45.8%
Lost/Missing/Unaccounted For	0	0	<b>0</b>	0	2	<b>2</b>	**
<b>Non-Live Outcome</b>	<b>140</b>	<b>53</b>	<b>193</b>	<b>69</b>	<b>44</b>	<b>113</b>	-41.5%
<b>TOTAL OUTCOME</b>	<b>602</b>	<b>652</b>	<b>1,254</b>	<b>610</b>	<b>339</b>	<b>949</b>	-24.3%
Total Live Out/Total Out	76.74%	91.87%	84.61%	88.69%	87.02%	88.09%	
	2011	2012	2013	2014	2015		
Live Outcome/Total Outcome	40.69%	46.85%	48.84%	84.61%	88.09%		



"Adoptions" in past years included some currently classified as "Sent to Rescue"

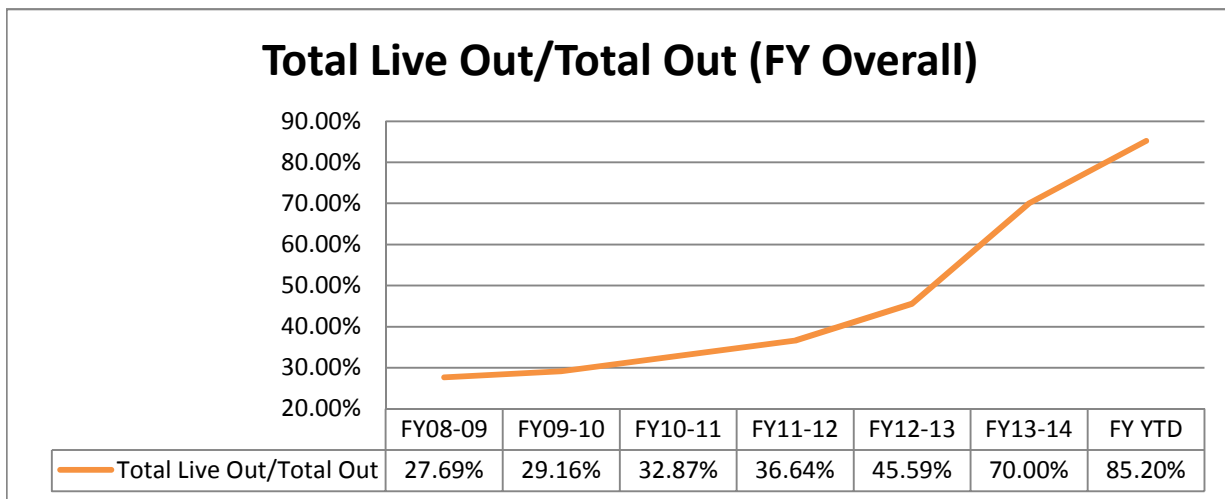
Special Note: 2014 numbers include pets from "transition" program moved to 'adopted'

October 1st thru February 28th

	FY13-14			FY14-15			Change
	DOG	CAT	TOTAL	DOG	CAT	TOTAL	
<b>INTAKE</b>							
Owner Surrender	566	356	922	757	390	1,147	24.4%
Returns	0	0	0	128	27	155	**
Stray Over the Counter	791	1,500	2,291	775	1,187	1,962	-14.4%
Stray Impounded in Field	1,349	1,142	2,491	1,229	549	1,778	-28.6%
Confiscated/Investigations	194	30	224	216	19	235	4.9%
Abandoned & Transferred In	0	2	2	105	1	106	**
Born in Shelter	15	15	30	15	0	15	-50.0%
<b>LIVE INTAKE</b>	<b>2,915</b>	<b>3,045</b>	<b>5,960</b>	<b>3,225</b>	<b>2,173</b>	<b>5,398</b>	<b>-9.4%</b>
<b>OUTCOME</b>							
Adoption	1619	1744	3,363	1,837	1,099	2,936	-12.7%
Returned to Owner	433	61	494	361	26	387	-21.7%
Sent to Rescue	166	58	224	653	1,023	1,676	648.2%
Community Cat Returns		188	188		316	316	**
<b>Total Live Outcome</b>	<b>2,218</b>	<b>2,051</b>	<b>4,269</b>	<b>2,851</b>	<b>2,464</b>	<b>5,315</b>	<b>24.5%</b>
Died in Custody or Foster	44	64	108	28	104	132	22.2%
Euthanasia	744	1,232	1,976	462	323	785	-60.3%
Lost/Missing/Unaccounted For	1	5	6	1	5	6	0.0%
<b>Non-Live Outcome</b>	<b>789</b>	<b>1,301</b>	<b>2,090</b>	<b>491</b>	<b>432</b>	<b>923</b>	<b>-55.8%</b>
<b>TOTAL OUTCOME</b>	<b>3,007</b>	<b>3,352</b>	<b>6,359</b>	<b>3,342</b>	<b>2,896</b>	<b>6,238</b>	<b>-1.9%</b>
Total Live Out/Total Out	73.76%	61.19%	67.13%	85.31%	85.08%	85.20%	26.9%

2013 Adoption numbers include sent to rescue under old recordkeeping

	FY08-09	FY09-10	FY10-11	FY11-12	FY12-13	FY13-14	FY14-15
Total Live Intake	26,914	22,807	20,118	20,099	21,493	16,893	5,398
Live Outcome	7,446	6,649	6,624	7,340	10,021	11,707	5,315
Non Live Outcome	19,441	16,155	13,528	12,691	11,960	5,017	923
Total Outcome	26,887	22,804	20,152	20,031	21,981	16,724	6,238
	FY08-09	FY09-10	FY10-11	FY11-12	FY12-13	FY13-14	FY YTD
Total Live Out/Total Out	27.69%	29.16%	32.87%	36.64%	45.59%	70.00%	85.20%



"Adoptions" in past years included some currently classified as "Sent to Rescue"

TNVR Program

	Returned to Field	Euthanasia
Oct-14	52	11
Nov-14	38	3
Dec-14	60	14
Jan-15	49	11
Feb-15	49	6
Mar-15		
Apr-15		
May-15		
Jun-15		
Jul-15		
Aug-15		
Sep-15		
FYI Totals	248	45

Affordable Sterilization Vouchers

	Redeemed	Issued
Oct-14	632	948
Nov-14	267	785
Dec-14	977	855
Jan-15	1033	319
Feb-15	666	976
Mar-15		
Apr-15		
May-15		
Jun-15		
Jul-15		
Aug-15		
Sep-15		
FYI Totals	3575	3,883

License Tag Sales (Reported by Fiscal & Support Services)

	FY10-11	FY11-12	FY12-13	FY13-14	FY14-15	change
October	\$176,999	\$189,412	\$205,414	\$173,625	\$141,160	-18.70%
November	\$181,637	\$154,035	\$150,956	\$118,822	\$88,994	-25.10%
December	\$196,607	\$181,789	\$173,121	\$170,381	\$149,347	-12.35%
January	\$155,401	\$142,859	\$172,037	\$154,744	\$55,021	-64.44%
February	\$215,972	\$222,882	\$173,243	\$177,535	\$86,716	-51.16%
March	\$253,862	\$207,043	\$224,642	\$187,225		
April	\$226,079	\$202,580	\$196,376	\$194,021		
May	\$222,142	\$231,426	\$226,391	\$127,320		
June	\$217,246	\$182,579	\$189,423	\$182,830		
July	\$231,030	\$224,613	\$86,202	\$123,986		
August	\$215,307	\$184,146	\$279,751	\$161,943		
September	\$216,604	\$185,485	\$171,112	\$174,260		
FYI Totals	\$2,508,886	\$2,308,849	\$2,248,668	\$1,946,692	\$521,238	

Monthly Report: March 2015

Period Covered: March 1st thru 31st, 2015

<b>INTAKE</b>	DOG	CAT	TOTAL
Owner Surrender	176	97	<b>273</b>
Returns	21	5	<b>26</b>
Stray Over the Counter	164	185	<b>349</b>
Stray Impounded in Field	304	126	<b>430</b>
Confiscated/Investigations	22	0	<b>22</b>
Abandoned & Transferred In	23	0	<b>23</b>
Born in Shelter	5	9	<b>14</b>
<b>LIVE INTAKE</b>	<b>715</b>	<b>422</b>	<b>1,137</b>
<b>OUTCOME</b>	DOG	CAT	TOTAL
Adoption	407	126	<b>533</b>
Returned to Owner	101	5	<b>106</b>
Transfer HSTB	0	0	<b>0</b>
Sent to Rescue	125	126	<b>251</b>
Community Cat Returns		49	<b>49</b>
<b>Total Live Outcome</b>	<b>633</b>	<b>306</b>	<b>939</b>
Died in Custody or Foster	5	17	<b>22</b>
Euthanasia	76	46	<b>122</b>
Lost/Missing/Unaccounted For	0	1	<b>1</b>
<b>Non-Live Outcome</b>	<b>81</b>	<b>64</b>	<b>145</b>
<b>TOTAL OUTCOME</b>	<b>714</b>	<b>370</b>	<b>1,084</b>

**Noteworthy Events:**

Bite Case	173
Cruelty/Neglect	274
Dangerous Dog	2
Enforcement	294
Seizure	12
Stray	640
Transport	10
	<b>1,405</b>

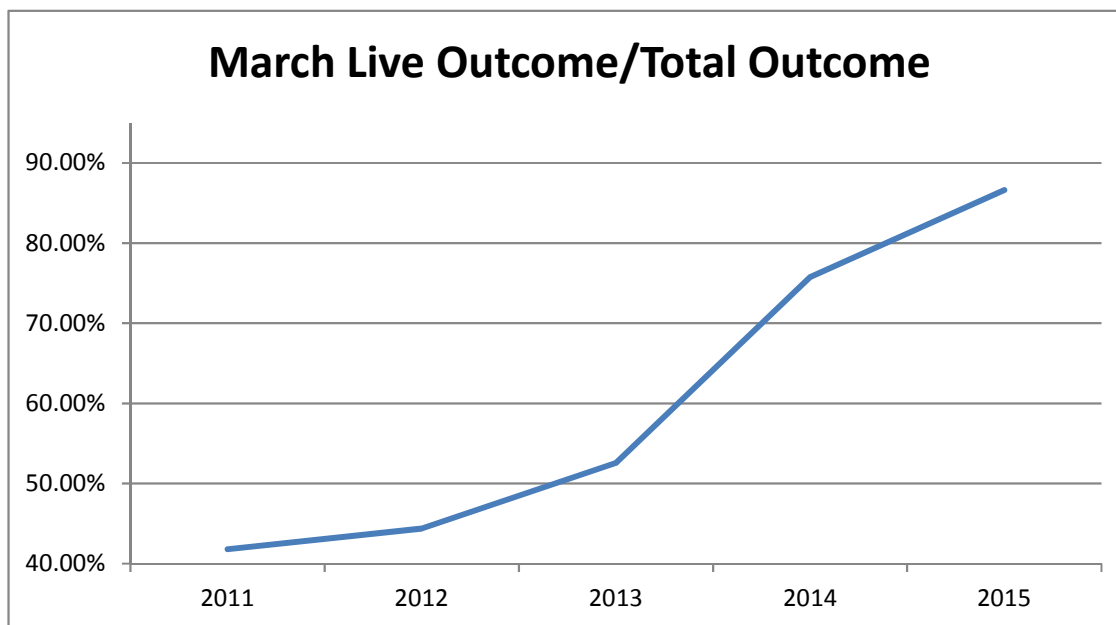
	DOG	CAT	TOTAL
Total Live Out/Total Out	88.66%	82.70%	86.62%

	DOG	CAT	TOTAL
Shelter Population	231	106	<b>337</b>
Animals in Foster Care	46	91	<b>137</b>
Total Inventory	<b>277</b>	<b>197</b>	<b>474</b>

	DOG	CAT	TOTAL
Sterilizations Completed	375	174	<b>549</b>
Surgery other than S/N	12	10	<b>22</b>
Exams	1,688	740	<b>2,428</b>
Unique Animals (Exams)	822	422	<b>1,244</b>
Treatments	5,157	1,446	<b>6,603</b>
Unique Animals (Treatments)	810	378	<b>1,188</b>
Care & Cleaning	7,168	2,282	<b>9,450</b>
Average Length of Stay	6.6	6.9	<b>in days</b>

Canine Spay	180
Canine Neuter	195
Feline Spay	81
Feline Neuter	93
<b>Sterilizations</b>	<b>549</b>

March 1-31, 2015	Last Year			Current			Change
	DOG	CAT	TOTAL	DOG	CAT	TOTAL	
<b>INTAKE</b>							
Owner Surrender	202	46	<b>248</b>	197	102	<b>299</b>	20.6%
Stray Over the Counter	209	271	<b>480</b>	164	185	<b>349</b>	-27.3%
Stray Impounded in Field	265	243	<b>508</b>	304	126	<b>430</b>	-15.4%
Confiscated/Investigations	19	1	<b>20</b>	22	0	<b>22</b>	10.0%
Abandoned & Transferred In	25	0	<b>25</b>	23	0	<b>23</b>	-8.0%
Born in Shelter	9	27	<b>36</b>	5	9	<b>14</b>	-61.1%
<b>LIVE INTAKE</b>	<b>729</b>	<b>588</b>	<b>1,317</b>	<b>715</b>	<b>422</b>	<b>1,137</b>	-13.7%
<b>OUTCOME</b>							
Adoption	368	133	<b>501</b>	407	126	<b>533</b>	6.4%
Returned to Owner	104	12	<b>116</b>	101	5	<b>106</b>	-8.6%
Transfer to HSTB	0	0	<b>0</b>	0	0	<b>0</b>	**
Sent to Rescue	128	185	<b>313</b>	125	126	<b>251</b>	-19.8%
Community Cat Returns		115	<b>115</b>		49	<b>49</b>	-57.4%
<b>Total Live Outcome</b>	<b>600</b>	<b>445</b>	<b>1,045</b>	<b>633</b>	<b>306</b>	<b>939</b>	-10.1%
Died in Custody or Foster	11	11	<b>22</b>	5	17	<b>22</b>	0.0%
Euthanasia	184	126	<b>310</b>	76	46	<b>122</b>	-60.6%
Lost/Missing/Unaccounted For	1	1	<b>2</b>	0	1	<b>1</b>	-50.0%
<b>Non-Live Outcome</b>	<b>196</b>	<b>138</b>	<b>334</b>	<b>81</b>	<b>64</b>	<b>145</b>	-56.6%
<b>TOTAL OUTCOME</b>	<b>796</b>	<b>583</b>	<b>1,379</b>	<b>714</b>	<b>370</b>	<b>1,084</b>	-21.4%
Total Live Out/Total Out	75.38%	76.33%	75.78%	88.66%	82.70%	86.62%	
	2011	2012	2013	2014	2015		
Live Outcome/Total Outcome	41.78%	44.36%	52.54%	75.78%	86.62%		



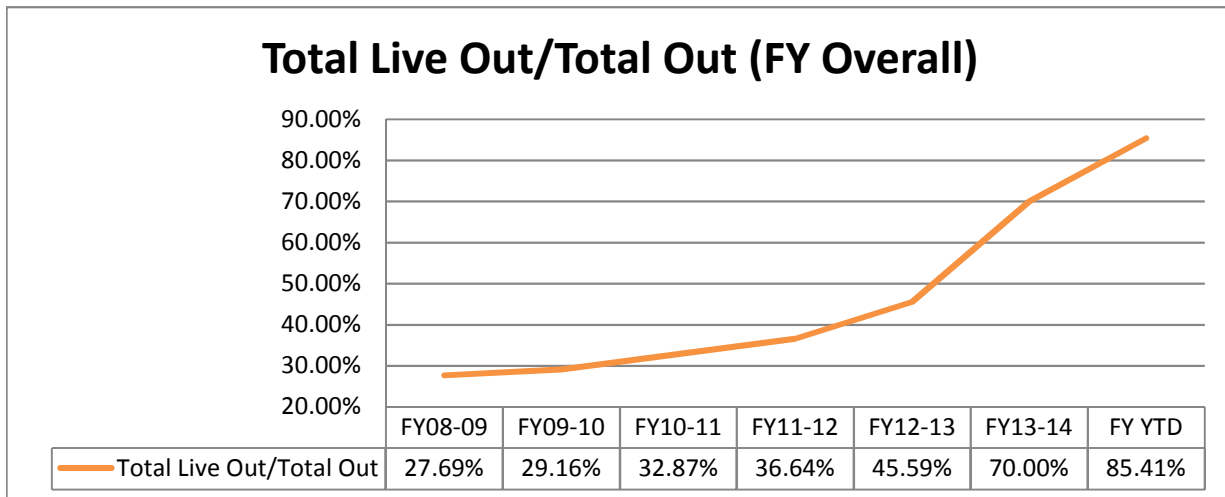
"Adoptions" in past years included some currently classified as "Sent to Rescue"

Special Note: 2014 numbers include pets from "transition" program moved to 'adopted'

October 1st thru March 31st

	FY13-14			FY14-15			Change
	DOG	CAT	TOTAL	DOG	CAT	TOTAL	
<b>INTAKE</b>							
Owner Surrender	768	402	<b>1,170</b>	933	487	<b>1,420</b>	21.4%
Returns	**	**	<b>0</b>	149	32	<b>181</b>	**
Stray Over the Counter	1,000	1,771	<b>2,771</b>	939	1,372	<b>2,311</b>	-16.6%
Stray Impounded in Field	1,614	1,385	<b>2,999</b>	1,533	675	<b>2,208</b>	-26.4%
Confiscated/Investigations	213	31	<b>244</b>	238	19	<b>257</b>	5.3%
Abandoned & Transferred In	25	2	<b>27</b>	128	1	<b>129</b>	377.8%
Born in Shelter	24	42	<b>66</b>	20	9	<b>29</b>	-56.1%
<b>LIVE INTAKE</b>	<b>3,644</b>	<b>3,633</b>	<b>7,277</b>	<b>3,940</b>	<b>2,595</b>	<b>6,535</b>	-10.2%
<b>OUTCOME</b>							
Adoption	1987	1877	<b>3,864</b>	2,244	1,225	<b>3,469</b>	-10.2%
Returned to Owner	537	73	<b>610</b>	462	31	<b>493</b>	-19.2%
Sent to Rescue	294	243	<b>537</b>	778	1,149	<b>1,927</b>	258.8%
Community Cat Returns		303	<b>303</b>		365	<b>365</b>	20.5%
<b>Total Live Outcome</b>	<b>2,818</b>	<b>2,496</b>	<b>5,314</b>	<b>3,484</b>	<b>2,770</b>	<b>6,254</b>	17.7%
Died in Custody or Foster	55	75	<b>130</b>	33	121	<b>154</b>	18.5%
Euthanasia	929	1,358	<b>2,287</b>	538	369	<b>907</b>	-60.3%
Lost/Missing/Unaccounted For	2	6	<b>8</b>	1	6	<b>7</b>	-12.5%
<b>Non-Live Outcome</b>	<b>986</b>	<b>1,439</b>	<b>2,425</b>	<b>572</b>	<b>496</b>	<b>1,068</b>	-56.0%
<b>TOTAL OUTCOME</b>	<b>3,804</b>	<b>3,935</b>	<b>7,739</b>	<b>4,056</b>	<b>3,266</b>	<b>7,322</b>	-5.4%
Total Live Out/Total Out	74.08%	63.43%	68.67%	85.90%	84.81%	85.41%	24.4%

	FY08-09	FY09-10	FY10-11	FY11-12	FY12-13	FY13-14	FY14-15
Total Live Intake	26,914	22,807	20,118	20,099	21,493	16,893	6,535
Live Outcome	7,446	6,649	6,624	7,340	10,021	11,707	6,254
Non Live Outcome	19,441	16,155	13,528	12,691	11,960	5,017	1,068
Total Outcome	26,887	22,804	20,152	20,031	21,981	16,724	7,322
	FY08-09	FY09-10	FY10-11	FY11-12	FY12-13	FY13-14	FY YTD
Total Live Out/Total Out	27.69%	29.16%	32.87%	36.64%	45.59%	70.00%	85.41%



"Adoptions" in past years included some currently classified as "Sent to Rescue"

TNVR Program

	Returned to Field	Euthanasia
Oct-14	52	11
Nov-14	38	3
Dec-14	60	14
Jan-15	49	11
Feb-15	49	6
Mar-15	47	9
Apr-15		
May-15		
Jun-15		
Jul-15		
Aug-15		
Sep-15		
FYI Totals	295	54

Affordable Sterilization Vouchers

	Redeemed	Issued
Oct-14	632	948
Nov-14	267	785
Dec-14	977	855
Jan-15	1033	319
Feb-15	666	976
Mar-15	708	1085
Apr-15		
May-15		
Jun-15		
Jul-15		
Aug-15		
Sep-15		
FYI Totals	4283	4,968

License Tag Sales (Reported by Fiscal & Support Services)

	FY10-11	FY11-12	FY12-13	FY13-14	FY14-15	change
October	\$176,999	\$189,412	\$205,414	\$173,625	\$141,160	-18.70%
November	\$181,637	\$154,035	\$150,956	\$118,822	\$88,994	-25.10%
December	\$196,607	\$181,789	\$173,121	\$170,381	\$149,347	-12.35%
January	\$155,401	\$142,859	\$172,037	\$154,744	\$55,021	-64.44%
February	\$215,972	\$222,882	\$173,243	\$177,535	\$86,716	-51.16%
March	\$253,862	\$207,043	\$224,642	\$187,225	\$164,747	-12.01%
April	\$226,079	\$202,580	\$196,376	\$194,021		
May	\$222,142	\$231,426	\$226,391	\$127,320		
June	\$217,246	\$182,579	\$189,423	\$182,830		
July	\$231,030	\$224,613	\$86,202	\$123,986		
August	\$215,307	\$184,146	\$279,751	\$161,943		
September	\$216,604	\$185,485	\$171,112	\$174,260		
FYI Totals	\$2,508,886	\$2,308,849	\$2,248,668	\$1,946,692	\$685,985	



Monthly Report: April 2015

Period Covered: April 1st thru 30th, 2015

INTAKE	DOG	CAT	TOTAL
Owner Surrender	194	134	<b>328</b>
Returns	17	2	<b>19</b>
Stray Over the Counter	148	348	<b>496</b>
Stray Impounded in Field	270	165	<b>435</b>
Confiscated/Investigations	15	26	<b>41</b>
Abandoned & Transferred In	21	0	<b>21</b>
Born in Shelter	0	0	<b>0</b>
<b>LIVE INTAKE</b>	<b>665</b>	<b>675</b>	<b>1,340</b>
OUTCOME	DOG	CAT	TOTAL
Adoption	360	141	<b>501</b>
Returned to Owner	53	3	<b>56</b>
Transfer HSTB	0	0	<b>0</b>
Sent to Rescue	103	117	<b>220</b>
Community Cat Returns		51	<b>51</b>
<b>Total Live Outcome</b>	<b>516</b>	<b>312</b>	<b>828</b>
Died in Custody/Transport	0	1	<b>1</b>
Died in Foster/Rescue	1	11	<b>12</b>
Died Offsite/Unspecified	1	2	<b>3</b>
Euthanasia	101	77	<b>178</b>
Euth: Neonatal/Too Young	0	35	<b>35</b>
Lost/Missing/Unaccounted For	1	0	<b>1</b>
<b>Non-Live Outcome</b>	<b>104</b>	<b>126</b>	<b>230</b>
<b>TOTAL OUTCOME</b>	<b>620</b>	<b>438</b>	<b>1,058</b>

**Noteworthy Events:**

Added breakdown in stats for "died" animals to show in custody, foster, and offsite or undesignated.

Also added Neonatal and Too Young Euthanasia as separate subset due to increased numbers of kittens that enter April-August creating an increase in euthanasia that is very specific

	DOG	CAT	TOTAL
Total Live Out/Total Out	83.23%	71.23%	78.26%

	DOG	CAT	TOTAL
Shelter Population	270	107	<b>377</b>
Animals in Foster Care	51	325	<b>376</b>
Total Inventory	<b>321</b>	<b>432</b>	<b>753</b>

	DOG	CAT	TOTAL
Sterilizations Completed	353	172	<b>525</b>
Surgery other than S/N	10	13	<b>23</b>
Exams	1,534	1,296	<b>2,830</b>
Unique Animals (Exams)	804	691	<b>1,495</b>
Treatments	4,909	2,591	<b>7,500</b>
Unique Animals (Treatments)	794	569	<b>1,363</b>
Care & Cleaning	7,687	3,762	<b>11,449</b>
Average Length of Stay	7.8	10.8	<b>in days</b>

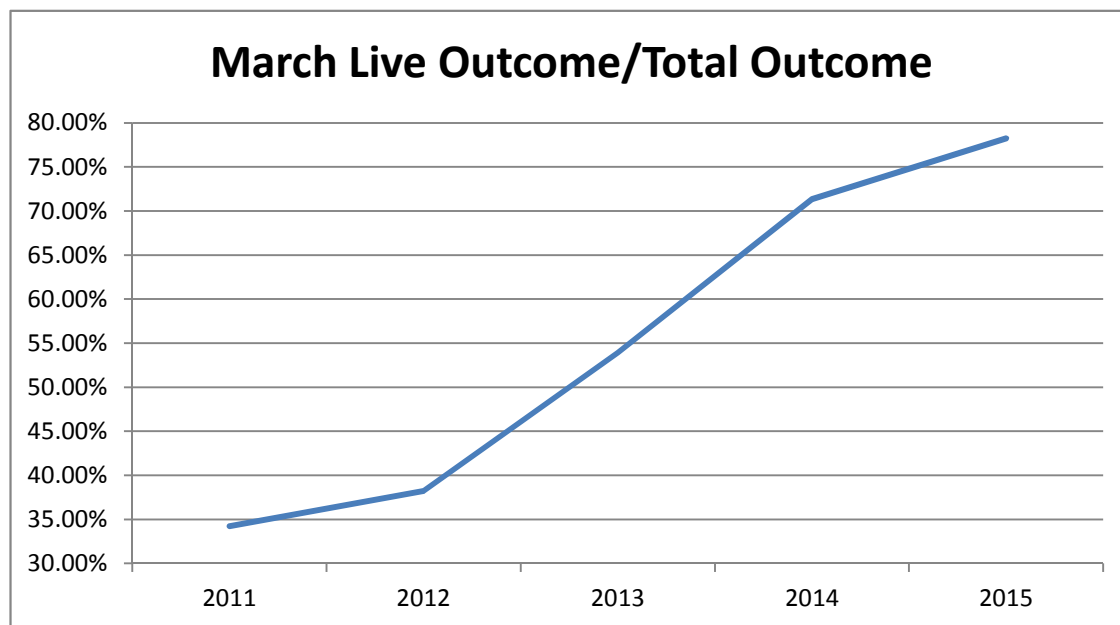
Heartworm Treatments	7
----------------------	---

RTO in Field	8
Bite Case	158
Cruelty/Neglect	299
Dangerous Dog	5
Enforcement	248
Seizure	12
Stray	722
Transport	11
	<b>1,463</b>

Canine Spay	178
Canine Neuter	175
Feline Spay	87
Feline Neuter	85
<b>Sterilizations</b>	<b>525</b>

April 1-30, 2015	Last Year			Current			Change
	DOG	CAT	TOTAL	DOG	CAT	TOTAL	
<b>INTAKE</b>							
Owner Surrender	168	98	<b>266</b>	211	136	<b>347</b>	30.5%
Stray Over the Counter	173	331	<b>504</b>	148	348	<b>496</b>	-1.6%
Stray Impounded in Field	266	332	<b>598</b>	270	165	<b>435</b>	-27.3%
Confiscated/Investigations	27	0	<b>27</b>	16	26	<b>42</b>	55.6%
Abandoned & Transferred In	17	0	<b>17</b>	21	0	<b>21</b>	23.5%
Born in Shelter	12	54	<b>66</b>	0	0	<b>0</b>	-100.0%
<b>LIVE INTAKE</b>	<b>663</b>	<b>815</b>	<b>1,478</b>	<b>666</b>	<b>675</b>	<b>1,341</b>	-9.3%
<b>OUTCOME</b>							
Adoption	331	116	<b>447</b>	360	141	<b>501</b>	12.1%
Returned to Owner	80	8	<b>88</b>	53	3	<b>56</b>	-36.4%
Transfer to HSTB	0	0	<b>0</b>	0	0	<b>0</b>	**
Sent to Rescue	107	82	<b>189</b>	103	117	<b>220</b>	16.4%
Community Cat Returns		107	<b>107</b>		51	<b>51</b>	-52.3%
<b>Total Live Outcome</b>	<b>518</b>	<b>313</b>	<b>831</b>	<b>516</b>	<b>312</b>	<b>828</b>	-0.4%
Died in Custody/Transport	8	17	<b>25</b>	2	14	<b>16</b>	-36.0%
Euthanasia	101	202	<b>303</b>	101	112	<b>213</b>	-29.7%
Lost/Missing/Unaccounted For	3	3	<b>6</b>	1	0	<b>1</b>	-83.3%
<b>Non-Live Outcome</b>	<b>112</b>	<b>222</b>	<b>334</b>	<b>104</b>	<b>126</b>	<b>230</b>	-31.1%
<b>TOTAL OUTCOME</b>	<b>630</b>	<b>535</b>	<b>1,165</b>	<b>620</b>	<b>438</b>	<b>1,058</b>	-9.2%
Total Live Out/Total Out	82.22%	58.50%	71.33%	83.23%	71.23%	78.26%	

	2011	2012	2013	2014	2015
Live Outcome/Total Outcome	34.22%	38.21%	53.90%	71.33%	78.26%



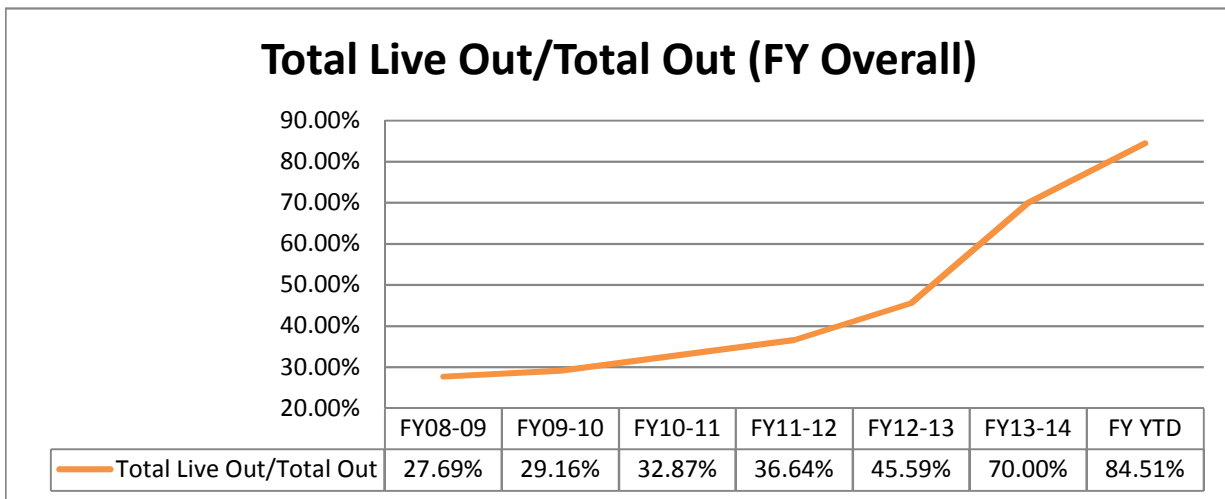
"Adoptions" in past years included some currently classified as "Sent to Rescue"

Special Note: 2014 numbers include pets from "transition" program moved to 'adopted'

October 1st thru April 30st

	FY13-14			FY14-15			Change
	DOG	CAT	TOTAL	DOG	CAT	TOTAL	
<b>INTAKE</b>							
Owner Surrender	936	500	<b>1,436</b>	1,293	655	<b>1,948</b>	35.7%
Stray Over the Counter	1,173	2,102	<b>3,275</b>	1,087	1,720	<b>2,807</b>	-14.3%
Stray Impounded in Field	1,880	1,767	<b>3,647</b>	1,803	840	<b>2,643</b>	-27.5%
Confiscated/Investigations	240	31	<b>271</b>	253	45	<b>298</b>	10.0%
Abandoned & Transferred In	42	2	<b>44</b>	149	1	<b>150</b>	240.9%
Born in Shelter	36	96	<b>132</b>	20	9	<b>29</b>	-78.0%
<b>LIVE INTAKE</b>	<b>4,307</b>	<b>4,498</b>	<b>8,805</b>	<b>4,605</b>	<b>3,270</b>	<b>7,875</b>	-10.6%
<b>OUTCOME</b>							
Adoption	2,318	1,993	<b>4,311</b>	2,604	1,366	<b>3,970</b>	-7.9%
Returned to Owner	617	81	<b>698</b>	515	34	<b>549</b>	-21.3%
Sent to Rescue	401	325	<b>726</b>	881	1,266	<b>2,147</b>	195.7%
Community Cat Returns		410	<b>410</b>		416	<b>416</b>	1.5%
<b>Total Live Outcome</b>	<b>3,336</b>	<b>2,809</b>	<b>6,145</b>	<b>4,000</b>	<b>3,082</b>	<b>7,082</b>	15.2%
Died in Custody, Foster, Offsite	63	92	<b>155</b>	35	135	<b>170</b>	9.7%
Euthanasia	1,030	1,560	<b>2,590</b>	639	481	<b>1,120</b>	-56.8%
Lost/Missing/Unaccounted For	5	9	<b>14</b>	2	6	<b>8</b>	-42.9%
<b>Non-Live Outcome</b>	<b>1,098</b>	<b>1,661</b>	<b>2,759</b>	<b>676</b>	<b>622</b>	<b>1,298</b>	-53.0%
<b>TOTAL OUTCOME</b>	<b>4,434</b>	<b>4,470</b>	<b>8,904</b>	<b>4,676</b>	<b>3,704</b>	<b>8,380</b>	-5.9%
Total Live Out/Total Out	75.24%	62.84%	69.01%	85.54%	83.21%	84.51%	22.5%

	FY08-09	FY09-10	FY10-11	FY11-12	FY12-13	FY13-14	FY14-15
Total Live Intake	26,914	22,807	20,118	20,099	21,493	16,893	7,875
Live Outcome	7,446	6,649	6,624	7,340	10,021	11,707	7,082
Non Live Outcome	19,441	16,155	13,528	12,691	11,960	5,017	1,298
Total Outcome	26,887	22,804	20,152	20,031	21,981	16,724	8,380
	FY08-09	FY09-10	FY10-11	FY11-12	FY12-13	FY13-14	FY YTD
Total Live Out/Total Out	27.69%	29.16%	32.87%	36.64%	45.59%	70.00%	84.51%



"Adoptions" in past years included some currently classified as "Sent to Rescue"

TNVR Program

	Returned to Field	Euthanasia
Oct-14	52	11
Nov-14	38	3
Dec-14	60	14
Jan-15	49	11
Feb-15	49	6
Mar-15	47	9
Apr-15	36	10
May-15		
Jun-15		
Jul-15		
Aug-15		
Sep-15		
FYI Totals	331	64

Affordable Sterilization Vouchers

	Redeemed	Issued
Oct-14	632	948
Nov-14	267	785
Dec-14	977	855
Jan-15	1033	319
Feb-15	666	976
Mar-15	708	1085
Apr-15	406	943
May-15		
Jun-15		
Jul-15		
Aug-15		
Sep-15		
FYI Totals	4689	5,911

License Tag Sales (Reported by Fiscal & Support Services)

	FY10-11	FY11-12	FY12-13	FY13-14	FY14-15	change
October	\$176,999	\$189,412	\$205,414	\$173,625	\$141,160	-18.70%
November	\$181,637	\$154,035	\$150,956	\$118,822	\$88,994	-25.10%
December	\$196,607	\$181,789	\$173,121	\$170,381	\$149,347	-12.35%
January	\$155,401	\$142,859	\$172,037	\$154,744	\$55,021	-64.44%
February	\$215,972	\$222,882	\$173,243	\$177,535	\$86,716	-51.16%
March	\$253,862	\$207,043	\$224,642	\$187,225	\$164,747	-12.01%
April	\$226,079	\$202,580	\$196,376	\$194,021	\$71,725	-63.03%
May	\$222,142	\$231,426	\$226,391	\$127,320		
June	\$217,246	\$182,579	\$189,423	\$182,830		
July	\$231,030	\$224,613	\$86,202	\$123,986		
August	\$215,307	\$184,146	\$279,751	\$161,943		
September	\$216,604	\$185,485	\$171,112	\$174,260		
FYI Totals	\$2,508,886	\$2,308,849	\$2,248,668	\$1,946,692	\$757,710	

Monthly Report: May 2015

Period Covered: May 1st thru 31st, 2015

INTAKE	DOG	CAT	TOTAL
Owner Surrender	169	175	<b>344</b>
Returns	27	2	<b>29</b>
Stray Over the Counter	149	403	<b>552</b>
Stray Impounded in Field	287	160	<b>447</b>
Confiscated/Investigations	12	4	<b>16</b>
Abandoned & Transferred In	11	0	<b>11</b>
Born in Shelter	0	0	<b>0</b>
<b>LIVE INTAKE</b>	<b>655</b>	<b>744</b>	<b>1,399</b>
OUTCOME	DOG	CAT	TOTAL
Adoption	384	240	<b>624</b>
Returned to Owner	65	8	<b>73</b>
Transfer HSTB	15	0	<b>15</b>
Sent to Rescue	65	124	<b>189</b>
Community Cat Returns		46	<b>46</b>
<b>Total Live Outcome</b>	<b>529</b>	<b>418</b>	<b>947</b>
Died in Custody/Transport	6	2	<b>8</b>
Died in Foster/Rescue	0	17	<b>17</b>
Died Offsite/Unspecified	0	0	<b>0</b>
Euthanasia	120	123	<b>243</b>
Euth: Neonatal/Too Young	0	65	<b>65</b>
Lost/Missing/Unaccounted For	0	0	<b>0</b>
<b>Non-Live Outcome</b>	<b>126</b>	<b>207</b>	<b>333</b>
<b>TOTAL OUTCOME</b>	<b>655</b>	<b>625</b>	<b>1,280</b>

**Noteworthy Events:**

Heartworm treatment medication is on manufacturer backorder. Many treatments are backlogged and for long-time resident dogs over 30% are currently heartworm positive.

	DOG	CAT	TOTAL
Total Live Out/Total Out	80.76%	66.88%	73.98%

	DOG	CAT	TOTAL
Shelter Population	266	154	<b>420</b>
Animals in Foster Care	55	397	<b>452</b>
Total Inventory	<b>321</b>	<b>551</b>	<b>872</b>

	DOG	CAT	TOTAL
Sterilizations Completed	294	250	<b>544</b>
Surgery other than S/N	5	5	<b>10</b>
Exams	1,419	1,367	<b>2,786</b>
Unique Animals (Exams)	748	760	<b>1,508</b>
Treatments	4,548	3,483	<b>8,031</b>
Unique Animals (Treatments)	752	649	<b>1,401</b>
Care & Cleaning	8,586	4,481	<b>13,067</b>
Average Length of Stay	7.9	8.2	<b>in days</b>

Heartworm Treatments	5
----------------------	---

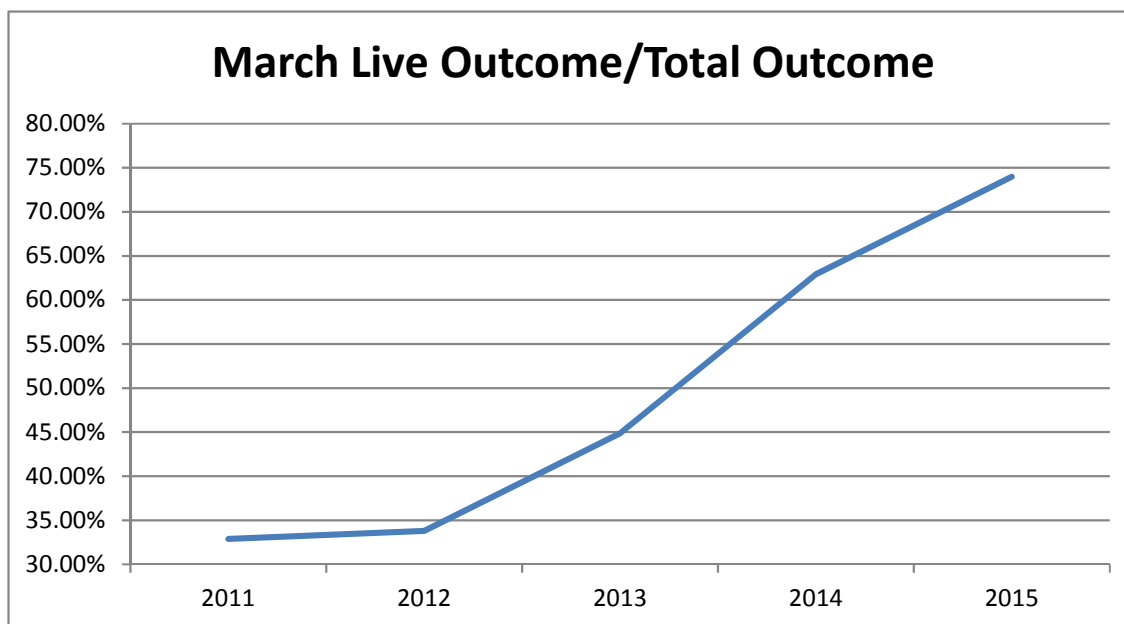
RTO in Field	8
Bite Case	164
Cruelty/Neglect	296
Dangerous Dog	0
Enforcement	254
Seizure	6
Stray	634
Transport	10
	<b>1,372</b>

Canine Neuter	174
Canine Spay	120
Feline Neuter	115
Feline Spay	135
<b>Sterilizations</b>	<b>544</b>

May 1-31, 2015	Last Year			Current			Change
	DOG	CAT	TOTAL	DOG	CAT	TOTAL	
<b>INTAKE</b>							
Owner Surrender	157	61	218	169	175	344	57.8%
Returns	15	5	20	27	2	29	45.0%
Stray Over the Counter	196	524	720	149	403	552	-23.3%
Stray Impounded in Field	288	490	778	287	160	447	-42.5%
Confiscated/Investigations	39	20	59	12	4	16	-72.9%
Abandoned & Transferred In	19	0	19	11	0	11	-42.1%
Born in Shelter	0	39	39	0	0	0	-100.0%
<b>LIVE INTAKE</b>	<b>714</b>	<b>1,139</b>	<b>1,853</b>	<b>655</b>	<b>744</b>	<b>1,399</b>	<b>-24.5%</b>
<b>OUTCOME</b>							
Adoption	330	205	535	384	240	624	16.6%
Returned to Owner	89	13	102	65	8	73	-28.4%
Transfer to HSTB	0	0	0	15	0	15	100.0%
Sent to Rescue	139	117	256	65	124	189	-26.2%
Community Cat Returns		113	113		46	46	-59.3%
<b>Total Live Outcome</b>	<b>558</b>	<b>448</b>	<b>1,006</b>	<b>529</b>	<b>418</b>	<b>947</b>	<b>-5.9%</b>
Died in Custody/Transport	8	40	48	6	19	25	-47.9%
Euthanasia	154	386	540	120	188	308	-43.0%
Lost/Missing/Unaccounted For	0	5	5	0	0	0	-100.0%
<b>Non-Live Outcome</b>	<b>162</b>	<b>431</b>	<b>593</b>	<b>126</b>	<b>207</b>	<b>333</b>	<b>-43.8%</b>
<b>TOTAL OUTCOME</b>	<b>720</b>	<b>879</b>	<b>1,599</b>	<b>655</b>	<b>625</b>	<b>1,280</b>	<b>-19.9%</b>
Total Live Out/Total Out	77.50%	50.97%	62.91%	80.76%	66.88%	73.98%	

	2011	2012	2013	2014	2015
Live Outcome/Total Outcome	32.87%	33.78%	44.87%	62.91%	73.98%



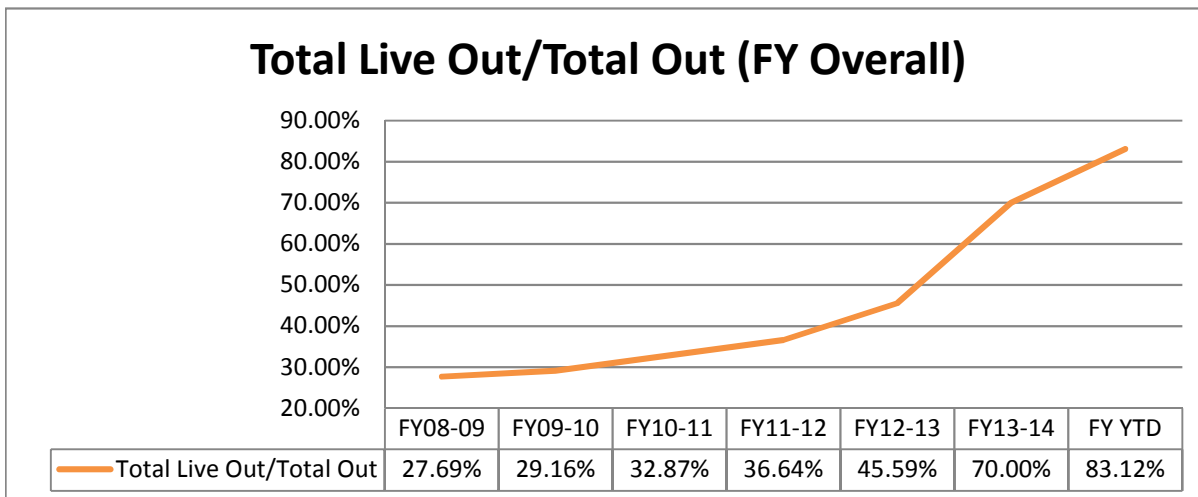
"Adoptions" in past years included some currently classified as "Sent to Rescue"

Special Note: 2014 numbers include pets from "transition" program moved to 'adopted'

October 1st thru May 31st

	FY13-14			FY14-15			Change
	DOG	CAT	TOTAL	DOG	CAT	TOTAL	
<b>INTAKE</b>							
Owner Surrender	1,107	566	<b>1,673</b>	1,489	822	<b>2,311</b>	38.1%
Stray Over the Counter	1,369	2,626	<b>3,995</b>	1,236	2,123	<b>3,359</b>	-15.9%
Stray Impounded in Field	2,168	2,257	<b>4,425</b>	2,090	1,000	<b>3,090</b>	-30.2%
Confiscated/Investigations	279	51	<b>330</b>	265	49	<b>314</b>	-4.8%
Abandoned & Transferred In	61	2	<b>63</b>	160	1	<b>161</b>	155.6%
Born in Shelter	49	135	<b>184</b>	20	9	<b>29</b>	-84.2%
<b>LIVE INTAKE</b>	<b>5,033</b>	<b>5,637</b>	<b>10,670</b>	<b>5,260</b>	<b>4,004</b>	<b>9,264</b>	-13.2%
<b>OUTCOME</b>							
Adoption	2,648	2,198	<b>4,846</b>	2,988	1,606	<b>4,594</b>	-5.2%
Returned to Owner	706	94	<b>800</b>	580	42	<b>622</b>	-22.3%
Sent to Rescue	540	442	<b>982</b>	961	1,390	<b>2,351</b>	139.4%
Community Cat Returns		523	<b>523</b>		462	<b>462</b>	-11.7%
<b>Total Live Outcome</b>	<b>3,894</b>	<b>3,257</b>	<b>7,151</b>	<b>4,529</b>	<b>3,500</b>	<b>8,029</b>	12.3%
Died in Custody, Foster, Offsite	71	132	<b>203</b>	41	154	<b>195</b>	-3.9%
Euthanasia	1,184	1,946	<b>3,130</b>	759	669	<b>1,428</b>	-54.4%
Lost/Missing/Unaccounted For	5	14	<b>19</b>	2	6	<b>8</b>	-57.9%
<b>Non-Live Outcome</b>	<b>1,260</b>	<b>2,092</b>	<b>3,352</b>	<b>802</b>	<b>829</b>	<b>1,631</b>	-51.3%
<b>TOTAL OUTCOME</b>	<b>5,154</b>	<b>5,349</b>	<b>10,503</b>	<b>5,331</b>	<b>4,329</b>	<b>9,660</b>	-8.0%
Total Live Out/Total Out	75.55%	60.89%	68.09%	84.96%	80.85%	83.12%	22.1%

	FY08-09	FY09-10	FY10-11	FY11-12	FY12-13	FY13-14	FY14-15
Total Live Intake	26,914	22,807	20,118	20,099	21,493	16,893	9,264
Live Outcome	7,446	6,649	6,624	7,340	10,021	11,707	8,029
Non Live Outcome	19,441	16,155	13,528	12,691	11,960	5,017	1,631
Total Outcome	26,887	22,804	20,152	20,031	21,981	16,724	9,660
	FY08-09	FY09-10	FY10-11	FY11-12	FY12-13	FY13-14	FY YTD
Total Live Out/Total Out	27.69%	29.16%	32.87%	36.64%	45.59%	70.00%	83.12%



"Adoptions" in past years included some currently classified as "Sent to Rescue"

TNVR Program

	Returned to Field	Euthanasia
Oct-14	52	11
Nov-14	38	3
Dec-14	60	14
Jan-15	49	11
Feb-15	49	6
Mar-15	47	9
Apr-15	36	10
May-15	43	2
Jun-15		
Jul-15		
Aug-15		
Sep-15		
FY Totals	374	66

Affordable Sterilization Vouchers

	Redeemed	Issued
Oct-14	632	948
Nov-14	267	785
Dec-14	977	855
Jan-15	1,033	319
Feb-15	666	976
Mar-15	708	1,085
Apr-15	406	943
May-15	519	995
Jun-15		
Jul-15		
Aug-15		
Sep-15		
FY Totals	5,208	6,906

License Tag Sales (Reported by Fiscal & Support Services)

	FY10-11	FY11-12	FY12-13	FY13-14	FY14-15	change
October	\$176,999	\$189,412	\$205,414	\$173,625	\$141,160	-18.70%
November	\$181,637	\$154,035	\$150,956	\$118,822	\$88,994	-25.10%
December	\$196,607	\$181,789	\$173,121	\$170,381	\$149,347	-12.35%
January	\$155,401	\$142,859	\$172,037	\$154,744	\$55,021	-64.44%
February	\$215,972	\$222,882	\$173,243	\$177,535	\$86,716	-51.16%
March	\$253,862	\$207,043	\$224,642	\$187,225	\$164,747	-12.01%
April	\$226,079	\$202,580	\$196,376	\$194,021	\$71,725	-63.03%
May	\$222,142	\$231,426	\$226,391	\$127,320	\$54,995	-56.81%
June	\$217,246	\$182,579	\$189,423	\$182,830		
July	\$231,030	\$224,613	\$86,202	\$123,986		
August	\$215,307	\$184,146	\$279,751	\$161,943		
September	\$216,604	\$185,485	\$171,112	\$174,260		
FY Totals	\$2,508,886	\$2,308,849	\$2,248,668	\$1,946,692	\$812,705	



Monthly Report: June 2015

Period Covered: June 1st thru 30th, 2015

INTAKE	DOG	CAT	TOTAL
Owner Surrender	207	90	297
Returns	23	6	29
Stray Over the Counter	227	454	681
Stray Impounded in Field	248	157	405
Confiscated/Investigations	9	1	10
Abandoned & Transferred In	15	0	15
Born in Shelter	0	4	4
<b>LIVE INTAKE</b>	<b>729</b>	<b>712</b>	<b>1,441</b>
OUTCOME	DOG	CAT	TOTAL
Adoption	424	334	758
Returned to Owner	70	10	80
Transfer HSTB	16	23	39
Sent to Rescue	79	174	253
Community Cat Returns		46	46
<b>Total Live Outcome</b>	<b>589</b>	<b>587</b>	<b>1,176</b>
Died in Custody/Transport	2	7	9
Died in Foster/Rescue	0	19	19
Died Offsite/Unspecified	1	1	2
Euthanasia	137	105	242
Euth: Neonatal/Too Young	0	52	52
Lost/Missing/Unaccounted For	0	0	0
<b>Non-Live Outcome</b>	<b>140</b>	<b>184</b>	<b>324</b>
<b>TOTAL OUTCOME</b>	<b>729</b>	<b>771</b>	<b>1,500</b>

**Noteworthy Events:**

Heartworm treatment medication is on manufacturer backorder. Many treatments are backlogged and we are only able to treat as limited supplies become available.

	DOG	CAT	TOTAL
Total Live Out/Total Out	<b>80.80%</b>	<b>76.13%</b>	<b>78.40%</b>

	DOG	CAT	TOTAL
Shelter Population	264	177	441
Animals in Foster Care	49	316	365
Total Inventory	<b>313</b>	<b>493</b>	<b>806</b>

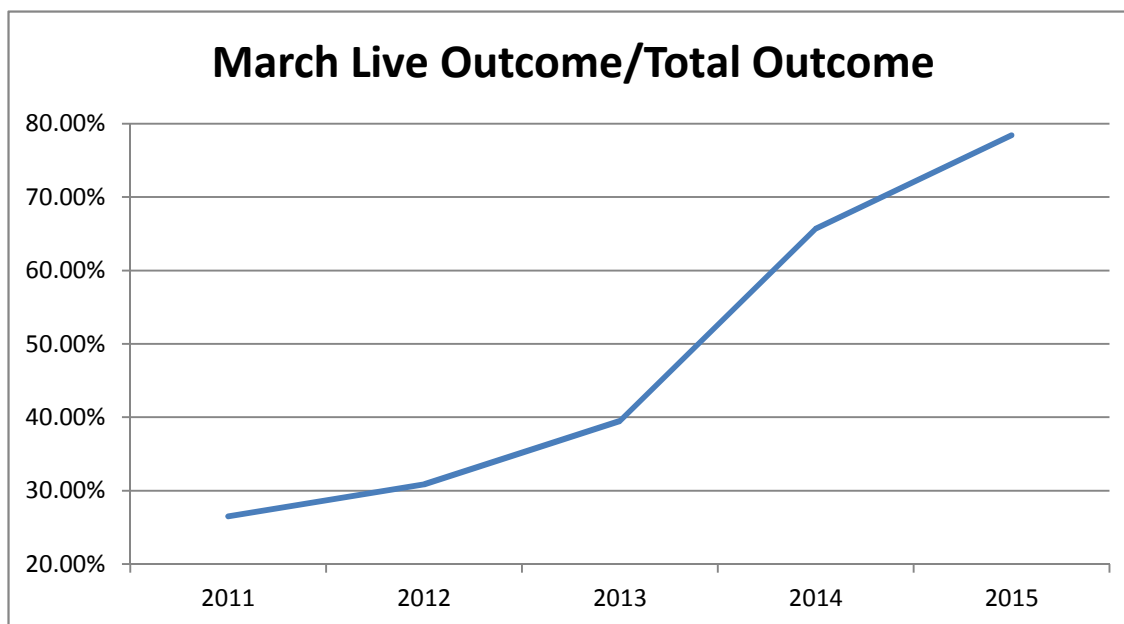
	DOG	CAT	TOTAL
Sterilizations Completed	379	417	796
Surgery other than S/N	8	6	14
Exams	1,536	1,504	3,040
Unique Animals (Exams)	844	844	1,688
Treatments	4,946	3,497	8,443
Unique Animals (Treatments)	838	714	1,552
Care & Cleaning	8,689	5,173	13,862
Average Length of Stay	7.5	7.6	<b>in days</b>

Heartworm Treatments	3
----------------------	---

RTO in Field	5
Bite Case	151
Cruelty/Neglect	270
Dangerous Dog	4
Enforcement	233
Seizure	5
Stray	656
Transport	5
	<b>1,329</b>

Canine Neuter	210
Canine Spay	169
Feline Neuter	190
Feline Spay	227
<b>Sterilizations</b>	<b>796</b>

June 1-30, 2015	Last Year DOG	Jun-14 CAT	TOTAL	Current DOG	Jun-15 CAT	TOTAL	Change
<b>INTAKE</b>							
Owner Surrender	136	94	230	207	90	297	29.1%
Returns	16	5	21	23	6	29	38.1%
Stray Over the Counter	202	604	806	227	454	681	-15.5%
Stray Impounded in Field	283	270	553	248	157	405	-26.8%
Confiscated/Investigations	31	10	41	9	1	10	-75.6%
Abandoned & Transferred In	18	0	18	15	0	15	-16.7%
Born in Shelter	0	12	12	0	4	4	-66.7%
<b>LIVE INTAKE</b>	<b>686</b>	<b>995</b>	<b>1,681</b>	<b>729</b>	<b>712</b>	<b>1,441</b>	<b>-14.3%</b>
<b>OUTCOME</b>							
Adoption	357	325	682	424	334	758	11.1%
Returned to Owner	94	6	100	70	10	80	-20.0%
Transfer to HSTB	0	0	0	16	23	39	100.0%
Sent to Rescue	172	133	305	79	174	253	-17.0%
Community Cat Returns		70	70		46	46	-34.3%
<b>Total Live Outcome</b>	<b>623</b>	<b>534</b>	<b>1,157</b>	<b>589</b>	<b>587</b>	<b>1,176</b>	<b>1.6%</b>
Died in Custody/Transport	4	31	35	3	27	30	-14.3%
Euthanasia	125	439	564	137	157	294	-47.9%
Lost/Missing/Unaccounted For	0	5	5	0	0	0	-100.0%
<b>Non-Live Outcome</b>	<b>129</b>	<b>475</b>	<b>604</b>	<b>140</b>	<b>184</b>	<b>324</b>	<b>-46.4%</b>
<b>TOTAL OUTCOME</b>	<b>752</b>	<b>1,009</b>	<b>1,761</b>	<b>729</b>	<b>771</b>	<b>1,500</b>	<b>-14.8%</b>
Total Live Out/Total Out	82.85%	52.92%	65.70%	80.80%	76.13%	78.40%	
	2011	2012	2013	2014	2015		
Live Outcome/Total Outcome	26.52%	30.86%	39.50%	65.70%	78.40%		

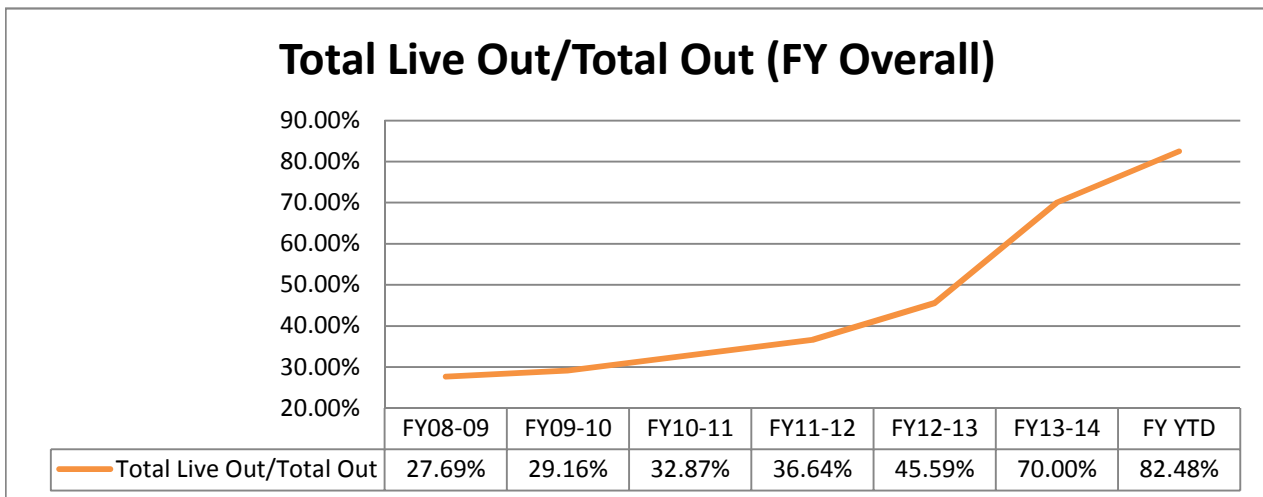


"Adoptions" in past years included some currently classified as "Sent to Rescue"  
 Special Note: 2014 numbers include pets from "transition" program moved to 'adopted'

October 1st thru June 30th

	FY13-14			FY14-15			Change
	DOG	CAT	TOTAL	DOG	CAT	TOTAL	
<b>INTAKE</b>							
Owner Surrender	1,259	665	<b>1,924</b>	1,719	928	<b>2,647</b>	37.6%
Stray Over the Counter	1,571	3,230	<b>4,801</b>	1,463	2,577	<b>4,040</b>	-15.9%
Stray Impounded in Field	2,451	2,527	<b>4,978</b>	2,338	1,157	<b>3,495</b>	-29.8%
Confiscated/Investigations	310	61	<b>371</b>	274	50	<b>324</b>	-12.7%
Abandoned & Transferred In	79	2	<b>81</b>	175	1	<b>176</b>	117.3%
Born in Shelter	49	147	<b>196</b>	20	13	<b>33</b>	-83.2%
<b>LIVE INTAKE</b>	<b>5,719</b>	<b>6,632</b>	<b>12,351</b>	<b>5,989</b>	<b>4,726</b>	<b>10,715</b>	-13.2%
<b>OUTCOME</b>							
Adoption	3,005	2,523	<b>5,528</b>	3,412	1,940	<b>5,352</b>	-3.2%
Returned to Owner	800	100	<b>900</b>	650	52	<b>702</b>	-22.0%
Sent to Rescue	712	575	<b>1,287</b>	1,056	1,587	<b>2,643</b>	105.4%
Community Cat Returns		593	<b>593</b>		508	<b>508</b>	-14.3%
<b>Total Live Outcome</b>	<b>4,517</b>	<b>3,791</b>	<b>8,308</b>	<b>5,118</b>	<b>4,087</b>	<b>9,205</b>	10.8%
Died in Custody, Foster, Offsite	75	163	<b>238</b>	44	181	<b>225</b>	-5.5%
Euthanasia	1,309	2,385	<b>3,694</b>	896	826	<b>1,722</b>	-53.4%
Lost/Missing/Unaccounted For	5	19	<b>24</b>	2	6	<b>8</b>	-66.7%
<b>Non-Live Outcome</b>	<b>1,389</b>	<b>2,567</b>	<b>3,956</b>	<b>942</b>	<b>1,013</b>	<b>1,955</b>	-50.6%
<b>TOTAL OUTCOME</b>	<b>5,906</b>	<b>6,358</b>	<b>12,264</b>	<b>6,060</b>	<b>5,100</b>	<b>11,160</b>	-9.0%
Total Live Out/Total Out	76.48%	59.63%	67.74%	84.46%	80.14%	82.48%	21.8%

	FY08-09	FY09-10	FY10-11	FY11-12	FY12-13	FY13-14	FY14-15
Total Live Intake	26,914	22,807	20,118	20,099	21,493	16,893	10,715
Live Outcome	7,446	6,649	6,624	7,340	10,021	11,707	9,205
Non Live Outcome	19,441	16,155	13,528	12,691	11,960	5,017	1,955
Total Outcome	26,887	22,804	20,152	20,031	21,981	16,724	11,160
	FY08-09	FY09-10	FY10-11	FY11-12	FY12-13	FY13-14	FY YTD
Total Live Out/Total Out	27.69%	29.16%	32.87%	36.64%	45.59%	70.00%	82.48%



"Adoptions" in past years included some currently classified as "Sent to Rescue"

TNVR Program

	Returned to Field	Euthanasia
Oct-14	52	11
Nov-14	38	3
Dec-14	60	14
Jan-15	49	11
Feb-15	49	6
Mar-15	47	9
Apr-15	36	10
May-15	43	2
Jun-15	44	0
Jul-15		
Aug-15		
Sep-15		
FY Totals	418	66

Affordable Sterilization Vouchers

	Redeemed	Issued
Oct-14	632	948
Nov-14	267	785
Dec-14	977	855
Jan-15	1,033	319
Feb-15	666	976
Mar-15	708	1,085
Apr-15	406	943
May-15	519	995
Jun-15	530	1,160
Jul-15		
Aug-15		
Sep-15		
FY Totals	5,738	8,066

License Tag Sales

	FY10-11	FY11-12	FY12-13	FY13-14	FY14-15	Change
October	\$176,999	\$189,412	\$205,414	\$173,625	\$144,685	-16.67%
November	\$181,637	\$154,035	\$150,956	\$118,822	\$108,896	-8.35%
December	\$196,607	\$181,789	\$173,121	\$170,381	\$149,347	-12.35%
January	\$155,401	\$142,859	\$172,037	\$154,744	\$135,602	-12.37%
February	\$215,972	\$222,882	\$173,243	\$177,535	\$149,452	-15.82%
March	\$253,862	\$207,043	\$224,642	\$187,225	\$189,842	1.40%
April	\$226,079	\$202,580	\$196,376	\$194,021	\$149,040	-23.18%
May	\$222,142	\$231,426	\$226,391	\$127,320	\$161,296	26.69%
June	\$217,246	\$182,579	\$189,423	\$182,830	\$175,313	-4.11%
July	\$231,030	\$224,613	\$86,202	\$187,091		
August	\$215,307	\$184,146	\$279,751	\$171,748		
September	\$216,604	\$185,485	\$171,112	\$166,110		
FY Totals	\$2,508,886	\$2,308,849	\$2,248,668	\$2,011,452	\$1,363,473	
Annual Change		-7.97%	-2.61%	-10.55%	-8.28%	

FYTD13-14 \$1,486,503

Monthly Report: July 2015

Period Covered: July 1st thru 31st, 2015

<b>INTAKE</b>	DOG	CAT	TOTAL
Owner Surrender	182	127	<b>309</b>
Returns	21	10	<b>31</b>
Stray Over the Counter	232	335	<b>567</b>
Stray Impounded in Field	292	159	<b>451</b>
Confiscated/Investigations	16	1	<b>17</b>
Abandoned & Transferred In	17	0	<b>17</b>
Born in Shelter	0	2	<b>2</b>
<b>LIVE INTAKE</b>	<b>760</b>	<b>634</b>	<b>1,394</b>
<b>OUTCOME</b>	DOG	CAT	TOTAL
Adoption	437	357	<b>794</b>
Returned to Owner	94	4	<b>98</b>
Transfer HSTB	3	0	<b>3</b>
Sent to Rescue	112	138	<b>250</b>
Community Cat Returns		60	<b>60</b>
<b>Total Live Outcome</b>	<b>646</b>	<b>559</b>	<b>1,205</b>
Died in Custody/Transport	3	6	<b>9</b>
Died in Foster/Rescue	0	5	<b>5</b>
Died Offsite/Unspecified	0	1	<b>1</b>
Euthanasia	70	96	<b>166</b>
Euth: Neonatal/Too Young	0	9	<b>9</b>
Lost/Missing/Unaccounted For	0	0	<b>0</b>
<b>Non-Live Outcome</b>	<b>73</b>	<b>117</b>	<b>190</b>
<b>TOTAL OUTCOME</b>	<b>719</b>	<b>676</b>	<b>1,395</b>

**Noteworthy Events:**

Upcoming "Check the Chip" Day promoting microchip ids part of AVMA national promotion August 15th; 10 am to 2 pm

	DOG	CAT	TOTAL
Total Live Out/Total Out	<b>89.85%</b>	<b>82.69%</b>	<b>86.38%</b>

	DOG	CAT	TOTAL
Shelter Population	315	207	<b>522</b>
Animals in Foster Care	40	246	<b>286</b>
Total Inventory	<b>355</b>	<b>453</b>	<b>808</b>

	DOG	CAT	TOTAL
Sterilizations Completed	333	382	<b>715</b>
Surgery other than S/N	8	6	<b>14</b>
Exams	1,495	1,527	<b>3,022</b>
Unique Animals (Exams)	840	773	<b>1,613</b>
Treatments	4,245	4,089	<b>8,334</b>
Unique Animals (Treatments)	826	670	<b>1,496</b>
Care & Cleaning	8,295	5,611	<b>13,906</b>
Average Length of Stay	12.9	21.4	<b>in days</b>

Heartworm Treatments	3
----------------------	---

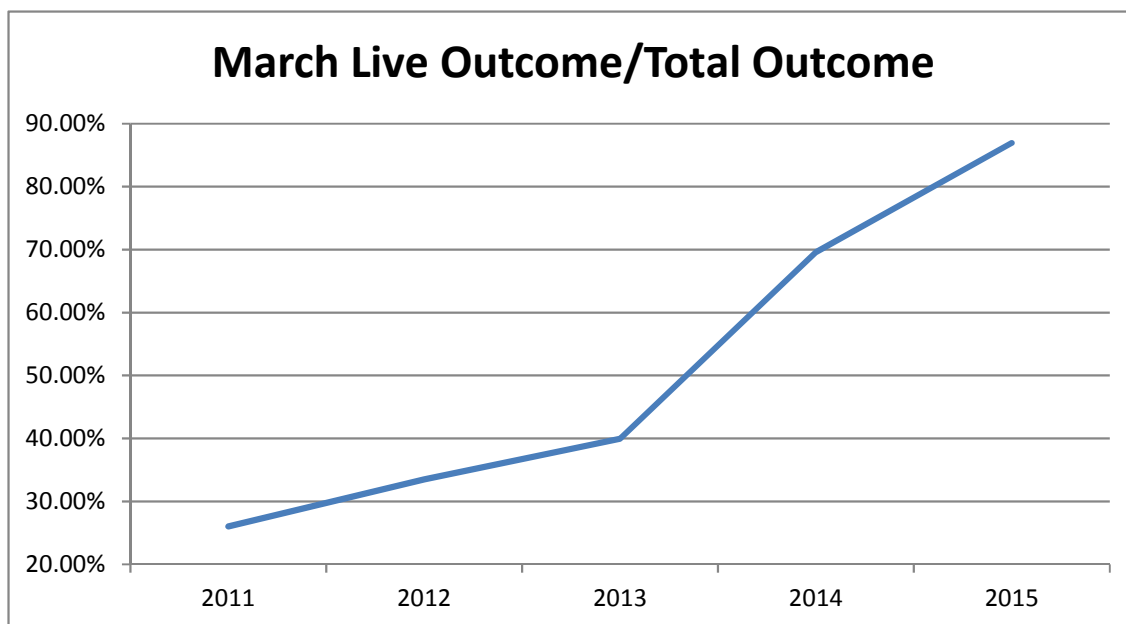
RTO in Field	5
Bite Case	163
Cruelty/Neglect	264
Dangerous Dog	1
Enforcement	168
Seizure	4
Stray	756
Transport	5
	<b>1,366</b>

Canine Neuter	192
Canine Spay	141
Feline Neuter	171
Feline Spay	211
<b>Sterilizations</b>	<b>715</b>

July 1-31, 2015	Last Year DOG	Jul-14 CAT	TOTAL	Current DOG	Jul-15 CAT	TOTAL	Change
<b>INTAKE</b>							
Owner Surrender	124	64	<b>188</b>	182	127	<b>309</b>	64.4%
Returns	15	6	<b>21</b>	21	10	<b>31</b>	47.6%
Stray Over the Counter	226	437	<b>663</b>	232	335	<b>567</b>	-14.5%
Stray Impounded in Field	372	203	<b>575</b>	292	159	<b>451</b>	-21.6%
Confiscated/Investigations	33	8	<b>41</b>	16	1	<b>17</b>	-58.5%
Abandoned & Transferred In	21	1	<b>22</b>	17	0	<b>17</b>	-22.7%
Born in Shelter	0	0	<b>0</b>	0	2	<b>2</b>	100.0%
<b>LIVE INTAKE</b>	<b>791</b>	<b>719</b>	<b>1,510</b>	<b>760</b>	<b>634</b>	<b>1,394</b>	-7.7%
<b>OUTCOME</b>							
Adoption	314	280	<b>594</b>	437	357	<b>794</b>	33.7%
Returned to Owner	76	9	<b>85</b>	94	4	<b>98</b>	15.3%
Transfer to HSTB	0	0	<b>0</b>	3	0	<b>3</b>	100.0%
Sent to Rescue	143	197	<b>340</b>	112	138	<b>250</b>	-26.5%
Community Cat Returns		48	<b>48</b>		60	<b>60</b>	25.0%
<b>Total Live Outcome</b>	<b>533</b>	<b>534</b>	<b>1,067</b>	<b>646</b>	<b>559</b>	<b>1,205</b>	12.9%
Died in Custody/Transport	13	28	<b>41</b>	3	12	<b>15</b>	-63.4%
Euthanasia	178	247	<b>425</b>	70	96	<b>166</b>	-60.9%
Lost/Missing/Unaccounted For	0	0	<b>0</b>	0	0	<b>0</b>	*
<b>Non-Live Outcome</b>	<b>191</b>	<b>275</b>	<b>466</b>	<b>73</b>	<b>108</b>	<b>181</b>	-61.2%
<b>TOTAL OUTCOME</b>	<b>724</b>	<b>809</b>	<b>1,533</b>	<b>719</b>	<b>667</b>	<b>1,386</b>	-9.6%
Total Live Out/Total Out	73.62%	66.01%	69.60%	89.85%	83.81%	86.94%	

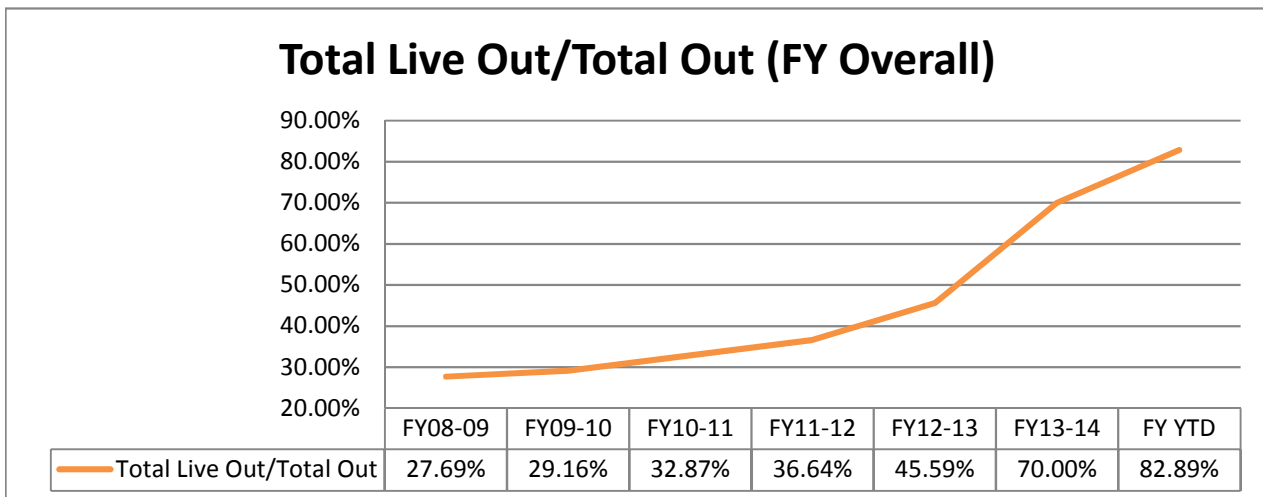
	2011	2012	2013	2014	2015
Live Outcome/Total Outcome	26.01%	33.49%	39.97%	69.60%	86.94%



October 1st thru July 31st

	FY13-14			FY14-15			Change
	DOG	CAT	TOTAL	DOG	CAT	TOTAL	
<b>INTAKE</b>							
Owner Surrender	1,398	735	<b>2,133</b>	1,923	1,065	<b>2,988</b>	40.1%
Stray Over the Counter	1,797	3,667	<b>5,464</b>	1,696	1,329	<b>3,025</b>	-44.6%
Stray Impounded in Field	2,823	2,730	<b>5,553</b>	2,629	2,913	<b>5,542</b>	-0.2%
Confiscated/Investigations	343	69	<b>412</b>	290	51	<b>341</b>	-17.2%
Abandoned & Transferred In	100	3	<b>103</b>	192	1	<b>193</b>	87.4%
Born in Shelter	49	147	<b>196</b>	20	19	<b>39</b>	-80.1%
<b>LIVE INTAKE</b>	<b>6,510</b>	<b>7,351</b>	<b>13,861</b>	<b>6,750</b>	<b>5,378</b>	<b>12,128</b>	-12.5%
<b>OUTCOME</b>							
Adoption	3,319	2,803	<b>6,122</b>	3,847	2,294	<b>6,141</b>	0.3%
Returned to Owner	876	109	<b>985</b>	742	56	<b>798</b>	-19.0%
Sent to Rescue	855	772	<b>1,627</b>	1,179	1,715	<b>2,894</b>	77.9%
Community Cat Returns		641	<b>641</b>		570	<b>570</b>	-11.1%
<b>Total Live Outcome</b>	<b>5,050</b>	<b>4,325</b>	<b>9,375</b>	<b>5,768</b>	<b>4,635</b>	<b>10,403</b>	11.0%
Died in Custody, Foster, Offsite	88	191	<b>279</b>	48	192	<b>240</b>	-14.0%
Euthanasia	1,487	2,632	<b>4,119</b>	968	932	<b>1,900</b>	-53.9%
Lost/Missing/Unaccounted For	5	19	<b>24</b>	2	6	<b>8</b>	-66.7%
<b>Non-Live Outcome</b>	<b>1,580</b>	<b>2,842</b>	<b>4,422</b>	<b>1,018</b>	<b>1,130</b>	<b>2,148</b>	-51.4%
<b>TOTAL OUTCOME</b>	<b>6,630</b>	<b>7,167</b>	<b>13,797</b>	<b>6,786</b>	<b>5,765</b>	<b>12,551</b>	-9.0%
Total Live Out/Total Out	76.17%	60.35%	67.95%	85.00%	80.40%	82.89%	22.0%

	FY08-09	FY09-10	FY10-11	FY11-12	FY12-13	FY13-14	FY14-15
Total Live Intake	26,914	22,807	20,118	20,099	21,493	16,893	12,128
Live Outcome	7,446	6,649	6,624	7,340	10,021	11,707	10,403
Non Live Outcome	19,441	16,155	13,528	12,691	11,960	5,017	2,148
Total Outcome	26,887	22,804	20,152	20,031	21,981	16,724	12,551
	FY08-09	FY09-10	FY10-11	FY11-12	FY12-13	FY13-14	FY YTD
Total Live Out/Total Out	27.69%	29.16%	32.87%	36.64%	45.59%	70.00%	82.89%



"Adoptions" in past years included some currently classified as "Sent to Rescue"

TNVR Program

	Returned to Field	Euthanasia
Oct-14	52	11
Nov-14	46	3
Dec-14	65	14
Jan-15	51	11
Feb-15	53	6
Mar-15	47	9
Apr-15	41	10
May-15	43	2
Jun-15	46	0
Jul-15	60	0
Aug-15		
Sep-15		
FY Totals	504	66

Affordable Sterilization Vouchers

	Redeemed	Issued
Oct-14	632	948
Nov-14	267	785
Dec-14	977	855
Jan-15	1,033	319
Feb-15	666	976
Mar-15	708	1,085
Apr-15	406	943
May-15	519	995
Jun-15	530	1,160
Jul-15	632	1,083
Aug-15		
Sep-15		
FY Totals	6,370	9,149

License Tag Sales

	FY10-11	FY11-12	FY12-13	FY13-14	FY14-15	Change
October	\$176,999	\$189,412	\$205,414	\$173,625	\$144,685	-16.67%
November	\$181,637	\$154,035	\$150,956	\$118,822	\$108,896	-8.35%
December	\$196,607	\$181,789	\$173,121	\$170,381	\$149,347	-12.35%
January	\$155,401	\$142,859	\$172,037	\$154,744	\$135,602	-12.37%
February	\$215,972	\$222,882	\$173,243	\$177,535	\$149,452	-15.82%
March	\$253,862	\$207,043	\$224,642	\$187,225	\$189,842	1.40%
April	\$226,079	\$202,580	\$196,376	\$194,021	\$149,040	-23.18%
May	\$222,142	\$231,426	\$226,391	\$127,320	\$161,296	26.69%
June	\$217,246	\$182,579	\$189,423	\$182,830	\$175,953	-3.76%
July	\$231,030	\$224,613	\$86,202	\$187,091	\$119,607	-36.07%
August	\$215,307	\$184,146	\$279,751	\$171,748		
September	\$216,604	\$185,485	\$171,112	\$166,110		
FY Totals	\$2,508,886	\$2,308,849	\$2,248,668	\$2,011,452	\$1,483,720	



Monthly Report: August 2015

Period Covered: August 1st thru 31st, 2015

<b>INTAKE</b>	DOG	CAT	TOTAL
Owner Surrender	167	115	<b>282</b>
Returns	25	10	<b>35</b>
Stray Over the Counter	254	320	<b>574</b>
Stray Impounded in Field	311	143	<b>454</b>
Confiscated/Investigations	17	6	<b>23</b>
Abandoned & Transferred In	12	0	<b>12</b>
Born in Shelter	0	8	<b>8</b>
<b>LIVE INTAKE</b>	<b>786</b>	<b>602</b>	<b>1,388</b>
<b>OUTCOME</b>	DOG	CAT	TOTAL
Adoption	481	373	<b>854</b>
Returned to Owner	82	8	<b>90</b>
Transfer HSTB	26	4	<b>30</b>
Sent to Rescue	137	149	<b>286</b>
Community Cat Returns		68	<b>68</b>
<b>Total Live Outcome</b>	<b>726</b>	<b>602</b>	<b>1,328</b>
Died in Custody/Transport	2	6	<b>8</b>
Died in Foster/Rescue	4	6	<b>10</b>
Died Offsite/Unspecified	2	1	<b>3</b>
Euthanasia	115	68	<b>183</b>
Euth: Neonatal/Too Young	0	23	<b>23</b>
Lost/Missing/Unaccounted For	0	0	<b>0</b>
<b>Non-Live Outcome</b>	<b>123</b>	<b>104</b>	<b>227</b>
<b>TOTAL OUTCOME</b>	<b>849</b>	<b>706</b>	<b>1,555</b>

**Noteworthy Events:**

Lobby Project Began - 8/24/2015

	DOG	CAT	TOTAL
Total Live Out/Total Out	<b>85.51%</b>	<b>85.27%</b>	<b>85.40%</b>

	DOG	CAT	TOTAL
Shelter Population	254	153	<b>407</b>
Animals in Foster Care	38	188	<b>226</b>
Total Inventory	<b>292</b>	<b>341</b>	<b>633</b>

	DOG	CAT	TOTAL
Sterilizations Completed	396	310	<b>706</b>
Surgery other than S/N	7	4	<b>11</b>
Exams	1,664	1,232	<b>2,896</b>
Unique Animals (Exams)	905	684	<b>1,589</b>
Treatments	6,472	2,888	<b>9,360</b>
Unique Animals (Treatments)	866	595	<b>1,461</b>
Care & Cleaning	9,386	4,617	<b>14,003</b>
Average Length of Stay	5.9	5.3	<b>in days</b>

Heartworm Treatments	2
----------------------	---

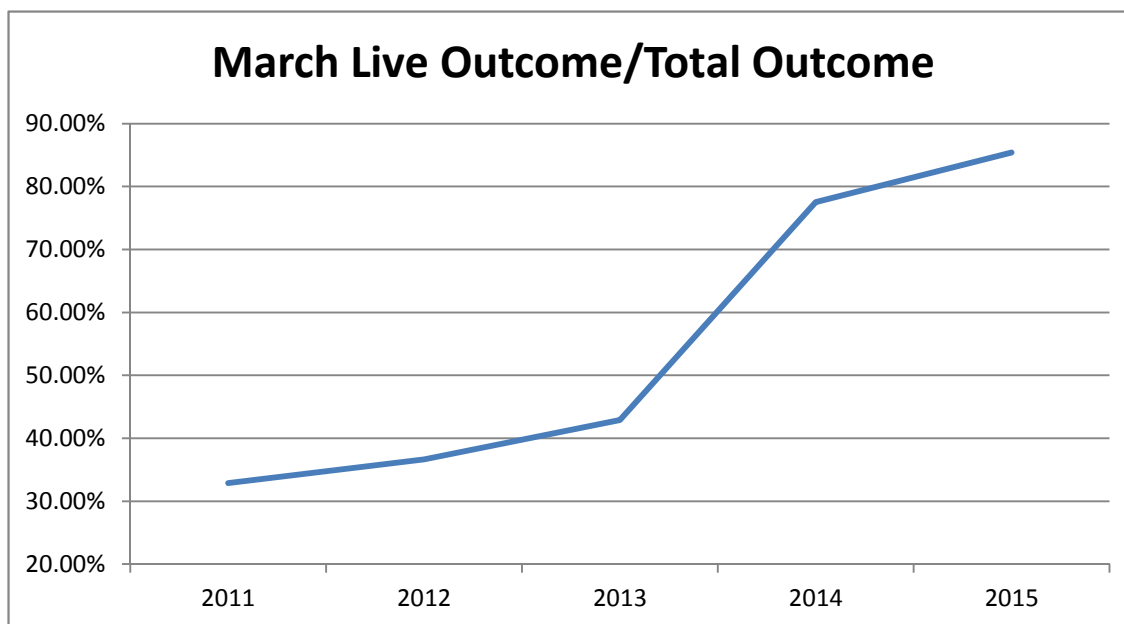
RTO in Field	4
Bite Case	158
Cruelty/Neglect	280
Dangerous Dog	1
Enforcement	231
Seizure	13
Stray	662
Transport	14
	<b>1,363</b>

Canine Neuter	208
Canine Spay	188
Feline Neuter	140
Feline Spay	170
<b>Sterilizations</b>	<b>706</b>

August 1-31, 2015	Last Year DOG	Aug-14 CAT	TOTAL	Current DOG	Aug-15 CAT	TOTAL	Change
<b>INTAKE</b>							
Owner Surrender	140	84	<b>224</b>	167	115	<b>282</b>	25.9%
Returns	17	1	<b>18</b>	25	10	<b>35</b>	94.4%
Stray Over the Counter	216	493	<b>709</b>	254	320	<b>574</b>	-19.0%
Stray Impounded in Field	295	271	<b>566</b>	311	143	<b>454</b>	-19.8%
Confiscated/Investigations	14	0	<b>14</b>	17	6	<b>23</b>	64.3%
Abandoned & Transferred In	15	0	<b>15</b>	12	0	<b>12</b>	-20.0%
Born in Shelter	0	0	<b>0</b>	0	8	<b>8</b>	100.0%
<b>LIVE INTAKE</b>	<b>697</b>	<b>849</b>	<b>1,546</b>	<b>786</b>	<b>602</b>	<b>1,388</b>	-10.2%
<b>OUTCOME</b>							
Adoption	340	312	<b>652</b>	481	373	<b>854</b>	31.0%
Returned to Owner	102	6	<b>108</b>	82	8	<b>90</b>	-16.7%
Transfer to HSTB	27	0	<b>27</b>	26	4	<b>30</b>	11.1%
Sent to Rescue	119	143	<b>262</b>	137	149	<b>286</b>	9.2%
Community Cat Returns		83	<b>83</b>		68	<b>68</b>	-18.1%
<b>Total Live Outcome</b>	<b>588</b>	<b>544</b>	<b>1,132</b>	<b>726</b>	<b>602</b>	<b>1,328</b>	17.3%
Died in Custody/Transport	8	22	<b>30</b>	8	13	<b>21</b>	-30.0%
Euthanasia	133	161	<b>294</b>	115	91	<b>206</b>	-29.9%
Lost/Missing/Unaccounted For	3	1	<b>4</b>	0	0	<b>0</b>	*
<b>Non-Live Outcome</b>	<b>144</b>	<b>184</b>	<b>328</b>	<b>123</b>	<b>104</b>	<b>227</b>	-30.8%
<b>TOTAL OUTCOME</b>	<b>732</b>	<b>728</b>	<b>1,460</b>	<b>849</b>	<b>706</b>	<b>1,555</b>	6.5%
Total Live Out/Total Out	80.33%	74.73%	77.53%	85.51%	85.27%	85.40%	

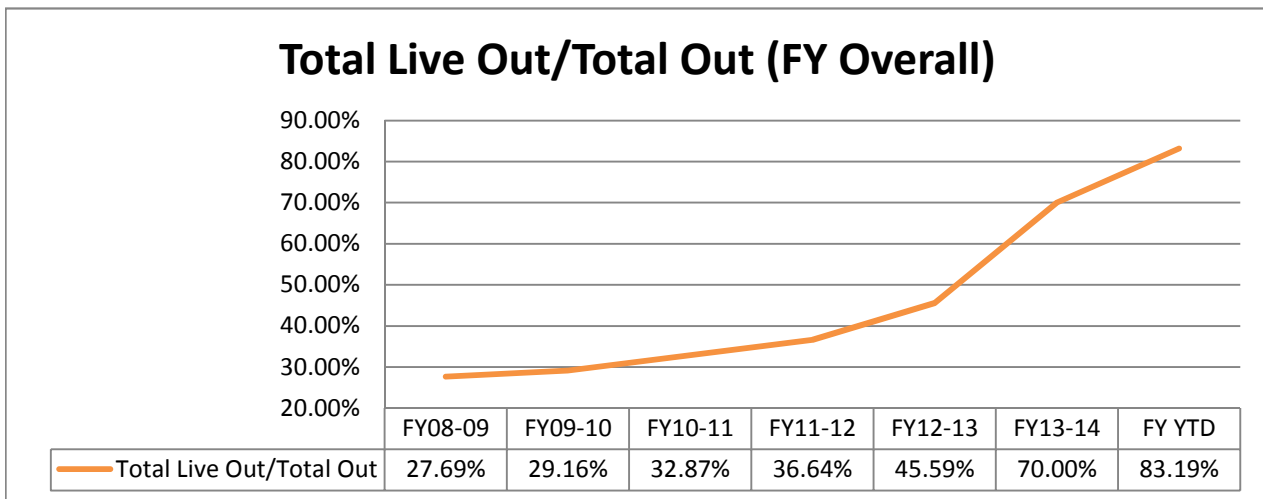
	2011	2012	2013	2014	2015
Live Outcome/Total Outcome	32.87%	36.64%	42.88%	77.53%	85.40%



October 1st thru August 31st

	FY13-14			FY14-15			Change
	DOG	CAT	TOTAL	DOG	CAT	TOTAL	
<b>INTAKE</b>							
Owner Surrender	1,555	820	<b>2,375</b>	2,104	1,190	<b>3,294</b>	38.7%
Stray Over the Counter	2,013	4,160	<b>6,173</b>	1,949	3,232	<b>5,181</b>	-16.1%
Stray Impounded in Field	3,118	3,001	<b>6,119</b>	2,941	1,459	<b>4,400</b>	-28.1%
Confiscated/Investigations	357	69	<b>426</b>	307	57	<b>364</b>	-14.6%
Abandoned & Transferred In	115	3	<b>118</b>	204	1	<b>205</b>	73.7%
Born in Shelter	49	147	<b>196</b>	20	23	<b>43</b>	-78.1%
<b>LIVE INTAKE</b>	<b>7,207</b>	<b>8,200</b>	<b>15,407</b>	<b>7,525</b>	<b>5,962</b>	<b>13,487</b>	-12.5%
<b>OUTCOME</b>							
Adoption	3,659	3,115	<b>6,774</b>	4,330	2,670	<b>7,000</b>	3.3%
Returned to Owner	978	115	<b>1,093</b>	826	64	<b>890</b>	-18.6%
Sent to Rescue	1,001	915	<b>1,916</b>	1,334	1,878	<b>3,212</b>	67.6%
Community Cat Returns		724	<b>724</b>		636	<b>636</b>	-12.2%
<b>Total Live Outcome</b>	<b>5,638</b>	<b>4,869</b>	<b>10,507</b>	<b>6,490</b>	<b>5,248</b>	<b>11,738</b>	11.7%
Died in Custody, Foster, Offsite	96	213	<b>309</b>	55	206	<b>261</b>	-15.5%
Euthanasia	1,620	2,793	<b>4,413</b>	1,081	1,022	<b>2,103</b>	-52.3%
Lost/Missing/Unaccounted For	8	20	<b>28</b>	2	6	<b>8</b>	-71.4%
<b>Non-Live Outcome</b>	<b>1,724</b>	<b>3,026</b>	<b>4,750</b>	<b>1,138</b>	<b>1,234</b>	<b>2,372</b>	-50.1%
<b>TOTAL OUTCOME</b>	<b>7,362</b>	<b>7,895</b>	<b>15,257</b>	<b>7,628</b>	<b>6,482</b>	<b>14,110</b>	-7.5%
Total Live Out/Total Out	76.58%	61.67%	68.87%	85.08%	80.96%	83.19%	20.8%

	FY08-09	FY09-10	FY10-11	FY11-12	FY12-13	FY13-14	FY14-15
Total Live Intake	26,914	22,807	20,118	20,099	21,493	16,893	13,487
Live Outcome	7,446	6,649	6,624	7,340	10,021	11,707	11,738
Non Live Outcome	19,441	16,155	13,528	12,691	11,960	5,017	2,372
Total Outcome	26,887	22,804	20,152	20,031	21,981	16,724	14,110
	FY08-09	FY09-10	FY10-11	FY11-12	FY12-13	FY13-14	FY YTD
Total Live Out/Total Out	27.69%	29.16%	32.87%	36.64%	45.59%	70.00%	83.19%



"Adoptions" in past years included some currently classified as "Sent to Rescue"

TNVR Program

	Returned to Field	Euthanasia
Oct-14	52	11
Nov-14	46	3
Dec-14	65	14
Jan-15	51	11
Feb-15	53	6
Mar-15	47	9
Apr-15	41	10
May-15	43	2
Jun-15	46	0
Jul-15	60	0
Aug-15	66	0
Sep-15		
FY Totals	570	66

Affordable Sterilization Vouchers

	Redeemed	Issued
Oct-14	632	948
Nov-14	267	785
Dec-14	977	855
Jan-15	1,033	319
Feb-15	666	976
Mar-15	708	1,085
Apr-15	406	943
May-15	519	995
Jun-15	530	1,160
Jul-15	632	1,083
Aug-15	595	923
Sep-15		
FY Totals	6,965	10,072

License Tag Sales

	FY10-11	FY11-12	FY12-13	FY13-14	FY14-15	Change
October	\$176,999	\$189,412	\$205,414	\$173,625	\$144,685	-16.67%
November	\$181,637	\$154,035	\$150,956	\$118,822	\$108,896	-8.35%
December	\$196,607	\$181,789	\$173,121	\$170,381	\$149,347	-12.35%
January	\$155,401	\$142,859	\$172,037	\$154,744	\$135,602	-12.37%
February	\$215,972	\$222,882	\$173,243	\$177,535	\$149,452	-15.82%
March	\$253,862	\$207,043	\$224,642	\$187,225	\$189,842	1.40%
April	\$226,079	\$202,580	\$196,376	\$194,021	\$149,040	-23.18%
May	\$222,142	\$231,426	\$226,391	\$127,320	\$161,296	26.69%
June	\$217,246	\$182,579	\$189,423	\$182,830	\$175,953	-3.76%
July	\$231,030	\$224,613	\$86,202	\$187,091	\$119,607	-36.07%
August	\$215,307	\$184,146	\$279,751	\$171,748	\$132,444	-22.88%
September	\$216,604	\$185,485	\$171,112	\$166,110		
FY Totals	\$2,508,886	\$2,308,849	\$2,248,668	\$2,011,452	\$1,616,164	

Monthly Report: September 2015

Period Covered: September 1st thru 30th, 2015

<b>INTAKE</b>	DOG	CAT	TOTAL
Owner Surrender	143	120	<b>263</b>
Returns	25	5	<b>30</b>
Stray Over the Counter	196	323	<b>519</b>
Stray Impounded in Field	302	129	<b>431</b>
Confiscated/Investigations	25	0	<b>25</b>
Abandoned & Transferred In	13	0	<b>13</b>
Born in Shelter	1	7	<b>8</b>
<b>LIVE INTAKE</b>	<b>705</b>	<b>584</b>	<b>1,289</b>
<b>OUTCOME</b>	DOG	CAT	TOTAL
Adoption	420	272	<b>692</b>
Returned to Owner	91	1	<b>92</b>
Transfer HSTB	2	42	<b>44</b>
Sent to Rescue	96	113	<b>209</b>
Community Cat Returns		58	<b>58</b>
<b>Total Live Outcome</b>	<b>609</b>	<b>486</b>	<b>1,095</b>
Died in Custody/Transport	3	7	<b>10</b>
Died in Foster/Rescue	1	14	<b>15</b>
Died Offsite/Unspecified	0	4	<b>4</b>
Euthanasia	82	64	<b>146</b>
Euth: Neonatal/Too Young	0	54	<b>54</b>
Lost/Missing/Unaccounted For	0	0	<b>0</b>
<b>Non-Live Outcome</b>	<b>86</b>	<b>143</b>	<b>229</b>
<b>TOTAL OUTCOME</b>	<b>695</b>	<b>629</b>	<b>1,324</b>

***Noteworthy Events:***

Lobby Project Well Underway  
Re-Roofing to begin in October

	DOG	CAT	TOTAL
Total Live Out/Total Out	<b>87.63%</b>	<b>77.27%</b>	<b>82.70%</b>

	DOG	CAT	TOTAL
Shelter Population	253	107	<b>360</b>
Animals in Foster Care	48	189	<b>237</b>
Total Inventory	<b>301</b>	<b>296</b>	<b>597</b>

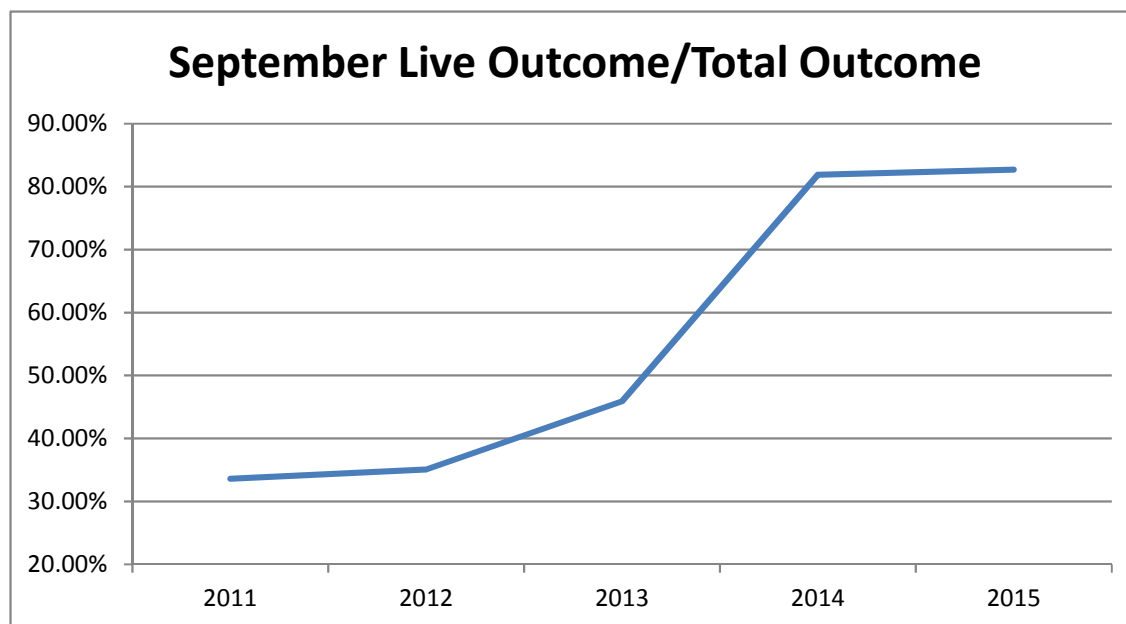
	DOG	CAT	TOTAL
Sterilizations Completed	342	257	<b>599</b>
Surgery other than S/N	6	4	<b>10</b>
Exams	1,569	1,162	<b>2,731</b>
Unique Animals (Exams)	769	660	<b>1,429</b>
Treatments	5,334	2,575	<b>7,909</b>
Unique Animals (Treatments)	777	544	<b>1,321</b>
Care & Cleaning	7,434	4,015	<b>11,449</b>
Average Length of Stay	7.5	6.9	<b>in days</b>

Heartworm Treatments	6
----------------------	---

RTO in Field	4
Bite Case	142
Cruelty/Neglect	255
Dangerous Dog	3
Enforcement	268
Seizure	8
Stray	608
Transport	13
	<b>1,301</b>

Canine Neuter	196
Canine Spay	146
Feline Neuter	118
Feline Spay	139
<b>Sterilizations</b>	<b>599</b>

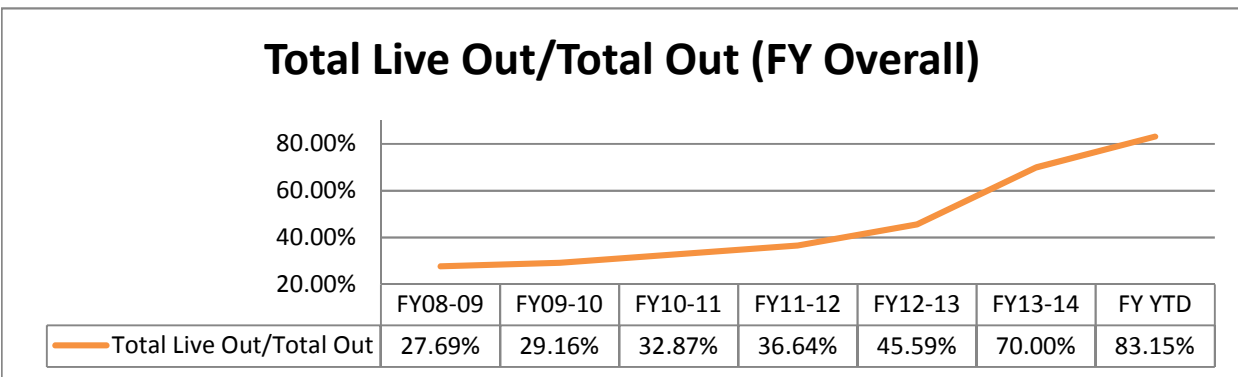
September 1-30, 2015	Last Year			Current			Change
	DOG	CAT	TOTAL	DOG	CAT	TOTAL	
<b>INTAKE</b>							
Owner Surrender	117	65	<b>182</b>	143	120	<b>263</b>	44.5%
Returns	21	8	<b>29</b>	25	5	<b>30</b>	3.4%
Stray Over the Counter	249	508	<b>757</b>	196	323	<b>519</b>	-31.4%
Stray Impounded in Field	288	149	<b>437</b>	302	129	<b>431</b>	-1.4%
Confiscated/Investigations	33	6	<b>39</b>	25	0	<b>25</b>	-35.9%
Abandoned & Transferred In	19	0	<b>19</b>	13	0	<b>13</b>	-31.6%
Born in Shelter	0	20	<b>20</b>	1	7	<b>8</b>	-60.0%
<b>LIVE INTAKE</b>	<b>727</b>	<b>756</b>	<b>1,483</b>	<b>705</b>	<b>584</b>	<b>1,289</b>	-13.1%
<b>OUTCOME</b>							
Adoption	373	293	<b>666</b>	420	272	<b>692</b>	3.9%
Returned to Owner	80	4	<b>84</b>	91	1	<b>92</b>	9.5%
Transfer to HSTB	29	23	<b>52</b>	2	42	<b>44</b>	-15.4%
Sent to Rescue	93	207	<b>300</b>	96	113	<b>209</b>	-30.3%
Community Cat Returns		98	<b>98</b>		58	<b>58</b>	-40.8%
<b>Total Live Outcome</b>	<b>575</b>	<b>625</b>	<b>1,200</b>	<b>609</b>	<b>486</b>	<b>1,095</b>	-8.8%
Died in Custody/Transport	3	20	<b>23</b>	4	25	<b>29</b>	26.1%
Euthanasia	91	152	<b>243</b>	82	118	<b>200</b>	-17.7%
Lost/Missing/Unaccounted For	0	1	<b>1</b>	0	0	<b>0</b>	*
<b>Non-Live Outcome</b>	<b>94</b>	<b>173</b>	<b>267</b>	<b>86</b>	<b>143</b>	<b>229</b>	-14.2%
<b>TOTAL OUTCOME</b>	<b>669</b>	<b>798</b>	<b>1,467</b>	<b>695</b>	<b>629</b>	<b>1,324</b>	-9.7%
Total Live Out/Total Out	85.95%	78.32%	81.80%	87.63%	77.27%	82.70%	
<b>Monthly Comparisons</b>	2011	2012	2013	2014	2015		
Live Outcome/Total Outcome	33.59%	35.07%	45.90%	81.90%	82.70%		



October 1st thru September 30th

	FY13-14			FY14-15			Change
	DOG	CAT	TOTAL	DOG	CAT	TOTAL	
<b>INTAKE</b>							
Owner Surrender	1,563	860	<b>2,423</b>	1,995	1,248	<b>3,243</b>	33.8%
Returns	130	33	<b>163</b>	287	67	<b>354</b>	117.2%
Stray Over the Counter	2,262	4,668	<b>6,930</b>	2,145	3,547	<b>5,692</b>	-17.9%
Stray Impounded in Field	3,407	3,151	<b>6,558</b>	3,243	1,588	<b>4,831</b>	-26.3%
Confiscated/Investigations	391	75	<b>466</b>	332	57	<b>389</b>	-16.5%
Abandoned & Transferred In	134	3	<b>137</b>	217	1	<b>218</b>	59.1%
Born in Shelter	49	167	<b>216</b>	21	30	<b>51</b>	-76.4%
<b>LIVE INTAKE</b>	<b>7,936</b>	<b>8,957</b>	<b>16,893</b>	<b>8,240</b>	<b>6,538</b>	<b>14,778</b>	-12.5%
<b>OUTCOME</b>							
Adoption	4,032	3,408	<b>7,440</b>	4,750	2,942	<b>7,692</b>	3.4%
Returned to Owner	1,058	119	<b>1,177</b>	917	65	<b>982</b>	-16.6%
Sent to Rescue	1,123	1,145	<b>2,268</b>	1,432	2,033	<b>3,465</b>	52.8%
Community Cat Returns		822	<b>822</b>		694	<b>694</b>	-15.6%
<b>Total Live Outcome</b>	<b>6,213</b>	<b>5,494</b>	<b>11,707</b>	<b>7,099</b>	<b>5,734</b>	<b>12,833</b>	9.6%
Died in Custody, Foster, Offsite	99	233	<b>332</b>	59	231	<b>290</b>	-12.7%
Euthanasia	1,711	2,945	<b>4,656</b>	1,162	1,140	<b>2,302</b>	-50.6%
Lost/Missing/Unaccounted For	8	21	<b>29</b>	2	6	<b>8</b>	-72.4%
<b>Non-Live Outcome</b>	<b>1,818</b>	<b>3,199</b>	<b>5,017</b>	<b>1,223</b>	<b>1,377</b>	<b>2,600</b>	-48.2%
<b>TOTAL OUTCOME</b>	<b>8,031</b>	<b>8,693</b>	<b>16,724</b>	<b>8,322</b>	<b>7,111</b>	<b>15,433</b>	-7.7%
Total Live Out/Total Out	77.36%	63.20%	70.00%	85.30%	80.64%	83.15%	
Live Out/Live In (ASPCA)	78.29%	61.34%	69.30%	86.15%	87.70%	86.84%	
Euthanasia per 1000 residents			3.58			1.77	
Asilomar Accords			71.65%			84.79%	
"Save Rate"			71.43%			87.35%	

<i>FY Totals (Current FY is YTD)</i>	FY08-09	FY09-10	FY10-11	FY11-12	FY12-13	FY13-14	FY14-15
Total Live Intake	26,914	22,807	20,118	20,099	21,493	16,893	14,778
Live Outcome	7,446	6,649	6,624	7,340	10,021	11,707	12,833
Non Live Outcome	19,441	16,155	13,528	12,691	11,960	5,017	2,600
Total Outcome	26,887	22,804	20,152	20,031	21,981	16,724	15,433
	FY08-09	FY09-10	FY10-11	FY11-12	FY12-13	FY13-14	FY YTD
Total Live Out/Total Out	27.69%	29.16%	32.87%	36.64%	45.59%	70.00%	83.15%



"Adoptions" in past years included some currently classified as "Sent to Rescue"

TNVR Program

	Released	Euthanasia
Oct-14	52	11
Nov-14	46	3
Dec-14	65	14
Jan-15	51	11
Feb-15	53	6
Mar-15	47	9
Apr-15	41	10
May-15	43	2
Jun-15	46	0
Jul-15	60	0
Aug-15	66	0
Sep-15	61	1
<b>FY Totals</b>	<b>631</b>	<b>67</b>

Affordable Sterilization Vouchers

	Redeemed	Issued
Oct-14	632	948
Nov-14	267	785
Dec-14	977	855
Jan-15	1,033	319
Feb-15	666	976
Mar-15	708	1,085
Apr-15	406	943
May-15	519	995
Jun-15	530	1,160
Jul-15	632	1,083
Aug-15	595	923
Sep-15	449	887
<b>FY Totals</b>	<b>7,414</b>	<b>10,959</b>

License Tag Sales

	FY10-11	FY11-12	FY12-13	FY13-14	FY14-15	Change
October	\$176,999	\$189,412	\$205,414	\$173,625	\$144,685	-16.67%
November	\$181,637	\$154,035	\$150,956	\$118,822	\$108,896	-8.35%
December	\$196,607	\$181,789	\$173,121	\$170,381	\$149,347	-12.35%
January	\$155,401	\$142,859	\$172,037	\$154,744	\$135,602	-12.37%
February	\$215,972	\$222,882	\$173,243	\$177,535	\$149,452	-15.82%
March	\$253,862	\$207,043	\$224,642	\$187,225	\$189,842	1.40%
April	\$226,079	\$202,580	\$196,376	\$194,021	\$149,040	-23.18%
May	\$222,142	\$231,426	\$226,391	\$127,320	\$161,296	26.69%
June	\$217,246	\$182,579	\$189,423	\$182,830	\$175,953	-3.76%
July	\$231,030	\$224,613	\$86,202	\$187,091	\$122,197	-34.69%
August	\$215,307	\$184,146	\$279,751	\$171,748	\$69,040	-59.80%
September	\$216,604	\$185,485	\$171,112	\$166,110	\$222,404	33.89%
<b>FY Totals</b>	<b>\$2,508,886</b>	<b>\$2,308,849</b>	<b>\$2,248,668</b>	<b>\$2,011,452</b>	<b>\$1,777,754</b>	

\*\*August & September tag figures may be adjusted at final accounting for FY