

Monthly Report: October 2015

Period Covered: October 1st thru 31st, 2015

INTAKE	DOG	CAT	TOTAL
Owner Surrender	142	72	214
Returns	31	3	34
Stray Over the Counter	174	373	547
Stray Impounded in Field	278	169	447
Confiscated/Investigations	35	1	36
Abandoned & Transferred In	13	0	13
Born in Shelter	0	0	0
LIVE INTAKE	673	618	1,291
OUTCOME	DOG	CAT	TOTAL
Adoption	462	285	747
Returned to Owner	82	6	88
Transfer HSTB	16	0	16
Sent to Rescue	92	112	204
Community Cat Returns		110	110
Total Live Outcome	652	513	1,165
Died in Custody/Transport	3	2	5
Died in Foster/Rescue	0	8	8
Died Offsite/Unspecified	0	2	2
Euthanasia	70	58	128
Euth: Neonatal/Too Young	0	31	31
Lost/Missing/Unaccounted For	0	1	1
Non-Live Outcome	73	102	175
TOTAL OUTCOME	725	615	1,340

Noteworthy Events:

	DOG	CAT	TOTAL
Total Live Out/Total Out	89.93%	83.41%	86.94%

	DOG	CAT	TOTAL
Shelter Population	209	146	355
Animals in Foster Care	40	153	193
Total Inventory	249	299	548

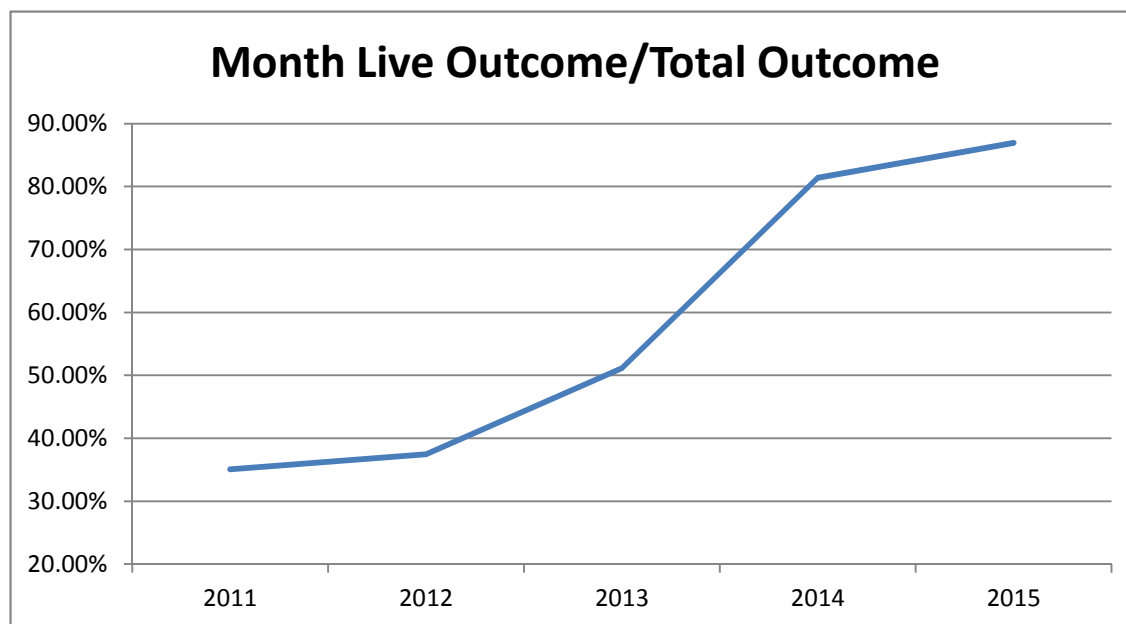
	DOG	CAT	TOTAL
Sterilizations Completed	334	345	679
Surgery other than S/N	19	14	33
Exams	1,540	1,335	2,875
Unique Animals (Exams)	732	726	1,458
Treatments	5,015	3,453	8,468
Unique Animals (Treatments)	736	640	1,376
Care & Cleaning	6,804	3,730	10,534
Average Length of Stay	12.6	18.2	in days

Heartworm Treatments	5
----------------------	---

RTO in Field	10
Bite Case	183
Cruelty/Neglect	243
Dangerous Dog	0
Enforcement	332
Seizure	6
Stray	614
Transport	7
	1,395

Canine Neuter	176
Canine Spay	158
Feline Neuter	169
Feline Spay	176
Sterilizations	679

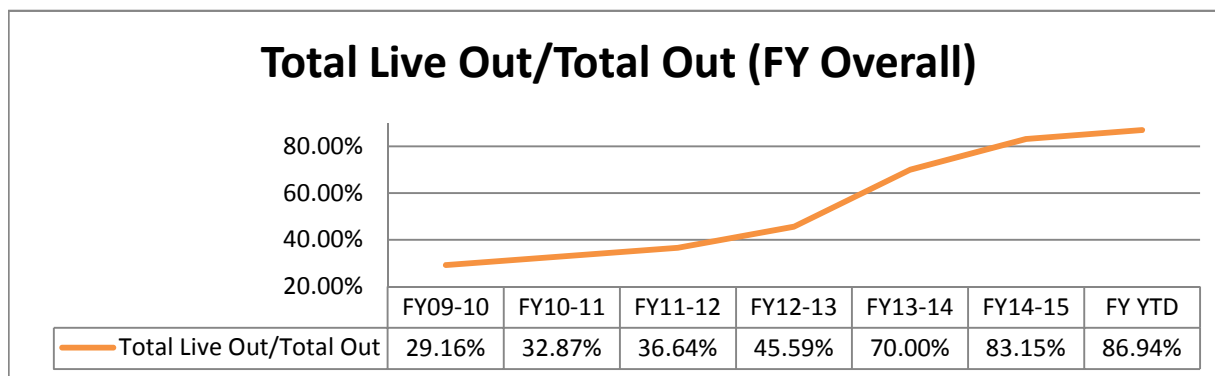
October 1-31, 2015	Last Year DOG	Oct-14 CAT	TOTAL	Current DOG	Oct-15 CAT	TOTAL	Change
INTAKE							
Owner Surrender	139	125	264	142	72	214	-18.9%
Returns	27	2	29	31	3	34	17.2%
Stray Over the Counter	166	384	550	174	373	547	-0.5%
Stray Impounded in Field	312	140	452	278	169	447	-1.1%
Confiscated/Investigations	78	7	85	35	1	36	-57.6%
Abandoned & Transferred In	33	0	33	13	0	13	-60.6%
Born in Shelter	7	0	7	0	0	0	-100.0%
LIVE INTAKE	762	658	1,420	673	618	1,291	-9.1%
OUTCOME							
Adoption	389	255	644	462	285	747	16.0%
Returned to Owner	96	8	104	82	6	88	-15.4%
Transfer to HSTB	18	24	42	16	0	16	-61.9%
Sent to Rescue	149	370	519	92	112	204	-60.7%
Community Cat Returns		64	64		110	110	71.9%
Total Live Outcome	652	721	1,373	652	513	1,165	-15.1%
Died in Custody/Transport	7	18	25	3	12	15	-40.0%
Euthanasia	174	114	288	70	89	159	-44.8%
Lost/Missing/Unaccounted For	0	1	1	0	1	1	*
Non-Live Outcome	181	133	314	73	102	175	-44.3%
TOTAL OUTCOME	833	854	1,687	725	615	1,340	-20.6%
Total Live Out/Total Out	78.27%	84.43%	81.39%	89.93%	83.41%	86.94%	
Monthly Comparisons	2011	2012	2013	2014	2015		
Live Outcome/Total Outcome	35.07%	37.46%	51.14%	81.39%	86.94%		



October 1st thru October 31st

	FY13-14			FY14-15			Change
	DOG	CAT	TOTAL	DOG	CAT	TOTAL	
INTAKE							
Owner Surrender	139	125	264	142	72	214	-18.9%
Returns	27	2	29	31	3	34	17.2%
Stray Over the Counter	166	384	550	174	373	547	-0.5%
Stray Impounded in Field	312	140	452	278	169	447	-1.1%
Confiscated/Investigations	78	7	85	35	1	36	-57.6%
Abandoned & Transferred In	33	0	33	13	0	13	-60.6%
Born in Shelter	7	0	7	0	0	0	-100.0%
LIVE INTAKE	762	658	1,420	673	618	1,291	-9.1%
OUTCOME							
Adoption	389	255	644	462	285	747	16.0%
Returned to Owner	96	8	104	82	6	88	-15.4%
Transfer HSTB	18	24	42	16	0	16	-61.9%
Sent to Rescue	149	370	519	92	112	204	-60.7%
Community Cat Returns		64	64		110	110	71.9%
Total Live Outcome	652	721	1,373	652	513	1,165	-15.1%
Died in Custody, Foster, Offsite	7	18	25	3	12	15	-40.0%
Euthanasia	174	114	288	70	89	159	-44.8%
Lost/Missing/Unaccounted For	0	1	1	0	1	1	0.0%
Non-Live Outcome	181	133	314	73	102	175	-44.3%
TOTAL OUTCOME	833	854	1,687	725	615	1,340	-20.6%
Total Live Out/Total Out	78.27%	84.43%	81.39%	89.93%	83.41%	86.94%	

<i>FY Totals (Current FY is YTD)</i>	FY09-10	FY10-11	FY11-12	FY12-13	FY13-14	FY14-15	FY YTD
Total Live Intake	22,807	20,118	20,099	21,493	16,893	14,778	1,291
Live Outcome	6,649	6,624	7,340	10,021	11,707	12,833	1,165
Non Live Outcome	16,155	13,528	12,691	11,960	5,017	2,600	175
Total Outcome	22,804	20,152	20,031	21,981	16,724	15,433	1,340
	FY09-10	FY10-11	FY11-12	FY12-13	FY13-14	FY14-15	FY YTD
Total Live Out/Total Out	29.16%	32.87%	36.64%	45.59%	70.00%	83.15%	86.94%



"Adoptions" in past years included some currently classified as "Sent to Rescue"

TNVR Program

	Released	Euthanasia
Oct-14	111	0
Nov-14		
Dec-14		
Jan-15		
Feb-15		
Mar-15		
Apr-15		
May-15		
Jun-15		
Jul-15		
Aug-15		
Sep-15		
FY Totals	111	0

Affordable Sterilization Vouchers

	Redeemed	Issued
Oct-14	380	1,022
Nov-14		
Dec-14		
Jan-15		
Feb-15		
Mar-15		
Apr-15		
May-15		
Jun-15		
Jul-15		
Aug-15		
Sep-15		
FY Totals	380	1,022

License Tag Sales

	FY12-13	FY13-14	FY14-15	FY15-16
October	\$205,414	\$173,625	\$144,685	\$116,482
November	\$150,956	\$118,822	\$108,896	
December	\$173,121	\$170,381	\$149,347	
January	\$172,037	\$154,744	\$135,602	
February	\$173,243	\$177,535	\$149,452	
March	\$224,642	\$187,225	\$189,842	
April	\$196,376	\$194,021	\$149,040	
May	\$226,391	\$127,320	\$161,296	
June	\$189,423	\$182,830	\$175,953	
July	\$86,202	\$187,091	\$122,197	
August	\$279,751	\$171,748	\$69,040	
September	\$171,112	\$166,110	\$222,404	
FY Totals	\$2,248,668	\$2,011,452	\$1,777,754	\$116,482

**August & September tag figures may be adjusted at final accounting for FY

* October figures are pre-verification with Clerk (may be adjusted)

Monthly Report: November 2015

Period Covered: November 1 thru 30, 2015

INTAKE	DOG	CAT	TOTAL
Owner Surrender	113	75	188
Returns	25	4	29
Stray Over the Counter	212	294	506
Stray Impounded in Field	203	97	300
Confiscated/Investigations	21	0	21
Abandoned & Transferred In	6	0	6
Born in Shelter	0	0	0
LIVE INTAKE	580	470	1,050
OUTCOME	DOG	CAT	TOTAL
Adoption	307	252	559
Returned to Owner	66	7	73
Transfer HSTB	20	16	36
Sent to Rescue	122	89	211
Community Cat Returns		74	74
Total Live Outcome	515	438	953
Died in Custody/Transport	4	5	9
Died in Foster/Rescue	0	5	5
Died Offsite/Unspecified	0	0	0
Euthanasia	61	55	116
Euth: Neonatal/Too Young	0	4	4
Lost/Missing/Unaccounted For	0	0	0
Non-Live Outcome	65	69	134
TOTAL OUTCOME	580	507	1,087

Noteworthy Events:

	DOG	CAT	TOTAL
Total Live Out/Total Out	88.79%	86.39%	87.67%

	DOG	CAT	TOTAL
Shelter Population	215	113	328
Animals in Foster Care	34	152	186
Total Inventory	249	265	514

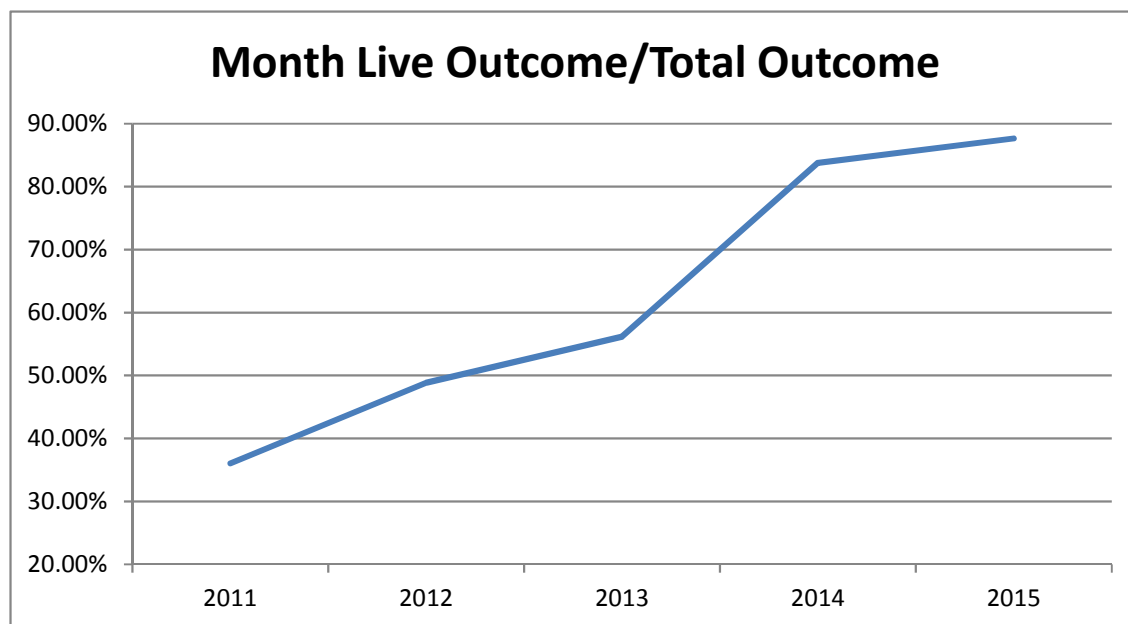
	DOG	CAT	TOTAL
Sterilizations Completed	259	267	526
Surgery other than S/N	11	6	17
Dental Cleanings	16	4	20
Exams	1,288	1,092	2,380
Unique Animals (Exams)	702	567	1,269
Treatments	3,949	3,343	7,292
Unique Animals (Treatments)	645	540	1,185
Care & Cleaning	6,070	4,029	10,099
Average Length of Stay	10.7	12.7	in days

Heartworm Treatments	7
----------------------	---

RTO in Field	14
Bite Case	157
Cruelty/Neglect	199
Dangerous Dog	0
Enforcement	233
Seizure	8
Stray	536
Transport	8
	1,155

Canine Neuter	141
Canine Spay	118
Feline Neuter	131
Feline Spay	136
Sterilizations	526

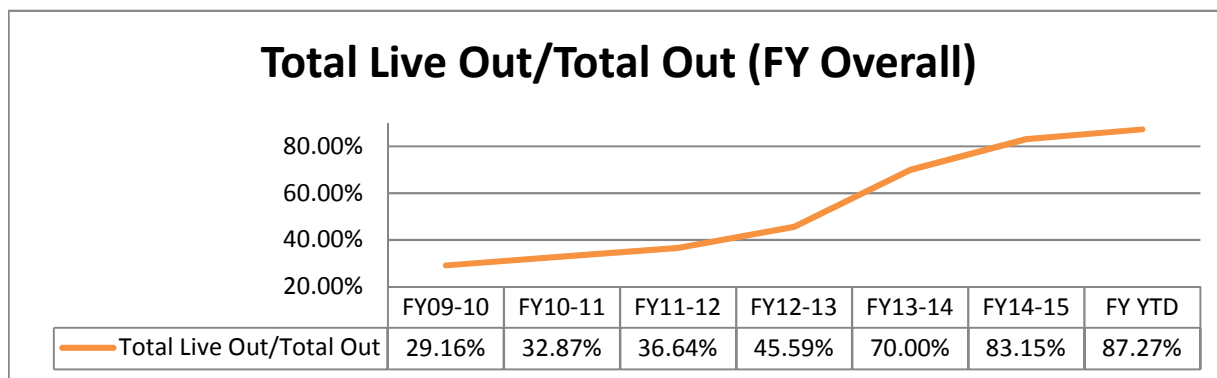
November 1-30, 2015	Last Year DOG	Nov-14 CAT	TOTAL	Current DOG	Nov-15 CAT	TOTAL	Change
INTAKE							
Owner Surrender	120	78	198	113	75	188	-5.1%
Returns	15	3	18	25	4	29	61.1%
Stray Over the Counter	118	230	348	212	294	506	45.4%
Stray Impounded in Field	224	123	347	203	97	300	-13.5%
Confiscated/Investigations	32	0	32	21	0	21	-34.4%
Abandoned & Transferred In	16	0	16	6	0	6	-62.5%
Born in Shelter	0	0	0	0	0	0	*
LIVE INTAKE	525	434	959	580	470	1,050	9.5%
OUTCOME							
Adoption	330	287	617	307	252	559	-9.4%
Returned to Owner	73	4	77	66	7	73	-5.2%
Transfer to HSTB	3	0	3	20	16	36	1100.0%
Sent to Rescue	109	282	391	122	89	211	-46.0%
Community Cat Returns		49	49		74	74	51.0%
Total Live Outcome	515	622	1,137	515	438	953	-16.2%
Died in Custody/Transport	2	54	56	4	10	14	-75.0%
Euthanasia	90	72	162	61	59	120	-25.9%
Lost/Missing/Unaccounted For	0	2	2	0	0	0	*
Non-Live Outcome	92	128	220	65	69	134	-39.1%
TOTAL OUTCOME	607	750	1,357	580	507	1,087	-19.9%
Total Live Out/Total Out	84.84%	82.93%	83.79%	88.79%	86.39%	87.67%	
Monthly Comparisons	2011	2012	2013	2014	2015		
Live Outcome/Total Outcome	36.04%	48.84%	56.18%	83.79%	87.67%		



October 1st thru November 30th

	FY14-15			FY15-16			Change
	DOG	CAT	TOTAL	DOG	CAT	TOTAL	
INTAKE							
Owner Surrender	259	203	462	255	147	402	-13.0%
Returns	42	6	48	56	7	63	31.3%
Stray Over the Counter	284	614	898	386	667	1,053	17.3%
Stray Impounded in Field	536	263	799	481	266	747	-6.5%
Confiscated/Investigations	110	7	117	56	1	57	-51.3%
Abandoned & Transferred In	49	0	49	19	0	19	-61.2%
Born in Shelter	7	0	7	0	0	0	-100.0%
LIVE INTAKE	1,287	1,093	2,380	1,253	1,088	2,341	-1.6%
OUTCOME							
Adoption	719	542	1,261	769	537	1,306	3.6%
Returned to Owner	169	12	181	148	13	161	-11.0%
Transfer HSTB	21	24	45	36	16	52	15.6%
Sent to Rescue	258	652	910	214	201	415	-54.4%
Community Cat Returns		113	113		184	184	62.8%
Total Live Outcome	1,167	1,343	2,510	1,167	951	2,118	-15.6%
Died in Custody, Foster, Offsite	9	72	81	7	22	29	-64.2%
Euthanasia	264	186	450	131	148	279	-38.0%
Lost/Missing/Unaccounted For	0	3	3	0	1	1	-66.7%
Non-Live Outcome	273	261	534	138	171	309	-42.1%
TOTAL OUTCOME	1,440	1,604	3,044	1,305	1,122	2,427	-20.3%
Total Live Out/Total Out	81.04%	83.73%	82.46%	89.43%	84.76%	87.27%	

<i>FY Totals (Current FY is YTD)</i>	FY09-10	FY10-11	FY11-12	FY12-13	FY13-14	FY14-15	FY YTD
Total Live Intake	22,807	20,118	20,099	21,493	16,893	14,778	2,341
Live Outcome	6,649	6,624	7,340	10,021	11,707	12,833	2,118
Non Live Outcome	16,155	13,528	12,691	11,960	5,017	2,600	309
Total Outcome	22,804	20,152	20,031	21,981	16,724	15,433	2,427
	FY09-10	FY10-11	FY11-12	FY12-13	FY13-14	FY14-15	FY YTD
Total Live Out/Total Out	29.16%	32.87%	36.64%	45.59%	70.00%	83.15%	87.27%



"Adoptions" in past years included some currently classified as "Sent to Rescue"

TNVR Program

	Released	Euthanasia
Oct-14	111	0
Nov-14	74	0
Dec-14		
Jan-15		
Feb-15		
Mar-15		
Apr-15		
May-15		
Jun-15		
Jul-15		
Aug-15		
Sep-15		
FY Totals	185	0

Affordable Sterilization Vouchers

	Redeemed	Issued
Oct-14	380	1,022
Nov-14	612	810
Dec-14		
Jan-15		
Feb-15		
Mar-15		
Apr-15		
May-15		
Jun-15		
Jul-15		
Aug-15		
Sep-15		
FY Totals	992	1,832

License Tag Sales

	FY12-13	FY13-14	FY14-15	FY15-16
October	\$205,414	\$173,625	\$144,685	\$116,482
November	\$150,956	\$118,822	\$108,896	\$79,155
December	\$173,121	\$170,381	\$149,347	
January	\$172,037	\$154,744	\$135,602	
February	\$173,243	\$177,535	\$149,452	
March	\$224,642	\$187,225	\$189,842	
April	\$196,376	\$194,021	\$149,040	
May	\$226,391	\$127,320	\$161,296	
June	\$189,423	\$182,830	\$175,953	
July	\$86,202	\$187,091	\$122,197	
August	\$279,751	\$171,748	\$69,040	
September	\$171,112	\$166,110	\$222,404	
FY Totals	\$2,248,668	\$2,011,452	\$1,777,754	\$195,637

* Current monthly figures are pre-verification with Clerk (may be adjusted)

Monthly Report: December 2015

Period Covered: December 1 thru 31, 2015

INTAKE	DOG	CAT	TOTAL
Owner Surrender	133	114	247
Returns	26	12	38
Stray Over the Counter	200	251	451
Stray Impounded in Field	238	110	348
Confiscated/Investigations	16	2	18
Abandoned & Transferred In	8	0	8
Born in Shelter	2	0	2
LIVE INTAKE	623	489	1,112
OUTCOME	DOG	CAT	TOTAL
Adoption	369	291	660
Returned to Owner	77	5	82
Transfer HSTB	19	7	26
Sent to Rescue	139	120	259
Community Cat Returns		46	46
Total Live Outcome	604	469	1,073
Died in Custody/Transport	1	4	5
Died in Foster/Rescue	0	3	3
Died Offsite/Unspecified	0	0	0
Euthanasia	61	49	110
Euth: Neonatal/Too Young	0	7	7
Lost/Missing/Unaccounted For	0	1	1
Non-Live Outcome	62	64	126
TOTAL OUTCOME	666	533	1,199

Noteworthy Events:

	DOG	CAT	TOTAL
Total Live Out/Total Out	90.69%	87.99%	89.49%

	DOG	CAT	TOTAL
Shelter Population	180	104	284
Animals in Foster Care	28	115	143
Total Inventory	208	219	427

	DOG	CAT	TOTAL
Sterilizations Completed	273	329	602
Surgery other than S/N	12	5	17
Dental Procedures	0	0	0
Exams	1,335	1,156	2,491
Unique Animals (Exams)	651	577	1,228
Treatments	4,293	3,102	7,395
Unique Animals (Treatments)	647	535	1,182
Care & Cleaning	5,757	3,552	9,309
Average Length of Stay	12.8	14.8	in days

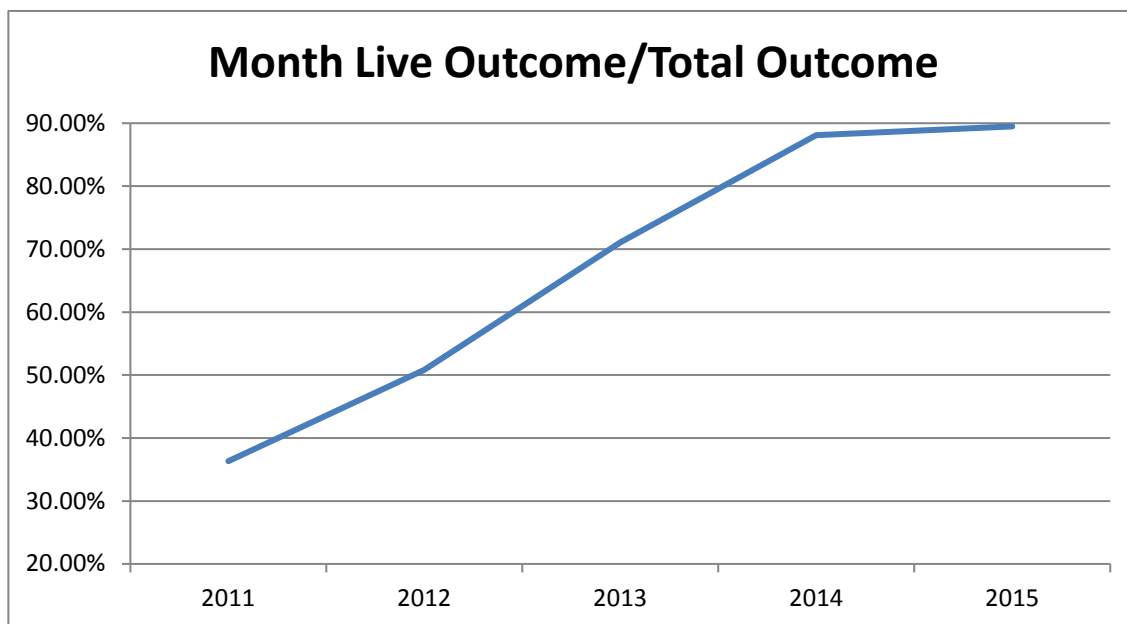
Heartworm Treatments	8
----------------------	---

RTO in Field	9
Bite Case	158
Cruelty/Neglect	257
Dangerous Dog	0
Enforcement	322
Seizure	9
Stray	532
Transport	6
	1,293

Canine Neuter	161
Canine Spay	112
Feline Neuter	145
Feline Spay	184
Sterilizations	602

Monthly Data

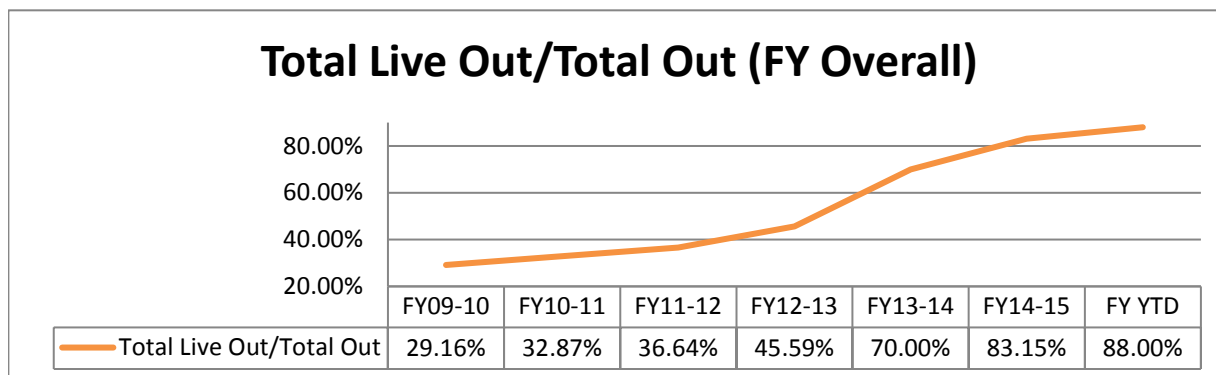
	Last Year			Current			Change
	DOG	CAT	TOTAL	DOG	CAT	TOTAL	
INTAKE							
Owner Surrender	140	62	202	133	114	247	22.3%
Returns	32	4	36	26	12	38	5.6%
Stray Over the Counter	182	254	436	200	251	451	3.4%
Stray Impounded in Field	228	89	317	238	110	348	9.8%
Confiscated/Investigations	38	5	43	16	2	18	-58.1%
Abandoned & Transferred In	24	1	25	8	0	8	-68.0%
Born in Shelter	0	0	0	2	0	2	*
LIVE INTAKE	644	415	1,059	623	489	1,112	5.0%
OUTCOME							
Adoption	383	288	671	369	291	660	-1.6%
Returned to Owner	59	3	62	77	5	82	32.3%
Transfer to HSTB	3	0	3	19	7	26	766.7%
Sent to Rescue	138	191	329	139	120	259	-21.3%
Community Cat Returns		81	81		46	46	-43.2%
Total Live Outcome	583	563	1,146	604	469	1,073	-6.4%
Died in Custody/Transport	3	17	20	1	7	8	-60.0%
Euthanasia	85	50	135	61	56	117	-13.3%
Lost/Missing/Unaccounted For	0	0	0	0	1	1	*
Non-Live Outcome	88	67	155	62	64	126	-18.7%
TOTAL OUTCOME	671	630	1,301	666	533	1,199	-7.8%
Total Live Out/Total Out	86.89%	89.37%	88.09%	90.69%	87.99%	89.49%	
Monthly Comparisons	2011	2012	2013	2014	2015		
Live Outcome/Total Outcome	36.32%	50.82%	71.05%	88.09%	89.49%		



October 1st thru December 31st

	FY14-15			FY15-16			Change
	DOG	CAT	TOTAL	DOG	CAT	TOTAL	
INTAKE							
Owner Surrender	399	264	663	388	261	649	-2.1%
Returns	74	11	85	82	19	101	18.8%
Stray Over the Counter	466	868	1,334	586	918	1,504	12.7%
Stray Impounded in Field	764	352	1,116	719	376	1,095	-1.9%
Confiscated/Investigations	148	12	160	72	3	75	-53.1%
Abandoned & Transferred In	73	1	74	27	0	27	-63.5%
Born in Shelter	7	0	7	2	0	2	-71.4%
LIVE INTAKE	1,931	1,508	3,439	1,876	1,577	3,453	0.4%
OUTCOME							
Adoption	1,102	830	1,932	1,138	828	1,966	1.8%
Returned to Owner	228	15	243	225	18	243	0.0%
Transfer HSTB			0			0	#DIV/0!
Sent to Rescue	420	867	1,287	408	344	752	-41.6%
Community Cat Returns		194	194		230	230	18.6%
Total Live Outcome	1,750	1,906	3,656	1,771	1,420	3,191	-12.7%
Died in Custody, Foster, Offsite	12	89	101	8	29	37	-63.4%
Euthanasia	349	236	585	192	204	396	-32.3%
Lost/Missing/Unaccounted For	0	3	3	0	2	2	-33.3%
Non-Live Outcome	361	328	689	200	235	435	-36.9%
TOTAL OUTCOME	2,111	2,234	4,345	1,971	1,655	3,626	-16.5%
Total Live Out/Total Out	82.90%	85.32%	84.14%	89.85%	85.80%	88.00%	

<i>FY Totals (Current FY is YTD)</i>	FY09-10	FY10-11	FY11-12	FY12-13	FY13-14	FY14-15	FY YTD
Total Live Intake	22,807	20,118	20,099	21,493	16,893	14,778	3,453
Live Outcome	6,649	6,624	7,340	10,021	11,707	12,833	3,191
Non Live Outcome	16,155	13,528	12,691	11,960	5,017	2,600	435
Total Outcome	22,804	20,152	20,031	21,981	16,724	15,433	3,626
	FY09-10	FY10-11	FY11-12	FY12-13	FY13-14	FY14-15	FY YTD
Total Live Out/Total Out	29.16%	32.87%	36.64%	45.59%	70.00%	83.15%	88.00%



"Adoptions" in past years included some currently classified as "Sent to Rescue"

TNVR Program

	Released	Euthanasia
Oct-15	111	0
Nov-15	74	0
Dec-15	45	0
Jan-16		
Feb-16		
Mar-16		
Apr-16		
May-16		
Jun-16		
Jul-16		
Aug-16		
Sep-16		
FY Totals	230	0

Affordable Sterilization Vouchers

	Redeemed	Issued
Oct-15	380	1,022
Nov-15	612	810
Dec-15	831	786
Jan-16		
Feb-16		
Mar-16		
Apr-16		
May-16		
Jun-16		
Jul-16		
Aug-16		
Sep-16		
FY Totals	1,823	2,618

License Tag Sales

	FY12-13	FY13-14	FY14-15	FY15-16
October	\$205,414	\$173,625	\$144,685	\$116,482
November	\$150,956	\$118,822	\$108,896	\$130,315
December	\$173,121	\$170,381	\$149,347	\$162,215
January	\$172,037	\$154,744	\$135,602	
February	\$173,243	\$177,535	\$149,452	
March	\$224,642	\$187,225	\$189,842	
April	\$196,376	\$194,021	\$149,040	
May	\$226,391	\$127,320	\$161,296	
June	\$189,423	\$182,830	\$175,953	
July	\$86,202	\$187,091	\$122,197	
August	\$279,751	\$171,748	\$69,040	
September	\$171,112	\$166,110	\$222,404	
FY Totals	\$2,248,668	\$2,011,452	\$1,777,754	\$409,012

* Current monthly figures are pre-verification with Clerk (may be adjusted)

Monthly Report: January 2016

Period Covered: January 1 thru 31, 2016

INTAKE	DOG	CAT	TOTAL
Owner Surrender	147	71	218
Returns	25	5	30
Stray Over the Counter	211	186	397
Stray Impounded in Field	283	93	376
Confiscated/Investigations	13	0	13
Abandoned & Transferred In	12	0	12
Born in Shelter	1	0	1
LIVE INTAKE	692	355	1,047
OUTCOME	DOG	CAT	TOTAL
Adoption	369	207	576
Returned to Owner	99	5	104
Transfer HSTB	8	21	29
Sent to Rescue	158	86	244
Community Cat Returns		54	54
Total Live Outcome	634	373	1,007
Died in Custody/Transport	4	0	4
Died in Foster/Rescue	0	0	0
Died Offsite/Unspecified	0	0	0
Euthanasia	38	44	82
Euth: Neonatal/Too Young	0	5	5
Lost/Missing/Unaccounted For	0	0	0
Non-Live Outcome	42	49	91
TOTAL OUTCOME	676	422	1,098

DOG CAT TOTAL

Total Live Out/Total Out	93.79%	88.39%	91.71%
--------------------------	---------------	---------------	---------------

DOG CAT TOTAL

Shelter Population	181	63	244
Animals in Foster Care	43	89	132
Total Inventory	224	152	376

DOG CAT TOTAL

Sterilizations Completed	312	207	519
Surgery other than S/N	17	7	24
Dental Procedures	0	0	0
Exams	1,470	734	2,204
Unique Animals (Exams)	690	409	1,099
Treatments	4,677	1,941	6,618
Unique Animals (Treatments)	662	379	1,041
Care & Cleaning	6,987	5,566	12,553
Average Length of Stay	10.0	10.5	in days

Heartworm Treatments	6
----------------------	---

Noteworthy Events:

Lobby Renovation Completed and CO issued in late January

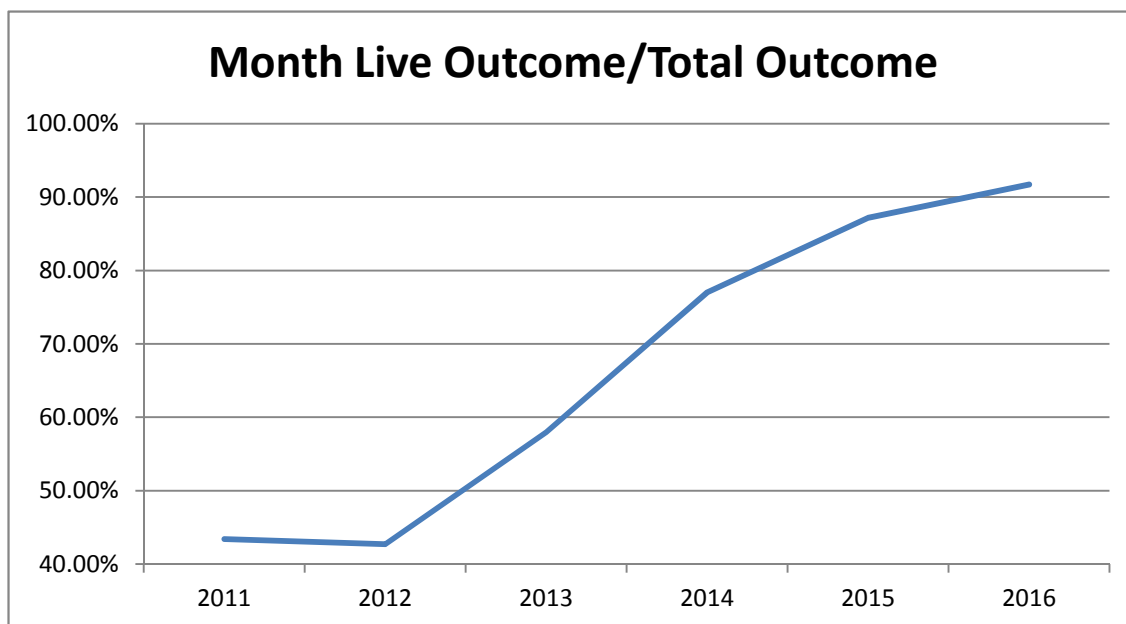
Kennel Roofing is nearing completion of phase one of five. Expect phase two to start mid-February weather permitting

RTO in Field	2
Bite Case	140
Cruelty/Neglect	246
Dangerous Dog	0
Enforcement	303
Seizure	5
Stray	626
Transport	11
	1,333

Canine Neuter	177
Canine Spay	135
Feline Neuter	96
Feline Spay	111
Sterilizations	519

Monthly Data

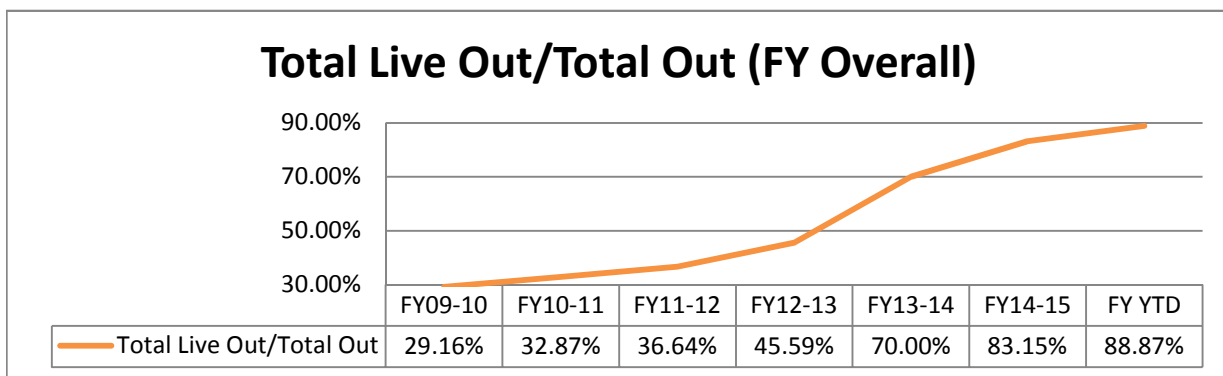
	Last Year			Current			Change
	DOG	CAT	TOTAL	DOG	CAT	TOTAL	
INTAKE							
Owner Surrender	190	67	257	147	71	218	-15.2%
Returns	21	7	28	25	5	30	7.1%
Stray Over the Counter	167	162	329	211	186	397	20.7%
Stray Impounded in Field	230	102	332	283	93	376	13.3%
Confiscated/Investigations	38	6	44	13	0	13	-70.5%
Abandoned & Transferred In	20	0	20	12	0	12	-40.0%
Born in Shelter	8	0	8	1	0	1	-87.5%
LIVE INTAKE	674	344	1,018	692	355	1,047	2.8%
OUTCOME							
Adoption	373	140	513	369	207	576	12.3%
Returned to Owner	59	3	62	99	5	104	67.7%
Transfer to HSTB	0	0	0	8	21	29	100.0%
Sent to Rescue	128	57	185	158	86	244	31.9%
Community Cat Returns		63	63		54	54	-14.3%
Total Live Outcome	560	263	823	634	373	1,007	22.4%
Died in Custody/Transport	7	9	16	4	0	4	-75.0%
Euthanasia	53	51	104	38	49	87	-16.3%
Lost/Missing/Unaccounted For	1	0	1	0	0	0	-100.0%
Non-Live Outcome	61	60	121	42	49	91	-24.8%
TOTAL OUTCOME	621	323	944	676	422	1,098	16.3%
Total Live Out/Total Out	90.18%	81.42%	87.18%	93.79%	88.39%	91.71%	
Monthly Comparisons	2011	2012	2013	2014	2015	2016	
Live Outcome/Total Outcome	43.43%	42.73%	57.98%	77.02%	87.18%	91.71%	



October 1st January 31st

	FY14-15			FY15-16			Change
	DOG	CAT	TOTAL	DOG	CAT	TOTAL	
INTAKE							
Owner Surrender	589	331	920	535	332	867	-5.8%
Returns	95	18	113	107	24	131	15.9%
Stray Over the Counter	633	1,030	1,663	797	1,104	1,901	14.3%
Stray Impounded in Field	994	454	1,448	1,002	469	1,471	1.6%
Confiscated/Investigations	186	18	204	85	3	88	-56.9%
Abandoned & Transferred In	93	1	94	39	0	39	-58.5%
Born in Shelter	15	0	15	3	0	3	-80.0%
LIVE INTAKE	2,605	1,852	4,457	2,568	1,932	4,500	1.0%
OUTCOME							
Adoption	1,475	970	2,445	1,507	1,035	2,542	4.0%
Returned to Owner	287	18	305	324	23	347	13.8%
Transfer HSTB	24	24	48	63	44	107	122.9%
Sent to Rescue	524	900	1,424	511	407	918	-35.5%
Community Cat Returns		257	257		284	284	10.5%
Total Live Outcome	2,310	2,169	4,479	2,405	1,793	4,198	-6.3%
Died in Custody, Foster, Offsite	19	98	117	12	29	41	-65.0%
Euthanasia	402	287	689	230	253	483	-29.9%
Lost/Missing/Unaccounted For	1	3	4	0	2	2	-50.0%
Non-Live Outcome	422	388	810	242	284	526	-35.1%
TOTAL OUTCOME	2,732	2,557	5,289	2,647	2,077	4,724	-10.7%
Total Live Out/Total Out	84.55%	84.83%	84.69%	90.86%	86.33%	88.87%	

<i>FY Totals (Current FY is YTD)</i>	FY09-10	FY10-11	FY11-12	FY12-13	FY13-14	FY14-15	FY YTD
Total Live Intake	22,807	20,118	20,099	21,493	16,893	14,778	4,500
Live Outcome	6,649	6,624	7,340	10,021	11,707	12,833	4,198
Non Live Outcome	16,155	13,528	12,691	11,960	5,017	2,600	526
Total Outcome	22,804	20,152	20,031	21,981	16,724	15,433	4,724
	FY09-10	FY10-11	FY11-12	FY12-13	FY13-14	FY14-15	FY YTD
Total Live Out/Total Out	29.16%	32.87%	36.64%	45.59%	70.00%	83.15%	88.87%



"Adoptions" in past years included some currently classified as "Sent to Rescue"

TNVR Program

	Released	Euthanasia
Oct-15	111	0
Nov-15	74	0
Dec-15	45	0
Jan-16	52	1
Feb-16		
Mar-16		
Apr-16		
May-16		
Jun-16		
Jul-16		
Aug-16		
Sep-16		
FY Totals	282	1

Affordable Sterilization Vouchers

	Redeemed	Issued
Oct-15	380	1,022
Nov-15	612	810
Dec-15	831	786
Jan-16	409	879
Feb-16		
Mar-16		
Apr-16		
May-16		
Jun-16		
Jul-16		
Aug-16		
Sep-16		
FY Totals	2,232	3,497

License Tag Sales

	FY12-13	FY13-14	FY14-15	FY15-16
October	\$205,414	\$173,625	\$144,685	\$116,482
November	\$150,956	\$118,822	\$108,896	\$130,315
December	\$173,121	\$170,381	\$149,347	\$162,215
January	\$172,037	\$154,744	\$135,602	\$96,116
February	\$173,243	\$177,535	\$149,452	
March	\$224,642	\$187,225	\$189,842	
April	\$196,376	\$194,021	\$149,040	
May	\$226,391	\$127,320	\$161,296	
June	\$189,423	\$182,830	\$175,953	
July	\$86,202	\$187,091	\$122,197	
August	\$279,751	\$171,748	\$69,040	
September	\$171,112	\$166,110	\$222,404	
FY Totals	\$2,248,668	\$2,011,452	\$1,777,754	\$505,128

* Current monthly figures are pre-verification with Clerk (may be adjusted)

Monthly Report: February 2016

Period Covered: February 1 thru 29, 2016

INTAKE	DOG	CAT	TOTAL
Owner Surrender	183	94	277
Returns	34	10	44
Stray Over the Counter	233	199	432
Stray Impounded in Field	179	96	275
Confiscated/Investigations	21	10	31
Abandoned & Transferred In	12	0	12
Born in Shelter	0	1	1
LIVE INTAKE	662	410	1,072
OUTCOME	DOG	CAT	TOTAL
Adoption	377	198	575
Returned to Owner	75	3	78
Transfer HSTB	11	35	46
Sent to Rescue	144	117	261
Community Cat Returns		54	54
Total Live Outcome	607	407	1,014
Died in Custody/Transport	2	2	4
Died in Foster/Rescue	0	0	0
Died Offsite/Unspecified	1	1	2
Euthanasia	39	37	76
Euth: Neonatal/Too Young	0	1	1
Lost/Missing/Unaccounted For	0	1	1
Non-Live Outcome	42	42	84
TOTAL OUTCOME	649	449	1,098

Noteworthy Events:

	DOG	CAT	TOTAL
Total Live Out/Total Out	93.53%	90.65%	92.35%

	DOG	CAT	TOTAL
Shelter Population	200	59	259
Animals in Foster Care	37	53	90
Total Inventory	237	112	349

	DOG	CAT	TOTAL
Sterilizations Completed	272	218	490
Surgery other than S/N	15	11	26
Dental Procedures	0	0	0
Exams	735	1,439	2,174
Unique Animals (Exams)	419	674	1,093
Treatments	4,510	1,848	6,358
Unique Animals (Treatments)	654	400	1,054
Care & Cleaning	6,674	4,018	10,692
Average Length of Stay	9.5	17.7	in days

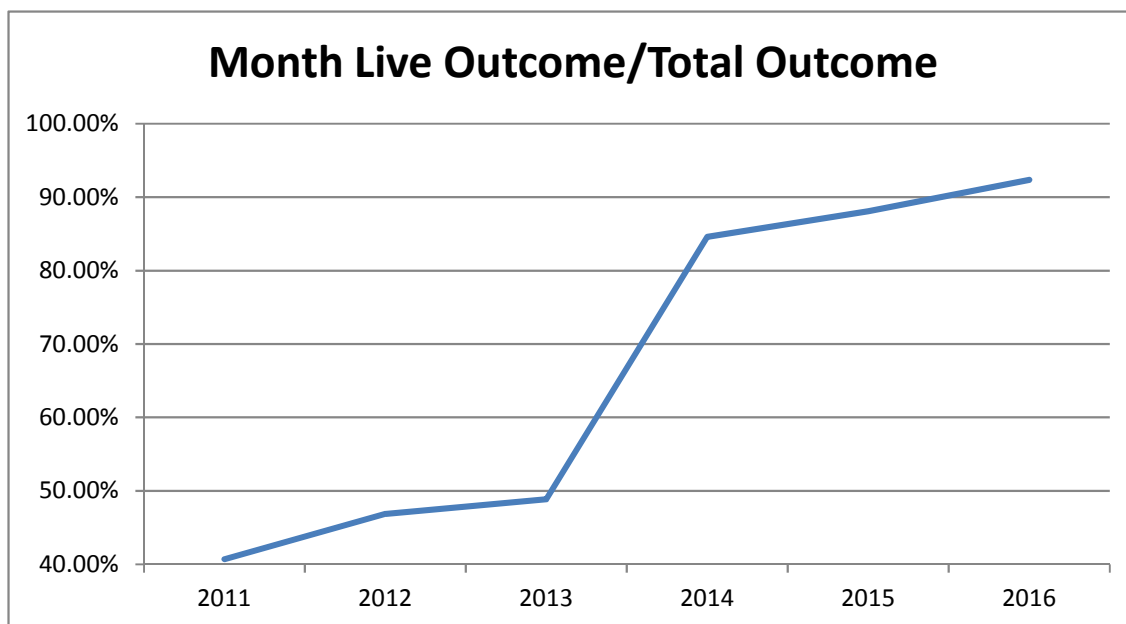
Heartworm Treatments	10
----------------------	----

RTO in Field	8
Bite Case	137
Cruelty/Neglect	224
Dangerous Dog	0
Enforcement	257
Seizure	8
Stray	575
Transport	8
	1,217

Canine Neuter	151
Canine Spay	121
Feline Neuter	112
Feline Spay	106
Sterilizations	490

Monthly Data

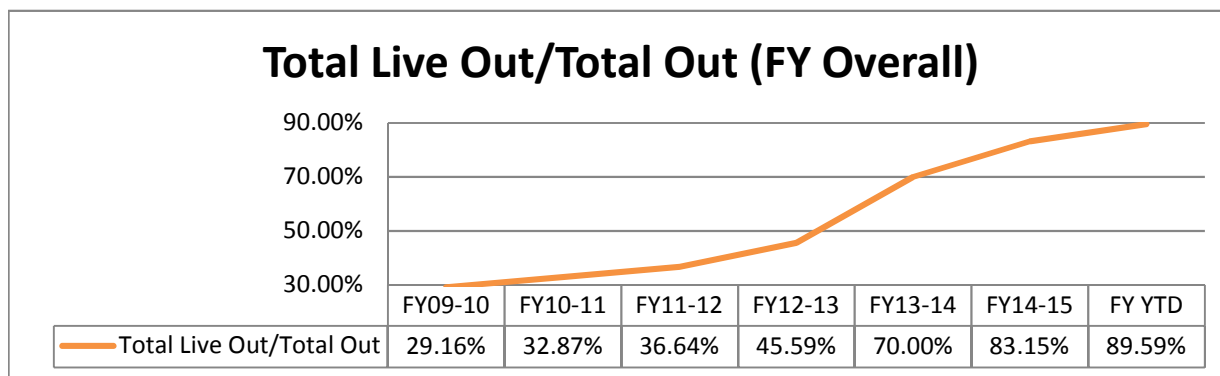
	Last Year			Current			Change
	DOG	CAT	TOTAL	DOG	CAT	TOTAL	
INTAKE							
Owner Surrender	168	59	227	183	94	277	22.0%
Returns	33	9	42	34	10	44	4.8%
Stray Over the Counter	142	157	299	233	199	432	44.5%
Stray Impounded in Field	235	95	330	179	96	275	-16.7%
Confiscated/Investigations	30	1	31	21	10	31	0.0%
Abandoned & Transferred In	12	0	12	12	0	12	0.0%
Born in Shelter	0	0	0	0	1	1	*
LIVE INTAKE	620	321	941	662	410	1,072	13.9%
OUTCOME							
Adoption	362	129	491	377	198	575	17.1%
Returned to Owner	74	8	82	75	3	78	-4.9%
Transfer to HSTB	0	0	0	11	35	46	100.0%
Sent to Rescue	105	99	204	144	117	261	27.9%
Community Cat Returns		59	59		54	54	-8.5%
Total Live Outcome	541	295	836	607	407	1,014	21.3%
Died in Custody/Transport	9	6	15	3	3	6	-60.0%
Euthanasia	60	36	96	39	38	77	-19.8%
Lost/Missing/Unaccounted For	0	2	2	0	1	1	-100.0%
Non-Live Outcome	69	44	113	42	42	84	-25.7%
TOTAL OUTCOME	610	339	949	649	449	1,098	15.7%
Total Live Out/Total Out	88.69%	87.02%	88.09%	93.53%	90.65%	92.35%	
Monthly Comparisons	2011	2012	2013	2014	2015	2016	
Live Outcome/Total Outcome	40.69%	46.85%	48.84%	84.61%	88.09%	92.35%	



October 1st - February 29th

	FY14-15			FY15-16			Change
	DOG	CAT	TOTAL	DOG	CAT	TOTAL	
INTAKE							
Owner Surrender	757	390	1,147	718	426	1,144	-0.3%
Returns	128	27	155	141	34	175	12.9%
Stray Over the Counter	775	1,187	1,962	1,030	1,303	2,333	18.9%
Stray Impounded in Field	1,229	549	1,778	1,181	565	1,746	-1.8%
Confiscated/Investigations	216	19	235	106	13	119	-49.4%
Abandoned & Transferred In	105	1	106	51	0	51	-51.9%
Born in Shelter	15	0	15	3	1	4	-73.3%
LIVE INTAKE	3,225	2,173	5,398	3,230	2,342	5,572	3.2%
OUTCOME							
Adoption	1,837	1,099	2,936	1,884	1,233	3,117	6.2%
Returned to Owner	361	26	387	399	26	425	9.8%
Transfer HSTB	24	24	48	74	79	153	218.8%
Sent to Rescue	629	999	1,628	695	524	1,219	-25.1%
Community Cat Returns		316	316		338	338	7.0%
Total Live Outcome	2,851	2,464	5,315	3,052	2,200	5,252	-1.2%
Died in Custody, Foster, Offsite	28	104	132	15	32	47	-64.4%
Euthanasia	462	323	785	269	291	560	-28.7%
Lost/Missing/Unaccounted For	1	5	6	0	3	3	-50.0%
Non-Live Outcome	491	432	923	284	326	610	-33.9%
TOTAL OUTCOME	3,342	2,896	6,238	3,336	2,526	5,862	-6.0%
Total Live Out/Total Out	85.31%	85.08%	85.20%	91.49%	87.09%	89.59%	

<i>FY Totals (Current FY is YTD)</i>	FY09-10	FY10-11	FY11-12	FY12-13	FY13-14	FY14-15	FY YTD
Total Live Intake	22,807	20,118	20,099	21,493	16,893	14,778	5,572
Live Outcome	6,649	6,624	7,340	10,021	11,707	12,833	5,252
Non Live Outcome	16,155	13,528	12,691	11,960	5,017	2,600	610
Total Outcome	22,804	20,152	20,031	21,981	16,724	15,433	5,862
	FY09-10	FY10-11	FY11-12	FY12-13	FY13-14	FY14-15	FY YTD
Total Live Out/Total Out	29.16%	32.87%	36.64%	45.59%	70.00%	83.15%	89.59%



"Adoptions" in past years included some currently classified as "Sent to Rescue"

TNVR Program

	Released	Euthanasia
Oct-15	111	0
Nov-15	74	0
Dec-15	45	0
Jan-16	52	1
Feb-16	49	1
Mar-16		
Apr-16		
May-16		
Jun-16		
Jul-16		
Aug-16		
Sep-16		
FY Totals	331	2

Affordable Sterilization Vouchers

	Redeemed	Issued
Oct-15	380	1,022
Nov-15	612	810
Dec-15	831	786
Jan-16	409	879
Feb-16	481	832
Mar-16		
Apr-16		
May-16		
Jun-16		
Jul-16		
Aug-16		
Sep-16		
FY Totals	2,713	4,329

License Tag Sales

	FY12-13	FY13-14	FY14-15	FY15-16
October	\$205,414	\$173,625	\$144,685	\$116,482
November	\$150,956	\$118,822	\$108,896	\$130,315
December	\$173,121	\$170,381	\$149,347	\$162,215
January	\$172,037	\$154,744	\$135,602	\$96,636
February	\$173,243	\$177,535	\$149,452	\$128,698
March	\$224,642	\$187,225	\$189,842	
April	\$196,376	\$194,021	\$149,040	
May	\$226,391	\$127,320	\$161,296	
June	\$189,423	\$182,830	\$175,953	
July	\$86,202	\$187,091	\$122,197	
August	\$279,751	\$171,748	\$69,040	
September	\$171,112	\$166,110	\$222,404	
FY Totals	\$2,248,668	\$2,011,452	\$1,777,754	\$634,346

* Current monthly figures are pre-verification with Clerk (may be adjusted)

Monthly Report: March 2016

Period Covered: March 1 through 31, 2016

INTAKE	DOG	CAT	TOTAL
Owner Surrender	145	127	272
Returns	27	2	29
Stray Over the Counter	270	255	525
Stray Impounded in Field	209	93	302
Confiscated/Investigations	18	5	23
Abandoned & Transferred In	14	0	14
Born in Shelter	0	0	0
LIVE INTAKE	683	482	1,165
OUTCOME	DOG	CAT	TOTAL
Adoption	381	184	565
Returned to Owner	85	8	93
Transfer HSTB	18	21	39
Sent to Rescue	143	81	224
Community Cat Returns		52	52
Total Live Outcome	627	346	973
Died in Custody/Transport	0	2	2
Died in Foster/Rescue	4	1	5
Died Offsite/Unspecified	1	1	2
Euthanasia	43	65	108
Euth: Neonatal/Too Young	0	7	7
Lost/Missing/Unaccounted For	0	0	0
Non-Live Outcome	48	76	124
TOTAL OUTCOME	675	422	1,097

Noteworthy Events:

Phase 2 of the 5 phase re-roofing is nearing completion.

	DOG	CAT	TOTAL
Total Live Out/Total Out	92.89%	81.99%	88.70%

	DOG	CAT	TOTAL
Shelter Population	206	89	295
Animals in Foster Care	39	82	121
Total Inventory	245	171	416

	DOG	CAT	TOTAL
Sterilizations Completed	271	189	460
Surgery other than S/N	21	5	26
Dental Procedures	0	0	0
Exams	1,642	970	2,612
Unique Animals (Exams)	728	526	1,254
Treatments	5,495	1,978	7,473
Unique Animals (Treatments)	718	462	1,180
Care & Cleaning	6,852	3,592	10,444
Average Length of Stay	10.2	8.4	in days

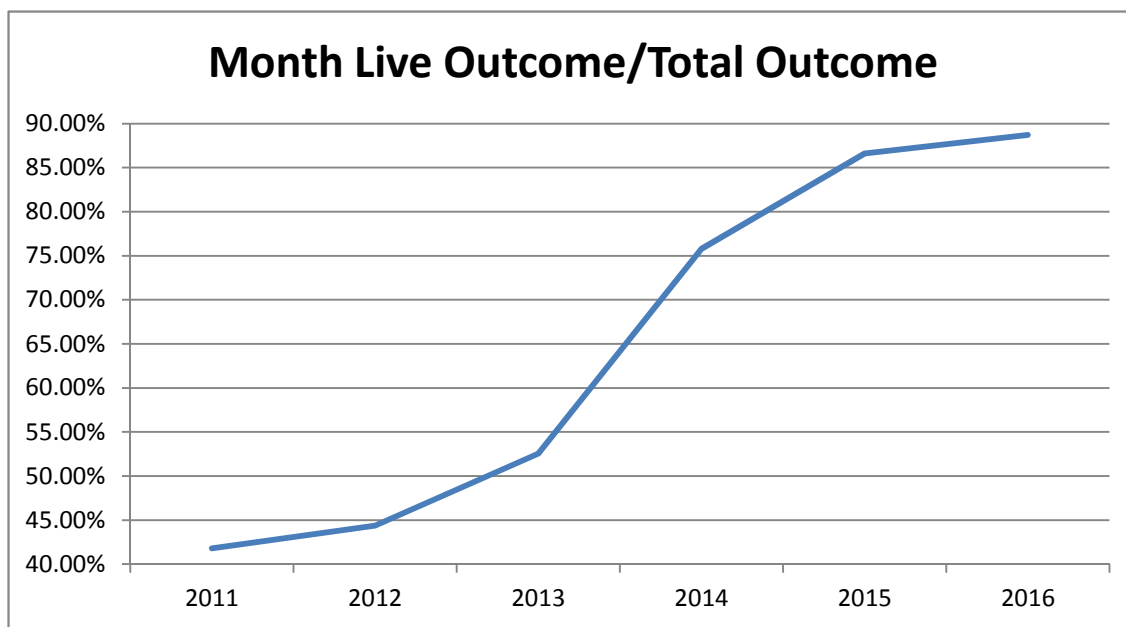
Heartworm Treatments	8
----------------------	---

RTO in Field	7
Bite Case	165
Cruelty/Neglect	246
Dangerous Dog	0
Enforcement	291
Seizure	3
Stray	571
Transport	13
	1,296

Canine Neuter	151
Canine Spay	120
Feline Neuter	75
Feline Spay	114
Sterilizations	460

Monthly Data

	Last Year			Current			Change
	DOG	CAT	TOTAL	DOG	CAT	TOTAL	
INTAKE							
Owner Surrender	176	97	273	145	127	272	-0.4%
Returns	21	5	26	27	2	29	11.5%
Stray Over the Counter	164	185	349	270	255	525	50.4%
Stray Impounded in Field	304	126	430	209	93	302	-29.8%
Confiscated/Investigations	22	0	22	18	5	23	4.5%
Abandoned & Transferred In	23	0	23	14	0	14	-39.1%
Born in Shelter	5	9	14	0	0	0	-100.0%
LIVE INTAKE	715	422	1,137	683	482	1,165	2.5%
OUTCOME							
Adoption	407	126	533	381	184	565	6.0%
Returned to Owner	101	5	106	85	8	93	-12.3%
Transfer to HSTB	0	0	0	18	21	39	100.0%
Sent to Rescue	125	126	251	143	81	224	-10.8%
Community Cat Returns		49	49		52	52	6.1%
Total Live Outcome	633	306	939	627	346	973	3.6%
Died in Custody/Transport	5	17	22	5	4	9	-59.1%
Euthanasia	76	46	122	43	72	115	-5.7%
Lost/Missing/Unaccounted For	0	1	1	0	0	0	-100.0%
Non-Live Outcome	81	64	145	48	76	124	-14.5%
TOTAL OUTCOME	714	370	1,084	675	422	1,097	1.2%
Total Live Out/Total Out	88.66%	82.70%	86.62%	92.89%	81.99%	88.70%	
Monthly Comparisons	2011	2012	2013	2014	2015	2016	
Live Outcome/Total Outcome	41.78%	44.36%	52.54%	75.78%	86.62%	88.70%	

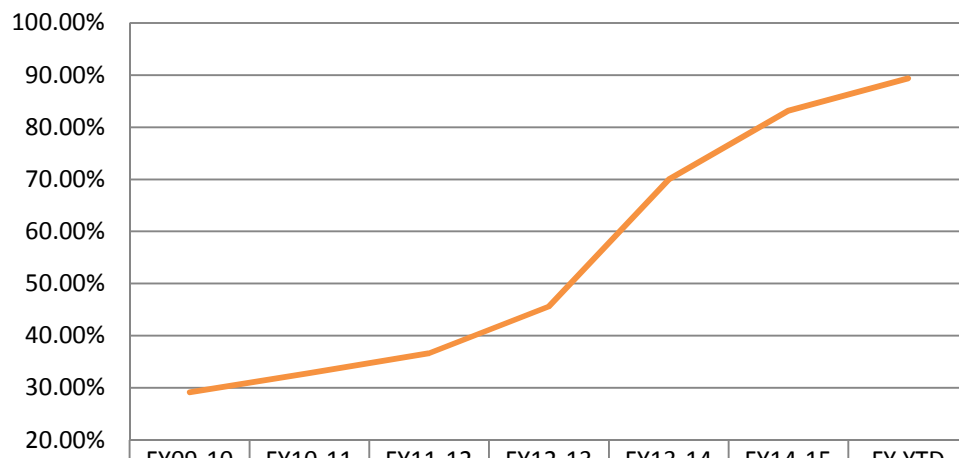



October 1st - March 31st

	FY14-15			FY15-16			Change
	DOG	CAT	TOTAL	DOG	CAT	TOTAL	
INTAKE							
Owner Surrender	933	487	1,420	863	553	1,416	-0.3%
Returns	149	32	181	168	36	204	12.7%
Stray Over the Counter	939	1,372	2,311	1,300	1,558	2,858	23.7%
Stray Impounded in Field	1,533	675	2,208	1,390	658	2,048	-7.2%
Confiscated/Investigations	238	19	257	124	18	142	-44.7%
Abandoned & Transferred In	128	1	129	65	0	65	-49.6%
Born in Shelter	20	9	29	3	1	4	-86.2%
LIVE INTAKE	3,940	2,595	6,535	3,913	2,824	6,737	3.1%
OUTCOME							
Adoption	2,244	1,225	3,469	2,265	1,417	3,682	6.1%
Returned to Owner	462	31	493	484	34	518	5.1%
Transfer HSTB	24	24	48	92	100	192	300.0%
Sent to Rescue	754	1,125	1,879	798	605	1,403	-25.3%
Community Cat Returns		365	365		390	390	6.8%
Total Live Outcome	3,484	2,770	6,254	3,639	2,546	6,185	-1.1%
Died in Custody, Foster, Offsite	33	121	154	20	36	56	-63.6%
Euthanasia	538	369	907	312	363	675	-25.6%
Lost/Missing/Unaccounted For	1	6	7	0	3	3	-57.1%
Non-Live Outcome	572	496	1,068	332	402	734	-31.3%
TOTAL OUTCOME	4,056	3,266	7,322	3,971	2,948	6,919	-5.5%
Total Live Out/Total Out	85.90%	84.81%	85.41%	91.64%	86.36%	89.39%	

<i>FY Totals (Current FY is YTD)</i>	FY09-10	FY10-11	FY11-12	FY12-13	FY13-14	FY14-15	FY YTD
Total Live Intake	22,807	20,118	20,099	21,493	16,893	14,778	6,737
Live Outcome	6,649	6,624	7,340	10,021	11,707	12,833	6,185
Non Live Outcome	16,155	13,528	12,691	11,960	5,017	2,600	734
Total Outcome	22,804	20,152	20,031	21,981	16,724	15,433	6,919
	FY09-10	FY10-11	FY11-12	FY12-13	FY13-14	FY14-15	FY YTD
Total Live Out/Total Out	29.16%	32.87%	36.64%	45.59%	70.00%	83.15%	89.39%

Total Live Out/Total Out (FY Overall)



	FY09-10	FY10-11	FY11-12	FY12-13	FY13-14	FY14-15	FY YTD
 Total Live Out/Total Out	29.16%	32.87%	36.64%	45.59%	70.00%	83.15%	89.39%

TNVR Program

	Released	Euthanasia
Oct-15	111	0
Nov-15	74	0
Dec-15	45	0
Jan-16	52	1
Feb-16	49	1
Mar-16	60	0
Apr-16		
May-16		
Jun-16		
Jul-16		
Aug-16		
Sep-16		
FY Totals	391	2

Affordable Sterilization Vouchers

	Redeemed	Issued
Oct-15	380	1,022
Nov-15	612	810
Dec-15	831	786
Jan-16	409	879
Feb-16	481	832
Mar-16	308	918
Apr-16		
May-16		
Jun-16		
Jul-16		
Aug-16		
Sep-16		
FY Totals	3,021	5,247

License Tag Sales

	FY12-13	FY13-14	FY14-15	FY15-16
October	\$205,414	\$173,625	\$144,685	\$116,482
November	\$150,956	\$118,822	\$108,896	\$130,315
December	\$173,121	\$170,381	\$149,347	\$162,215
January	\$172,037	\$154,744	\$135,602	\$96,636
February	\$173,243	\$177,535	\$149,452	\$129,493
March	\$224,642	\$187,225	\$189,842	\$145,417
April	\$196,376	\$194,021	\$149,040	
May	\$226,391	\$127,320	\$161,296	
June	\$189,423	\$182,830	\$175,953	
July	\$86,202	\$187,091	\$122,197	
August	\$279,751	\$171,748	\$69,040	
September	\$171,112	\$166,110	\$222,404	
FY Totals	\$2,248,668	\$2,011,452	\$1,777,754	\$780,558

* Current monthly figures are pre-verification with Clerk (may be adjusted)

Monthly Report: April 2016

Period Covered: April 1 through 30, 2016

INTAKE	DOG	CAT	TOTAL
Owner Surrender	165	120	285
Returns	25	5	30
Stray Over the Counter	247	342	589
Stray Impounded in Field	211	153	364
Confiscated/Investigations	21	1	22
Abandoned & Transferred In	14	0	14
Born in Shelter	0	4	4
LIVE INTAKE	683	625	1,308
OUTCOME	DOG	CAT	TOTAL
Adoption	390	191	581
Returned to Owner	83	9	92
Transfer HSTB	20	22	42
Sent to Rescue	123	185	308
Community Cat Returns		51	51
Total Live Outcome	616	458	1,074
Died in Custody/Transport	0	2	2
Died in Foster/Rescue	1	1	2
Died Offsite/Unspecified	0	1	1
Euthanasia	66	39	105
Euth: Neonatal/Too Young	0	47	47
Lost/Missing/Unaccounted For	0	0	0
Non-Live Outcome	67	90	157
TOTAL OUTCOME	683	548	1,231

Noteworthy Events:

"C" Kennels re-roofing complete
Starting work on "A" Kennel

	DOG	CAT	TOTAL
Total Live Out/Total Out	90.19%	83.58%	87.25%

	DOG	CAT	TOTAL
Shelter Population	210	116	326
Animals in Foster Care	35	135	170
Total Inventory	245	251	496

	DOG	CAT	TOTAL
Sterilizations Completed	320	202	522
Surgery other than S/N	17	1	18
Dental Procedures	0	0	0
Exams	1,484	1,178	2,662
Unique Animals (Exams)	739	642	1,381
Treatments	4,455	2,429	6,884
Unique Animals (Treatments)	726	560	1,286
Care & Cleaning	7,388	6,678	14,066
Average Length of Stay	10.2	10.6	in days

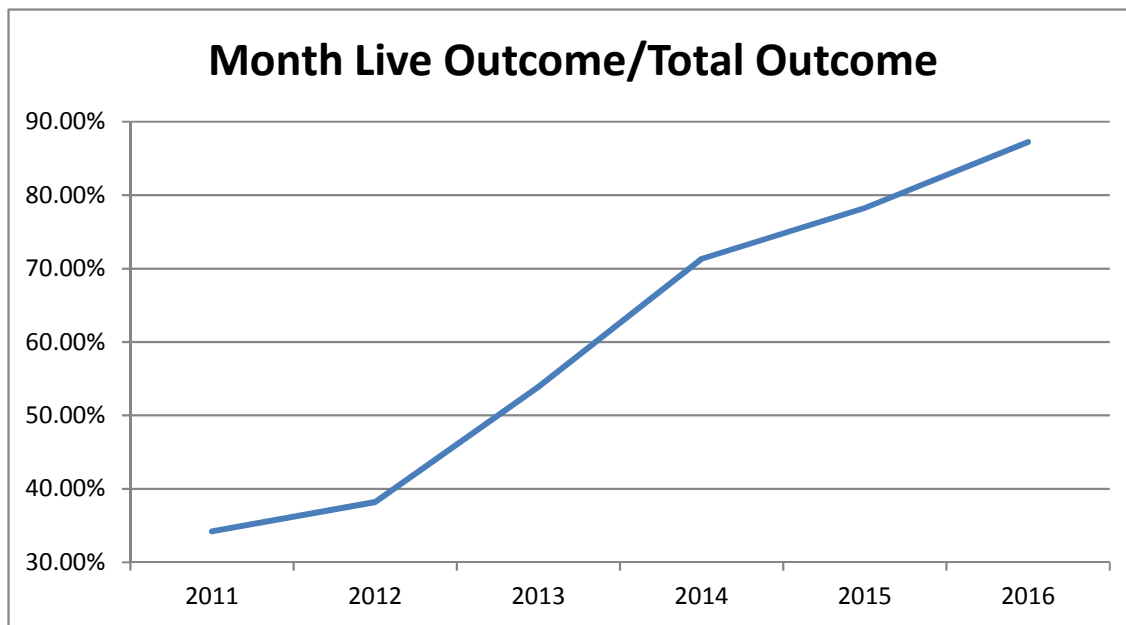
Heartworm Treatments	8
----------------------	---

RTO in Field	8
Bite Case	167
Cruelty/Neglect	230
Dangerous Dog	3
Enforcement	227
Seizure	5
Stray	632
Transport	3
	1,275

Canine Neuter	173
Canine Spay	147
Feline Neuter	85
Feline Spay	117
Sterilizations	522

Monthly Data

	Last Year			Current			Change
	DOG	CAT	TOTAL	DOG	CAT	TOTAL	
INTAKE							
Owner Surrender	194	134	328	165	120	285	-13.1%
Returns	17	2	19	25	5	30	57.9%
Stray Over the Counter	148	348	496	247	342	589	18.8%
Stray Impounded in Field	270	165	435	211	153	364	-16.3%
Confiscated/Investigations	15	26	41	21	1	22	-46.3%
Abandoned & Transferred In	21	0	21	14	0	14	-33.3%
Born in Shelter	0	0	0	0	4	4	100.0%
LIVE INTAKE	665	675	1,340	683	625	1,308	-2.4%
OUTCOME							
Adoption	360	141	501	390	191	581	16.0%
Returned to Owner	53	3	56	83	9	92	64.3%
Transfer to HSTB	0	0	0	20	22	42	100.0%
Sent to Rescue	103	117	220	123	185	308	40.0%
Community Cat Returns		51	51		51	51	0.0%
Total Live Outcome	516	312	828	616	458	1,074	29.7%
Died in Custody/Transport	2	14	16	1	4	5	-68.8%
Euthanasia	101	112	213	66	86	152	-28.6%
Lost/Missing/Unaccounted For	1	0	1	0	0	0	-100.0%
Non-Live Outcome	104	126	230	67	90	157	-31.7%
TOTAL OUTCOME	620	438	1,058	683	548	1,231	16.4%
Total Live Out/Total Out	83.23%	71.23%	78.26%	90.19%	83.58%	87.25%	
Monthly Comparisons	2011	2012	2013	2014	2015	2016	
Live Outcome/Total Outcome	34.22%	38.21%	53.90%	71.33%	78.26%	87.25%	

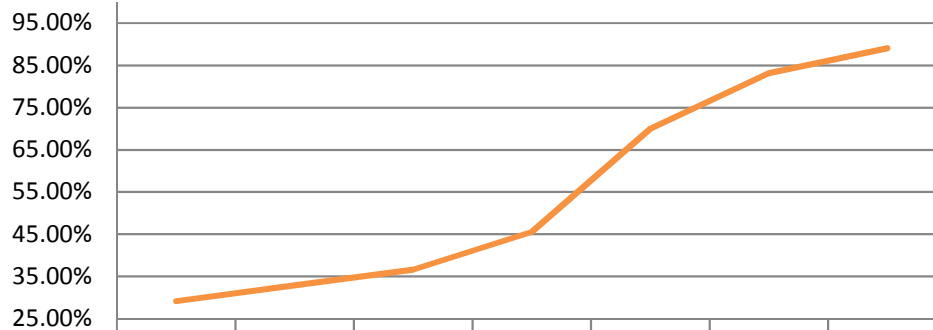


October 1st - April 30th

	FY14-15			FY15-16			Change
	DOG	CAT	TOTAL	DOG	CAT	TOTAL	
INTAKE							
Owner Surrender	1,127	621	1,748	1,028	673	1,701	-2.7%
Returns	167	34	201	193	41	234	16.4%
Stray Over the Counter	1087	1720	2,807	1,547	1,900	3,447	22.8%
Stray Impounded in Field	1,803	840	2,643	1,601	811	2,412	-8.7%
Confiscated/Investigations	253	45	298	145	19	164	-45.0%
Abandoned & Transferred In	149	1	150	79	0	79	-47.3%
Born in Shelter	20	9	29	3	5	8	-72.4%
LIVE INTAKE	4,606	3,270	7,876	4,596	3,449	8,045	2.1%
OUTCOME							
Adoption	2,604	1,366	3,970	2,655	1,608	4,263	7.4%
Returned to Owner	515	34	549	567	43	610	11.1%
Transfer HSTB	24	24	48	112	122	234	387.5%
Sent to Rescue	757	1,242	1,999	921	790	1,711	-14.4%
Community Cat Returns		416	416		441	441	6.0%
Total Live Outcome	3,900	3,082	6,982	4,255	3,004	7,259	4.0%
Died in Custody, Foster, Offsite	35	135	170	21	40	61	-64.1%
Euthanasia	639	481	1,120	378	449	827	-26.2%
Lost/Missing/Unaccounted For	2	6	8	0	3	3	-62.5%
Non-Live Outcome	676	622	1,298	399	492	891	-31.4%
TOTAL OUTCOME	4,576	3,704	8,280	4,654	3,496	8,150	-1.6%
Total Live Out/Total Out	85.23%	83.21%	84.32%	91.43%	85.93%	89.07%	

<i>FY Totals (Current FY is YTD)</i>	FY09-10	FY10-11	FY11-12	FY12-13	FY13-14	FY14-15	FY YTD
Total Live Intake	22,807	20,118	20,099	21,493	16,893	14,778	8,045
Live Outcome	6,649	6,624	7,340	10,021	11,707	12,833	7,259
Non Live Outcome	16,155	13,528	12,691	11,960	5,017	2,600	891
Total Outcome	22,804	20,152	20,031	21,981	16,724	15,433	8,150
	FY09-10	FY10-11	FY11-12	FY12-13	FY13-14	FY14-15	FY YTD
Total Live Out/Total Out	29.16%	32.87%	36.64%	45.59%	70.00%	83.15%	89.07%

Total Live Out/Total Out (FY Overall)



	FY09-10	FY10-11	FY11-12	FY12-13	FY13-14	FY14-15	FY YTD
Total Live Out/Total Out	29.16%	32.87%	36.64%	45.59%	70.00%	83.15%	89.07%

Affordable Sterilization Vouchers

	Redeemed	Issued
Oct-15	380	1,022
Nov-15	612	810
Dec-15	831	786
Jan-16	409	879
Feb-16	481	832
Mar-16	308	918
Apr-16	407	710
May-16		
Jun-16		
Jul-16		
Aug-16		
Sep-16		
FY Totals	3,428	5,957

License Tag Sales

	FY12-13	FY13-14	FY14-15	FY15-16
October	\$205,414	\$173,625	\$144,685	\$116,482
November	\$150,956	\$118,822	\$108,896	\$130,315
December	\$173,121	\$170,381	\$149,347	\$162,215
January	\$172,037	\$154,744	\$135,602	\$96,636
February	\$173,243	\$177,535	\$149,452	\$129,493
March	\$224,642	\$187,225	\$189,842	\$166,242
April	\$196,376	\$194,021	\$149,040	\$148,546
May	\$226,391	\$127,320	\$161,296	
June	\$189,423	\$182,830	\$175,953	
July	\$86,202	\$187,091	\$122,197	
August	\$279,751	\$171,748	\$69,040	
September	\$171,112	\$166,110	\$222,404	
FY Totals	\$2,248,668	\$2,011,452	\$1,777,754	\$949,929

* Current monthly figures are pre-verification with Clerk (may be adjusted)

Period Covered: May 1 through 31, 2016

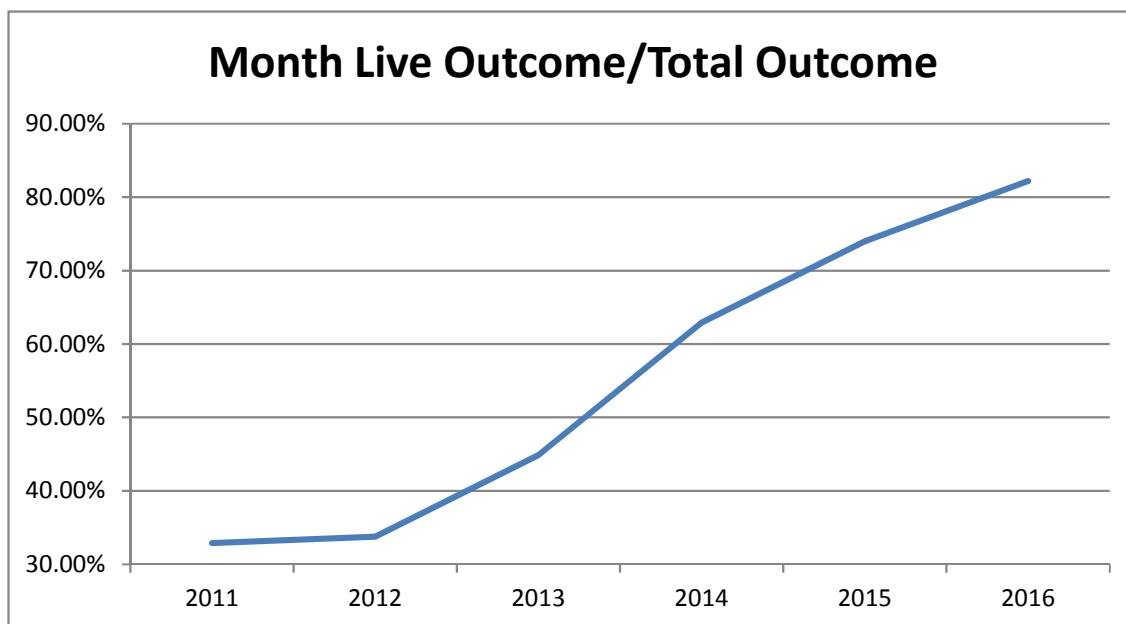
INTAKE	DOG	CAT	TOTAL
Owner Surrender	135	94	229
Returns (adopt + rescue)	30	7	37
Stray Over the Counter	204	425	629
Stray Impounded in Field	253	212	465
Confiscated/Investigations	27	11	38
Abandoned & Transferred In	3	0	3
Born in Shelter	0	0	0
LIVE INTAKE	652	749	1,401
OUTCOME	DOG	CAT	TOTAL
Adoption	292	179	471
Returned to Owner	88	7	95
Transfer HSTB	24	11	35
Sent to Rescue	116	193	309
Community Cat Returns		60	60
Total Live Outcome	520	450	970
Died in Custody/Transport	0	3	3
Died in Foster/Rescue	0	2	2
Died Offsite/Unspecified	0	0	0
Euthanasia	79	57	136
Euth: Neonatal/Too Young	0	67	67
Lost/Missing/Unaccounted For	0	2	2
Non-Live Outcome	79	131	210
TOTAL OUTCOME	599	581	1,180
	DOG	CAT	TOTAL
Total Live Out/Total Out	86.81%	77.45%	82.20%

FIELD OPERATIONS SUMMARY

RTO in Field	14
Educate/Resolve	434
Citation Issued	294
Warning Issued	70
Official Notice	419
Citizen Contacts	1,654
Stray Reports	855
Unable to locate/gone on arrival	413
	4,153

Monthly Data

	Last Year			Current			Change
	DOG	CAT	TOTAL	DOG	CAT	TOTAL	
INTAKE							
Owner Surrender	169	175	344	135	94	229	-33.4%
Returns (adopt + rescue)	27	2	29	30	7	37	27.6%
Stray Over the Counter	149	403	552	204	425	629	13.9%
Stray Impounded in Field	287	160	447	253	212	465	4.0%
Confiscated/Investigations	12	4	16	27	11	38	137.5%
Abandoned & Transferred In	11	0	11	3	0	3	-72.7%
Born in Shelter	0	0	0	0	0	0	0.0%
LIVE INTAKE	655	744	1,399	652	749	1,401	0.1%
OUTCOME							
Adoption	384	240	624	292	179	471	-24.5%
Returned to Owner	65	8	73	88	7	95	30.1%
Transfer to HSTB	15	0	15	24	11	35	133.3%
Sent to Rescue	65	124	189	116	193	309	63.5%
Community Cat Returns		46	46		60	60	30.4%
Total Live Outcome	529	418	947	520	450	970	2.4%
Died in Custody/Transport	6	19	25	0	5	5	-80.0%
Euthanasia	120	188	308	79	124	203	-34.1%
Lost/Missing/Unaccounted For	0	0	0	0	2	2	100.0%
Non-Live Outcome	126	207	333	79	131	210	-36.9%
TOTAL OUTCOME	655	625	1,280	599	581	1,180	-7.8%
Total Live Out/Total Out	80.76%	66.88%	73.98%	86.81%	77.45%	82.20%	
Monthly Comparisons	2011	2012	2013	2014	2015	2016	
Live Outcome/Total Outcome	32.87%	33.78%	44.87%	62.91%	73.98%	82.20%	

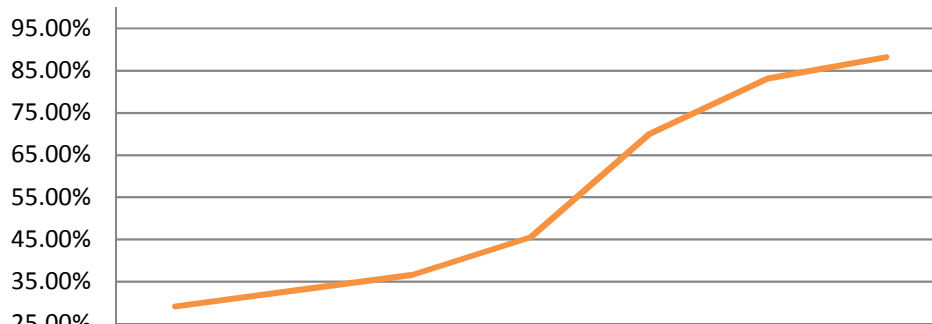


October 1st - May 31st

	FY14-15			FY15-16			Change
	DOG	CAT	TOTAL	DOG	CAT	TOTAL	
INTAKE							
Owner Surrender	1,296	796	2,092	1,163	767	1,930	-7.7%
Returns (adopt + rescue)	193	36	229	223	48	271	18.3%
Stray Over the Counter	1236	2123	3,359	1,751	2,325	4,076	21.3%
Stray Impounded in Field	2,090	1,000	3,090	1,854	1,023	2,877	-6.9%
Confiscated/Investigations	265	49	314	172	30	202	-35.7%
Abandoned & Transferred In	160	1	161	82	0	82	-49.1%
Born in Shelter	20	9	29	3	5	8	-72.4%
LIVE INTAKE	5,260	4,014	9,274	5,248	4,198	9,446	1.9%
OUTCOME							
Adoption	2,988	1,606	4,594	2,947	1,787	4,734	3.0%
Returned to Owner	580	42	622	655	50	705	13.3%
Sent to Rescue or Shelter	961	1,390	2,351	1,173	1,116	2,289	-2.6%
Community Cat Returns		462	462		501	501	8.4%
Total Live Outcome	4,529	3,500	8,029	4,775	3,454	8,229	2.5%
Died in Custody, Foster, Offsite	41	154	195	21	45	66	-66.2%
Euthanasia	759	669	1,428	457	573	1,030	-27.9%
Lost/Missing/Unaccounted For	2	6	8	0	5	5	-37.5%
Non-Live Outcome	802	829	1,631	478	623	1,101	-32.5%
TOTAL OUTCOME	5,331	4,329	9,660	5,253	4,077	9,330	-3.4%
Total Live Out/Total Out	84.96%	80.85%	83.12%	90.90%	84.72%	88.20%	

<i>FY Totals (Current FY is YTD)</i>	FY09-10	FY10-11	FY11-12	FY12-13	FY13-14	FY14-15	FY YTD
Total Live Intake	22,807	20,118	20,099	21,493	16,893	14,778	9,446
Live Outcome	6,649	6,624	7,340	10,021	11,707	12,833	8,229
Non Live Outcome	16,155	13,528	12,691	11,960	5,017	2,600	1,101
Total Outcome	22,804	20,152	20,031	21,981	16,724	15,433	9,330
	FY09-10	FY10-11	FY11-12	FY12-13	FY13-14	FY14-15	FY YTD
Total Live Out/Total Out	29.16%	32.87%	36.64%	45.59%	70.00%	83.15%	88.20%

Total Live Out/Total Out (FY Overall)



	FY09-10	FY10-11	FY11-12	FY12-13	FY13-14	FY14-15	FY YTD
Total Live Out/Total Out	29.16%	32.87%	36.64%	45.59%	70.00%	83.15%	88.20%

Affordable Sterilization Vouchers

	Redeemed	Issued
Oct-15	380	1,022
Nov-15	612	810
Dec-15	831	786
Jan-16	409	879
Feb-16	481	832
Mar-16	308	918
Apr-16	407	710
May-16	511	1,106
Jun-16		
Jul-16		
Aug-16		
Sep-16		
FY Totals	3,939	7,063

License Tag Sales

	FY12-13	FY13-14	FY14-15	FY15-16
October	\$205,414	\$173,625	\$144,685	\$116,482
November	\$150,956	\$118,822	\$108,896	\$130,315
December	\$173,121	\$170,381	\$149,347	\$162,215
January	\$172,037	\$154,744	\$135,602	\$96,636
February	\$173,243	\$177,535	\$149,452	\$129,493
March	\$224,642	\$187,225	\$189,842	\$166,242
April	\$196,376	\$194,021	\$149,040	\$148,546
May	\$226,391	\$127,320	\$161,296	\$168,534
June	\$189,423	\$182,830	\$175,953	
July	\$86,202	\$187,091	\$122,197	
August	\$279,751	\$171,748	\$69,040	
September	\$171,112	\$166,110	\$222,404	
FY Totals	\$2,248,668	\$2,011,452	\$1,777,754	\$1,118,463

* Current monthly figures are pre-verification with Clerk (may be adjusted)

Period Covered: June 1 through 30, 2016

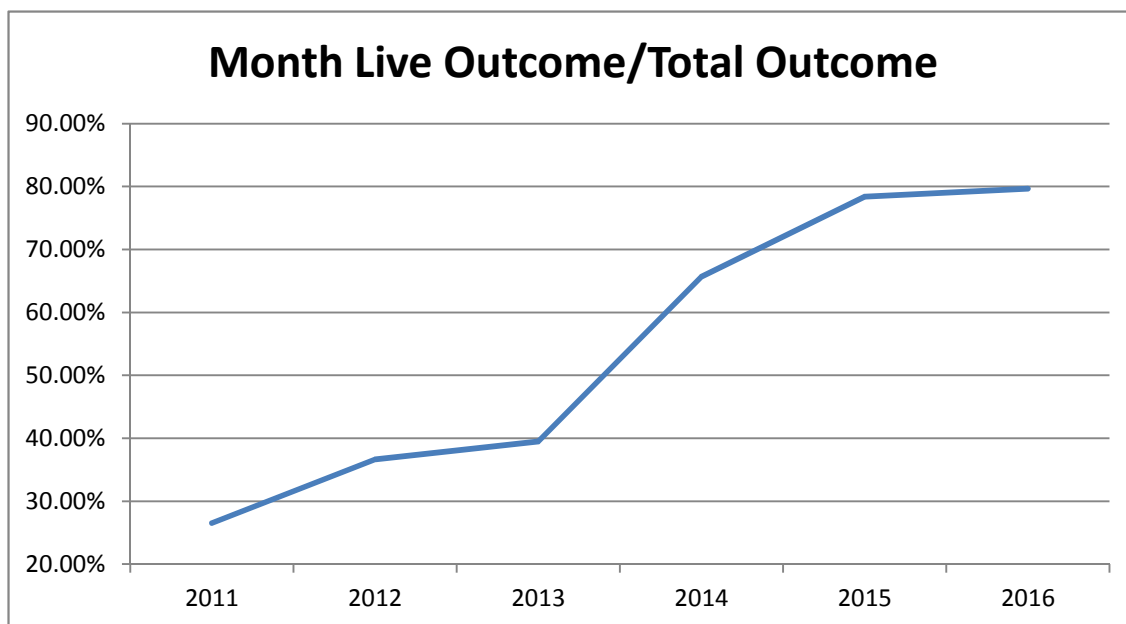
INTAKE	DOG	CAT	TOTAL
Owner Surrender	152	108	260
Returns (adopt + rescue)	33	12	45
Stray Over the Counter	221	517	738
Stray Impounded in Field	300	222	522
Confiscated/Investigations	10	75	85
Abandoned & Transferred In	8	0	8
Born in Shelter	0	0	0
LIVE INTAKE	724	934	1,658
OUTCOME	DOG	CAT	TOTAL
Adoption	394	324	718
Returned to Owner	69	7	76
Transfer HSTB	78	15	93
Sent to Rescue	86	168	254
Community Cat Returns		100	100
Total Live Outcome	627	614	1,241
Died in Custody/Transport	2	4	6
Died in Foster/Rescue	0	6	6
Died Offsite/Unspecified	0	2	2
Euthanasia	75	199	274
Euth: Neonatal/Too Young	0	27	27
Lost/Missing/Unaccounted For	1	1	2
Non-Live Outcome	78	239	317
TOTAL OUTCOME	705	853	1,558

	DOG	CAT	TOTAL
Total Live Out/Total Out	88.94%	71.98%	79.65%

FIELD OPERATIONS SUMMARY	2016	2011	2006
RTO in Field	11	11	5
Educate/Resolve	437	118	49
Citation Issued	191	428	373
Warning Issued	78	51	28
Official Notice	316	382	192
Citizen Contacts	1,403	1,462	504
Stray Reports	1,220	1,358	1,664
Unable to locate/gone on arrival	249	232	60
	3,905	4,042	2,875
Employees	18	22	26
Average per Employee In-Person	135	111	44
Educate, Cite, Warn, and Notice	1,022	979	642

Monthly Data

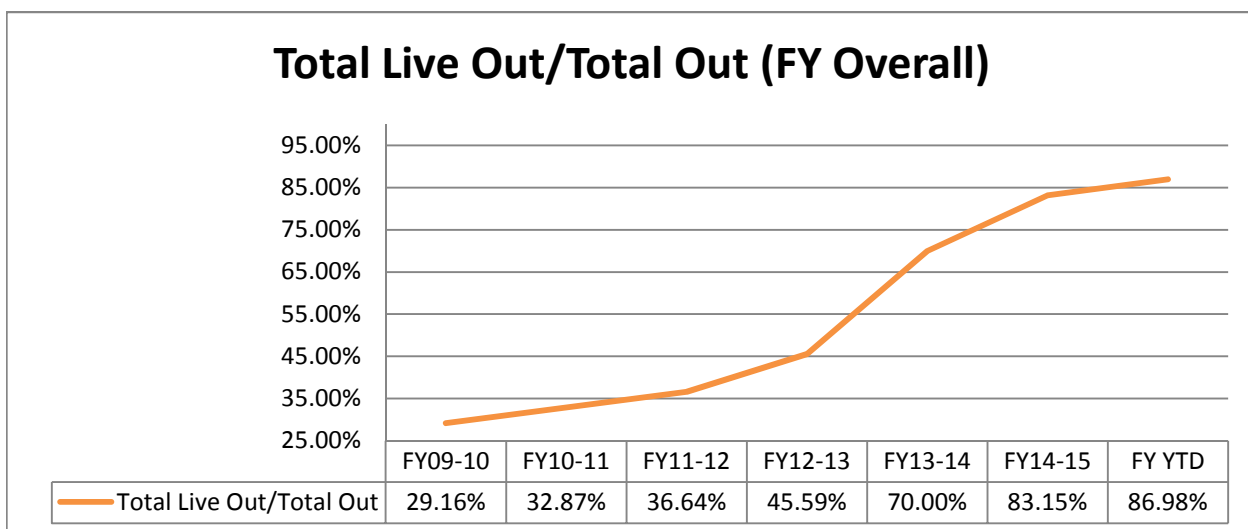
	Last Year			Current			Change
	DOG	CAT	TOTAL	DOG	CAT	TOTAL	
INTAKE							
Owner Surrender	207	90	297	152	108	260	-12.5%
Returns (adopt + rescue)	23	6	29	33	12	45	55.2%
Stray Over the Counter	227	454	681	221	517	738	8.4%
Stray Impounded in Field	248	157	405	300	222	522	28.9%
Confiscated/Investigations	9	1	10	10	75	85	750.0%
Abandoned & Transferred In	15	0	15	8	0	8	-46.7%
Born in Shelter	0	4	4	0	0	0	-100.0%
LIVE INTAKE	729	712	1,441	724	934	1,658	15.1%
OUTCOME							
Adoption	424	334	758	394	324	718	-5.3%
Returned to Owner	70	10	80	69	7	76	-5.0%
Transfer to HSTB	16	23	39	78	15	93	138.5%
Sent to Rescue	79	174	253	86	168	254	0.4%
Community Cat Returns		46	46		100	100	117.4%
Total Live Outcome	589	587	1,176	627	614	1,241	5.5%
Died in Custody/Transport	3	27	30	2	12	14	-53.3%
Euthanasia	137	157	294	75	226	301	2.4%
Lost/Missing/Unaccounted For	0	0	0	1	1	2	100.0%
Non-Live Outcome	140	184	324	78	239	317	-2.2%
TOTAL OUTCOME	729	771	1,500	705	853	1,558	3.9%
Total Live Out/Total Out	80.80%	76.13%	78.40%	88.94%	71.98%	79.65%	
Monthly Comparisons	2011	2012	2013	2014	2015	2016	
Live Outcome/Total Outcome	26.52%	36.64%	39.50%	65.70%	78.40%	79.65%	



October 1st - June 30th

	FY14-15			FY15-16			Change
	DOG	CAT	TOTAL	DOG	CAT	TOTAL	
INTAKE							
Owner Surrender	1,503	886	2,389	1,315	875	2,190	-8.3%
Returns (adopt + rescue)	216	42	258	256	60	316	22.5%
Stray Over the Counter	1463	2577	4,040	1,972	2,842	4,814	19.2%
Stray Impounded in Field	2,338	1,157	3,495	2,154	1,245	3,399	-2.7%
Confiscated/Investigations	274	50	324	182	105	287	-11.4%
Abandoned & Transferred In	175	1	176	90	0	90	-48.9%
Born in Shelter	20	13	33	3	5	8	-75.8%
LIVE INTAKE	5,989	4,726	10,715	5,972	5,132	11,104	3.6%
OUTCOME							
Adoption	3,412	1,940	5,352	3,341	2,111	5,452	1.9%
Returned to Owner	650	52	702	724	57	781	11.3%
Sent to Rescue or Shelter	1,056	1,587	2,643	1,337	1,299	2,636	-0.3%
Community Cat Returns		508	508		601	601	18.3%
Total Live Outcome	5,118	4,087	9,205	5,402	4,068	9,470	2.9%
Died in Custody, Foster, Offsite	44	181	225	23	57	80	-64.4%
Euthanasia	896	826	1,722	532	799	1,331	-22.7%
Lost/Missing/Unaccounted For	2	6	8	1	6	7	-12.5%
Non-Live Outcome	942	1,013	1,955	556	862	1,418	-27.5%
TOTAL OUTCOME	6,060	5,100	11,160	5,958	4,930	10,888	-2.4%
Total Live Out/Total Out	84.46%	80.14%	82.48%	90.67%	82.52%	86.98%	

<i>FY Totals (Current FY is YTD)</i>	FY09-10	FY10-11	FY11-12	FY12-13	FY13-14	FY14-15	FY YTD
Total Live Intake	22,807	20,118	20,099	21,493	16,893	14,778	11,104
Live Outcome	6,649	6,624	7,340	10,021	11,707	12,833	9,470
Non Live Outcome	16,155	13,528	12,691	11,960	5,017	2,600	1,418
Total Outcome	22,804	20,152	20,031	21,981	16,724	15,433	10,888
	FY09-10	FY10-11	FY11-12	FY12-13	FY13-14	FY14-15	FY YTD
Total Live Out/Total Out	29.16%	32.87%	36.64%	45.59%	70.00%	83.15%	86.98%



Affordable Sterilization Vouchers

	Redeemed	Issued
Oct-15	380	1,022
Nov-15	612	810
Dec-15	831	786
Jan-16	409	879
Feb-16	481	832
Mar-16	308	918
Apr-16	407	710
May-16	511	1,106
Jun-16	690	1,083
Jul-16		
Aug-16		
Sep-16		
FY Totals	4,629	8,146

License Tag Sales

	FY12-13	FY13-14	FY14-15	FY15-16
October	\$205,414	\$173,625	\$144,685	\$116,482
November	\$150,956	\$118,822	\$108,896	\$130,315
December	\$173,121	\$170,381	\$149,347	\$162,215
January	\$172,037	\$154,744	\$135,602	\$96,636
February	\$173,243	\$177,535	\$149,452	\$129,493
March	\$224,642	\$187,225	\$189,842	\$166,242
April	\$196,376	\$194,021	\$149,040	\$148,546
May	\$226,391	\$127,320	\$161,296	\$168,534
June	\$189,423	\$182,830	\$175,953	\$137,223
July	\$86,202	\$187,091	\$122,197	
August	\$279,751	\$171,748	\$69,040	
September	\$171,112	\$166,110	\$222,404	
FY Totals	\$2,248,668	\$2,011,452	\$1,777,754	\$1,255,686

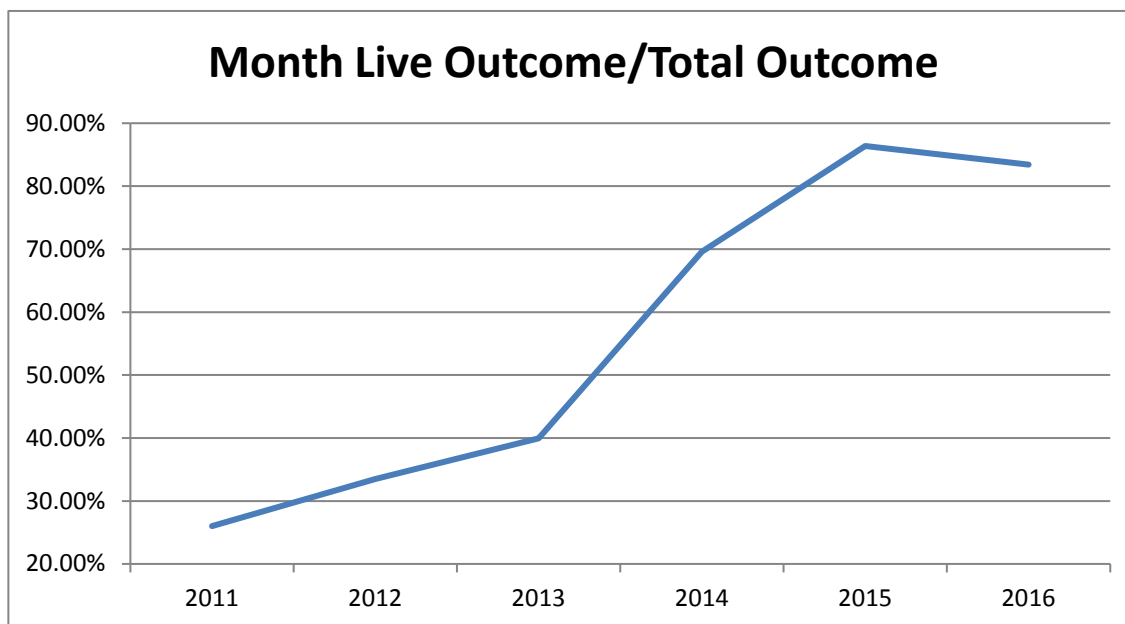
* Current monthly figures are pre-verification with Clerk (may be adjusted)

Period Covered: July 1 through 31, 2016

INTAKE	DOG	CAT	TOTAL
Owner Surrender	185	103	288
Returns (adopt + rescue)	48	14	62
Stray Over the Counter	266	380	646
Stray Impounded in Field	287	206	493
Confiscated/Investigations	19	9	28
Abandoned & Transferred In	3	2	5
Born in Shelter	0	0	0
LIVE INTAKE	808	714	1,522
OUTCOME	DOG	CAT	TOTAL
Adoption	476	276	752
Returned to Owner	109	2	111
Transfer HSTB	58	16	74
Sent to Rescue	65	156	221
Community Cat Returns		88	88
Total Live Outcome	708	538	1,246
Died in Custody/Transport	2	5	7
Died in Foster/Rescue	0	8	8
Died Offsite/Unspecified	0	1	1
Euthanasia	91	118	209
Euth: Neonatal/Too Young	0	22	22
Lost/Missing/Unaccounted For	1	0	1
Non-Live Outcome	94	154	248
TOTAL OUTCOME	802	692	1,494
	DOG	CAT	TOTAL
Total Live Out/Total Out	88.28%	77.75%	83.40%

Monthly Data

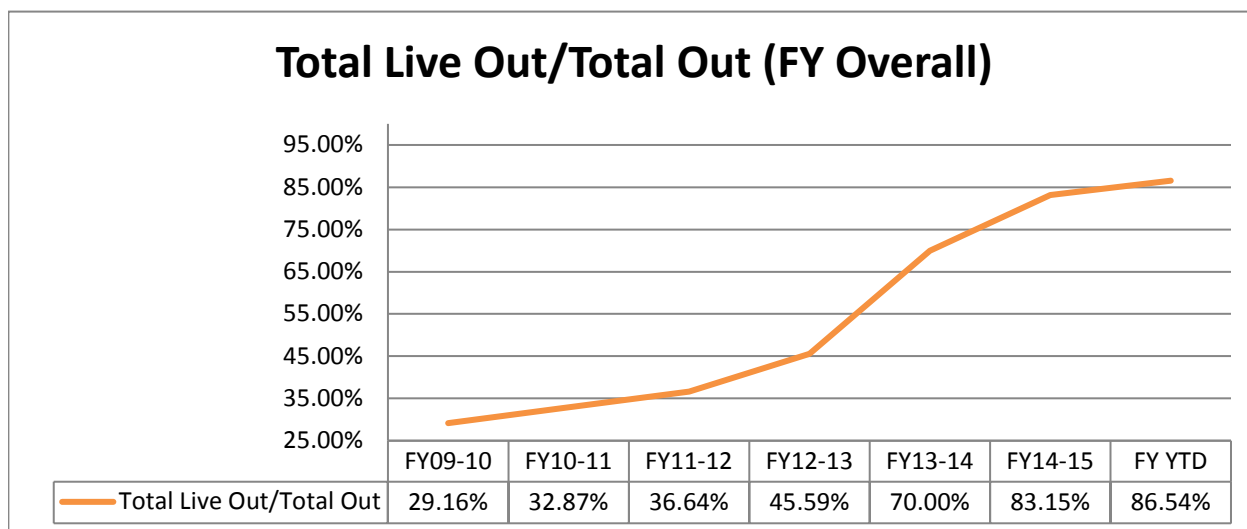
	Last Year			Current			Change
	DOG	CAT	TOTAL	DOG	CAT	TOTAL	
INTAKE							
Owner Surrender	182	127	309	185	103	288	-6.8%
Returns (adopt + rescue)	21	10	31	48	14	62	100.0%
Stray Over the Counter	232	335	567	266	380	646	13.9%
Stray Impounded in Field	292	159	451	287	206	493	9.3%
Confiscated/Investigations	16	1	17	19	9	28	64.7%
Abandoned & Transferred In	17	0	17	3	2	5	-70.6%
Born in Shelter	0	2	2	0	0	0	-100.0%
LIVE INTAKE	760	634	1,394	808	714	1,522	9.2%
OUTCOME							
Adoption	437	357	794	476	276	752	-5.3%
Returned to Owner	94	4	98	109	2	111	13.3%
Transfer to HSTB	3	0	3	58	16	74	2366.7%
Sent to Rescue	112	138	250	65	156	221	-11.6%
Community Cat Returns		60	60		88	88	46.7%
Total Live Outcome	646	559	1,205	708	538	1,246	3.4%
Died in Custody/Transport	3	12	15	2	14	16	6.7%
Euthanasia	70	105	175	91	140	231	32.0%
Lost/Missing/Unaccounted For	0	0	0	1	0	1	100.0%
Non-Live Outcome	73	117	190	94	154	248	30.5%
TOTAL OUTCOME	719	676	1,395	802	692	1,494	7.1%
Total Live Out/Total Out	89.85%	82.69%	86.38%	88.28%	77.75%	83.40%	
Monthly Comparisons	2011	2012	2013	2014	2015	2016	
Live Outcome/Total Outcome	26.01%	33.49%	39.97%	69.60%	86.38%	83.40%	



October 1st - July 31st

	FY14-15			FY15-16			Change
	DOG	CAT	TOTAL	DOG	CAT	TOTAL	
INTAKE							
Owner Surrender	1,685	1,013	2,698	1,500	978	2,478	-8.2%
Returns (adopt + rescue)	237	52	289	304	74	378	30.8%
Stray Over the Counter	1,695	2,912	4,607	2,238	3,222	5,460	18.5%
Stray Impounded in Field	2,630	1,316	3,946	2,441	1,451	3,892	-1.4%
Confiscated/Investigations	290	51	341	201	114	315	-7.6%
Abandoned & Transferred In	192	1	193	93	2	95	-50.8%
Born in Shelter	20	15	35	3	5	8	-77.1%
LIVE INTAKE	6,749	5,360	12,109	6,780	5,846	12,626	4.3%
OUTCOME							
Adoption	3,849	2,297	6,146	3,817	2,387	6,204	0.9%
Returned to Owner	744	56	800	833	59	892	11.5%
Sent to Rescue or Shelter	1,171	1,725	2,896	1,460	1,471	2,931	1.2%
Community Cat Returns		568	568		689	689	21.3%
Total Live Outcome	5,764	4,646	10,410	6,110	4,606	10,716	2.9%
Died in Custody, Foster, Offsite	47	193	240	25	71	96	-60.0%
Euthanasia	966	931	1,897	623	939	1,562	-17.7%
Lost/Missing/Unaccounted For	2	6	8	2	6	8	0.0%
Non-Live Outcome	1,015	1,130	2,145	650	1,016	1,666	-22.3%
TOTAL OUTCOME	6,779	5,776	12,555	6,760	5,622	12,382	-1.4%
Total Live Out/Total Out	85.03%	80.44%	82.92%	90.38%	81.93%	86.54%	

<i>FY Totals (Current FY is YTD)</i>	FY09-10	FY10-11	FY11-12	FY12-13	FY13-14	FY14-15	FY YTD
Total Live Intake	22,807	20,118	20,099	21,493	16,893	14,778	12,626
Live Outcome	6,649	6,624	7,340	10,021	11,707	12,833	10,716
Non Live Outcome	16,155	13,528	12,691	11,960	5,017	2,600	1,666
Total Outcome	22,804	20,152	20,031	21,981	16,724	15,433	12,382
	FY09-10	FY10-11	FY11-12	FY12-13	FY13-14	FY14-15	FY YTD
Total Live Out/Total Out	29.16%	32.87%	36.64%	45.59%	70.00%	83.15%	86.54%



Affordable Sterilization Vouchers

	Redeemed	Issued
Oct-15	380	1,022
Nov-15	612	810
Dec-15	831	786
Jan-16	409	879
Feb-16	481	832
Mar-16	308	918
Apr-16	407	710
May-16	511	1,106
Jun-16	690	1,083
Jul-16	336	835
Aug-16		
Sep-16		
FY Totals	4,965	8,981

License Tag Sales

	FY12-13	FY13-14	FY14-15	FY15-16
October	\$205,414	\$173,625	\$144,685	\$116,482
November	\$150,956	\$118,822	\$108,896	\$130,315
December	\$173,121	\$170,381	\$149,347	\$162,215
January	\$172,037	\$154,744	\$135,602	\$96,636
February	\$173,243	\$177,535	\$149,452	\$129,493
March	\$224,642	\$187,225	\$189,842	\$166,242
April	\$196,376	\$194,021	\$149,040	\$148,546
May	\$226,391	\$127,320	\$161,296	\$168,534
June	\$189,423	\$182,830	\$175,953	\$137,223
July	\$86,202	\$187,091	\$122,197	\$116,319
August	\$279,751	\$171,748	\$69,040	
September	\$171,112	\$166,110	\$222,404	
FY Totals	\$2,248,668	\$2,011,452	\$1,777,754	\$1,372,005

* Current monthly figures are pre-verification with Clerk (may be adjusted)

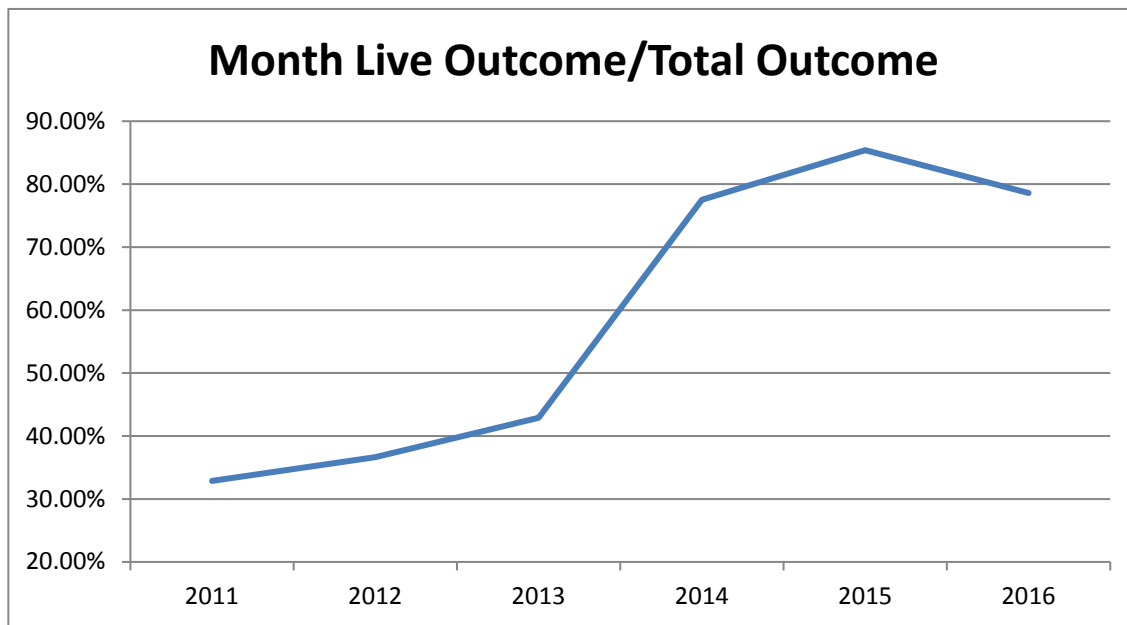
Monthly Report: August 2016

Period Covered: August 1 through 31, 2016

INTAKE	DOG	CAT	TOTAL
Owner Surrender	172	156	328
Returns (adopt + rescue)	37	7	44
Stray Over the Counter	287	465	752
Stray Impounded in Field	279	189	468
Confiscated/Investigations	25	9	34
Abandoned & Transferred In	1	0	1
Born in Shelter	0	0	0
LIVE INTAKE	801	826	1,627
OUTCOME	DOG	CAT	TOTAL
Adoption	416	251	667
Returned to Owner	126	8	134
Transfer HSTB	59	30	89
Sent to Rescue	72	207	279
Community Cat Returns		56	56
Total Live Outcome	673	552	1,225
Died in Custody/Transport	2	1	3
Died in Foster/Rescue	0	19	19
Died Offsite/Unspecified	0	0	0
Euthanasia	141	151	292
Euth: Neonatal/Too Young	0	20	20
Lost/Missing/Unaccounted For	0	0	0
Non-Live Outcome	143	191	334
TOTAL OUTCOME	816	743	1,559
	DOG	CAT	TOTAL
Total Live Out/Total Out	82.48%	74.29%	78.58%

Monthly Data

	Last Year			Current			Change
	DOG	CAT	TOTAL	DOG	CAT	TOTAL	
INTAKE							
Owner Surrender	167	115	282	172	156	328	16.3%
Returns (adopt + rescue)	25	10	35	37	7	44	25.7%
Stray Over the Counter	254	320	574	287	465	752	31.0%
Stray Impounded in Field	311	143	454	279	189	468	3.1%
Confiscated/Investigations	17	6	23	25	9	34	47.8%
Abandoned & Transferred In	12	0	12	1	0	1	-91.7%
Born in Shelter	0	8	8	0	0	0	-100.0%
LIVE INTAKE	786	602	1,388	801	826	1,627	17.2%
OUTCOME							
Adoption	481	373	854	416	251	667	-21.9%
Returned to Owner	82	8	90	126	8	134	48.9%
Transfer to HSTB	26	4	30	59	30	89	196.7%
Sent to Rescue	137	149	286	72	207	279	-2.4%
Community Cat Returns		68	68		56	56	-17.6%
Total Live Outcome	726	602	1,328	673	552	1,225	-7.8%
Died in Custody/Transport	8	13	21	2	20	22	4.8%
Euthanasia	115	91	206	141	171	312	51.5%
Lost/Missing/Unaccounted For	0	0	0	0	0	0	0.0%
Non-Live Outcome	123	104	227	143	191	334	47.1%
TOTAL OUTCOME	849	706	1,555	816	743	1,559	0.3%
Total Live Out/Total Out	85.51%	85.27%	85.40%	82.48%	74.29%	78.58%	
Monthly Comparisons	2011	2012	2013	2014	2015	2016	
Live Outcome/Total Outcome	32.87%	36.64%	42.88%	77.53%	85.40%	78.58%	

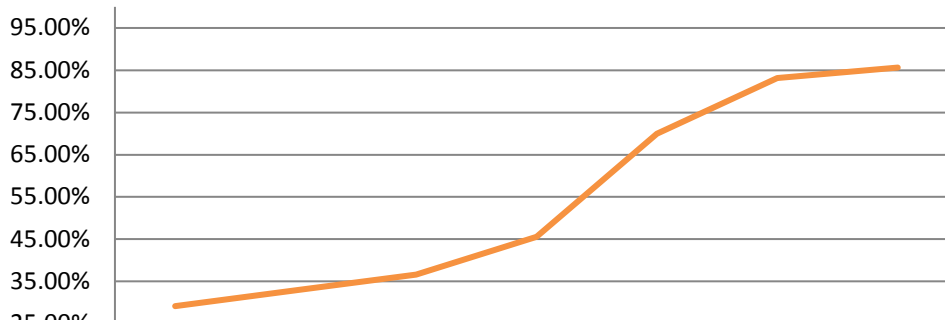


October 1st - August 31st

	FY14-15			FY15-16			Change
	DOG	CAT	TOTAL	DOG	CAT	TOTAL	
INTAKE							
Owner Surrender	1,841	1,128	2,969	1,672	1,134	2,806	-5.5%
Returns (adopt + rescue)	263	62	325	341	81	422	29.8%
Stray Over the Counter	1,949	3,232	5,181	2,526	3,687	6,213	19.9%
Stray Impounded in Field	2,941	1,459	4,400	2,719	1,640	4,359	-0.9%
Confiscated/Investigations	307	57	364	227	123	350	-3.8%
Abandoned & Transferred In	204	1	205	92	2	94	-54.1%
Born in Shelter	20	23	43	3	5	8	-81.4%
LIVE INTAKE	7,525	5,962	13,487	7,580	6,672	14,252	5.7%
OUTCOME							
Adoption	4,330	2,670	7,000	4,233	2,639	6,872	-1.8%
Returned to Owner	826	64	890	958	68	1,026	15.3%
Sent to Rescue or Shelter	1,334	1,878	3,212	1,568	1,690	3,258	1.4%
Community Cat Returns		636	636		764	764	20.1%
Total Live Outcome	6,490	5,248	11,738	6,759	5,161	11,920	1.6%
Died in Custody, Foster, Offsite	55	206	261	27	92	119	-54.4%
Euthanasia	1,081	1,022	2,103	763	1,110	1,873	-10.9%
Lost/Missing/Unaccounted For	2	6	8	2	7	9	12.5%
Non-Live Outcome	1,138	1,234	2,372	792	1,209	2,001	-15.6%
TOTAL OUTCOME	7,628	6,482	14,110	7,551	6,370	13,921	-1.3%
Total Live Out/Total Out	85.08%	80.96%	83.19%	89.51%	81.02%	85.63%	

<i>FY Totals (Current FY is YTD)</i>	FY09-10	FY10-11	FY11-12	FY12-13	FY13-14	FY14-15	FY YTD
Total Live Intake	22,807	20,118	20,099	21,493	16,893	14,778	14,252
Live Outcome	6,649	6,624	7,340	10,021	11,707	12,833	11,920
Non Live Outcome	16,155	13,528	12,691	11,960	5,017	2,600	2,001
Total Outcome	22,804	20,152	20,031	21,981	16,724	15,433	13,921
	FY09-10	FY10-11	FY11-12	FY12-13	FY13-14	FY14-15	FY YTD
Total Live Out/Total Out	29.16%	32.87%	36.64%	45.59%	70.00%	83.15%	85.63%

Total Live Out/Total Out (FY Overall)



	FY09-10	FY10-11	FY11-12	FY12-13	FY13-14	FY14-15	FY YTD
Total Live Out/Total Out	29.16%	32.87%	36.64%	45.59%	70.00%	83.15%	85.63%

Affordable Sterilization Vouchers

	Redeemed	Issued
Oct-15	380	1,022
Nov-15	612	810
Dec-15	831	786
Jan-16	409	879
Feb-16	481	832
Mar-16	308	918
Apr-16	407	710
May-16	511	1,106
Jun-16	690	1,083
Jul-16	336	835
Aug-16	490	873
Sep-16		
FY Totals	5,455	9,854

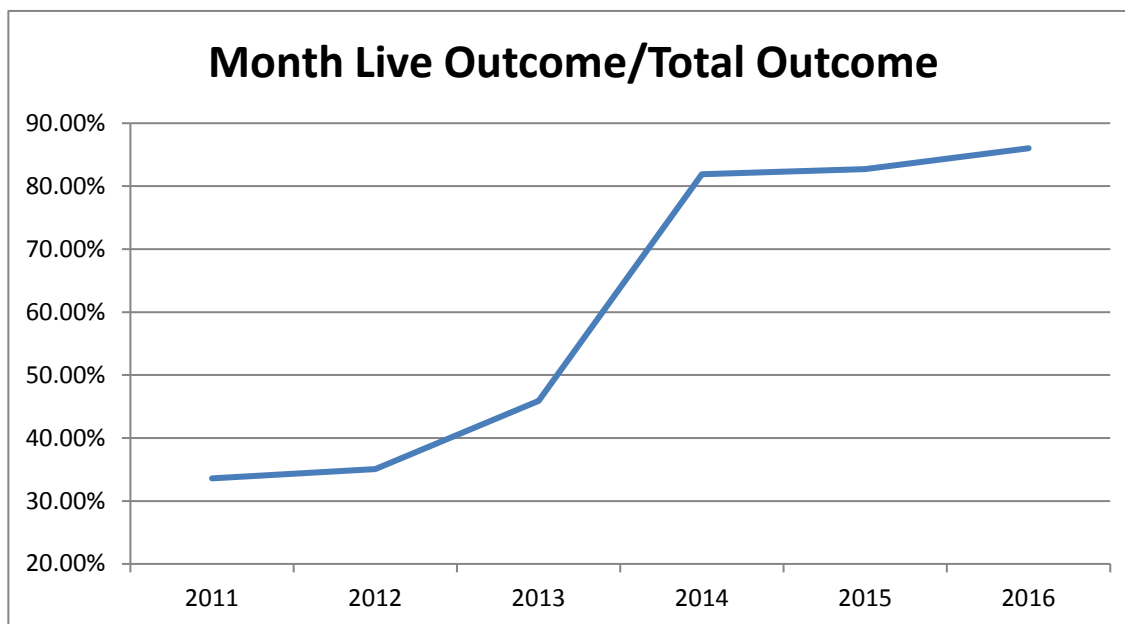
License Tag Sales

	FY12-13	FY13-14	FY14-15	FY15-16
October	\$205,414	\$173,625	\$144,685	\$116,482
November	\$150,956	\$118,822	\$108,896	\$130,315
December	\$173,121	\$170,381	\$149,347	\$162,215
January	\$172,037	\$154,744	\$135,602	\$96,636
February	\$173,243	\$177,535	\$149,452	\$129,493
March	\$224,642	\$187,225	\$189,842	\$166,242
April	\$196,376	\$194,021	\$149,040	\$148,546
May	\$226,391	\$127,320	\$161,296	\$168,534
June	\$189,423	\$182,830	\$175,953	\$137,223
July	\$86,202	\$187,091	\$122,197	\$118,009
August	\$279,751	\$171,748	\$69,040	\$161,585
September	\$171,112	\$166,110	\$222,404	
FY Totals	\$2,248,668	\$2,011,452	\$1,777,754	\$1,535,280

* Current monthly figures are pre-verification with Clerk (may be adjusted)

Monthly Data

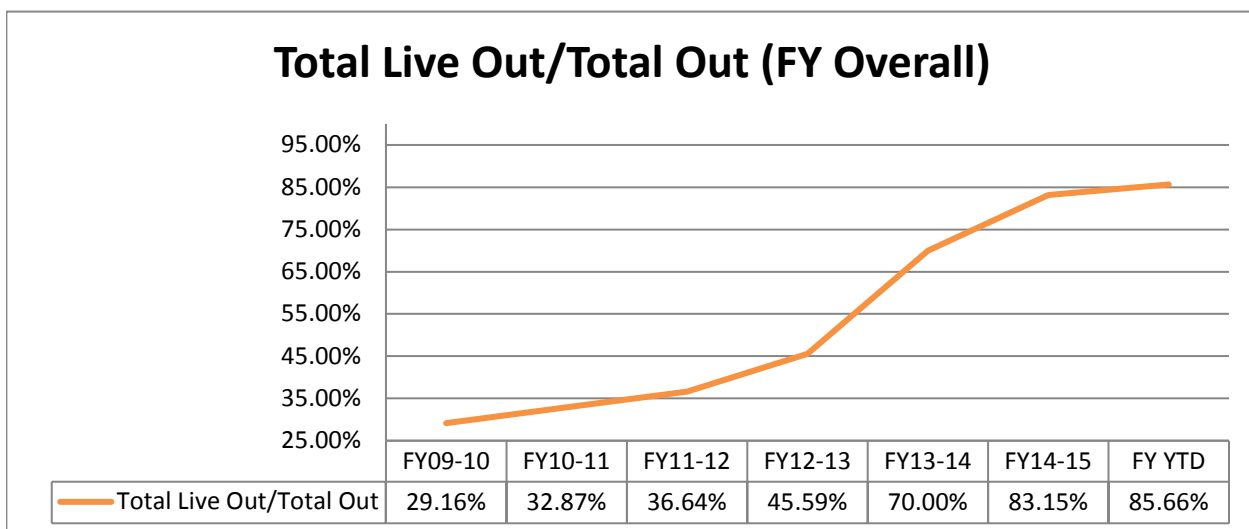
	Last Year			Current			Change
	DOG	CAT	TOTAL	DOG	CAT	TOTAL	
INTAKE							
Owner Surrender	143	120	263	153	71	224	-14.8%
Returns (adopt + rescue)	25	5	30	28	12	40	33.3%
Stray Over the Counter	196	323	519	235	403	638	22.9%
Stray Impounded in Field	302	129	431	235	206	441	2.3%
Confiscated/Investigations	25	0	25	21	2	23	-8.0%
Abandoned & Transferred In	13	0	13	0	2	2	-84.6%
Born in Shelter	1	7	8	0	0	0	-100.0%
LIVE INTAKE	705	584	1,289	672	696	1,368	6.1%
OUTCOME							
Adoption	420	272	692	434	260	694	0.3%
Returned to Owner	91	1	92	76	10	86	-6.5%
Transfer to HSTB	2	42	44	90	19	109	147.7%
Sent to Rescue	96	113	209	9	14	23	-89.0%
Community Cat Returns		58	58		85	85	46.6%
Total Live Outcome	609	486	1,095	609	388	997	-8.9%
Died in Custody/Transport	4	25	29	0	16	16	-44.8%
Euthanasia	82	118	200	51	94	145	-27.5%
Lost/Missing/Unaccounted For	0	0	0	0	1	1	*
Non-Live Outcome	86	143	229	51	111	162	-29.3%
TOTAL OUTCOME	695	629	1,324	660	499	1,159	-12.5%
Total Live Out/Total Out	87.63%	77.27%	82.70%	92.27%	77.76%	86.02%	
Monthly Comparisons	2011	2012	2013	2014	2015	2016	
Live Outcome/Total Outcome	33.59%	35.07%	45.90%	81.90%	82.70%	86.02%	



October 1st - September 30th

	FY14-15			FY15-16			Change
	DOG	CAT	TOTAL	DOG	CAT	TOTAL	
INTAKE							
Owner Surrender	1,995	1,248	3,243	1,825	1,205	3,030	-6.6%
Returns (adopt + rescue)	287	67	354	369	93	462	30.5%
Stray Over the Counter	2,145	3,547	5,692	2,761	4,090	6,851	20.4%
Stray Impounded in Field	3,243	1,588	4,831	2,954	1,846	4,800	-0.6%
Confiscated/Investigations	332	57	389	248	125	373	-4.1%
Abandoned & Transferred In	217	1	218	92	4	96	-56.0%
Born in Shelter	21	30	51	3	5	8	-84.3%
LIVE INTAKE	8,240	6,538	14,778	8,252	7,368	15,620	5.7%
OUTCOME							
Adoption	4,750	2,942	7,692	4,667	2,899	7,566	-1.6%
Returned to Owner	917	65	982	1,034	78	1,112	13.2%
Sent to Rescue or Shelter	1,432	2,033	3,465	1,667	1,723	3,390	-2.2%
Community Cat Returns		694	694		849	849	22.3%
Total Live Outcome	7,099	5,734	12,833	7,368	5,549	12,917	0.7%
Died in Custody, Foster, Offsite	59	231	290	27	108	135	-53.4%
Euthanasia	1,162	1,140	2,302	814	1,204	2,018	-12.3%
Lost/Missing/Unaccounted For	2	6	8	2	8	10	25.0%
Non-Live Outcome	1,223	1,377	2,600	843	1,320	2,163	-16.8%
TOTAL OUTCOME	8,322	7,111	15,433	8,211	6,869	15,080	-2.3%
Total Live Out/Total Out	85.30%	80.64%	83.15%	89.73%	80.78%	85.66%	

<i>FY Totals (Current FY is YTD)</i>	FY09-10	FY10-11	FY11-12	FY12-13	FY13-14	FY14-15	FY YTD
Total Live Intake	22,807	20,118	20,099	21,493	16,893	14,778	15,620
Live Outcome	6,649	6,624	7,340	10,021	11,707	12,833	12,917
Non Live Outcome	16,155	13,528	12,691	11,960	5,017	2,600	2,163
Total Outcome	22,804	20,152	20,031	21,981	16,724	15,433	15,080
	FY09-10	FY10-11	FY11-12	FY12-13	FY13-14	FY14-15	FY YTD
Total Live Out/Total Out	29.16%	32.87%	36.64%	45.59%	70.00%	83.15%	85.66%



Figures do not include close to 2000 stray pets taken in by HSTB and not transferred to PRC

Affordable Sterilization Vouchers

	Redeemed	Issued
Oct-15	380	1,022
Nov-15	612	810
Dec-15	831	786
Jan-16	409	879
Feb-16	481	832
Mar-16	308	918
Apr-16	407	710
May-16	511	1,106
Jun-16	690	1,083
Jul-16	336	835
Aug-16	490	873
Sep-16	1,159	248
FY Totals	6,614	10,102

License Tag Sales

	FY12-13	FY13-14	FY14-15	FY15-16
October	\$205,414	\$173,625	\$144,685	\$116,482
November	\$150,956	\$118,822	\$108,896	\$130,315
December	\$173,121	\$170,381	\$149,347	\$162,215
January	\$172,037	\$154,744	\$135,602	\$96,636
February	\$173,243	\$177,535	\$149,452	\$129,493
March	\$224,642	\$187,225	\$189,842	\$166,242
April	\$196,376	\$194,021	\$149,040	\$148,546
May	\$226,391	\$127,320	\$161,296	\$168,534
June	\$189,423	\$182,830	\$175,953	\$137,223
July	\$86,202	\$187,091	\$122,197	\$118,009
August	\$279,751	\$171,748	\$69,040	\$162,870
September	\$171,112	\$166,110	\$222,404	\$150,039
FY Totals	\$2,248,668	\$2,011,452	\$1,777,754	\$1,686,604

* Current monthly figures are pre-verification with Clerk (may be adjusted)