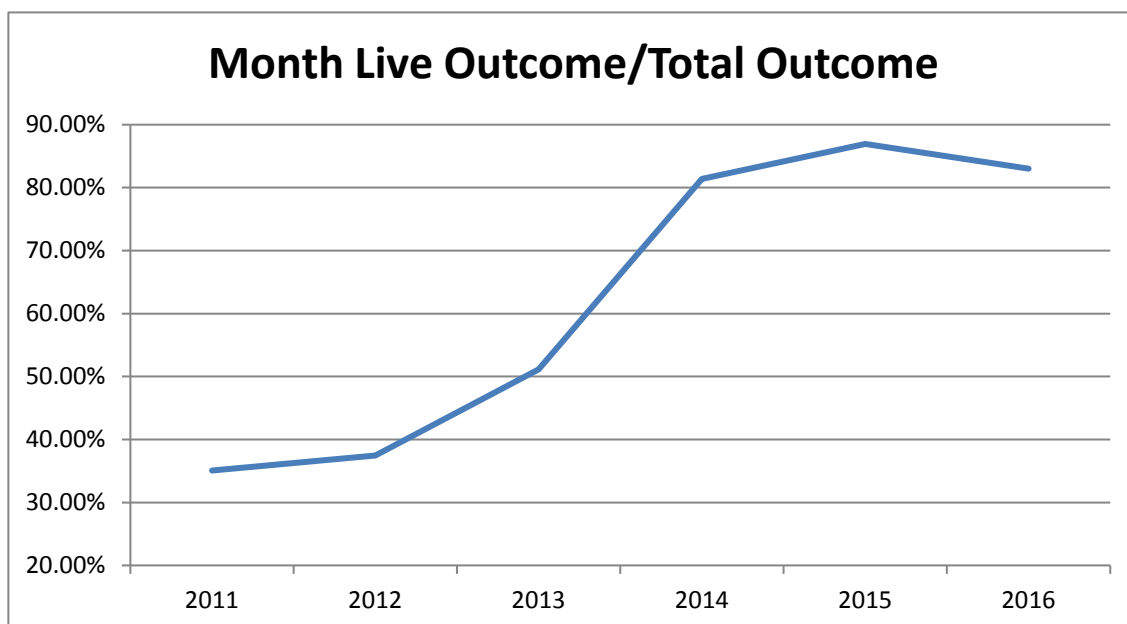


Monthly Data

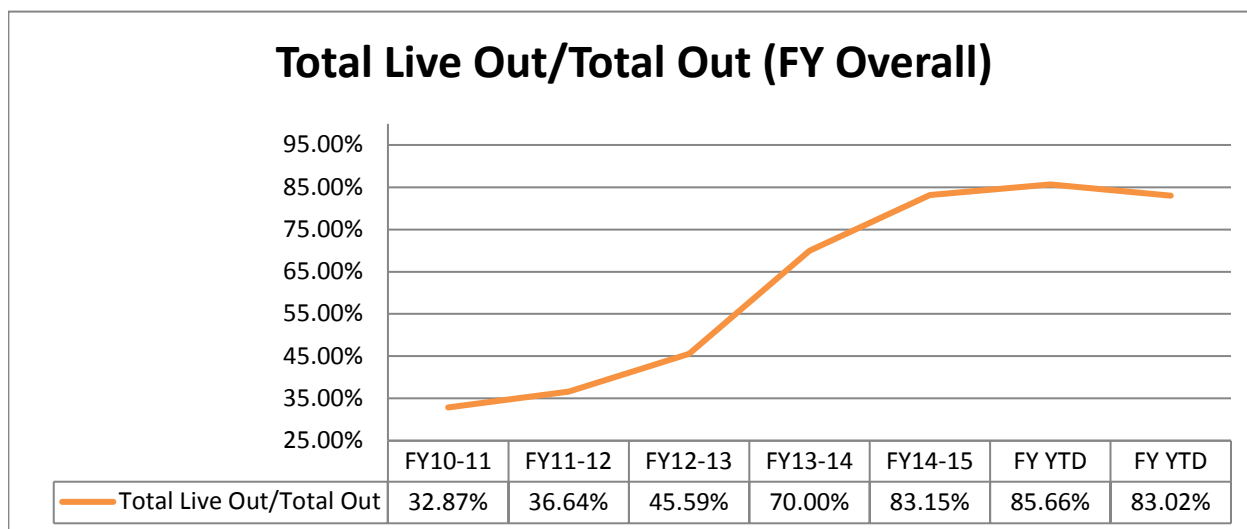
	Last Year			Current			Change
	DOG	CAT	TOTAL	DOG	CAT	TOTAL	
INTAKE							
Owner Surrender	142	72	214	180	218	398	86.0%
Returns (adopt + rescue)	31	3	34	29	13	42	23.5%
Stray Over the Counter	174	373	547	266	482	748	36.7%
Stray Impounded in Field	278	169	447	261	206	467	4.5%
Confiscated/Investigations	35	1	36	21	0	21	-41.7%
Abandoned & Transferred In	13	0	13	0	0	0	*
Born in Shelter	0	0	0	0	0	0	*
LIVE INTAKE	673	618	1,291	757	919	1,676	29.8%
OUTCOME							
Adoption	462	285	747	416	266	682	-8.7%
Returned to Owner	82	6	88	102	10	112	27.3%
Transfer to HSTB	16	0	16	85	48	133	731.3%
Sent to Rescue	92	112	204	41	242	283	38.7%
Community Cat Returns		110	110		81	81	-26.4%
Total Live Outcome	652	513	1,165	644	647	1,291	10.8%
Died in Custody/Transport	3	12	15	0	23	23	53.3%
Euthanasia	70	89	159	63	178	241	51.6%
Lost/Missing/Unaccounted For	0	1	1	0	0	0	*
Non-Live Outcome	73	102	175	63	201	264	50.9%
TOTAL OUTCOME	725	615	1,340	707	848	1,555	16.0%
Total Live Out/Total Out	89.93%	83.41%	86.94%	91.09%	76.30%	83.02%	
HSTB Kept Strays				55	41	96	
Monthly Comparisons	2011	2012	2013	2014	2015	2016	
Live Outcome/Total Outcome	35.07%	37.46%	51.14%	81.39%	86.94%	83.02%	



October 1st - October 31st

	FY15-16			FY16-17			Change
	DOG	CAT	TOTAL	DOG	CAT	TOTAL	
INTAKE							
Owner Surrender	142	72	214	180	218	398	86.0%
Returns (adopt + rescue)	31	3	34	29	13	42	23.5%
Stray Over the Counter	174	373	547	266	482	748	36.7%
Stray Impounded in Field	278	169	447	261	206	467	4.5%
Confiscated/Investigations	35	1	36	21	0	21	-41.7%
Abandoned & Transferred In	13	0	13	0	0	0	*
Born in Shelter	0	0	0	0	0	0	*
LIVE INTAKE	673	618	1,291	757	919	1,676	29.8%
OUTCOME							
Adoption	462	285	747	416	266	682	-8.7%
Returned to Owner	82	6	88	102	10	112	27.3%
Sent to Rescue or Shelter	108	112	220	126	290	416	89.1%
Community Cat Returns		110	110		81	81	-26.4%
Total Live Outcome	652	513	1,165	644	647	1,291	10.8%
Died in Custody, Foster, Offsite	3	12	15	0	23	23	53.3%
Euthanasia	70	89	159	63	178	241	51.6%
Lost/Missing/Unaccounted For	0	1	1	0	0	0	*
Non-Live Outcome	73	102	175	63	201	264	50.9%
TOTAL OUTCOME	725	615	1,340	707	848	1,555	16.0%
Total Live Out/Total Out	89.93%	83.41%	86.94%	91.09%	76.30%	83.02%	

<i>FY Totals (Current FY is YTD)</i>	FY10-11	FY11-12	FY12-13	FY13-14	FY14-15	FY15-16	FY YTD
Total Live Intake	20,118	20,099	21,493	16,893	14,778	15,620	1,676
Live Outcome	6,624	7,340	10,021	11,707	12,833	12,917	1,291
Non Live Outcome	13,528	12,691	11,960	5,017	2,600	2,163	264
Total Outcome	20,152	20,031	21,981	16,724	15,433	15,080	1,555
	FY10-11	FY11-12	FY12-13	FY13-14	FY14-15	FY YTD	FY YTD
Total Live Out/Total Out	32.87%	36.64%	45.59%	70.00%	83.15%	85.66%	83.02%



Figures do not include close to 2000 stray pets taken in by HSTB and not transferred to PRC

Affordable Sterilization Vouchers

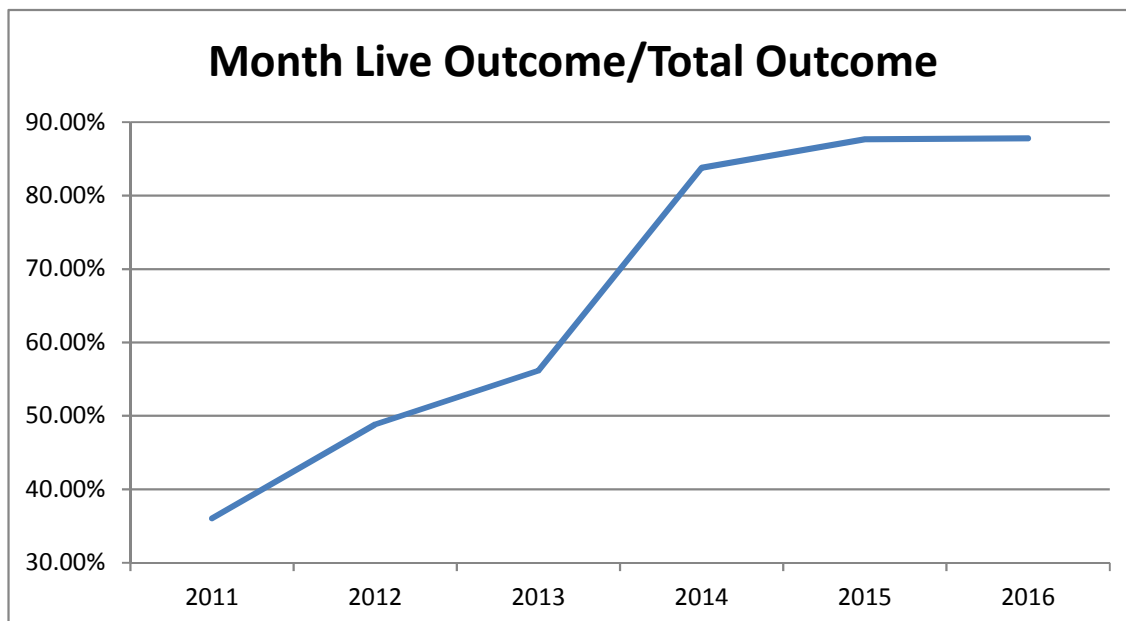
	Redeemed	Issued	Expired
Oct-16	506	748	307
Nov-16			
Dec-16			
Jan-17			
Feb-17			
Mar-17			
Apr-17			
May-17			
Jun-17			
Jul-17			
Aug-17			
Sep-17			
FY Totals	506	748	307

License Tag Sales

	FY14-15	FY15-16	FY16-17
October	\$144,685	\$116,482	\$115,996
November	\$108,896	\$130,315	
December	\$149,347	\$162,215	
January	\$135,602	\$96,636	
February	\$149,452	\$129,493	
March	\$189,842	\$166,242	
April	\$149,040	\$148,546	
May	\$161,296	\$168,534	
June	\$175,953	\$137,223	
July	\$122,197	\$118,009	
August	\$69,040	\$162,870	
September	\$222,404	\$150,039	
FY Totals	\$1,777,754	\$1,686,604	\$115,996

* Current monthly figures are pre-verification with Clerk (may be adjusted)

	Last Year	Nov-15		Current	Nov-16		Change
	DOG	CAT	TOTAL	DOG	CAT	TOTAL	
INTAKE							
Owner Surrender	113	75	188	153	87	240	27.7%
Returns	25	4	29	19	2	21	-27.6%
Stray Over the Counter	212	294	506	248	422	670	32.4%
Stray Impounded in Field	203	97	300	226	132	358	19.3%
Confiscated/Investigations	21	0	21	21	1	22	4.8%
Abandoned & Transferred In	6	0	6	0	0	0	*
Born in Shelter	0	0	0	0	0	0	*
LIVE INTAKE	580	470	1,050	667	644	1,311	24.9%
OUTCOME							
Adoption	307	252	559	381	335	716	28.1%
Returned to Owner	66	7	73	109	13	122	67.1%
Transfer to HSTB	20	16	36	80	38	118	227.8%
Sent to Rescue	122	89	211	74	254	328	55.5%
Community Cat Returns		74	74		62	62	-16.2%
Total Live Outcome	515	438	953	644	702	1,346	41.2%
Died in Custody/Transport	4	10	14	4	10	14	0.0%
Euthanasia	61	59	120	56	117	173	44.2%
Lost/Missing/Unaccounted For	0	0	0	0	0	0	*
Non-Live Outcome	65	69	134	60	127	187	39.6%
TOTAL OUTCOME	580	507	1,087	704	829	1,533	41.0%
Total Live Out/Total Out	88.79%	86.39%	87.67%	91.48%	84.68%	87.80%	
HSTB Kept Strays				76	42	118	
Monthly Comparisons	2011	2012	2013	2014	2015	2016	
Live Outcome/Total Outcome	36.04%	48.84%	56.18%	83.79%	87.67%	87.80%	

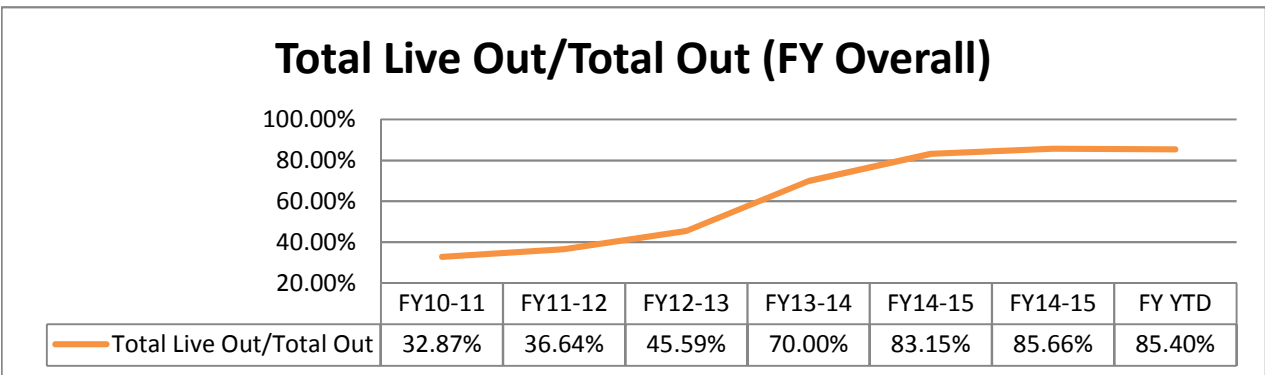


October 1st thru November 30th

	FY15-16			FY16-17			Change
	DOG	CAT	TOTAL	DOG	CAT	TOTAL	
INTAKE							
Owner Surrender	255	147	402	333	305	638	58.7%
Returns	56	7	63	48	15	63	0.0%
Stray Over the Counter	386	667	1,053	514	904	1,418	34.7%
Stray Impounded in Field	481	266	747	487	338	825	10.4%
Confiscated/Investigations	56	1	57	42	1	43	-24.6%
Abandoned & Transferred In	19	0	19	0	0	0	-100.0%
Born in Shelter	0	0	0	0	0	0	*
LIVE INTAKE	1,253	1,088	2,341	1,424	1,563	2,987	27.6%
OUTCOME							
Adoption	769	537	1,306	797	601	1,398	7.0%
Returned to Owner	148	13	161	211	23	234	45.3%
Transfer HSTB	36	16	52	165	86	251	382.7%
Sent to Rescue	214	201	415	115	496	611	47.2%
Community Cat Returns		184	184		143	143	-22.3%
Total Live Outcome	1,167	951	2,118	1,288	1,349	2,637	24.5%
Died in Custody, Foster, Offsite	7	22	29	4	33	37	27.6%
Euthanasia	131	148	279	119	295	414	48.4%
Lost/Missing/Unaccounted For	0	1	1	0	0	0	-100.0%
Non-Live Outcome	138	171	309	123	328	451	46.0%
TOTAL OUTCOME	1,305	1,122	2,427	1,411	1,677	3,088	27.2%
Total Live Out/Total Out	89.43%	84.76%	87.27%	91.28%	80.44%	85.40%	

HSTB Kept Strays				131	83	214
------------------	--	--	--	-----	----	-----

<i>FY Totals (Current FY is YTD)</i>	FY10-11	FY11-12	FY12-13	FY13-14	FY14-15	FY15-16	FY YTD
Total Live Intake	20,118	20,099	21,493	16,893	14,778	15,620	2,987
Live Outcome	6,624	7,340	10,021	11,707	12,833	12,917	2,637
Non Live Outcome	13,528	12,691	11,960	5,017	2,600	2,163	451
Total Outcome	20,152	20,031	21,981	16,724	15,433	15,080	3,088
	FY10-11	FY11-12	FY12-13	FY13-14	FY14-15	FY14-15	FY YTD
Total Live Out/Total Out	32.87%	36.64%	45.59%	70.00%	83.15%	85.66%	85.40%



"Adoptions" in past years included some currently classified as "Sent to Rescue"

Affordable Sterilization Vouchers

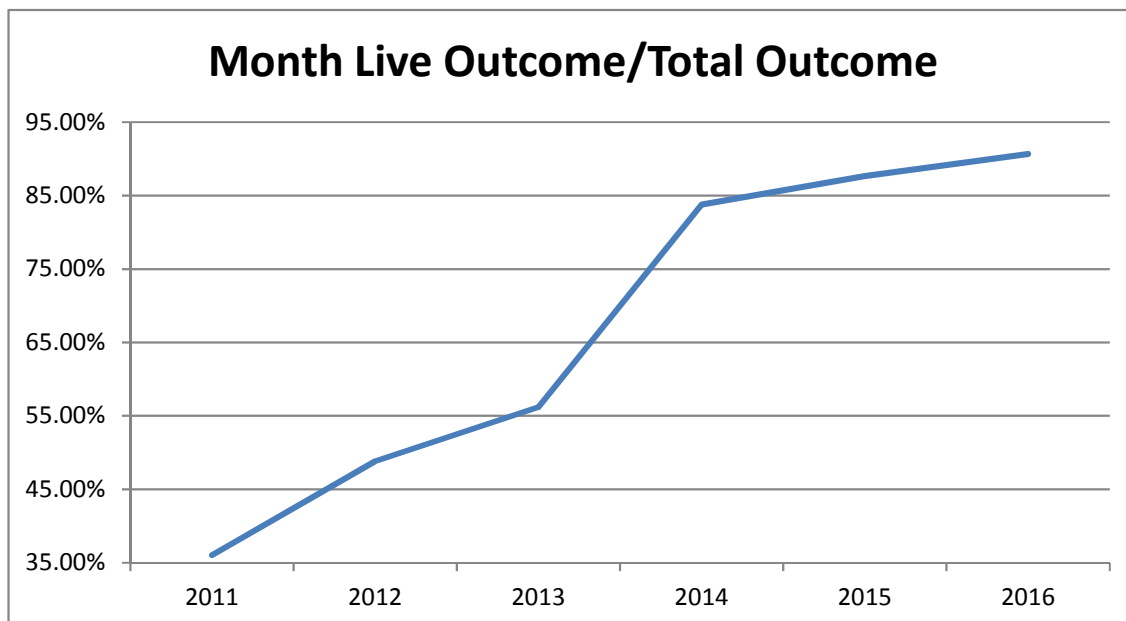
	Redeemed	Issued	Expired
Oct-16	506	748	307
Nov-16	290	618	53
Dec-16			
Jan-17			
Feb-17			
Mar-17			
Apr-17			
May-17			
Jun-17			
Jul-17			
Aug-17			
Sep-17			
FY Totals	796	1,366	360

License Tag Sales

	FY14-15	FY15-16	FY16-17
October	\$144,685	\$116,482	\$116,985
November	\$108,896	\$130,315	\$72,190
December	\$149,347	\$162,215	
January	\$135,602	\$96,636	
February	\$149,452	\$129,493	
March	\$189,842	\$166,242	
April	\$149,040	\$148,546	
May	\$161,296	\$168,534	
June	\$175,953	\$137,223	
July	\$122,197	\$118,009	
August	\$69,040	\$162,870	
September	\$222,404	\$150,039	
FY Totals	\$1,777,754	\$1,686,604	\$189,175

* Current monthly figures are pre-verification with Clerk (may be adjusted)
 November Fiscal accounting not complete at date of report: tag figure likely to change

	Last Year	Dec-15		Current	Dec-16		Change
	DOG	CAT	TOTAL	DOG	CAT	TOTAL	
INTAKE							
Owner Surrender	133	114	247	204	98	302	22.3%
Returns	26	12	38	34	14	48	26.3%
Stray Over the Counter	200	251	451	223	321	544	20.6%
Stray Impounded in Field	238	110	348	267	101	368	5.7%
Confiscated/Investigations	16	2	18	17	0	17	-5.6%
Abandoned & Transferred In	8	0	8	0	1	1	-87.5%
Born in Shelter	2	0	2	0	0	0	-100.0%
LIVE INTAKE	623	489	1,112	745	535	1,280	15.1%
OUTCOME							
Adoption	369	291	660	476	390	866	31.2%
Returned to Owner	77	5	82	109	9	118	43.9%
Transfer to HSTB	19	7	26	74	38	112	330.8%
Sent to Rescue	139	120	259	61	207	268	3.5%
Community Cat Returns		46	46		67	67	45.7%
Total Live Outcome	604	469	1,073	720	711	1,431	33.4%
Died in Custody/Transport	1	7	8	1	10	11	37.5%
Euthanasia	61	56	117	74	62	136	16.2%
Lost/Missing/Unaccounted For	0	1	1	0	0	0	-100.0%
Non-Live Outcome	62	64	126	75	72	147	16.7%
TOTAL OUTCOME	666	533	1,199	795	783	1,578	31.6%
Total Live Out/Total Out	90.69%	87.99%	89.49%	90.57%	90.80%	90.68%	
HSTB Kept Strays				87	44	131	
Monthly Comparisons	2011	2012	2013	2014	2015	2016	
Live Outcome/Total Outcome	36.04%	48.84%	56.18%	83.79%	87.67%	90.68%	

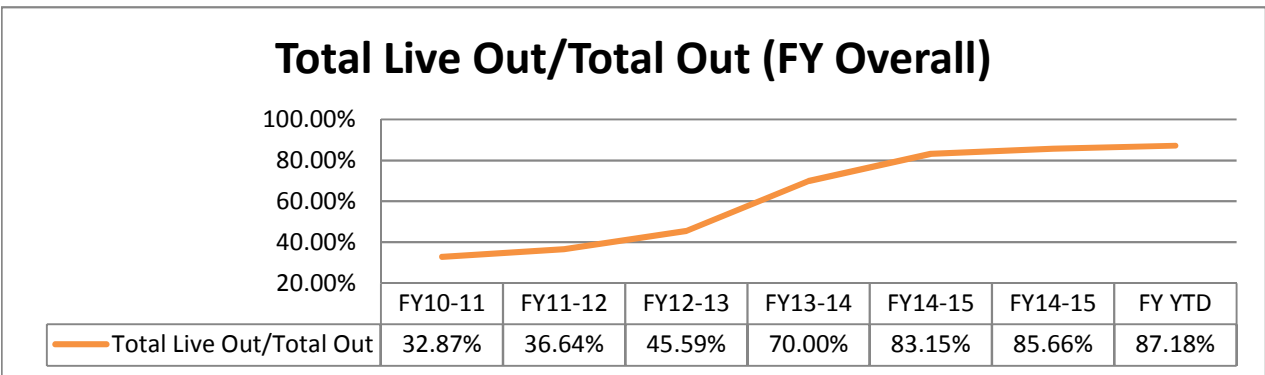


October 1st thru December 31st

	FY15-16			FY16-17			Change
	DOG	CAT	TOTAL	DOG	CAT	TOTAL	
INTAKE							
Owner Surrender	388	261	649	537	403	940	44.8%
Returns	82	19	101	82	29	111	9.9%
Stray Over the Counter	586	918	1,504	737	1,225	1,962	30.5%
Stray Impounded in Field	719	376	1,095	754	439	1,193	8.9%
Confiscated/Investigations	72	3	75	59	1	60	-20.0%
Abandoned & Transferred In	27	0	27	0	1	1	-96.3%
Born in Shelter	2	0	2	0	0	0	-100.0%
LIVE INTAKE	1,876	1,577	3,453	2,169	2,098	4,267	23.6%
OUTCOME							
Adoption	1,138	828	1,966	1,273	991	2,264	15.2%
Returned to Owner	225	18	243	320	32	352	44.9%
Transfer HSTB				239	124	363	*
Sent to Rescue	408	344	752	176	703	879	16.9%
Community Cat Returns		230	230		210	210	-8.7%
Total Live Outcome	1,771	1,420	3,191	2,008	2,060	4,068	27.5%
Died in Custody, Foster, Offsite	8	29	37	5	43	48	29.7%
Euthanasia	192	204	396	193	357	550	38.9%
Lost/Missing/Unaccounted For	0	2	2	0	0	0	-100.0%
Non-Live Outcome	200	235	435	198	400	598	37.5%
TOTAL OUTCOME	1,971	1,655	3,626	2,206	2,460	4,666	28.7%
Total Live Out/Total Out	89.85%	85.80%	88.00%	91.02%	83.74%	87.18%	

HSTB Kept Strays				218	127	345
------------------	--	--	--	-----	-----	-----

<i>FY Totals (Current FY is YTD)</i>	FY10-11	FY11-12	FY12-13	FY13-14	FY14-15	FY15-16	FY YTD
Total Live Intake	20,118	20,099	21,493	16,893	14,778	15,620	4,267
Live Outcome	6,624	7,340	10,021	11,707	12,833	12,917	4,068
Non Live Outcome	13,528	12,691	11,960	5,017	2,600	2,163	598
Total Outcome	20,152	20,031	21,981	16,724	15,433	15,080	4,666
	FY10-11	FY11-12	FY12-13	FY13-14	FY14-15	FY14-15	FY YTD
Total Live Out/Total Out	32.87%	36.64%	45.59%	70.00%	83.15%	85.66%	87.18%



"Adoptions" in past years included some currently classified as "Sent to Rescue"

Affordable Sterilization Vouchers

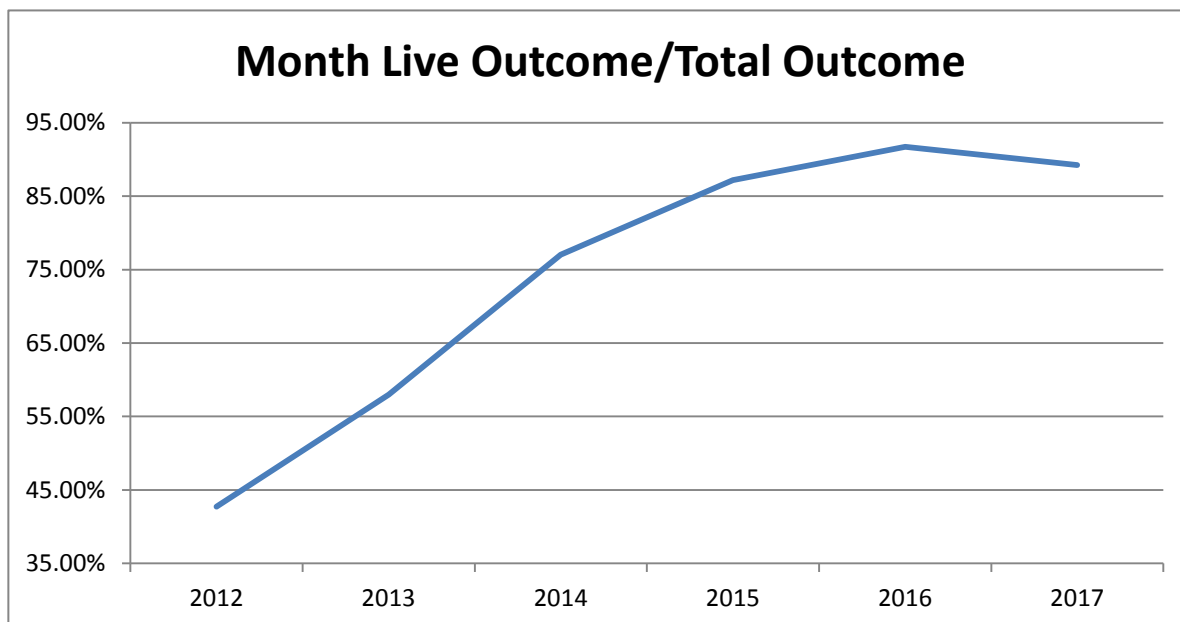
	Redeemed	Issued	Expired
Oct-16	506	748	307
Nov-16	290	618	53
Dec-16	763	521	317
Jan-17			
Feb-17			
Mar-17			
Apr-17			
May-17			
Jun-17			
Jul-17			
Aug-17			
Sep-17			
FY Totals	1,559	1,887	677

License Tag Sales

	FY14-15	FY15-16	FY16-17
October	\$144,685	\$116,482	\$116,985
November	\$108,896	\$130,315	\$136,977
December	\$149,347	\$162,215	\$154,211
January	\$135,602	\$96,636	
February	\$149,452	\$129,493	
March	\$189,842	\$166,242	
April	\$149,040	\$148,546	
May	\$161,296	\$168,534	
June	\$175,953	\$137,223	
July	\$122,197	\$118,009	
August	\$69,040	\$162,870	
September	\$222,404	\$150,039	
FY Totals	\$1,777,754	\$1,686,604	\$408,173

* Current monthly figures are pre-verification with Clerk (may be adjusted)

	Last Year DOG	Jan-16 CAT	TOTAL	Current DOG	Jan-17 CAT	TOTAL	Change
INTAKE							
Owner Surrender	147	71	218	193	83	276	26.6%
Returns	25	5	30	30	12	42	40.0%
Stray Over the Counter	211	186	397	247	244	491	23.7%
Stray Impounded in Field	283	93	376	320	150	470	25.0%
Confiscated/Investigations	13	0	13	19	0	19	46.2%
Abandoned & Transferred In	12	0	12	0	0	0	-100.0%
Born in Shelter	1	0	1	0	0	0	-100.0%
LIVE INTAKE	692	355	1,047	809	489	1,298	24.0%
OUTCOME							
Adoption	369	207	576	428	207	635	10.2%
Returned to Owner	99	5	104	133	11	144	38.5%
Transfer to HSTB	8	21	29	70	6	76	162.1%
Sent to Rescue	158	86	244	71	215	286	17.2%
Community Cat Returns		54	54		104	104	92.6%
Total Live Outcome	634	373	1,007	702	543	1,245	23.6%
Died in Custody/Transport	4	0	4	4	11	15	275.0%
Euthanasia	38	49	87	61	74	135	55.2%
Lost/Missing/Unaccounted For	0	0	0	0	0	0	*
Non-Live Outcome	42	49	91	65	85	150	64.8%
TOTAL OUTCOME	676	422	1,098	767	628	1,395	27.0%
Total Live Out/Total Out	93.79%	88.39%	91.71%	91.53%	86.46%	89.25%	
HSTB Kept Strays				92	82	174	
Monthly Comparisons	2012	2013	2014	2015	2016	2017	
Live Outcome/Total Outcome	42.73%	57.98%	77.02%	87.18%	91.71%	89.25%	



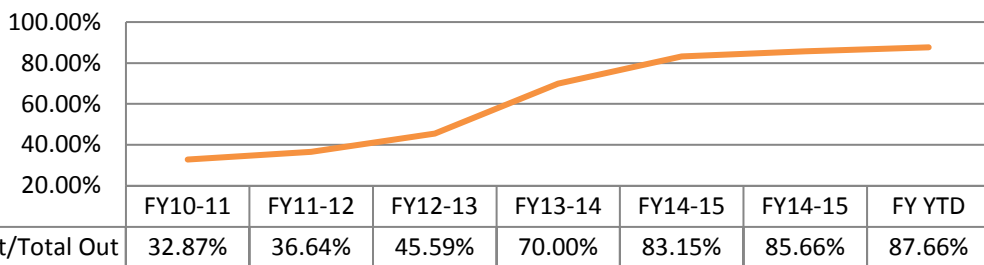
October 1st thru January 31st

	FY15-16			FY16-17			Change
	DOG	CAT	TOTAL	DOG	CAT	TOTAL	
INTAKE							
Owner Surrender	535	332	867	730	486	1,216	40.3%
Returns	107	24	131	112	41	153	16.8%
Stray Over the Counter	797	1,104	1,901	984	1,469	2,453	29.0%
Stray Impounded in Field	1,002	469	1,471	1,074	589	1,663	13.1%
Confiscated/Investigations	85	3	88	78	1	79	-10.2%
Abandoned & Transferred In	39	0	39	0	1	1	-97.4%
Born in Shelter	3	0	3	0	0	0	-100.0%
LIVE INTAKE	2,568	1,932	4,500	2,978	2,587	5,565	23.7%
OUTCOME							
Adoption	1,507	1,035	2,542	1,701	1,198	2,899	14.0%
Returned to Owner	324	23	347	453	43	496	42.9%
Transfer HSTB	63	44	107	317	134	451	321.5%
Sent to Rescue	511	407	918	239	914	1,153	25.6%
Community Cat Returns		284	284		314	314	10.6%
Total Live Outcome	2,405	1,793	4,198	2,710	2,603	5,313	26.6%
Died in Custody, Foster, Offsite	12	29	41	9	54	63	53.7%
Euthanasia	230	253	483	254	431	685	41.8%
Lost/Missing/Unaccounted For	0	2	2	0	0	0	-100.0%
Non-Live Outcome	242	284	526	263	485	748	42.2%
TOTAL OUTCOME	2,647	2,077	4,724	2,973	3,088	6,061	28.3%
Total Live Out/Total Out	90.86%	86.33%	88.87%	91.15%	84.29%	87.66%	

HSTB Kept Strays				310	209	519
------------------	--	--	--	-----	-----	-----

<i>FY Totals (Current FY is YTD)</i>	FY10-11	FY11-12	FY12-13	FY13-14	FY14-15	FY15-16	FY YTD
Total Live Intake	20,118	20,099	21,493	16,893	14,778	15,620	5,565
Live Outcome	6,624	7,340	10,021	11,707	12,833	12,917	5,313
Non Live Outcome	13,528	12,691	11,960	5,017	2,600	2,163	748
Total Outcome	20,152	20,031	21,981	16,724	15,433	15,080	6,061
	FY10-11	FY11-12	FY12-13	FY13-14	FY14-15	FY14-15	FY YTD
Total Live Out/Total Out	32.87%	36.64%	45.59%	70.00%	83.15%	85.66%	87.66%

Total Live Out/Total Out (FY Overall)



Affordable Sterilization Vouchers

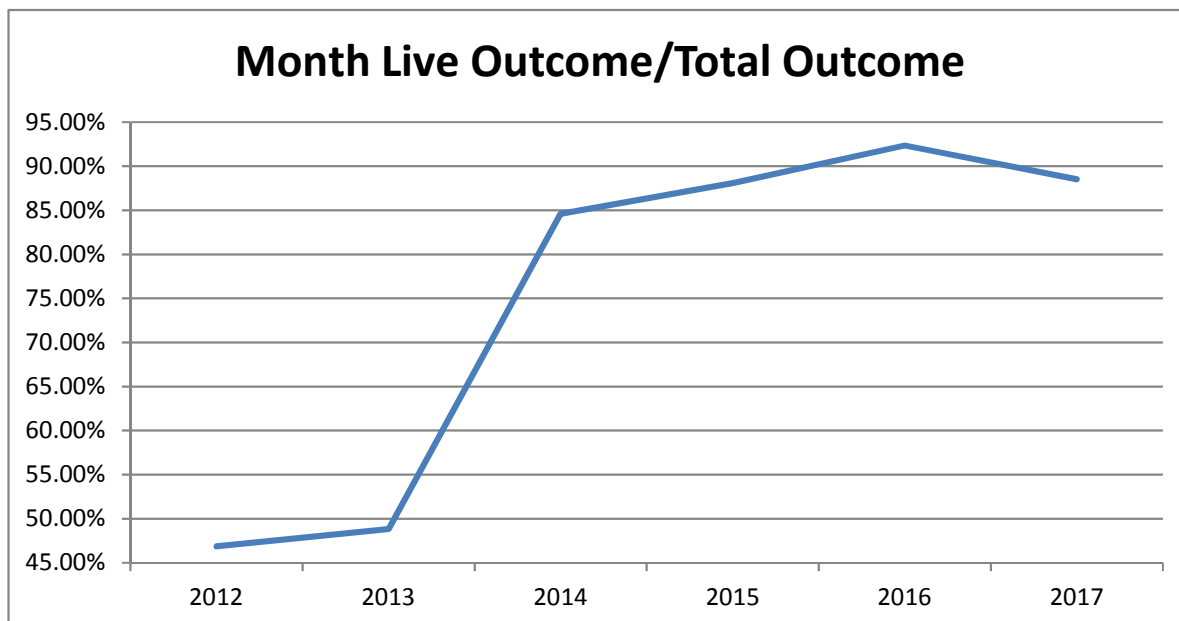
	Redeemed	Issued	Expired
Oct-16	506	748	307
Nov-16	290	618	53
Dec-16	763	521	317
Jan-17	567	554	244
Feb-17			
Mar-17			
Apr-17			
May-17			
Jun-17			
Jul-17			
Aug-17			
Sep-17			
FY Totals	2,126	2,441	921

License Tag Sales

	FY14-15	FY15-16	FY16-17	Change
October	\$144,685	\$116,482	\$116,985	0.43%
November	\$108,896	\$130,315	\$136,977	5.11%
December	\$149,347	\$162,215	\$154,211	-4.93%
January	\$135,602	\$96,636	\$158,793	64.32%
February	\$149,452	\$129,493		
March	\$189,842	\$166,242		
April	\$149,040	\$148,546		
May	\$161,296	\$168,534		
June	\$175,953	\$137,223		
July	\$122,197	\$118,009		
August	\$69,040	\$162,870		
September	\$222,404	\$150,039		
FY Totals	\$1,777,754	\$1,686,604	\$566,966	

* Current monthly figures are pre-verification with Clerk (may be adjusted)

	Last Year	Feb-16	TOTAL	Current	Feb-17	TOTAL	Change
	DOG	CAT		DOG	CAT		
INTAKE							
Owner Surrender	183	94	277	194	138	332	19.9%
Returns	34	10	44	32	13	45	2.3%
Stray Over the Counter	233	199	432	257	228	485	12.3%
Stray Impounded in Field	179	96	275	223	201	424	54.2%
Confiscated/Investigations	21	10	31	46	2	48	54.8%
Abandoned & Transferred In	12	0	12	0	0	0	-100.0%
Born in Shelter	0	1	1	0	0	0	-100.0%
LIVE INTAKE	662	410	1,072	752	582	1,334	24.4%
OUTCOME							
Adoption	377	198	575	423	205	628	9.2%
Returned to Owner	75	3	78	105	7	112	43.6%
Transfer to HSTB	11	35	46	69	32	101	119.6%
Sent to Rescue	144	117	261	53	136	189	-27.6%
Community Cat Returns		54	54		175	175	224.1%
Total Live Outcome	607	407	1,014	650	555	1,205	18.8%
Died in Custody/Transport	3	3	6	8	4	12	100.0%
Euthanasia	39	38	77	44	100	144	87.0%
Lost/Missing/Unaccounted For	0	1	1	0	0	0	*
Non-Live Outcome	42	42	84	52	104	156	85.7%
TOTAL OUTCOME	649	449	1,098	702	659	1,361	24.0%
Total Live Out/Total Out	93.53%	90.65%	92.35%	92.59%	84.22%	88.54%	
HSTB Kept Strays				65	43	108	
Monthly Comparisons	2012	2013	2014	2015	2016	2017	
Live Outcome/Total Outcome	46.85%	48.84%	84.61%	88.09%	92.35%	88.54%	



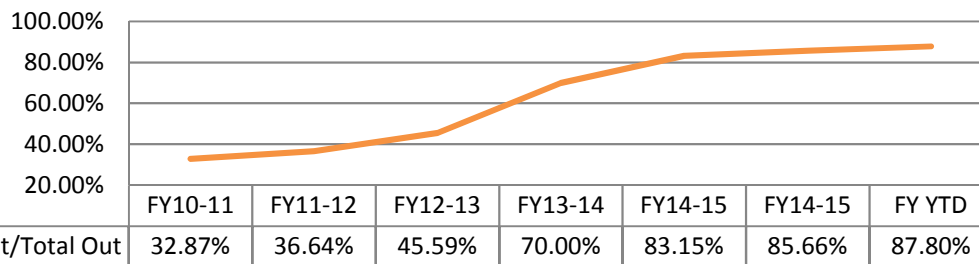
October 1st thru February 28th

	FY15-16			FY16-17			Change
	DOG	CAT	TOTAL	DOG	CAT	TOTAL	
INTAKE							
Owner Surrender	718	426	1,144	924	624	1,548	35.3%
Returns	141	34	175	144	54	198	13.1%
Stray Over the Counter	1,030	1,303	2,333	1,241	1,697	2,938	25.9%
Stray Impounded in Field	1,181	565	1,746	1,297	790	2,087	19.5%
Confiscated/Investigations	106	13	119	124	3	127	6.7%
Abandoned & Transferred In	51	0	51	0	1	1	-98.0%
Born in Shelter	3	1	4	0	0	0	-100.0%
LIVE INTAKE	3,230	2,342	5,572	3,730	3,169	6,899	23.8%
OUTCOME							
Adoption	1,884	1,233	3,117	2,124	1,403	3,527	13.2%
Returned to Owner	399	26	425	558	50	608	43.1%
Transfer HSTB	74	79	153	386	166	552	260.8%
Sent to Rescue	695	524	1,219	292	1,040	1,332	9.3%
Community Cat Returns		338	338		489	489	44.7%
Total Live Outcome	3,052	2,200	5,252	3,360	3,148	6,508	23.9%
Died in Custody, Foster, Offsite	15	32	47	17	58	75	59.6%
Euthanasia	269	291	560	298	531	829	48.0%
Lost/Missing/Unaccounted For	0	3	3	0	0	0	-100.0%
Non-Live Outcome	284	326	610	315	589	904	48.2%
TOTAL OUTCOME	3,336	2,526	5,862	3,675	3,737	7,412	26.4%
Total Live Out/Total Out	91.49%	87.09%	89.59%	91.43%	84.24%	87.80%	

HSTB Kept Strays				375	252	627
------------------	--	--	--	-----	-----	-----

<i>FY Totals (Current FY is YTD)</i>	FY10-11	FY11-12	FY12-13	FY13-14	FY14-15	FY15-16	FY YTD
Total Live Intake	20,118	20,099	21,493	16,893	14,778	15,620	6,899
Live Outcome	6,624	7,340	10,021	11,707	12,833	12,917	6,508
Non Live Outcome	13,528	12,691	11,960	5,017	2,600	2,163	904
Total Outcome	20,152	20,031	21,981	16,724	15,433	15,080	7,412
	FY10-11	FY11-12	FY12-13	FY13-14	FY14-15	FY14-15	FY YTD
Total Live Out/Total Out	32.87%	36.64%	45.59%	70.00%	83.15%	85.66%	87.80%

Total Live Out/Total Out (FY Overall)



Affordable Sterilization Vouchers

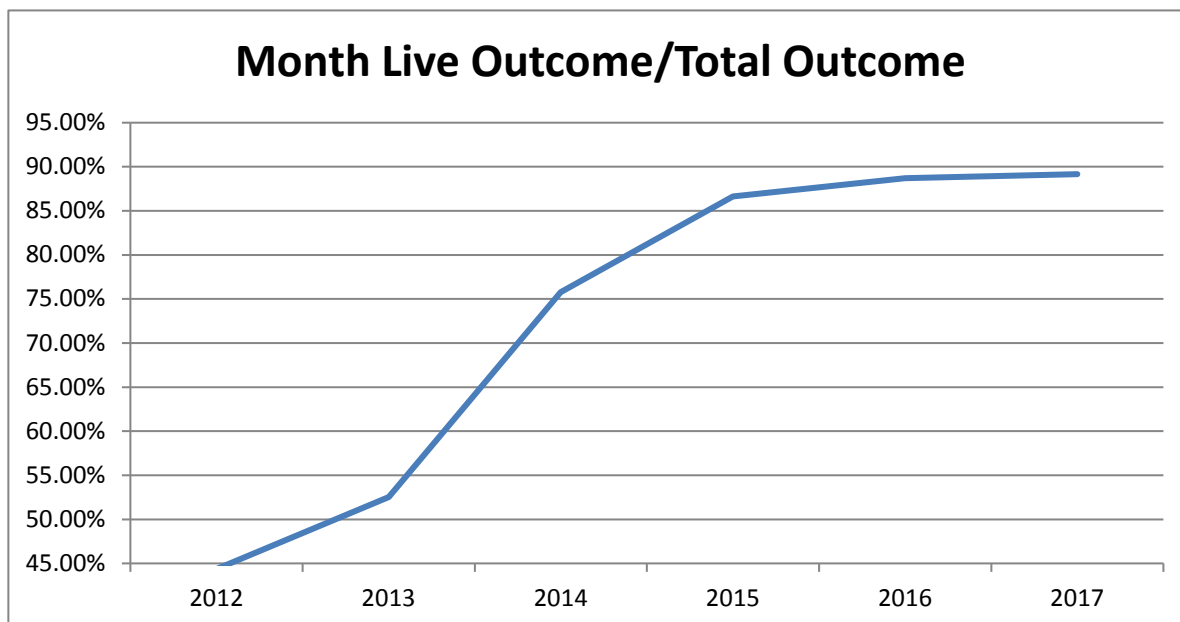
	Redeemed	Issued	Expired
Oct-16	506	748	307
Nov-16	290	618	53
Dec-16	763	521	317
Jan-17	567	554	244
Feb-17	437	702	268
Mar-17			
Apr-17			
May-17			
Jun-17			
Jul-17			
Aug-17			
Sep-17			
FY Totals	2,563	3,143	1,189

License Tag Sales

	FY14-15	FY15-16	FY16-17
October	\$144,685	\$116,482	\$116,985
November	\$108,896	\$130,315	\$136,977
December	\$149,347	\$162,215	\$154,211
January	\$135,602	\$96,636	\$158,793
February	\$149,452	\$129,493	\$109,638
March	\$189,842	\$166,242	
April	\$149,040	\$148,546	
May	\$161,296	\$168,534	
June	\$175,953	\$137,223	
July	\$122,197	\$118,009	
August	\$69,040	\$162,870	
September	\$222,404	\$150,039	
FY Totals	\$1,777,754	\$1,686,604	\$676,604

* Current monthly figures are pre-verification with Clerk (may be adjusted)

	Last Year	Mar-16	TOTAL	Current	Mar-17	TOTAL	Change
	DOG	CAT		DOG	CAT		
INTAKE							
Owner Surrender	145	127	272	230	219	449	65.1%
Returns	27	2	29	57	5	62	113.8%
Stray Over the Counter	270	255	525	231	226	457	-13.0%
Stray Impounded in Field	209	93	302	272	199	471	56.0%
Confiscated/Investigations	18	5	23	16	7	23	0.0%
Abandoned & Transferred In	14	0	14	0	0	0	-100.0%
Born in Shelter	0	0	0	0	0	0	*
LIVE INTAKE	683	482	1,165	806	656	1,462	25.5%
OUTCOME							
Adoption	381	184	565	420	226	646	14.3%
Returned to Owner	85	8	93	137	10	147	58.1%
Transfer to HSTB	18	21	39	84	38	122	212.8%
Sent to Rescue	143	81	224	111	146	257	14.7%
Community Cat Returns		52	52		111	111	113.5%
Total Live Outcome	627	346	973	752	531	1,283	31.9%
Died in Custody/Transport	5	4	9	2	1	3	-66.7%
Euthanasia	43	72	115	76	77	153	33.0%
Lost/Missing/Unaccounted For	0	0	0	0	0	0	*
Non-Live Outcome	48	76	124	78	78	156	25.8%
TOTAL OUTCOME	675	422	1,097	830	609	1,439	31.2%
Total Live Out/Total Out	92.89%	81.99%	88.70%	90.60%	87.19%	89.16%	
HSTB Kept Strays				71	67	138	
Monthly Comparisons	2012	2013	2014	2015	2016	2017	
Live Outcome/Total Outcome	44.36%	52.54%	75.78%	86.62%	88.70%	89.16%	



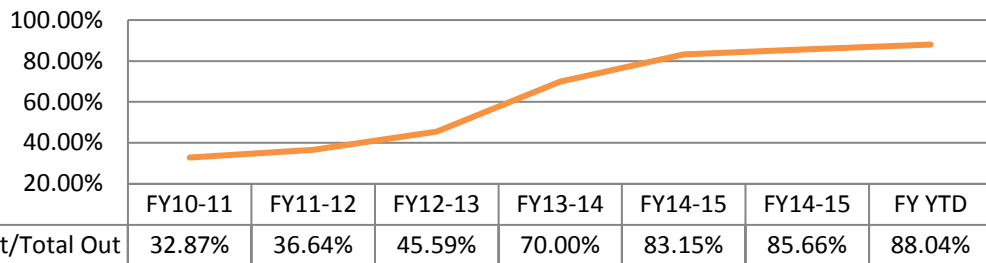
October 1st thru March 31st

	FY15-16			FY16-17			Change
	DOG	CAT	TOTAL	DOG	CAT	TOTAL	
INTAKE							
Owner Surrender	863	553	1,416	1,154	843	1,997	41.0%
Returns	168	36	204	201	59	260	27.5%
Stray Over the Counter	1,300	1,558	2,858	1,472	1,923	3,395	18.8%
Stray Impounded in Field	1,390	658	2,048	1,569	989	2,558	24.9%
Confiscated/Investigations	124	18	142	140	10	150	5.6%
Abandoned & Transferred In	65	0	65	0	0	0	-100.0%
Born in Shelter	3	1	4	0	0	0	-100.0%
LIVE INTAKE	3,913	2,824	6,737	4,536	3,824	8,360	24.1%
OUTCOME							
Adoption	2,265	1,417	3,682	2,544	1,629	4,173	13.3%
Returned to Owner	484	34	518	695	60	755	45.8%
Transfer HSTB	92	100	192	470	204	674	251.0%
Sent to Rescue	798	605	1,403	403	1,196	1,599	14.0%
Community Cat Returns		390	390		600	600	53.8%
Total Live Outcome	3,639	2,546	6,185	4,112	3,689	7,801	26.1%
Died in Custody, Foster, Offsite	20	36	56	19	59	78	39.3%
Euthanasia	312	363	675	374	608	982	45.5%
Lost/Missing/Unaccounted For	0	3	3	0	0	0	-100.0%
Non-Live Outcome	332	402	734	393	667	1,060	44.4%
TOTAL OUTCOME	3,971	2,948	6,919	4,505	4,356	8,861	28.1%
Total Live Out/Total Out	91.64%	86.36%	89.39%	91.28%	84.69%	88.04%	

HSTB Kept Strays				446	319	765
------------------	--	--	--	-----	-----	------------

<i>FY Totals (Current FY is YTD)</i>	FY10-11	FY11-12	FY12-13	FY13-14	FY14-15	FY15-16	FY YTD
Total Live Intake	20,118	20,099	21,493	16,893	14,778	15,620	9,360
Live Outcome	6,624	7,340	10,021	11,707	12,833	12,917	7,801
Non Live Outcome	13,528	12,691	11,960	5,017	2,600	2,163	1,060
Total Outcome	20,152	20,031	21,981	16,724	15,433	15,080	8,861
	FY10-11	FY11-12	FY12-13	FY13-14	FY14-15	FY14-15	FY YTD
Total Live Out/Total Out	32.87%	36.64%	45.59%	70.00%	83.15%	85.66%	88.04%

Total Live Out/Total Out (FY Overall)



Affordable Sterilization Vouchers

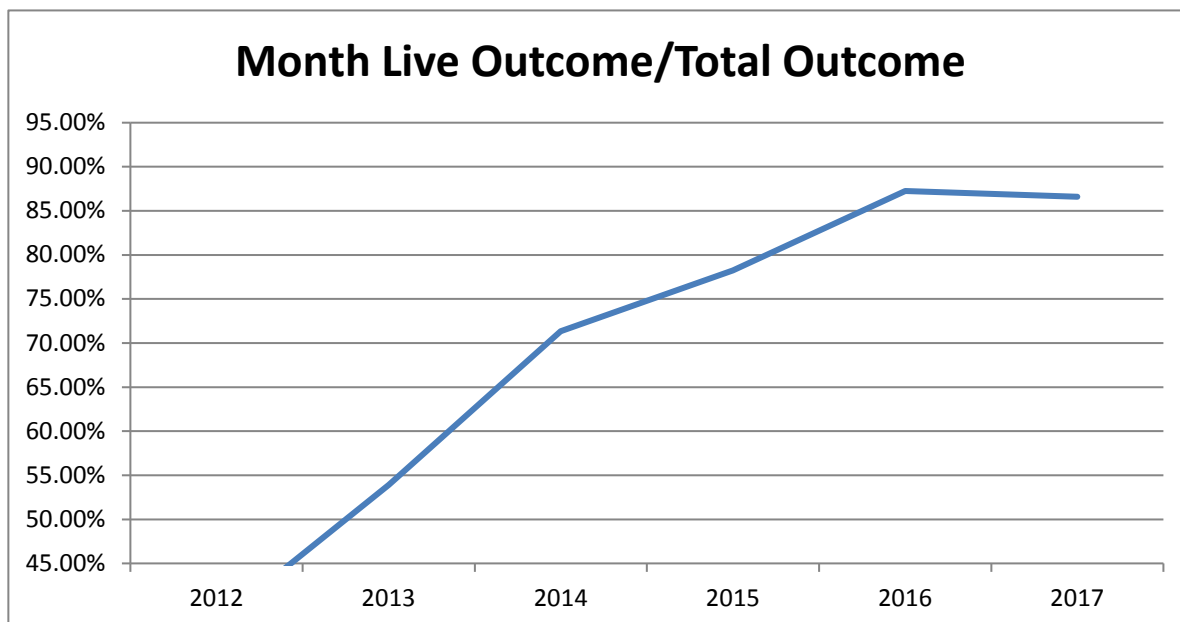
	Redeemed	Issued	Expired
Oct-16	506	748	307
Nov-16	290	618	53
Dec-16	763	521	317
Jan-17	567	554	244
Feb-17	437	702	268
Mar-17	658	729	6
Apr-17			
May-17			
Jun-17			
Jul-17			
Aug-17			
Sep-17			
FY Totals	3,221	3,872	1,195

License Tag Sales

	FY14-15	FY15-16	FY16-17
October	\$144,685	\$116,482	\$116,985
November	\$108,896	\$130,315	\$136,977
December	\$149,347	\$162,215	\$154,211
January	\$135,602	\$96,636	\$158,793
February	\$149,452	\$129,493	\$109,638
March	\$189,842	\$166,242	\$183,857
April	\$149,040	\$148,546	
May	\$161,296	\$168,534	
June	\$175,953	\$137,223	
July	\$122,197	\$118,009	
August	\$69,040	\$162,870	
September	\$222,404	\$150,039	
FY Totals	\$1,777,754	\$1,686,604	\$860,461

* Current monthly figures are pre-verification with Clerk (may be adjusted)

	Last Year DOG	Apr-16 CAT	TOTAL	Current DOG	Apr-17 CAT	TOTAL	Change
INTAKE							
Owner Surrender	165	120	285	302	91	393	37.9%
Returns	25	5	30	35	7	42	40.0%
Stray Over the Counter	247	342	589	216	354	570	-3.2%
Stray Impounded in Field	211	153	364	211	240	451	23.9%
Confiscated/Investigations	21	1	22	82	1	83	277.3%
Abandoned & Transferred In	14	0	14	0	0	0	-100.0%
Born in Shelter	0	4	4	0	5	5	25.0%
LIVE INTAKE	683	625	1,308	846	698	1,544	18.0%
OUTCOME							
Adoption	390	191	581	434	165	599	3.1%
Returned to Owner	83	9	92	76	16	92	0.0%
Transfer to HSTB	20	22	42	86	23	109	159.5%
Sent to Rescue	123	185	308	154	143	297	-3.6%
Community Cat Returns		51	51		80	80	56.9%
Total Live Outcome	616	458	1,074	750	427	1,177	9.6%
Died in Custody/Transport	1	4	5	4	11	15	200.0%
Euthanasia	66	86	152	67	100	167	9.9%
Lost/Missing/Unaccounted For	0	0	0	0	0	0	*
Non-Live Outcome	67	90	157	71	111	182	15.9%
TOTAL OUTCOME	683	548	1,231	821	538	1,359	10.4%
Total Live Out/Total Out	90.19%	83.58%	87.25%	91.35%	79.37%	86.61%	
HSTB Kept Strays				67	84	151	
Monthly Comparisons	2012	2013	2014	2015	2016	2017	
Live Outcome/Total Outcome	38.21%	53.90%	71.33%	78.26%	87.25%	86.61%	



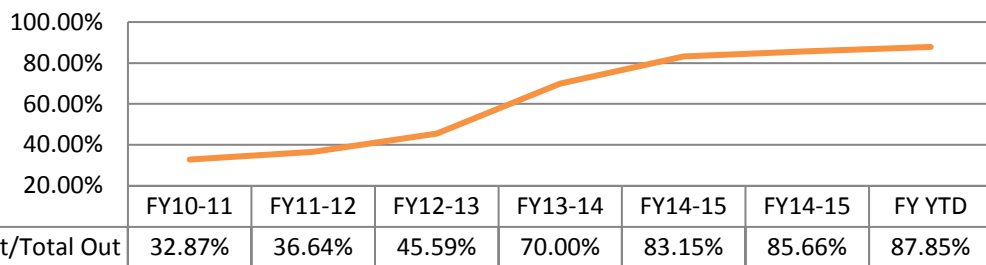
October 1st thru April 30th

	FY15-16			FY16-17			Change
	DOG	CAT	TOTAL	DOG	CAT	TOTAL	
INTAKE							
Owner Surrender	1,028	673	1,701	1,456	934	2,390	40.5%
Returns	193	41	234	236	66	302	29.1%
Stray Over the Counter	1,547	1,900	3,447	1,688	2,277	3,965	15.0%
Stray Impounded in Field	1,601	811	2,412	1,780	1,229	3,009	24.8%
Confiscated/Investigations	145	19	164	222	11	233	42.1%
Abandoned & Transferred In	79	0	79	0	1	1	-98.7%
Born in Shelter	3	5	8	0	5	5	-37.5%
LIVE INTAKE	4,596	3,449	8,045	5,382	4,523	9,905	23.1%
OUTCOME							
Adoption	2,655	1,608	4,263	2,978	1,794	4,772	11.9%
Returned to Owner	567	43	610	771	76	847	38.9%
Transfer HSTB	112	122	234	556	227	783	234.6%
Sent to Rescue	921	790	1,711	557	1,339	1,896	10.8%
Community Cat Returns		441	441		680	680	54.2%
Total Live Outcome	4,255	3,004	7,259	4,862	4,116	8,978	23.7%
Died in Custody, Foster, Offsite	21	40	61	23	70	93	52.5%
Euthanasia	378	449	827	441	708	1,149	38.9%
Lost/Missing/Unaccounted For	0	3	3	0	0	0	-100.0%
Non-Live Outcome	399	492	891	464	778	1,242	39.4%
TOTAL OUTCOME	4,654	3,496	8,150	5,326	4,894	10,220	25.4%
Total Live Out/Total Out	91.43%	85.93%	89.07%	91.29%	84.10%	87.85%	

HSTB Kept Strays				513	403	916
------------------	--	--	--	-----	-----	------------

<i>FY Totals (Current FY is YTD)</i>	FY10-11	FY11-12	FY12-13	FY13-14	FY14-15	FY15-16	FY YTD
Total Live Intake	20,118	20,099	21,493	16,893	14,778	15,620	9,905
Live Outcome	6,624	7,340	10,021	11,707	12,833	12,917	8,978
Non Live Outcome	13,528	12,691	11,960	5,017	2,600	2,163	1,242
Total Outcome	20,152	20,031	21,981	16,724	15,433	15,080	10,220
	FY10-11	FY11-12	FY12-13	FY13-14	FY14-15	FY14-15	FY YTD
Total Live Out/Total Out	32.87%	36.64%	45.59%	70.00%	83.15%	85.66%	87.85%

Total Live Out/Total Out (FY Overall)



Affordable Sterilization Vouchers

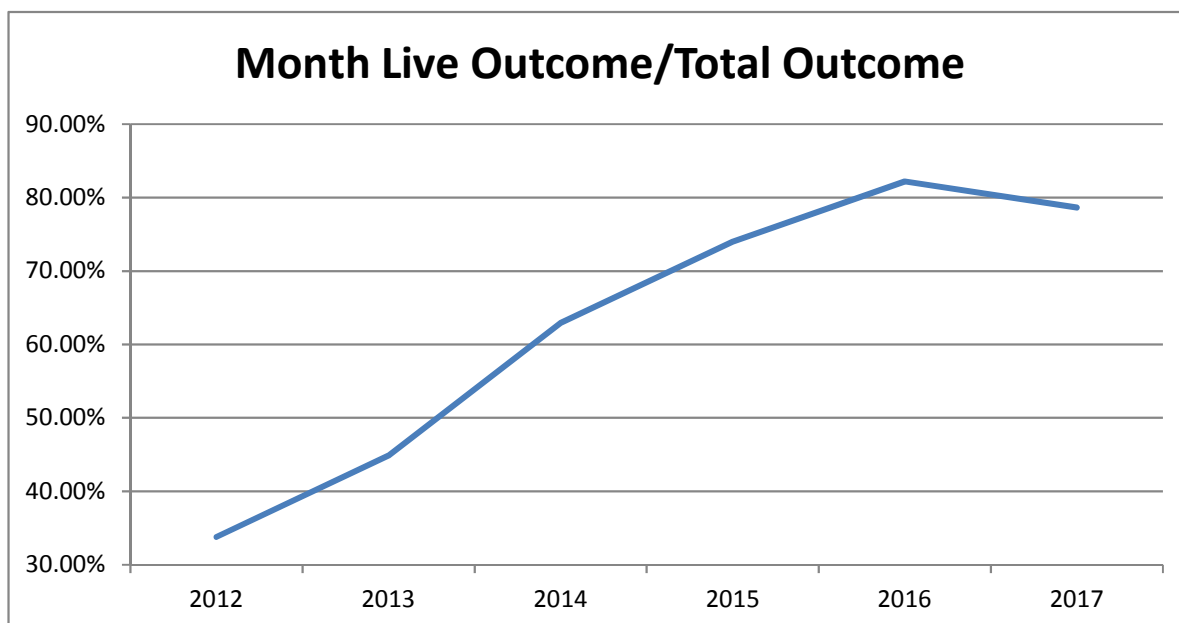
	Redeemed	Issued	Expired
Oct-16	506	748	307
Nov-16	290	618	53
Dec-16	763	521	317
Jan-17	567	554	244
Feb-17	437	702	268
Mar-17	658	729	6
Apr-17	494	622	2
May-17			
Jun-17			
Jul-17			
Aug-17			
Sep-17			
FY Totals	3,715	4,494	1,197

License Tag Sales

	FY14-15	FY15-16	FY16-17
October	\$144,685	\$116,482	\$116,985
November	\$108,896	\$130,315	\$136,977
December	\$149,347	\$162,215	\$154,211
January	\$135,602	\$96,636	\$158,793
February	\$149,452	\$129,493	\$109,638
March	\$189,842	\$166,242	\$184,382
April	\$149,040	\$148,546	\$154,457
May	\$161,296	\$168,534	
June	\$175,953	\$137,223	
July	\$122,197	\$118,009	
August	\$69,040	\$162,870	
September	\$222,404	\$150,039	
FY Totals	\$1,777,754	\$1,686,604	\$1,015,443

* Current monthly figures are pre-verification with Clerk (may be adjusted)

	Last Year	May-16	TOTAL	Current	May-17	TOTAL	Change
	DOG	CAT		DOG	CAT		
INTAKE							
Owner Surrender	135	94	229	242	105	347	51.5%
Returns (adopt + rescues)	30	7	37	47	5	52	40.5%
Stray Over the Counter	204	425	629	253	575	828	31.6%
Stray Impounded in Field	253	212	465	299	260	559	20.2%
Confiscated/Investigations	27	11	38	14	5	19	-50.0%
Abandoned & Transferred In	3	0	3	2	1	3	0.0%
Born in Shelter	0	0	0	0	4	4	100.0%
LIVE INTAKE	652	749	1,401	857	955	1,812	29.3%
OUTCOME							
Adoption	292	179	471	459	212	671	42.5%
Returned to Owner	88	7	95	87	6	93	-2.1%
Transfer to HSTB	24	11	35	115	13	128	265.7%
Sent to Rescue	116	193	309	55	244	299	-3.2%
Community Cat Returns		60	60		50	50	-16.7%
Total Live Outcome	520	450	970	716	525	1,241	27.9%
Died in Custody/Transport	0	5	5	2	18	20	300.0%
Euthanasia	79	124	203	81	236	317	56.2%
Lost/Missing/Unaccounted For	0	2	2	0	0	0	-100.0%
Non-Live Outcome	79	131	210	83	254	337	60.5%
TOTAL OUTCOME	599	581	1,180	799	779	1,578	33.7%
Total Live Out/Total Out	86.81%	77.45%	82.20%	89.61%	67.39%	78.64%	
HSTB Kept Strays				117	194	311	
	2012	2013	2014	2015	2016	2017	
Live Outcome/Total Outcome	33.78%	44.87%	62.91%	73.98%	82.20%	78.64%	

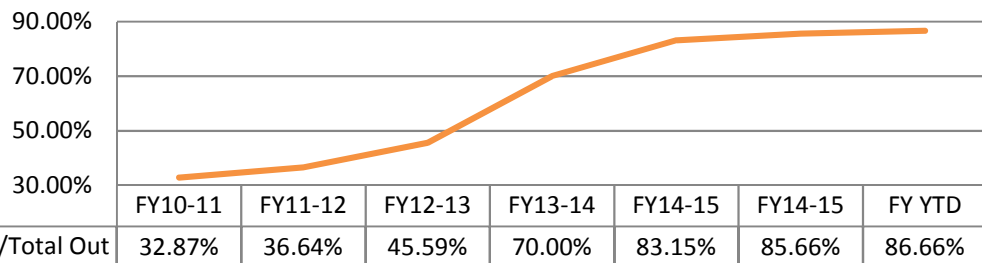


October 1st thru May 31st

	FY15-16			FY16-17			Change
	DOG	CAT	TOTAL	DOG	CAT	TOTAL	
INTAKE							
Owner Surrender	1,163	767	1,930	1,698	1,039	2,737	41.8%
Returns (adoption + rescue)	223	48	271	283	71	354	30.6%
Stray Over the Counter	1,751	2,325	4,076	1,941	2,852	4,793	17.6%
Stray Impounded in Field	1,854	1,023	2,877	2,079	1,489	3,568	24.0%
Confiscated/Investigations	172	30	202	236	16	252	24.8%
Abandoned & Transferred In	82	0	82	2	2	4	-95.1%
Born in Shelter	3	5	8	0	9	9	12.5%
LIVE INTAKE	5,248	4,198	9,446	6,239	5,478	11,717	24.0%
OUTCOME							
Adoption	2,947	1,787	4,734	3,437	2,006	5,443	15.0%
Returned to Owner	655	50	705	858	82	940	33.3%
Sent to Rescue	1,173	1,116	2,289	1,283	1,823	3,106	35.7%
Community Cat Returns		501	501		730	730	45.7%
Total Live Outcome	4,775	3,454	8,229	5,578	4,641	10,219	24.2%
Died in Custody, Foster, Offsite	21	45	66	25	88	113	71.2%
Euthanasia	457	573	1,030	516	944	1,460	41.7%
Lost/Missing/Unaccounted For	0	5	5	0	0	0	-100.0%
Non-Live Outcome	478	623	1,101	541	1,032	1,573	42.9%
TOTAL OUTCOME	5,253	4,077	9,330	6,119	5,673	11,792	26.4%
Total Live Out/Total Out	90.90%	84.72%	88.20%	91.16%	81.81%	86.66%	
HSTB Kept Strays				630	597	1227	

<i>FY Totals (Current FY is YTD)</i>	FY10-11	FY11-12	FY12-13	FY13-14	FY14-15	FY15-16	FY YTD
Total Live Intake	20,118	20,099	21,493	16,893	14,778	15,620	11,717
Live Outcome	6,624	7,340	10,021	11,707	12,833	12,917	10,219
Non Live Outcome	13,528	12,691	11,960	5,017	2,600	2,163	1,573
Total Outcome	20,152	20,031	21,981	16,724	15,433	15,080	11,792
	FY10-11	FY11-12	FY12-13	FY13-14	FY14-15	FY14-15	FY YTD
Total Live Out/Total Out	32.87%	36.64%	45.59%	70.00%	83.15%	85.66%	86.66%

Total Live Out/Total Out (FY Overall)



Affordable Sterilization Vouchers

	Redeemed	Issued	Expired
Oct-16	506	748	307
Nov-16	290	618	53
Dec-16	763	521	317
Jan-17	567	554	244
Feb-17	437	702	268
Mar-17	658	729	6
Apr-17	494	622	2
May-17	580	379	417
Jun-17			
Jul-17			
Aug-17			
Sep-17			
FY Totals	4,295	4,873	1,614

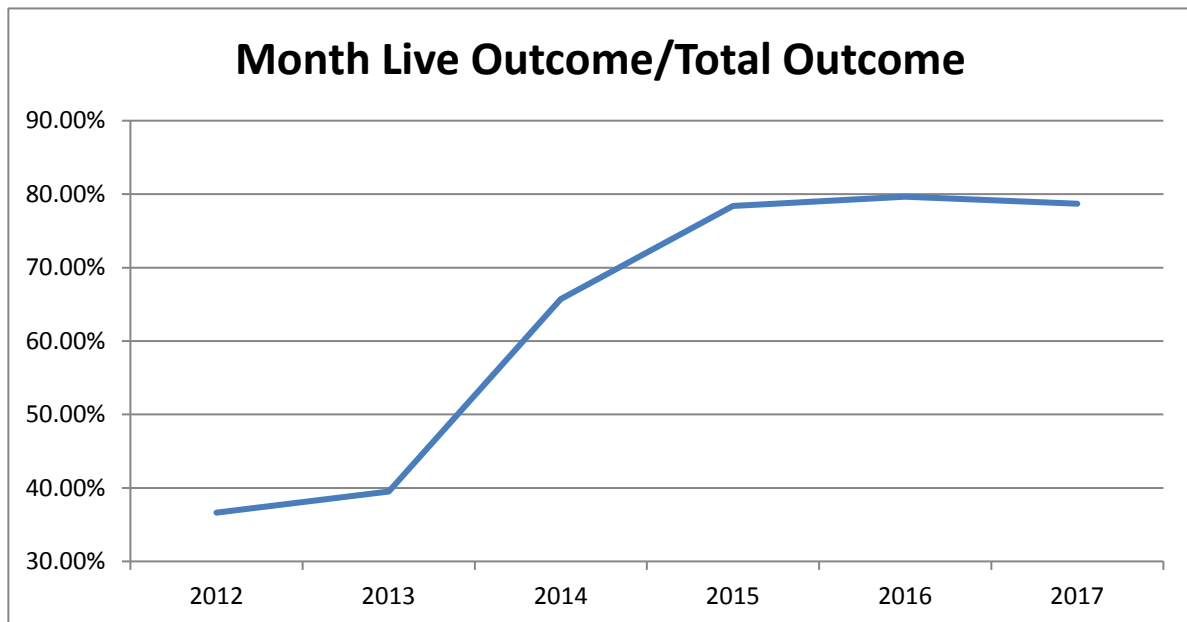
License Tag Sales

	FY14-15	FY15-16	FY16-17
October	\$144,685	\$116,482	\$116,985
November	\$108,896	\$130,315	\$136,977
December	\$149,347	\$162,215	\$154,211
January	\$135,602	\$96,636	\$158,793
February	\$149,452	\$129,493	\$109,638
March	\$189,842	\$166,242	\$184,382
April	\$149,040	\$148,546	\$154,458
May	\$161,296	\$168,534	\$176,606
June	\$175,953	\$137,223	
July	\$122,197	\$118,009	
August	\$69,040	\$162,870	
September	\$222,404	\$150,039	
FY Totals	\$1,777,754	\$1,686,604	\$1,192,050

* Current monthly figures are pre-verification with Clerk (may be adjusted)
 Due to accounting timing tag sales reporting lags one month

Comprehensive Monthly Statistical Report

	Last Year	Jun-16	TOTAL	Current	Jun-17	TOTAL	Change
	DOG	CAT		DOG	CAT		
INTAKE							
Owner Surrender	152	108	260	157	114	271	4.2%
Returns (adopt + rescues)	33	12	45	21	5	26	-42.2%
Stray Over the Counter	221	517	738	277	681	958	29.8%
Stray Impounded in Field	300	222	522	342	315	657	25.9%
Confiscated/Investigations	10	75	85	13	3	16	-81.2%
Abandoned & Transferred In	8	0	8	0	0	0	-100.0%
Born in Shelter	0	0	0	0	2	2	100.0%
LIVE INTAKE	724	934	1,658	810	1,120	1,930	16.4%
OUTCOME							
Adoption	394	324	718	448	410	858	19.5%
Returned to Owner	69	7	76	117	14	131	72.4%
Transfer to HSTB	78	15	93	93	3	96	3.2%
Sent to Rescue	86	168	254	69	244	313	23.2%
Community Cat Returns		100	100		65	65	-35.0%
Total Live Outcome	627	614	1,241	727	736	1,463	17.9%
Died in Custody/Transport	2	12	14	8	23	31	121.4%
Euthanasia	75	226	301	101	264	365	21.3%
Lost/Missing/Unaccounted For	1	1	2	0	0	0	-100.0%
Non-Live Outcome	78	239	317	109	287	396	24.9%
TOTAL OUTCOME	705	853	1,558	836	1,023	1,859	19.3%
Total Live Out/Total Out	88.94%	71.98%	79.65%	86.96%	71.95%	78.70%	
HSTB Kept Strays				98	129	227	
	2012	2013	2014	2015	2016	2017	
Live Outcome/Total Outcome	36.64%	39.50%	65.70%	78.40%	79.65%	78.70%	



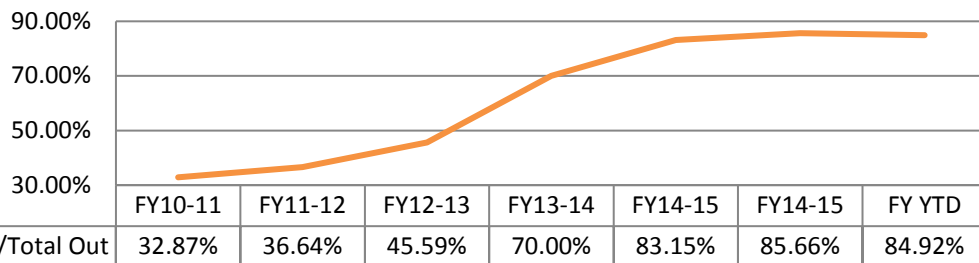
October 1st thru June 30th

	FY15-16			FY16-17			Change
	DOG	CAT	TOTAL	DOG	CAT	TOTAL	
INTAKE							
Owner Surrender	1,315	875	2,190	1,855	1,553	3,408	55.6%
Returns (adoption + rescue)	256	60	316	304	76	380	20.3%
Stray Over the Counter	1,972	2,842	4,814	2,218	3,533	5,751	19.5%
Stray Impounded in Field	2,154	1,245	3,399	2,421	1,804	4,225	24.3%
Confiscated/Investigations	182	105	287	249	19	268	-6.6%
Abandoned & Transferred In	90	0	90	2	2	4	-95.6%
Born in Shelter	3	5	8	0	11	11	37.5%
LIVE INTAKE	5,972	5,132	11,104	7,049	6,998	14,047	26.5%
OUTCOME							
Adoption	3,341	2,111	5,452	3,885	2,416	6,301	15.6%
Returned to Owner	724	57	781	975	96	1,071	37.1%
Sent to Rescue	1,337	1,299	2,636	1,445	2,070	3,515	33.3%
Community Cat Returns		601	601		795	795	32.3%
Total Live Outcome	5,402	4,068	9,470	6,305	5,377	11,682	23.4%
Died in Custody, Foster, Offsite	23	57	80	33	111	144	80.0%
Euthanasia	532	799	1,331	723	1,208	1,931	45.1%
Lost/Missing/Unaccounted For	1	6	7	0	0	0	-100.0%
Non-Live Outcome	556	862	1,418	756	1,319	2,075	46.3%
TOTAL OUTCOME	5,958	4,930	10,888	7,061	6,696	13,757	26.4%
Total Live Out/Total Out	90.67%	82.52%	86.98%	89.29%	80.30%	84.92%	

HSTB Kept Strays				728	726	1454
------------------	--	--	--	-----	-----	-------------

<i>FY Totals (Current FY is YTD)</i>	FY10-11	FY11-12	FY12-13	FY13-14	FY14-15	FY15-16	FY YTD
Total Live Intake	20,118	20,099	21,493	16,893	14,778	15,620	14,047
Live Outcome	6,624	7,340	10,021	11,707	12,833	12,917	11,682
Non Live Outcome	13,528	12,691	11,960	5,017	2,600	2,163	2,075
Total Outcome	20,152	20,031	21,981	16,724	15,433	15,080	13,757
	FY10-11	FY11-12	FY12-13	FY13-14	FY14-15	FY14-15	FY YTD
Total Live Out/Total Out	32.87%	36.64%	45.59%	70.00%	83.15%	85.66%	84.92%

Total Live Out/Total Out (FY Overall)



Affordable Sterilization Vouchers

	Redeemed	Issued	Expired
Oct-16	506	748	307
Nov-16	290	618	53
Dec-16	763	521	317
Jan-17	567	554	244
Feb-17	437	702	268
Mar-17	658	729	6
Apr-17	494	622	2
May-17	580	379	417
Jun-17	638	605	259
Jul-17			
Aug-17			
Sep-17			
FY Totals	4,933	5,478	1,873

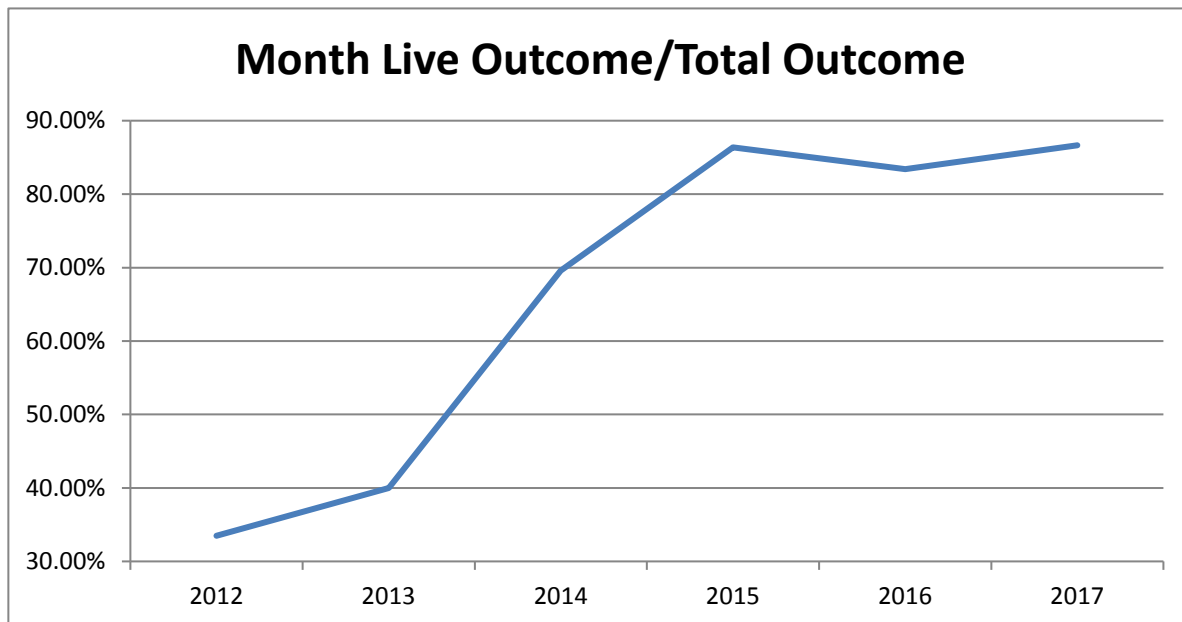
License Tag Sales

	FY14-15	FY15-16	FY16-17
October	\$144,685	\$116,482	\$116,985
November	\$108,896	\$130,315	\$136,977
December	\$149,347	\$162,215	\$154,211
January	\$135,602	\$96,636	\$158,793
February	\$149,452	\$129,493	\$109,638
March	\$189,842	\$166,242	\$184,382
April	\$149,040	\$148,546	\$154,458
May	\$161,296	\$168,534	\$176,606
June	\$175,953	\$137,223	\$146,251
July	\$122,197	\$118,009	
August	\$69,040	\$162,870	
September	\$222,404	\$150,039	
FY Totals	\$1,777,754	\$1,686,604	\$1,338,301

* Current monthly figures are pre-verification with Clerk (may be adjusted)
 Due to accounting timing tag sales reporting lags one month

Comprehensive Monthly Statistical Report

	Last Year	Jul-16	TOTAL	Current	Jul-17	TOTAL	Change
	DOG	CAT		DOG	CAT		
INTAKE							
Owner Surrender	185	103	288	118	145	263	-8.7%
Returns (adopt + rescues)	48	14	62	33	15	48	-22.6%
Stray Over the Counter	266	380	646	236	552	788	22.0%
Stray Impounded in Field	287	206	493	358	265	623	26.4%
Confiscated/Investigations	19	9	28	22	3	25	-10.7%
Abandoned & Transferred In	3	2	5	0	0	0	-100.0%
Born in Shelter	0	0	0	1	0	1	100.0%
LIVE INTAKE	808	714	1,522	768	980	1,748	14.8%
OUTCOME							
Adoption	476	276	752	481	533	1,014	34.8%
Returned to Owner	109	2	111	113	13	126	13.5%
Transfer to HSTB	58	16	74	132	1	133	79.7%
Sent to Rescue	65	156	221	67	233	300	35.7%
Community Cat Returns		88	88		193	193	119.3%
Total Live Outcome	708	538	1,246	793	973	1,766	41.7%
Died in Custody/Transport	2	14	16	1	14	15	-6.3%
Euthanasia	91	140	231	47	210	257	11.3%
Lost/Missing/Unaccounted For	1	0	1	0	0	0	-100.0%
Non-Live Outcome	94	154	248	48	224	272	9.7%
TOTAL OUTCOME	802	692	1,494	841	1,197	2,038	36.4%
Total Live Out/Total Out	88.28%	77.75%	83.40%	94.29%	81.29%	86.65%	
HSTB Kept Strays				133	87	220	
	2012	2013	2014	2015	2016	2017	
Live Outcome/Total Outcome	33.49%	39.97%	69.60%	86.38%	83.40%	86.65%	

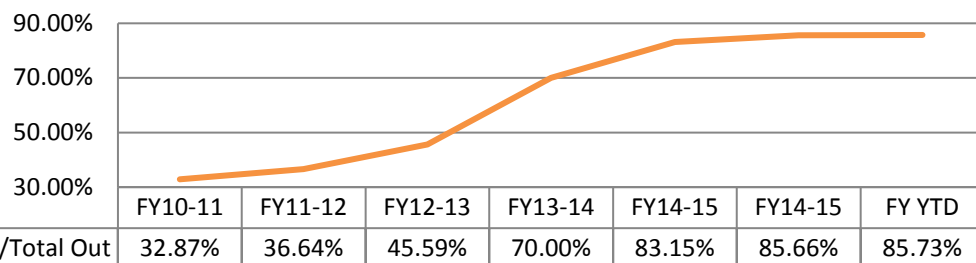


October 1st thru July 30th

	FY15-16			FY16-17			Change
	DOG	CAT	TOTAL	DOG	CAT	TOTAL	
INTAKE							
Owner Surrender	1,500	978	2,478	1,973	1,298	3,271	32.0%
Returns (adoption + rescue)	304	74	378	337	91	428	13.2%
Stray Over the Counter	2,238	3,222	5,460	2,454	4,085	6,539	19.8%
Stray Impounded in Field	2,441	1,451	3,892	2,779	2,069	4,848	24.6%
Confiscated/Investigations	201	114	315	271	22	293	-7.0%
Abandoned & Transferred In	93	2	95	2	2	4	-95.8%
Born in Shelter	3	5	8	1	11	12	50.0%
LIVE INTAKE	6,780	5,846	12,626	7,817	7,578	15,395	21.9%
OUTCOME							
Adoption	3,817	2,387	6,204	4,366	2,949	7,315	17.9%
Returned to Owner	833	59	892	1,088	109	1,197	34.2%
Sent to Rescue	1,460	1,471	2,931	1,644	2,304	3,948	34.7%
Community Cat Returns		689	689		988	988	43.4%
Total Live Outcome	6,110	4,606	10,716	7,098	6,350	13,448	25.5%
Died in Custody, Foster, Offsite	25	71	96	34	125	159	65.6%
Euthanasia	623	939	1,562	662	1,417	2,079	33.1%
Lost/Missing/Unaccounted For	2	6	8	0	0	0	-100.0%
Non-Live Outcome	650	1,016	1,666	696	1,542	2,238	34.3%
TOTAL OUTCOME	6,760	5,622	12,382	7,794	7,892	15,686	26.7%
Total Live Out/Total Out	90.38%	81.93%	86.54%	91.07%	80.46%	85.73%	
HSTB Kept Strays				763	684	1447	

<i>FY Totals (Current FY is YTD)</i>	FY10-11	FY11-12	FY12-13	FY13-14	FY14-15	FY15-16	FY YTD
Total Live Intake	20,118	20,099	21,493	16,893	14,778	15,620	15,395
Live Outcome	6,624	7,340	10,021	11,707	12,833	12,917	13,448
Non Live Outcome	13,528	12,691	11,960	5,017	2,600	2,163	238
Total Outcome	20,152	20,031	21,981	16,724	15,433	15,080	15,686
	FY10-11	FY11-12	FY12-13	FY13-14	FY14-15	FY14-15	FY YTD
Total Live Out/Total Out	32.87%	36.64%	45.59%	70.00%	83.15%	85.66%	85.73%

Total Live Out/Total Out (FY Overall)



Affordable Sterilization Vouchers

	Redeemed	Issued
Oct-16	506	748
Nov-16	290	618
Dec-16	763	521
Jan-17	567	554
Feb-17	437	702
Mar-17	658	729
Apr-17	494	622
May-17	580	379
Jun-17	638	605
Jul-17	247	508
Aug-17		
Sep-17		
FY Totals	5,180	5,986

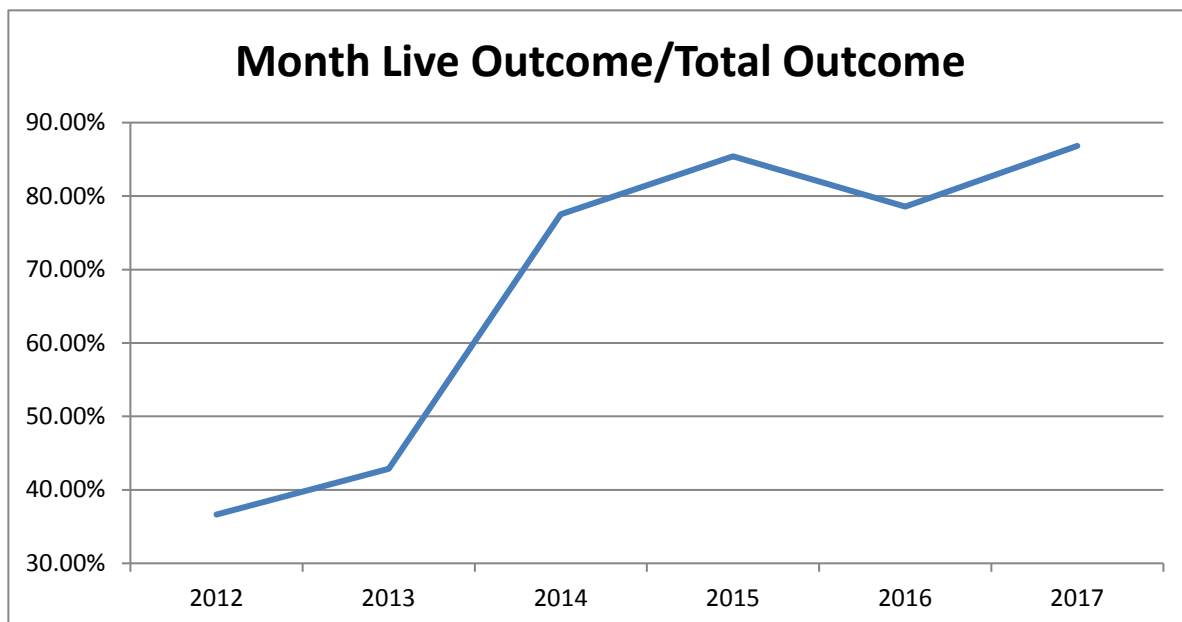
License Tag Sales

	FY14-15	FY15-16	FY16-17
October	\$144,685	\$116,482	\$116,985
November	\$108,896	\$130,315	\$136,977
December	\$149,347	\$162,215	\$154,211
January	\$135,602	\$96,636	\$158,793
February	\$149,452	\$129,493	\$109,638
March	\$189,842	\$166,242	\$184,382
April	\$149,040	\$148,546	\$154,458
May	\$161,296	\$168,534	\$176,606
June	\$175,953	\$137,223	\$146,250
July	\$122,197	\$118,009	\$159,902
August	\$69,040	\$162,870	
September	\$222,404	\$150,039	
FY Totals	\$1,777,754	\$1,686,604	\$1,498,202

* Current monthly figures are pre-verification with Clerk (may be adjusted)
 Due to accounting timing tag sales reporting lags one month

Comprehensive Monthly Statistical Report

	Last Year	Aug-16	TOTAL	Current	Aug-17	TOTAL	Change
	DOG	CAT		DOG	CAT		
INTAKE							
Owner Surrender	172	156	328	131	100	231	-29.6%
Returns (adopt + rescues)	37	7	44	51	11	62	40.9%
Stray Over the Counter	287	465	752	241	440	681	-9.4%
Stray Impounded in Field	279	189	468	370	284	654	39.7%
Confiscated/Investigations	25	9	34	65	27	92	170.6%
Abandoned & Transferred In	1	0	1	0	0	0	-100.0%
Born in Shelter	0	0	0	0	5	5	100.0%
LIVE INTAKE	801	826	1,627	858	867	1,725	6.0%
OUTCOME							
Adoption	416	251	667	412	399	811	21.6%
Returned to Owner	126	8	134	101	11	112	-16.4%
Transfer to HSTB	59	30	89	116	5	121	36.0%
Sent to Rescue	72	207	279	66	240	306	9.7%
Community Cat Returns		56	56		133	133	137.5%
Total Live Outcome	673	552	1,225	695	788	1,483	21.1%
Died in Custody/Transport	2	20	22	3	20	23	4.5%
Euthanasia	141	171	312	64	138	202	-35.3%
Lost/Missing/Unaccounted For	0	0	0	0	0	0	-100.0%
Non-Live Outcome	143	191	334	67	158	225	-32.6%
TOTAL OUTCOME	816	743	1,559	762	946	1,708	9.6%
Total Live Out/Total Out	82.48%	74.29%	78.58%	91.21%	83.30%	86.83%	
HSTB Kept Strays				118	85	203	
	2012	2013	2014	2015	2016	2017	
Live Outcome/Total Outcome	36.64%	42.88%	77.53%	85.40%	78.58%	86.83%	



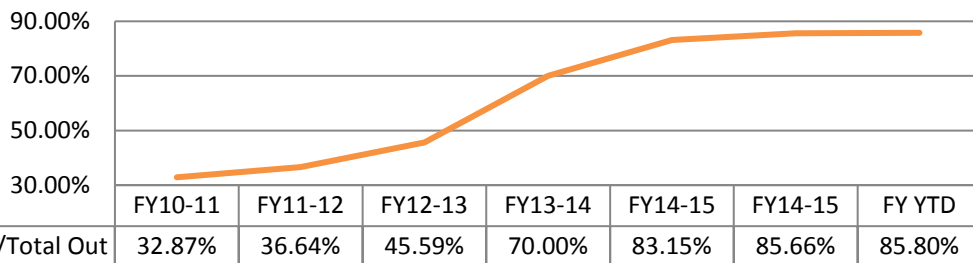
October 1st thru August 31st

	FY15-16			FY16-17			Change
	DOG	CAT	TOTAL	DOG	CAT	TOTAL	
INTAKE							
Owner Surrender	1,672	1,134	2,806	2,104	1,398	3,502	24.8%
Returns (adoption + rescue)	341	81	422	388	102	490	16.1%
Stray Over the Counter	2,526	3,687	6,213	2,695	4,525	7,220	16.2%
Stray Impounded in Field	2,719	1,640	4,359	3,149	2,353	5,502	26.2%
Confiscated/Investigations	227	123	350	336	49	385	10.0%
Abandoned & Transferred In	92	2	94	2	2	4	-95.7%
Born in Shelter	3	5	8	1	16	17	112.5%
LIVE INTAKE	7,580	6,672	14,252	8,675	8,445	17,120	20.1%
OUTCOME							
Adoption	4,233	2,639	6,872	4,778	3,348	8,126	18.2%
Returned to Owner	958	68	1,026	1,189	120	1,309	27.6%
Sent to Rescue	1,568	1,690	3,258	1,826	2,549	4,375	34.3%
Community Cat Returns		764	764		1,121	1,121	46.7%
Total Live Outcome	6,759	5,161	11,920	7,793	7,138	14,931	25.3%
Died in Custody, Foster, Offsite	27	92	119	37	145	182	52.9%
Euthanasia	763	1,110	1,873	734	1,556	2,290	22.3%
Lost/Missing/Unaccounted For	2	7	9	0	0	0	-100.0%
Non-Live Outcome	792	1,209	2,001	771	1,701	2,472	23.5%
TOTAL OUTCOME	7,551	6,370	13,921	8,564	8,839	17,403	25.0%
Total Live Out/Total Out	89.51%	81.02%	85.63%	91.00%	80.76%	85.80%	

HSTB Kept Strays				881	769	1650
------------------	--	--	--	-----	-----	-------------

<i>FY Totals (Current FY is YTD)</i>	FY10-11	FY11-12	FY12-13	FY13-14	FY14-15	FY15-16	FY YTD
Total Live Intake	20,118	20,099	21,493	16,893	14,778	15,620	17,120
Live Outcome	6,624	7,340	10,021	11,707	12,833	12,917	14,931
Non Live Outcome	13,528	12,691	11,960	5,017	2,600	2,163	2,472
Total Outcome	20,152	20,031	21,981	16,724	15,433	15,080	17,403
	FY10-11	FY11-12	FY12-13	FY13-14	FY14-15	FY14-15	FY YTD
Total Live Out/Total Out	32.87%	36.64%	45.59%	70.00%	83.15%	85.66%	85.80%

Total Live Out/Total Out (FY Overall)



Affordable Sterilization Vouchers

	Redeemed	Issued
Oct-16	506	748
Nov-16	290	618
Dec-16	763	521
Jan-17	567	554
Feb-17	437	702
Mar-17	658	729
Apr-17	494	622
May-17	580	379
Jun-17	638	605
Jul-17	247	508
Aug-17	536	694
Sep-17		
FY Totals	5,716	6,680

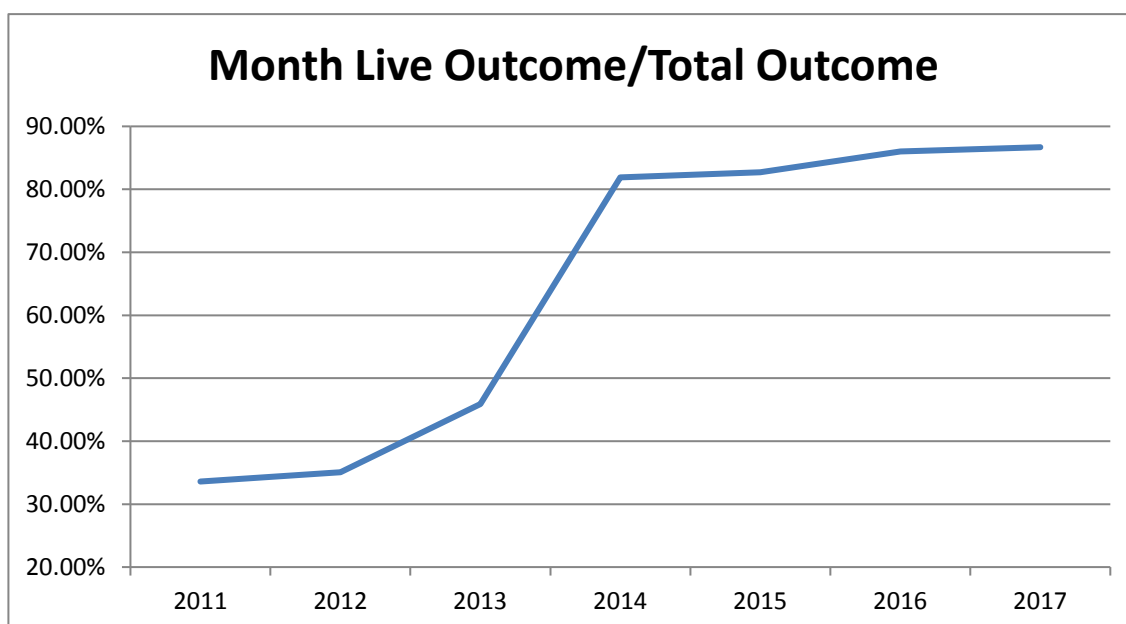
License Tag Sales

	FY14-15	FY15-16	FY16-17
October	\$144,685	\$116,482	\$116,985
November	\$108,896	\$130,315	\$136,977
December	\$149,347	\$162,215	\$154,211
January	\$135,602	\$96,636	\$158,793
February	\$149,452	\$129,493	\$109,638
March	\$189,842	\$166,242	\$184,382
April	\$149,040	\$148,546	\$154,458
May	\$161,296	\$168,534	\$176,606
June	\$175,953	\$137,223	\$146,250
July	\$122,197	\$118,009	\$159,902
August	\$69,040	\$162,870	\$252,000
September	\$222,404	\$150,039	
FY Totals	\$1,777,754	\$1,686,604	\$1,750,202

* Current monthly figures are pre-verification with Clerk (may be adjusted)
 Due to accounting timing tag sales reporting lags one month

Monthly Data

	Last Year			Current			Change
	DOG	CAT	TOTAL	DOG	CAT	TOTAL	
INTAKE							
Owner Surrender	153	71	224	121	87	208	-7.1%
Returns (adopt + rescue)	28	12	40	16	9	25	-37.5%
Stray Over the Counter	235	403	638	180	416	596	-6.6%
Stray Impounded in Field	235	206	441	331	170	501	13.6%
Confiscated/Investigations	21	2	23	24	7	31	34.8%
Abandoned & Transferred In	0	2	2	0	0	0	-100.0%
Born in Shelter	0	0	0	0	0	0	*
LIVE INTAKE	672	696	1,368	672	689	1,361	-0.5%
OUTCOME							
Adoption	434	260	694	307	267	574	-17.3%
Returned to Owner	76	10	86	81	5	86	0.0%
Transfer to HSTB	90	19	109	57	23	80	-26.6%
Sent to Rescue	9	14	23	123	185	308	1239.1%
Community Cat Returns		85	85		79	79	-7.1%
Total Live Outcome	609	388	997	568	559	1,127	13.0%
Died in Custody/Transport	0	16	16	1	11	12	-25.0%
Euthanasia	51	94	145	45	116	161	11.0%
Lost/Missing/Unaccounted For	0	1	1	0	0	0	-100.0%
Non-Live Outcome	51	111	162	46	127	173	6.8%
TOTAL OUTCOME	660	499	1,159	614	686	1,300	12.2%
Total Live Out/Total Out	92.27%	77.76%	86.02%	92.51%	81.49%	86.69%	
HSTB Kept Strays				83	112	195	
Monthly Comparisons	2011	2012	2013	2014	2015	2016	2017
Live Outcome/Total Outcome	33.59%	35.07%	45.90%	81.90%	82.70%	86.02%	86.69%

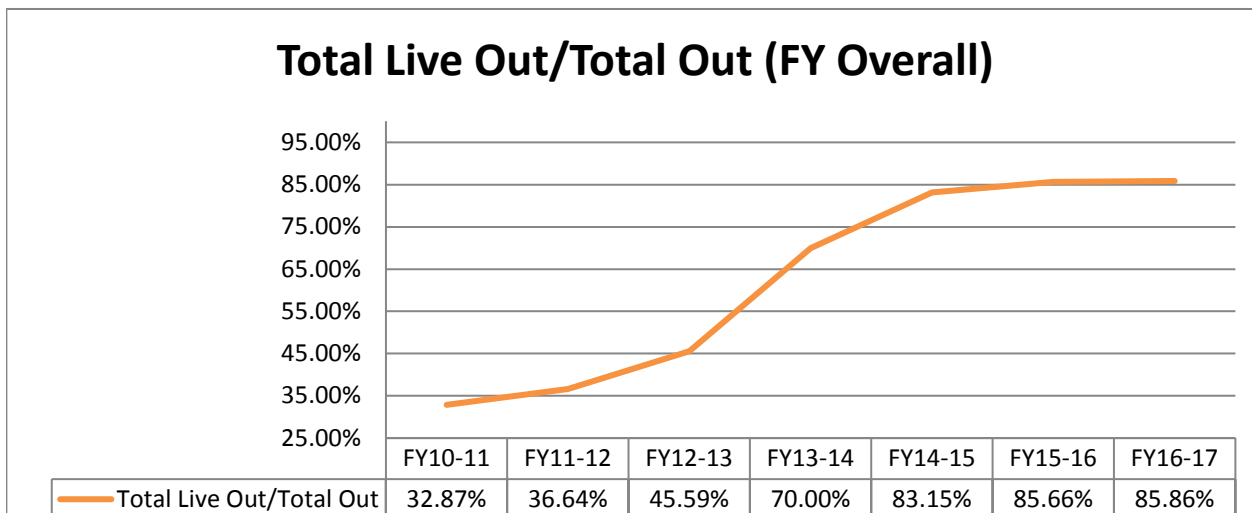


October 1st - September 30th
COMPLETED FISCAL YEAR

	FY15-16			FY16-17			Change
	DOG	CAT	TOTAL	DOG	CAT	TOTAL	
INTAKE							
Owner Surrender	1,825	1,205	3,030	2,225	1,485	3,710	22.4%
Returns (adopt + rescue)	369	93	462	404	111	515	11.5%
Stray Over the Counter	2,761	4,090	6,851	2,875	4,941	7,816	14.1%
Stray Impounded in Field	2,954	1,846	4,800	3,480	2,523	6,003	25.1%
Confiscated/Investigations	248	125	373	360	56	416	11.5%
Abandoned & Transferred In	92	4	96	2	2	4	-95.8%
Born in Shelter	3	5	8	1	16	17	112.5%
LIVE INTAKE	8,252	7,368	15,620	9,347	9,134	18,481	18.3%
OUTCOME							
Adoption	4,667	2,899	7,566	5,085	3,615	8,700	15.0%
Returned to Owner	1,034	78	1,112	1,270	125	1,395	25.4%
Sent to Rescue or Shelter	1,667	1,723	3,390	2,006	2,757	4,763	40.5%
Community Cat Returns		849	849		1,200	1,200	41.3%
Total Live Outcome	7,368	5,549	12,917	8,361	7,697	16,058	24.3%
Died in Custody, Foster, Offsite	27	108	135	38	156	194	43.7%
Euthanasia	814	1,204	2,018	779	1,672	2,451	21.5%
Lost/Missing/Unaccounted For	2	8	10	0	0	0	-100.0%
Non-Live Outcome	843	1,320	2,163	817	1,828	2,645	22.3%
TOTAL OUTCOME	8,211	6,869	15,080	9,178	9,525	18,703	24.0%
Total Live Out/Total Out	89.73%	80.78%	85.66%	91.10%	80.81%	85.86%	

<i>FY Totals (Current FY is YTD)</i>	FY10-11	FY11-12	FY12-13	FY13-14	FY14-15	FY15-16	FY16-17
Total Live Intake	20,118	20,099	21,493	16,893	14,778	15,620	18,481
Live Outcome	6,624	7,340	10,021	11,707	12,833	12,917	16,058
Non Live Outcome	13,528	12,691	11,960	5,017	2,600	2,163	2,645
Total Outcome	20,152	20,031	21,981	16,724	15,433	15,080	18,703
	FY10-11	FY11-12	FY12-13	FY13-14	FY14-15	FY15-16	FY16-17
Total Live Out/Total Out	32.87%	36.64%	45.59%	70.00%	83.15%	85.66%	85.86%

HSTB Kept Strays			964	881	1845
------------------	--	--	-----	-----	------



Affordable Sterilization Vouchers

	Redeemed	Issued
Oct-16	506	748
Nov-16	290	618
Dec-16	763	521
Jan-17	567	554
Feb-17	437	702
Mar-17	658	729
Apr-17	494	622
May-17	580	379
Jun-17	638	605
Jul-17	247	508
Aug-17	536	694
Sep-17	315	457
FY Totals	6,031	7,137

84.50%

License Tag Sales

	FY14-15	FY15-16	FY16-17
October	\$144,685	\$116,482	\$116,985
November	\$108,896	\$130,315	\$136,977
December	\$149,347	\$162,215	\$154,211
January	\$135,602	\$96,636	\$158,793
February	\$149,452	\$129,493	\$109,638
March	\$189,842	\$166,242	\$184,382
April	\$149,040	\$148,546	\$154,458
May	\$161,296	\$168,534	\$176,606
June	\$175,953	\$137,223	\$146,250
July	\$122,197	\$118,009	\$159,902
August	\$69,040	\$162,870	\$252,675
September	\$222,404	\$149,187	\$158,507
FY Totals	\$1,777,754	\$1,685,752	\$1,909,384

13.27%

* Current monthly figures are pre-verification with Clerk (may be adjusted)
 Due to accounting timing tag sales reporting lags one month