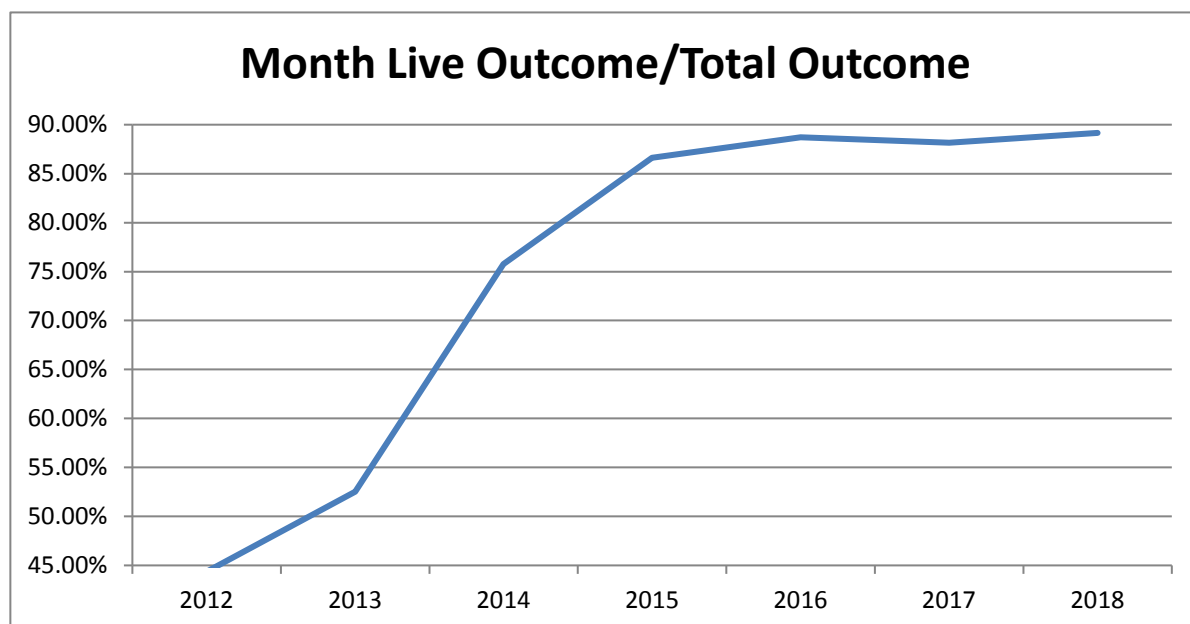


	Last Year	Mar-17	TOTAL	Current	Mar-18	TOTAL	Change
	DOG	CAT		DOG	CAT		
INTAKE							
Owner Surrender	230	219	449	172	95	267	-40.5%
Returns	57	5	62	41	15	56	-9.7%
Stray Over the Counter	147	188	335	60	177	237	-29.3%
Stray Impounded in Field	272	199	471	246	266	512	8.7%
Confiscated/Investigations	16	7	23	27	1	28	21.7%
Abandoned & Transferred In	0	0	0	0	1	1	100.0%
Born in Shelter	0	0	0	0	7	7	100.0%
LIVE INTAKE	722	618	1,340	546	562	1,108	-17.3%
OUTCOME							
Adoption	420	226	646	412	315	727	12.5%
Returned to Owner	137	10	147	77	8	85	-42.2%
Sent to Rescue	111	146	257	4	103	107	-58.4%
Community Cat Returns		111	111		68	68	-38.7%
Total Live Outcome	668	493	1,161	493	494	987	-15.0%
Died in Custody/Transport	2	1	3	3	3	6	100.0%
Euthanasia	76	77	153	41	73	114	-25.5%
Lost/Missing/Unaccounted For	0	0	0	0	0	0	*
Non-Live Outcome	78	78	156	44	76	120	-23.1%
TOTAL OUTCOME	746	571	1,317	537	570	1,107	-15.9%
Total Live Out/Total Out	89.54%	86.34%	88.15%	91.81%	86.67%	89.16%	
HSTB Kept Strays & Transfers*	84	38	122	139	5	144	

* These figures are not included above in the intake or outcome totals

Monthly Comparisons	2012	2013	2014	2015	2016	2017	2018
Live Outcome/Total Outcome	44.36%	52.54%	75.78%	86.62%	88.70%	88.15%	89.16%

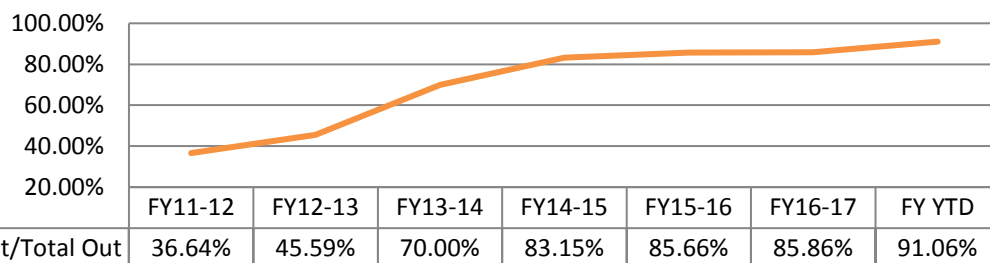


October 1st thru March 31st

	FY16-17			FY17-18			Change
	DOG	CAT	TOTAL	DOG	CAT	TOTAL	
INTAKE							
Owner Surrender	1,154	843	1,997	790	616	1,406	-29.6%
Returns	201	59	260	210	60	270	3.8%
Stray Over the Counter	1,002	1,719	2,721	979	1,641	2,620	-3.7%
Stray Impounded in Field	1,569	989	2,558	1,636	1,277	2,913	13.9%
Confiscated/Investigations	140	10	150	144	62	206	37.3%
Abandoned & Transferred In	0	0	0	1	1	2	100.0%
Born in Shelter	0	0	0	18	11	29	100.0%
LIVE INTAKE	4,066	3,620	7,686	3,778	3,668	7,446	-3.1%
OUTCOME							
Adoption	2,544	1,629	4,173	2,270	2,067	4,337	3.9%
Returned to Owner	695	60	755	499	61	560	-25.8%
Sent to Rescue	403	1,196	1,599	866	1,107	1,973	23.4%
Community Cat Returns		600	600		624	624	4.0%
Total Live Outcome	3,642	3,485	7,127	3,635	3,859	7,494	5.1%
Died in Custody, Foster, Offsite	19	59	78	17	78	95	21.8%
Euthanasia	374	608	982	231	410	641	-34.7%
Lost/Missing/Unaccounted For	0	0	0	0	0	0	*
Non-Live Outcome	393	667	1,060	248	488	736	-30.6%
TOTAL OUTCOME	4,035	4,152	8,187	3,883	4,347	8,230	0.5%
Total Live Out/Total Out	90.26%	83.94%	87.05%	93.61%	88.77%	91.06%	
HSTB Kept Strays & Transfers*	470	204	674	768	94	862	

<i>FY Totals (Current FY is YTD)</i>	FY11-12	FY12-13	FY13-14	FY14-15	FY15-16	FY16-17	FY YTD
Total Live Intake	20,099	21,493	16,893	14,778	15,620	18,481	6,481
Live Outcome	7,340	10,021	11,707	12,833	12,917	16,058	7,494
Non Live Outcome	12,691	11,960	5,017	2,600	2,163	2,645	736
Total Outcome	20,031	21,981	16,724	15,433	15,080	18,703	8,230
	FY11-12	FY12-13	FY13-14	FY14-15	FY15-16	FY16-17	FY YTD
Total Live Out/Total Out	36.64%	45.59%	70.00%	83.15%	85.66%	85.86%	91.06%

Total Live Out/Total Out (FY Overall)



* These figures are not included above in the intake or outcome totals

Affordable Sterilization Vouchers

	Redeemed	Issued
Oct-17	380	670
Nov-17	641	588
Dec-17	443	376
Jan-18	496	525
Feb-18	267	608
Mar-18	458	661
Apr-18		
May-18		
Jun-18		
Jul-18		
Aug-18		
Sep-18		
FY Totals	2,685	3,428

License Tag Sales

	FY14-15	FY15-16	FY16-17	FY17-18
October	\$144,685	\$116,482	\$116,985	\$164,556
November	\$108,896	\$130,315	\$136,977	\$182,802
December	\$149,347	\$162,215	\$154,211	\$145,078
January	\$135,602	\$96,636	\$158,793	\$178,753
February	\$149,452	\$129,493	\$109,638	\$143,526
March	\$189,842	\$166,242	\$184,382	\$180,889
April	\$149,040	\$148,546	\$154,458	
May	\$161,296	\$168,534	\$176,606	
June	\$175,953	\$137,223	\$146,250	
July	\$122,197	\$118,009	\$159,902	
August	\$69,040	\$162,870	\$252,675	
September	\$222,404	\$150,039	\$158,507	
FY Totals	\$1,777,754	\$1,686,604	\$1,909,384	\$995,604

* Current monthly figures are pre-verification with Clerk (may be adjusted)