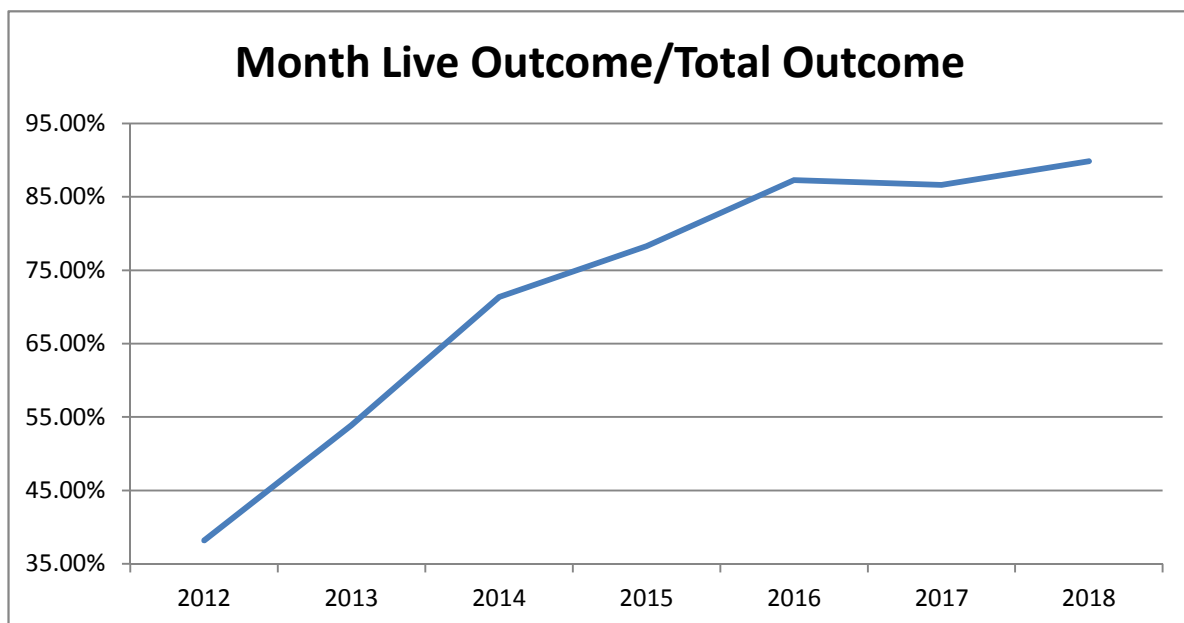


	Last Year DOG	Apr-17 CAT	TOTAL	Current DOG	Apr-17 CAT	TOTAL	Change
<b>INTAKE</b>							
Owner Surrender	302	91	<b>393</b>	164	85	<b>249</b>	-36.6%
Returns	35	7	<b>42</b>	50	2	<b>52</b>	23.8%
Stray Over the Counter	216	354	<b>570</b>	158	320	<b>478</b>	-16.1%
Stray Impounded in Field	211	240	<b>451</b>	227	414	<b>641</b>	42.1%
Confiscated/Investigations	82	1	<b>83</b>	32	28	<b>60</b>	-27.7%
Abandoned & Transferred In	0	0	<b>0</b>	0	0	<b>0</b>	0.0%
Born in Shelter	0	5	<b>5</b>	0	6	<b>6</b>	20.0%
<b>LIVE INTAKE</b>	<b>846</b>	<b>698</b>	<b>1,544</b>	<b>631</b>	<b>855</b>	<b>1,486</b>	<b>-3.8%</b>
<b>OUTCOME</b>							
Adoption	434	165	<b>599</b>	441	340	<b>781</b>	30.4%
Returned to Owner	76	16	<b>92</b>	92	4	<b>96</b>	4.3%
Transfer to HSTB	86	23	<b>109</b>	44	0	<b>44</b>	-59.6%
Sent to Rescue	154	143	<b>297</b>	2	204	<b>206</b>	-30.6%
Community Cat Returns		80	<b>80</b>		85	<b>85</b>	6.3%
<b>Total Live Outcome</b>	<b>750</b>	<b>427</b>	<b>1,177</b>	<b>579</b>	<b>633</b>	<b>1,212</b>	3.0%
Died in Custody/Transport	4	11	<b>15</b>	3	10	<b>13</b>	-13.3%
Euthanasia	67	100	<b>167</b>	46	77	<b>123</b>	-26.3%
Lost/Missing/Unaccounted For	0	0	<b>0</b>	0	1	<b>1</b>	100.0%
<b>Non-Live Outcome</b>	<b>71</b>	<b>111</b>	<b>182</b>	<b>49</b>	<b>88</b>	<b>137</b>	<b>-24.7%</b>
<b>TOTAL OUTCOME</b>	<b>821</b>	<b>538</b>	<b>1,359</b>	<b>628</b>	<b>721</b>	<b>1,349</b>	<b>-0.7%</b>
Total Live Out/Total Out	91.35%	79.37%	86.61%	92.20%	87.79%	89.84%	
HSTB Kept Strays**	67	84	<b>151</b>	66	8	<b>74</b>	
** These figures are not included in the above chart of PRC handled animals							
Monthly Comparisons	2012	2013	2014	2015	2016	2017	2018
Live Outcome/Total Outcome	38.21%	53.90%	71.33%	78.26%	87.25%	86.61%	89.84%



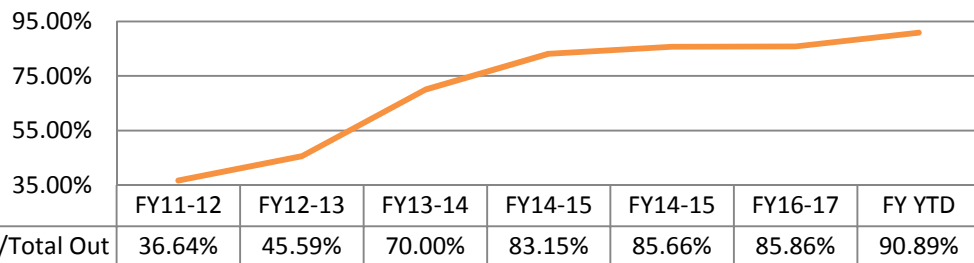
October 1st thru April 30th

	FY16-17			FY17-18			Change
	DOG	CAT	TOTAL	DOG	CAT	TOTAL	
<b>INTAKE</b>							
Owner Surrender	1,456	934	<b>2,390</b>	954	701	<b>1,655</b>	-30.8%
Returns	236	66	<b>302</b>	260	62	<b>322</b>	6.6%
Stray Over the Counter	1,688	2,277	<b>3,965</b>	1,137	1,961	<b>3,098</b>	-21.9%
Stray Impounded in Field	1,780	1,229	<b>3,009</b>	1,863	1,691	<b>3,554</b>	18.1%
Confiscated/Investigations	222	11	<b>233</b>	176	90	<b>266</b>	14.2%
Abandoned & Transferred In	0	1	<b>1</b>	1	1	<b>2</b>	100.0%
Born in Shelter	0	5	<b>5</b>	18	17	<b>35</b>	600.0%
<b>LIVE INTAKE</b>	<b>5,382</b>	<b>4,523</b>	<b>9,905</b>	<b>4,409</b>	<b>4,523</b>	<b>8,932</b>	-9.8%
<b>OUTCOME</b>							
Adoption	2,978	1,794	<b>4,772</b>	2,711	2,407	<b>5,118</b>	7.3%
Returned to Owner	771	76	<b>847</b>	591	65	<b>656</b>	-22.6%
Sent to Rescue	600	1,163	<b>1,763</b>	912	1,311	<b>2,223</b>	26.1%
Community Cat Returns		680	<b>680</b>		709	<b>709</b>	4.3%
<b>Total Live Outcome</b>	<b>4,349</b>	<b>3,713</b>	<b>8,062</b>	<b>4,214</b>	<b>4,492</b>	<b>8,706</b>	8.0%
Died in Custody, Foster, Offsite	23	70	<b>93</b>	20	88	<b>108</b>	16.1%
Euthanasia	441	708	<b>1,149</b>	277	487	<b>764</b>	-33.5%
Lost/Missing/Unaccounted For	0	0	<b>0</b>	0	1	<b>1</b>	100.0%
<b>Non-Live Outcome</b>	<b>464</b>	<b>778</b>	<b>1,242</b>	<b>297</b>	<b>576</b>	<b>873</b>	-29.7%
<b>TOTAL OUTCOME</b>	<b>4,813</b>	<b>4,491</b>	<b>9,304</b>	<b>4,511</b>	<b>5,068</b>	<b>9,579</b>	3.0%
Total Live Out/Total Out	90.36%	82.68%	86.65%	93.42%	88.63%	90.89%	
HSTB Kept Strays**	513	403	<b>916</b>	854	102	<b>956</b>	

\*\* These figures are not included in the above chart of PRC handled animals

<i>FY Totals (Current FY is YTD)</i>	FY11-12	FY12-13	FY13-14	FY14-15	FY15-16	FY16-17	FY YTD
Total Live Intake	20,099	21,493	16,893	14,778	15,620	18,481	8,932
Live Outcome	7,340	10,021	11,707	12,833	12,917	16,058	8,706
Non Live Outcome	12,691	11,960	5,017	2,600	2,163	2,645	873
Total Outcome	20,031	21,981	16,724	15,433	15,080	18,703	9,579
	FY11-12	FY12-13	FY13-14	FY14-15	FY14-15	FY16-17	FY YTD
Total Live Out/Total Out	36.64%	45.59%	70.00%	83.15%	85.66%	85.86%	90.89%

### Total Live Out/Total Out (FY Overall)



Affordable Sterilization Vouchers

	<b>Redeemed</b>	<b>Issued</b>
Oct-17	380	670
Nov-17	641	588
Dec-17	443	376
Jan-18	496	525
Feb-18	267	608
Mar-18	458	661
Apr-18	546	526
May-18		
Jun-18		
Jul-18		
Aug-18		
Sep-18		
<b>FY Totals</b>	<b>3,231</b>	<b>3,954</b>

License Tag Sales

	<b>FY14-15</b>	<b>FY15-16</b>	<b>FY16-17</b>	<b>FY17-18</b>
October	\$144,685	\$116,482	\$116,985	\$164,556
November	\$108,896	\$130,315	\$136,977	\$182,802
December	\$149,347	\$162,215	\$154,211	\$145,078
January	\$135,602	\$96,636	\$158,793	\$178,753
February	\$149,452	\$129,493	\$109,638	\$143,526
March	\$189,842	\$166,242	\$184,382	\$180,889
April	\$149,040	\$148,546	\$154,458	\$179,248
May	\$161,296	\$168,534	\$176,606	
June	\$175,953	\$137,223	\$146,250	
July	\$122,197	\$118,009	\$159,902	
August	\$69,040	\$162,870	\$252,675	
September	\$222,404	\$150,039	\$158,507	
<b>FY Totals</b>	<b>\$1,777,754</b>	<b>\$1,686,604</b>	<b>\$1,909,384</b>	<b>\$1,174,852</b>

\* Current monthly figures are pre-verification with Clerk (may be adjusted)