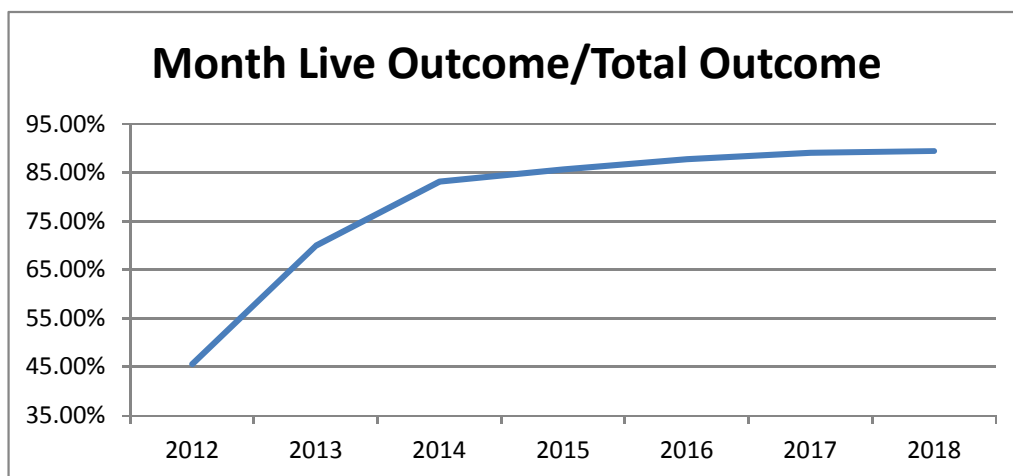


Monthly Data

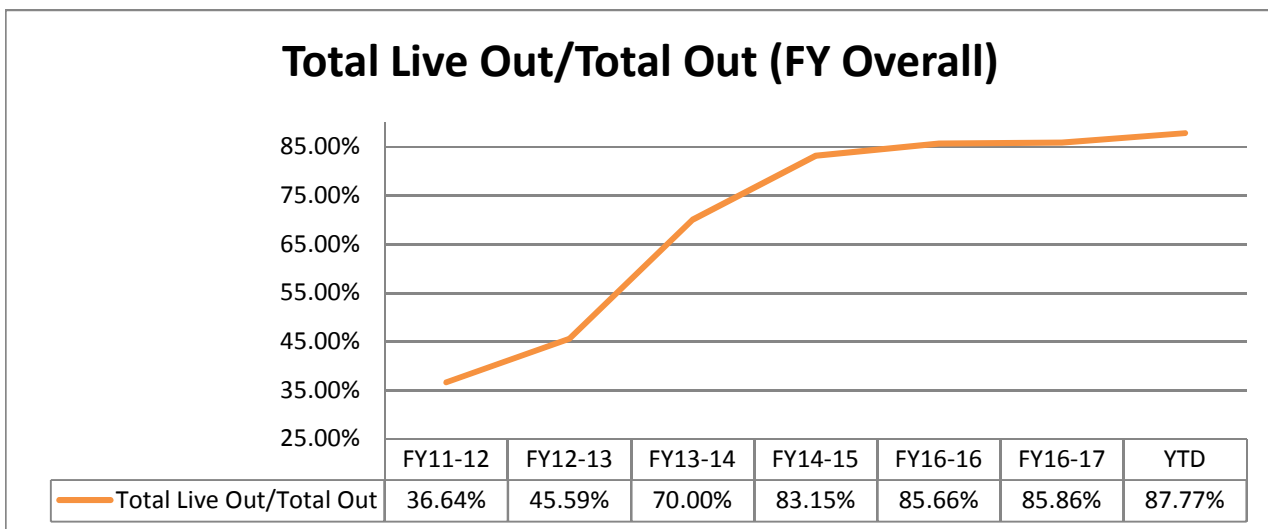
	Last Year	Dec-17	TOTAL	Current	Dec-18	TOTAL	Change
	DOG	CAT		DOG	CAT		
INTAKE							
Owner Surrender	159	108	267	112	78	190	-28.8%
Returns (adopt + rescue)	21	14	35	20	3	23	-34.3%
Stray Over the Counter	208	272	480	182	360	542	12.9%
Stray Impounded in Field	259	164	423	150	64	214	-49.4%
Confiscated/Investigations	25	0	25	9	3	12	-52.0%
Abandoned & Transferred In	0	0	0	3	0	3	*
Born in Shelter	0	0	0	0	0	0	*
LIVE INTAKE	672	558	1,230	476	508	984	-20.0%
OUTCOME							
Adoption	349	385	734	337	437	774	5.4%
Returned to Owner	95	7	102	82	4	86	-15.7%
Transfer to HSTB	128	1	129	7	15	22	-82.9%
Sent to Rescue	53	182	235	2	3	5	-97.9%
Community Cat Returns		90	90		65	65	-27.8%
Total Live Outcome	625	665	1,290	428	524	952	-26.2%
Died in Custody/Transport	0	11	11	2	8	10	-9.1%
Euthanasia	40	49	89	38	64	102	14.6%
Lost/Missing/Unaccounted For	0	0	0	0	0	0	*
Non-Live Outcome	40	60	100	40	72	112	12.0%
TOTAL OUTCOME	665	725	1,390	468	596	1,064	-23.5%
Total Live Out/Total Out	93.98%	91.72%	92.81%	91.45%	87.92%	89.47%	
HSTB Kept Strays	62	108	170	127	7	134	
Monthly Comparisons	2012	2013	2014	2015	2016	2017	2018
Live Outcome/Total Outcome	45.59%	70.00%	83.15%	85.66%	87.80%	89.11%	89.47%



October 1st - December 31st

	FY17-18			FY18-19			Change
	DOG	CAT	TOTAL	DOG	CAT	TOTAL	
INTAKE							
Owner Surrender	398	342	740	334	224	558	-24.6%
Returns (adopt + rescue)	88	31	119	83	17	100	-16.0%
Stray Over the Counter	547	1,064	1,611	500	1,253	1,753	8.8%
Stray Impounded in Field	847	628	1,475	547	306	853	-42.2%
Confiscated/Investigations	76	46	122	59	13	72	-41.0%
Abandoned & Transferred In	1	0	1	6	0	6	*
Born in Shelter	7	4	11	0	2	2	*
LIVE INTAKE	1,964	2,115	4,079	1,529	1,815	3,344	-18.0%
OUTCOME							
Adoption	1,084	1,047	2,131	1,128	1,530	2,658	24.7%
Returned to Owner	259	28	287	259	13	272	-5.2%
Sent to Rescue or Shelter	207	733	940	49	144	193	-79.5%
Community Cat Returns		354	354		258	258	-27.1%
Total Live Outcome	1,550	2,162	3,712	1,436	1,945	3,381	-8.9%
Died in Custody, Foster, Offsite	8	68	76	7	29	36	-52.6%
Euthanasia	113	249	362	139	296	435	20.2%
Lost/Missing/Unaccounted For	0	0	0	0	0	0	*
Non-Live Outcome	121	317	438	146	325	471	7.5%
TOTAL OUTCOME	1,671	2,479	4,150	1,582	2,270	3,852	-7.2%
Total Live Out/Total Out	92.76%	87.21%	89.45%	90.77%	85.68%	87.77%	

<i>FY Totals (Current FY is YTD)</i>	FY11-12	FY12-13	FY13-14	FY14-15	FY15-16	FY16-17	YTD
Total Live Intake	20,099	21,493	16,893	14,778	15,620	18,481	3,344
Live Outcome	7,340	10,021	11,707	12,833	12,917	16,058	3,381
Non Live Outcome	12,691	11,960	5,017	2,600	2,163	2,645	471
Total Outcome	20,031	21,981	16,724	15,433	15,080	18,703	3,852
	FY11-12	FY12-13	FY13-14	FY14-15	FY16-16	FY16-17	YTD
Total Live Out/Total Out	36.64%	45.59%	70.00%	83.15%	85.66%	85.86%	87.77%



Figures do not include close to 2000 stray pets taken in by HSTB and not transferred to PRC

Affordable Sterilization Vouchers

	Redeemed	Issued
Oct-18	65	726 **
Nov-18	809	617
Dec-18	262	429
Jan-19		
Feb-19		
Mar-19		
Apr-19		
May-19		
Jun-19		
Jul-19		
Aug-19		
Sep-19		
FY Totals	1,136	1,772

License Tag Sales

	FY14-15	FY15-16	FY16-17	FY17-18	FY18-19
October	\$144,685	\$116,482	\$116,985	\$164,556	\$164,505
November	\$108,896	\$130,315	\$136,977	\$182,802	\$148,317
December	\$149,347	\$162,215	\$154,211	\$145,078	\$81,098
January	\$135,602	\$96,636	\$158,793	\$178,753	
February	\$149,452	\$129,493	\$109,638	\$143,526	
March	\$189,842	\$166,242	\$184,382	\$180,889	
April	\$149,040	\$148,546	\$154,458	\$204,569	
May	\$161,296	\$168,534	\$176,606	\$207,145	
June	\$175,953	\$137,223	\$146,250	\$202,219	
July	\$122,197	\$118,009	\$159,902	\$199,203	
August	\$69,040	\$162,870	\$252,675	\$191,904	
September	\$222,404	\$150,039	\$158,507	\$173,280	
FY Totals	\$1,777,754	\$1,686,604	\$1,909,384	\$2,173,924	

* Current monthly figures are pre-verification with Clerk (may be adjusted)

** Employee on leave that processes vouchers