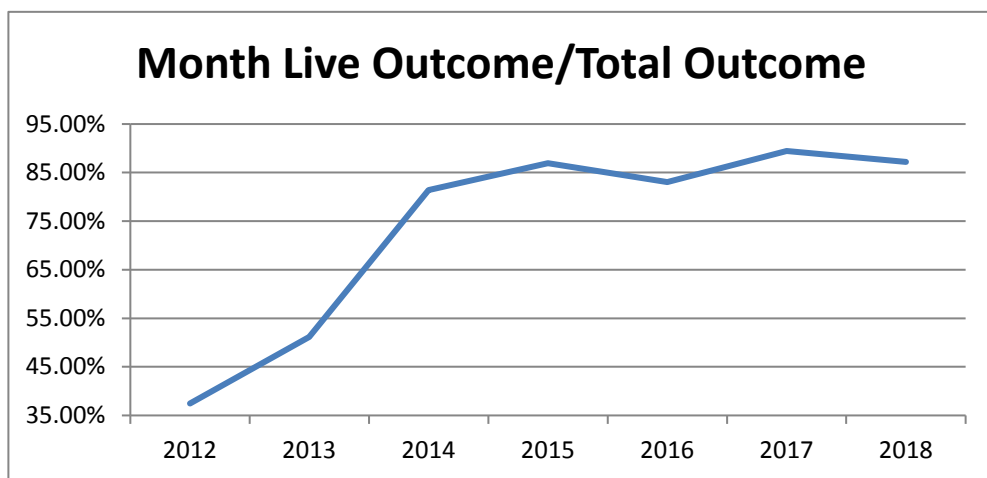


Monthly Data

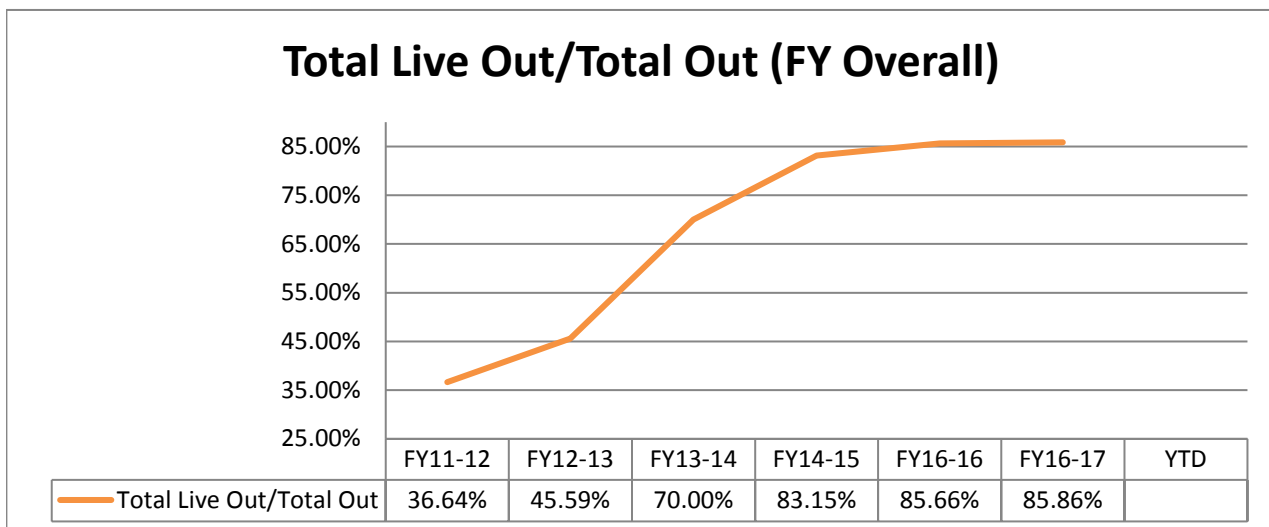
	Last Year			Current			Change
	DOG	CAT	TOTAL	DOG	CAT	TOTAL	
INTAKE							
Owner Surrender	123	159	282	122	71	193	-31.6%
Returns (adopt + rescue)	32	10	42	39	8	47	11.9%
Stray Over the Counter	164	432	596	166	509	675	13.3%
Stray Impounded in Field	361	240	601	203	153	356	-40.8%
Confiscated/Investigations	30	44	74	33	0	33	-55.4%
Abandoned & Transferred In	1	0	1	3	0	3	*
Born in Shelter	7	0	7	0	0	0	*
LIVE INTAKE	718	885	1,603	566	741	1,307	-18.5%
OUTCOME							
Adoption	404	327	731	432	607	1,039	42.1%
Returned to Owner	96	13	109	83	4	87	-20.2%
Transfer to HSTB	157	23	180	22	0	22	-87.8%
Sent to Rescue	119	229	348	3	124	127	-63.5%
Community Cat Returns		133	133		129	129	-3.0%
Total Live Outcome	776	725	1,501	540	864	1,404	-6.5%
Died in Custody/Transport	5	25	30	3	17	20	-33.3%
Euthanasia	43	104	147	50	136	186	26.5%
Lost/Missing/Unaccounted For	0	0	0	0	0	0	*
Non-Live Outcome	48	129	177	53	153	206	16.4%
TOTAL OUTCOME	824	854	1,678	593	1,017	1,610	-4.1%
Total Live Out/Total Out	94.17%	84.89%	89.45%	91.06%	84.96%	87.20%	
HSTB Kept Strays	109	96	205	94	7	101	
Monthly Comparisons	2012	2013	2014	2015	2016	2017	2018
Live Outcome/Total Outcome	37.46%	51.14%	81.39%	86.94%	83.02%	89.45%	87.20%



October 1st - October 31st

	FY17-18			FY18-19			Change
	DOG	CAT	TOTAL	DOG	CAT	TOTAL	
INTAKE							
Owner Surrender	123	159	282	122	71	193	-31.6%
Returns (adopt + rescue)	32	10	42	39	8	47	11.9%
Stray Over the Counter	164	432	596	166	509	675	13.3%
Stray Impounded in Field	361	240	601	203	153	356	-40.8%
Confiscated/Investigations	30	44	74	33	0	33	-55.4%
Abandoned & Transferred In	1	0	1	3	0	3	*
Born in Shelter	7	0	7	0	0	0	*
LIVE INTAKE	718	885	1,603	566	741	1,307	-18.5%
OUTCOME							
Adoption	404	327	731	432	607	1,039	42.1%
Returned to Owner	96	13	109	83	4	87	-20.2%
Sent to Rescue or Shelter	276	252	528	25	124	149	-71.8%
Community Cat Returns		133	133		129	129	-3.0%
Total Live Outcome	776	725	1,501	540	864	1,404	-6.5%
Died in Custody, Foster, Offsite	5	25	30	3	17	20	-33.3%
Euthanasia	43	104	147	50	136	186	26.5%
Lost/Missing/Unaccounted For	0	0	0	0	0	0	*
Non-Live Outcome	48	129	177	53	153	206	16.4%
TOTAL OUTCOME	824	854	1,678	593	1,017	1,610	-4.1%
Total Live Out/Total Out	94.17%	84.89%	89.45%	91.06%	84.96%	87.20%	

<i>FY Totals (Current FY is YTD)</i>	FY11-12	FY12-13	FY13-14	FY14-15	FY15-16	FY16-17	YTD
Total Live Intake	20,099	21,493	16,893	14,778	15,620	18,481	1,307
Live Outcome	7,340	10,021	11,707	12,833	12,917	16,058	1,404
Non Live Outcome	12,691	11,960	5,017	2,600	2,163	2,645	206
Total Outcome	20,031	21,981	16,724	15,433	15,080	18,703	1,610
	FY11-12	FY12-13	FY13-14	FY14-15	FY16-16	FY16-17	YTD
Total Live Out/Total Out	36.64%	45.59%	70.00%	83.15%	85.66%	85.86%	



Figures do not include close to 2000 stray pets taken in by HSTB and not transferred to PRC

Affordable Sterilization Vouchers

	Redeemed	Issued
Oct-18	65	726 **
Nov-18		
Dec-18		
Jan-19		
Feb-19		
Mar-19		
Apr-19		
May-19		
Jun-19		
Jul-19		
Aug-19		
Sep-19		
FY Totals	65	726

License Tag Sales

	FY14-15	FY15-16	FY16-17	FY17-18	FY18-19
October	\$144,685	\$116,482	\$116,985	\$164,556	\$164,505
November	\$108,896	\$130,315	\$136,977	\$182,802	
December	\$149,347	\$162,215	\$154,211	\$145,078	
January	\$135,602	\$96,636	\$158,793	\$178,753	
February	\$149,452	\$129,493	\$109,638	\$143,526	
March	\$189,842	\$166,242	\$184,382	\$180,889	
April	\$149,040	\$148,546	\$154,458	\$204,569	
May	\$161,296	\$168,534	\$176,606	\$207,145	
June	\$175,953	\$137,223	\$146,250	\$202,219	
July	\$122,197	\$118,009	\$159,902	\$199,203	
August	\$69,040	\$162,870	\$252,675	\$191,904	
September	\$222,404	\$150,039	\$158,507	\$173,280	
FY Totals	\$1,777,754	\$1,686,604	\$1,909,384	\$2,173,924	

* Current monthly figures are pre-verification with Clerk (may be adjusted)

** Employee on leave that processes vouchers