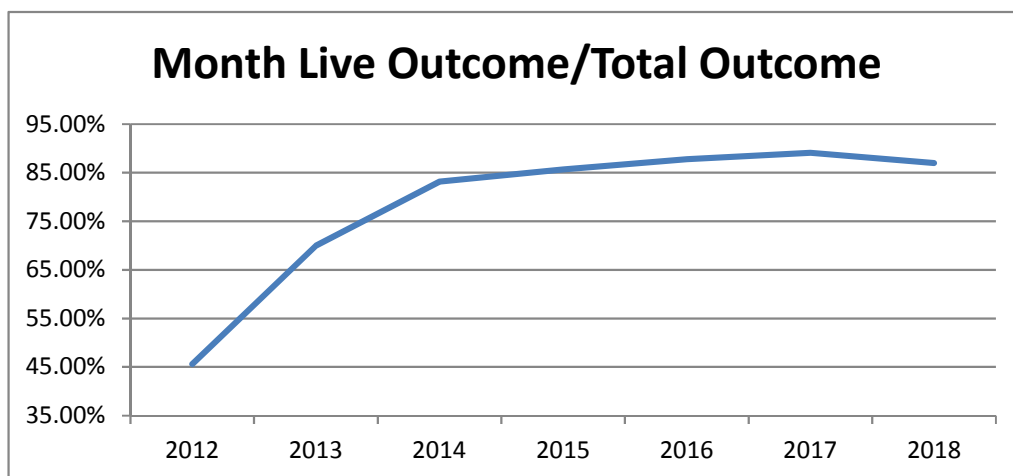


Monthly Data

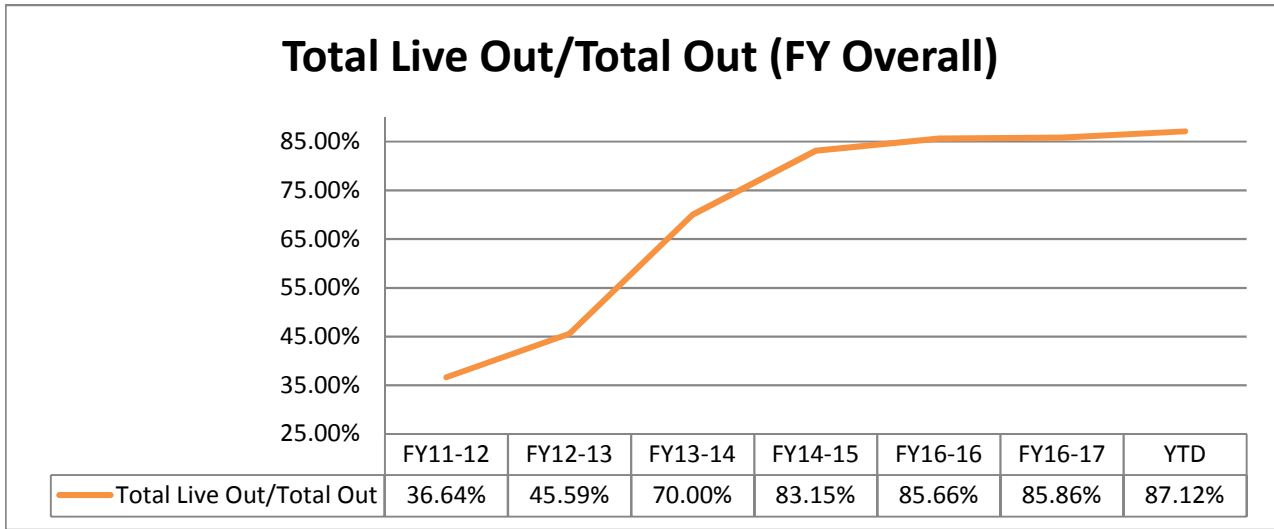
	Last Year			Current			Change
	DOG	CAT	TOTAL	DOG	CAT	TOTAL	
<b>INTAKE</b>							
Owner Surrender	116	75	191	100	75	175	-8.4%
Returns (adopt + rescue)	35	10	45	24	6	30	-33.3%
Stray Over the Counter	175	360	535	152	384	536	0.2%
Stray Impounded in Field	227	224	451	194	89	283	-37.3%
Confiscated/Investigations	21	2	23	17	10	27	17.4%
Abandoned & Transferred In	0	0	0	0	0	0	*
Born in Shelter	0	4	4	0	2	2	*
<b>LIVE INTAKE</b>	<b>574</b>	<b>675</b>	<b>1,249</b>	<b>487</b>	<b>566</b>	<b>1,053</b>	<b>-15.7%</b>
<b>OUTCOME</b>							
Adoption	331	335	666	359	486	845	26.9%
Returned to Owner	68	8	76	94	5	99	30.3%
Transfer to HSTB	114	6	120	13	0	13	-89.2%
Sent to Rescue	35	322	357	2	2	4	-98.9%
Community Cat Returns		131	131		64	64	-51.1%
<b>Total Live Outcome</b>	<b>548</b>	<b>802</b>	<b>1,350</b>	<b>468</b>	<b>557</b>	<b>1,025</b>	<b>-24.1%</b>
Died in Custody/Transport	3	32	35	2	4	6	-82.9%
Euthanasia	34	96	130	51	96	147	13.1%
Lost/Missing/Unaccounted For	0	0	0	0	0	0	*
<b>Non-Live Outcome</b>	<b>37</b>	<b>128</b>	<b>165</b>	<b>53</b>	<b>100</b>	<b>153</b>	<b>-7.3%</b>
<b>TOTAL OUTCOME</b>	<b>585</b>	<b>930</b>	<b>1,515</b>	<b>521</b>	<b>657</b>	<b>1,178</b>	<b>-22.2%</b>
Total Live Out/Total Out	93.68%	86.24%	89.11%	89.83%	84.78%	87.01%	
HSTB Kept Strays	87	54	141	123	5	128	
<b>Monthly Comparisons</b>	<b>2012</b>	<b>2013</b>	<b>2014</b>	<b>2015</b>	<b>2016</b>	<b>2017</b>	<b>2018</b>
Live Outcome/Total Outcome	45.59%	70.00%	83.15%	85.66%	87.80%	89.11%	87.01%



October 1st - November 30th

	FY17-18			FY18-19			Change
	DOG	CAT	TOTAL	DOG	CAT	TOTAL	
<b>INTAKE</b>							
Owner Surrender	239	234	<b>473</b>	222	146	<b>368</b>	-22.2%
Returns (adopt + rescue)	67	17	<b>84</b>	63	14	<b>77</b>	-8.3%
Stray Over the Counter	339	792	<b>1,131</b>	318	893	<b>1,211</b>	7.1%
Stray Impounded in Field	588	464	<b>1,052</b>	397	242	<b>639</b>	-39.3%
Confiscated/Investigations	51	46	<b>97</b>	50	10	<b>60</b>	-38.1%
Abandoned & Transferred In	1	0	<b>1</b>	3	0	<b>3</b>	*
Born in Shelter	7	4	<b>11</b>	0	2	<b>2</b>	*
<b>LIVE INTAKE</b>	<b>1,292</b>	<b>1,557</b>	<b>2,849</b>	<b>1,053</b>	<b>1,307</b>	<b>2,360</b>	-17.2%
<b>OUTCOME</b>							
Adoption	735	662	<b>1,397</b>	791	1,093	<b>1,884</b>	34.9%
Returned to Owner	164	21	<b>185</b>	177	9	<b>186</b>	0.5%
Sent to Rescue or Shelter	154	551	<b>705</b>	40	126	<b>166</b>	-76.5%
Community Cat Returns		264	<b>264</b>		193	<b>193</b>	-26.9%
<b>Total Live Outcome</b>	<b>1,053</b>	<b>1,498</b>	<b>2,551</b>	<b>1,008</b>	<b>1,421</b>	<b>2,429</b>	-4.8%
Died in Custody, Foster, Offsite	8	57	<b>65</b>	5	21	<b>26</b>	-60.0%
Euthanasia	77	200	<b>277</b>	101	232	<b>333</b>	20.2%
Lost/Missing/Unaccounted For	0	0	<b>0</b>	0	0	<b>0</b>	*
<b>Non-Live Outcome</b>	<b>85</b>	<b>257</b>	<b>342</b>	<b>106</b>	<b>253</b>	<b>359</b>	5.0%
<b>TOTAL OUTCOME</b>	<b>1,138</b>	<b>1,755</b>	<b>2,893</b>	<b>1,114</b>	<b>1,674</b>	<b>2,788</b>	-3.6%
Total Live Out/Total Out	92.53%	85.36%	88.18%	90.48%	84.89%	87.12%	

<i>FY Totals (Current FY is YTD)</i>	FY11-12	FY12-13	FY13-14	FY14-15	FY15-16	FY16-17	YTD
Total Live Intake	20,099	21,493	16,893	14,778	15,620	18,481	2,360
Live Outcome	7,340	10,021	11,707	12,833	12,917	16,058	2,429
Non Live Outcome	12,691	11,960	5,017	2,600	2,163	2,645	359
Total Outcome	20,031	21,981	16,724	15,433	15,080	18,703	2,788
	FY11-12	FY12-13	FY13-14	FY14-15	FY16-16	FY16-17	YTD
Total Live Out/Total Out	36.64%	45.59%	70.00%	83.15%	85.66%	85.86%	87.12%



Figures do not include close to 2000 stray pets taken in by HSTB and not transferred to PRC

Affordable Sterilization Vouchers

	Redeemed	Issued
Oct-18	65	726 **
Nov-18	809	617
Dec-18		
Jan-19		
Feb-19		
Mar-19		
Apr-19		
May-19		
Jun-19		
Jul-19		
Aug-19		
Sep-19		
<b>FY Totals</b>	<b>874</b>	<b>1,343</b>

License Tag Sales

	FY14-15	FY15-16	FY16-17	FY17-18	FY18-19
October	\$144,685	\$116,482	\$116,985	\$164,556	\$164,505
November	\$108,896	\$130,315	\$136,977	\$182,802	\$145,162
December	\$149,347	\$162,215	\$154,211	\$145,078	
January	\$135,602	\$96,636	\$158,793	\$178,753	
February	\$149,452	\$129,493	\$109,638	\$143,526	
March	\$189,842	\$166,242	\$184,382	\$180,889	
April	\$149,040	\$148,546	\$154,458	\$204,569	
May	\$161,296	\$168,534	\$176,606	\$207,145	
June	\$175,953	\$137,223	\$146,250	\$202,219	
July	\$122,197	\$118,009	\$159,902	\$199,203	
August	\$69,040	\$162,870	\$252,675	\$191,904	
September	\$222,404	\$150,039	\$158,507	\$173,280	
FY Totals	\$1,777,754	\$1,686,604	\$1,909,384	\$2,173,924	

\* Current monthly figures are pre-verification with Clerk (may be adjusted)

\*\* Employee on leave that processes vouchers