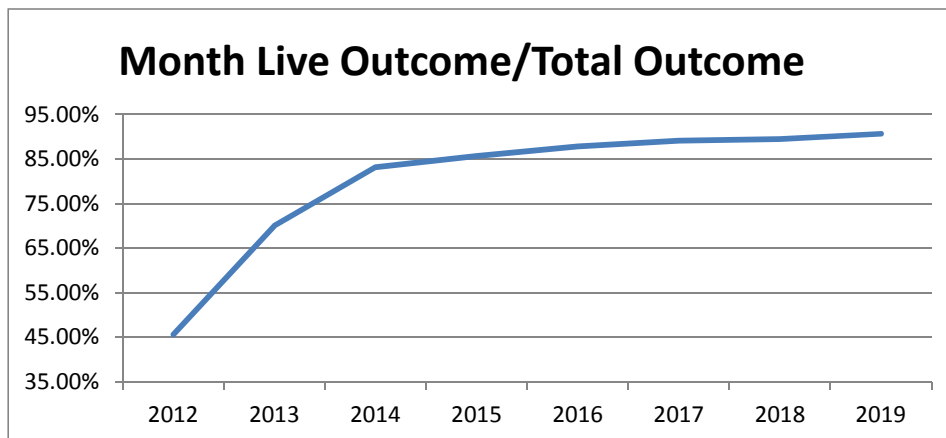


Monthly Data

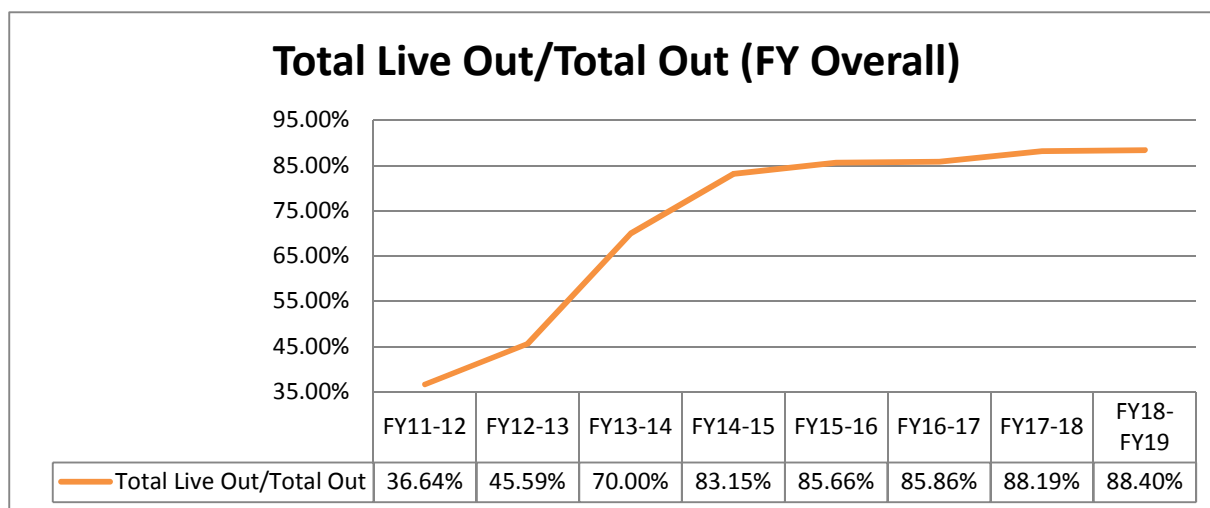
	Last Year			Current			Change	
	DOG	CAT	TOTAL	DOG	CAT	TOTAL		
<b>INTAKE</b>								
Owner Surrender	123	92	215	124	99	223	3.7%	
Returns (adopt + rescue)	43	7	50	34	6	40	-20.0%	
Stray Over the Counter	200	226	426	153	331	484	13.6%	
Stray Impounded in Field	288	207	495	184	55	239	-51.7%	
Confiscated/Investigations	13	11	24	21	17	38	58.3%	
Abandoned & Transferred In	0	0	0	0	1	1	100.0%	
Born in Shelter	11	0	11	0	7	7	-36.4%	
<b>LIVE INTAKE</b>	<b>678</b>	<b>543</b>	<b>1,221</b>	<b>516</b>	<b>516</b>	<b>1,032</b>	<b>-15.5%</b>	
<b>OUTCOME</b>								
Adoption	378	243	621	368	365	733	18.0%	
Returned to Owner	97	12	109	86	21	107	-1.8%	
Transfer to HSTB	123	32	155	28	0	28	-81.9%	
Sent to Rescue	14	97	111	0	8	8	-92.8%	
Community Cat Returns		111	111		86	86	-22.5%	
<b>Total Live Outcome</b>	<b>612</b>	<b>495</b>	<b>1,107</b>	<b>482</b>	<b>480</b>	<b>962</b>	<b>-13.1%</b>	
Died in Custody/Transport	3	4	7	1	1	2	-71.4%	
Euthanasia	55	39	94	35	61	96	2.1%	
Lost/Missing/Unaccounted For	0	0	0	1	0	1	*	
<b>Non-Live Outcome</b>	<b>58</b>	<b>43</b>	<b>101</b>	<b>37</b>	<b>62</b>	<b>99</b>	<b>-2.0%</b>	
<b>TOTAL OUTCOME</b>	<b>670</b>	<b>538</b>	<b>1,208</b>	<b>519</b>	<b>542</b>	<b>1,061</b>	<b>-12.2%</b>	
Total Live Out/Total Out	91.34%	92.01%	91.64%	92.87%	88.56%	90.67%		
HSTB Kept Strays	111	61	172	126	5	131		
Monthly Comparisons	2012	2013	2014	2015	2016	2017	2018	2019
Live Outcome/Total Outcome	45.59%	70.00%	83.15%	85.66%	87.80%	89.11%	89.47%	90.67%



October 1st - January 31st

	FY17-18			FY18-19			Change
	DOG	CAT	TOTAL	DOG	CAT	TOTAL	
<b>INTAKE</b>							
Owner Surrender	521	434	955	458	323	781	-18.2%
Returns (adopt + rescue)	131	38	169	117	23	140	-17.2%
Stray Over the Counter	747	1,290	2,037	653	1,584	2,237	9.8%
Stray Impounded in Field	1,135	835	1,970	731	361	1,092	-44.6%
Confiscated/Investigations	89	57	146	80	30	110	-24.7%
Abandoned & Transferred In	1	0	1	6	1	7	600.0%
Born in Shelter	18	4	22	0	9	9	-59.1%
<b>LIVE INTAKE</b>	<b>2,642</b>	<b>2,658</b>	<b>5,300</b>	<b>2,045</b>	<b>2,331</b>	<b>4,376</b>	<b>-17.4%</b>
<b>OUTCOME</b>							
Adoption	1,495	1,435	2,930	1,496	1,895	3,391	15.7%
Returned to Owner	356	40	396	345	34	379	-4.3%
Sent to Rescue or Shelter	221	830	1,051	77	152	229	-78.2%
Community Cat Returns		465	465		344	344	-26.0%
<b>Total Live Outcome</b>	<b>2,072</b>	<b>2,770</b>	<b>4,842</b>	<b>1,918</b>	<b>2,425</b>	<b>4,343</b>	<b>-10.3%</b>
Died in Custody, Foster, Offsite	11	72	83	8	30	38	-54.2%
Euthanasia	172	288	460	174	357	531	15.4%
Lost/Missing/Unaccounted For	0	0	0	1	0	1	100.0%
<b>Non-Live Outcome</b>	<b>183</b>	<b>360</b>	<b>543</b>	<b>183</b>	<b>387</b>	<b>570</b>	<b>5.0%</b>
<b>TOTAL OUTCOME</b>	<b>2,255</b>	<b>3,130</b>	<b>5,385</b>	<b>2,101</b>	<b>2,812</b>	<b>4,913</b>	<b>-8.8%</b>
Total Live Out/Total Out	91.88%	88.50%	89.92%	91.29%	86.24%	88.40%	

<i>FY Totals (Current FY is YTD)</i>	FY11-12	FY12-13	FY13-14	FY14-15	FY15-16	FY16-17	FY17-18	FY18-FY19
Total Live Intake	20,099	21,493	16,893	14,778	15,620	18,481	18,170	4,376
Live Outcome	7,340	10,021	11,707	12,833	12,917	16,058	17,061	4,343
Non Live Outcome	12,691	11,960	5,017	2,600	2,163	2,645	2,285	570
Total Outcome	20,031	21,981	16,724	15,433	15,080	18,703	19,346	4,913
	FY11-12	FY12-13	FY13-14	FY14-15	FY15-16	FY16-17	FY17-18	FY18-FY19
Total Live Out/Total Out	36.64%	45.59%	70.00%	83.15%	85.66%	85.86%	88.19%	88.40%



Figures do not include close to 2000 stray pets taken in by HSTB and not transferred to PRC

Affordable Sterilization Vouchers

	Redeemed	Issued
Oct-18	65	726 **
Nov-18	809	617
Dec-18	262	429
Jan-19	422	743
Feb-19		
Mar-19		
Apr-19		
May-19		
Jun-19		
Jul-19		
Aug-19		
Sep-19		
<b>FY Totals</b>	<b>1,558</b>	<b>2,515</b>

License Tag Sales\*

	FY14-15	FY15-16	FY16-17	FY17-18	FY18-19
October	\$144,685	\$116,482	\$116,985	\$164,556	\$164,505
November	\$108,896	\$130,315	\$136,977	\$182,802	\$148,317
December	\$149,347	\$162,215	\$154,211	\$145,078	\$114,433
January	\$135,602	\$96,636	\$158,793	\$178,753	\$194,641
February	\$149,452	\$129,493	\$109,638	\$143,526	
March	\$189,842	\$166,242	\$184,382	\$180,889	
April	\$149,040	\$148,546	\$154,458	\$204,569	
May	\$161,296	\$168,534	\$176,606	\$207,145	
June	\$175,953	\$137,223	\$146,250	\$202,219	
July	\$122,197	\$118,009	\$159,902	\$199,203	
August	\$69,040	\$162,870	\$252,675	\$191,904	
September	\$222,404	\$150,039	\$158,507	\$173,280	
FY Totals	\$1,777,754	\$1,686,604	\$1,909,384	\$2,173,924	

\* Current monthly figures are pre-verification with Clerk (may be adjusted)

\*\* Employee on leave that processes vouchers