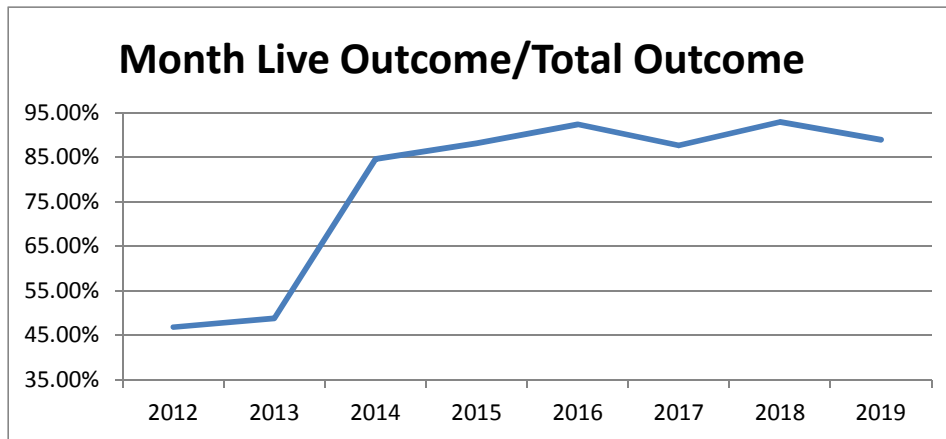


Monthly Data

	Last Year			Current			Change
	DOG	CAT	TOTAL	DOG	CAT	TOTAL	
INTAKE							
Owner Surrender	97	87	184	122	69	191	3.8%
Returns (adopt + rescue)	38	7	45	33	5	38	-15.6%
Stray Over the Counter	65	157	222	164	229	393	77.0%
Stray Impounded in Field	255	176	431	179	65	244	-43.4%
Confiscated/Investigations	28	4	32	9	0	9	-71.9%
Abandoned & Transferred In	0	0	0	0	0	0	*
Born in Shelter	0	0	0	0	5	5	*
LIVE INTAKE	483	431	914	507	373	880	-3.7%
OUTCOME							
Adoption	363	317	680	353	249	602	-11.5%
Returned to Owner	66	13	79	74	16	90	13.9%
Sent to Rescue	12	95	107	18	0	18	-83.2%
Community Cat Returns		91	91		76	76	-16.5%
Total Live Outcome	441	516	957	445	341	786	-17.9%
Died in Custody/Transport	3	3	6	1	5	6	0.0%
Euthanasia	18	49	67	52	40	92	37.3%
Lost/Missing/Unaccounted For	0	0	0	0	0	0	*
Non-Live Outcome	21	52	73	53	45	98	34.2%
TOTAL OUTCOME	462	568	1,030	498	386	884	-14.2%
Total Live Out/Total Out	95.45%	90.85%	92.91%	89.36%	88.34%	88.91%	
HSTB Kept Strays	107	17	124	99	5	104	

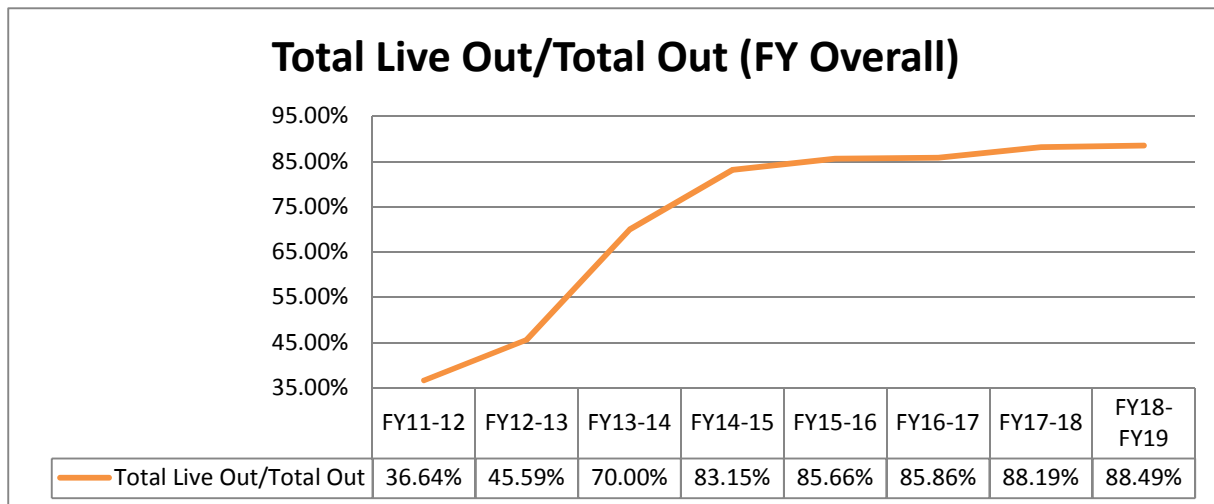
Monthly Comparisons	2012	2013	2014	2015	2016	2017	2018	2019
Live Outcome/Total Outcome	46.85%	48.84%	84.61%	88.09%	92.35%	87.62%	92.91%	88.91%



October 1st - February 28th

	FY17-18			FY18-19			Change
	DOG	CAT	TOTAL	DOG	CAT	TOTAL	
INTAKE							
Owner Surrender	618	521	1,139	580	392	972	-14.7%
Returns (adopt + rescue)	169	45	214	150	28	178	-16.8%
Stray Over the Counter	290	1,375	1,665	817	1,813	2,630	58.0%
Stray Impounded in Field	1,390	1,011	2,401	910	426	1,336	-44.4%
Confiscated/Investigations	117	61	178	89	30	119	-33.1%
Abandoned & Transferred In	1	0	1	6	1	7	600.0%
Born in Shelter	18	4	22	0	14	14	-36.4%
LIVE INTAKE	2,603	3,017	5,620	2,552	2,704	5,256	-6.5%
OUTCOME							
Adoption	1,858	1,752	3,610	1,849	2,144	3,993	10.6%
Returned to Owner	422	53	475	419	50	469	-1.3%
Sent to Rescue or Shelter	233	915	1,148	99	153	252	-78.0%
Community Cat Returns		556	556		420	420	-24.5%
Total Live Outcome	2,513	3,276	5,789	2,367	2,767	5,134	-11.3%
Died in Custody, Foster, Offsite	14	75	89	9	35	44	-50.6%
Euthanasia	190	337	527	226	397	623	18.2%
Lost/Missing/Unaccounted For	0	0	0	1	0	1	100.0%
Non-Live Outcome	204	412	616	236	432	668	8.4%
TOTAL OUTCOME	2,717	3,688	6,405	2,603	3,199	5,802	-9.4%
Total Live Out/Total Out	92.49%	88.83%	90.38%	90.93%	86.50%	88.49%	

<i>FY Totals (Current FY is YTD)</i>	FY11-12	FY12-13	FY13-14	FY14-15	FY15-16	FY16-17	FY17-18	FY18-FY19
Total Live Intake	20,099	21,493	16,893	14,778	15,620	18,481	18,170	5,256
Live Outcome	7,340	10,021	11,707	12,833	12,917	16,058	17,061	5,134
Non Live Outcome	12,691	11,960	5,017	2,600	2,163	2,645	2,285	668
Total Outcome	20,031	21,981	16,724	15,433	15,080	18,703	19,346	5,802
	FY11-12	FY12-13	FY13-14	FY14-15	FY15-16	FY16-17	FY17-18	FY18-FY19
Total Live Out/Total Out	36.64%	45.59%	70.00%	83.15%	85.66%	85.86%	88.19%	88.49%



Figures do not include close to 2000 stray pets taken in by HSTB and not transferred to PRC

Affordable Sterilization Vouchers

	Redeemed	Issued
Oct-18	65	726 **
Nov-18	809	617
Dec-18	262	429
Jan-19	422	743
Feb-19	412	615
Mar-19		
Apr-19		
May-19		
Jun-19		
Jul-19		
Aug-19		
Sep-19		
FY Totals	1,970	3,130

License Tag Sales*

	FY14-15	FY15-16	FY16-17	FY17-18	FY18-19
October	\$144,685	\$116,482	\$116,985	\$164,556	\$164,505
November	\$108,896	\$130,315	\$136,977	\$182,802	\$148,317
December	\$149,347	\$162,215	\$154,211	\$145,078	\$114,433
January	\$135,602	\$96,636	\$158,793	\$178,753	\$194,641
February	\$149,452	\$129,493	\$109,638	\$143,526	\$166,688
March	\$189,842	\$166,242	\$184,382	\$180,889	
April	\$149,040	\$148,546	\$154,458	\$204,569	
May	\$161,296	\$168,534	\$176,606	\$207,145	
June	\$175,953	\$137,223	\$146,250	\$202,219	
July	\$122,197	\$118,009	\$159,902	\$199,203	
August	\$69,040	\$162,870	\$252,675	\$191,904	
September	\$222,404	\$150,039	\$158,507	\$173,280	
FY Totals	\$1,777,754	\$1,686,604	\$1,909,384	\$2,173,924	

* Current monthly figures are pre-verification with Clerk (may be adjusted)

** Employee on leave that processes vouchers