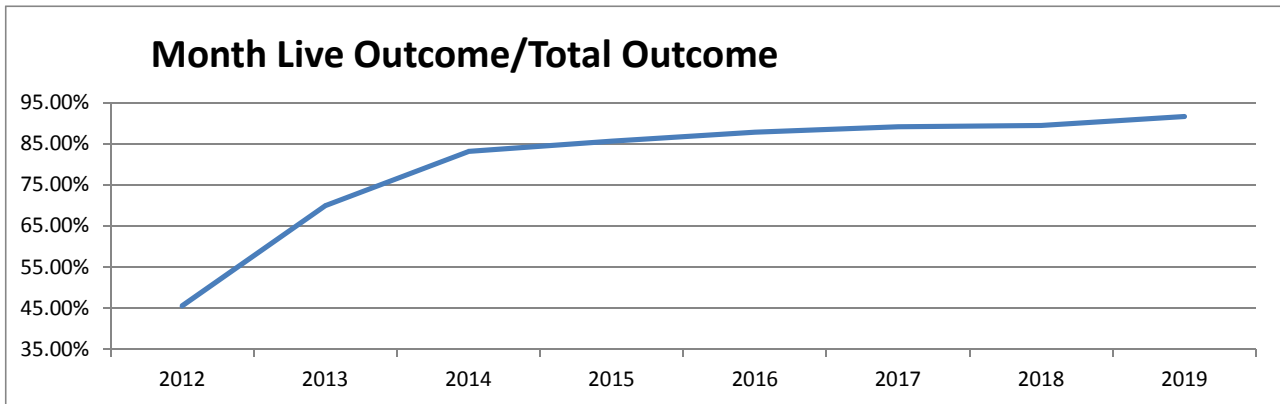


Monthly Data

	Last Year			Current			Change
	DOG	Dec-18 CAT	TOTAL	DOG	Dec-19 CAT	TOTAL	
INTAKE							
Owner Surrender	112	78	190	134	89	223	17.4%
Returns (adopt + rescue)	20	3	23	27	10	37	60.9%
Stray Over the Counter	182	360	542	161	336	497	-8.3%
Stray Impounded in Field	150	64	214	190	69	259	21.0%
Confiscated/Investigations	9	3	12	10	4	14	16.7%
Abandoned & Transferred In	3	0	3	2	0	2	-33.3%
Born in Shelter	0	0	0	0	0	0	0.0%
LIVE INTAKE	476	508	984	524	508	1,032	4.9%
OUTCOME							
Adoption	337	437	774	409	452	861	11.2%
Returned to Owner	82	4	86	80	12	92	7.0%
Sent to Rescue	9	18	27	14	16	30	11.1%
Community Cat Returns		65	65		57	57	-12.3%
Total Live Outcome	428	524	952	503	537	1,040	9.2%
Died in Custody/Transport	2	8	10	1	9	10	0.0%
Euthanasia	38	64	102	38	47	85	-16.7%
Lost/Missing/Unaccounted For	0	0	0	0	0	0	0.0%*
Non-Live Outcome	40	72	112	39	56	95	-15.2%
TOTAL OUTCOME	468	596	1,064	542	593	1,135	6.7%
Total Live Out/Total Out	91.45%	87.92%	89.47%	92.80%	90.56%	91.63%	

HSTB Kept Strays	127	7	134	110	4	114
------------------	-----	---	-----	-----	---	-----

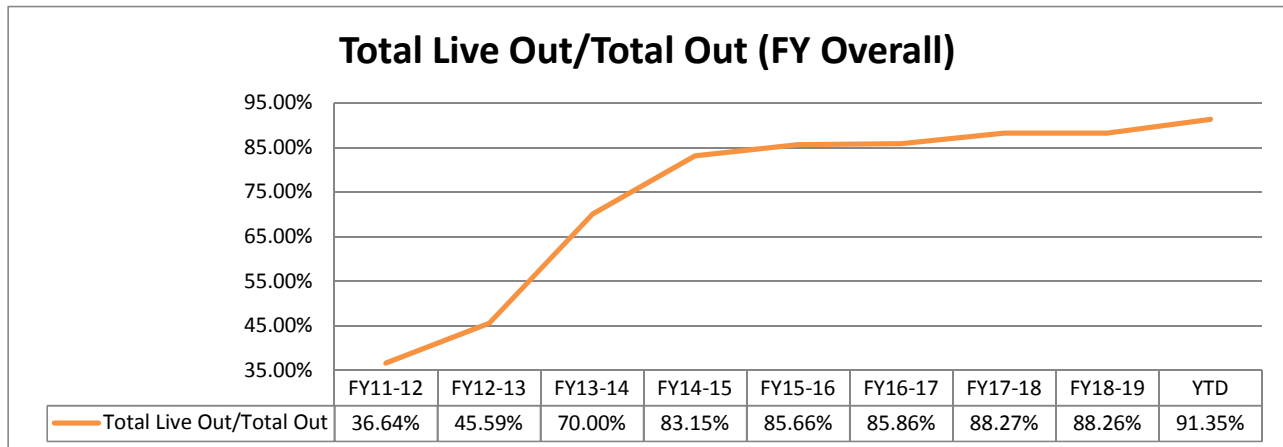
Monthly Comparisons	2012	2013	2014	2015	2016	2017	2018	2019
Live Outcome/Total Outcome	45.59%	70.00%	83.15%	85.66%	87.80%	89.11%	89.47%	91.63%



December 1st - December 31st

	FY18-19			FY19-20			Change
	DOG	CAT	TOTAL	DOG	CAT	TOTAL	
INTAKE							
Owner Surrender	334	224	558	381	266	647	15.9%
Returns (adopt + rescue)	83	17	100	101	26	127	27.0%
Stray Over the Counter	500	1,253	1,753	531	1,211	1,742	-0.6%
Stray Impounded in Field	547	306	853	550	275	825	-3.3%
Confiscated/Investigations	59	13	72	82	13	95	31.9%
Abandoned & Transferred In	6	0	6	6	9	15	150.0%
Born in Shelter	0	2	2	36	9	45	430.0%
LIVE INTAKE	1,529	1,815	3,344	1,687	1,809	3,496	4.5%
OUTCOME							
Adoption	1,128	1,530	2,658	1,451	1,563	3,014	13.4%
Returned to Owner	259	13	272	254	27	281	3.3%
Sent to Rescue or Shelter	49	144	193	180	37	217	12.4%
Community Cat Returns		258	258		238	238	-7.8%
Total Live Outcome	1,436	1,945	3,381	1,885	1,865	3,750	10.9%
Died in Custody, Foster, Offsite	7	29	36	13	33	46	27.8%
Euthanasia	139	296	435	89	218	307	-29.4%
Lost/Missing/Unaccounted For	0	0	0	1	1	2	100.0%
Non-Live Outcome	146	325	471	103	252	355	-24.6%
TOTAL OUTCOME	1,582	2,270	3,852	1,988	2,117	4,105	6.6%
Total Live Out/Total Out	90.77%	85.68%	87.77%	94.82%	88.10%	91.35%	

FY Totals (Current FY is YTD)	FY11-12	FY12-13	FY13-14	FY14-15	FY15-16	FY16-17	FY17-18	FY18-19	YTD
Total Live Intake	20,099	21,493	16,893	14,778	15,620	18,481	14,780	15,542	3,496
Live Outcome	7,340	10,021	11,707	12,833	12,917	16,058	13,788	13,867	3,750
Non Live Outcome	12,691	11,960	5,017	2,600	2,163	2,645	1,833	1,845	355
Total Outcome	20,031	21,981	16,724	15,433	15,080	18,703	15,621	15,624	4,105
	FY11-12	FY12-13	FY13-14	FY14-15	FY15-16	FY16-17	FY17-18	FY18-19	YTD
Total Live Out/Total Out	36.64%	45.59%	70.00%	83.15%	85.66%	85.86%	88.27%	88.26%	91.35%



Figures do not include close to 2000 stray pets taken in by HSTB and not transferred to PRC

Affordable Sterilization Vouchers

	Redeemed	Issued
Oct-19	518	685
Nov-19	423	548
Dec-19	277	480
Jan-20		
Feb-20		
Mar-20		
Apr-20		
May-20		
Jun-20		
Jul-20		
Aug-20		
Sep-20		
FY Totals	1,218	1,713

License Tag Sales*

	FY14-15	FY15-16	FY16-17	FY17-18	FY18-19	FY19-20
October	\$144,685	\$116,482	\$116,985	\$164,556	\$164,505	\$189,712
November	\$108,896	\$130,315	\$136,977	\$182,802	\$148,317	\$156,049
December	\$149,347	\$162,215	\$154,211	\$145,078	\$114,433	\$175,070
January	\$135,602	\$96,636	\$158,793	\$178,753	\$194,641	
February	\$149,452	\$129,493	\$109,638	\$143,526	\$166,688	
March	\$189,842	\$166,242	\$184,382	\$180,889	\$183,723	
April	\$149,040	\$148,546	\$154,458	\$204,569	\$190,574	
May	\$161,296	\$168,534	\$176,606	\$207,145	\$196,944	
June	\$175,953	\$137,223	\$146,250	\$202,219	\$173,146	
July	\$122,197	\$118,009	\$159,902	\$199,203	\$206,699	
August	\$69,040	\$162,870	\$252,675	\$191,904	\$189,027	
September	\$222,404	\$150,039	\$158,507	\$173,280	\$215,845	
FY Totals	\$1,777,754	\$1,686,604	\$1,909,384	\$2,173,924	\$2,144,541	\$520,830

* Current monthly figures are pre-verification with Clerk (may be adjusted)