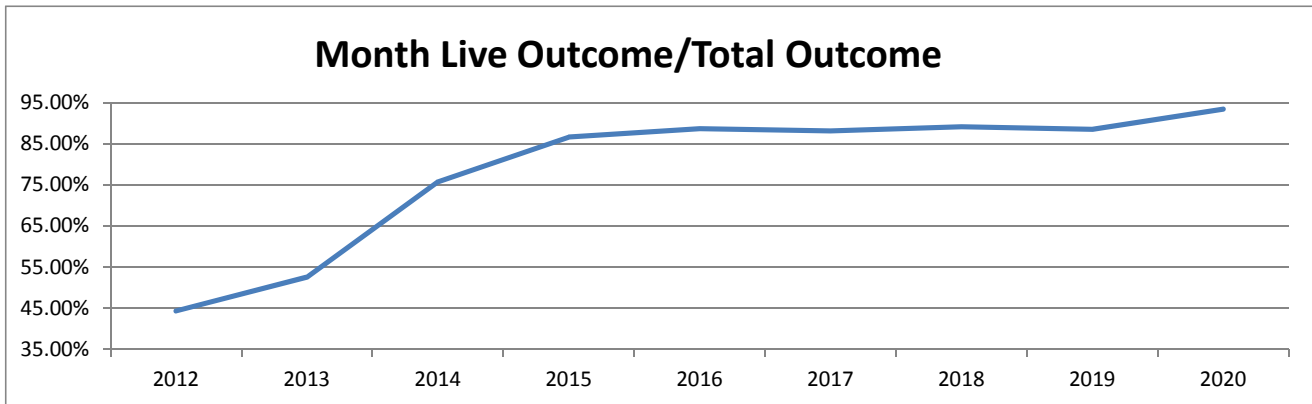


Monthly Data

	Last Year			Current			Change
	DOG	Mar-19 CAT	TOTAL	DOG	Mar-20 CAT	TOTAL	
INTAKE							
Owner Surrender	173	129	302	79	54	133	-56.0%
Returns (adopt + rescue)	43	13	56	15	7	22	-60.7%
Stray Over the Counter	147	318	465	115	112	227	-51.2%
Stray Impounded in Field	184	65	249	132	60	192	-22.9%
Confiscated/Investigations	35	25	60	11	0	11	-81.7%
Abandoned & Transferred In	1	0	1	1	2	3	200.0%
Born in Shelter	0	0	0	0	0	0	0.0%
LIVE INTAKE	583	550	1,133	353	235	588	-48.1%
OUTCOME							
Adoption	497	325	822	402	229	631	-23.2%
Returned to Owner	85	9	94	48	8	56	-40.4%
Sent to Rescue	3	7	10	25	0	25	150.0%
Community Cat Returns		95	95		33	33	-65.3%
Total Live Outcome	585	436	1,021	475	270	745	-27.0%
Died in Custody/Transport	2	6	8	2	1	3	-62.5%
Euthanasia	55	69	124	25	24	49	-60.5%
Lost/Missing/Unaccounted For	0	0	0	0	0	0	0.0%*
Non-Live Outcome	57	75	132	27	25	52	-60.6%
TOTAL OUTCOME	642	511	1,153	502	295	797	-30.9%
Total Live Out/Total Out	91.12%	85.32%	88.55%	94.62%	91.53%	93.48%	

HSTB Kept Strays	99	13	112	87	6	93
------------------	----	----	-----	----	---	----

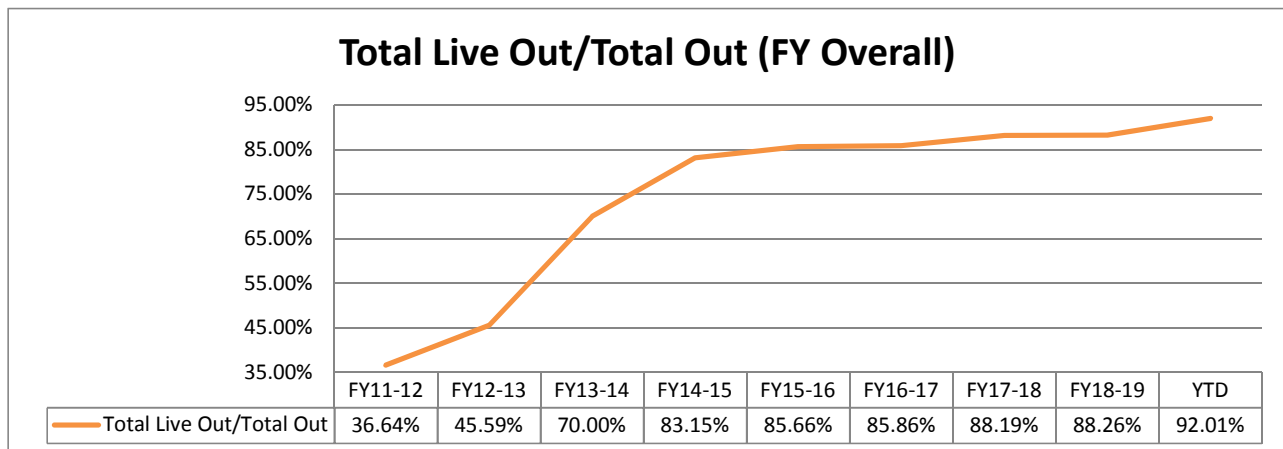
Monthly Comparisons	2012	2013	2014	2015	2016	2017	2018	2019	2020
Live Outcome/Total Outcome	44.36%	52.54%	75.78%	86.62%	88.70%	88.15%	89.16%	88.55%	93.48%



March 1st - March 31st

	FY18-19			FY19-20			Change
	DOG	CAT	TOTAL	DOG	CAT	TOTAL	
INTAKE							
Owner Surrender	753	521	1,274	723	531	1,254	-1.6%
Returns (adopt + rescue)	193	41	234	165	48	213	-9.0%
Stray Over the Counter	964	2,131	3,095	1,009	1,716	2,725	-12.0%
Stray Impounded in Field	1,094	491	1,585	1,028	438	1,466	-7.5%
Confiscated/Investigations	124	55	179	141	16	157	-12.3%
Abandoned & Transferred In	7	1	8	13	11	24	200.0%
Born in Shelter	0	14	14	42	11	53	430.0%
LIVE INTAKE	3,135	3,254	6,389	3,121	2,771	5,892	-7.8%
OUTCOME							
Adoption	2,346	2,469	4,815	2,684	2,389	5,073	5.4%
Returned to Owner	504	59	563	452	50	502	-10.8%
Sent to Rescue or Shelter	98	159	257	230	59	289	12.5%
Community Cat Returns		515	515		415	415	-19.4%
Total Live Outcome	2,948	3,202	6,150	3,366	2,913	6,279	2.1%
Died in Custody, Foster, Offsite	11	41	52	20	36	56	7.7%
Euthanasia	281	466	747	165	322	487	-34.8%
Lost/Missing/Unaccounted For	1	0	1	1	1	2	100.0%
Non-Live Outcome	293	507	800	186	359	545	-31.9%
TOTAL OUTCOME	3,241	3,709	6,950	3,552	3,272	6,824	-1.8%
Total Live Out/Total Out	90.96%	86.33%	88.49%	94.76%	89.03%	92.01%	

<i>FY Totals (Current FY is YTD)</i>	FY11-12	FY12-13	FY13-14	FY14-15	FY15-16	FY16-17	FY17-18	FY18-19	YTD
Total Live Intake	20,099	21,493	16,893	14,778	15,620	18,481	18,170	15,542	5,892
Live Outcome	7,340	10,021	11,707	12,833	12,917	16,058	17,061	13,867	6,279
Non Live Outcome	12,691	11,960	5,017	2,600	2,163	2,645	2,285	1,845	545
Total Outcome	20,031	21,981	16,724	15,433	15,080	18,703	19,346	15,624	6,824
	FY11-12	FY12-13	FY13-14	FY14-15	FY15-16	FY16-17	FY17-18	FY18-19	YTD
Total Live Out/Total Out	36.64%	45.59%	70.00%	83.15%	85.66%	85.86%	88.19%	88.26%	92.01%



Figures do not include close to 2000 stray pets taken in by HSTB and not transferred to PRC

Affordable Sterilization Vouchers

	Redeemed	Issued
Oct-19	518	685
Nov-19	423	548
Dec-19	277	480
Jan-20	433	728
Feb-20	447	484
Mar-20	284	373
Apr-20		
May-20		
Jun-20		
Jul-20		
Aug-20		
Sep-20		
FY Totals	2,382	3,298

License Tag Sales*

	FY14-15	FY15-16	FY16-17	FY17-18	FY18-19	FY19-20
October	\$144,685	\$116,482	\$116,985	\$164,556	\$164,505	\$189,712
November	\$108,896	\$130,315	\$136,977	\$182,802	\$148,317	\$156,049
December	\$149,347	\$162,215	\$154,211	\$145,078	\$114,433	\$175,070
January	\$135,602	\$96,636	\$158,793	\$178,753	\$194,641	\$209,127
February	\$149,452	\$129,493	\$109,638	\$143,526	\$166,688	\$201,916
March	\$189,842	\$166,242	\$184,382	\$180,889	\$183,723	\$191,075
April	\$149,040	\$148,546	\$154,458	\$204,569	\$190,574	
May	\$161,296	\$168,534	\$176,606	\$207,145	\$196,944	
June	\$175,953	\$137,223	\$146,250	\$202,219	\$173,146	
July	\$122,197	\$118,009	\$159,902	\$199,203	\$206,699	
August	\$69,040	\$162,870	\$252,675	\$191,904	\$189,027	
September	\$222,404	\$150,039	\$158,507	\$173,280	\$215,845	
FY Totals	\$1,777,754	\$1,686,604	\$1,909,384	\$2,173,924	\$2,144,541	\$1,122,947

* Current monthly figures are pre-verification with Clerk (may be adjusted)