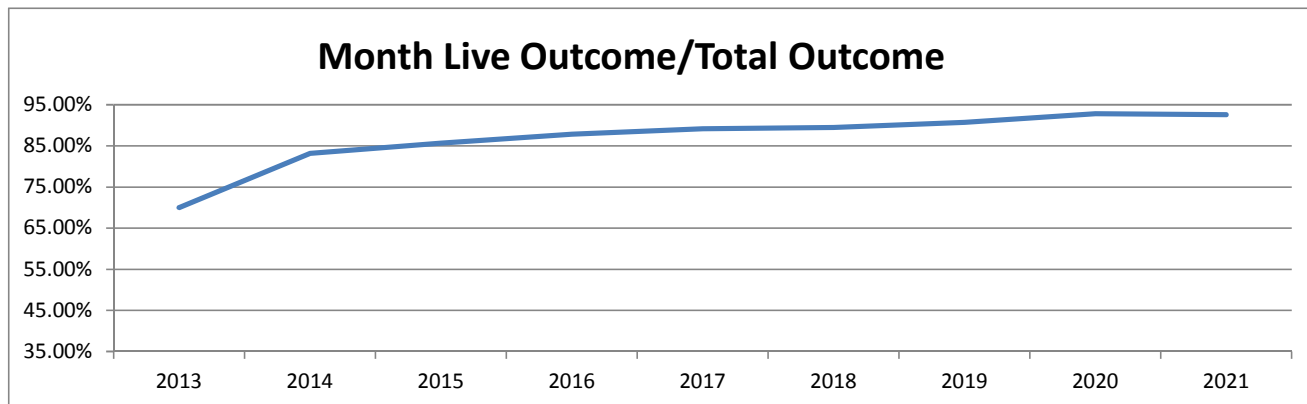


Monthly Data

	Last Year			Current			Change
	DOG	Jan-20 CAT	TOTAL	DOG	Jan-21 CAT	TOTAL	
INTAKE							
Owner Surrender	127	107	234	69	20	89	-62.0%
Returns (adopt + rescue)	22	9	31	16	2	18	-41.9%
Stray Over the Counter	187	220	407	57	158	215	-47.2%
Stray Impounded in Field	189	67	256	127	62	189	-26.2%
Confiscated/Investigations	14	3	17	17	4	21	23.5%
Abandoned & Transferred In	4	0	4	0	0	0	-100.0%
Born in Shelter	0	0	0	3	2	5	100.0%
LIVE INTAKE	543	406	949	289	248	537	-43.4%
OUTCOME							
Adoption	440	380	820	183	186	369	-55.0%
Returned to Owner	80	6	86	49	7	56	-34.9%
Sent to Rescue	9	16	25	9	3	12	-52.0%
Community Cat Returns		73	73		34	34	-53.4%
Total Live Outcome	529	475	1,004	241	230	471	-53.1%
Died in Custody/Transport	3	1	4	1	1	2	-50.0%
Euthanasia	30	44	74	16	20	36	-51.4%
Lost/Missing/Unaccounted For	0	0	0	0	0	0	0.0%
Non-Live Outcome	33	45	78	17	21	38	-51.3%
TOTAL OUTCOME	562	520	1,082	258	251	509	-53.0%
Total Live Out/Total Out	94.13%	91.35%	92.79%	93.41%	91.63%	92.53%	

HSTB Kept Strays	76	4	80	156	17	173
------------------	----	---	----	-----	----	-----

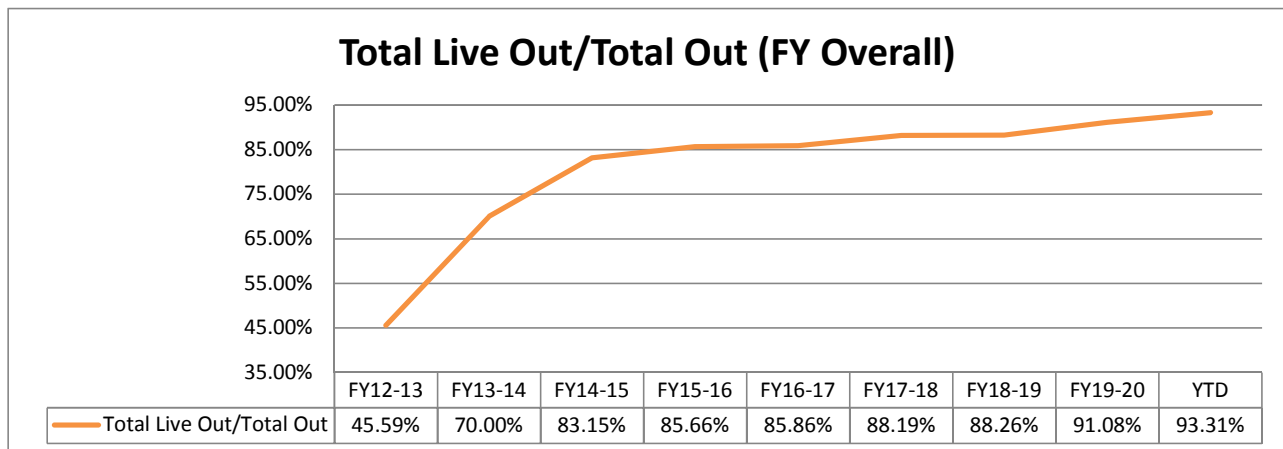
Monthly Comparisons	2013	2014	2015	2016	2017	2018	2019	2020	2021
Live Outcome/Total Outcome	70.00%	83.15%	85.66%	87.80%	89.11%	89.47%	90.67%	92.79%	92.53%



October 1st - January 31st

	FY19-20			FY20-21			Change
	DOG	CAT	TOTAL	DOG	CAT	TOTAL	
INTAKE							
Owner Surrender	508	373	881	235	122	357	-59.5%
Returns (adopt + rescue)	123	35	158	80	9	89	-43.7%
Stray Over the Counter	718	1,431	2,149	307	818	1,125	-47.7%
Stray Impounded in Field	739	342	1,081	398	251	649	-40.0%
Confiscated/Investigations	96	16	112	53	7	60	-46.4%
Abandoned & Transferred In	10	9	19	0	11	11	-42.1%
Born in Shelter	36	9	45	12	2	14	-68.9%
LIVE INTAKE	2,230	2,215	4,445	1,085	1,220	2,305	-48.1%
OUTCOME							
Adoption	1,891	1,943	3,834	782	1,001	1,783	-53.5%
Returned to Owner	334	33	367	182	19	201	-45.2%
Sent to Rescue or Shelter	189	53	242	49	18	67	-72.3%
Community Cat Returns		311	311		151	151	-51.4%
Total Live Outcome	2,414	2,340	4,754	1,013	1,189	2,202	-53.7%
Died in Custody, Foster, Offsite	16	34	50	6	8	14	-72.0%
Euthanasia	119	262	381	53	91	144	-62.2%
Lost/Missing/Unaccounted For	1	1	2	0	0	0	-100.0%
Non-Live Outcome	136	297	433	59	99	158	-63.5%
TOTAL OUTCOME	2,550	2,637	5,187	1,072	1,288	2,360	-54.5%
Total Live Out/Total Out	94.67%	88.74%	91.65%	94.50%	92.31%	93.31%	

FY Totals (Current FY is YTD)	FY12-13	FY13-14	FY14-15	FY15-16	FY16-17	FY17-18	FY18-19	FY19-20	YTD
Total Live Intake	21,493	16,893	14,778	15,620	18,481	18,170	15,542	9,287	2,305
Live Outcome	10,021	11,707	12,833	12,917	16,058	17,061	13,867	9,224	2,202
Non Live Outcome	11,960	5,017	2,600	2,163	2,645	2,285	1,845	903	158
Total Outcome	21,981	16,724	15,433	15,080	18,703	19,346	15,624	10,127	2,360
	FY12-13	FY13-14	FY14-15	FY15-16	FY16-17	FY17-18	FY18-19	FY19-20	YTD
Total Live Out/Total Out	45.59%	70.00%	83.15%	85.66%	85.86%	88.19%	88.26%	91.08%	93.31%



Figures do not include close to 2000 stray pets taken in by HSTB and not transferred to PRC

Affordable Sterilization Vouchers

	Redeemed	Issued
Oct-20	279	539
Nov-20	210	406
Dec-20	370	435
Jan-21	505	636
Feb-21		
Mar-21		
Apr-21		
May-21		
Jun-21		
Jul-21		
Aug-21		
Sep-21		
FY Totals	1,364	2,016

License Tag Sales*

	FY15-16	FY16-17	FY17-18	FY18-19	FY19-20	FY20-21
October	\$116,482	\$116,985	\$164,556	\$164,505	\$189,712	\$200,270
November	\$130,315	\$136,977	\$182,802	\$148,317	\$156,049	\$151,046
December	\$162,215	\$154,211	\$145,078	\$114,433	\$175,070	\$192,513
January	\$96,636	\$158,793	\$178,753	\$194,641	\$209,127	\$163,468
February	\$129,493	\$109,638	\$143,526	\$166,688	\$201,916	
March	\$166,242	\$184,382	\$180,889	\$183,723	\$219,995	
April	\$148,546	\$154,458	\$204,569	\$190,574	\$140,005	
May	\$168,534	\$176,606	\$207,145	\$196,944	\$210,566	
June	\$137,223	\$146,250	\$202,219	\$173,146	\$210,141	
July	\$118,009	\$159,902	\$199,203	\$206,699	\$254,505	
August	\$162,870	\$252,675	\$191,904	\$189,027	\$260,066	
September	\$150,039	\$158,507	\$173,280	\$215,845	\$194,023	
FY Totals	\$1,686,604	\$1,909,384	\$2,173,924	\$2,144,541	\$2,421,173	\$707,296

* Current monthly figures are pre-verification with Clerk (may be adjusted)