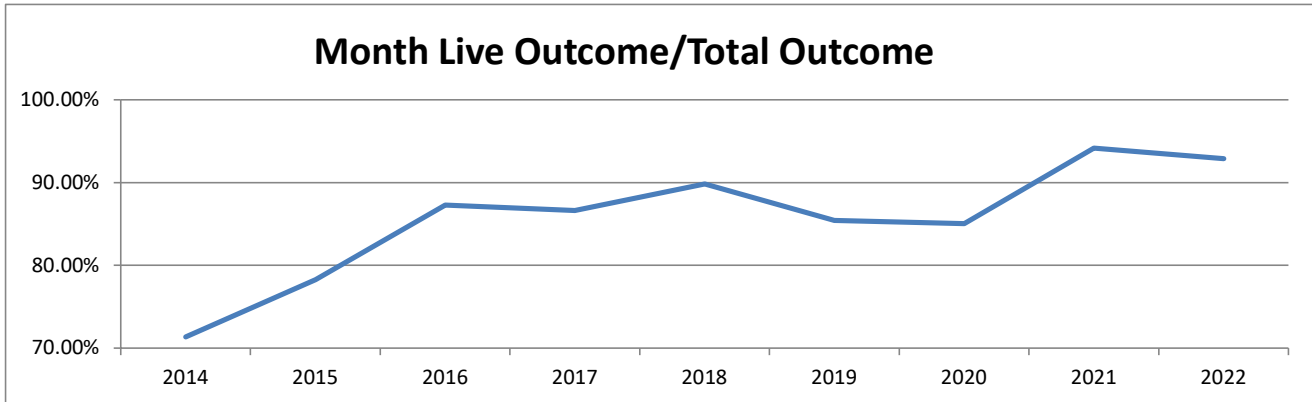


Monthly Data

Monthly Data	Last Year			Current			Change
	DOG	Apr-21 CAT	TOTAL	DOG	Apr-22 CAT	TOTAL	
<b>INTAKE</b>							
Owner Surrender	69	28	97	83	76	159	63.9%
Returns (adopt + rescue)	17	3	20	25	5	30	50.0%
Stray Over the Counter	52	180	232	132	355	487	109.9%
Stray Impounded in Field	123	132	255	107	141	248	-2.7%
Confiscated/Investigations	24	0	24	29	2	31	29.2%
Abandoned & Transferred In	1	0	1	9	1	10	100.0%
Born in Shelter	0	3	3	0	3	3	0.0%
<b>LIVE INTAKE</b>	<b>286</b>	<b>346</b>	<b>632</b>	<b>385</b>	<b>583</b>	<b>968</b>	53.2%
<b>OUTCOME</b>							
Adoption	194	273	467	256	288	544	16.5%
Returned to Owner	53	7	60	84	6	90	50.0%
Sent to Rescue	9	2	11	21	50	71	545.5%
Community Cat Returns			24			90	275.0%
<b>Total Live Outcome</b>	<b>256</b>	<b>306</b>	<b>562</b>	<b>361</b>	<b>434</b>	<b>795</b>	41.5%
Died in Custody/Transport	2	5	7	1	13	14	100.0%
Euthanasia	12	16	28	26	21	47	67.9%
Lost/Missing/Unaccounted For	0	0	0	0	0	0	0.0%
<b>Non-Live Outcome</b>	<b>14</b>	<b>21</b>	<b>35</b>	<b>27</b>	<b>34</b>	<b>61</b>	74.3%
<b>TOTAL OUTCOME</b>	<b>270</b>	<b>327</b>	<b>597</b>	<b>388</b>	<b>468</b>	<b>856</b>	43.4%
Total Live Out/Total Out	94.81%	93.58%	94.14%			92.87%	

HSTB Kept Strays	107	5	112	149	9	158
------------------	-----	---	-----	-----	---	-----

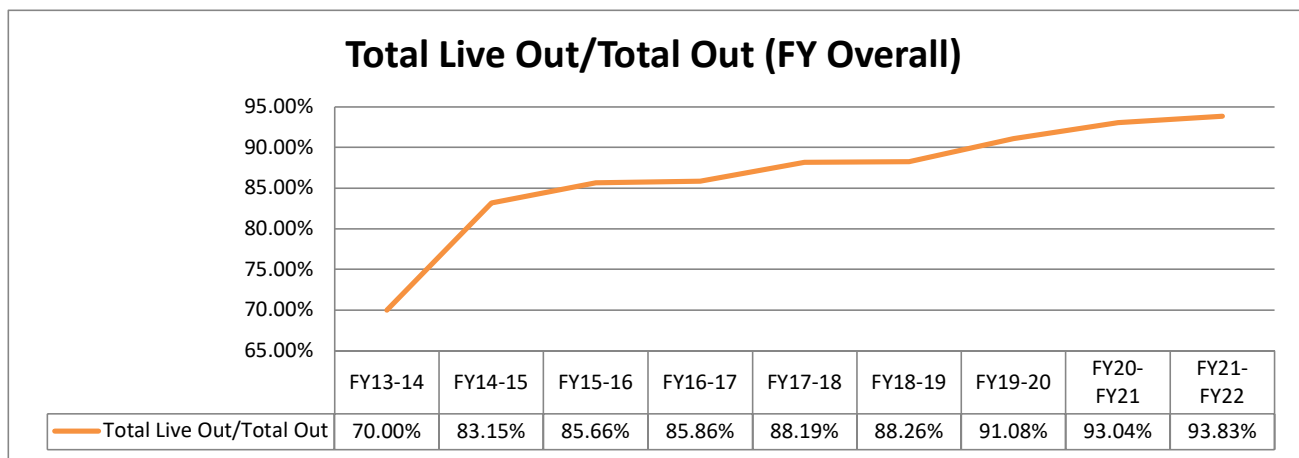
Monthly Comparisons	2014	2015	2016	2017	2018	2019	2020	2021	2022
Live Outcome/Total Outcome	71.33%	78.26%	87.25%	86.61%	89.84%	85.43%	85.02%	94.14%	92.87%



October 1st - April 30th

	FY20-21			FY21-22			Change
	DOG	CAT	TOTAL	DOG	CAT	TOTAL	
<b>INTAKE</b>							
Owner Surrender	421	202	<b>623</b>	427	270	<b>697</b>	11.9%
Returns (adopt + rescue)	133	16	<b>149</b>	183	40	<b>223</b>	49.7%
Stray Over the Counter	468	1,231	<b>1,699</b>	825	1,938	<b>2,763</b>	62.6%
Stray Impounded in Field	742	491	<b>1,233</b>	779	640	<b>1,419</b>	15.1%
Confiscated/Investigations	107	9	<b>116</b>	141	22	<b>163</b>	40.5%
Abandoned & Transferred In	1	11	<b>12</b>	17	2	<b>19</b>	58.3%
Born in Shelter	12	8	<b>20</b>	0	3	<b>3</b>	-85.0%
<b>LIVE INTAKE</b>	<b>1,884</b>	<b>1,968</b>	<b>3,852</b>	<b>2,372</b>	<b>2,915</b>	<b>5,287</b>	37.3%
<b>OUTCOME</b>							
Adoption	1,338	1,549	<b>2,887</b>	1,736	2,049	<b>3,785</b>	31.1%
Returned to Owner	363	36	<b>399</b>	407	35	<b>442</b>	10.8%
Sent to Rescue or Shelter	80	26	<b>106</b>	68	74	<b>142</b>	34.0%
Community Cat Returns		237	<b>237</b>		542	<b>542</b>	128.7%
<b>Total Live Outcome</b>	<b>1,781</b>	<b>1,848</b>	<b>3,629</b>	<b>2,211</b>	<b>2,700</b>	<b>4,911</b>	35.3%
Died in Custody, Foster, Offsite	12	20	<b>32</b>	6	48	<b>54</b>	68.8%
Euthanasia	95	141	<b>236</b>	130	139	<b>269</b>	14.0%
Lost/Missing/Unaccounted For	0	0	<b>0</b>	0	0	<b>0</b>	0.0%
<b>Non-Live Outcome</b>	<b>107</b>	<b>161</b>	<b>268</b>	<b>136</b>	<b>187</b>	<b>323</b>	20.5%
<b>TOTAL OUTCOME</b>	<b>1,888</b>	<b>2,009</b>	<b>3,897</b>	<b>2,347</b>	<b>2,887</b>	<b>5,234</b>	34.3%
Total Live Out/Total Out	94.33%	91.99%	93.12%	94.21%	93.52%	93.83%	

<i>FY Totals (Current FY is YTD)</i>	FY13-14	FY14-15	FY15-16	FY16-17	FY17-18	FY18-19	FY19-20	FY20-FY21	FY21-FY22
Total Live Intake	16,893	14,778	15,620	18,481	18,170	15,542	9,287	7,197	5,287
Live Outcome	11,707	12,833	12,917	16,058	17,061	13,867	9,224	6,484	4,911
Non Live Outcome	5,017	2,600	2,163	2,645	2,285	1,845	903	485	323
Total Outcome	16,724	15,433	15,080	18,703	19,346	15,624	10,127	6,969	5,234
	FY13-14	FY14-15	FY15-16	FY16-17	FY17-18	FY18-19	FY19-20	FY20-FY21	FY21-FY22
Total Live Out/Total Out	70.00%	83.15%	85.66%	85.86%	88.19%	88.26%	91.08%	93.04%	93.83%



Figures do not include close to 2000 stray pets taken in by HSTB and not transferred to PRC

Affordable Sterilization Vouchers

	Redeemed	Issued
Oct-21	250	469
Nov-21	602	340
Dec-21	265	398
Jan-22	384	516
Feb-22	99	399
Mar-22	454	592
Apr-22	258	508
May-22		
Jun-22		
Jul-22		
Aug-22		
Sep-22		
<b>FY Totals</b>	<b>2,312</b>	<b>3,222</b>

License Tag Sales\*

	FY16-17	FY17-18	FY18-19	FY19-20	FY20-21	FY21-22
October	\$116,985	\$164,556	\$164,505	\$189,712	\$200,270	\$161,232
November	\$136,977	\$182,802	\$148,317	\$156,049	\$151,046	\$269,688
December	\$154,211	\$145,078	\$114,433	\$175,070	\$192,513	\$155,234
January	\$158,793	\$178,753	\$194,641	\$209,127	\$161,968	\$225,219
February	\$109,638	\$143,526	\$166,688	\$201,916	\$214,785	\$182,257
March	\$184,382	\$180,889	\$183,723	\$219,995	\$248,575	\$271,043
April	\$154,458	\$204,569	\$190,574	\$140,005	\$248,119	\$197,779
May	\$176,606	\$207,145	\$196,944	\$210,566	\$234,210	
June	\$146,250	\$202,219	\$173,146	\$210,141	\$293,384	
July	\$159,902	\$199,203	\$206,699	\$254,505	\$167,468	
August	\$252,675	\$191,904	\$189,027	\$260,066	\$261,986	
September	\$158,507	\$173,280	\$215,845	\$194,023	\$250,005	
<b>FY Totals</b>	<b>\$1,909,384</b>	<b>\$2,173,924</b>	<b>\$2,144,541</b>	<b>\$2,421,173</b>	<b>\$2,624,325</b>	<b>\$1,462,450</b>

\* Current monthly figures are pre-verification with Clerk (may be adjusted)