

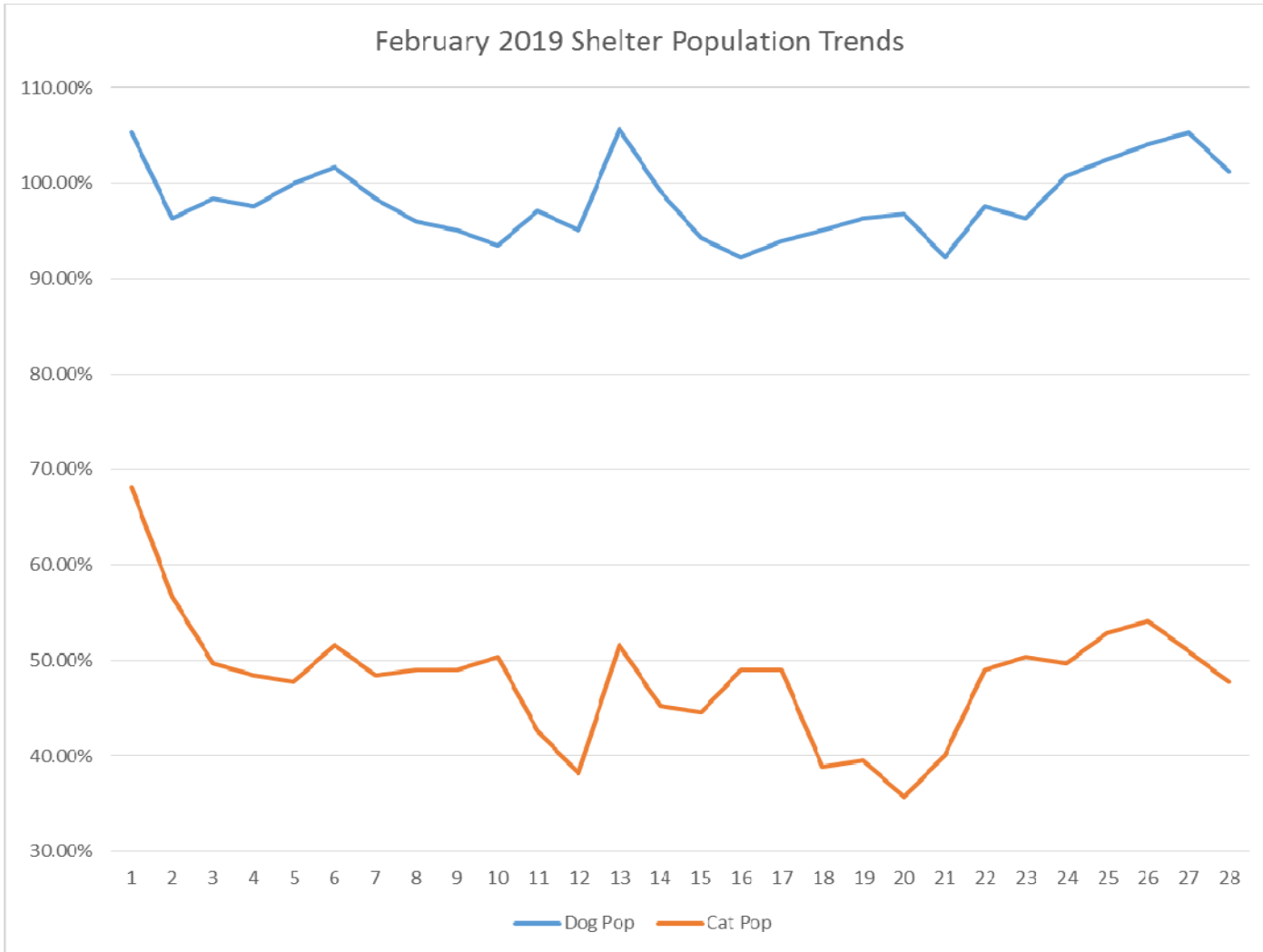
DATE	Dog Pop	Cat Pop	Shelter Pop
1	102.04%	64.33%	87.31%
2	101.63%	65.61%	87.56%
3	95.51%	63.69%	83.08%
4	93.88%	71.97%	85.32%
5	92.65%	70.06%	83.83%
6	90.61%	64.33%	80.35%
7	93.06%	61.15%	80.60%
8	97.14%	67.52%	85.57%
9	95.10%	76.43%	87.81%
10	95.10%	70.70%	85.57%
11	96.73%	60.51%	82.59%
12	107.35%	76.43%	95.27%
13	106.12%	77.07%	94.78%
14	102.45%	59.87%	85.82%
15	101.63%	57.96%	84.58%
16	97.96%	52.87%	80.35%
17	91.43%	61.78%	79.85%
18	92.65%	60.51%	80.10%
19	89.39%	70.70%	82.09%
20	87.35%	75.16%	82.59%
21	91.02%	60.51%	79.10%
22	91.43%	60.51%	79.35%
23	93.88%	61.78%	81.34%
24	93.88%	60.51%	80.85%
25	95.10%	62.42%	82.34%
26	96.73%	63.06%	83.58%
27	94.69%	69.43%	84.83%
28	95.10%	59.24%	81.09%
29	96.33%	59.87%	82.09%
30	97.55%	47.13%	77.86%
31	95.92%	50.32%	78.11%

January 2019 PRC Shelter Population Trends

DATE	DOG POP	DOG KENNELS	POP/KENNELS	CAT POP	CAT CAGES	POP/KENNELS	TOTAL POP	TOTAL KENNEL	POP/KENNELS
1	250	245	102.04%	101	157	64.33%	351	402	87.31%
2	249	245	101.63%	103	157	65.61%	352	402	87.56%
3	234	245	95.51%	100	157	63.69%	334	402	83.08%
4	230	245	93.88%	113	157	71.97%	343	402	85.32%
5	227	245	92.65%	110	157	70.06%	337	402	83.83%
6	222	245	90.61%	101	157	64.33%	323	402	80.35%
7	228	245	93.06%	96	157	61.15%	324	402	80.60%
8	238	245	97.14%	106	157	67.52%	344	402	85.57%
9	233	245	95.10%	120	157	76.43%	353	402	87.81%
10	233	245	95.10%	111	157	70.70%	344	402	85.57%
11	237	245	96.73%	95	157	60.51%	332	402	82.59%
12	263	245	107.35%	120	157	76.43%	383	402	95.27%
13	260	245	106.12%	121	157	77.07%	381	402	94.78%
14	251	245	102.45%	94	157	59.87%	345	402	85.82%
15	249	245	101.63%	91	157	57.96%	340	402	84.58%
16	240	245	97.96%	83	157	52.87%	323	402	80.35%
17	224	245	91.43%	97	157	61.78%	321	402	79.85%
18	227	245	92.65%	95	157	60.51%	322	402	80.10%
19	219	245	89.39%	111	157	70.70%	330	402	82.09%
20	214	245	87.35%	118	157	75.16%	332	402	82.59%
21	223	245	91.02%	95	157	60.51%	318	402	79.10%
22	224	245	91.43%	95	157	60.51%	319	402	79.35%
23	230	245	93.88%	97	157	61.78%	327	402	81.34%
24	230	245	93.88%	95	157	60.51%	325	402	80.85%
25	233	245	95.10%	98	157	62.42%	331	402	82.34%
26	237	245	96.73%	99	157	63.06%	336	402	83.58%
27	232	245	94.69%	109	157	69.43%	341	402	84.83%
28	233	245	95.10%	93	157	59.24%	326	402	81.09%
29	236	245	96.33%	94	157	59.87%	330	402	82.09%
30	239	245	97.55%	74	157	47.13%	313	402	77.86%
31	235	245	95.92%	79	157	50.32%	314	402	78.11%

* Dog Kennel Built Capacity includes Kennels AD, A, B, C, and D (E & F are excluded as medical treatment areas only)

** Cat Cages Built Capacity includes all Lobby Cages plus holding cages in rooms I, J & K

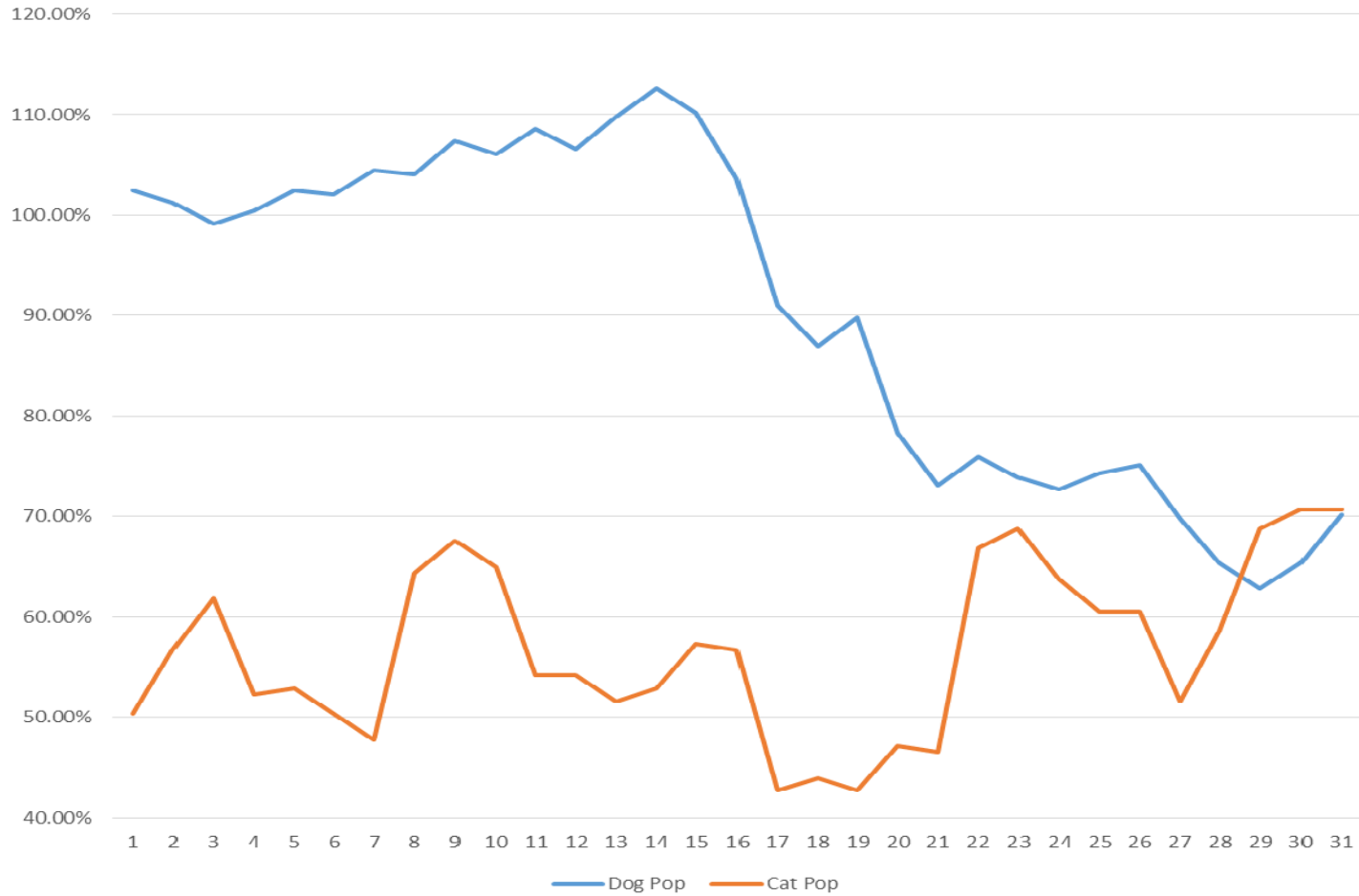


DATE	Dog Pop	Cat Pop	Shelter Pop
1	105.31%	68.15%	90.80%
2	96.33%	56.69%	80.85%
3	98.37%	49.68%	79.35%
4	97.55%	48.41%	78.36%
5	100.00%	47.77%	79.60%
6	101.63%	51.59%	82.09%
7	98.37%	48.41%	78.86%
8	95.92%	49.04%	77.61%
9	95.10%	49.04%	77.11%
10	93.47%	50.32%	76.62%
11	97.14%	42.68%	75.87%
12	95.10%	38.22%	72.89%
13	105.71%	51.59%	84.58%
14	99.18%	45.22%	78.11%
15	94.29%	44.59%	74.88%
16	92.24%	49.04%	75.37%
17	93.88%	49.04%	76.37%
18	95.10%	38.85%	73.13%
19	96.33%	39.49%	74.13%
20	96.73%	35.67%	72.89%
21	92.24%	40.13%	71.89%
22	97.55%	49.04%	78.61%
23	96.33%	50.32%	78.36%
24	100.82%	49.68%	80.85%
25	102.45%	52.87%	83.08%
26	104.08%	54.14%	84.58%
27	105.31%	50.96%	84.08%
28	101.22%	47.77%	80.35%

February 2019 PRC Shelter Population Trends

DATE	DOG POP	DOG KENNELS	POP/KENNELS	CAT POP	CAT CAGES	POP/KENNELS	TOTAL POP	TOTAL KENNEL	POP/KENNELS
1	258	245	105.31%	107	157	68.15%	365	402	90.80%
2	236	245	96.33%	89	157	56.69%	325	402	80.85%
3	241	245	98.37%	78	157	49.68%	319	402	79.35%
4	239	245	97.55%	76	157	48.41%	315	402	78.36%
5	245	245	100.00%	75	157	47.77%	320	402	79.60%
6	249	245	101.63%	81	157	51.59%	330	402	82.09%
7	241	245	98.37%	76	157	48.41%	317	402	78.86%
8	235	245	95.92%	77	157	49.04%	312	402	77.61%
9	233	245	95.10%	77	157	49.04%	310	402	77.11%
10	229	245	93.47%	79	157	50.32%	308	402	76.62%
11	238	245	97.14%	67	157	42.68%	305	402	75.87%
12	233	245	95.10%	60	157	38.22%	293	402	72.89%
13	259	245	105.71%	81	157	51.59%	340	402	84.58%
14	243	245	99.18%	71	157	45.22%	314	402	78.11%
15	231	245	94.29%	70	157	44.59%	301	402	74.88%
16	226	245	92.24%	77	157	49.04%	303	402	75.37%
17	230	245	93.88%	77	157	49.04%	307	402	76.37%
18	233	245	95.10%	61	157	38.85%	294	402	73.13%
19	236	245	96.33%	62	157	39.49%	298	402	74.13%
20	237	245	96.73%	56	157	35.67%	293	402	72.89%
21	226	245	92.24%	63	157	40.13%	289	402	71.89%
22	239	245	97.55%	77	157	49.04%	316	402	78.61%
23	236	245	96.33%	79	157	50.32%	315	402	78.36%
24	247	245	100.82%	78	157	49.68%	325	402	80.85%
25	251	245	102.45%	83	157	52.87%	334	402	83.08%
26	255	245	104.08%	85	157	54.14%	340	402	84.58%
27	258	245	105.31%	80	157	50.96%	338	402	84.08%
28	248	245	101.22%	75	157	47.77%	323	402	80.35%
*	Dog Kennel Built Capacity includes Kennels AD, A, B, C, and D (E & F are excluded as medical treatment areas only)								
**	Cat Cages Built Capacity includes all Lobby Cages plus holding cages in rooms I, J & K								

March 2019 Shelter Population Trends

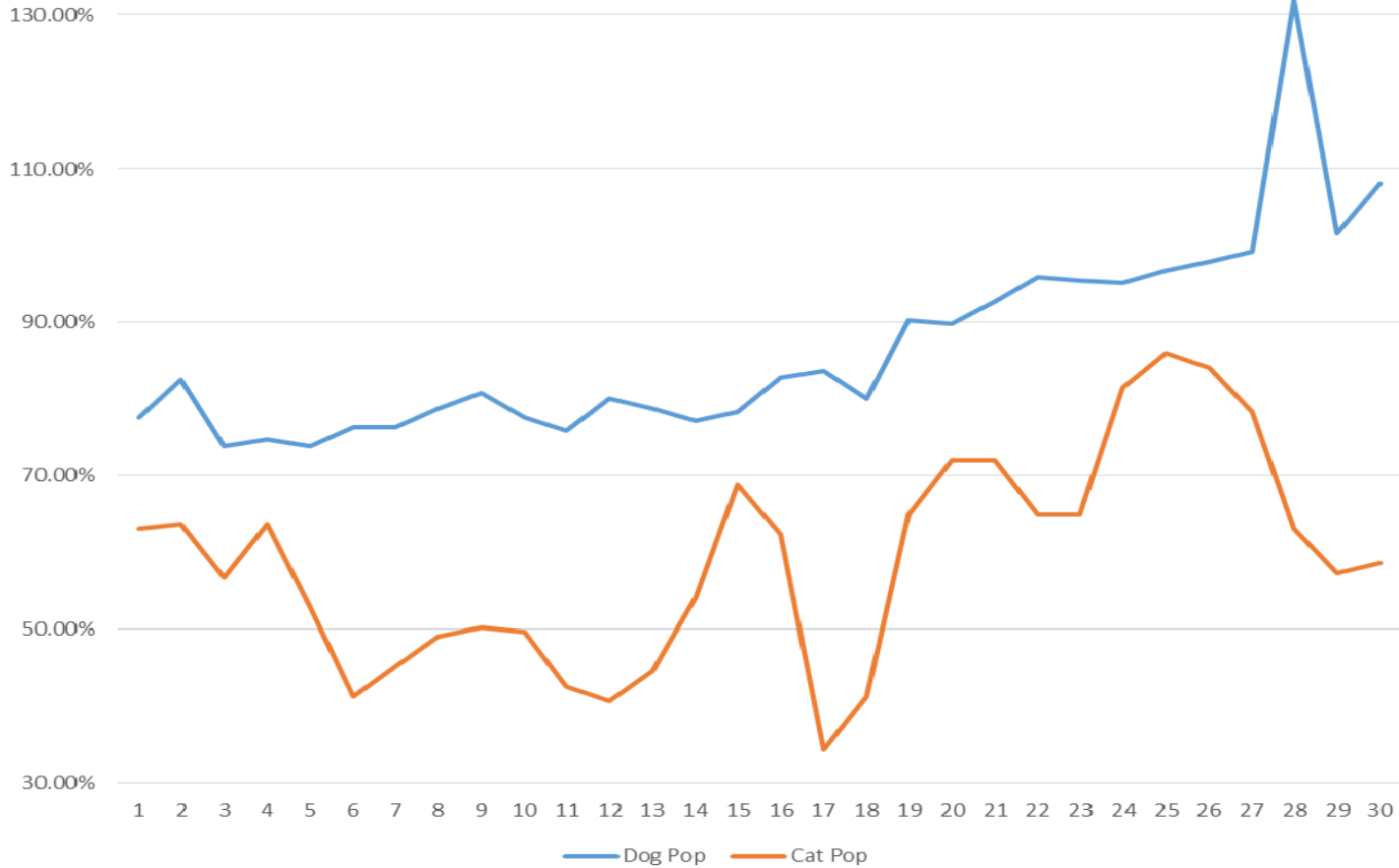


DATE	Dog Pop	Cat Pop	Shelter Pop
1	102.45%	50.32%	82.09%
2	101.22%	56.69%	83.83%
3	99.18%	61.78%	84.58%
4	100.41%	52.23%	81.59%
5	102.45%	52.87%	83.08%
6	102.04%	50.32%	81.84%
7	104.49%	47.77%	82.34%
8	104.08%	64.33%	88.56%
9	107.35%	67.52%	91.79%
10	106.12%	64.97%	90.05%
11	108.57%	54.14%	87.31%
12	106.53%	54.14%	86.07%
13	109.80%	51.59%	87.06%
14	112.65%	52.87%	89.30%
15	110.20%	57.32%	89.55%
16	103.67%	56.69%	85.32%
17	91.02%	42.68%	72.14%
18	86.94%	43.95%	70.15%
19	89.80%	42.68%	71.39%
20	78.37%	47.13%	66.17%
21	73.06%	46.50%	62.69%
22	75.92%	66.88%	72.39%
23	73.88%	68.79%	71.89%
24	72.65%	63.69%	69.15%
25	74.29%	60.51%	68.91%
26	75.10%	60.51%	69.40%
27	69.80%	51.59%	62.69%
28	65.31%	58.60%	62.69%
29	62.86%	68.79%	65.17%
30	65.31%	70.70%	67.41%
31	70.20%	70.70%	70.40%

March 2019 PRC Shelter Population Trends

DATE	DOG POP	DOG KENNELS	POP/KENNELS	CAT POP	CAT CAGES	POP/KENNELS	TOTAL POP	TOTAL KENNEL	POP/KENNELS
1	251	245	102.45%	79	157	50.32%	330	402	82.09%
2	248	245	101.22%	89	157	56.69%	337	402	83.83%
3	243	245	99.18%	97	157	61.78%	340	402	84.58%
4	246	245	100.41%	82	157	52.23%	328	402	81.59%
5	251	245	102.45%	83	157	52.87%	334	402	83.08%
6	250	245	102.04%	79	157	50.32%	329	402	81.84%
7	256	245	104.49%	75	157	47.77%	331	402	82.34%
8	255	245	104.08%	101	157	64.33%	356	402	88.56%
9	263	245	107.35%	106	157	67.52%	369	402	91.79%
10	260	245	106.12%	102	157	64.97%	362	402	90.05%
11	266	245	108.57%	85	157	54.14%	351	402	87.31%
12	261	245	106.53%	85	157	54.14%	346	402	86.07%
13	269	245	109.80%	81	157	51.59%	350	402	87.06%
14	276	245	112.65%	83	157	52.87%	359	402	89.30%
15	270	245	110.20%	90	157	57.32%	360	402	89.55%
16	254	245	103.67%	89	157	56.69%	343	402	85.32%
17	223	245	91.02%	67	157	42.68%	290	402	72.14%
18	213	245	86.94%	69	157	43.95%	282	402	70.15%
19	220	245	89.80%	67	157	42.68%	287	402	71.39%
20	192	245	78.37%	74	157	47.13%	266	402	66.17%
21	179	245	73.06%	73	157	46.50%	252	402	62.69%
22	186	245	75.92%	105	157	66.88%	291	402	72.39%
23	181	245	73.88%	108	157	68.79%	289	402	71.89%
24	178	245	72.65%	100	157	63.69%	278	402	69.15%
25	182	245	74.29%	95	157	60.51%	277	402	68.91%
26	184	245	75.10%	95	157	60.51%	279	402	69.40%
27	171	245	69.80%	81	157	51.59%	252	402	62.69%
28	160	245	65.31%	92	157	58.60%	252	402	62.69%
29	154	245	62.86%	108	157	68.79%	262	402	65.17%
30	160	245	65.31%	111	157	70.70%	271	402	67.41%
31	172	245	70.20%	111	157	70.70%	283	402	70.40%
*	Dog Kennel Built Capacity includes Kennels AD, A, B, C, and D (E & F are excluded as medical treatment areas only)								
**	Cat Cages Built Capacity includes all Lobby Cages plus holding cages in rooms I, J & K								

April 2019 Shelter Population Trends



DATE	Dog Pop	Cat Pop	Shelter Pop
1	77.55%	63.06%	71.89%
2	82.45%	63.69%	75.12%
3	73.88%	56.69%	67.16%
4	74.69%	63.69%	70.40%
5	73.88%	52.87%	65.67%
6	76.33%	41.40%	62.69%
7	76.33%	45.22%	64.18%
8	78.78%	49.04%	67.16%
9	80.82%	50.32%	68.91%
10	77.55%	49.68%	66.67%
11	75.92%	42.68%	62.94%
12	80.00%	40.76%	64.68%
13	78.78%	44.59%	65.42%
14	77.14%	54.14%	68.16%
15	78.37%	68.79%	74.63%
16	82.86%	62.42%	74.88%
17	83.67%	34.39%	64.43%
18	80.00%	41.40%	64.93%
19	90.20%	64.97%	80.35%
20	89.80%	71.97%	82.84%
21	92.65%	71.97%	84.58%
22	95.92%	64.97%	83.83%
23	95.51%	64.97%	83.58%
24	95.10%	81.53%	89.80%
25	96.73%	85.99%	92.54%
26	97.96%	84.08%	92.54%
27	99.18%	78.34%	91.04%
28	131.84%	63.06%	104.98%
29	101.63%	57.32%	84.33%
30	108.16%	58.60%	88.81%

April 2019 PRC Shelter Population Trends

DATE	DOG POP	DOG KENNELS	POP/KENNELS	CAT POP	CAT CAGES	POP/KENNELS	TOTAL POP	TOTAL KENNEL	POP/KENNELS
1	190	245	77.55%	99	157	63.06%	289	402	71.89%
2	202	245	82.45%	100	157	63.69%	302	402	75.12%
3	181	245	73.88%	89	157	56.69%	270	402	67.16%
4	183	245	74.69%	100	157	63.69%	283	402	70.40%
5	181	245	73.88%	83	157	52.87%	264	402	65.67%
6	187	245	76.33%	65	157	41.40%	252	402	62.69%
7	187	245	76.33%	71	157	45.22%	258	402	64.18%
8	193	245	78.78%	77	157	49.04%	270	402	67.16%
9	198	245	80.82%	79	157	50.32%	277	402	68.91%
10	190	245	77.55%	78	157	49.68%	268	402	66.67%
11	186	245	75.92%	67	157	42.68%	253	402	62.94%
12	196	245	80.00%	64	157	40.76%	260	402	64.68%
13	193	245	78.78%	70	157	44.59%	263	402	65.42%
14	189	245	77.14%	85	157	54.14%	274	402	68.16%
15	192	245	78.37%	108	157	68.79%	300	402	74.63%
16	203	245	82.86%	98	157	62.42%	301	402	74.88%
17	205	245	83.67%	54	157	34.39%	259	402	64.43%
18	196	245	80.00%	65	157	41.40%	261	402	64.93%
19	221	245	90.20%	102	157	64.97%	323	402	80.35%
20	220	245	89.80%	113	157	71.97%	333	402	82.84%
21	227	245	92.65%	113	157	71.97%	340	402	84.58%
22	235	245	95.92%	102	157	64.97%	337	402	83.83%
23	234	245	95.51%	102	157	64.97%	336	402	83.58%
24	233	245	95.10%	128	157	81.53%	361	402	89.80%
25	237	245	96.73%	135	157	85.99%	372	402	92.54%
26	240	245	97.96%	132	157	84.08%	372	402	92.54%
27	243	245	99.18%	123	157	78.34%	366	402	91.04%
28	323	245	131.84%	99	157	63.06%	422	402	104.98%
29	249	245	101.63%	90	157	57.32%	339	402	84.33%
30	265	245	108.16%	92	157	58.60%	357	402	88.81%

* Dog Kennel Built Capacity includes Kennels AD, A, B, C, and D (E & F are excluded as medical treatment areas only)

** Cat Cages Built Capacity includes all Lobby Cages plus holding cages in rooms I, J & K