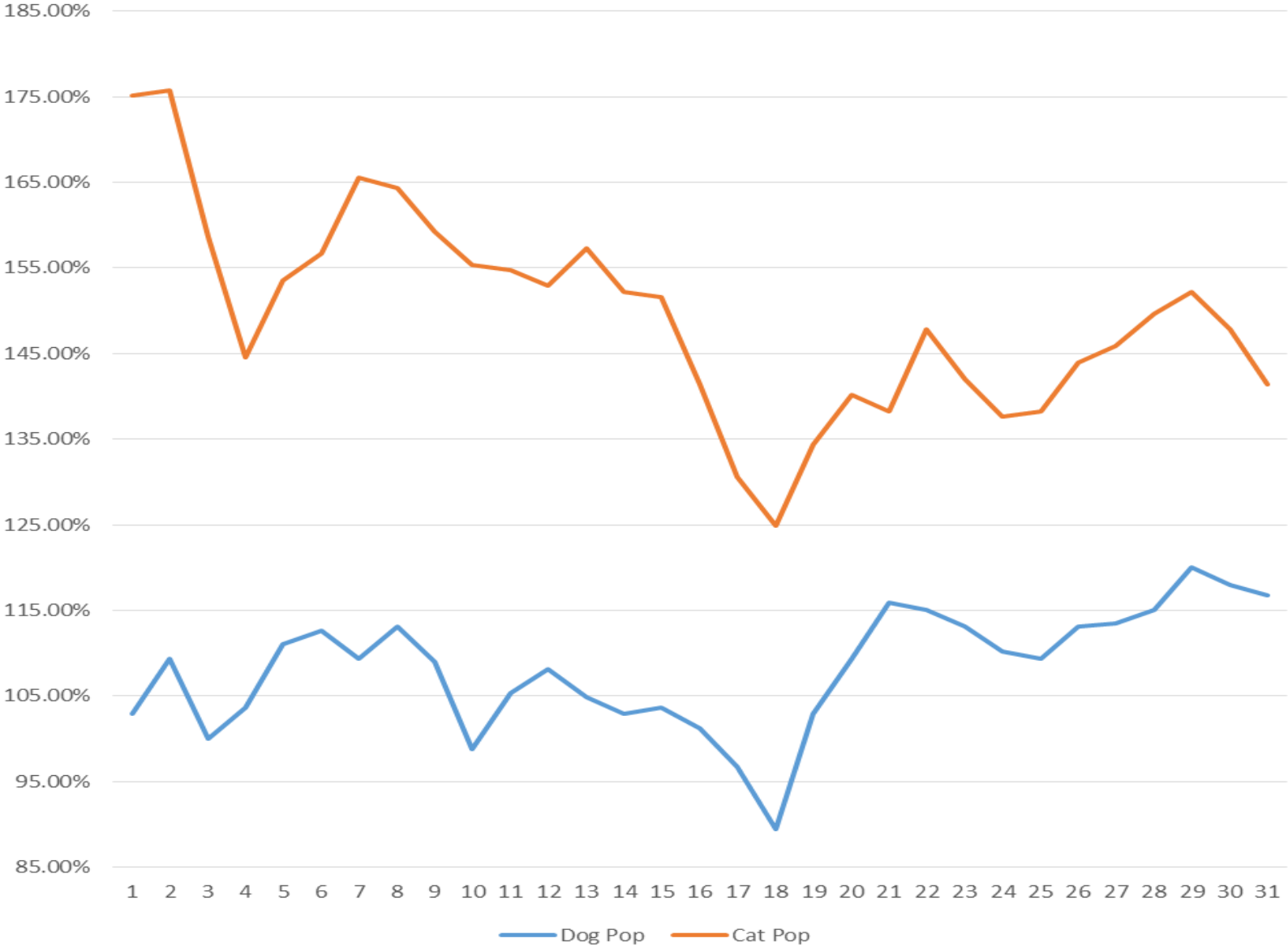


January 2016 PRC Shelter Population Trends



DATE	Dog Pop	Cat Pop	Shelter Pop
1	102.86%	175.16%	131.09%
2	109.39%	175.80%	135.32%
3	100.00%	158.60%	122.89%
4	103.67%	144.59%	119.65%
5	111.02%	153.50%	127.61%
6	112.65%	156.69%	129.85%
7	109.39%	165.61%	131.34%
8	113.06%	164.33%	133.08%
9	108.98%	159.24%	128.61%
10	98.78%	155.41%	120.90%
11	105.31%	154.78%	124.63%
12	108.16%	152.87%	125.62%
13	104.90%	157.32%	125.37%
14	102.86%	152.23%	122.14%
15	103.67%	151.59%	122.39%
16	101.22%	141.40%	116.92%
17	96.73%	130.57%	109.95%
18	89.39%	124.84%	103.23%
19	102.86%	134.39%	115.17%
20	109.39%	140.13%	121.39%
21	115.92%	138.22%	124.63%
22	115.10%	147.77%	127.86%
23	113.06%	142.04%	124.38%
24	110.20%	137.58%	120.90%
25	109.39%	138.22%	120.65%
26	113.06%	143.95%	125.12%
27	113.47%	145.86%	126.12%
28	115.10%	149.68%	128.61%
29	120.00%	152.23%	132.59%
30	117.96%	147.77%	129.60%
31	116.73%	141.40%	126.37%

January 2016 PRC Shelter Population Trends

DATE	DOG POP	DOG KENNELS	POP/KENNELS	CAT POP	CAT CAGES	POP/KENNELS	TOTAL POP	TOTAL KENNEL	POP/KENNELS
1	252	245	102.86%	275	157	175.16%	527	402	131.09%
2	268	245	109.39%	276	157	175.80%	544	402	135.32%
3	245	245	100.00%	249	157	158.60%	494	402	122.89%
4	254	245	103.67%	227	157	144.59%	481	402	119.65%
5	272	245	111.02%	241	157	153.50%	513	402	127.61%
6	276	245	112.65%	246	157	156.69%	522	402	129.85%
7	268	245	109.39%	260	157	165.61%	528	402	131.34%
8	277	245	113.06%	258	157	164.33%	535	402	133.08%
9	267	245	108.98%	250	157	159.24%	517	402	128.61%
10	242	245	98.78%	244	157	155.41%	486	402	120.90%
11	258	245	105.31%	243	157	154.78%	501	402	124.63%
12	265	245	108.16%	240	157	152.87%	505	402	125.62%
13	257	245	104.90%	247	157	157.32%	504	402	125.37%
14	252	245	102.86%	239	157	152.23%	491	402	122.14%
15	254	245	103.67%	238	157	151.59%	492	402	122.39%
16	248	245	101.22%	222	157	141.40%	470	402	116.92%
17	237	245	96.73%	205	157	130.57%	442	402	109.95%
18	219	245	89.39%	196	157	124.84%	415	402	103.23%
19	252	245	102.86%	211	157	134.39%	463	402	115.17%
20	268	245	109.39%	220	157	140.13%	488	402	121.39%
21	284	245	115.92%	217	157	138.22%	501	402	124.63%
22	282	245	115.10%	232	157	147.77%	514	402	127.86%
23	277	245	113.06%	223	157	142.04%	500	402	124.38%
24	270	245	110.20%	216	157	137.58%	486	402	120.90%
25	268	245	109.39%	217	157	138.22%	485	402	120.65%
26	277	245	113.06%	226	157	143.95%	503	402	125.12%
27	278	245	113.47%	229	157	145.86%	507	402	126.12%
28	282	245	115.10%	235	157	149.68%	517	402	128.61%
29	294	245	120.00%	239	157	152.23%	533	402	132.59%
30	289	245	117.96%	232	157	147.77%	521	402	129.60%
31	286	245	116.73%	222	157	141.40%	508	402	126.37%

\* Dog Kennel Built Capacity includes Kennels AD, A, B, C, and D (E & F are excluded as medical treatment areas only)

\*\* Cat Cages Built Capacity includes all Lobby Cages plus holding cages in rooms I, J & K

February 2016 PRC Shelter Population Trends

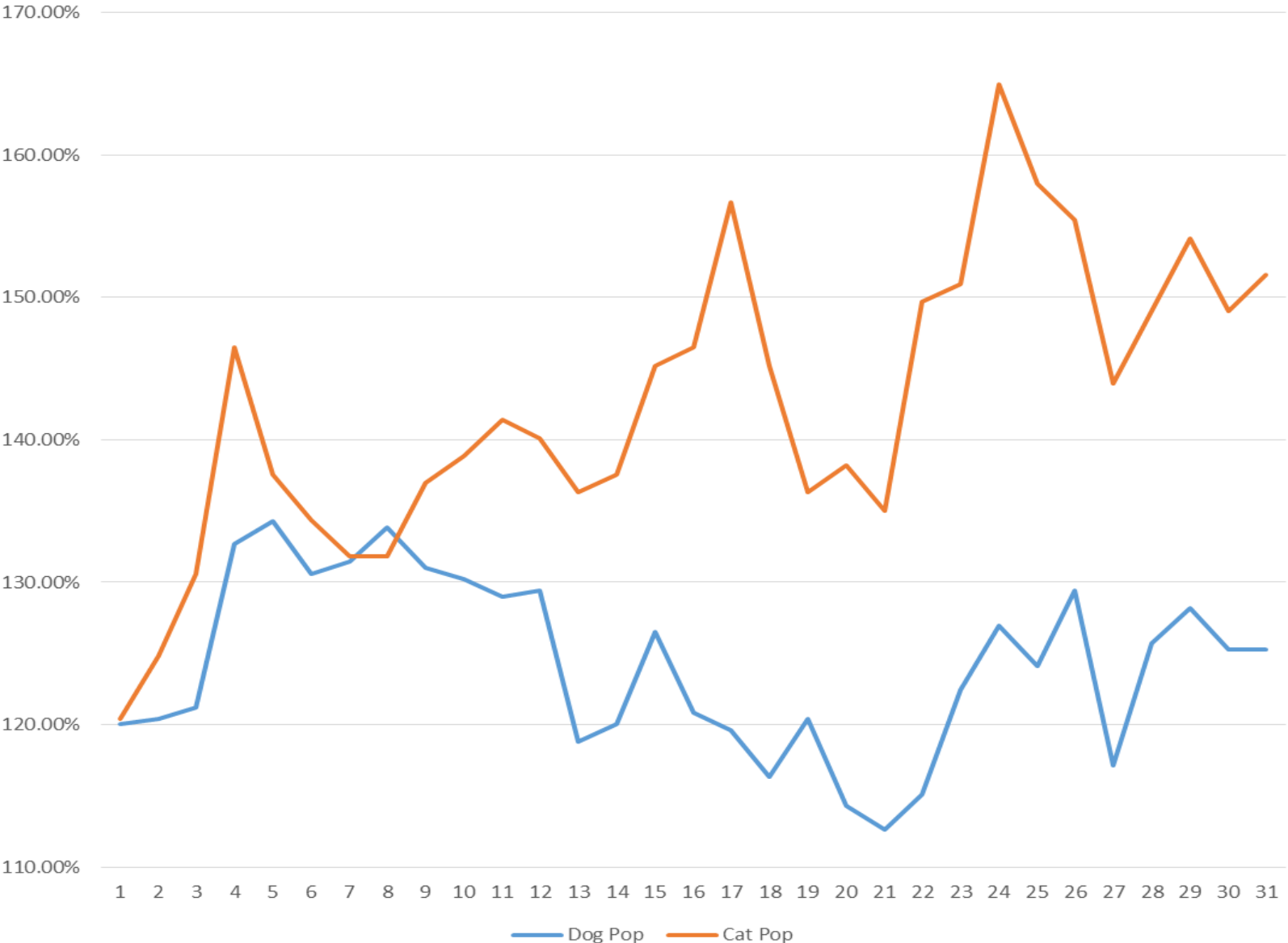


DATE	Dog Pop	Cat Pop	Shelter Pop
1	120.41%	143.31%	129.35%
2	123.27%	147.77%	132.84%
3	120.41%	152.23%	132.84%
4	123.27%	154.14%	135.32%
5	122.45%	149.68%	133.08%
6	117.55%	147.13%	129.10%
7	110.61%	132.48%	119.15%
8	113.47%	132.48%	120.90%
9	114.29%	135.67%	122.64%
10	114.69%	143.95%	126.12%
11	120.41%	150.96%	132.34%
12	128.16%	140.13%	132.84%
13	123.67%	136.31%	128.61%
14	117.96%	126.11%	121.14%
15	120.82%	128.66%	123.88%
16	122.86%	129.30%	125.37%
17	122.45%	117.83%	120.65%
18	123.67%	120.38%	122.39%
19	125.31%	112.10%	120.15%
20	126.12%	109.55%	119.65%
21	121.22%	105.10%	114.93%
22	119.59%	111.46%	116.42%
23	112.24%	115.92%	113.68%
24	106.94%	122.29%	112.94%
25	112.24%	119.11%	114.93%
26	112.24%	126.11%	117.66%
27	113.06%	120.38%	115.92%
28	113.47%	119.11%	115.67%
29	118.78%	112.74%	116.42%

February 2016 PRC Shelter Population Trends

DATE	DOG POP	DOG KENNELS	POP/KENNELS	CAT POP	CAT CAGES	POP/KENNELS	TOTAL POP	TOTAL KENNEL	POP/KENNELS
1	295	245	120.41%	225	157	143.31%	520	402	129.35%
2	302	245	123.27%	232	157	147.77%	534	402	132.84%
3	295	245	120.41%	239	157	152.23%	534	402	132.84%
4	302	245	123.27%	242	157	154.14%	544	402	135.32%
5	300	245	122.45%	235	157	149.68%	535	402	133.08%
6	288	245	117.55%	231	157	147.13%	519	402	129.10%
7	271	245	110.61%	208	157	132.48%	479	402	119.15%
8	278	245	113.47%	208	157	132.48%	486	402	120.90%
9	280	245	114.29%	213	157	135.67%	493	402	122.64%
10	281	245	114.69%	226	157	143.95%	507	402	126.12%
11	295	245	120.41%	237	157	150.96%	532	402	132.34%
12	314	245	128.16%	220	157	140.13%	534	402	132.84%
13	303	245	123.67%	214	157	136.31%	517	402	128.61%
14	289	245	117.96%	198	157	126.11%	487	402	121.14%
15	296	245	120.82%	202	157	128.66%	498	402	123.88%
16	301	245	122.86%	203	157	129.30%	504	402	125.37%
17	300	245	122.45%	185	157	117.83%	485	402	120.65%
18	303	245	123.67%	189	157	120.38%	492	402	122.39%
19	307	245	125.31%	176	157	112.10%	483	402	120.15%
20	309	245	126.12%	172	157	109.55%	481	402	119.65%
21	297	245	121.22%	165	157	105.10%	462	402	114.93%
22	293	245	119.59%	175	157	111.46%	468	402	116.42%
23	275	245	112.24%	182	157	115.92%	457	402	113.68%
24	262	245	106.94%	192	157	122.29%	454	402	112.94%
25	275	245	112.24%	187	157	119.11%	462	402	114.93%
26	275	245	112.24%	198	157	126.11%	473	402	117.66%
27	277	245	113.06%	189	157	120.38%	466	402	115.92%
28	278	245	113.47%	187	157	119.11%	465	402	115.67%
29	291	245	118.78%	177	157	112.74%	468	402	116.42%
*	Dog Kennel Built Capacity includes Kennels AD, A, B, C, and D (E & F are excluded as medical treatment areas only)								
**	Cat Cages Built Capacity includes all Lobby Cages plus holding cages in rooms I, J & K								

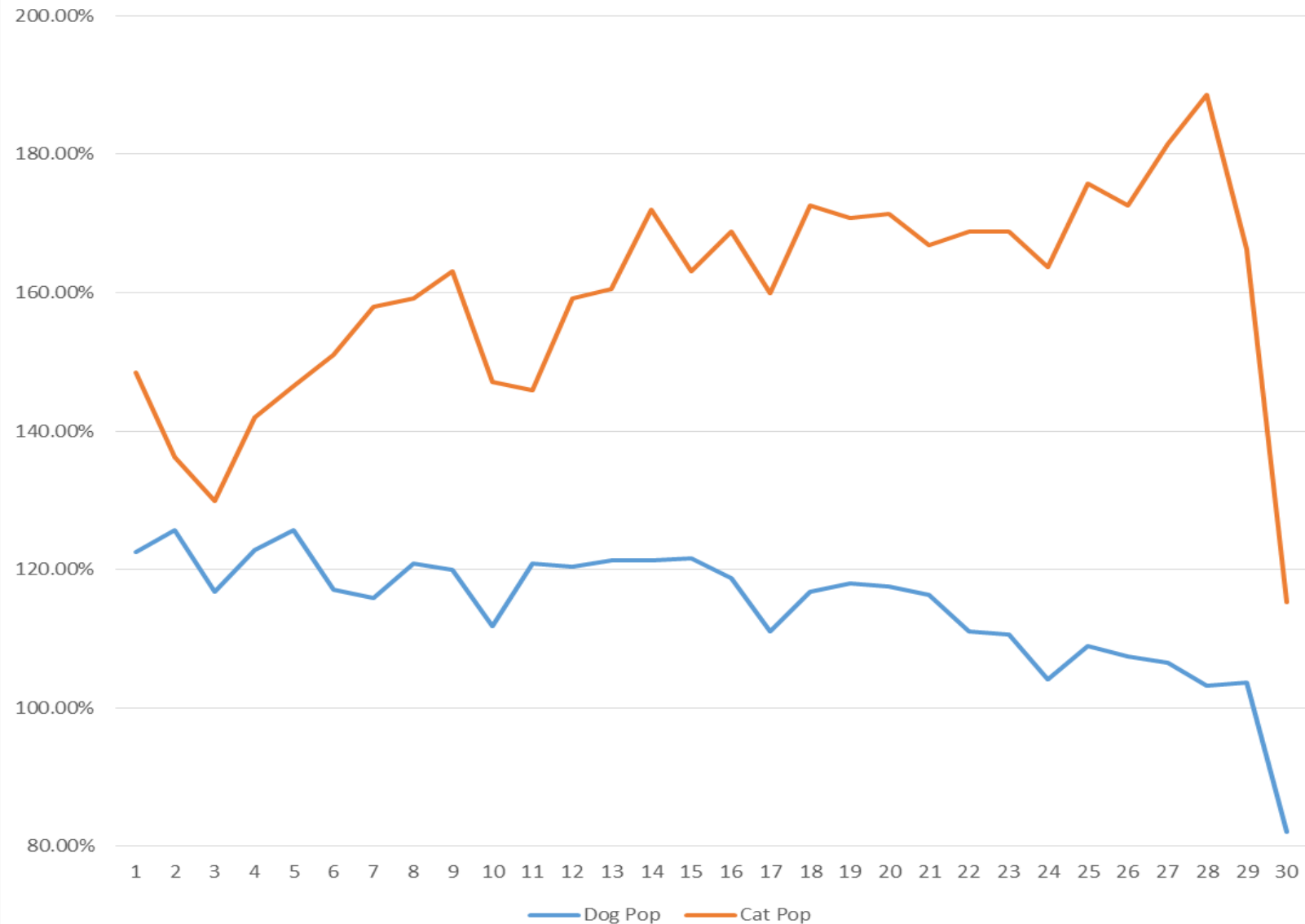
March 2016 PRC Shelter Population Trends



DATE	Dog Pop	Cat Pop	Shelter Pop
1	120.00%	120.38%	120.15%
2	120.41%	124.84%	122.14%
3	121.22%	130.57%	124.88%
4	132.65%	146.50%	138.06%
5	134.29%	137.58%	135.57%
6	130.61%	134.39%	132.09%
7	131.43%	131.85%	131.59%
8	133.88%	131.85%	133.08%
9	131.02%	136.94%	133.33%
10	130.20%	138.85%	133.58%
11	128.98%	141.40%	133.83%
12	129.39%	140.13%	133.58%
13	118.78%	136.31%	125.62%
14	120.00%	137.58%	126.87%
15	126.53%	145.22%	133.83%
16	120.82%	146.50%	130.85%
17	119.59%	156.69%	134.08%
18	116.33%	145.22%	127.61%
19	120.41%	136.31%	126.62%
20	114.29%	138.22%	123.63%
21	112.65%	135.03%	121.39%
22	115.10%	149.68%	128.61%
23	122.45%	150.96%	133.58%
24	126.94%	164.97%	141.79%
25	124.08%	157.96%	137.31%
26	129.39%	155.41%	139.55%
27	117.14%	143.95%	127.61%
28	125.71%	149.04%	134.83%
29	128.16%	154.14%	138.31%
30	125.31%	149.04%	134.58%
31	125.31%	151.59%	135.57%



April 2016 PRC Shelter Population Trends



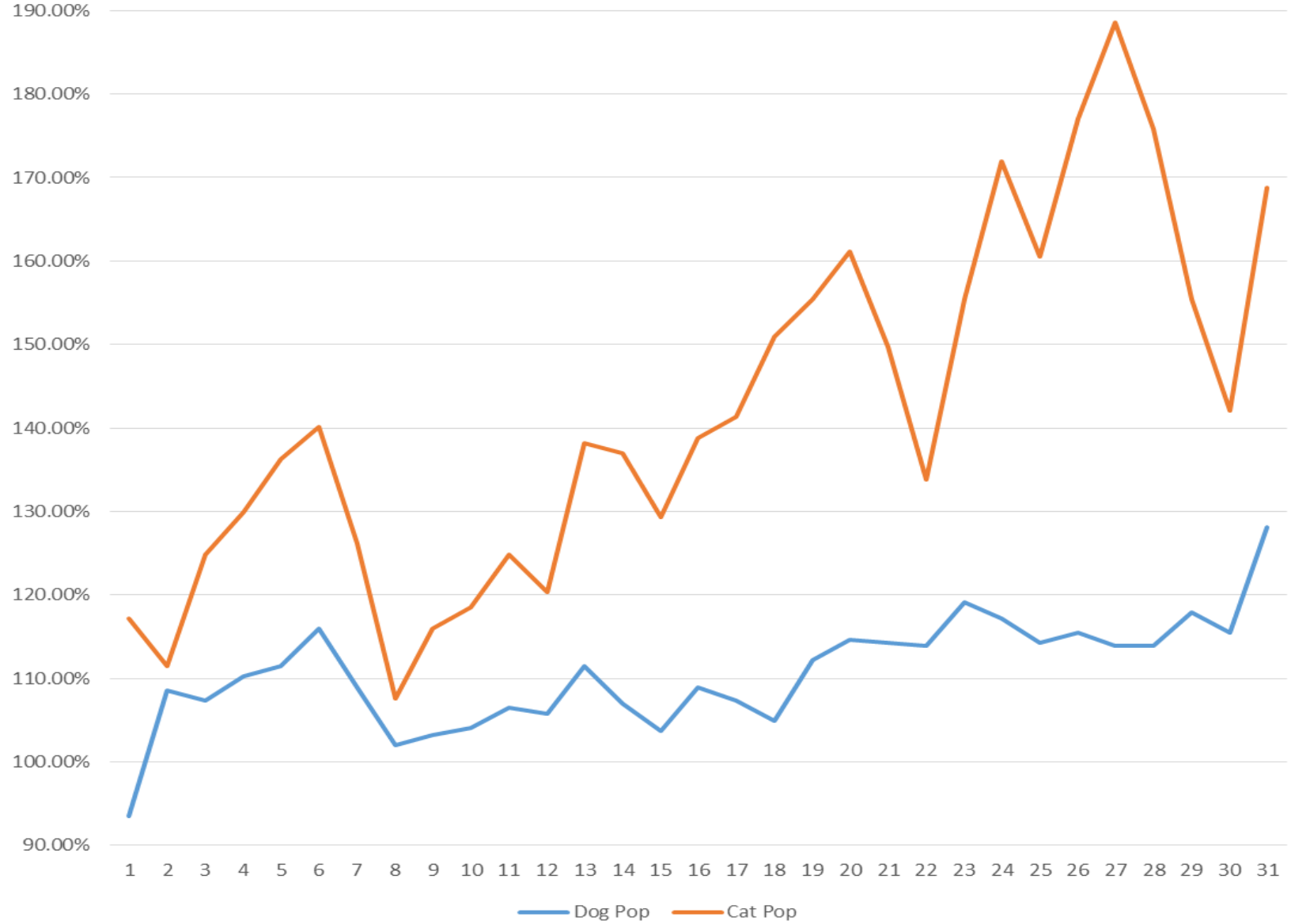
DATE	Dog Pop	Cat Pop	Shelter Pop
1	122.45%	148.41%	132.59%
2	125.71%	136.31%	129.85%
3	116.73%	129.94%	121.89%
4	122.86%	142.04%	130.35%
5	125.71%	146.50%	133.83%
6	117.14%	150.96%	130.35%
7	115.92%	157.96%	132.34%
8	120.82%	159.24%	135.82%
9	120.00%	163.06%	136.82%
10	111.84%	147.13%	125.62%
11	120.82%	145.86%	130.60%
12	120.41%	159.24%	135.57%
13	121.22%	160.51%	136.57%
14	121.22%	171.97%	141.04%
15	121.63%	163.06%	137.81%
16	118.78%	168.79%	138.31%
17	111.02%	159.87%	130.10%
18	116.73%	172.61%	138.56%
19	117.96%	170.70%	138.56%
20	117.55%	171.34%	138.56%
21	116.33%	166.88%	136.07%
22	111.02%	168.79%	133.58%
23	110.61%	168.79%	133.33%
24	104.08%	163.69%	127.36%
25	108.98%	175.80%	135.07%
26	107.35%	172.61%	132.84%
27	106.53%	181.53%	135.82%
28	103.27%	188.54%	136.57%
29	103.67%	166.24%	128.11%
30	82.04%	115.29%	95.02%

April 2016 PRC Shelter Population Trends

DATE	DOG POP	DOG KENNELS	POP/KENNELS	CAT POP	CAT CAGES	POP/KENNELS	TOTAL POP	TOTAL KENNEL	POP/KENNELS
1	300	245	122.45%	233	157	148.41%	533	402	132.59%
2	308	245	125.71%	214	157	136.31%	522	402	129.85%
3	286	245	116.73%	204	157	129.94%	490	402	121.89%
4	301	245	122.86%	223	157	142.04%	524	402	130.35%
5	308	245	125.71%	230	157	146.50%	538	402	133.83%
6	287	245	117.14%	237	157	150.96%	524	402	130.35%
7	284	245	115.92%	248	157	157.96%	532	402	132.34%
8	296	245	120.82%	250	157	159.24%	546	402	135.82%
9	294	245	120.00%	256	157	163.06%	550	402	136.82%
10	274	245	111.84%	231	157	147.13%	505	402	125.62%
11	296	245	120.82%	229	157	145.86%	525	402	130.60%
12	295	245	120.41%	250	157	159.24%	545	402	135.57%
13	297	245	121.22%	252	157	160.51%	549	402	136.57%
14	297	245	121.22%	270	157	171.97%	567	402	141.04%
15	298	245	121.63%	256	157	163.06%	554	402	137.81%
16	291	245	118.78%	265	157	168.79%	556	402	138.31%
17	272	245	111.02%	251	157	159.87%	523	402	130.10%
18	286	245	116.73%	271	157	172.61%	557	402	138.56%
19	289	245	117.96%	268	157	170.70%	557	402	138.56%
20	288	245	117.55%	269	157	171.34%	557	402	138.56%
21	285	245	116.33%	262	157	166.88%	547	402	136.07%
22	272	245	111.02%	265	157	168.79%	537	402	133.58%
23	271	245	110.61%	265	157	168.79%	536	402	133.33%
24	255	245	104.08%	257	157	163.69%	512	402	127.36%
25	267	245	108.98%	276	157	175.80%	543	402	135.07%
26	263	245	107.35%	271	157	172.61%	534	402	132.84%
27	261	245	106.53%	285	157	181.53%	546	402	135.82%
28	253	245	103.27%	296	157	188.54%	549	402	136.57%
29	254	245	103.67%	261	157	166.24%	515	402	128.11%
30	201	245	82.04%	181	157	115.29%	382	402	95.02%
*	Dog Kennel Built Capacity includes Kennels AD, A, B, C, and D (E & F are excluded as medical treatment areas only)								
**	Cat Cages Built Capacity includes all Lobby Cages plus holding cages in rooms I, J & K								



May 2016 PRC Shelter Population Trend



DATE	Dog Pop	Cat Pop	Shelter Pop
1	93.47%	117.20%	102.74%
2	108.57%	111.46%	109.70%
3	107.35%	124.84%	114.18%
4	110.20%	129.94%	117.91%
5	111.43%	136.31%	121.14%
6	115.92%	140.13%	125.37%
7	108.98%	126.11%	115.67%
8	102.04%	107.64%	104.23%
9	103.27%	115.92%	108.21%
10	104.08%	118.47%	109.70%
11	106.53%	124.84%	113.68%
12	105.71%	120.38%	111.44%
13	111.43%	138.22%	121.89%
14	106.94%	136.94%	118.66%
15	103.67%	129.30%	113.68%
16	108.98%	138.85%	120.65%
17	107.35%	141.40%	120.65%
18	104.90%	150.96%	122.89%
19	112.24%	155.41%	129.10%
20	114.69%	161.15%	132.84%
21	114.29%	149.68%	128.11%
22	113.88%	133.76%	121.64%
23	119.18%	155.41%	133.33%
24	117.14%	171.97%	138.56%
25	114.29%	160.51%	132.34%
26	115.51%	177.07%	139.55%
27	113.88%	188.54%	143.03%
28	113.88%	175.80%	138.06%
29	117.96%	155.41%	132.59%
30	115.51%	142.04%	125.87%
31	128.16%	168.79%	144.03%

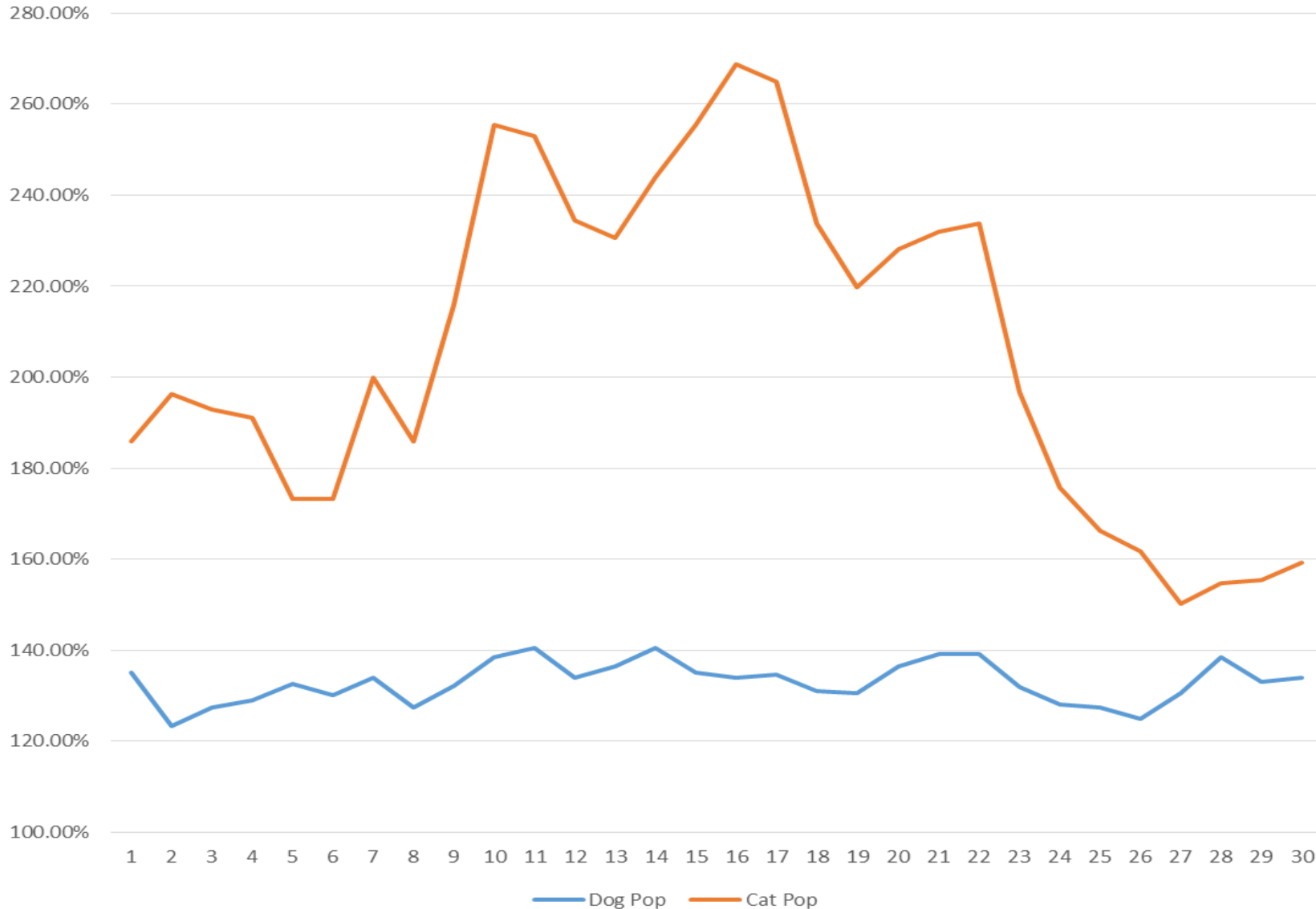
May 2016 PRC Shelter Population Trends

DATE	DOG POP	DOG KENNELS	POP/KENNELS	CAT POP	CAT CAGES	POP/KENNELS	TOTAL POP	TOTAL KENNEL	POP/KENNELS
1	229	245	93.47%	184	157	117.20%	413	402	102.74%
2	266	245	108.57%	175	157	111.46%	441	402	109.70%
3	263	245	107.35%	196	157	124.84%	459	402	114.18%
4	270	245	110.20%	204	157	129.94%	474	402	117.91%
5	273	245	111.43%	214	157	136.31%	487	402	121.14%
6	284	245	115.92%	220	157	140.13%	504	402	125.37%
7	267	245	108.98%	198	157	126.11%	465	402	115.67%
8	250	245	102.04%	169	157	107.64%	419	402	104.23%
9	253	245	103.27%	182	157	115.92%	435	402	108.21%
10	255	245	104.08%	186	157	118.47%	441	402	109.70%
11	261	245	106.53%	196	157	124.84%	457	402	113.68%
12	259	245	105.71%	189	157	120.38%	448	402	111.44%
13	273	245	111.43%	217	157	138.22%	490	402	121.89%
14	262	245	106.94%	215	157	136.94%	477	402	118.66%
15	254	245	103.67%	203	157	129.30%	457	402	113.68%
16	267	245	108.98%	218	157	138.85%	485	402	120.65%
17	263	245	107.35%	222	157	141.40%	485	402	120.65%
18	257	245	104.90%	237	157	150.96%	494	402	122.89%
19	275	245	112.24%	244	157	155.41%	519	402	129.10%
20	281	245	114.69%	253	157	161.15%	534	402	132.84%
21	280	245	114.29%	235	157	149.68%	515	402	128.11%
22	279	245	113.88%	210	157	133.76%	489	402	121.64%
23	292	245	119.18%	244	157	155.41%	536	402	133.33%
24	287	245	117.14%	270	157	171.97%	557	402	138.56%
25	280	245	114.29%	252	157	160.51%	532	402	132.34%
26	283	245	115.51%	278	157	177.07%	561	402	139.55%
27	279	245	113.88%	296	157	188.54%	575	402	143.03%
28	279	245	113.88%	276	157	175.80%	555	402	138.06%
29	289	245	117.96%	244	157	155.41%	533	402	132.59%
30	283	245	115.51%	223	157	142.04%	506	402	125.87%
31	314	245	128.16%	265	157	168.79%	579	402	144.03%

\* Dog Kennel Built Capacity includes Kennels AD, A, B, C, and D (E & F are excluded as medical treatment areas only)

\*\* Cat Cages Built Capacity includes all Lobby Cages plus holding cages in rooms I, J & K

June 2016 PRC Shelter Population Trends

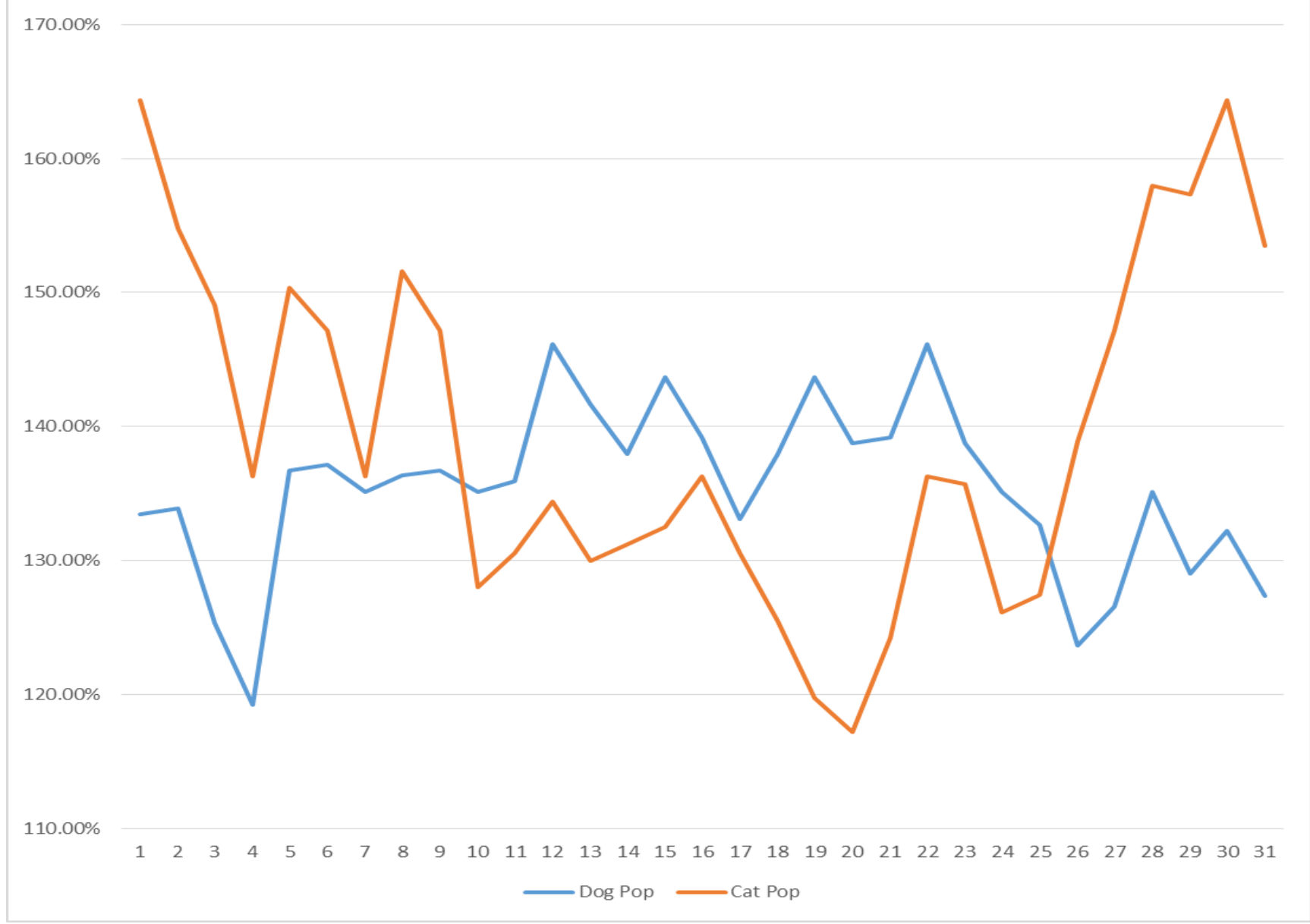


DATE	Dog Pop	Cat Pop	Shelter Pop
1	135.10%	185.99%	154.98%
2	123.27%	196.18%	151.74%
3	127.35%	192.99%	152.99%
4	128.98%	191.08%	153.23%
5	132.65%	173.25%	148.51%
6	130.20%	173.25%	147.01%
7	133.88%	200.00%	159.70%
8	127.35%	185.99%	150.25%
9	132.24%	215.92%	164.93%
10	138.37%	255.41%	184.08%
11	140.41%	252.87%	184.33%
12	133.88%	234.39%	173.13%
13	136.33%	230.57%	173.13%
14	140.41%	243.95%	180.85%
15	135.10%	255.41%	182.09%
16	133.88%	268.79%	186.57%
17	134.69%	264.97%	185.57%
18	131.02%	233.76%	171.14%
19	130.61%	219.75%	165.42%
20	136.33%	228.03%	172.14%
21	139.18%	231.85%	175.37%
22	139.18%	233.76%	176.12%
23	131.84%	196.82%	157.21%
24	128.16%	175.80%	146.77%
25	127.35%	166.24%	142.54%
26	124.90%	161.78%	139.30%
27	130.61%	150.32%	138.31%
28	138.37%	154.78%	144.78%
29	133.06%	155.41%	141.79%
30	133.88%	159.24%	143.78%

June 2016 PRC Shelter Population Trends

DATE	DOG POP	DOG KENNELS	POP/KENNELS	CAT POP	CAT CAGES	POP/KENNELS	TOTAL POP	TOTAL KENNEL	POP/KENNELS
1	331	245	135.10%	292	157	185.99%	623	402	154.98%
2	302	245	123.27%	308	157	196.18%	610	402	151.74%
3	312	245	127.35%	303	157	192.99%	615	402	152.99%
4	316	245	128.98%	300	157	191.08%	616	402	153.23%
5	325	245	132.65%	272	157	173.25%	597	402	148.51%
6	319	245	130.20%	272	157	173.25%	591	402	147.01%
7	328	245	133.88%	314	157	200.00%	642	402	159.70%
8	312	245	127.35%	292	157	185.99%	604	402	150.25%
9	324	245	132.24%	339	157	215.92%	663	402	164.93%
10	339	245	138.37%	401	157	255.41%	740	402	184.08%
11	344	245	140.41%	397	157	252.87%	741	402	184.33%
12	328	245	133.88%	368	157	234.39%	696	402	173.13%
13	334	245	136.33%	362	157	230.57%	696	402	173.13%
14	344	245	140.41%	383	157	243.95%	727	402	180.85%
15	331	245	135.10%	401	157	255.41%	732	402	182.09%
16	328	245	133.88%	422	157	268.79%	750	402	186.57%
17	330	245	134.69%	416	157	264.97%	746	402	185.57%
18	321	245	131.02%	367	157	233.76%	688	402	171.14%
19	320	245	130.61%	345	157	219.75%	665	402	165.42%
20	334	245	136.33%	358	157	228.03%	692	402	172.14%
21	341	245	139.18%	364	157	231.85%	705	402	175.37%
22	341	245	139.18%	367	157	233.76%	708	402	176.12%
23	323	245	131.84%	309	157	196.82%	632	402	157.21%
24	314	245	128.16%	276	157	175.80%	590	402	146.77%
25	312	245	127.35%	261	157	166.24%	573	402	142.54%
26	306	245	124.90%	254	157	161.78%	560	402	139.30%
27	320	245	130.61%	236	157	150.32%	556	402	138.31%
28	339	245	138.37%	243	157	154.78%	582	402	144.78%
29	326	245	133.06%	244	157	155.41%	570	402	141.79%
30	328	245	133.88%	250	157	159.24%	578	402	143.78%
*	Dog Kennel Built Capacity includes Kennels AD, A, B, C, and D (E & F are excluded as medical treatment areas only)								
**	Cat Cages Built Capacity includes all Lobby Cages plus holding cages in rooms I, J & K								

July 2016 PRC Shelter Population Trends



DATE	Dog Pop	Cat Pop	Shelter Pop
1	133.47%	164.33%	145.52%
2	133.88%	154.78%	142.04%
3	125.31%	149.04%	134.58%
4	119.18%	136.31%	125.87%
5	136.73%	150.32%	142.04%
6	137.14%	147.13%	141.04%
7	135.10%	136.31%	135.57%
8	136.33%	151.59%	142.29%
9	136.73%	147.13%	140.80%
10	135.10%	128.03%	132.34%
11	135.92%	130.57%	133.83%
12	146.12%	134.39%	141.54%
13	141.63%	129.94%	137.06%
14	137.96%	131.21%	135.32%
15	143.67%	132.48%	139.30%
16	139.18%	136.31%	138.06%
17	133.06%	130.57%	132.09%
18	137.96%	125.48%	133.08%
19	143.67%	119.75%	134.33%
20	138.78%	117.20%	130.35%
21	139.18%	124.20%	133.33%
22	146.12%	136.31%	142.29%
23	138.78%	135.67%	137.56%
24	135.10%	126.11%	131.59%
25	132.65%	127.39%	130.60%
26	123.67%	138.85%	129.60%
27	126.53%	147.13%	134.58%
28	135.10%	157.96%	144.03%
29	128.98%	157.32%	140.05%
30	132.24%	164.33%	144.78%
31	127.35%	153.50%	137.56%

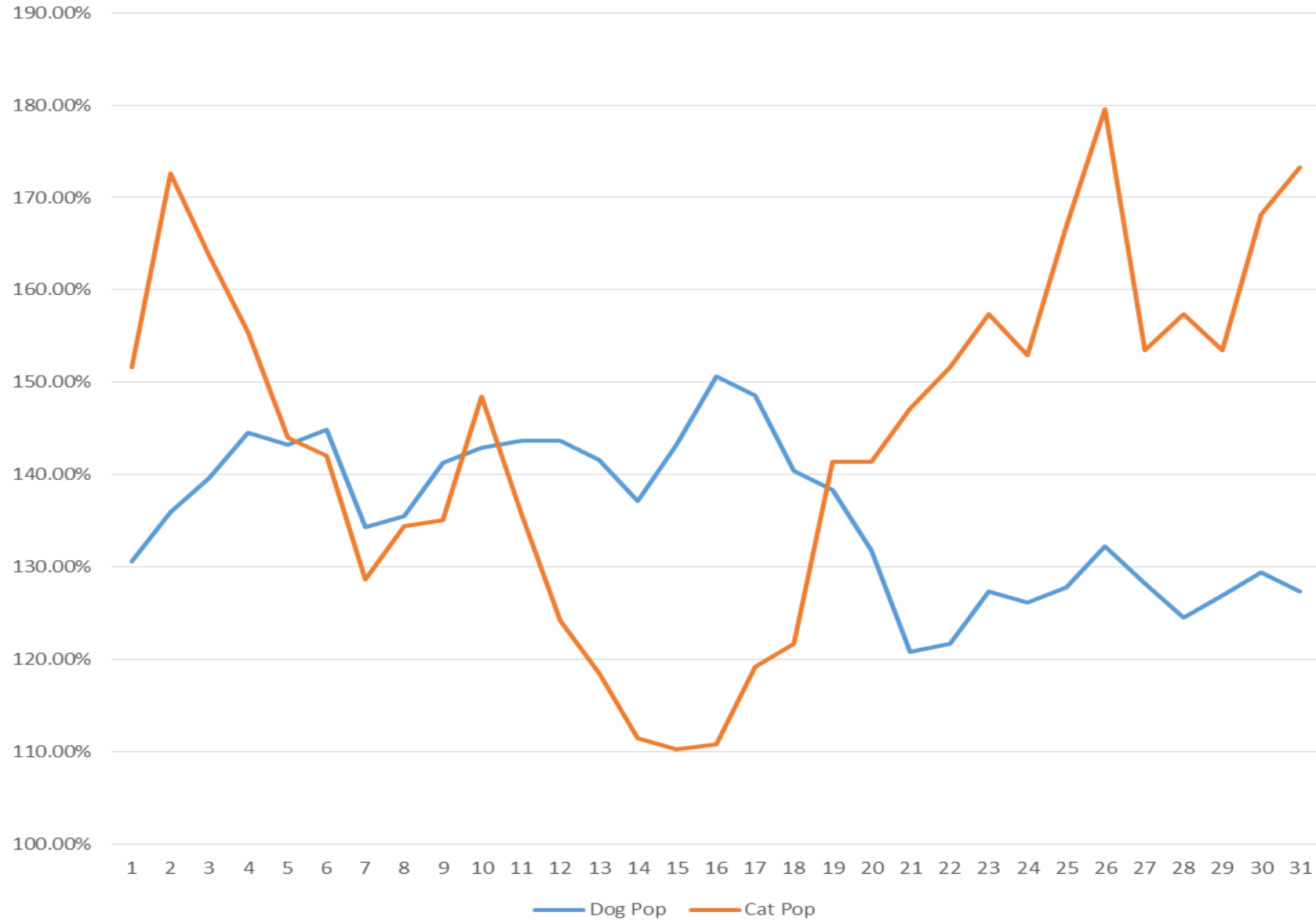
July 2016 PRC Shelter Population Trends

DATE	DOG POP	DOG KENNELS	POP/KENNELS	CAT POP	CAT CAGES	POP/KENNELS	TOTAL POP	TOTAL KENNEL	POP/KENNELS
1	327	245	133.47%	258	157	164.33%	585	402	145.52%
2	328	245	133.88%	243	157	154.78%	571	402	142.04%
3	307	245	125.31%	234	157	149.04%	541	402	134.58%
4	292	245	119.18%	214	157	136.31%	506	402	125.87%
5	335	245	136.73%	236	157	150.32%	571	402	142.04%
6	336	245	137.14%	231	157	147.13%	567	402	141.04%
7	331	245	135.10%	214	157	136.31%	545	402	135.57%
8	334	245	136.33%	238	157	151.59%	572	402	142.29%
9	335	245	136.73%	231	157	147.13%	566	402	140.80%
10	331	245	135.10%	201	157	128.03%	532	402	132.34%
11	333	245	135.92%	205	157	130.57%	538	402	133.83%
12	358	245	146.12%	211	157	134.39%	569	402	141.54%
13	347	245	141.63%	204	157	129.94%	551	402	137.06%
14	338	245	137.96%	206	157	131.21%	544	402	135.32%
15	352	245	143.67%	208	157	132.48%	560	402	139.30%
16	341	245	139.18%	214	157	136.31%	555	402	138.06%
17	326	245	133.06%	205	157	130.57%	531	402	132.09%
18	338	245	137.96%	197	157	125.48%	535	402	133.08%
19	352	245	143.67%	188	157	119.75%	540	402	134.33%
20	340	245	138.78%	184	157	117.20%	524	402	130.35%
21	341	245	139.18%	195	157	124.20%	536	402	133.33%
22	358	245	146.12%	214	157	136.31%	572	402	142.29%
23	340	245	138.78%	213	157	135.67%	553	402	137.56%
24	331	245	135.10%	198	157	126.11%	529	402	131.59%
25	325	245	132.65%	200	157	127.39%	525	402	130.60%
26	303	245	123.67%	218	157	138.85%	521	402	129.60%
27	310	245	126.53%	231	157	147.13%	541	402	134.58%
28	331	245	135.10%	248	157	157.96%	579	402	144.03%
29	316	245	128.98%	247	157	157.32%	563	402	140.05%
30	324	245	132.24%	258	157	164.33%	582	402	144.78%
31	312	245	127.35%	241	157	153.50%	553	402	137.56%

\* Dog Kennel Built Capacity includes Kennels AD, A, B, C, and D (E & F are excluded as medical treatment areas only)

\*\* Cat Cages Built Capacity includes all Lobby Cages plus holding cages in rooms I, J & K

August 2016 PRC Shelter Population Trends



DATE	Dog Pop	Cat Pop	Shelter Pop
1	130.61%	151.59%	138.81%
2	135.92%	172.61%	150.25%
3	139.59%	163.69%	149.00%
4	144.49%	155.41%	148.76%
5	143.27%	143.95%	143.53%
6	144.90%	142.04%	143.78%
7	134.29%	128.66%	132.09%
8	135.51%	134.39%	135.07%
9	141.22%	135.03%	138.81%
10	142.86%	148.41%	145.02%
11	143.67%	135.67%	140.55%
12	143.67%	124.20%	136.07%
13	141.63%	118.47%	132.59%
14	137.14%	111.46%	127.11%
15	143.27%	110.19%	130.35%
16	150.61%	110.83%	135.07%
17	148.57%	119.11%	137.06%
18	140.41%	121.66%	133.08%
19	138.37%	141.40%	139.55%
20	131.84%	141.40%	135.57%
21	120.82%	147.13%	131.09%
22	121.63%	151.59%	133.33%
23	127.35%	157.32%	139.05%
24	126.12%	152.87%	136.57%
25	127.76%	166.88%	143.03%
26	132.24%	179.62%	150.75%
27	128.16%	153.50%	138.06%
28	124.49%	157.32%	137.31%
29	126.94%	153.50%	137.31%
30	129.39%	168.15%	144.53%
31	127.35%	173.25%	145.27%

August 2016 PRC Shelter Population Trends

DATE	DOG POP	DOG KENNELS	POP/KENNELS	CAT POP	CAT CAGES	POP/KENNELS	TOTAL POP	TOTAL KENNEL	POP/KENNELS
1	320	245	130.61%	238	157	151.59%	558	402	138.81%
2	333	245	135.92%	271	157	172.61%	604	402	150.25%
3	342	245	139.59%	257	157	163.69%	599	402	149.00%
4	354	245	144.49%	244	157	155.41%	598	402	148.76%
5	351	245	143.27%	226	157	143.95%	577	402	143.53%
6	355	245	144.90%	223	157	142.04%	578	402	143.78%
7	329	245	134.29%	202	157	128.66%	531	402	132.09%
8	332	245	135.51%	211	157	134.39%	543	402	135.07%
9	346	245	141.22%	212	157	135.03%	558	402	138.81%
10	350	245	142.86%	233	157	148.41%	583	402	145.02%
11	352	245	143.67%	213	157	135.67%	565	402	140.55%
12	352	245	143.67%	195	157	124.20%	547	402	136.07%
13	347	245	141.63%	186	157	118.47%	533	402	132.59%
14	336	245	137.14%	175	157	111.46%	511	402	127.11%
15	351	245	143.27%	173	157	110.19%	524	402	130.35%
16	369	245	150.61%	174	157	110.83%	543	402	135.07%
17	364	245	148.57%	187	157	119.11%	551	402	137.06%
18	344	245	140.41%	191	157	121.66%	535	402	133.08%
19	339	245	138.37%	222	157	141.40%	561	402	139.55%
20	323	245	131.84%	222	157	141.40%	545	402	135.57%
21	296	245	120.82%	231	157	147.13%	527	402	131.09%
22	298	245	121.63%	238	157	151.59%	536	402	133.33%
23	312	245	127.35%	247	157	157.32%	559	402	139.05%
24	309	245	126.12%	240	157	152.87%	549	402	136.57%
25	313	245	127.76%	262	157	166.88%	575	402	143.03%
26	324	245	132.24%	282	157	179.62%	606	402	150.75%
27	314	245	128.16%	241	157	153.50%	555	402	138.06%
28	305	245	124.49%	247	157	157.32%	552	402	137.31%
29	311	245	126.94%	241	157	153.50%	552	402	137.31%
30	317	245	129.39%	264	157	168.15%	581	402	144.53%
31	312	245	127.35%	272	157	173.25%	584	402	145.27%
*	Dog Kennel Built Capacity includes Kennels AD, A, B, C, and D (E & F are excluded as medical treatment areas only)								
**	Cat Cages Built Capacity includes all Lobby Cages plus holding cages in rooms I, J & K								



September 2016 PRC Shelter Population Trends

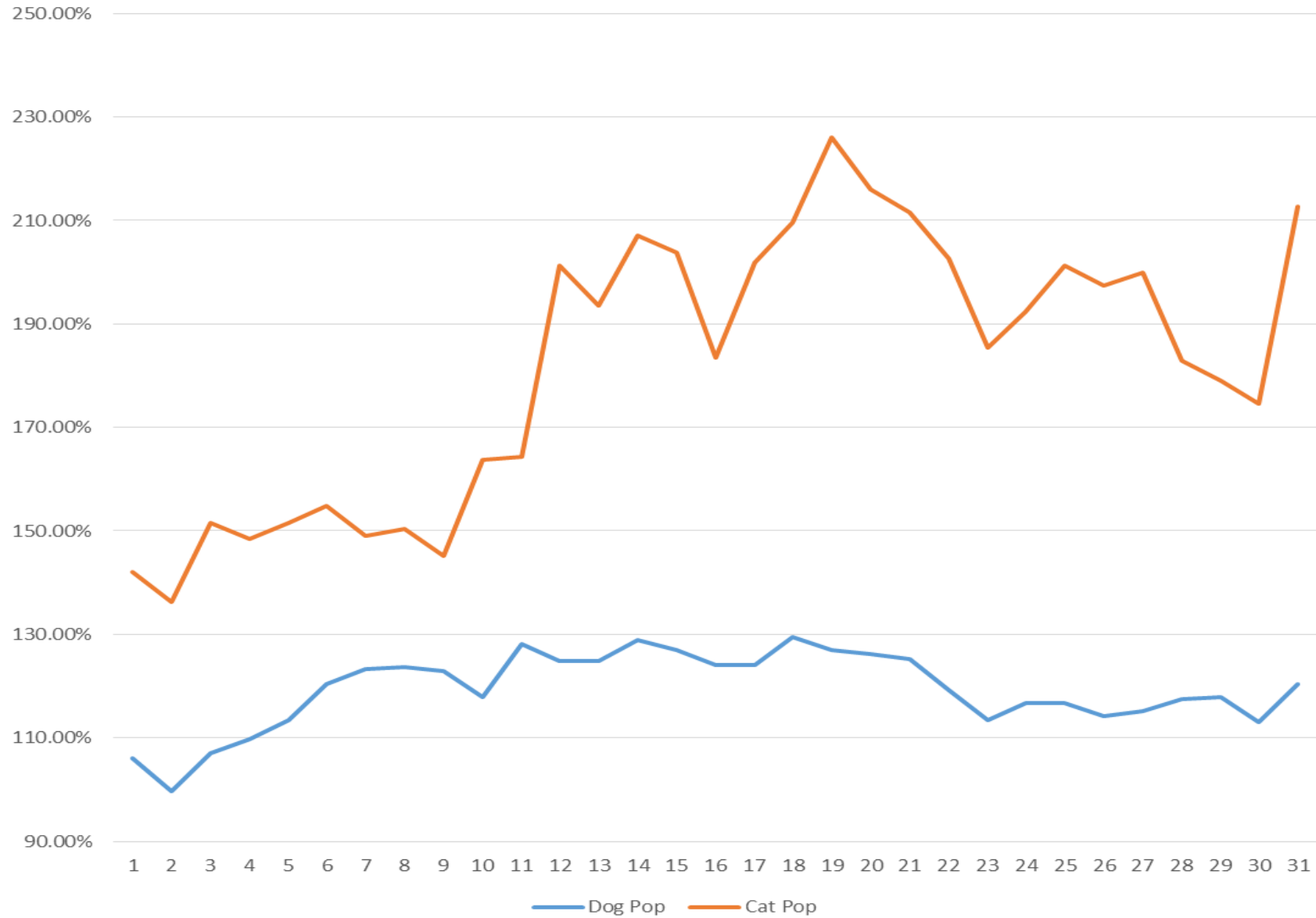


DATE	Dog Pop	Cat Pop	Shelter Pop
1	114.69%	162.42%	133.33%
2	129.39%	182.17%	150.00%
3	128.16%	170.70%	144.78%
4	121.22%	154.14%	134.08%
5	113.47%	132.48%	120.90%
6	124.90%	156.05%	137.06%
7	122.86%	159.24%	137.06%
8	114.69%	145.86%	126.87%
9	110.61%	145.86%	124.38%
10	108.16%	141.40%	121.14%
11	103.27%	138.85%	117.16%
12	106.53%	142.04%	120.40%
13	100.82%	139.49%	115.92%
14	104.49%	133.12%	115.67%
15	101.22%	134.39%	114.18%
16	108.57%	119.75%	112.94%
17	100.41%	120.38%	108.21%
18	93.88%	108.92%	99.75%
19	99.18%	117.20%	106.22%
20	98.78%	131.85%	111.69%
21	97.55%	128.03%	109.45%
22	103.27%	125.48%	111.94%
23	104.90%	120.38%	110.95%
24	102.04%	121.02%	109.45%
25	102.45%	114.01%	106.97%
26	104.49%	124.20%	112.19%
27	108.98%	125.48%	115.42%
28	100.00%	142.68%	116.67%
29	104.08%	144.59%	119.90%
30	108.16%	153.50%	125.87%

September 2016 PRC Shelter Population Trends

DATE	DOG POP	DOG KENNELS	POP/KENNELS	CAT POP	CAT CAGES	POP/KENNELS	TOTAL POP	TOTAL KENNEL	POP/KENNELS
1	281	245	114.69%	255	157	162.42%	536	402	133.33%
2	317	245	129.39%	286	157	182.17%	603	402	150.00%
3	314	245	128.16%	268	157	170.70%	582	402	144.78%
4	297	245	121.22%	242	157	154.14%	539	402	134.08%
5	278	245	113.47%	208	157	132.48%	486	402	120.90%
6	306	245	124.90%	245	157	156.05%	551	402	137.06%
7	301	245	122.86%	250	157	159.24%	551	402	137.06%
8	281	245	114.69%	229	157	145.86%	510	402	126.87%
9	271	245	110.61%	229	157	145.86%	500	402	124.38%
10	265	245	108.16%	222	157	141.40%	487	402	121.14%
11	253	245	103.27%	218	157	138.85%	471	402	117.16%
12	261	245	106.53%	223	157	142.04%	484	402	120.40%
13	247	245	100.82%	219	157	139.49%	466	402	115.92%
14	256	245	104.49%	209	157	133.12%	465	402	115.67%
15	248	245	101.22%	211	157	134.39%	459	402	114.18%
16	266	245	108.57%	188	157	119.75%	454	402	112.94%
17	246	245	100.41%	189	157	120.38%	435	402	108.21%
18	230	245	93.88%	171	157	108.92%	401	402	99.75%
19	243	245	99.18%	184	157	117.20%	427	402	106.22%
20	242	245	98.78%	207	157	131.85%	449	402	111.69%
21	239	245	97.55%	201	157	128.03%	440	402	109.45%
22	253	245	103.27%	197	157	125.48%	450	402	111.94%
23	257	245	104.90%	189	157	120.38%	446	402	110.95%
24	250	245	102.04%	190	157	121.02%	440	402	109.45%
25	251	245	102.45%	179	157	114.01%	430	402	106.97%
26	256	245	104.49%	195	157	124.20%	451	402	112.19%
27	267	245	108.98%	197	157	125.48%	464	402	115.42%
28	245	245	100.00%	224	157	142.68%	469	402	116.67%
29	255	245	104.08%	227	157	144.59%	482	402	119.90%
30	265	245	108.16%	241	157	153.50%	506	402	125.87%
* Dog Kennel Built Capacity includes Kennels AD, A, B, C, and D (E & F are excluded as medical treatment areas only)									
** Cat Cages Built Capacity includes all Lobby Cages plus holding cages in rooms I, J & K									

### October 2016 PRC Shelter Population Trends

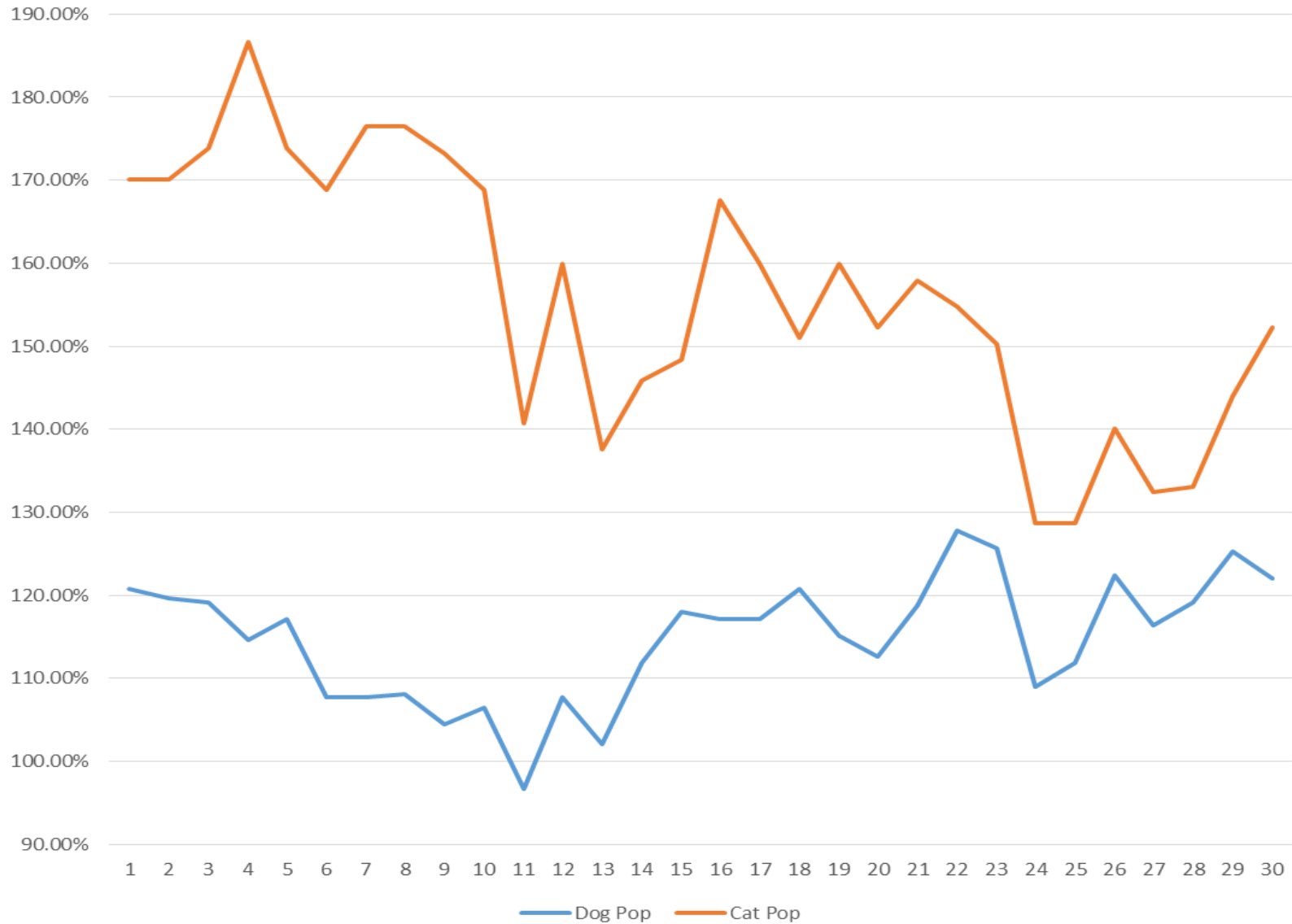


DATE	Dog Pop	Cat Pop	Shelter Pop
1	106.12%	142.04%	120.15%
2	99.59%	136.31%	113.93%
3	106.94%	151.59%	124.38%
4	109.80%	148.41%	124.88%
5	113.47%	151.59%	128.36%
6	120.41%	154.78%	133.83%
7	123.27%	149.04%	133.33%
8	123.67%	150.32%	134.08%
9	122.86%	145.22%	131.59%
10	117.96%	163.69%	135.82%
11	128.16%	164.33%	142.29%
12	124.90%	201.27%	154.73%
13	124.90%	193.63%	151.74%
14	128.98%	207.01%	159.45%
15	126.94%	203.82%	156.97%
16	124.08%	183.44%	147.26%
17	124.08%	201.91%	154.48%
18	129.39%	209.55%	160.70%
19	126.94%	226.11%	165.67%
20	126.12%	215.92%	161.19%
21	125.31%	211.46%	158.96%
22	119.18%	202.55%	151.74%
23	113.47%	185.35%	141.54%
24	116.73%	192.36%	146.27%
25	116.73%	201.27%	149.75%
26	114.29%	197.45%	146.77%
27	115.10%	200.00%	148.26%
28	117.55%	182.80%	143.03%
29	117.96%	178.98%	141.79%
30	113.06%	174.52%	137.06%
31	120.41%	212.74%	156.47%

October 2016 PRC Shelter Population Trends

DATE	DOG POP	DOG KENNELS	POP/KENNELS	CAT POP	CAT CAGES	POP/KENNELS	TOTAL POP	TOTAL KENNEL	POP/KENNELS
1	260	245	106.12%	223	157	142.04%	483	402	120.15%
2	244	245	99.59%	214	157	136.31%	458	402	113.93%
3	262	245	106.94%	238	157	151.59%	500	402	124.38%
4	269	245	109.80%	233	157	148.41%	502	402	124.88%
5	278	245	113.47%	238	157	151.59%	516	402	128.36%
6	295	245	120.41%	243	157	154.78%	538	402	133.83%
7	302	245	123.27%	234	157	149.04%	536	402	133.33%
8	303	245	123.67%	236	157	150.32%	539	402	134.08%
9	301	245	122.86%	228	157	145.22%	529	402	131.59%
10	289	245	117.96%	257	157	163.69%	546	402	135.82%
11	314	245	128.16%	258	157	164.33%	572	402	142.29%
12	306	245	124.90%	316	157	201.27%	622	402	154.73%
13	306	245	124.90%	304	157	193.63%	610	402	151.74%
14	316	245	128.98%	325	157	207.01%	641	402	159.45%
15	311	245	126.94%	320	157	203.82%	631	402	156.97%
16	304	245	124.08%	288	157	183.44%	592	402	147.26%
17	304	245	124.08%	317	157	201.91%	621	402	154.48%
18	317	245	129.39%	329	157	209.55%	646	402	160.70%
19	311	245	126.94%	355	157	226.11%	666	402	165.67%
20	309	245	126.12%	339	157	215.92%	648	402	161.19%
21	307	245	125.31%	332	157	211.46%	639	402	158.96%
22	292	245	119.18%	318	157	202.55%	610	402	151.74%
23	278	245	113.47%	291	157	185.35%	569	402	141.54%
24	286	245	116.73%	302	157	192.36%	588	402	146.27%
25	286	245	116.73%	316	157	201.27%	602	402	149.75%
26	280	245	114.29%	310	157	197.45%	590	402	146.77%
27	282	245	115.10%	314	157	200.00%	596	402	148.26%
28	288	245	117.55%	287	157	182.80%	575	402	143.03%
29	289	245	117.96%	281	157	178.98%	570	402	141.79%
30	277	245	113.06%	274	157	174.52%	551	402	137.06%
31	295	245	120.41%	334	157	212.74%	629	402	156.47%
*	Dog Kennel Built Capacity includes Kennels AD, A, B, C, and D (E & F are excluded as medical treatment areas only)								
**	Cat Cages Built Capacity includes all Lobby Cages plus holding cages in rooms I, J & K								

November 2016 PRC Shelter Population Trends

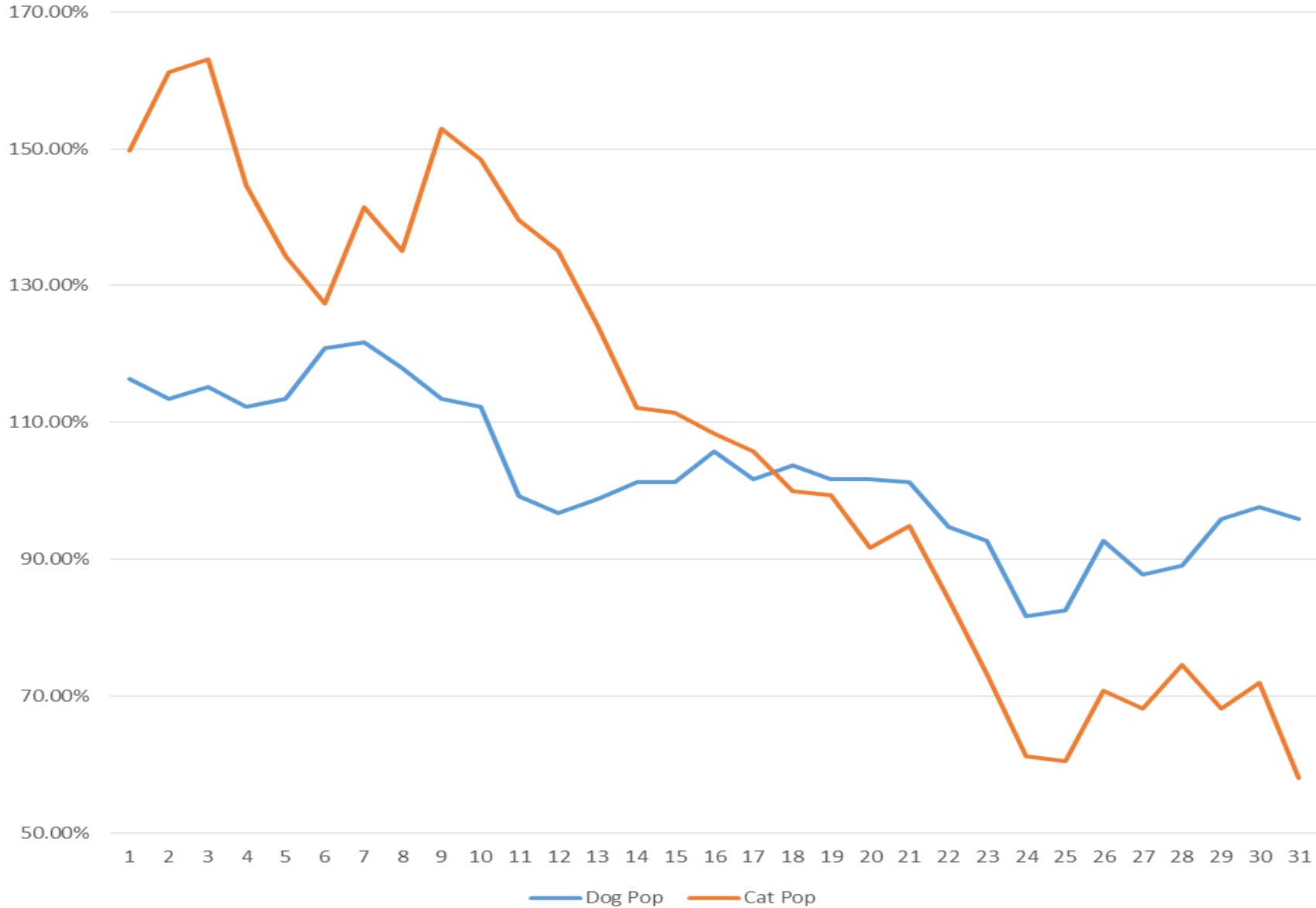


DATE	Dog Pop	Cat Pop	Shelter Pop
1	120.82%	170.06%	140.05%
2	119.59%	170.06%	139.30%
3	119.18%	173.89%	140.55%
4	114.69%	186.62%	142.79%
5	117.14%	173.89%	139.30%
6	107.76%	168.79%	131.59%
7	107.76%	176.43%	134.58%
8	108.16%	176.43%	134.83%
9	104.49%	173.25%	131.34%
10	106.53%	168.79%	130.85%
11	96.73%	140.76%	113.93%
12	107.76%	159.87%	128.11%
13	102.04%	137.58%	115.92%
14	111.84%	145.86%	125.12%
15	117.96%	148.41%	129.85%
16	117.14%	167.52%	136.82%
17	117.14%	159.87%	133.83%
18	120.82%	150.96%	132.59%
19	115.10%	159.87%	132.59%
20	112.65%	152.23%	128.11%
21	118.78%	157.96%	134.08%
22	127.76%	154.78%	138.31%
23	125.71%	150.32%	135.32%
24	108.98%	128.66%	116.67%
25	111.84%	128.66%	118.41%
26	122.45%	140.13%	129.35%
27	116.33%	132.48%	122.64%
28	119.18%	133.12%	124.63%
29	125.31%	143.95%	132.59%
30	122.04%	152.23%	133.83%

November 2016 PRC Shelter Population Trends

DATE	DOG POP	DOG KENNELS	POP/KENNELS	CAT POP	CAT CAGES	POP/KENNELS	TOTAL POP	TOTAL KENNEL	POP/KENNELS
1	296	245	120.82%	267	157	170.06%	563	402	140.05%
2	293	245	119.59%	267	157	170.06%	560	402	139.30%
3	292	245	119.18%	273	157	173.89%	565	402	140.55%
4	281	245	114.69%	293	157	186.62%	574	402	142.79%
5	287	245	117.14%	273	157	173.89%	560	402	139.30%
6	264	245	107.76%	265	157	168.79%	529	402	131.59%
7	264	245	107.76%	277	157	176.43%	541	402	134.58%
8	265	245	108.16%	277	157	176.43%	542	402	134.83%
9	256	245	104.49%	272	157	173.25%	528	402	131.34%
10	261	245	106.53%	265	157	168.79%	526	402	130.85%
11	237	245	96.73%	221	157	140.76%	458	402	113.93%
12	264	245	107.76%	251	157	159.87%	515	402	128.11%
13	250	245	102.04%	216	157	137.58%	466	402	115.92%
14	274	245	111.84%	229	157	145.86%	503	402	125.12%
15	289	245	117.96%	233	157	148.41%	522	402	129.85%
16	287	245	117.14%	263	157	167.52%	550	402	136.82%
17	287	245	117.14%	251	157	159.87%	538	402	133.83%
18	296	245	120.82%	237	157	150.96%	533	402	132.59%
19	282	245	115.10%	251	157	159.87%	533	402	132.59%
20	276	245	112.65%	239	157	152.23%	515	402	128.11%
21	291	245	118.78%	248	157	157.96%	539	402	134.08%
22	313	245	127.76%	243	157	154.78%	556	402	138.31%
23	308	245	125.71%	236	157	150.32%	544	402	135.32%
24	267	245	108.98%	202	157	128.66%	469	402	116.67%
25	274	245	111.84%	202	157	128.66%	476	402	118.41%
26	300	245	122.45%	220	157	140.13%	520	402	129.35%
27	285	245	116.33%	208	157	132.48%	493	402	122.64%
28	292	245	119.18%	209	157	133.12%	501	402	124.63%
29	307	245	125.31%	226	157	143.95%	533	402	132.59%
30	299	245	122.04%	239	157	152.23%	538	402	133.83%
*	Dog Kennel Built Capacity includes Kennels AD, A, B, C, and D (E & F are excluded as medical treatment areas only)								
**	Cat Cages Built Capacity includes all Lobby Cages plus holding cages in rooms I, J & K								

December 2016 PRC Shelter Population Trends



DATE	Dog Pop	Cat Pop	Shelter Pop
1	116.33%	149.68%	129.35%
2	113.47%	161.15%	132.09%
3	115.10%	163.06%	133.83%
4	112.24%	144.59%	124.88%
5	113.47%	134.39%	121.64%
6	120.82%	127.39%	123.38%
7	121.63%	141.40%	129.35%
8	117.96%	135.03%	124.63%
9	113.47%	152.87%	128.86%
10	112.24%	148.41%	126.37%
11	99.18%	139.49%	114.93%
12	96.73%	135.03%	111.69%
13	98.78%	124.20%	108.71%
14	101.22%	112.10%	105.47%
15	101.22%	111.46%	105.22%
16	105.71%	108.28%	106.72%
17	101.63%	105.73%	103.23%
18	103.67%	100.00%	102.24%
19	101.63%	99.36%	100.75%
20	101.63%	91.72%	97.76%
21	101.22%	94.90%	98.76%
22	94.69%	84.08%	90.55%
23	92.65%	73.25%	85.07%
24	81.63%	61.15%	73.63%
25	82.45%	60.51%	73.88%
26	92.65%	70.70%	84.08%
27	87.76%	68.15%	80.10%
28	88.98%	74.52%	83.33%
29	95.92%	68.15%	85.07%
30	97.55%	71.97%	87.56%
31	95.92%	57.96%	81.09%





2016 Annual PRC Shelter Population Trends

