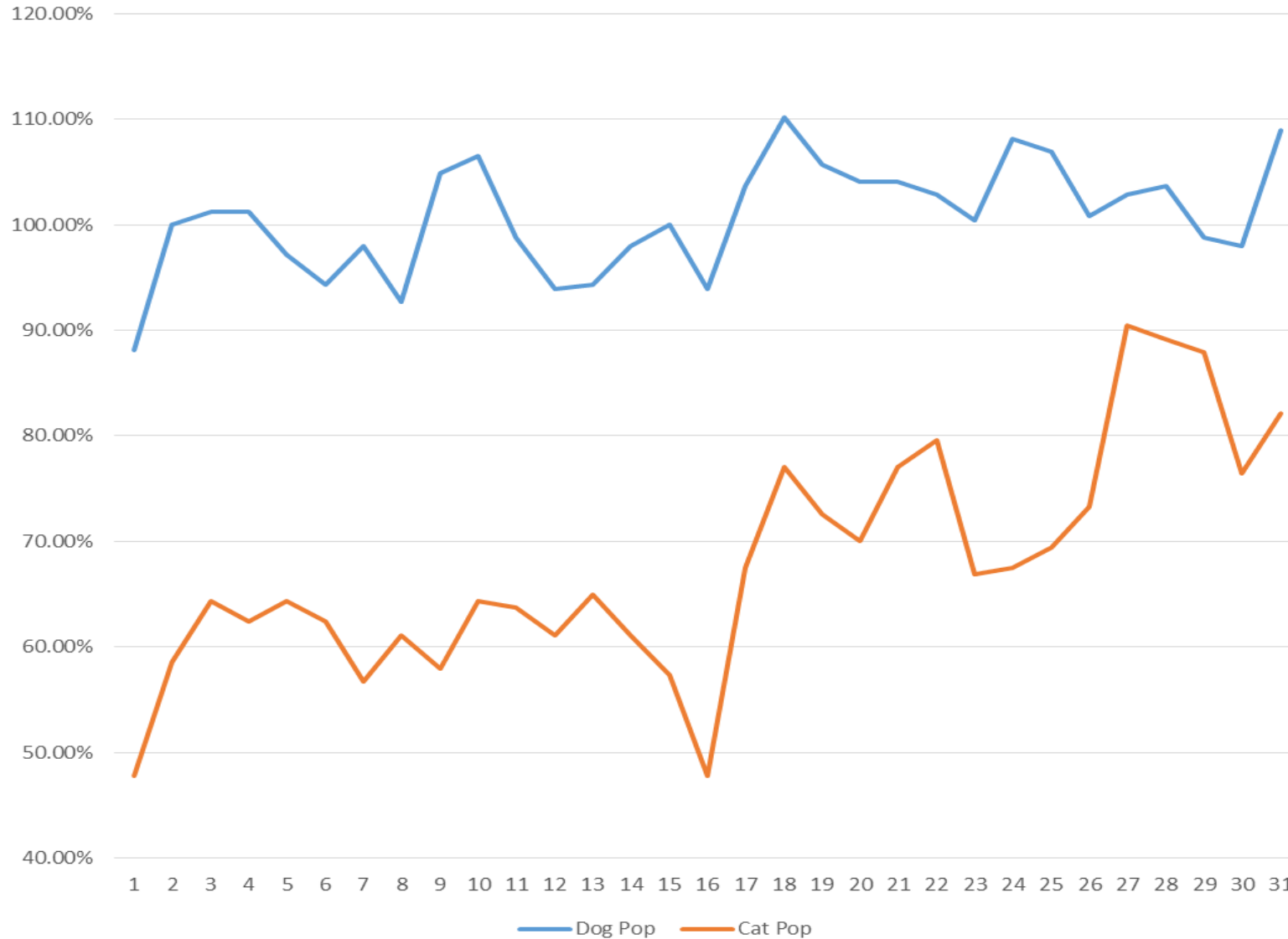


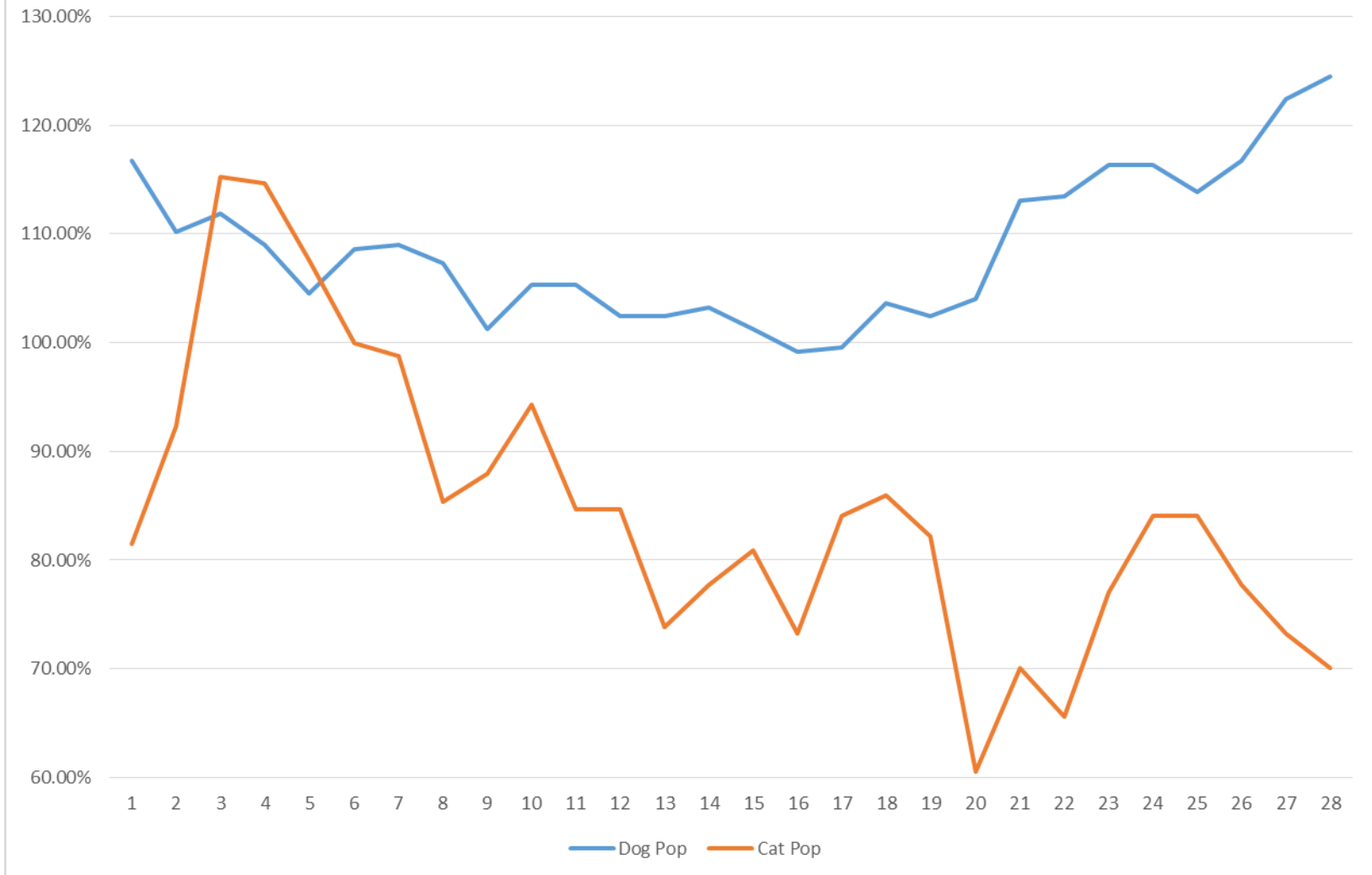
January 2017 PRC Shelter Population Trends



DATE	Dog Pop	Cat Pop	Shelter Pop
1	88.16%	47.77%	72.39%
2	100.00%	58.60%	83.83%
3	101.22%	64.33%	86.82%
4	101.22%	62.42%	86.07%
5	97.14%	64.33%	84.33%
6	94.29%	62.42%	81.84%
7	97.96%	56.69%	81.84%
8	92.65%	61.15%	80.35%
9	104.90%	57.96%	86.57%
10	106.53%	64.33%	90.05%
11	98.78%	63.69%	85.07%
12	93.88%	61.15%	81.09%
13	94.29%	64.97%	82.84%
14	97.96%	61.15%	83.58%
15	100.00%	57.32%	83.33%
16	94.29%	47.77%	75.87%
17	103.67%	67.52%	89.55%
18	110.20%	77.07%	97.26%
19	105.71%	72.61%	92.79%
20	104.08%	70.06%	90.80%
21	104.08%	77.07%	93.53%
22	102.86%	79.62%	93.78%
23	100.41%	66.88%	87.31%
24	108.16%	67.52%	92.29%
25	106.94%	69.43%	92.29%
26	100.82%	73.25%	90.05%
27	102.86%	90.45%	98.01%
28	103.67%	89.17%	98.01%
29	98.78%	87.90%	94.53%
30	97.96%	76.43%	89.55%
31	108.98%	82.17%	98.51%



February 2017 PRC Shelter Population Trends

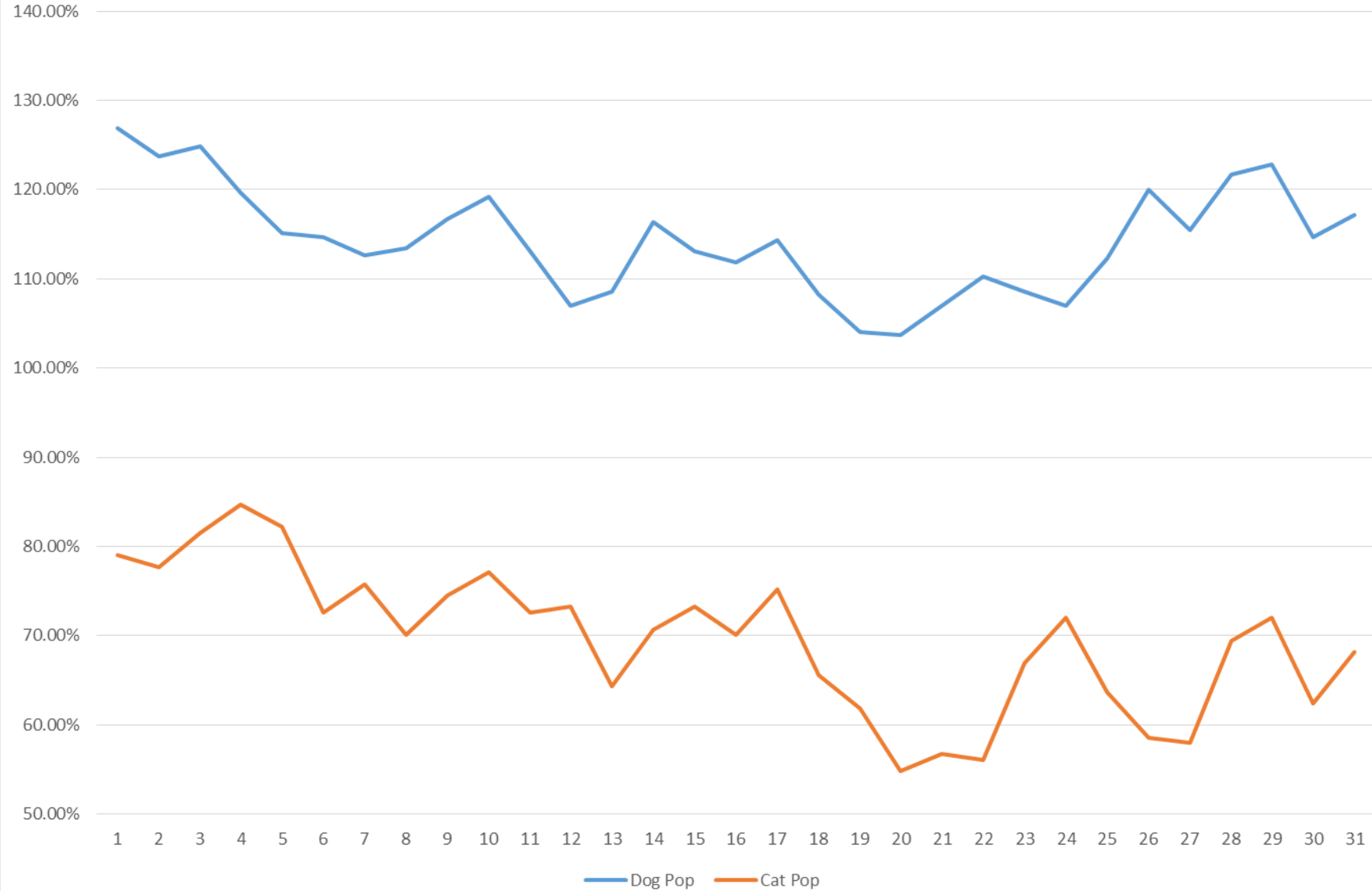


DATE	Dog Pop	Cat Pop	Shelter Pop
1	116.73%	81.53%	102.99%
2	110.20%	92.36%	103.23%
3	111.84%	115.29%	113.18%
4	108.98%	114.65%	111.19%
5	104.49%	107.64%	105.72%
6	108.57%	100.00%	105.22%
7	108.98%	98.73%	104.98%
8	107.35%	85.35%	98.76%
9	101.22%	87.90%	96.02%
10	105.31%	94.27%	101.00%
11	105.31%	84.71%	97.26%
12	102.45%	84.71%	95.52%
13	102.45%	73.89%	91.29%
14	103.27%	77.71%	93.28%
15	101.22%	80.89%	93.28%
16	99.18%	73.25%	89.05%
17	99.59%	84.08%	93.53%
18	103.67%	85.99%	96.77%
19	102.45%	82.17%	94.53%
20	104.08%	60.51%	87.06%
21	113.06%	70.06%	96.27%
22	113.47%	65.61%	94.78%
23	116.33%	77.07%	101.00%
24	116.33%	84.08%	103.73%
25	113.88%	84.08%	102.24%
26	116.73%	77.71%	101.49%
27	122.45%	73.25%	103.23%
28	124.49%	70.06%	103.23%

February 2017 PRC Shelter Population Trends

DATE	DOG POP	DOG KENNELS	POP/KENNELS	CAT POP	CAT CAGES	POP/KENNELS	TOTAL POP	TOTAL KENNEL	POP/KENNELS
1	286	245	116.73%	128	157	81.53%	414	402	102.99%
2	270	245	110.20%	145	157	92.36%	415	402	103.23%
3	274	245	111.84%	181	157	115.29%	455	402	113.18%
4	267	245	108.98%	180	157	114.65%	447	402	111.19%
5	256	245	104.49%	169	157	107.64%	425	402	105.72%
6	266	245	108.57%	157	157	100.00%	423	402	105.22%
7	267	245	108.98%	155	157	98.73%	422	402	104.98%
8	263	245	107.35%	134	157	85.35%	397	402	98.76%
9	248	245	101.22%	138	157	87.90%	386	402	96.02%
10	258	245	105.31%	148	157	94.27%	406	402	101.00%
11	258	245	105.31%	133	157	84.71%	391	402	97.26%
12	251	245	102.45%	133	157	84.71%	384	402	95.52%
13	251	245	102.45%	116	157	73.89%	367	402	91.29%
14	253	245	103.27%	122	157	77.71%	375	402	93.28%
15	248	245	101.22%	127	157	80.89%	375	402	93.28%
16	243	245	99.18%	115	157	73.25%	358	402	89.05%
17	244	245	99.59%	132	157	84.08%	376	402	93.53%
18	254	245	103.67%	135	157	85.99%	389	402	96.77%
19	251	245	102.45%	129	157	82.17%	380	402	94.53%
20	255	245	104.08%	95	157	60.51%	350	402	87.06%
21	277	245	113.06%	110	157	70.06%	387	402	96.27%
22	278	245	113.47%	103	157	65.61%	381	402	94.78%
23	285	245	116.33%	121	157	77.07%	406	402	101.00%
24	285	245	116.33%	132	157	84.08%	417	402	103.73%
25	279	245	113.88%	132	157	84.08%	411	402	102.24%
26	286	245	116.73%	122	157	77.71%	408	402	101.49%
27	300	245	122.45%	115	157	73.25%	415	402	103.23%
28	305	245	124.49%	110	157	70.06%	415	402	103.23%
*	Dog Kennel Built Capacity includes Kennels AD, A, B, C, and D (E & F are excluded as medical treatment areas only)								
**	Cat Cages Built Capacity includes all Lobby Cages plus holding cages in rooms I, J & K								
DATA: Source is from Chameleon with Output of "Daily Animal Population" Report (Run 5/15/2018)									

March 2017 PRC Shelter Population Trend



DATE	Dog Pop	Cat Pop	Shelter Pop
1	126.94%	78.98%	108.21%
2	123.67%	77.71%	105.72%
3	124.90%	81.53%	107.96%
4	119.59%	84.71%	105.97%
5	115.10%	82.17%	102.24%
6	114.69%	72.61%	98.26%
7	112.65%	75.80%	98.26%
8	113.47%	70.06%	96.52%
9	116.73%	74.52%	100.25%
10	119.18%	77.07%	102.74%
11	113.06%	72.61%	97.26%
12	106.94%	73.25%	93.78%
13	108.57%	64.33%	91.29%
14	116.33%	70.70%	98.51%
15	113.06%	73.25%	97.51%
16	111.84%	70.06%	95.52%
17	114.29%	75.16%	99.00%
18	108.16%	65.61%	91.54%
19	104.08%	61.78%	87.56%
20	103.67%	54.78%	84.58%
21	106.94%	56.69%	87.31%
22	110.20%	56.05%	89.05%
23	108.57%	66.88%	92.29%
24	106.94%	71.97%	93.28%
25	112.24%	63.69%	93.28%
26	120.00%	58.60%	96.02%
27	115.51%	57.96%	93.03%
28	121.63%	69.43%	101.24%
29	122.86%	71.97%	102.99%
30	114.69%	62.42%	94.28%
31	117.14%	68.15%	98.01%

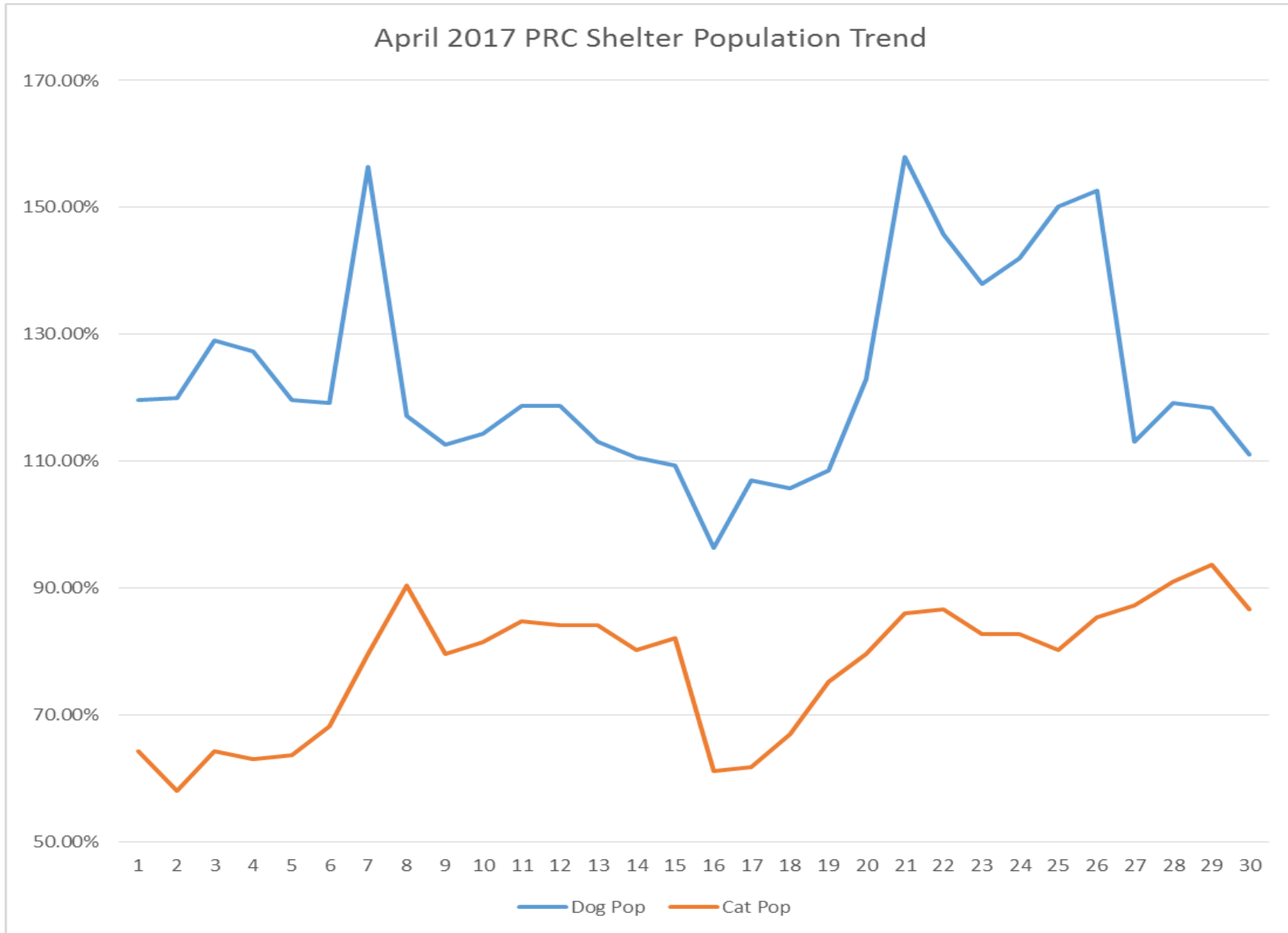
March 2017 PRC Shelter Population Trends

DATE	DOG POP	DOG KENNELS	POP/KENNELS	CAT POP	CAT CAGES	POP/KENNELS	TOTAL POP	TOTAL KENNEL	POP/KENNELS
1	311	245	126.94%	124	157	78.98%	435	402	108.21%
2	303	245	123.67%	122	157	77.71%	425	402	105.72%
3	306	245	124.90%	128	157	81.53%	434	402	107.96%
4	293	245	119.59%	133	157	84.71%	426	402	105.97%
5	282	245	115.10%	129	157	82.17%	411	402	102.24%
6	281	245	114.69%	114	157	72.61%	395	402	98.26%
7	276	245	112.65%	119	157	75.80%	395	402	98.26%
8	278	245	113.47%	110	157	70.06%	388	402	96.52%
9	286	245	116.73%	117	157	74.52%	403	402	100.25%
10	292	245	119.18%	121	157	77.07%	413	402	102.74%
11	277	245	113.06%	114	157	72.61%	391	402	97.26%
12	262	245	106.94%	115	157	73.25%	377	402	93.78%
13	266	245	108.57%	101	157	64.33%	367	402	91.29%
14	285	245	116.33%	111	157	70.70%	396	402	98.51%
15	277	245	113.06%	115	157	73.25%	392	402	97.51%
16	274	245	111.84%	110	157	70.06%	384	402	95.52%
17	280	245	114.29%	118	157	75.16%	398	402	99.00%
18	265	245	108.16%	103	157	65.61%	368	402	91.54%
19	255	245	104.08%	97	157	61.78%	352	402	87.56%
20	254	245	103.67%	86	157	54.78%	340	402	84.58%
21	262	245	106.94%	89	157	56.69%	351	402	87.31%
22	270	245	110.20%	88	157	56.05%	358	402	89.05%
23	266	245	108.57%	105	157	66.88%	371	402	92.29%
24	262	245	106.94%	113	157	71.97%	375	402	93.28%
25	275	245	112.24%	100	157	63.69%	375	402	93.28%
26	294	245	120.00%	92	157	58.60%	386	402	96.02%
27	283	245	115.51%	91	157	57.96%	374	402	93.03%
28	298	245	121.63%	109	157	69.43%	407	402	101.24%
29	301	245	122.86%	113	157	71.97%	414	402	102.99%
30	281	245	114.69%	98	157	62.42%	379	402	94.28%
31	287	245	117.14%	107	157	68.15%	394	402	98.01%

\* Dog Kennel Built Capacity includes Kennels AD, A, B, C, and D (E & F are excluded as medical treatment areas only)

\*\* Cat Cages Built Capacity includes all Lobby Cages plus holding cages in rooms I, J & K

DATA: Source is from Chameleon with Output of "Daily Animal Population" Report (Run 5/15/2018)



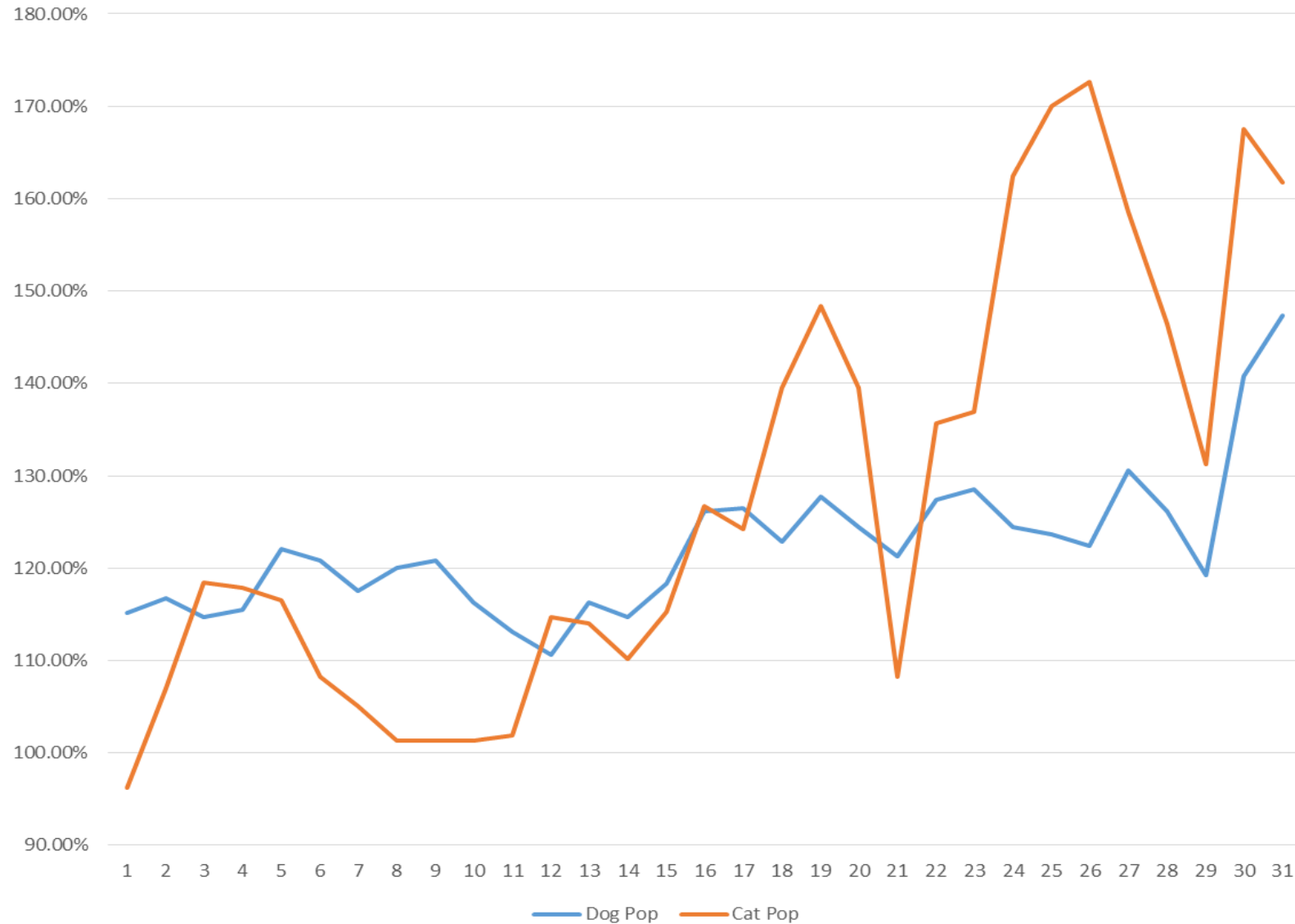
DATE	Dog Pop	Cat Pop	Shelter Pop
1	119.59%	64.33%	98.01%
2	120.00%	57.96%	95.77%
3	128.98%	64.33%	103.73%
4	127.35%	63.06%	102.24%
5	119.59%	63.69%	97.76%
6	119.18%	68.15%	99.25%
7	156.33%	79.62%	126.37%
8	117.14%	90.45%	106.72%
9	112.65%	79.62%	99.75%
10	114.29%	81.53%	101.49%
11	118.78%	84.71%	105.47%
12	118.78%	84.08%	105.22%
13	113.06%	84.08%	101.74%
14	110.61%	80.25%	98.76%
15	109.39%	82.17%	98.76%
16	96.33%	61.15%	82.59%
17	106.94%	61.78%	89.30%
18	105.71%	66.88%	90.55%
19	108.57%	75.16%	95.52%
20	122.86%	79.62%	105.97%
21	157.96%	85.99%	129.85%
22	145.71%	86.62%	122.64%
23	137.96%	82.80%	116.42%
24	142.04%	82.80%	118.91%
25	150.20%	80.25%	122.89%
26	152.65%	85.35%	126.37%
27	113.06%	87.26%	102.99%
28	119.18%	91.08%	108.21%
29	118.37%	93.63%	108.71%
30	111.02%	86.62%	101.49%

April 2017 PRC Shelter Population Trends

DATE	DOG POP	DOG KENNELS	POP/KENNELS	CAT POP	CAT CAGES	POP/KENNELS	TOTAL POP	TOTAL KENNEL	POP/KENNELS
1	293	245	119.59%	101	157	64.33%	394	402	98.01%
2	294	245	120.00%	91	157	57.96%	385	402	95.77%
3	316	245	128.98%	101	157	64.33%	417	402	103.73%
4	312	245	127.35%	99	157	63.06%	411	402	102.24%
5	293	245	119.59%	100	157	63.69%	393	402	97.76%
6	292	245	119.18%	107	157	68.15%	399	402	99.25%
7	383	245	156.33%	125	157	79.62%	508	402	126.37%
8	287	245	117.14%	142	157	90.45%	429	402	106.72%
9	276	245	112.65%	125	157	79.62%	401	402	99.75%
10	280	245	114.29%	128	157	81.53%	408	402	101.49%
11	291	245	118.78%	133	157	84.71%	424	402	105.47%
12	291	245	118.78%	132	157	84.08%	423	402	105.22%
13	277	245	113.06%	132	157	84.08%	409	402	101.74%
14	271	245	110.61%	126	157	80.25%	397	402	98.76%
15	268	245	109.39%	129	157	82.17%	397	402	98.76%
16	236	245	96.33%	96	157	61.15%	332	402	82.59%
17	262	245	106.94%	97	157	61.78%	359	402	89.30%
18	259	245	105.71%	105	157	66.88%	364	402	90.55%
19	266	245	108.57%	118	157	75.16%	384	402	95.52%
20	301	245	122.86%	125	157	79.62%	426	402	105.97%
21	387	245	157.96%	135	157	85.99%	522	402	129.85%
22	357	245	145.71%	136	157	86.62%	493	402	122.64%
23	338	245	137.96%	130	157	82.80%	468	402	116.42%
24	348	245	142.04%	130	157	82.80%	478	402	118.91%
25	368	245	150.20%	126	157	80.25%	494	402	122.89%
26	374	245	152.65%	134	157	85.35%	508	402	126.37%
27	277	245	113.06%	137	157	87.26%	414	402	102.99%
28	292	245	119.18%	143	157	91.08%	435	402	108.21%
29	290	245	118.37%	147	157	93.63%	437	402	108.71%
30	272	245	111.02%	136	157	86.62%	408	402	101.49%
* Dog Kennel Built Capacity includes Kennels AD, A, B, C, and D (E & F are excluded as medical treatment areas only)									
** Cat Cages Built Capacity includes all Lobby Cages plus holding cages in rooms I, J & K									
DATA: Source is from Chameleon with Output of "Daily Animal Population" Report (Run 5/15/2018)									



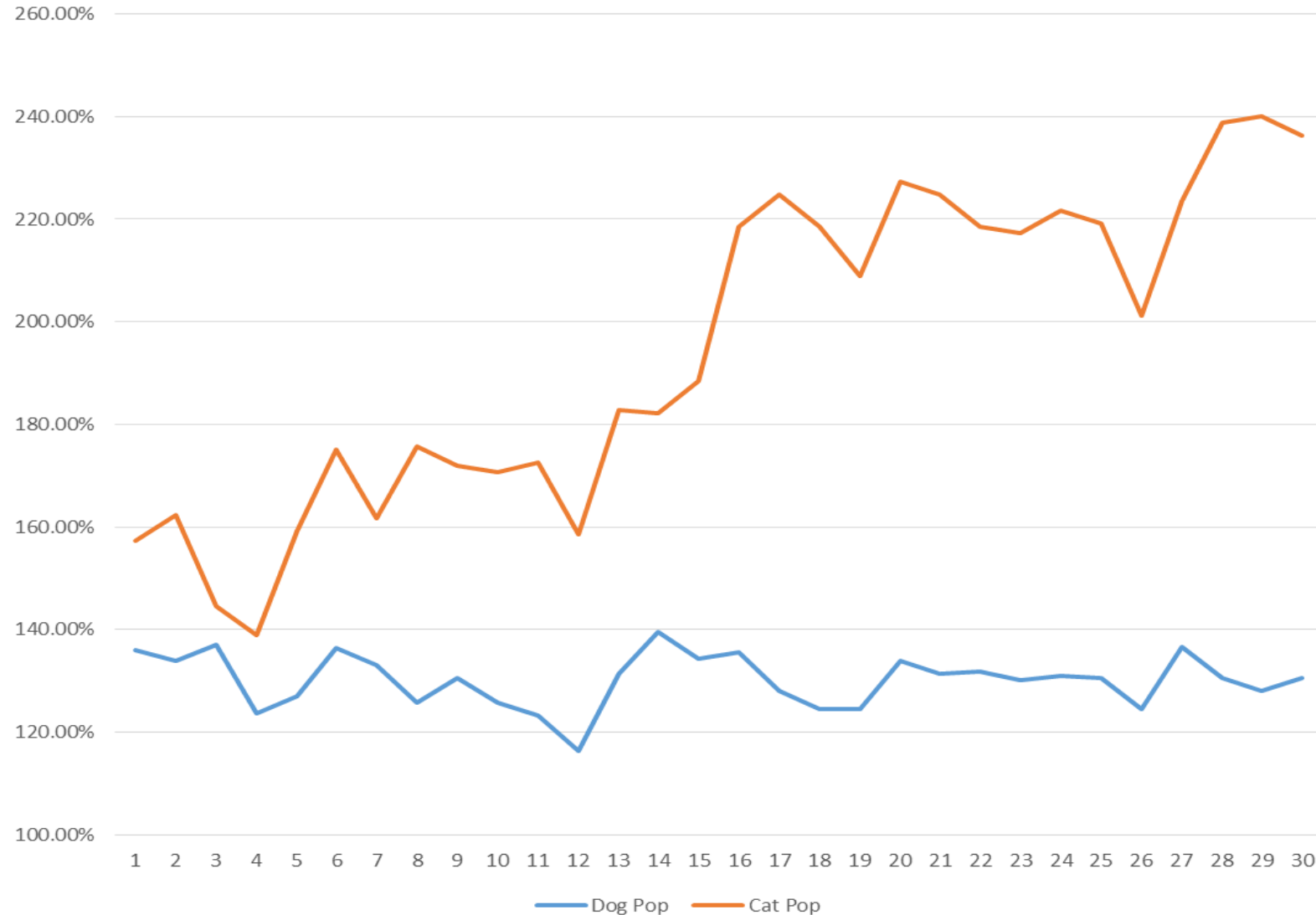
May 2017 PRC Shelter Population Trend



DATE	Dog Pop	Cat Pop	Shelter Pop
1	115.10%	96.18%	107.71%
2	116.73%	107.01%	112.94%
3	114.69%	118.47%	116.17%
4	115.51%	117.83%	116.42%
5	122.04%	116.56%	119.90%
6	120.82%	108.28%	115.92%
7	117.55%	105.10%	112.69%
8	120.00%	101.27%	112.69%
9	120.82%	101.27%	113.18%
10	116.33%	101.27%	110.45%
11	113.06%	101.91%	108.71%
12	110.61%	114.65%	112.19%
13	116.33%	114.01%	115.42%
14	114.69%	110.19%	112.94%
15	118.37%	115.29%	117.16%
16	126.12%	126.75%	126.37%
17	126.53%	124.20%	125.62%
18	122.86%	139.49%	129.35%
19	127.76%	148.41%	135.82%
20	124.49%	139.49%	130.35%
21	121.22%	108.28%	116.17%
22	127.35%	135.67%	130.60%
23	128.57%	136.94%	131.84%
24	124.49%	162.42%	139.30%
25	123.67%	170.06%	141.79%
26	122.45%	172.61%	142.04%
27	130.61%	158.60%	141.54%
28	126.12%	146.50%	134.08%
29	119.18%	131.21%	123.88%
30	140.82%	167.52%	151.24%
31	147.35%	161.78%	152.99%



June 2017 PRC Shelter Population Trends

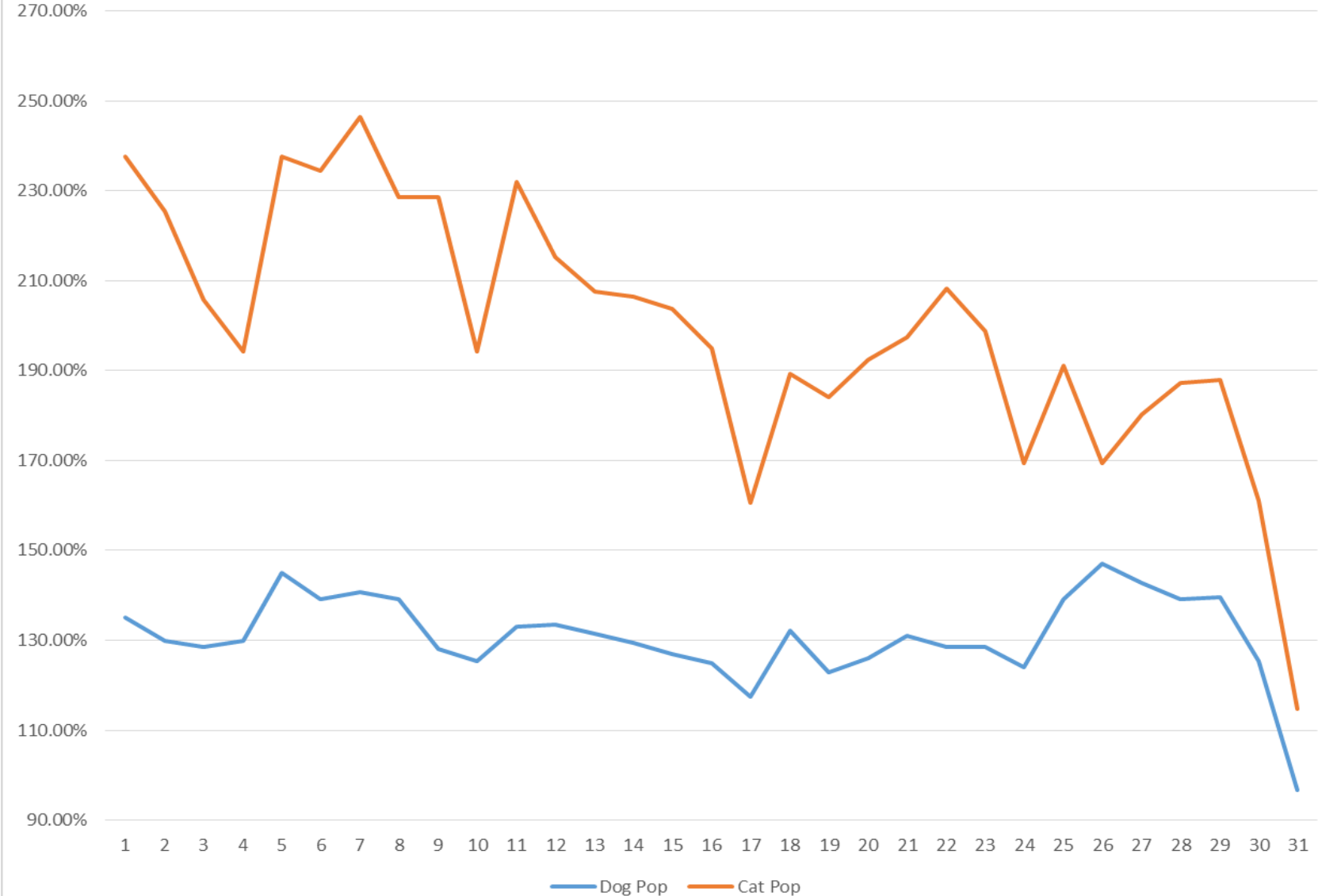


DATE	Dog Pop	Cat Pop	Shelter Pop
1	135.92%	157.32%	144.28%
2	133.88%	162.42%	145.02%
3	137.14%	144.59%	140.05%
4	123.67%	138.85%	129.60%
5	126.94%	159.24%	139.55%
6	136.33%	175.16%	151.49%
7	133.06%	161.78%	144.28%
8	125.71%	175.80%	145.27%
9	130.61%	171.97%	146.77%
10	125.71%	170.70%	143.28%
11	123.27%	172.61%	142.54%
12	116.33%	158.60%	132.84%
13	131.43%	182.80%	151.49%
14	139.59%	182.17%	156.22%
15	134.29%	188.54%	155.47%
16	135.51%	218.47%	167.91%
17	128.16%	224.84%	165.92%
18	124.49%	218.47%	161.19%
19	124.49%	208.92%	157.46%
20	133.88%	227.39%	170.40%
21	131.43%	224.84%	167.91%
22	131.84%	218.47%	165.67%
23	130.20%	217.20%	164.18%
24	131.02%	221.66%	166.42%
25	130.61%	219.11%	165.17%
26	124.49%	201.27%	154.48%
27	136.73%	223.57%	170.65%
28	130.61%	238.85%	172.89%
29	128.16%	240.13%	171.89%
30	130.61%	236.31%	171.89%

June 2017 PRC Shelter Population Trends

DATE	DOG POP	DOG KEN	POP/KENNELS	CAT POP	CAT CAGE	POP/KENNELS	TOTAL PO	TOTAL KE	POP/KENNELS
1	333	245	135.92%	247	157	157.32%	580	402	144.28%
2	328	245	133.88%	255	157	162.42%	583	402	145.02%
3	336	245	137.14%	227	157	144.59%	563	402	140.05%
4	303	245	123.67%	218	157	138.85%	521	402	129.60%
5	311	245	126.94%	250	157	159.24%	561	402	139.55%
6	334	245	136.33%	275	157	175.16%	609	402	151.49%
7	326	245	133.06%	254	157	161.78%	580	402	144.28%
8	308	245	125.71%	276	157	175.80%	584	402	145.27%
9	320	245	130.61%	270	157	171.97%	590	402	146.77%
10	308	245	125.71%	268	157	170.70%	576	402	143.28%
11	302	245	123.27%	271	157	172.61%	573	402	142.54%
12	285	245	116.33%	249	157	158.60%	534	402	132.84%
13	322	245	131.43%	287	157	182.80%	609	402	151.49%
14	342	245	139.59%	286	157	182.17%	628	402	156.22%
15	329	245	134.29%	296	157	188.54%	625	402	155.47%
16	332	245	135.51%	343	157	218.47%	675	402	167.91%
17	314	245	128.16%	353	157	224.84%	667	402	165.92%
18	305	245	124.49%	343	157	218.47%	648	402	161.19%
19	305	245	124.49%	328	157	208.92%	633	402	157.46%
20	328	245	133.88%	357	157	227.39%	685	402	170.40%
21	322	245	131.43%	353	157	224.84%	675	402	167.91%
22	323	245	131.84%	343	157	218.47%	666	402	165.67%
23	319	245	130.20%	341	157	217.20%	660	402	164.18%
24	321	245	131.02%	348	157	221.66%	669	402	166.42%
25	320	245	130.61%	344	157	219.11%	664	402	165.17%
26	305	245	124.49%	316	157	201.27%	621	402	154.48%
27	335	245	136.73%	351	157	223.57%	686	402	170.65%
28	320	245	130.61%	375	157	238.85%	695	402	172.89%
29	314	245	128.16%	377	157	240.13%	691	402	171.89%
30	320	245	130.61%	371	157	236.31%	691	402	171.89%
*	Dog Kennel Built Capacity includes Kennels AD, A, B, C, and D (E & F are excluded as medical treatment areas only)								
**	Cat Cages Built Capacity includes all Lobby Cages plus holding cages in rooms I, J & K								
DATA: Source is from Chameleon with Output of "Daily Animal Population" Report (Run 5/15/2018)									

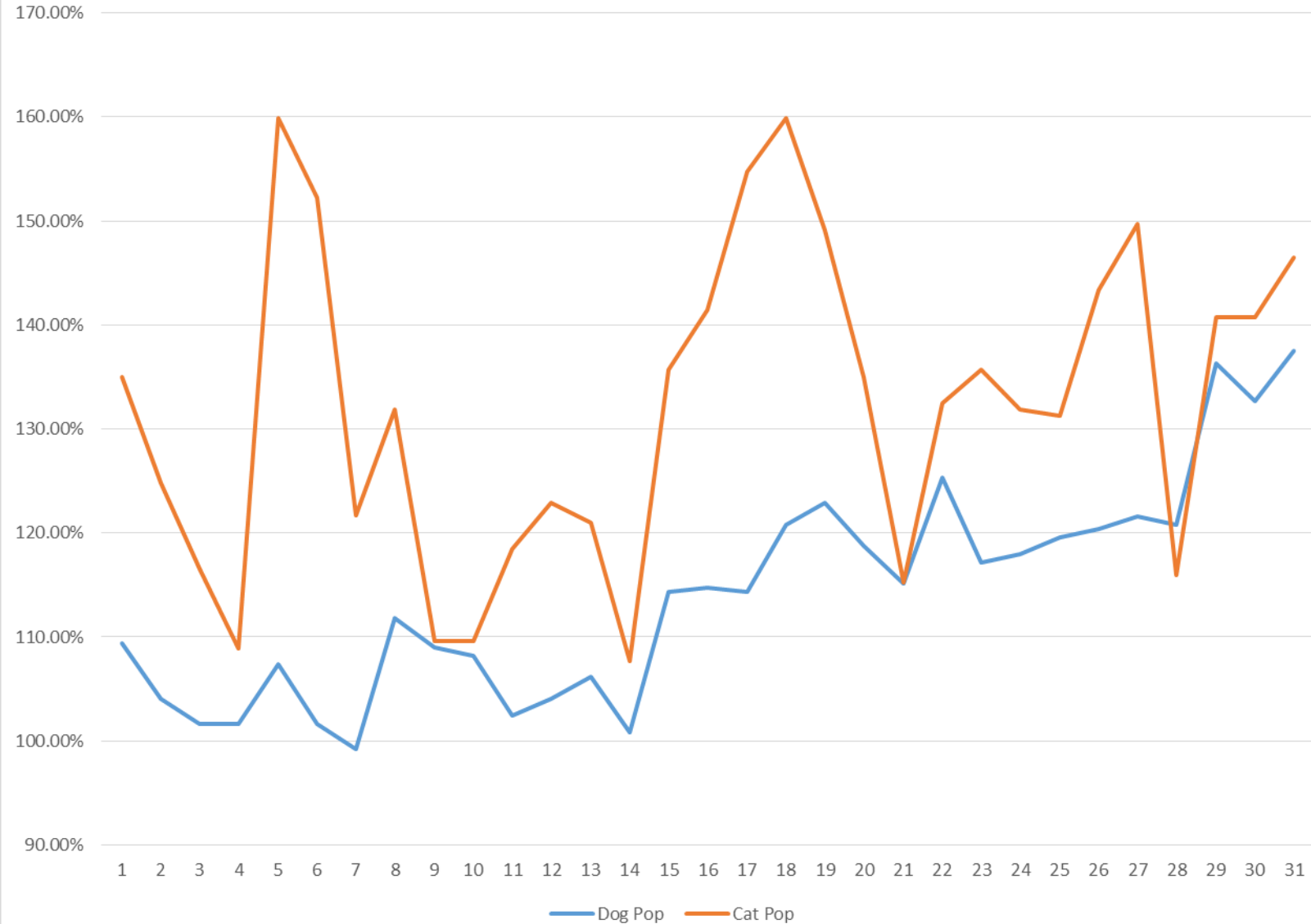
July 2017 PRC Shelter Population Trends



DATE	Dog Pop	Cat Pop	Shelter Pop
1	135.10%	237.58%	175.12%
2	129.80%	225.48%	167.16%
3	128.57%	205.73%	158.71%
4	129.80%	194.27%	154.98%
5	144.90%	237.58%	181.09%
6	139.18%	234.39%	176.37%
7	140.82%	246.50%	182.09%
8	139.18%	228.66%	174.13%
9	128.16%	228.66%	167.41%
10	125.31%	194.27%	152.24%
11	133.06%	231.85%	171.64%
12	133.47%	215.29%	165.42%
13	131.43%	207.64%	161.19%
14	129.39%	206.37%	159.45%
15	126.94%	203.82%	156.97%
16	124.90%	194.90%	152.24%
17	117.55%	160.51%	134.33%
18	132.24%	189.17%	154.48%
19	122.86%	184.08%	146.77%
20	126.12%	192.36%	151.99%
21	131.02%	197.45%	156.97%
22	128.57%	208.28%	159.70%
23	128.57%	198.73%	155.97%
24	124.08%	169.43%	141.79%
25	139.18%	191.08%	159.45%
26	146.94%	169.43%	155.72%
27	142.86%	180.25%	157.46%
28	139.18%	187.26%	157.96%
29	139.59%	187.90%	158.46%
30	125.31%	161.15%	139.30%
31	96.73%	114.65%	103.73%



August 2017 PRC Shelter Population Trends



DATE	Dog Pop	Cat Pop	Shelter Pop
1	109.39%	135.03%	119.40%
2	104.08%	124.84%	112.19%
3	101.63%	116.56%	107.46%
4	101.63%	108.92%	104.48%
5	107.35%	159.87%	127.86%
6	101.63%	152.23%	121.39%
7	99.18%	121.66%	107.96%
8	111.84%	131.85%	119.65%
9	108.98%	109.55%	109.20%
10	108.16%	109.55%	108.71%
11	102.45%	118.47%	108.71%
12	104.08%	122.93%	111.44%
13	106.12%	121.02%	111.94%
14	100.82%	107.64%	103.48%
15	114.29%	135.67%	122.64%
16	114.69%	141.40%	125.12%
17	114.29%	154.78%	130.10%
18	120.82%	159.87%	136.07%
19	122.86%	149.04%	133.08%
20	118.78%	135.03%	125.12%
21	115.10%	115.29%	115.17%
22	125.31%	132.48%	128.11%
23	117.14%	135.67%	124.38%
24	117.96%	131.85%	123.38%
25	119.59%	131.21%	124.13%
26	120.41%	143.31%	129.35%
27	121.63%	149.68%	132.59%
28	120.82%	115.92%	118.91%
29	136.33%	140.76%	138.06%
30	132.65%	140.76%	135.82%
31	137.55%	146.50%	141.04%

August 2017 PRC Shelter Population Trends

DATE	DOG POP	DOG KENNELS	POP/KENNELS	CAT POP	CAT CAGES	POP/KENNELS	TOTAL POP	TOTAL KENNEL	POP/KENNELS
1	268	245	109.39%	212	157	135.03%	480	402	119.40%
2	255	245	104.08%	196	157	124.84%	451	402	112.19%
3	249	245	101.63%	183	157	116.56%	432	402	107.46%
4	249	245	101.63%	171	157	108.92%	420	402	104.48%
5	263	245	107.35%	251	157	159.87%	514	402	127.86%
6	249	245	101.63%	239	157	152.23%	488	402	121.39%
7	243	245	99.18%	191	157	121.66%	434	402	107.96%
8	274	245	111.84%	207	157	131.85%	481	402	119.65%
9	267	245	108.98%	172	157	109.55%	439	402	109.20%
10	265	245	108.16%	172	157	109.55%	437	402	108.71%
11	251	245	102.45%	186	157	118.47%	437	402	108.71%
12	255	245	104.08%	193	157	122.93%	448	402	111.44%
13	260	245	106.12%	190	157	121.02%	450	402	111.94%
14	247	245	100.82%	169	157	107.64%	416	402	103.48%
15	280	245	114.29%	213	157	135.67%	493	402	122.64%
16	281	245	114.69%	222	157	141.40%	503	402	125.12%
17	280	245	114.29%	243	157	154.78%	523	402	130.10%
18	296	245	120.82%	251	157	159.87%	547	402	136.07%
19	301	245	122.86%	234	157	149.04%	535	402	133.08%
20	291	245	118.78%	212	157	135.03%	503	402	125.12%
21	282	245	115.10%	181	157	115.29%	463	402	115.17%
22	307	245	125.31%	208	157	132.48%	515	402	128.11%
23	287	245	117.14%	213	157	135.67%	500	402	124.38%
24	289	245	117.96%	207	157	131.85%	496	402	123.38%
25	293	245	119.59%	206	157	131.21%	499	402	124.13%
26	295	245	120.41%	225	157	143.31%	520	402	129.35%
27	298	245	121.63%	235	157	149.68%	533	402	132.59%
28	296	245	120.82%	182	157	115.92%	478	402	118.91%
29	334	245	136.33%	221	157	140.76%	555	402	138.06%
30	325	245	132.65%	221	157	140.76%	546	402	135.82%
31	337	245	137.55%	230	157	146.50%	567	402	141.04%
*	Dog Kennel Built Capacity includes Kennels AD, A, B, C, and D (E & F are excluded as medical treatment areas only)								
**	Cat Cages Built Capacity includes all Lobby Cages plus holding cages in rooms I, J & K								
DATA: Source is from Chameleon with Output of "Daily Animal Population" Report (Run 5/15/2018)									



September 2017 PRC Shelter Population Trends

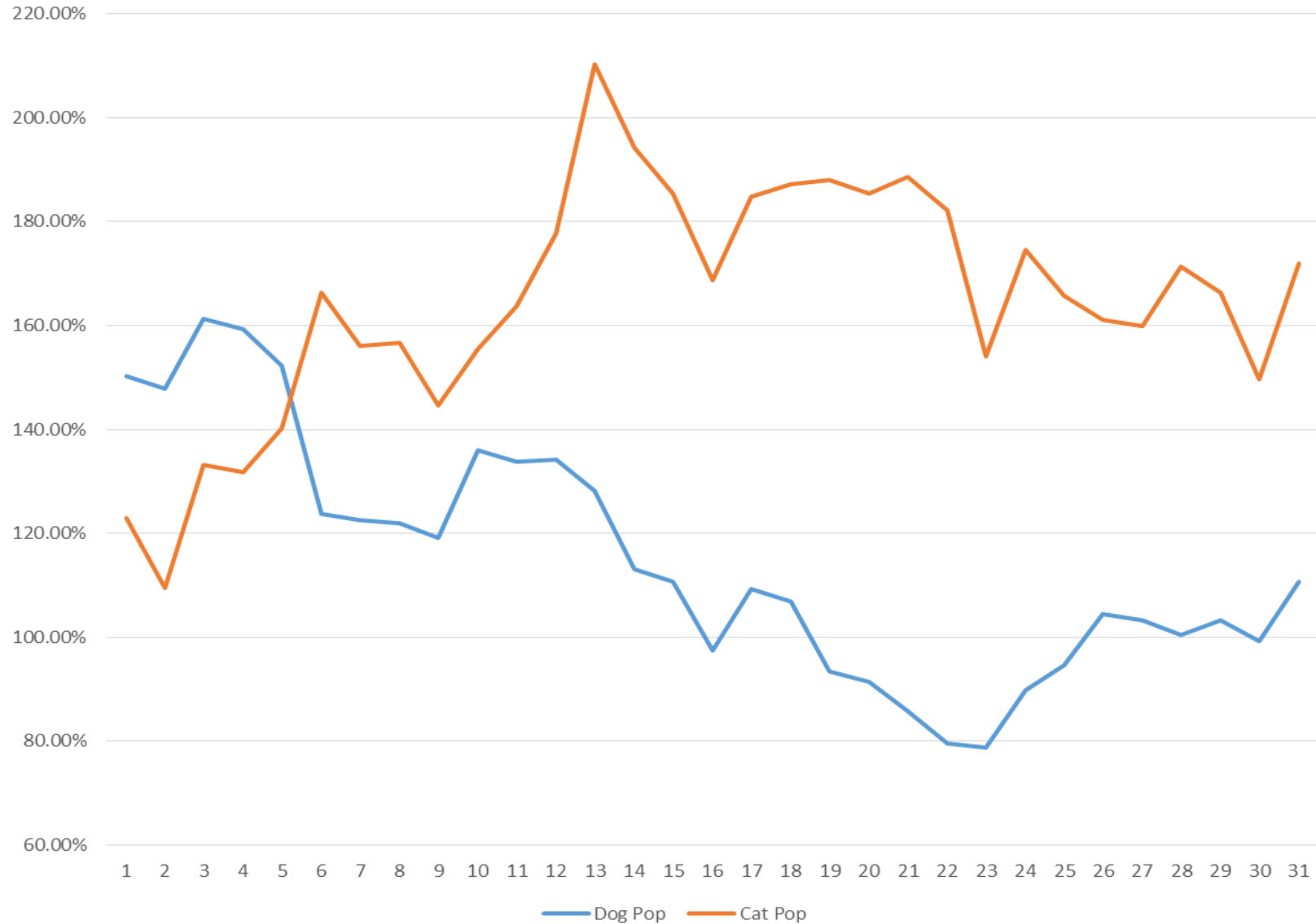


DATE	Dog Pop	Cat Pop	Shelter Pop
1	135.92%	148.41%	140.80%
2	135.51%	152.23%	142.04%
3	126.53%	145.22%	133.83%
4	117.14%	129.30%	121.89%
5	132.24%	143.95%	136.82%
6	143.67%	114.65%	132.34%
7	134.69%	128.03%	132.09%
8	116.33%	100.64%	110.20%
9	113.88%	80.89%	101.00%
10	113.88%	80.25%	100.75%
11	113.47%	80.89%	100.75%
12	124.90%	85.35%	109.45%
13	126.94%	96.18%	114.93%
14	126.94%	94.27%	114.18%
15	129.80%	104.46%	119.90%
16	137.96%	104.46%	124.88%
17	142.04%	96.82%	124.38%
18	140.82%	66.88%	111.94%
19	139.59%	83.44%	117.66%
20	140.82%	91.72%	121.64%
21	137.55%	98.09%	122.14%
22	134.69%	108.92%	124.63%
23	139.18%	107.01%	126.62%
24	137.14%	94.90%	120.65%
25	137.96%	63.06%	108.71%
26	149.39%	96.18%	128.61%
27	146.94%	103.18%	129.85%
28	149.80%	114.65%	136.07%
29	149.80%	121.02%	138.56%
30	151.43%	136.31%	145.52%

September 2017 PRC Shelter Population Trends

DATE	DOG POP	DOG KENNELS	POP/KENNELS	CAT POP	CAT CAGES	POP/KENNELS	TOTAL POP	TOTAL KENNEL	POP/KENNELS
1	333	245	135.92%	233	157	148.41%	566	402	140.80%
2	332	245	135.51%	239	157	152.23%	571	402	142.04%
3	310	245	126.53%	228	157	145.22%	538	402	133.83%
4	287	245	117.14%	203	157	129.30%	490	402	121.89%
5	324	245	132.24%	226	157	143.95%	550	402	136.82%
6	352	245	143.67%	180	157	114.65%	532	402	132.34%
7	330	245	134.69%	201	157	128.03%	531	402	132.09%
8	285	245	116.33%	158	157	100.64%	443	402	110.20%
9	279	245	113.88%	127	157	80.89%	406	402	101.00%
10	279	245	113.88%	126	157	80.25%	405	402	100.75%
11	278	245	113.47%	127	157	80.89%	405	402	100.75%
12	306	245	124.90%	134	157	85.35%	440	402	109.45%
13	311	245	126.94%	151	157	96.18%	462	402	114.93%
14	311	245	126.94%	148	157	94.27%	459	402	114.18%
15	318	245	129.80%	164	157	104.46%	482	402	119.90%
16	338	245	137.96%	164	157	104.46%	502	402	124.88%
17	348	245	142.04%	152	157	96.82%	500	402	124.38%
18	345	245	140.82%	105	157	66.88%	450	402	111.94%
19	342	245	139.59%	131	157	83.44%	473	402	117.66%
20	345	245	140.82%	144	157	91.72%	489	402	121.64%
21	337	245	137.55%	154	157	98.09%	491	402	122.14%
22	330	245	134.69%	171	157	108.92%	501	402	124.63%
23	341	245	139.18%	168	157	107.01%	509	402	126.62%
24	336	245	137.14%	149	157	94.90%	485	402	120.65%
25	338	245	137.96%	99	157	63.06%	437	402	108.71%
26	366	245	149.39%	151	157	96.18%	517	402	128.61%
27	360	245	146.94%	162	157	103.18%	522	402	129.85%
28	367	245	149.80%	180	157	114.65%	547	402	136.07%
29	367	245	149.80%	190	157	121.02%	557	402	138.56%
30	371	245	151.43%	214	157	136.31%	585	402	145.52%
* Dog Kennel Built Capacity includes Kennels AD, A, B, C, and D (E & F are excluded as medical treatment areas only)									
** Cat Cages Built Capacity includes all Lobby Cages plus holding cages in rooms I, J & K									
DATA: Source is from Chameleon with Output of "Daily Animal Population" Report (Run 5/15/2018)									

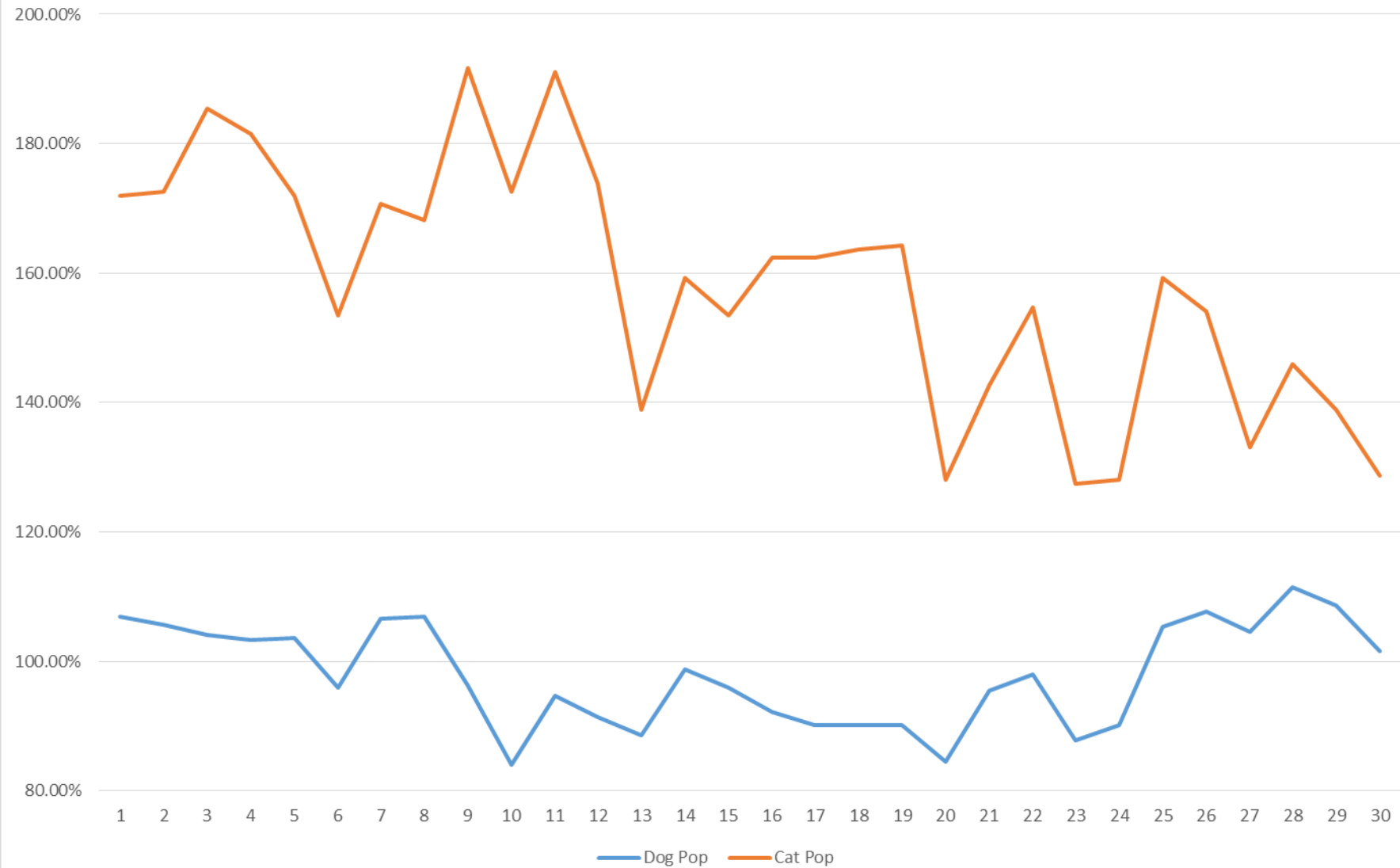
October 2017 PRC Shelter Population Trends



DATE	Dog Pop	Cat Pop	Shelter Pop
1	150.20%	122.93%	139.55%
2	147.76%	109.55%	132.84%
3	161.22%	133.12%	150.25%
4	159.18%	131.85%	148.51%
5	152.24%	140.13%	147.51%
6	123.67%	166.24%	140.30%
7	122.45%	156.05%	135.57%
8	122.04%	156.69%	135.57%
9	119.18%	144.59%	129.10%
10	135.92%	155.41%	143.53%
11	133.88%	163.69%	145.52%
12	134.29%	177.71%	151.24%
13	128.16%	210.19%	160.20%
14	113.06%	194.27%	144.78%
15	110.61%	185.35%	139.80%
16	97.55%	168.79%	125.37%
17	109.39%	184.71%	138.81%
18	106.94%	187.26%	138.31%
19	93.47%	187.90%	130.35%
20	91.43%	185.35%	128.11%
21	85.71%	188.54%	125.87%
22	79.59%	182.17%	119.65%
23	78.78%	154.14%	108.21%
24	89.80%	174.52%	122.89%
25	94.69%	165.61%	122.39%
26	104.49%	161.15%	126.62%
27	103.27%	159.87%	125.37%
28	100.41%	171.34%	128.11%
29	103.27%	166.24%	127.86%
30	99.18%	149.68%	118.91%
31	110.61%	171.97%	134.58%



November 2017 PRC Shelter Opulation Trends

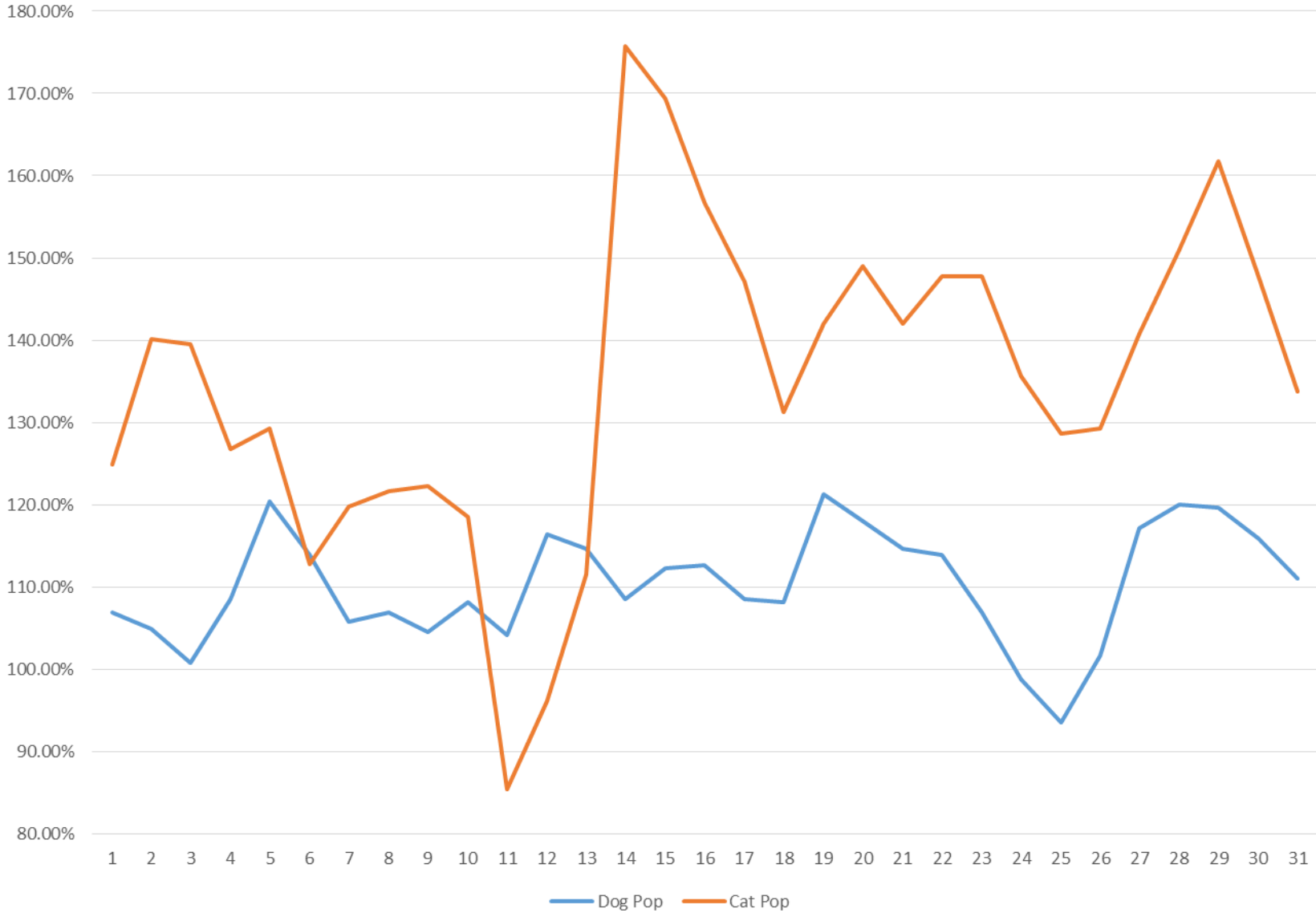


DATE	Dog Pop	Cat Pop	Shelter Pop
1	106.94%	171.97%	132.34%
2	105.71%	172.61%	131.84%
3	104.08%	185.35%	135.82%
4	103.27%	181.53%	133.83%
5	103.67%	171.97%	130.35%
6	95.92%	153.50%	118.41%
7	106.53%	170.70%	131.59%
8	106.94%	168.15%	130.85%
9	96.33%	191.72%	133.58%
10	84.08%	172.61%	118.66%
11	94.69%	191.08%	132.34%
12	91.43%	173.89%	123.63%
13	88.57%	138.85%	108.21%
14	98.78%	159.24%	122.39%
15	95.92%	153.50%	118.41%
16	92.24%	162.42%	119.65%
17	90.20%	162.42%	118.41%
18	90.20%	163.69%	118.91%
19	84.49%	128.03%	101.49%
20	95.51%	142.68%	113.93%
21	97.96%	154.78%	120.15%
22	87.76%	127.39%	103.23%
23	90.20%	128.03%	104.98%
24	105.31%	159.24%	126.37%
25	107.76%	154.14%	125.87%
26	104.49%	133.12%	115.67%
27	111.43%	145.86%	124.88%
28	108.57%	138.85%	120.40%
29	101.63%	128.66%	112.19%
30			

November 2017 PRC Shelter Population Trends

DATE	DOG POP	DOG KENNELS	POP/KENNELS	CAT POP	CAT CAGES	POP/KENNELS	TOTAL POP	TOTAL KENNEL	POP/KENNELS
1	262	245	106.94%	270	157	171.97%	532	402	132.34%
2	259	245	105.71%	271	157	172.61%	530	402	131.84%
3	255	245	104.08%	291	157	185.35%	546	402	135.82%
4	253	245	103.27%	285	157	181.53%	538	402	133.83%
5	254	245	103.67%	270	157	171.97%	524	402	130.35%
6	235	245	95.92%	241	157	153.50%	476	402	118.41%
7	261	245	106.53%	268	157	170.70%	529	402	131.59%
8	262	245	106.94%	264	157	168.15%	526	402	130.85%
9	236	245	96.33%	301	157	191.72%	537	402	133.58%
10	206	245	84.08%	271	157	172.61%	477	402	118.66%
11	232	245	94.69%	300	157	191.08%	532	402	132.34%
12	224	245	91.43%	273	157	173.89%	497	402	123.63%
13	217	245	88.57%	218	157	138.85%	435	402	108.21%
14	242	245	98.78%	250	157	159.24%	492	402	122.39%
15	235	245	95.92%	241	157	153.50%	476	402	118.41%
16	226	245	92.24%	255	157	162.42%	481	402	119.65%
17	221	245	90.20%	255	157	162.42%	476	402	118.41%
18	221	245	90.20%	257	157	163.69%	478	402	118.91%
19	221	245	90.20%	258	157	164.33%	479	402	119.15%
20	207	245	84.49%	201	157	128.03%	408	402	101.49%
21	234	245	95.51%	224	157	142.68%	458	402	113.93%
22	240	245	97.96%	243	157	154.78%	483	402	120.15%
23	215	245	87.76%	200	157	127.39%	415	402	103.23%
24	221	245	90.20%	201	157	128.03%	422	402	104.98%
25	258	245	105.31%	250	157	159.24%	508	402	126.37%
26	264	245	107.76%	242	157	154.14%	506	402	125.87%
27	256	245	104.49%	209	157	133.12%	465	402	115.67%
28	273	245	111.43%	229	157	145.86%	502	402	124.88%
29	266	245	108.57%	218	157	138.85%	484	402	120.40%
30	249	245	101.63%	202	157	128.66%	451	402	112.19%
*	Dog Kennel Built Capacity includes Kennels AD, A, B, C, and D (E & F are excluded as medical treatment areas only)								
**	Cat Cages Built Capacity includes all Lobby Cages plus holding cages in rooms I, J & K								
DATA: Source is from Chameleon with Output of "Daily Animal Population" Report (Run 5/15/2018)									

December 2017 PRC Shelter Population Trends



DATE	Dog Pop	Cat Pop	Shelter Pop
1	106.94%	124.84%	113.93%
2	104.90%	140.13%	118.66%
3	100.82%	139.49%	115.92%
4	108.57%	126.75%	115.67%
5	120.41%	129.30%	123.88%
6	113.88%	112.74%	113.43%
7	105.71%	119.75%	111.19%
8	106.94%	121.66%	112.69%
9	104.49%	122.29%	111.44%
10	108.16%	118.47%	112.19%
11	104.08%	85.35%	96.77%
12	116.33%	96.18%	108.46%
13	114.69%	111.46%	113.43%
14	108.57%	175.80%	134.83%
15	112.24%	169.43%	134.58%
16	112.65%	156.69%	129.85%
17	147.13%	123.63%	123.63%
18	108.57%	147.13%	123.63%
19	108.16%	131.21%	117.16%
20	121.22%	142.04%	129.35%
21	121.22%	129.35%	129.35%
22	117.96%	149.04%	130.10%
23	149.04%	130.10%	130.10%
24	114.69%	142.04%	125.37%
25	114.69%	125.37%	125.37%
26	113.88%	147.77%	127.11%
27	127.11%	122.89%	122.89%
28	106.94%	147.77%	122.89%
29	98.78%	135.67%	113.18%
30	93.47%	128.66%	107.21%
31	101.63%	129.30%	112.44%





2017 Annual PRC Shelter Population Trends

