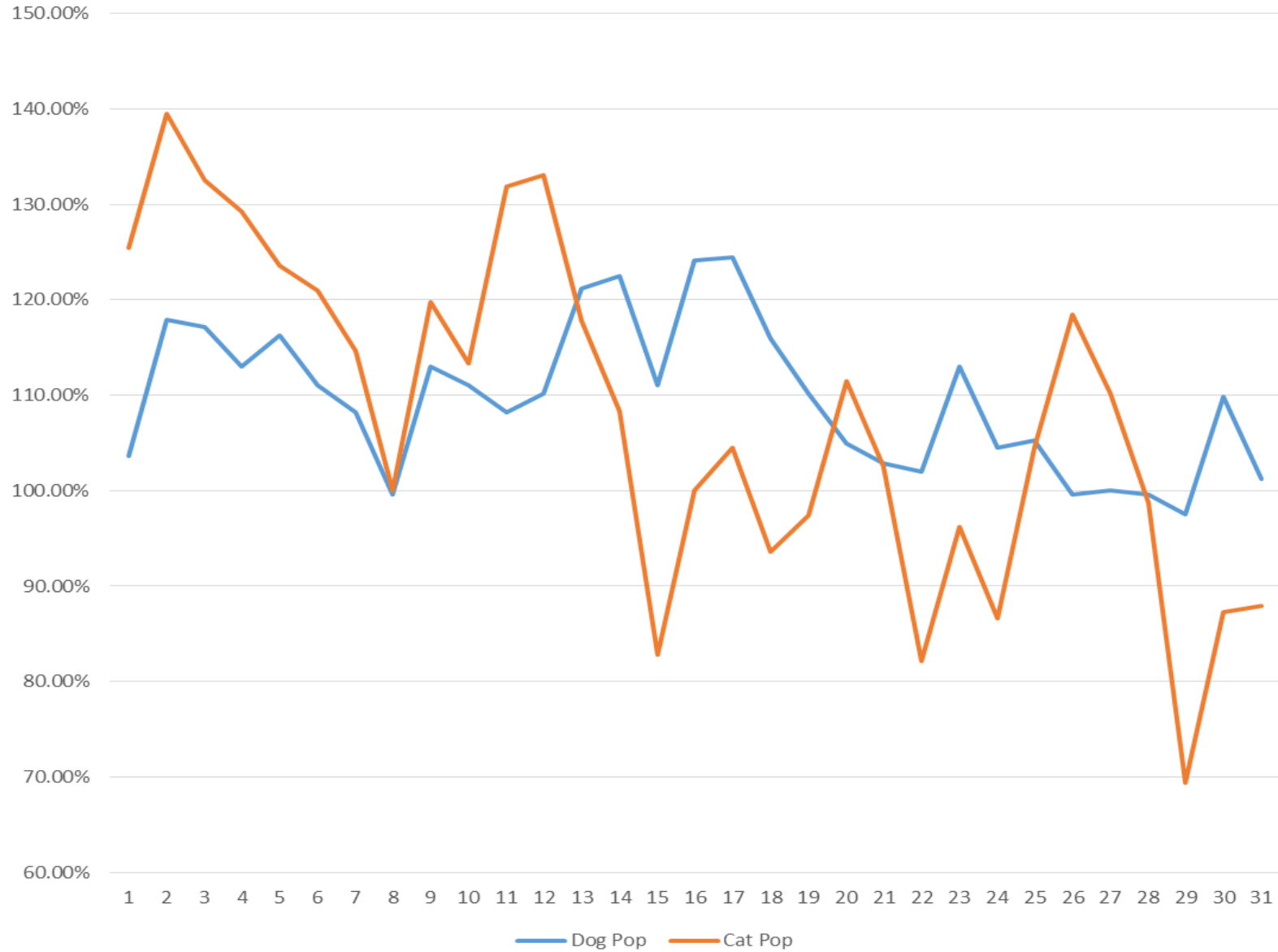


January 2018 PRC Shelter Population Trends



DATE	Dog Pop	Cat Pop	Shelter Pop
1	103.67%	125.48%	112.19%
2	117.96%	139.49%	126.37%
3	117.14%	132.48%	123.13%
4	113.06%	129.30%	119.40%
5	116.33%	123.57%	119.15%
6	111.02%	121.02%	114.93%
7	108.16%	114.65%	110.70%
8	99.59%	100.00%	99.75%
9	113.06%	119.75%	115.67%
10	111.02%	113.38%	111.94%
11	108.16%	131.85%	117.41%
12	110.20%	133.12%	119.15%
13	121.22%	117.83%	119.90%
14	122.45%	108.28%	116.92%
15	111.02%	82.80%	100.00%
16	124.08%	100.00%	114.68%
17	124.49%	104.46%	116.67%
18	115.92%	93.63%	107.21%
19	110.20%	97.45%	105.22%
20	104.90%	111.46%	107.46%
21	102.86%	102.55%	102.74%
22	102.04%	82.17%	94.28%
23	113.06%	96.18%	106.47%
24	104.49%	86.62%	97.51%
25	105.31%	104.46%	104.98%
26	99.59%	118.47%	106.97%
27	100.00%	110.19%	103.98%
28	99.59%	98.73%	99.25%
29	97.55%	69.43%	86.57%
30	109.80%	87.26%	101.00%
31	101.22%	87.90%	96.02%

January 2018 PRC Shelter Population Trends

DATE	DOG POP	DOG KENNELS	POP/KENNELS	CAT POP	CAT CAGES	POP/KENNELS	TOTAL POP	TOTAL KENNEL	POP/KENNELS
1	254	245	103.67%	197	157	125.48%	451	402	112.19%
2	289	245	117.96%	219	157	139.49%	508	402	126.37%
3	287	245	117.14%	208	157	132.48%	495	402	123.13%
4	277	245	113.06%	203	157	129.30%	480	402	119.40%
5	285	245	116.33%	194	157	123.57%	479	402	119.15%
6	272	245	111.02%	190	157	121.02%	462	402	114.93%
7	265	245	108.16%	180	157	114.65%	445	402	110.70%
8	244	245	99.59%	157	157	100.00%	401	402	99.75%
9	277	245	113.06%	188	157	119.75%	465	402	115.67%
10	272	245	111.02%	178	157	113.38%	450	402	111.94%
11	265	245	108.16%	207	157	131.85%	472	402	117.41%
12	270	245	110.20%	209	157	133.12%	479	402	119.15%
13	297	245	121.22%	185	157	117.83%	482	402	119.90%
14	300	245	122.45%	170	157	108.28%	470	402	116.92%
15	272	245	111.02%	130	157	82.80%	402	402	100.00%
16	304	245	124.08%	157	157	100.00%	461	402	114.68%
17	305	245	124.49%	164	157	104.46%	469	402	116.67%
18	284	245	115.92%	147	157	93.63%	431	402	107.21%
19	270	245	110.20%	153	157	97.45%	423	402	105.22%
20	257	245	104.90%	175	157	111.46%	432	402	107.46%
21	252	245	102.86%	161	157	102.55%	413	402	102.74%
22	250	245	102.04%	129	157	82.17%	379	402	94.28%
23	277	245	113.06%	151	157	96.18%	428	402	106.47%
24	256	245	104.49%	136	157	86.62%	392	402	97.51%
25	258	245	105.31%	164	157	104.46%	422	402	104.98%
26	244	245	99.59%	186	157	118.47%	430	402	106.97%
27	245	245	100.00%	173	157	110.19%	418	402	103.98%
28	244	245	99.59%	155	157	98.73%	399	402	99.25%
29	239	245	97.55%	109	157	69.43%	348	402	86.57%
30	269	245	109.80%	137	157	87.26%	406	402	101.00%
31	248	245	101.22%	138	157	87.90%	386	402	96.02%
* **	Dog Kennel Built Capacity includes Kennels AD, A, B, C, and D (E & F are excluded as medical treatment areas only)								
Cat Cages Built Capacity includes all Lobby Cages plus holding cages in rooms I, J & K									

February 2018 PRC Shelter Population Trends



DATE	Dog Pop	Cat Pop	Shelter Pop
1	100.41%	91.72%	97.01%
2	101.22%	87.90%	96.02%
3	98.37%	78.98%	90.80%
4	91.43%	77.07%	85.82%
5	93.06%	66.24%	82.59%
6	109.80%	71.97%	95.02%
7	102.45%	84.71%	95.52%
8	101.22%	85.35%	95.02%
9	106.12%	93.63%	101.24%
10	100.41%	103.82%	101.74%
11	91.43%	87.26%	89.80%
12	91.43%	50.96%	75.62%
13	102.45%	69.43%	89.55%
14	97.55%	75.16%	88.81%
15	91.84%	77.07%	86.07%
16	91.02%	77.71%	85.82%
17	91.02%	76.43%	85.32%
18	87.76%	71.97%	81.59%
19	87.35%	48.41%	72.14%
20	95.92%	63.06%	83.08%
21	93.06%	63.69%	81.59%
22	95.51%	56.05%	80.10%
23	95.92%	59.87%	81.84%
24	95.51%	68.15%	84.83%
25	91.02%	60.51%	79.10%
26	90.61%	45.86%	73.13%
27	102.86%	62.42%	87.06%
28	109.80%	70.06%	94.28%

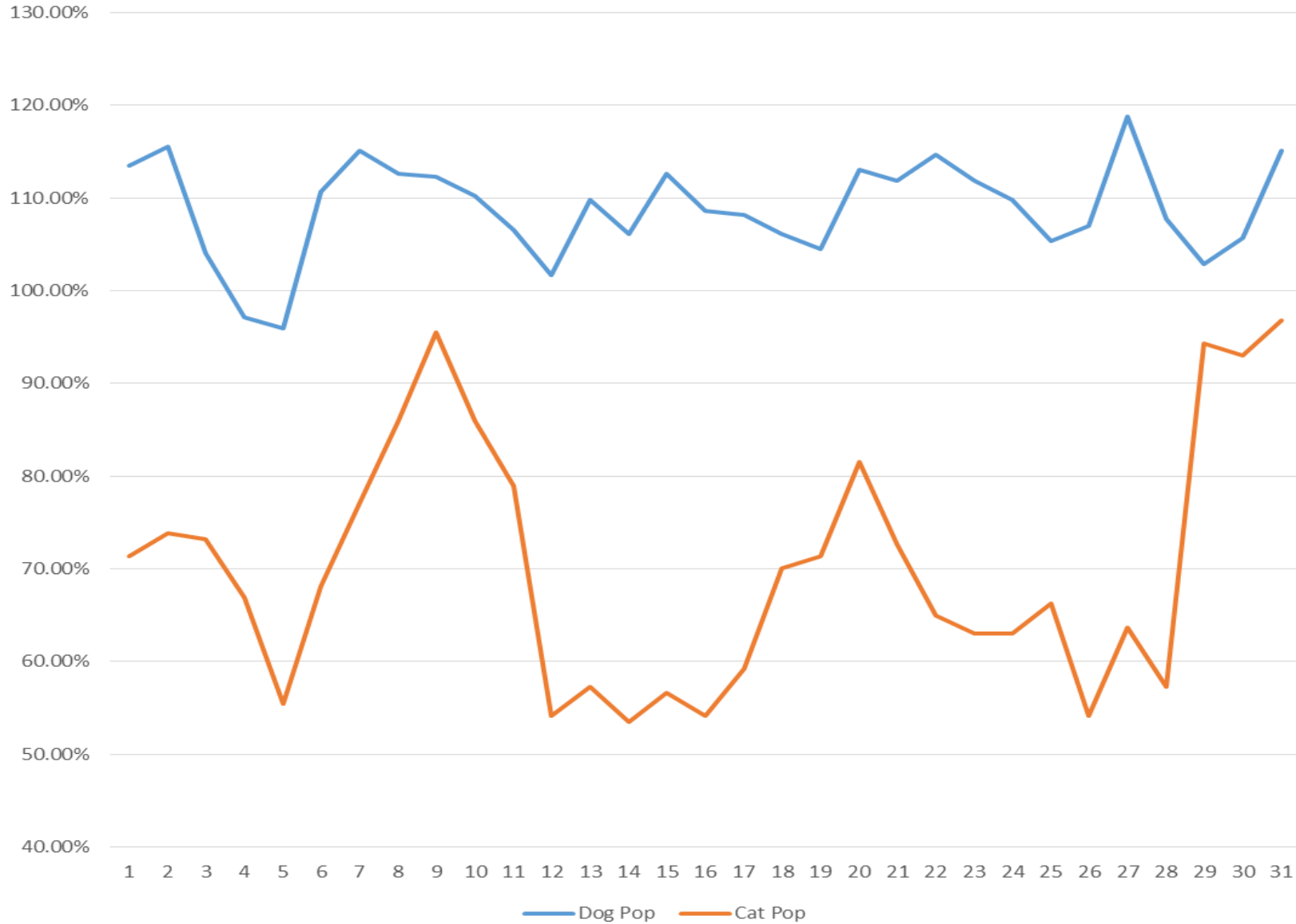
February 2018 PRC Shelter Population Trends

DATE	DOG POP	DOG KENNELS	POP/KENNELS	CAT POP	CAT CAGES	POP/KENNELS	TOTAL POP	TOTAL KENNEL	POP/KENNELS
1	246	245	100.41%	144	157	91.72%	390	402	97.01%
2	248	245	101.22%	138	157	87.90%	386	402	96.02%
3	241	245	98.37%	124	157	78.98%	365	402	90.80%
4	224	245	91.43%	121	157	77.07%	345	402	85.82%
5	228	245	93.06%	104	157	66.24%	332	402	82.59%
6	269	245	109.80%	113	157	71.97%	382	402	95.02%
7	251	245	102.45%	133	157	84.71%	384	402	95.52%
8	248	245	101.22%	134	157	85.35%	382	402	95.02%
9	260	245	106.12%	147	157	93.63%	407	402	101.24%
10	246	245	100.41%	163	157	103.82%	409	402	101.74%
11	224	245	91.43%	137	157	87.26%	361	402	89.80%
12	224	245	91.43%	80	157	50.96%	304	402	75.62%
13	251	245	102.45%	109	157	69.43%	360	402	89.55%
14	239	245	97.55%	118	157	75.16%	357	402	88.81%
15	225	245	91.84%	121	157	77.07%	346	402	86.07%
16	223	245	91.02%	122	157	77.71%	345	402	85.82%
17	223	245	91.02%	120	157	76.43%	343	402	85.32%
18	215	245	87.76%	113	157	71.97%	328	402	81.59%
19	214	245	87.35%	76	157	48.41%	290	402	72.14%
20	235	245	95.92%	99	157	63.06%	334	402	83.08%
21	228	245	93.06%	100	157	63.69%	328	402	81.59%
22	234	245	95.51%	88	157	56.05%	322	402	80.10%
23	235	245	95.92%	94	157	59.87%	329	402	81.84%
24	234	245	95.51%	107	157	68.15%	341	402	84.83%
25	223	245	91.02%	95	157	60.51%	318	402	79.10%
26	222	245	90.61%	72	157	45.86%	294	402	73.13%
27	252	245	102.86%	98	157	62.42%	350	402	87.06%
28	269	245	109.80%	110	157	70.06%	379	402	94.28%

\* Dog Kennel Built Capacity includes Kennels AD, A, B, C, and D (E & F are excluded as medical treatment areas only)

\*\* Cat Cages Built Capacity includes all Lobby Cages plus holding cages in rooms I, J & K

March 2018 PRC Shelter Population Trends

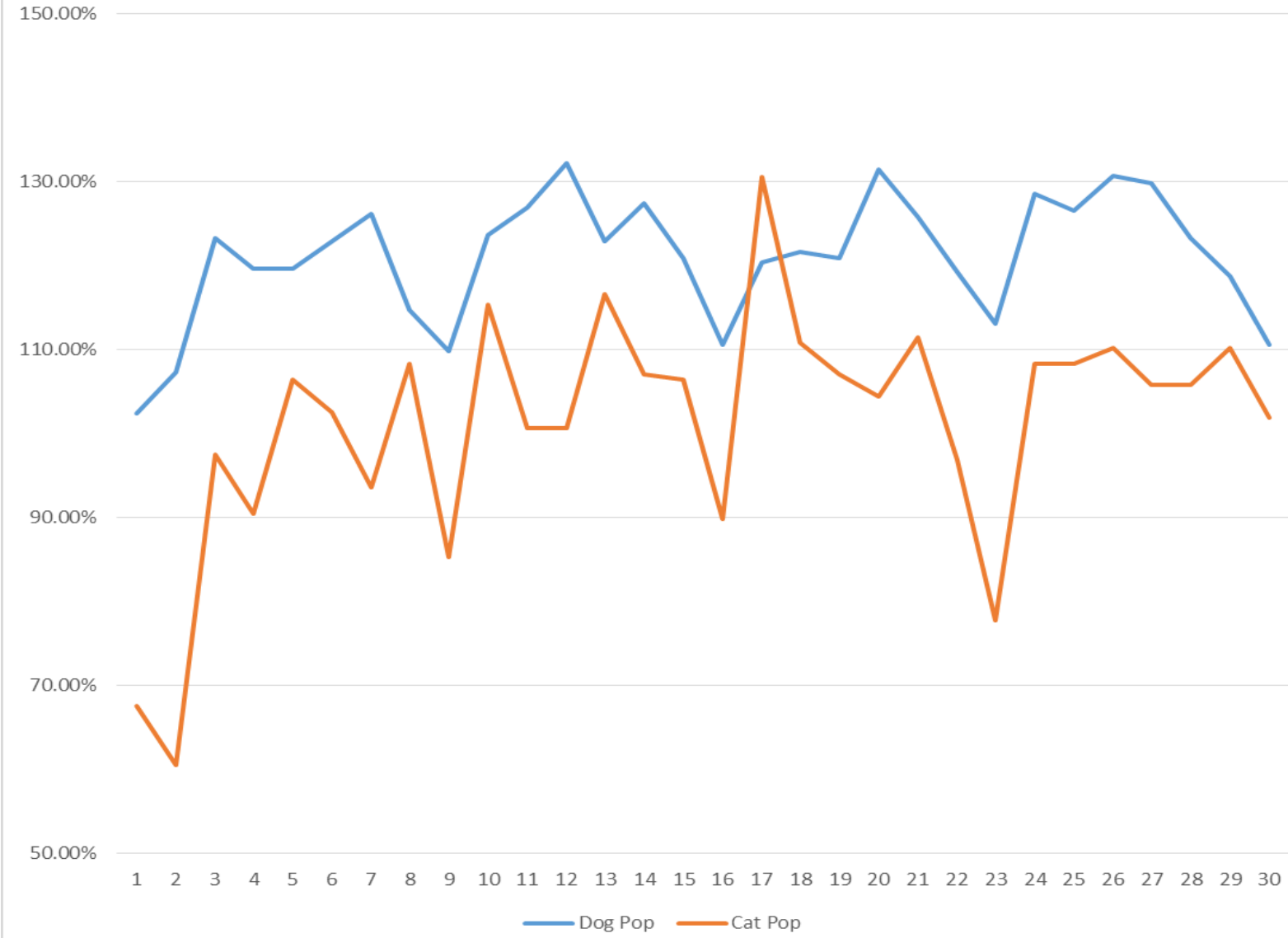


DATE	Dog Pop	Cat Pop	Shelter Pop
1	113.47%	71.34%	97.01%
2	115.51%	73.89%	99.25%
3	104.08%	73.25%	92.04%
4	97.14%	66.88%	85.32%
5	95.92%	55.41%	80.10%
6	110.61%	68.15%	94.03%
7	115.10%	77.07%	100.25%
8	112.65%	85.99%	102.24%
9	112.24%	95.54%	105.72%
10	110.20%	85.99%	100.75%
11	106.53%	78.98%	95.77%
12	101.63%	54.14%	83.08%
13	109.80%	57.32%	89.30%
14	106.12%	53.50%	85.57%
15	112.65%	56.69%	90.80%
16	108.57%	54.14%	87.31%
17	108.16%	59.24%	89.05%
18	106.12%	70.06%	92.04%
19	104.49%	71.34%	91.54%
20	113.06%	81.53%	100.75%
21	111.84%	72.61%	96.52%
22	114.69%	64.97%	95.27%
23	111.84%	63.06%	92.79%
24	109.80%	63.06%	91.54%
25	105.31%	66.24%	90.05%
26	106.94%	54.14%	86.32%
27	118.78%	63.69%	97.26%
28	107.76%	57.32%	88.06%
29	102.86%	94.27%	99.50%
30	105.71%	92.99%	100.75%
31	115.10%	96.82%	107.96%

March 2018 PRC Shelter Population Trends

DATE	DOG POP	DOG KENNELS	POP/KENNELS	CAT POP	CAT CAGES	POP/KENNELS	TOTAL POP	TOTAL KENNEL	POP/KENNELS
1	278	245	113.47%	112	157	71.34%	390	402	97.01%
2	283	245	115.51%	116	157	73.89%	399	402	99.25%
3	255	245	104.08%	115	157	73.25%	370	402	92.04%
4	238	245	97.14%	105	157	66.88%	343	402	85.32%
5	235	245	95.92%	87	157	55.41%	322	402	80.10%
6	271	245	110.61%	107	157	68.15%	378	402	94.03%
7	282	245	115.10%	121	157	77.07%	403	402	100.25%
8	276	245	112.65%	135	157	85.99%	411	402	102.24%
9	275	245	112.24%	150	157	95.54%	425	402	105.72%
10	270	245	110.20%	135	157	85.99%	405	402	100.75%
11	261	245	106.53%	124	157	78.98%	385	402	95.77%
12	249	245	101.63%	85	157	54.14%	334	402	83.08%
13	269	245	109.80%	90	157	57.32%	359	402	89.30%
14	260	245	106.12%	84	157	53.50%	344	402	85.57%
15	276	245	112.65%	89	157	56.69%	365	402	90.80%
16	266	245	108.57%	85	157	54.14%	351	402	87.31%
17	265	245	108.16%	93	157	59.24%	358	402	89.05%
18	260	245	106.12%	110	157	70.06%	370	402	92.04%
19	256	245	104.49%	112	157	71.34%	368	402	91.54%
20	277	245	113.06%	128	157	81.53%	405	402	100.75%
21	274	245	111.84%	114	157	72.61%	388	402	96.52%
22	281	245	114.69%	102	157	64.97%	383	402	95.27%
23	274	245	111.84%	99	157	63.06%	373	402	92.79%
24	269	245	109.80%	99	157	63.06%	368	402	91.54%
25	258	245	105.31%	104	157	66.24%	362	402	90.05%
26	262	245	106.94%	85	157	54.14%	347	402	86.32%
27	291	245	118.78%	100	157	63.69%	391	402	97.26%
28	264	245	107.76%	90	157	57.32%	354	402	88.06%
29	252	245	102.86%	148	157	94.27%	400	402	99.50%
30	259	245	105.71%	146	157	92.99%	405	402	100.75%
31	282	245	115.10%	152	157	96.82%	434	402	107.96%
*	Dog Kennel Built Capacity includes Kennels AD, A, B, C, and D (E & F are excluded as medical treatment areas only)								
**	Cat Cages Built Capacity includes all Lobby Cages plus holding cages in rooms I, J & K								

April 2018 Shelter Population Trends



DATE	Dog Pop	Cat Pop	Shelter Pop
1	102.45%	67.52%	88.81%
2	107.35%	60.51%	89.05%
3	123.27%	97.45%	113.18%
4	119.59%	90.45%	108.21%
5	119.59%	106.37%	114.43%
6	122.86%	102.55%	114.93%
7	126.12%	93.63%	113.43%
8	114.69%	108.28%	112.19%
9	109.80%	85.35%	100.25%
10	123.67%	115.29%	120.40%
11	126.94%	100.64%	116.67%
12	132.24%	100.64%	119.90%
13	122.86%	116.56%	120.40%
14	127.35%	107.01%	119.40%
15	120.82%	106.37%	115.17%
16	110.61%	89.81%	102.49%
17	120.41%	130.57%	124.38%
18	121.63%	110.83%	117.41%
19	120.82%	107.01%	115.42%
20	131.43%	104.46%	120.90%
21	125.71%	111.46%	120.15%
22	119.18%	96.82%	110.45%
23	113.06%	77.71%	99.25%
24	128.57%	108.28%	120.65%
25	126.53%	108.28%	119.40%
26	130.61%	110.19%	122.64%
27	129.80%	105.73%	120.40%
28	123.27%	105.73%	116.42%
29	118.78%	110.19%	115.42%
30	110.61%	101.91%	107.21%

April 2018 PRC Shelter Population Trends

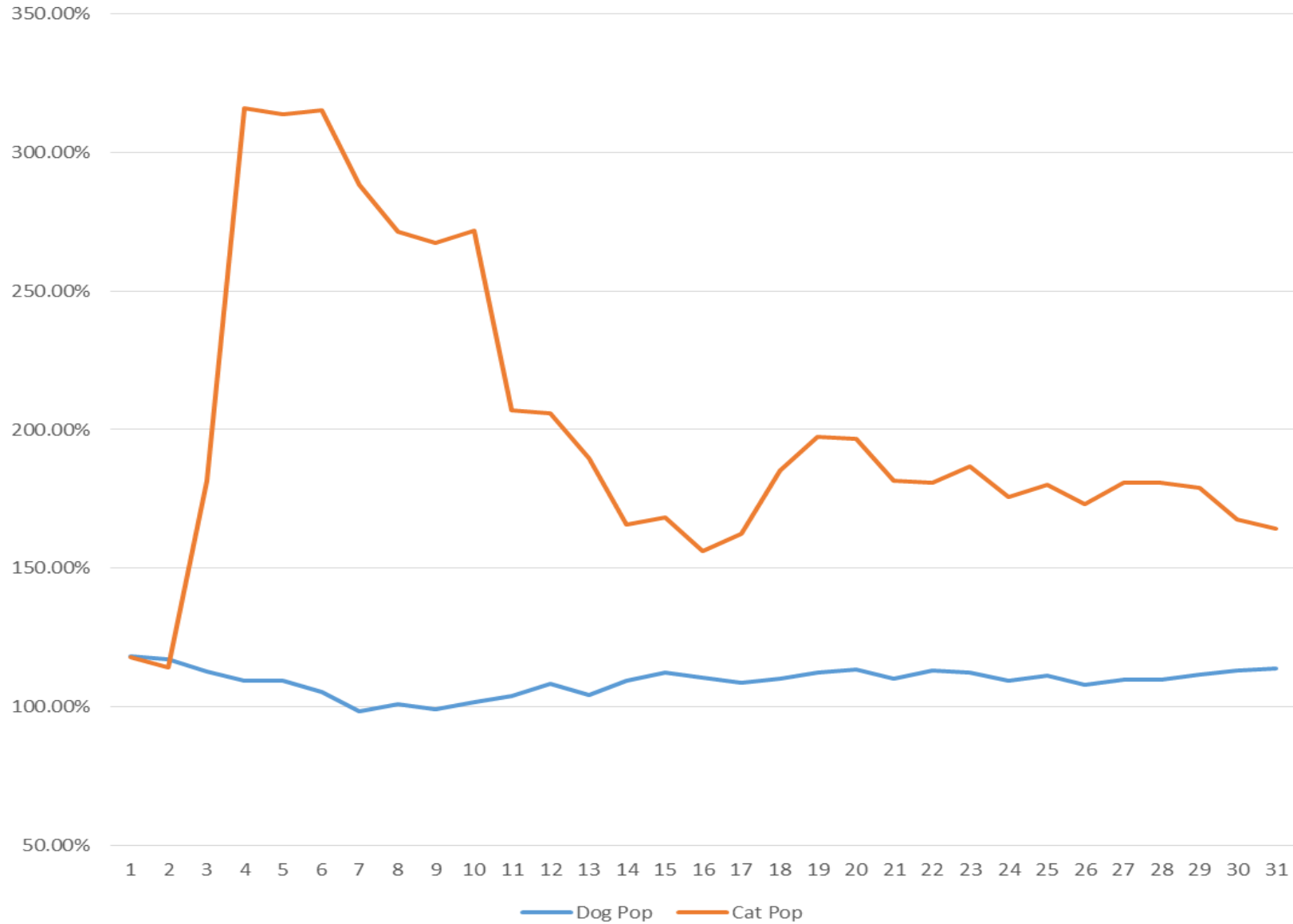
DATE	DOG POP	DOG KENNELS	POP/KENNELS	CAT POP	CAT CAGES	POP/KENNELS	TOTAL POP	TOTAL KENNEL	POP/KENNELS
1	251	245	102.45%	106	157	67.52%	357	402	88.81%
2	263	245	107.35%	95	157	60.51%	358	402	89.05%
3	302	245	123.27%	153	157	97.45%	455	402	113.18%
4	293	245	119.59%	142	157	90.45%	435	402	108.21%
5	293	245	119.59%	167	157	106.37%	460	402	114.43%
6	301	245	122.86%	161	157	102.55%	462	402	114.93%
7	309	245	126.12%	147	157	93.63%	456	402	113.43%
8	281	245	114.69%	170	157	108.28%	451	402	112.19%
9	269	245	109.80%	134	157	85.35%	403	402	100.25%
10	303	245	123.67%	181	157	115.29%	484	402	120.40%
11	311	245	126.94%	158	157	100.64%	469	402	116.67%
12	324	245	132.24%	158	157	100.64%	482	402	119.90%
13	301	245	122.86%	183	157	116.56%	484	402	120.40%
14	312	245	127.35%	168	157	107.01%	480	402	119.40%
15	296	245	120.82%	167	157	106.37%	463	402	115.17%
16	271	245	110.61%	141	157	89.81%	412	402	102.49%
17	295	245	120.41%	205	157	130.57%	500	402	124.38%
18	298	245	121.63%	174	157	110.83%	472	402	117.41%
19	296	245	120.82%	168	157	107.01%	464	402	115.42%
20	322	245	131.43%	164	157	104.46%	486	402	120.90%
21	308	245	125.71%	175	157	111.46%	483	402	120.15%
22	292	245	119.18%	152	157	96.82%	444	402	110.45%
23	277	245	113.06%	122	157	77.71%	399	402	99.25%
24	315	245	128.57%	170	157	108.28%	485	402	120.65%
25	310	245	126.53%	170	157	108.28%	480	402	119.40%
26	320	245	130.61%	173	157	110.19%	493	402	122.64%
27	318	245	129.80%	166	157	105.73%	484	402	120.40%
28	302	245	123.27%	166	157	105.73%	468	402	116.42%
29	291	245	118.78%	173	157	110.19%	464	402	115.42%
30	271	245	110.61%	160	157	101.91%	431	402	107.21%

\* Dog Kennel Built Capacity includes Kennels AD, A, B, C, and D (E & F are excluded as medical treatment areas only)

\*\* Cat Cages Built Capacity includes all Lobby Cages plus holding cages in rooms I, J & K



May 2018 Shelter Population Trends

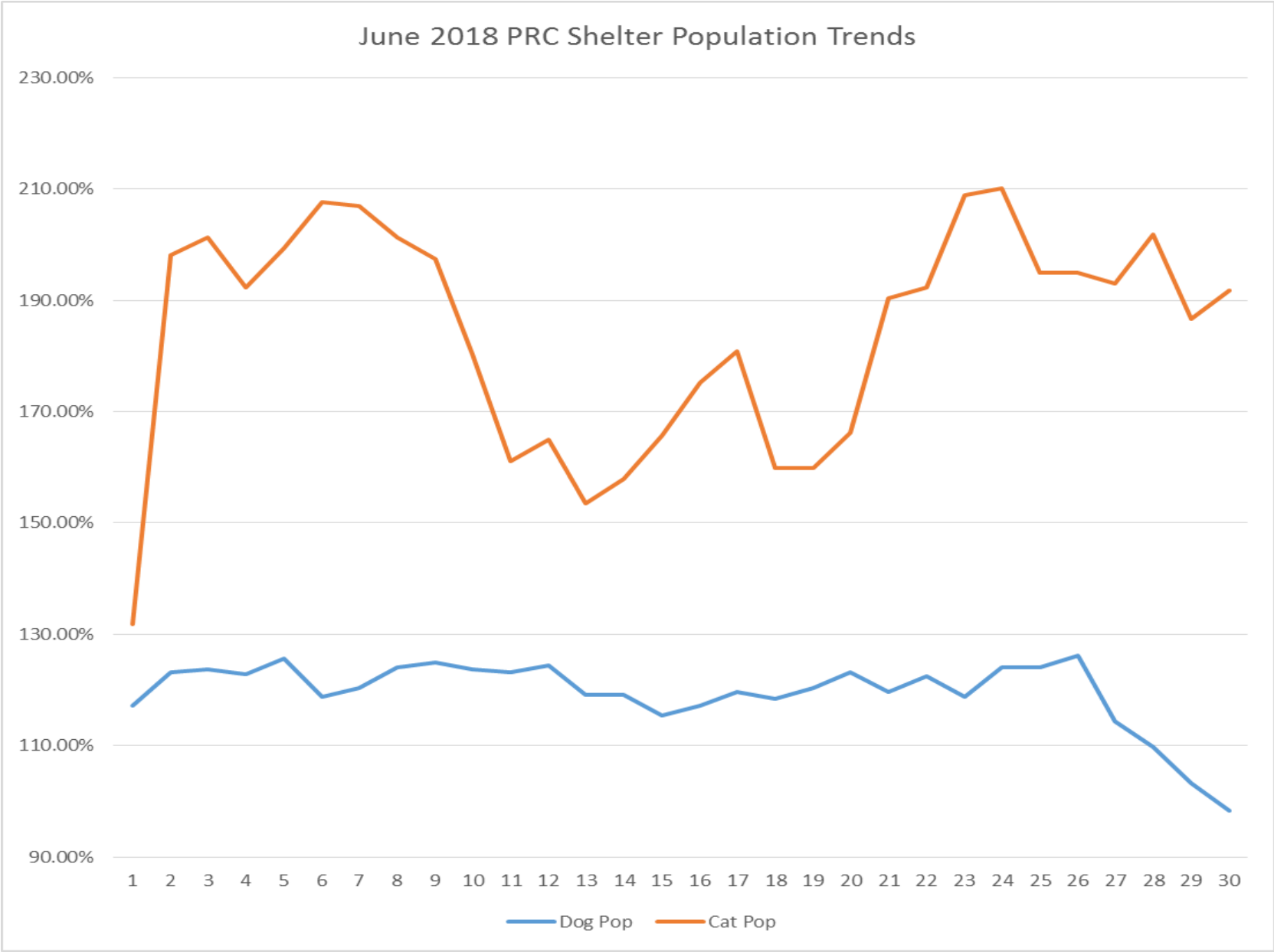


DATE	Dog Pop	Cat Pop	Shelter Pop
1	118.37%	117.83%	118.16%
2	117.14%	114.01%	115.92%
3	112.65%	181.53%	139.55%
4	109.39%	315.92%	190.05%
5	109.39%	314.01%	189.30%
6	105.31%	315.29%	187.31%
7	98.37%	288.54%	172.64%
8	100.82%	271.34%	167.41%
9	99.18%	267.52%	164.93%
10	101.63%	271.97%	168.16%
11	103.67%	207.01%	144.03%
12	108.16%	205.73%	146.27%
13	104.08%	189.81%	137.56%
14	109.39%	165.61%	131.34%
15	112.24%	168.15%	134.08%
16	110.61%	156.05%	128.36%
17	108.57%	162.42%	129.60%
18	110.20%	185.35%	139.55%
19	112.24%	197.45%	145.52%
20	113.47%	196.82%	146.02%
21	110.20%	181.53%	138.06%
22	113.06%	180.89%	139.55%
23	112.24%	186.62%	141.29%
24	109.39%	175.80%	135.32%
25	111.02%	180.25%	138.06%
26	107.76%	173.25%	133.33%
27	109.80%	180.89%	137.56%
28	109.80%	180.89%	137.56%
29	111.43%	178.98%	137.81%
30	113.06%	167.52%	134.33%
31	113.88%	164.33%	133.58%

May 2018 PRC Shelter Population Trends

DATE	DOG POP	DOG KENNELS	POP/KENNELS	CAT POP	CAT CAGES	POP/KENNELS	TOTAL POP	TOTAL KENNEL	POP/KENNELS
1	290	245	118.37%	185	157	117.83%	475	402	118.16%
2	287	245	117.14%	179	157	114.01%	466	402	115.92%
3	276	245	112.65%	285	157	181.53%	561	402	139.55%
4	268	245	109.39%	496	157	315.92%	764	402	190.05%
5	268	245	109.39%	493	157	314.01%	761	402	189.30%
6	258	245	105.31%	495	157	315.29%	753	402	187.31%
7	241	245	98.37%	453	157	288.54%	694	402	172.64%
8	247	245	100.82%	426	157	271.34%	673	402	167.41%
9	243	245	99.18%	420	157	267.52%	663	402	164.93%
10	249	245	101.63%	427	157	271.97%	676	402	168.16%
11	254	245	103.67%	325	157	207.01%	579	402	144.03%
12	265	245	108.16%	323	157	205.73%	588	402	146.27%
13	255	245	104.08%	298	157	189.81%	553	402	137.56%
14	268	245	109.39%	260	157	165.61%	528	402	131.34%
15	275	245	112.24%	264	157	168.15%	539	402	134.08%
16	271	245	110.61%	245	157	156.05%	516	402	128.36%
17	266	245	108.57%	255	157	162.42%	521	402	129.60%
18	270	245	110.20%	291	157	185.35%	561	402	139.55%
19	275	245	112.24%	310	157	197.45%	585	402	145.52%
20	278	245	113.47%	309	157	196.82%	587	402	146.02%
21	270	245	110.20%	285	157	181.53%	555	402	138.06%
22	277	245	113.06%	284	157	180.89%	561	402	139.55%
23	275	245	112.24%	293	157	186.62%	568	402	141.29%
24	268	245	109.39%	276	157	175.80%	544	402	135.32%
25	272	245	111.02%	283	157	180.25%	555	402	138.06%
26	264	245	107.76%	272	157	173.25%	536	402	133.33%
27	269	245	109.80%	284	157	180.89%	553	402	137.56%
28	269	245	109.80%	284	157	180.89%	553	402	137.56%
29	273	245	111.43%	281	157	178.98%	554	402	137.81%
30	277	245	113.06%	263	157	167.52%	540	402	134.33%
31	279	245	113.88%	258	157	164.33%	537	402	133.58%
*	Dog Kennel Built Capacity includes Kennels AD, A, B, C, and D (E & F are excluded as medical treatment areas only)								
**	Cat Cages Built Capacity includes all Lobby Cages plus holding cages in rooms I, J & K								

June 2018 PRC Shelter Population Trends

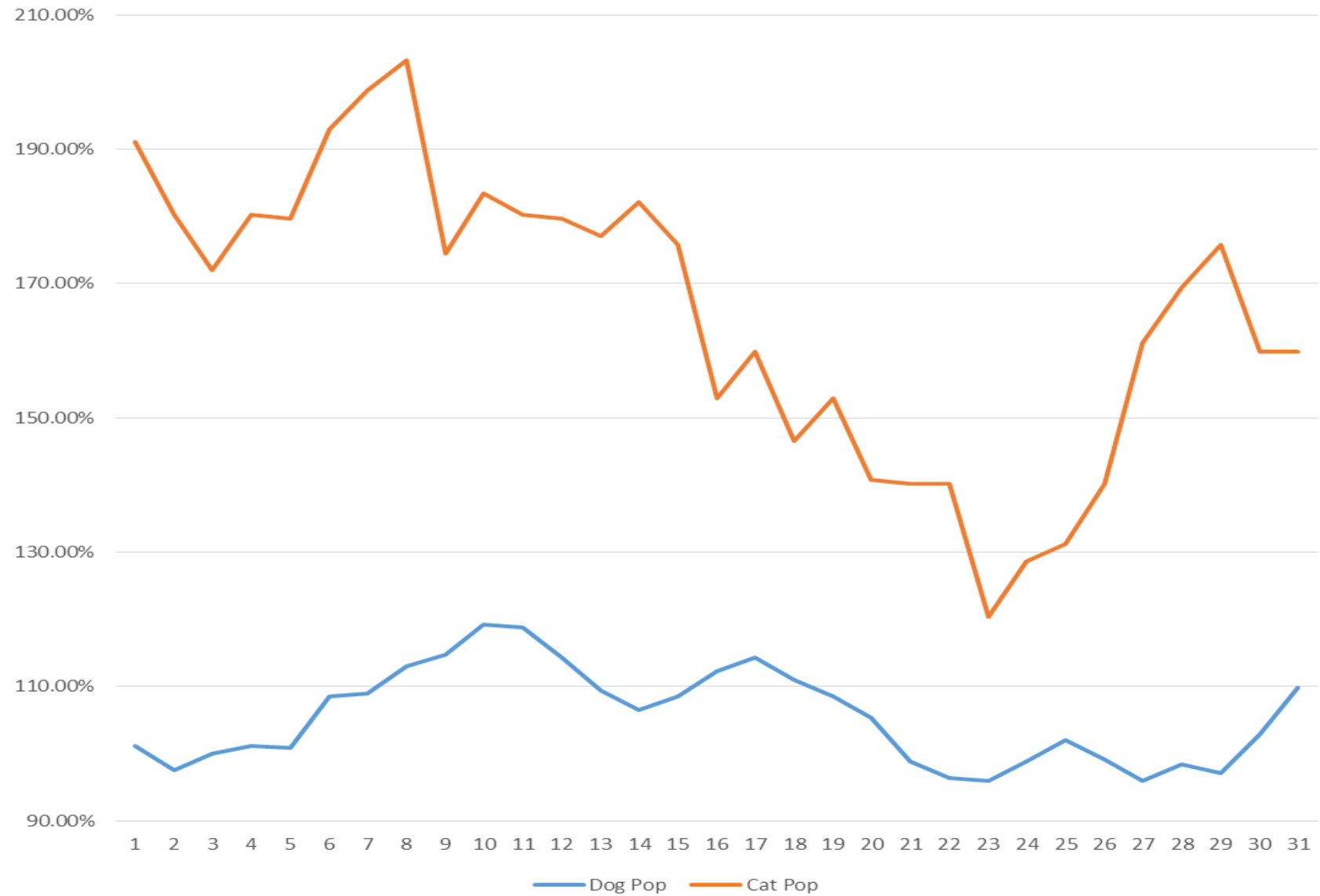


DATE	Dog Pop	Cat Pop	Shelter Pop
1	117.14%	131.85%	122.89%
2	123.27%	198.09%	152.49%
3	123.67%	201.27%	153.98%
4	122.86%	192.36%	150.00%
5	125.71%	199.36%	154.48%
6	118.78%	207.64%	153.48%
7	120.41%	207.01%	154.23%
8	124.08%	201.27%	154.23%
9	124.90%	197.45%	153.23%
10	123.67%	180.25%	145.77%
11	123.27%	161.15%	138.06%
12	124.49%	164.97%	140.30%
13	119.18%	153.50%	132.59%
14	119.18%	157.96%	134.33%
15	115.51%	165.61%	135.07%
16	117.14%	175.16%	139.80%
17	119.59%	180.89%	143.53%
18	118.37%	159.87%	134.58%
19	120.41%	159.87%	135.82%
20	123.27%	166.24%	140.05%
21	119.59%	190.45%	147.26%
22	122.45%	192.36%	149.75%
23	118.78%	208.92%	153.98%
24	124.08%	210.19%	157.71%
25	124.08%	194.90%	151.74%
26	126.12%	194.90%	152.99%
27	114.29%	192.99%	145.02%
28	109.80%	201.91%	145.77%
29	103.27%	186.62%	135.82%
30	98.37%	191.72%	134.83%

June 2018 PRC Shelter Population Trends

DATE	DOG POP	DOG KENNELS	POP/KENNELS	CAT POP	CAT CAGES	POP/KENNELS	TOTAL POP	TOTAL KENNEL	POP/KENNELS
1	287	245	117.14%	207	157	131.85%	494	402	122.89%
2	302	245	123.27%	311	157	198.09%	613	402	152.49%
3	303	245	123.67%	316	157	201.27%	619	402	153.98%
4	301	245	122.86%	302	157	192.36%	603	402	150.00%
5	308	245	125.71%	313	157	199.36%	621	402	154.48%
6	291	245	118.78%	326	157	207.64%	617	402	153.48%
7	295	245	120.41%	325	157	207.01%	620	402	154.23%
8	304	245	124.08%	316	157	201.27%	620	402	154.23%
9	306	245	124.90%	310	157	197.45%	616	402	153.23%
10	303	245	123.67%	283	157	180.25%	586	402	145.77%
11	302	245	123.27%	253	157	161.15%	555	402	138.06%
12	305	245	124.49%	259	157	164.97%	564	402	140.30%
13	292	245	119.18%	241	157	153.50%	533	402	132.59%
14	292	245	119.18%	248	157	157.96%	540	402	134.33%
15	283	245	115.51%	260	157	165.61%	543	402	135.07%
16	287	245	117.14%	275	157	175.16%	562	402	139.80%
17	293	245	119.59%	284	157	180.89%	577	402	143.53%
18	290	245	118.37%	251	157	159.87%	541	402	134.58%
19	295	245	120.41%	251	157	159.87%	546	402	135.82%
20	302	245	123.27%	261	157	166.24%	563	402	140.05%
21	293	245	119.59%	299	157	190.45%	592	402	147.26%
22	300	245	122.45%	302	157	192.36%	602	402	149.75%
23	291	245	118.78%	328	157	208.92%	619	402	153.98%
24	304	245	124.08%	330	157	210.19%	634	402	157.71%
25	304	245	124.08%	306	157	194.90%	610	402	151.74%
26	309	245	126.12%	306	157	194.90%	615	402	152.99%
27	280	245	114.29%	303	157	192.99%	583	402	145.02%
28	269	245	109.80%	317	157	201.91%	586	402	145.77%
29	253	245	103.27%	293	157	186.62%	546	402	135.82%
30	241	245	98.37%	301	157	191.72%	542	402	134.83%
*	Dog Kennel Built Capacity includes Kennels AD, A, B, C, and D (E & F are excluded as medical treatment areas only)								
**	Cat Cages Built Capacity includes all Lobby Cages plus holding cages in rooms I, J & K								

July 2018 PRC Shelter Population Trends

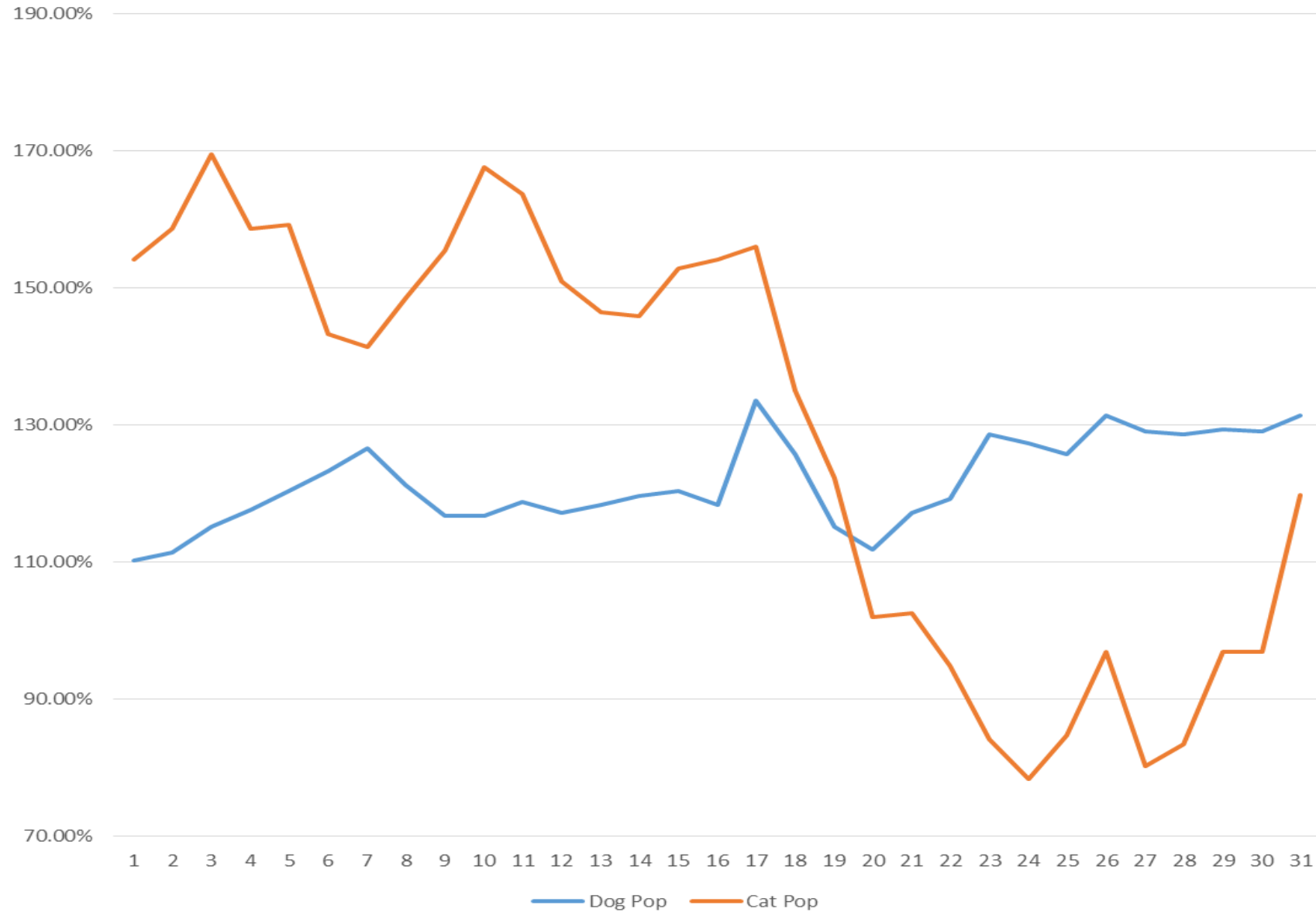


DATE	Dog Pop	Cat Pop	Shelter Pop
1	101.22%	191.08%	136.32%
2	97.55%	180.25%	129.85%
3	100.00%	171.97%	128.11%
4	101.22%	180.25%	132.09%
5	100.82%	179.62%	131.59%
6	108.57%	192.99%	141.54%
7	108.98%	198.73%	144.03%
8	113.06%	203.18%	148.26%
9	114.69%	174.52%	138.06%
10	119.18%	183.44%	144.28%
11	118.78%	180.25%	142.79%
12	114.29%	179.62%	139.80%
13	109.39%	177.07%	135.82%
14	106.53%	182.17%	136.07%
15	108.57%	175.80%	134.83%
16	112.24%	152.87%	128.11%
17	114.29%	159.87%	132.09%
18	111.02%	146.50%	124.88%
19	108.57%	152.87%	125.87%
20	105.31%	140.76%	119.15%
21	98.78%	140.13%	114.93%
22	96.33%	140.13%	113.43%
23	95.92%	120.38%	105.47%
24	98.78%	128.66%	110.45%
25	102.04%	131.21%	113.43%
26	99.18%	140.13%	115.17%
27	95.92%	161.15%	121.39%
28	98.37%	169.43%	126.12%
29	97.14%	175.80%	127.86%
30	102.86%	159.87%	125.12%
31	109.80%	159.87%	129.35%

July 2018 PRC Shelter Population Trends

DATE	DOG POP	DOG KENNELS	POP/KENNELS	CAT POP	CAT CAGES	POP/KENNELS	TOTAL POP	TOTAL KENNEL	POP/KENNELS
1	248	245	101.22%	300	157	191.08%	548	402	136.32%
2	239	245	97.55%	283	157	180.25%	522	402	129.85%
3	245	245	100.00%	270	157	171.97%	515	402	128.11%
4	248	245	101.22%	283	157	180.25%	531	402	132.09%
5	247	245	100.82%	282	157	179.62%	529	402	131.59%
6	266	245	108.57%	303	157	192.99%	569	402	141.54%
7	267	245	108.98%	312	157	198.73%	579	402	144.03%
8	277	245	113.06%	319	157	203.18%	596	402	148.26%
9	281	245	114.69%	274	157	174.52%	555	402	138.06%
10	292	245	119.18%	288	157	183.44%	580	402	144.28%
11	291	245	118.78%	283	157	180.25%	574	402	142.79%
12	280	245	114.29%	282	157	179.62%	562	402	139.80%
13	268	245	109.39%	278	157	177.07%	546	402	135.82%
14	261	245	106.53%	286	157	182.17%	547	402	136.07%
15	266	245	108.57%	276	157	175.80%	542	402	134.83%
16	275	245	112.24%	240	157	152.87%	515	402	128.11%
17	280	245	114.29%	251	157	159.87%	531	402	132.09%
18	272	245	111.02%	230	157	146.50%	502	402	124.88%
19	266	245	108.57%	240	157	152.87%	506	402	125.87%
20	258	245	105.31%	221	157	140.76%	479	402	119.15%
21	242	245	98.78%	220	157	140.13%	462	402	114.93%
22	236	245	96.33%	220	157	140.13%	456	402	113.43%
23	235	245	95.92%	189	157	120.38%	424	402	105.47%
24	242	245	98.78%	202	157	128.66%	444	402	110.45%
25	250	245	102.04%	206	157	131.21%	456	402	113.43%
26	243	245	99.18%	220	157	140.13%	463	402	115.17%
27	235	245	95.92%	253	157	161.15%	488	402	121.39%
28	241	245	98.37%	266	157	169.43%	507	402	126.12%
29	238	245	97.14%	276	157	175.80%	514	402	127.86%
30	252	245	102.86%	251	157	159.87%	503	402	125.12%
31	269	245	109.80%	251	157	159.87%	520	402	129.35%
*	Dog Kennel Built Capacity includes Kennels AD, A, B, C, and D (E & F are excluded as medical treatment areas only)								
**	Cat Cages Built Capacity includes all Lobby Cages plus holding cages in rooms I, J & K								

### August 2018 PRC Shelter Population Trends



DATE	Dog Pop	Cat Pop	Shelter Pop
1	110.20%	154.14%	127.36%
2	111.43%	158.60%	129.85%
3	115.10%	169.43%	136.32%
4	117.55%	158.60%	133.58%
5	120.41%	159.24%	135.57%
6	123.27%	143.31%	131.09%
7	126.53%	141.40%	132.34%
8	121.22%	148.41%	131.84%
9	116.73%	155.41%	131.84%
10	116.73%	167.52%	136.57%
11	118.78%	163.69%	136.32%
12	117.14%	150.96%	130.35%
13	118.37%	146.50%	129.35%
14	119.59%	145.86%	129.85%
15	120.41%	152.87%	133.08%
16	118.37%	154.14%	132.34%
17	133.47%	156.05%	142.29%
18	125.71%	135.03%	129.35%
19	115.10%	122.29%	117.91%
20	111.84%	101.91%	107.96%
21	117.14%	102.55%	111.44%
22	119.18%	94.90%	109.70%
23	128.57%	84.08%	111.19%
24	127.35%	78.34%	108.21%
25	125.71%	84.71%	109.70%
26	131.43%	96.82%	117.91%
27	128.98%	80.25%	109.95%
28	128.57%	83.44%	110.95%
29	129.39%	96.82%	116.67%
30	128.98%	96.82%	116.42%
31	131.43%	119.75%	126.87%

August 2018 PRC Shelter Population Trends

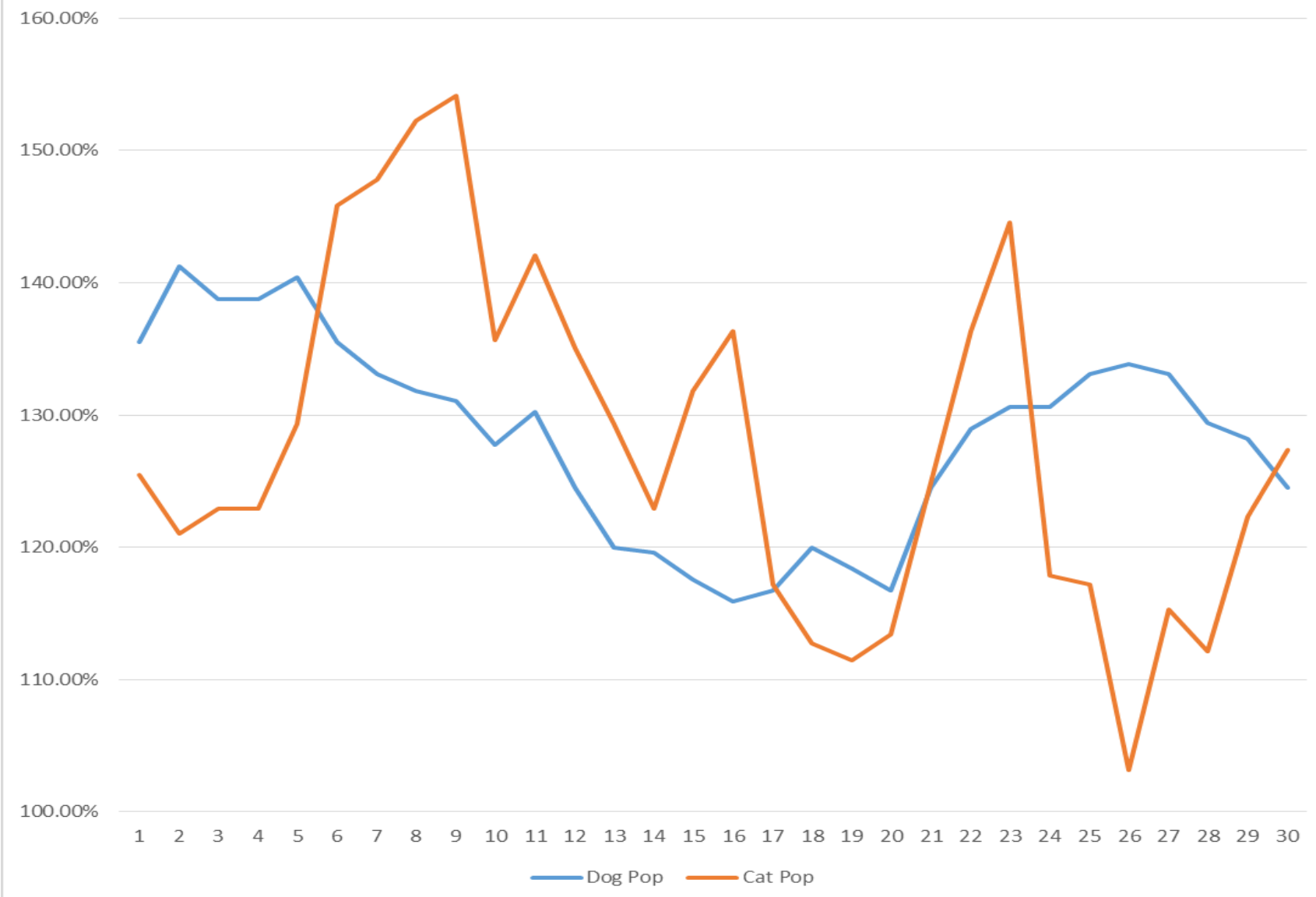
DATE	DOG POP	DOG KENNELS	POP/KENNELS	CAT POP	CAT CAGES	POP/KENNELS	TOTAL POP	TOTAL KENNEL	POP/KENNELS
1	270	245	110.20%	242	157	154.14%	512	402	127.36%
2	273	245	111.43%	249	157	158.60%	522	402	129.85%
3	282	245	115.10%	266	157	169.43%	548	402	136.32%
4	288	245	117.55%	249	157	158.60%	537	402	133.58%
5	295	245	120.41%	250	157	159.24%	545	402	135.57%
6	302	245	123.27%	225	157	143.31%	527	402	131.09%
7	310	245	126.53%	222	157	141.40%	532	402	132.34%
8	297	245	121.22%	233	157	148.41%	530	402	131.84%
9	286	245	116.73%	244	157	155.41%	530	402	131.84%
10	286	245	116.73%	263	157	167.52%	549	402	136.57%
11	291	245	118.78%	257	157	163.69%	548	402	136.32%
12	287	245	117.14%	237	157	150.96%	524	402	130.35%
13	290	245	118.37%	230	157	146.50%	520	402	129.35%
14	293	245	119.59%	229	157	145.86%	522	402	129.85%
15	295	245	120.41%	240	157	152.87%	535	402	133.08%
16	290	245	118.37%	242	157	154.14%	532	402	132.34%
17	327	245	133.47%	245	157	156.05%	572	402	142.29%
18	308	245	125.71%	212	157	135.03%	520	402	129.35%
19	282	245	115.10%	192	157	122.29%	474	402	117.91%
20	274	245	111.84%	160	157	101.91%	434	402	107.96%
21	287	245	117.14%	161	157	102.55%	448	402	111.44%
22	292	245	119.18%	149	157	94.90%	441	402	109.70%
23	315	245	128.57%	132	157	84.08%	447	402	111.19%
24	312	245	127.35%	123	157	78.34%	435	402	108.21%
25	308	245	125.71%	133	157	84.71%	441	402	109.70%
26	322	245	131.43%	152	157	96.82%	474	402	117.91%
27	316	245	128.98%	126	157	80.25%	442	402	109.95%
28	315	245	128.57%	131	157	83.44%	446	402	110.95%
29	317	245	129.39%	152	157	96.82%	469	402	116.67%
30	316	245	128.98%	152	157	96.82%	468	402	116.42%
31	322	245	131.43%	188	157	119.75%	510	402	126.87%

\* Dog Kennel Built Capacity includes Kennels AD, A, B, C, and D (E & F are excluded as medical treatment areas only)

\*\* Cat Cages Built Capacity includes all Lobby Cages plus holding cages in rooms I, J & K



September 2018 PRC Shelter Population Trends

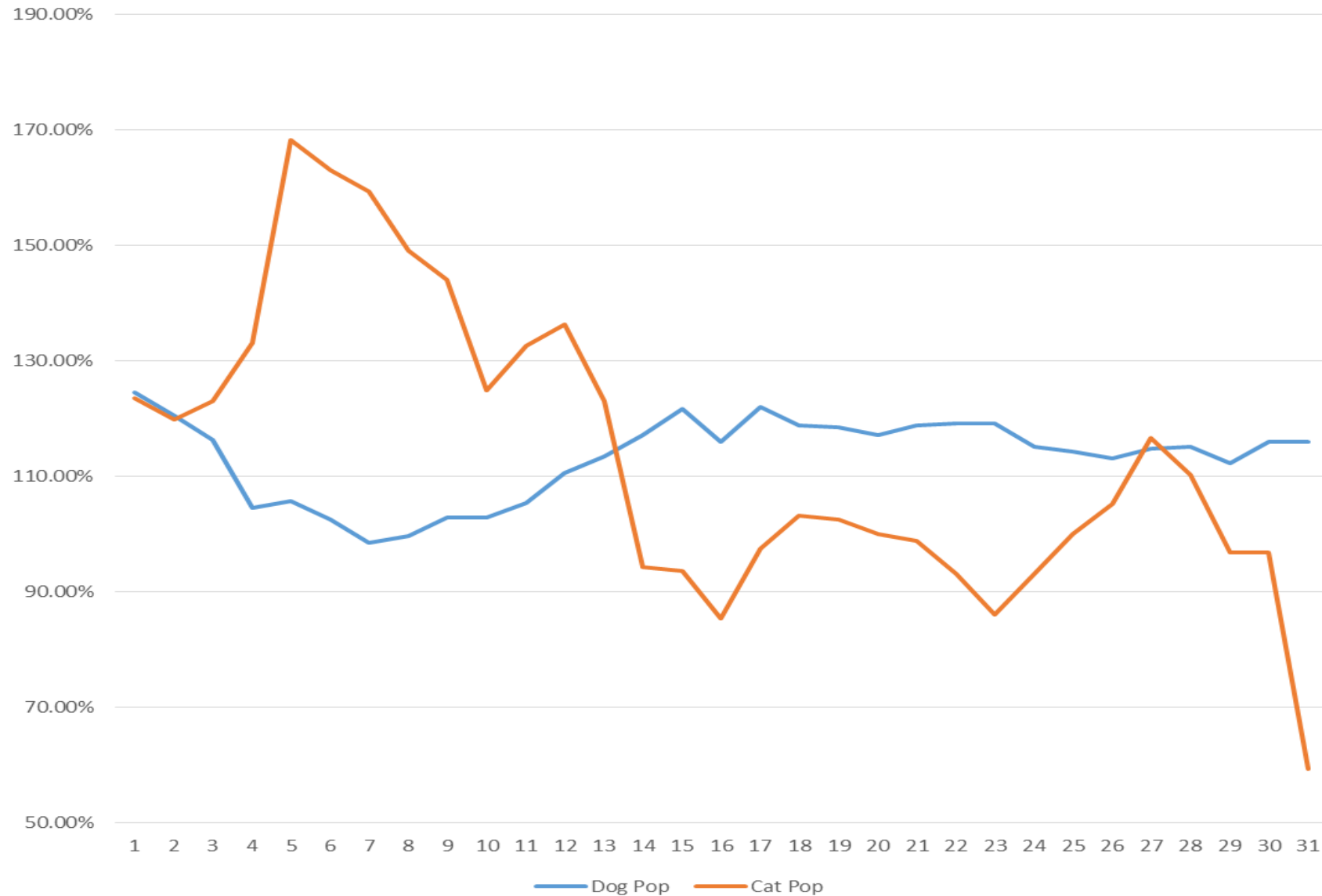


DATE	Dog Pop	Cat Pop	Shelter Pop
1	135.51%	125.48%	131.59%
2	141.22%	121.02%	133.33%
3	138.78%	122.93%	132.59%
4	138.78%	122.93%	132.59%
5	140.41%	129.30%	136.07%
6	135.51%	145.86%	139.55%
7	133.06%	147.77%	138.81%
8	131.84%	152.23%	139.80%
9	131.02%	154.14%	140.05%
10	127.76%	135.67%	130.85%
11	130.20%	142.04%	134.83%
12	124.49%	135.03%	128.61%
13	120.00%	129.30%	123.63%
14	119.59%	122.93%	120.90%
15	117.55%	131.85%	123.13%
16	115.92%	136.31%	123.88%
17	116.73%	117.20%	116.92%
18	120.00%	112.74%	117.16%
19	118.37%	111.46%	115.67%
20	116.73%	113.38%	115.42%
21	124.49%	124.84%	124.63%
22	128.98%	136.31%	131.84%
23	130.61%	144.59%	136.07%
24	130.61%	117.83%	125.62%
25	133.06%	117.20%	126.87%
26	133.88%	103.18%	121.89%
27	133.06%	115.29%	126.12%
28	129.39%	112.10%	122.64%
29	128.16%	122.29%	125.87%
30	124.49%	127.39%	125.62%

September 2018 PRC Shelter Population Trends

DATE	DOG POP	DOG KENNELS	POP/KENNELS	CAT POP	CAT CAGES	POP/KENNELS	TOTAL POP	TOTAL KENNEL	POP/KENNELS
1	332	245	135.51%	197	157	125.48%	529	402	131.59%
2	346	245	141.22%	190	157	121.02%	536	402	133.33%
3	340	245	138.78%	193	157	122.93%	533	402	132.59%
4	340	245	138.78%	193	157	122.93%	533	402	132.59%
5	344	245	140.41%	203	157	129.30%	547	402	136.07%
6	332	245	135.51%	229	157	145.86%	561	402	139.55%
7	326	245	133.06%	232	157	147.77%	558	402	138.81%
8	323	245	131.84%	239	157	152.23%	562	402	139.80%
9	321	245	131.02%	242	157	154.14%	563	402	140.05%
10	313	245	127.76%	213	157	135.67%	526	402	130.85%
11	319	245	130.20%	223	157	142.04%	542	402	134.83%
12	305	245	124.49%	212	157	135.03%	517	402	128.61%
13	294	245	120.00%	203	157	129.30%	497	402	123.63%
14	293	245	119.59%	193	157	122.93%	486	402	120.90%
15	288	245	117.55%	207	157	131.85%	495	402	123.13%
16	284	245	115.92%	214	157	136.31%	498	402	123.88%
17	286	245	116.73%	184	157	117.20%	470	402	116.92%
18	294	245	120.00%	177	157	112.74%	471	402	117.16%
19	290	245	118.37%	175	157	111.46%	465	402	115.67%
20	286	245	116.73%	178	157	113.38%	464	402	115.42%
21	305	245	124.49%	196	157	124.84%	501	402	124.63%
22	316	245	128.98%	214	157	136.31%	530	402	131.84%
23	320	245	130.61%	227	157	144.59%	547	402	136.07%
24	320	245	130.61%	185	157	117.83%	505	402	125.62%
25	326	245	133.06%	184	157	117.20%	510	402	126.87%
26	328	245	133.88%	162	157	103.18%	490	402	121.89%
27	326	245	133.06%	181	157	115.29%	507	402	126.12%
28	317	245	129.39%	176	157	112.10%	493	402	122.64%
29	314	245	128.16%	192	157	122.29%	506	402	125.87%
30	305	245	124.49%	200	157	127.39%	505	402	125.62%
* Dog Kennel Built Capacity includes Kennels AD, A, B, C, and D (E & F are excluded as medical treatment areas only)									
** Cat Cages Built Capacity includes all Lobby Cages plus holding cages in rooms I, J & K									

### October 2018 PRC Shelter Population Trends



DATE	Dog Pop	Cat Pop	Shelter Pop
1	124.49%	123.57%	124.13%
2	120.41%	119.75%	120.15%
3	116.33%	122.93%	118.91%
4	104.49%	133.12%	115.67%
5	105.71%	168.15%	130.10%
6	102.45%	163.06%	126.12%
7	98.37%	159.24%	122.14%
8	99.59%	149.04%	118.91%
9	102.86%	143.95%	118.91%
10	102.86%	124.84%	111.44%
11	105.31%	132.48%	115.92%
12	110.61%	136.31%	120.65%
13	113.47%	122.93%	117.16%
14	117.14%	94.27%	108.21%
15	121.63%	93.63%	110.70%
16	115.92%	85.35%	103.98%
17	122.04%	97.45%	112.44%
18	118.78%	103.18%	112.69%
19	118.37%	102.55%	112.19%
20	117.14%	100.00%	110.45%
21	118.78%	98.73%	110.95%
22	119.18%	92.99%	108.96%
23	119.18%	85.99%	106.22%
24	115.10%	92.99%	106.47%
25	114.29%	100.00%	108.71%
26	113.06%	105.10%	109.95%
27	114.69%	116.56%	115.42%
28	115.10%	110.19%	113.18%
29	112.24%	96.82%	106.22%
30	115.92%	96.82%	108.46%
31	115.92%	59.24%	93.78%

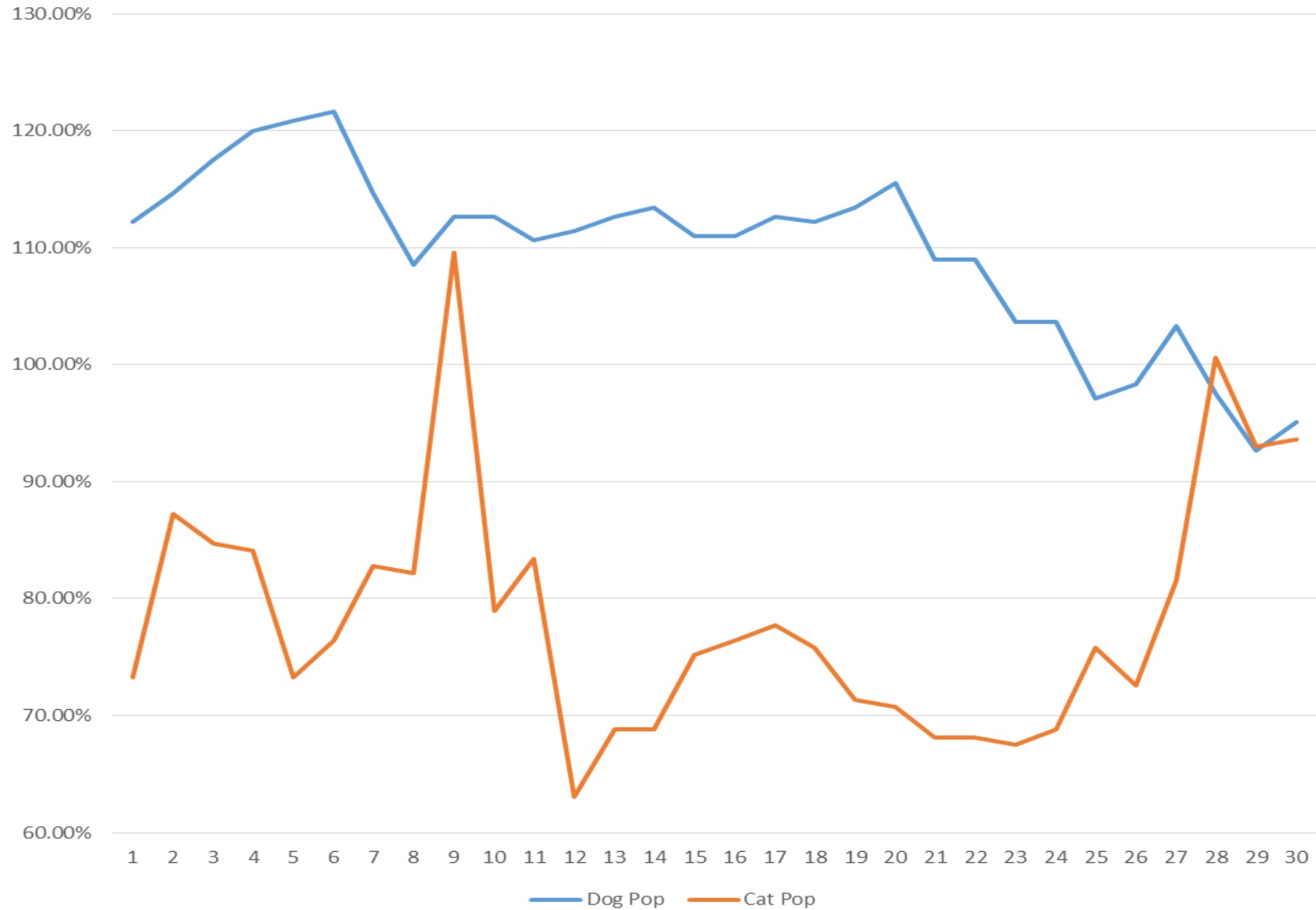
October 2018 PRC Shelter Population Trends

DATE	DOG POP	DOG KENNELS	POP/KENNELS	CAT POP	CAT CAGES	POP/KENNELS	TOTAL POP	TOTAL KENNEL	POP/KENNELS
1	305	245	124.49%	194	157	123.57%	499	402	124.13%
2	295	245	120.41%	188	157	119.75%	483	402	120.15%
3	285	245	116.33%	193	157	122.93%	478	402	118.91%
4	256	245	104.49%	209	157	133.12%	465	402	115.67%
5	259	245	105.71%	264	157	168.15%	523	402	130.10%
6	251	245	102.45%	256	157	163.06%	507	402	126.12%
7	241	245	98.37%	250	157	159.24%	491	402	122.14%
8	244	245	99.59%	234	157	149.04%	478	402	118.91%
9	252	245	102.86%	226	157	143.95%	478	402	118.91%
10	252	245	102.86%	196	157	124.84%	448	402	111.44%
11	258	245	105.31%	208	157	132.48%	466	402	115.92%
12	271	245	110.61%	214	157	136.31%	485	402	120.65%
13	278	245	113.47%	193	157	122.93%	471	402	117.16%
14	287	245	117.14%	148	157	94.27%	435	402	108.21%
15	298	245	121.63%	147	157	93.63%	445	402	110.70%
16	284	245	115.92%	134	157	85.35%	418	402	103.98%
17	299	245	122.04%	153	157	97.45%	452	402	112.44%
18	291	245	118.78%	162	157	103.18%	453	402	112.69%
19	290	245	118.37%	161	157	102.55%	451	402	112.19%
20	287	245	117.14%	157	157	100.00%	444	402	110.45%
21	291	245	118.78%	155	157	98.73%	446	402	110.95%
22	292	245	119.18%	146	157	92.99%	438	402	108.96%
23	292	245	119.18%	135	157	85.99%	427	402	106.22%
24	282	245	115.10%	146	157	92.99%	428	402	106.47%
25	280	245	114.29%	157	157	100.00%	437	402	108.71%
26	277	245	113.06%	165	157	105.10%	442	402	109.95%
27	281	245	114.69%	183	157	116.56%	464	402	115.42%
28	282	245	115.10%	173	157	110.19%	455	402	113.18%
29	275	245	112.24%	152	157	96.82%	427	402	106.22%
30	284	245	115.92%	152	157	96.82%	436	402	108.46%
31	284	245	115.92%	93	157	59.24%	377	402	93.78%

\* Dog Kennel Built Capacity includes Kennels AD, A, B, C, and D (E & F are excluded as medical treatment areas only)

\*\* Cat Cages Built Capacity includes all Lobby Cages plus holding cages in rooms I, J & K

November 2018 PRC Shelter Population Trends

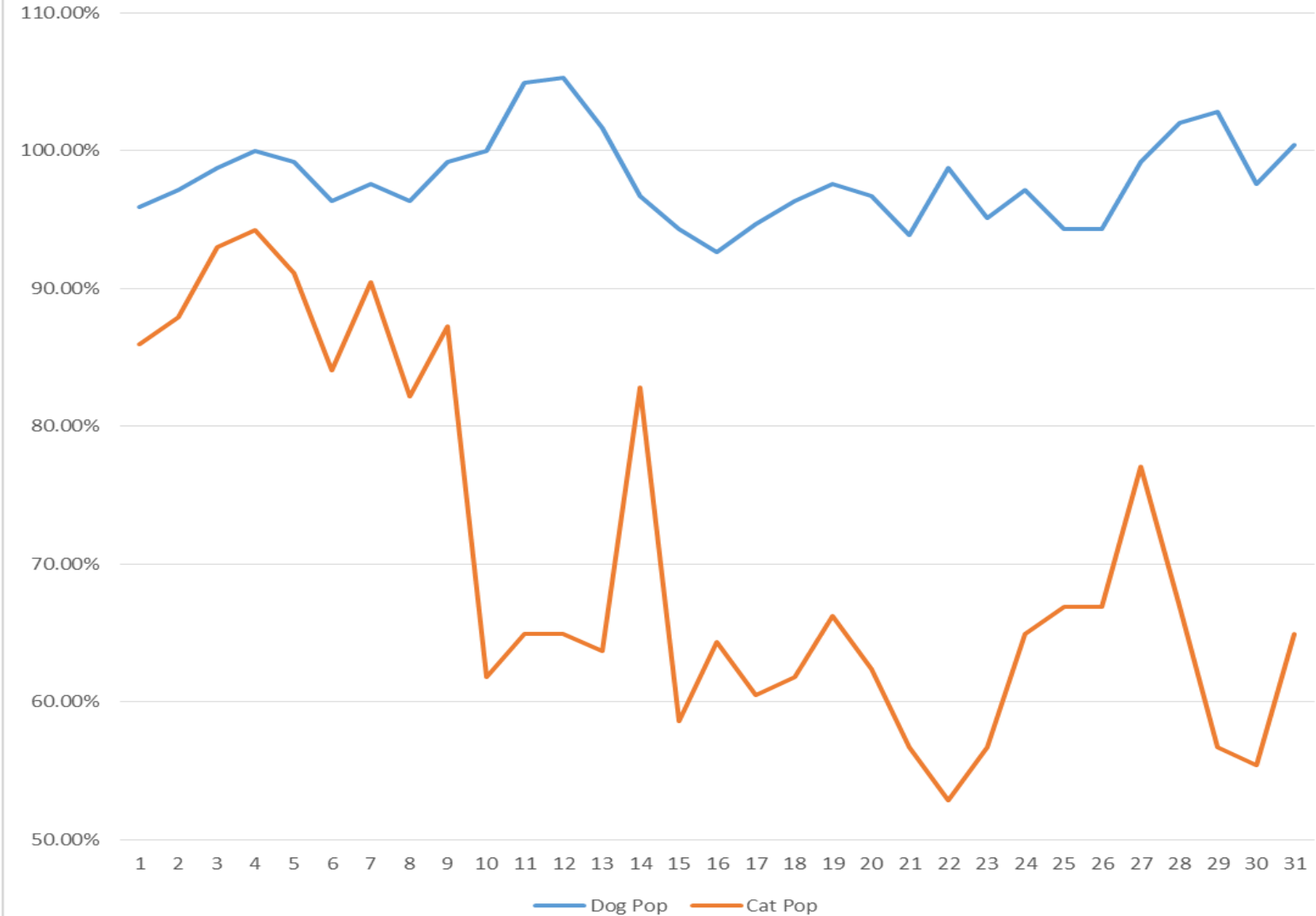


DATE	Dog Pop	Cat Pop	Shelter Pop
1	112.24%	73.25%	97.01%
2	114.69%	87.26%	103.98%
3	117.55%	84.71%	104.73%
4	120.00%	84.08%	105.97%
5	120.82%	73.25%	102.24%
6	121.63%	76.43%	103.98%
7	114.69%	82.80%	102.24%
8	108.57%	82.17%	98.26%
9	112.65%	109.55%	111.44%
10	112.65%	78.98%	99.50%
11	110.61%	83.44%	100.00%
12	111.43%	63.06%	92.54%
13	112.65%	68.79%	95.52%
14	113.47%	68.79%	96.02%
15	111.02%	75.16%	97.01%
16	111.02%	76.43%	97.51%
17	112.65%	77.71%	99.00%
18	112.24%	75.80%	98.01%
19	113.47%	71.34%	97.01%
20	115.51%	70.70%	98.01%
21	108.98%	68.15%	93.03%
22	108.98%	68.15%	93.03%
23	103.67%	67.52%	89.55%
24	103.67%	68.79%	90.05%
25	97.14%	75.80%	88.81%
26	98.37%	72.61%	88.31%
27	103.27%	81.53%	94.78%
28	97.55%	100.64%	98.76%
29	92.65%	92.99%	92.79%
30	95.10%	93.63%	94.53%

November 2018 PRC Shelter Population Trends

DATE	DOG POP	DOG KENNELS	POP/KENNELS	CAT POP	CAT CAGES	POP/KENNELS	TOTAL POP	TOTAL KENNEL	POP/KENNELS
1	275	245	112.24%	115	157	73.25%	390	402	97.01%
2	281	245	114.69%	137	157	87.26%	418	402	103.98%
3	288	245	117.55%	133	157	84.71%	421	402	104.73%
4	294	245	120.00%	132	157	84.08%	426	402	105.97%
5	296	245	120.82%	115	157	73.25%	411	402	102.24%
6	298	245	121.63%	120	157	76.43%	418	402	103.98%
7	281	245	114.69%	130	157	82.80%	411	402	102.24%
8	266	245	108.57%	129	157	82.17%	395	402	98.26%
9	276	245	112.65%	172	157	109.55%	448	402	111.44%
10	276	245	112.65%	124	157	78.98%	400	402	99.50%
11	271	245	110.61%	131	157	83.44%	402	402	100.00%
12	273	245	111.43%	99	157	63.06%	372	402	92.54%
13	276	245	112.65%	108	157	68.79%	384	402	95.52%
14	278	245	113.47%	108	157	68.79%	386	402	96.02%
15	272	245	111.02%	118	157	75.16%	390	402	97.01%
16	272	245	111.02%	120	157	76.43%	392	402	97.51%
17	276	245	112.65%	122	157	77.71%	398	402	99.00%
18	275	245	112.24%	119	157	75.80%	394	402	98.01%
19	278	245	113.47%	112	157	71.34%	390	402	97.01%
20	283	245	115.51%	111	157	70.70%	394	402	98.01%
21	267	245	108.98%	107	157	68.15%	374	402	93.03%
22	267	245	108.98%	107	157	68.15%	374	402	93.03%
23	254	245	103.67%	106	157	67.52%	360	402	89.55%
24	254	245	103.67%	108	157	68.79%	362	402	90.05%
25	238	245	97.14%	119	157	75.80%	357	402	88.81%
26	241	245	98.37%	114	157	72.61%	355	402	88.31%
27	253	245	103.27%	128	157	81.53%	381	402	94.78%
28	239	245	97.55%	158	157	100.64%	397	402	98.76%
29	227	245	92.65%	146	157	92.99%	373	402	92.79%
30	233	245	95.10%	147	157	93.63%	380	402	94.53%
*	Dog Kennel Built Capacity includes Kennels AD, A, B, C, and D (E & F are excluded as medical treatment areas only)								
**	Cat Cages Built Capacity includes all Lobby Cages plus holding cages in rooms I, J & K								

December 2018 PRC Shleter Population Trends



DATE	Dog Pop	Cat Pop	Shelter Pop
1	95.92%	85.99%	92.04%
2	97.14%	87.90%	93.53%
3	98.78%	92.99%	96.52%
4	100.00%	94.27%	97.76%
5	99.18%	91.08%	96.02%
6	96.33%	84.08%	91.54%
7	97.55%	90.45%	94.78%
8	96.33%	82.17%	90.80%
9	99.18%	87.26%	94.53%
10	100.00%	61.78%	85.07%
11	104.90%	64.97%	89.30%
12	105.31%	64.97%	89.55%
13	101.63%	63.69%	86.82%
14	96.73%	82.80%	91.29%
15	94.29%	58.60%	80.35%
16	92.65%	64.33%	81.59%
17	94.69%	60.51%	81.34%
18	96.33%	61.78%	82.84%
19	97.55%	66.24%	85.32%
20	96.73%	62.42%	83.33%
21	93.88%	56.69%	79.35%
22	98.78%	52.87%	80.85%
23	95.10%	56.69%	80.10%
24	97.14%	64.97%	84.58%
25	94.29%	66.88%	83.58%
26	94.29%	66.88%	83.58%
27	99.18%	77.07%	90.55%
28	102.04%	66.88%	88.31%
29	102.86%	56.69%	84.83%
30	97.55%	55.41%	81.09%
31	100.41%	64.97%	86.57%

December 2018 PRC Shelter Population Trends

DATE	DOG POP	DOG KENNELS	POP/KENNELS	CAT POP	CAT CAGES	POP/KENNELS	TOTAL POP	TOTAL KENNEL	POP/KENNELS
1	235	245	95.92%	135	157	85.99%	370	402	92.04%
2	238	245	97.14%	138	157	87.90%	376	402	93.53%
3	242	245	98.78%	146	157	92.99%	388	402	96.52%
4	245	245	100.00%	148	157	94.27%	393	402	97.76%
5	243	245	99.18%	143	157	91.08%	386	402	96.02%
6	236	245	96.33%	132	157	84.08%	368	402	91.54%
7	239	245	97.55%	142	157	90.45%	381	402	94.78%
8	236	245	96.33%	129	157	82.17%	365	402	90.80%
9	243	245	99.18%	137	157	87.26%	380	402	94.53%
10	245	245	100.00%	97	157	61.78%	342	402	85.07%
11	257	245	104.90%	102	157	64.97%	359	402	89.30%
12	258	245	105.31%	102	157	64.97%	360	402	89.55%
13	249	245	101.63%	100	157	63.69%	349	402	86.82%
14	237	245	96.73%	130	157	82.80%	367	402	91.29%
15	231	245	94.29%	92	157	58.60%	323	402	80.35%
16	227	245	92.65%	101	157	64.33%	328	402	81.59%
17	232	245	94.69%	95	157	60.51%	327	402	81.34%
18	236	245	96.33%	97	157	61.78%	333	402	82.84%
19	239	245	97.55%	104	157	66.24%	343	402	85.32%
20	237	245	96.73%	98	157	62.42%	335	402	83.33%
21	230	245	93.88%	89	157	56.69%	319	402	79.35%
22	242	245	98.78%	83	157	52.87%	325	402	80.85%
23	233	245	95.10%	89	157	56.69%	322	402	80.10%
24	238	245	97.14%	102	157	64.97%	340	402	84.58%
25	231	245	94.29%	105	157	66.88%	336	402	83.58%
26	231	245	94.29%	105	157	66.88%	336	402	83.58%
27	243	245	99.18%	121	157	77.07%	364	402	90.55%
28	250	245	102.04%	105	157	66.88%	355	402	88.31%
29	252	245	102.86%	89	157	56.69%	341	402	84.83%
30	239	245	97.55%	87	157	55.41%	326	402	81.09%
31	246	245	100.41%	102	157	64.97%	348	402	86.57%
*	Dog Kennel Built Capacity includes Kennels AD, A, B, C, and D (E & F are excluded as medical treatment areas only)								
**	Cat Cages Built Capacity includes all Lobby Cages plus holding cages in rooms I, J & K								



2018 Annual PRC Shelter Population Trends

