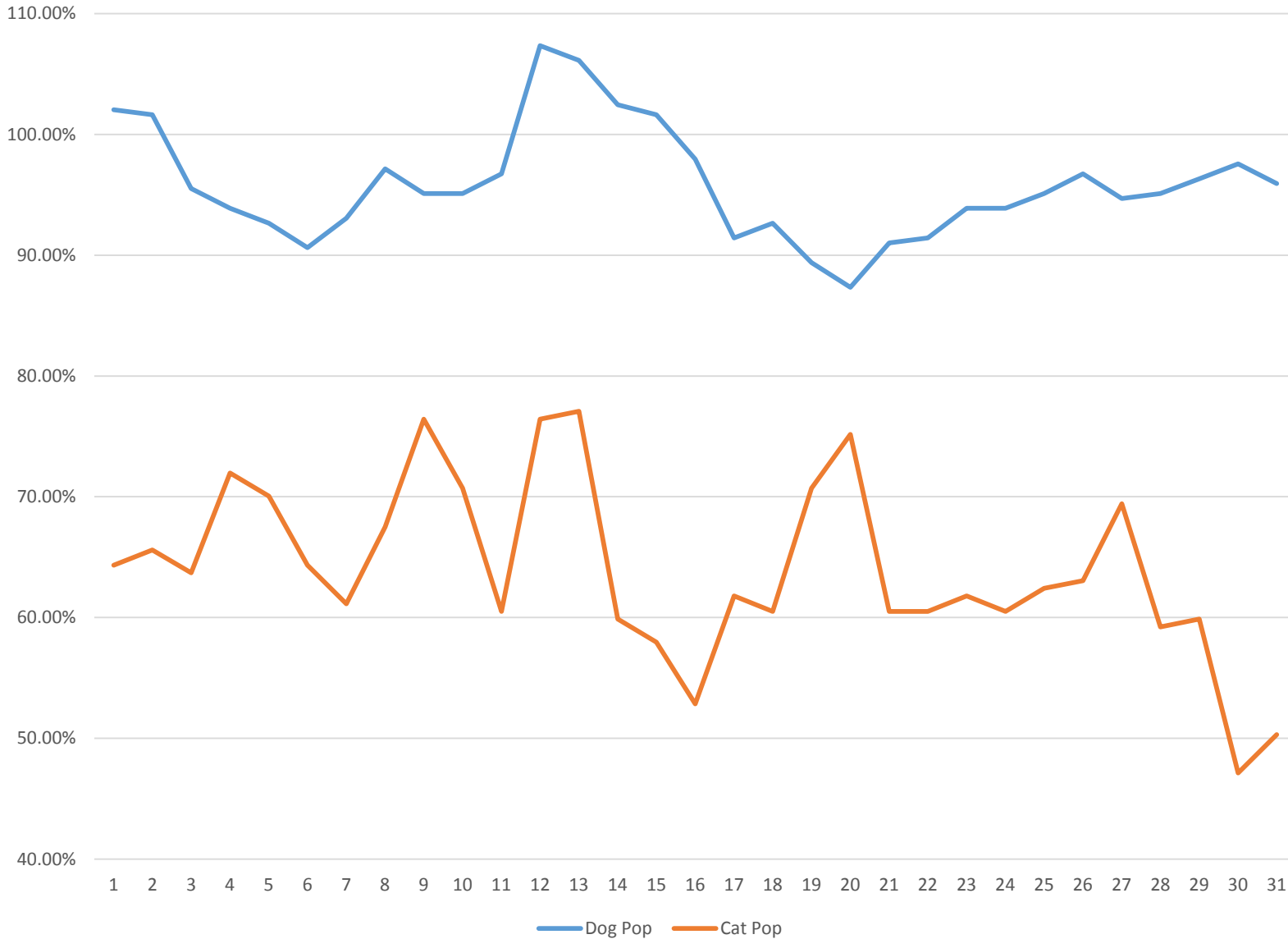


January 2019 Shelter Population Trends

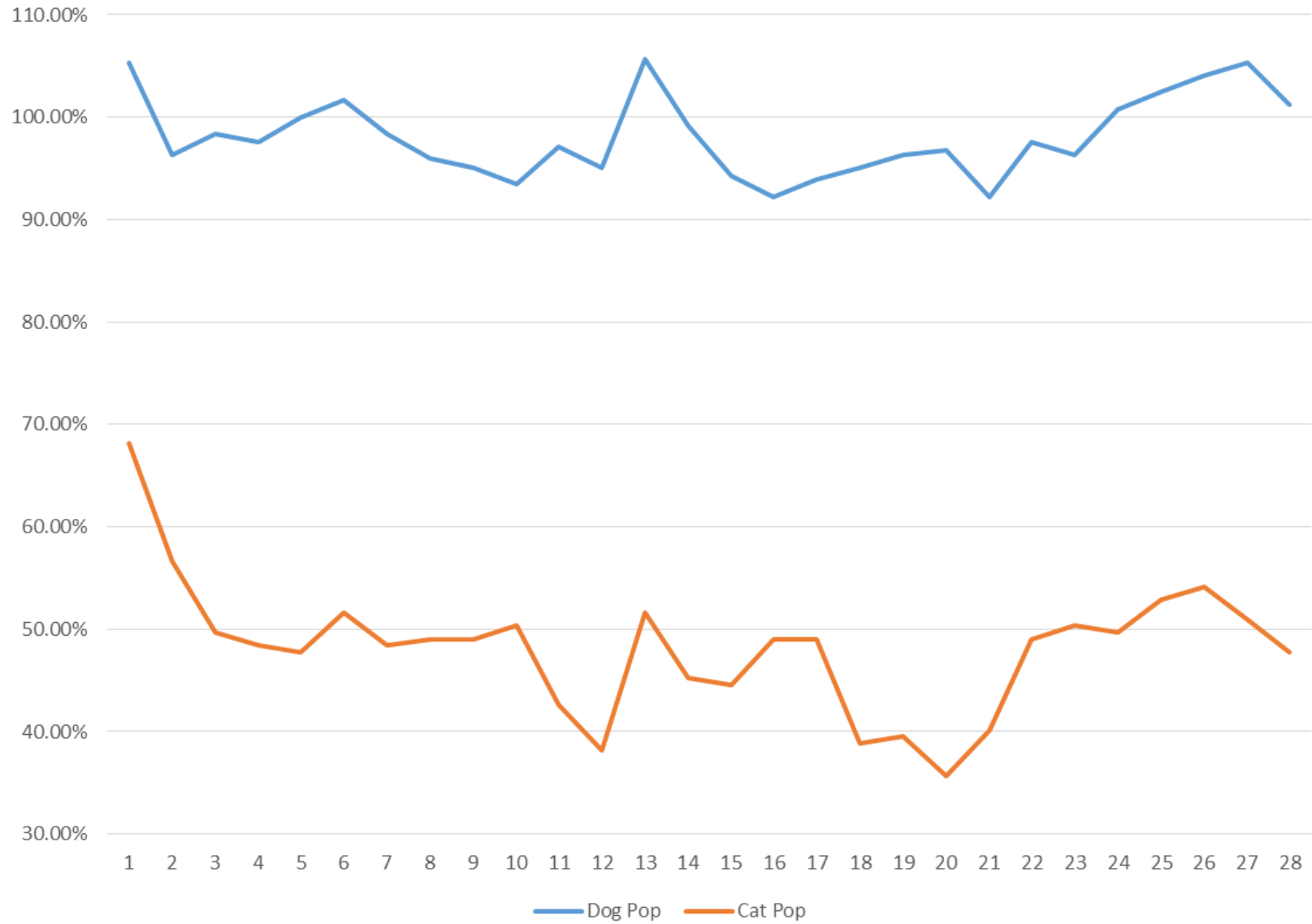


DATE	Dog Pop	Cat Pop	Shelter Pop
1	102.04%	64.33%	87.31%
2	101.63%	65.61%	87.56%
3	95.51%	63.69%	83.08%
4	93.88%	71.97%	85.32%
5	92.65%	70.06%	83.83%
6	90.61%	64.33%	80.35%
7	93.06%	61.15%	80.60%
8	97.14%	67.52%	85.57%
9	95.10%	76.43%	87.81%
10	95.10%	70.70%	85.57%
11	96.73%	60.51%	82.59%
12	107.35%	76.43%	95.27%
13	106.12%	77.07%	94.78%
14	102.45%	59.87%	85.82%
15	101.63%	57.96%	84.58%
16	97.96%	52.87%	80.35%
17	91.43%	61.78%	79.85%
18	92.65%	60.51%	80.10%
19	89.39%	70.70%	82.09%
20	87.35%	75.16%	82.59%
21	91.02%	60.51%	79.10%
22	91.43%	60.51%	79.35%
23	93.88%	61.78%	81.34%
24	93.88%	60.51%	80.85%
25	95.10%	62.42%	82.34%
26	96.73%	63.06%	83.58%
27	94.69%	69.43%	84.83%
28	95.10%	59.24%	81.09%
29	96.33%	59.87%	82.09%
30	97.55%	47.13%	77.86%
31	95.92%	50.32%	78.11%

January 2019 PRC Shelter Population Trends

DATE	DOG POP	DOG KENNELS	POP/KENNELS	CAT POP	CAT CAGES	POP/KENNELS	TOTAL POP	TOTAL KENNEL	POP/KENNELS
1	250	245	102.04%	101	157	64.33%	351	402	87.31%
2	249	245	101.63%	103	157	65.61%	352	402	87.56%
3	234	245	95.51%	100	157	63.69%	334	402	83.08%
4	230	245	93.88%	113	157	71.97%	343	402	85.32%
5	227	245	92.65%	110	157	70.06%	337	402	83.83%
6	222	245	90.61%	101	157	64.33%	323	402	80.35%
7	228	245	93.06%	96	157	61.15%	324	402	80.60%
8	238	245	97.14%	106	157	67.52%	344	402	85.57%
9	233	245	95.10%	120	157	76.43%	353	402	87.81%
10	233	245	95.10%	111	157	70.70%	344	402	85.57%
11	237	245	96.73%	95	157	60.51%	332	402	82.59%
12	263	245	107.35%	120	157	76.43%	383	402	95.27%
13	260	245	106.12%	121	157	77.07%	381	402	94.78%
14	251	245	102.45%	94	157	59.87%	345	402	85.82%
15	249	245	101.63%	91	157	57.96%	340	402	84.58%
16	240	245	97.96%	83	157	52.87%	323	402	80.35%
17	224	245	91.43%	97	157	61.78%	321	402	79.85%
18	227	245	92.65%	95	157	60.51%	322	402	80.10%
19	219	245	89.39%	111	157	70.70%	330	402	82.09%
20	214	245	87.35%	118	157	75.16%	332	402	82.59%
21	223	245	91.02%	95	157	60.51%	318	402	79.10%
22	224	245	91.43%	95	157	60.51%	319	402	79.35%
23	230	245	93.88%	97	157	61.78%	327	402	81.34%
24	230	245	93.88%	95	157	60.51%	325	402	80.85%
25	233	245	95.10%	98	157	62.42%	331	402	82.34%
26	237	245	96.73%	99	157	63.06%	336	402	83.58%
27	232	245	94.69%	109	157	69.43%	341	402	84.83%
28	233	245	95.10%	93	157	59.24%	326	402	81.09%
29	236	245	96.33%	94	157	59.87%	330	402	82.09%
30	239	245	97.55%	74	157	47.13%	313	402	77.86%
31	235	245	95.92%	79	157	50.32%	314	402	78.11%
*	Dog Kennel Built Capacity includes Kennels AD, A, B, C, and D (E & F are excluded as medical treatment areas only)								
**	Cat Cages Built Capacity includes all Lobby Cages plus holding cages in rooms I, J & K								

February 2019 Shelter Population Trends



DATE	Dog Pop	Cat Pop	Shelter Pop
1	105.31%	68.15%	90.80%
2	96.33%	56.69%	80.85%
3	98.37%	49.68%	79.35%
4	97.55%	48.41%	78.36%
5	100.00%	47.77%	79.60%
6	101.63%	51.59%	82.09%
7	98.37%	48.41%	78.86%
8	95.92%	49.04%	77.61%
9	95.10%	49.04%	77.11%
10	93.47%	50.32%	76.62%
11	97.14%	42.68%	75.87%
12	95.10%	38.22%	72.89%
13	105.71%	51.59%	84.58%
14	99.18%	45.22%	78.11%
15	94.29%	44.59%	74.88%
16	92.24%	49.04%	75.37%
17	93.88%	49.04%	76.37%
18	95.10%	38.85%	73.13%
19	96.33%	39.49%	74.13%
20	93.88%	49.04%	76.37%
21	97.55%	49.04%	78.61%
22	96.33%	50.32%	78.36%
23	100.82%	49.68%	80.85%
24	102.45%	52.87%	83.08%
25	104.08%	54.14%	84.58%
26	105.31%	50.96%	84.08%
27	101.22%	47.77%	80.35%
28			

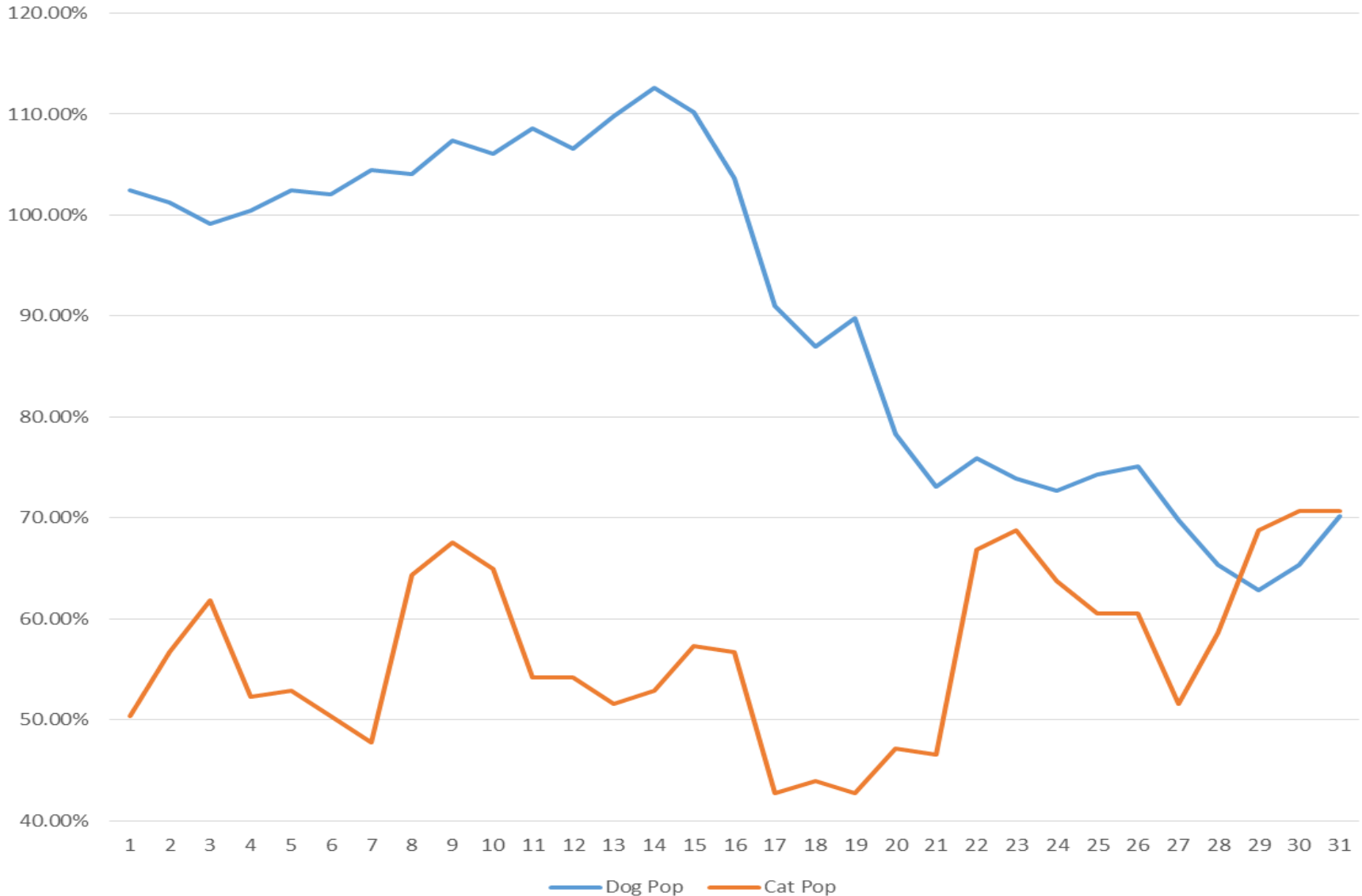
February 2019 PRC Shelter Population Trends

DATE	DOG POP	DOG KENNELS	POP/KENNELS	CAT POP	CAT CAGES	POP/KENNELS	TOTAL POP	TOTAL KENNEL	POP/KENNELS
1	258	245	105.31%	107	157	68.15%	365	402	90.80%
2	236	245	96.33%	89	157	56.69%	325	402	80.85%
3	241	245	98.37%	78	157	49.68%	319	402	79.35%
4	239	245	97.55%	76	157	48.41%	315	402	78.36%
5	245	245	100.00%	75	157	47.77%	320	402	79.60%
6	249	245	101.63%	81	157	51.59%	330	402	82.09%
7	241	245	98.37%	76	157	48.41%	317	402	78.86%
8	235	245	95.92%	77	157	49.04%	312	402	77.61%
9	233	245	95.10%	77	157	49.04%	310	402	77.11%
10	229	245	93.47%	79	157	50.32%	308	402	76.62%
11	238	245	97.14%	67	157	42.68%	305	402	75.87%
12	233	245	95.10%	60	157	38.22%	293	402	72.89%
13	259	245	105.71%	81	157	51.59%	340	402	84.58%
14	243	245	99.18%	71	157	45.22%	314	402	78.11%
15	231	245	94.29%	70	157	44.59%	301	402	74.88%
16	226	245	92.24%	77	157	49.04%	303	402	75.37%
17	230	245	93.88%	77	157	49.04%	307	402	76.37%
18	233	245	95.10%	61	157	38.85%	294	402	73.13%
19	236	245	96.33%	62	157	39.49%	298	402	74.13%
20	237	245	96.73%	56	157	35.67%	293	402	72.89%
21	226	245	92.24%	63	157	40.13%	289	402	71.89%
22	239	245	97.55%	77	157	49.04%	316	402	78.61%
23	236	245	96.33%	79	157	50.32%	315	402	78.36%
24	247	245	100.82%	78	157	49.68%	325	402	80.85%
25	251	245	102.45%	83	157	52.87%	334	402	83.08%
26	255	245	104.08%	85	157	54.14%	340	402	84.58%
27	258	245	105.31%	80	157	50.96%	338	402	84.08%
28	248	245	101.22%	75	157	47.77%	323	402	80.35%

\* Dog Kennel Built Capacity includes Kennels AD, A, B, C, and D (E & F are excluded as medical treatment areas only)

\*\* Cat Cages Built Capacity includes all Lobby Cages plus holding cages in rooms I, J & K

### March 2019 Shelter Population Trends



DATE	Dog Pop	Cat Pop	Shelter Pop
1	102.45%	50.32%	82.09%
2	101.22%	56.69%	83.83%
3	99.18%	61.78%	84.58%
4	100.41%	52.23%	81.59%
5	102.45%	52.87%	83.08%
6	102.04%	50.32%	81.84%
7	104.49%	47.77%	82.34%
8	104.08%	64.33%	88.56%
9	107.35%	67.52%	91.79%
10	106.12%	64.97%	90.05%
11	108.57%	54.14%	87.31%
12	106.53%	54.14%	86.07%
13	109.80%	51.59%	87.06%
14	112.65%	52.87%	89.30%
15	110.20%	57.32%	89.55%
16	103.67%	56.69%	85.32%
17	91.02%	42.68%	72.14%
18	86.94%	43.95%	70.15%
19	89.80%	42.68%	71.39%
20	78.37%	47.13%	66.17%
21	73.06%	46.50%	62.69%
22	75.92%	66.88%	72.39%
23	73.88%	68.79%	71.89%
24	72.65%	63.69%	69.15%
25	74.29%	60.51%	68.91%
26	75.10%	60.51%	69.40%
27	69.80%	51.59%	62.69%
28	65.31%	58.60%	62.69%
29	62.86%	68.79%	65.17%
30	65.31%	70.70%	67.41%
31	70.20%	70.70%	70.40%

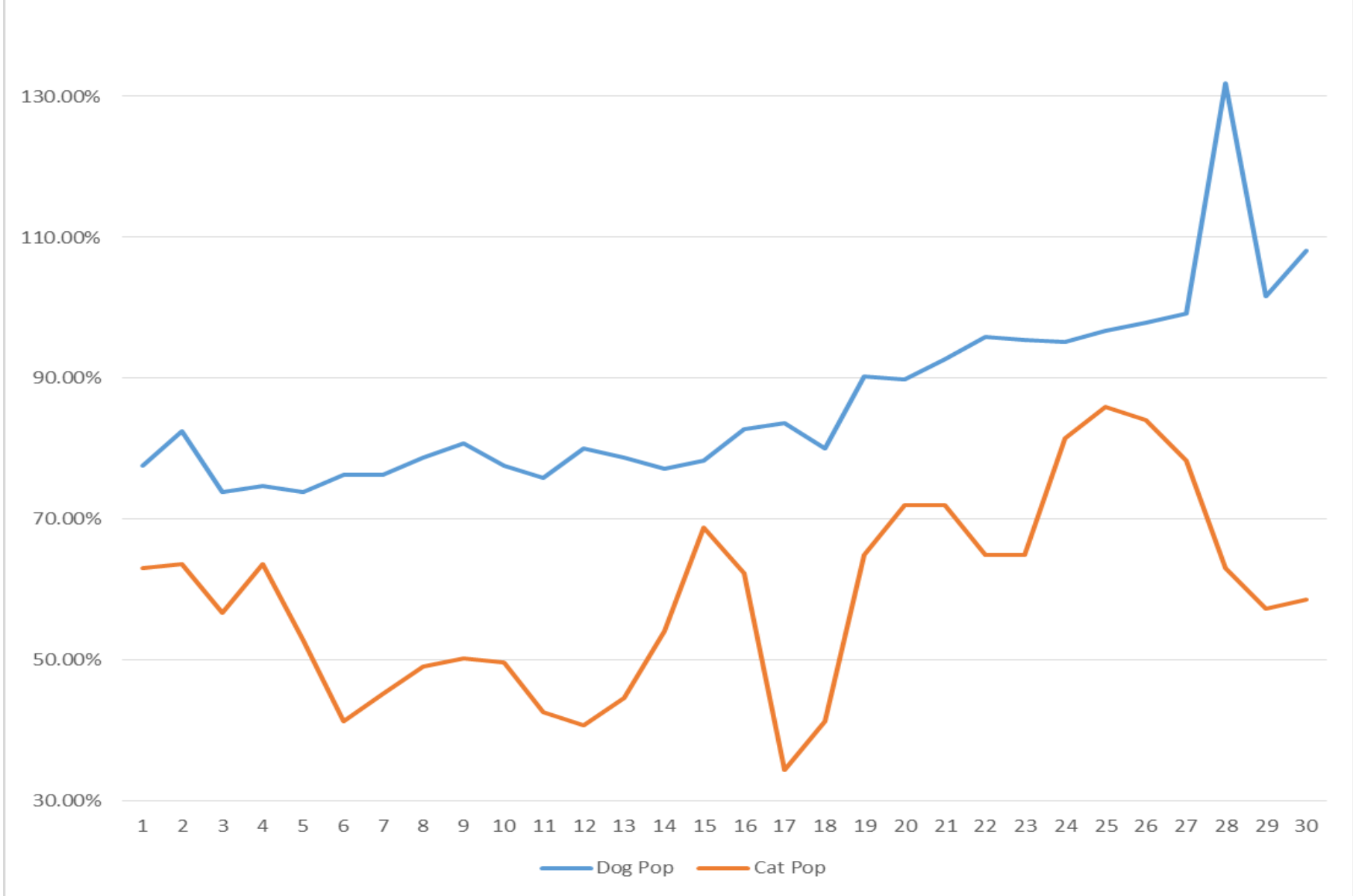
March 2019 PRC Shelter Population Trends

DATE	DOG POP	DOG KENNELS	POP/KENNELS	CAT POP	CAT CAGES	POP/KENNELS	TOTAL POP	TOTAL KENNEL	POP/KENNELS
1	251	245	102.45%	79	157	50.32%	330	402	82.09%
2	248	245	101.22%	89	157	56.69%	337	402	83.83%
3	243	245	99.18%	97	157	61.78%	340	402	84.58%
4	246	245	100.41%	82	157	52.23%	328	402	81.59%
5	251	245	102.45%	83	157	52.87%	334	402	83.08%
6	250	245	102.04%	79	157	50.32%	329	402	81.84%
7	256	245	104.49%	75	157	47.77%	331	402	82.34%
8	255	245	104.08%	101	157	64.33%	356	402	88.56%
9	263	245	107.35%	106	157	67.52%	369	402	91.79%
10	260	245	106.12%	102	157	64.97%	362	402	90.05%
11	266	245	108.57%	85	157	54.14%	351	402	87.31%
12	261	245	106.53%	85	157	54.14%	346	402	86.07%
13	269	245	109.80%	81	157	51.59%	350	402	87.06%
14	276	245	112.65%	83	157	52.87%	359	402	89.30%
15	270	245	110.20%	90	157	57.32%	360	402	89.55%
16	254	245	103.67%	89	157	56.69%	343	402	85.32%
17	223	245	91.02%	67	157	42.68%	290	402	72.14%
18	213	245	86.94%	69	157	43.95%	282	402	70.15%
19	220	245	89.80%	67	157	42.68%	287	402	71.39%
20	192	245	78.37%	74	157	47.13%	266	402	66.17%
21	179	245	73.06%	73	157	46.50%	252	402	62.69%
22	186	245	75.92%	105	157	66.88%	291	402	72.39%
23	181	245	73.88%	108	157	68.79%	289	402	71.89%
24	178	245	72.65%	100	157	63.69%	278	402	69.15%
25	182	245	74.29%	95	157	60.51%	277	402	68.91%
26	184	245	75.10%	95	157	60.51%	279	402	69.40%
27	171	245	69.80%	81	157	51.59%	252	402	62.69%
28	160	245	65.31%	92	157	58.60%	252	402	62.69%
29	154	245	62.86%	108	157	68.79%	262	402	65.17%
30	160	245	65.31%	111	157	70.70%	271	402	67.41%
31	172	245	70.20%	111	157	70.70%	283	402	70.40%

\* Dog Kennel Built Capacity includes Kennels AD, A, B, C, and D (E & F are excluded as medical treatment areas only)

\*\* Cat Cages Built Capacity includes all Lobby Cages plus holding cages in rooms I, J & K

### April 2019 Shelter Population Trends



DATE	Dog Pop	Cat Pop	Shelter Pop
1	77.55%	63.06%	71.89%
2	82.45%	63.69%	75.12%
3	73.88%	56.69%	67.16%
4	74.69%	63.69%	70.40%
5	73.88%	52.87%	65.67%
6	76.33%	41.40%	62.69%
7	76.33%	45.22%	64.18%
8	78.78%	49.04%	67.16%
9	80.82%	50.32%	68.91%
10	77.55%	49.68%	66.67%
11	75.92%	42.68%	62.94%
12	80.00%	40.76%	64.68%
13	78.78%	44.59%	65.42%
14	77.14%	54.14%	68.16%
15	78.37%	68.79%	74.63%
16	82.86%	62.42%	74.88%
17	83.67%	34.39%	64.43%
18	80.00%	41.40%	64.93%
19	90.20%	64.97%	80.35%
20	89.80%	71.97%	82.84%
21	92.65%	71.97%	84.58%
22	95.92%	64.97%	83.83%
23	95.51%	64.97%	83.58%
24	95.10%	81.53%	89.80%
25	96.73%	85.99%	92.54%
26	97.96%	84.08%	92.54%
27	99.18%	78.34%	91.04%
28	131.84%	63.06%	104.98%
29	101.63%	57.32%	84.33%
30	108.16%	58.60%	88.81%

April 2019 PRC Shelter Population Trends

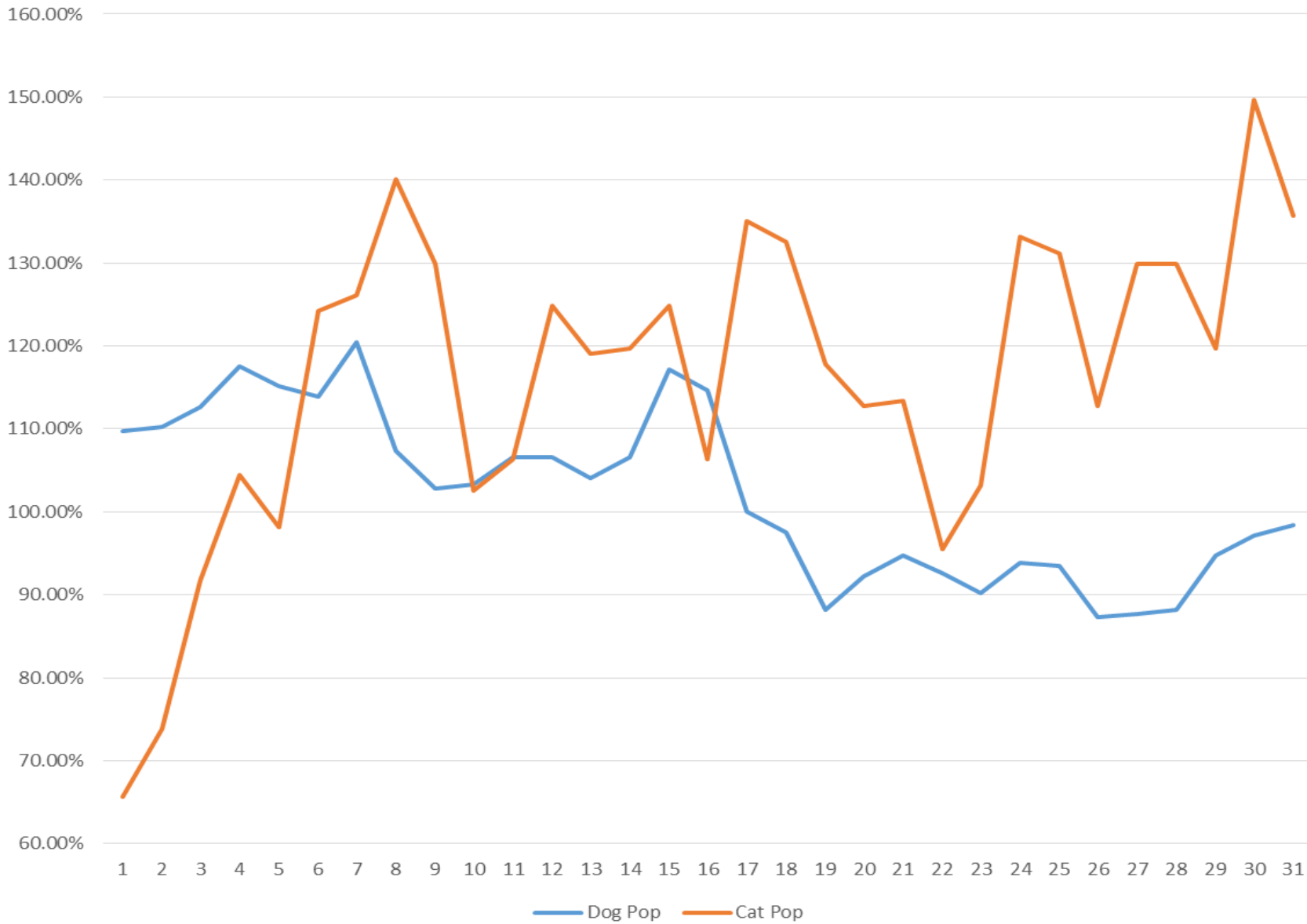
DATE	DOG POP	DOG KENNELS	POP/KENNELS	CAT POP	CAT CAGES	POP/KENNELS	TOTAL POP	TOTAL KENNEL	POP/KENNELS
1	190	245	77.55%	99	157	63.06%	289	402	71.89%
2	202	245	82.45%	100	157	63.69%	302	402	75.12%
3	181	245	73.88%	89	157	56.69%	270	402	67.16%
4	183	245	74.69%	100	157	63.69%	283	402	70.40%
5	181	245	73.88%	83	157	52.87%	264	402	65.67%
6	187	245	76.33%	65	157	41.40%	252	402	62.69%
7	187	245	76.33%	71	157	45.22%	258	402	64.18%
8	193	245	78.78%	77	157	49.04%	270	402	67.16%
9	198	245	80.82%	79	157	50.32%	277	402	68.91%
10	190	245	77.55%	78	157	49.68%	268	402	66.67%
11	186	245	75.92%	67	157	42.68%	253	402	62.94%
12	196	245	80.00%	64	157	40.76%	260	402	64.68%
13	193	245	78.78%	70	157	44.59%	263	402	65.42%
14	189	245	77.14%	85	157	54.14%	274	402	68.16%
15	192	245	78.37%	108	157	68.79%	300	402	74.63%
16	203	245	82.86%	98	157	62.42%	301	402	74.88%
17	205	245	83.67%	54	157	34.39%	259	402	64.43%
18	196	245	80.00%	65	157	41.40%	261	402	64.93%
19	221	245	90.20%	102	157	64.97%	323	402	80.35%
20	220	245	89.80%	113	157	71.97%	333	402	82.84%
21	227	245	92.65%	113	157	71.97%	340	402	84.58%
22	235	245	95.92%	102	157	64.97%	337	402	83.83%
23	234	245	95.51%	102	157	64.97%	336	402	83.58%
24	233	245	95.10%	128	157	81.53%	361	402	89.80%
25	237	245	96.73%	135	157	85.99%	372	402	92.54%
26	240	245	97.96%	132	157	84.08%	372	402	92.54%
27	243	245	99.18%	123	157	78.34%	366	402	91.04%
28	323	245	131.84%	99	157	63.06%	422	402	104.98%
29	249	245	101.63%	90	157	57.32%	339	402	84.33%
30	265	245	108.16%	92	157	58.60%	357	402	88.81%

\* Dog Kennel Built Capacity includes Kennels AD, A, B, C, and D (E & F are excluded as medical treatment areas only)

\*\* Cat Cages Built Capacity includes all Lobby Cages plus holding cages in rooms I, J & K



May 2019 Shelter Population Trend



DATE	Dog Pop	Cat Pop	Shelter Pop
1	109.80%	65.61%	92.54%
2	110.20%	73.89%	96.02%
3	112.65%	91.72%	104.48%
4	117.55%	104.46%	112.44%
5	115.10%	98.09%	108.46%
6	113.88%	124.20%	117.91%
7	120.41%	126.11%	122.64%
8	107.35%	140.13%	120.15%
9	102.86%	129.94%	113.43%
10	103.27%	102.55%	102.99%
11	106.53%	106.37%	106.47%
12	106.53%	124.84%	113.68%
13	104.08%	119.11%	109.95%
14	106.53%	119.75%	111.69%
15	117.14%	124.84%	120.15%
16	114.69%	106.37%	111.44%
17	100.00%	135.03%	113.68%
18	97.55%	132.48%	111.19%
19	88.16%	117.83%	99.75%
20	92.24%	112.74%	100.25%
21	94.69%	113.38%	101.99%
22	92.65%	95.54%	93.78%
23	90.20%	103.18%	95.27%
24	93.88%	133.12%	109.20%
25	93.47%	131.21%	108.21%
26	87.35%	112.74%	97.26%
27	87.76%	129.94%	104.23%
28	88.16%	129.94%	104.48%
29	94.69%	119.75%	104.48%
30	97.14%	149.68%	117.66%
31	98.37%	135.67%	112.94%

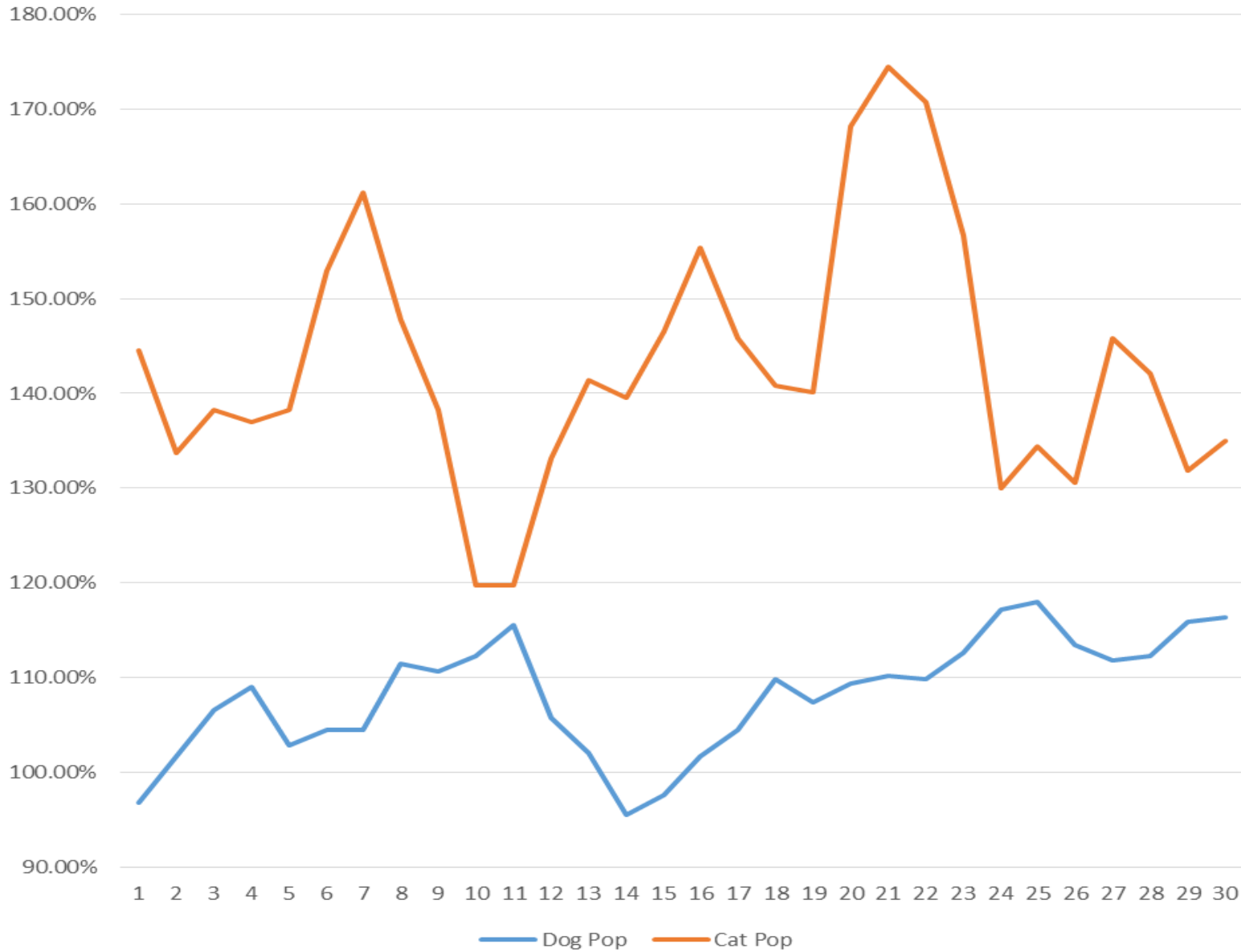
May 2019 PRC Shelter Population Trends

DATE	DOG POP	DOG KENNELS	POP/KENNELS	CAT POP	CAT CAGES	POP/KENNELS	TOTAL POP	TOTAL KENNEL	POP/KENNELS
1	269	245	109.80%	103	157	65.61%	372	402	92.54%
2	270	245	110.20%	116	157	73.89%	386	402	96.02%
3	276	245	112.65%	144	157	91.72%	420	402	104.48%
4	288	245	117.55%	164	157	104.46%	452	402	112.44%
5	282	245	115.10%	154	157	98.09%	436	402	108.46%
6	279	245	113.88%	195	157	124.20%	474	402	117.91%
7	295	245	120.41%	198	157	126.11%	493	402	122.64%
8	263	245	107.35%	220	157	140.13%	483	402	120.15%
9	252	245	102.86%	204	157	129.94%	456	402	113.43%
10	253	245	103.27%	161	157	102.55%	414	402	102.99%
11	261	245	106.53%	167	157	106.37%	428	402	106.47%
12	261	245	106.53%	196	157	124.84%	457	402	113.68%
13	255	245	104.08%	187	157	119.11%	442	402	109.95%
14	261	245	106.53%	188	157	119.75%	449	402	111.69%
15	287	245	117.14%	196	157	124.84%	483	402	120.15%
16	281	245	114.69%	167	157	106.37%	448	402	111.44%
17	245	245	100.00%	212	157	135.03%	457	402	113.68%
18	239	245	97.55%	208	157	132.48%	447	402	111.19%
19	216	245	88.16%	185	157	117.83%	401	402	99.75%
20	226	245	92.24%	177	157	112.74%	403	402	100.25%
21	232	245	94.69%	178	157	113.38%	410	402	101.99%
22	227	245	92.65%	150	157	95.54%	377	402	93.78%
23	221	245	90.20%	162	157	103.18%	383	402	95.27%
24	230	245	93.88%	209	157	133.12%	439	402	109.20%
25	229	245	93.47%	206	157	131.21%	435	402	108.21%
26	214	245	87.35%	177	157	112.74%	391	402	97.26%
27	215	245	87.76%	204	157	129.94%	419	402	104.23%
28	216	245	88.16%	204	157	129.94%	420	402	104.48%
29	232	245	94.69%	188	157	119.75%	420	402	104.48%
30	238	245	97.14%	235	157	149.68%	473	402	117.66%
31	241	245	98.37%	213	157	135.67%	454	402	112.94%

\* Dog Kennel Built Capacity includes Kennels AD, A, B, C, and D (E & F are excluded as medical treatment areas only)

\*\* Cat Cages Built Capacity includes all Lobby Cages plus holding cages in rooms I, J & K

### June 2019 Shelter Population Trends

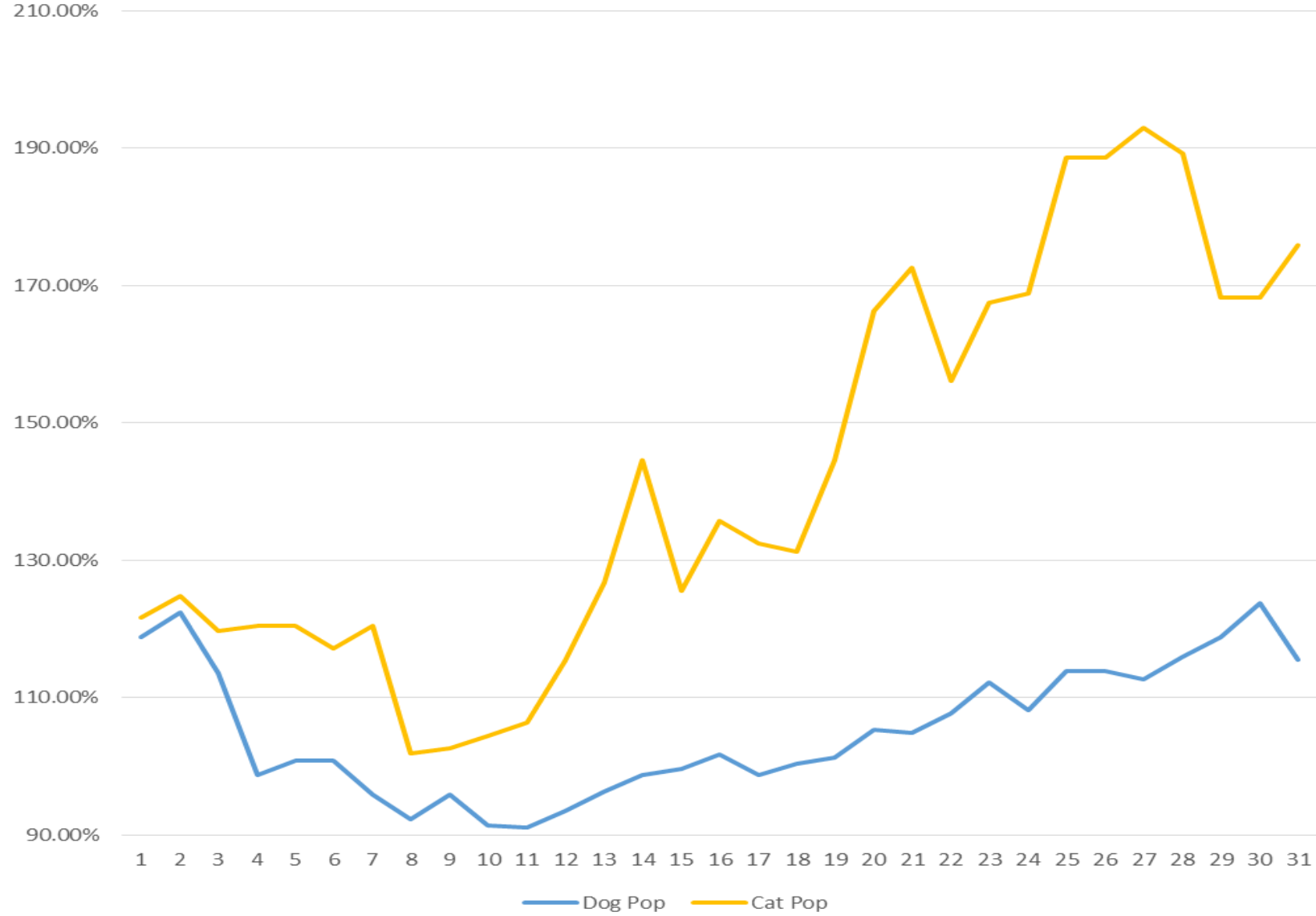


DATE	Dog Pop	Cat Pop	Shelter Pop
1	96.73%	144.59%	115.42%
2	101.63%	133.76%	114.18%
3	106.53%	138.22%	118.91%
4	108.98%	136.94%	119.90%
5	102.86%	138.22%	116.67%
6	104.49%	152.87%	123.38%
7	104.49%	161.15%	126.62%
8	111.43%	147.77%	125.62%
9	110.61%	138.22%	121.39%
10	112.24%	119.75%	115.17%
11	115.51%	119.75%	117.16%
12	105.71%	133.12%	116.42%
13	102.04%	141.40%	117.41%
14	95.51%	139.49%	112.69%
15	97.55%	146.50%	116.67%
16	101.63%	155.41%	122.64%
17	104.49%	145.86%	120.65%
18	109.80%	140.76%	121.89%
19	107.35%	140.13%	120.15%
20	109.39%	168.15%	132.34%
21	110.20%	174.52%	135.32%
22	109.80%	170.70%	133.58%
23	112.65%	156.69%	129.85%
24	117.14%	129.94%	122.14%
25	117.96%	134.39%	124.38%
26	113.47%	130.57%	120.15%
27	111.84%	145.86%	125.12%
28	112.24%	142.04%	123.88%
29	115.92%	131.85%	122.14%
30	116.33%	135.03%	123.63%

June 2019 PRC Shelter Population Trends

DATE	DOG POP	DOG KENNELS	POP/KENNELS	CAT POP	CAT CAGES	POP/KENNELS	TOTAL POP	TOTAL KENNEL	POP/KENNELS
1	237	245	96.73%	227	157	144.59%	464	402	115.42%
2	249	245	101.63%	210	157	133.76%	459	402	114.18%
3	261	245	106.53%	217	157	138.22%	478	402	118.91%
4	267	245	108.98%	215	157	136.94%	482	402	119.90%
5	252	245	102.86%	217	157	138.22%	469	402	116.67%
6	256	245	104.49%	240	157	152.87%	496	402	123.38%
7	256	245	104.49%	253	157	161.15%	509	402	126.62%
8	273	245	111.43%	232	157	147.77%	505	402	125.62%
9	271	245	110.61%	217	157	138.22%	488	402	121.39%
10	275	245	112.24%	188	157	119.75%	463	402	115.17%
11	283	245	115.51%	188	157	119.75%	471	402	117.16%
12	259	245	105.71%	209	157	133.12%	468	402	116.42%
13	250	245	102.04%	222	157	141.40%	472	402	117.41%
14	234	245	95.51%	219	157	139.49%	453	402	112.69%
15	239	245	97.55%	230	157	146.50%	469	402	116.67%
16	249	245	101.63%	244	157	155.41%	493	402	122.64%
17	256	245	104.49%	229	157	145.86%	485	402	120.65%
18	269	245	109.80%	221	157	140.76%	490	402	121.89%
19	263	245	107.35%	220	157	140.13%	483	402	120.15%
20	268	245	109.39%	264	157	168.15%	532	402	132.34%
21	270	245	110.20%	274	157	174.52%	544	402	135.32%
22	269	245	109.80%	268	157	170.70%	537	402	133.58%
23	276	245	112.65%	246	157	156.69%	522	402	129.85%
24	287	245	117.14%	204	157	129.94%	491	402	122.14%
25	289	245	117.96%	211	157	134.39%	500	402	124.38%
26	278	245	113.47%	205	157	130.57%	483	402	120.15%
27	274	245	111.84%	229	157	145.86%	503	402	125.12%
28	275	245	112.24%	223	157	142.04%	498	402	123.88%
29	284	245	115.92%	207	157	131.85%	491	402	122.14%
30	285	245	116.33%	212	157	135.03%	497	402	123.63%
*	Dog Kennel Built Capacity includes Kennels AD, A, B, C, and D (E & F are excluded as medical treatment areas only)								
**	Cat Cages Built Capacity includes all Lobby Cages plus holding cages in rooms I, J & K								

### July 2019 Shelter Population Trends



DATE	Dog Pop	Cat Pop	Shelter Pop
1	118.78%	121.66%	119.90%
2	122.45%	124.84%	123.38%
3	113.47%	119.75%	115.92%
4	98.78%	120.38%	107.21%
5	100.82%	120.38%	108.46%
6	100.82%	117.20%	107.21%
7	95.92%	120.38%	105.47%
8	92.24%	101.91%	96.02%
9	95.92%	102.55%	98.51%
10	91.43%	104.46%	96.52%
11	91.02%	106.37%	97.01%
12	93.47%	115.29%	101.99%
13	96.33%	126.75%	108.21%
14	98.78%	144.59%	116.67%
15	99.59%	125.48%	109.70%
16	101.63%	135.67%	114.93%
17	98.78%	132.48%	111.94%
18	100.41%	131.21%	112.44%
19	101.22%	144.59%	118.16%
20	105.31%	166.24%	129.10%
21	104.90%	172.61%	131.34%
22	107.76%	156.05%	126.62%
23	112.24%	167.52%	133.83%
24	108.16%	168.79%	131.84%
25	113.88%	188.54%	143.03%
26	113.88%	188.54%	143.03%
27	112.65%	192.99%	144.03%
28	115.92%	189.17%	144.53%
29	118.78%	168.15%	138.06%
30	123.67%	168.15%	141.04%
31	115.51%	175.80%	139.05%

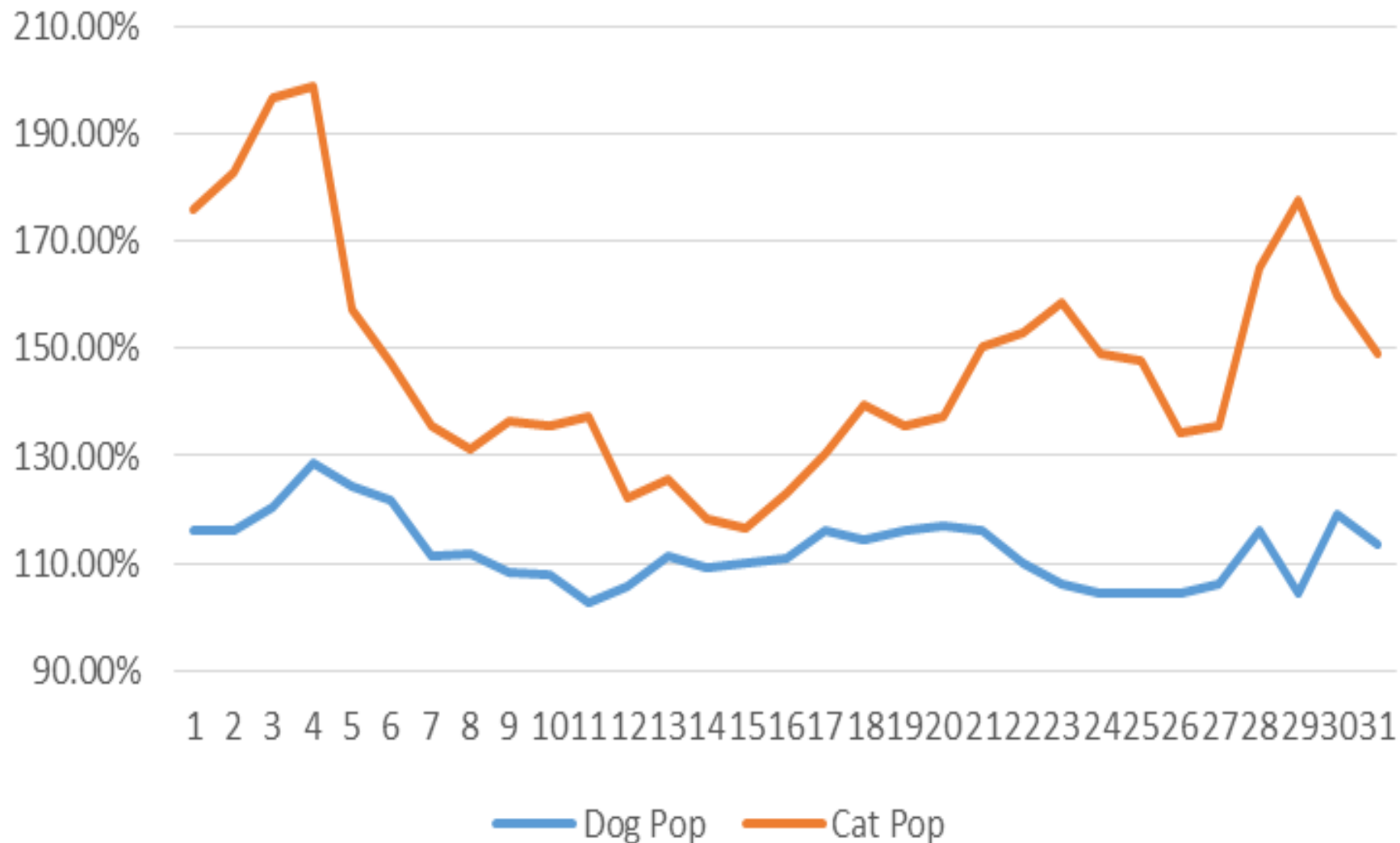
July 2019 PRC Shelter Population Trends

DATE	DOG POP	DOG KENNELS	POP/KENNELS	CAT POP	CAT CAGES	POP/KENNELS	TOTAL POP	TOTAL KENNEL	POP/KENNELS
1	291	245	118.78%	191	157	121.66%	482	402	119.90%
2	300	245	122.45%	196	157	124.84%	496	402	123.38%
3	278	245	113.47%	188	157	119.75%	466	402	115.92%
4	242	245	98.78%	189	157	120.38%	431	402	107.21%
5	247	245	100.82%	189	157	120.38%	436	402	108.46%
6	247	245	100.82%	184	157	117.20%	431	402	107.21%
7	235	245	95.92%	189	157	120.38%	424	402	105.47%
8	226	245	92.24%	160	157	101.91%	386	402	96.02%
9	235	245	95.92%	161	157	102.55%	396	402	98.51%
10	224	245	91.43%	164	157	104.46%	388	402	96.52%
11	223	245	91.02%	167	157	106.37%	390	402	97.01%
12	229	245	93.47%	181	157	115.29%	410	402	101.99%
13	236	245	96.33%	199	157	126.75%	435	402	108.21%
14	242	245	98.78%	227	157	144.59%	469	402	116.67%
15	244	245	99.59%	197	157	125.48%	441	402	109.70%
16	249	245	101.63%	213	157	135.67%	462	402	114.93%
17	242	245	98.78%	208	157	132.48%	450	402	111.94%
18	246	245	100.41%	206	157	131.21%	452	402	112.44%
19	248	245	101.22%	227	157	144.59%	475	402	118.16%
20	258	245	105.31%	261	157	166.24%	519	402	129.10%
21	257	245	104.90%	271	157	172.61%	528	402	131.34%
22	264	245	107.76%	245	157	156.05%	509	402	126.62%
23	275	245	112.24%	263	157	167.52%	538	402	133.83%
24	265	245	108.16%	265	157	168.79%	530	402	131.84%
25	279	245	113.88%	296	157	188.54%	575	402	143.03%
26	279	245	113.88%	296	157	188.54%	575	402	143.03%
27	276	245	112.65%	303	157	192.99%	579	402	144.03%
28	284	245	115.92%	297	157	189.17%	581	402	144.53%
29	291	245	118.78%	264	157	168.15%	555	402	138.06%
30	303	245	123.67%	264	157	168.15%	567	402	141.04%
31	283	245	115.51%	276	157	175.80%	559	402	139.05%

\* Dog Kennel Built Capacity includes Kennels AD, A, B, C, and D (E & F are excluded as medical treatment areas only)

\*\* Cat Cages Built Capacity includes all Lobby Cages plus holding cages in rooms I, J & K

## August 2019 PRC Population Trends



DATE	Dog Pop	Cat Pop	Shelter Pop
1	115.92%	175.80%	139.30%
2	115.92%	182.80%	142.04%
3	120.41%	196.82%	150.25%
4	128.57%	198.73%	155.97%
5	124.49%	157.32%	137.31%
6	121.63%	147.13%	131.59%
7	111.43%	135.67%	120.90%
8	111.84%	131.21%	119.40%
9	108.16%	136.31%	119.15%
10	107.76%	135.67%	118.66%
11	102.86%	137.58%	116.42%
12	105.71%	122.29%	112.19%
13	111.43%	125.48%	116.92%
14	109.39%	118.47%	112.94%
15	110.20%	116.56%	112.69%
16	111.02%	122.93%	115.67%
17	115.92%	130.57%	121.64%
18	114.29%	139.49%	124.13%
19	115.92%	135.67%	123.63%
20	117.14%	137.58%	125.12%
21	115.92%	150.32%	129.35%
22	110.20%	152.87%	126.87%
23	106.12%	158.60%	126.62%
24	104.49%	149.04%	121.89%
25	104.49%	147.77%	121.39%
26	104.49%	134.39%	116.17%
27	106.12%	135.67%	117.66%
28	115.92%	164.97%	135.07%
29	104.49%	177.71%	133.08%
30	119.18%	159.87%	135.07%
31	113.47%	149.04%	127.36%

August 2019 PRC Shelter Population Trends

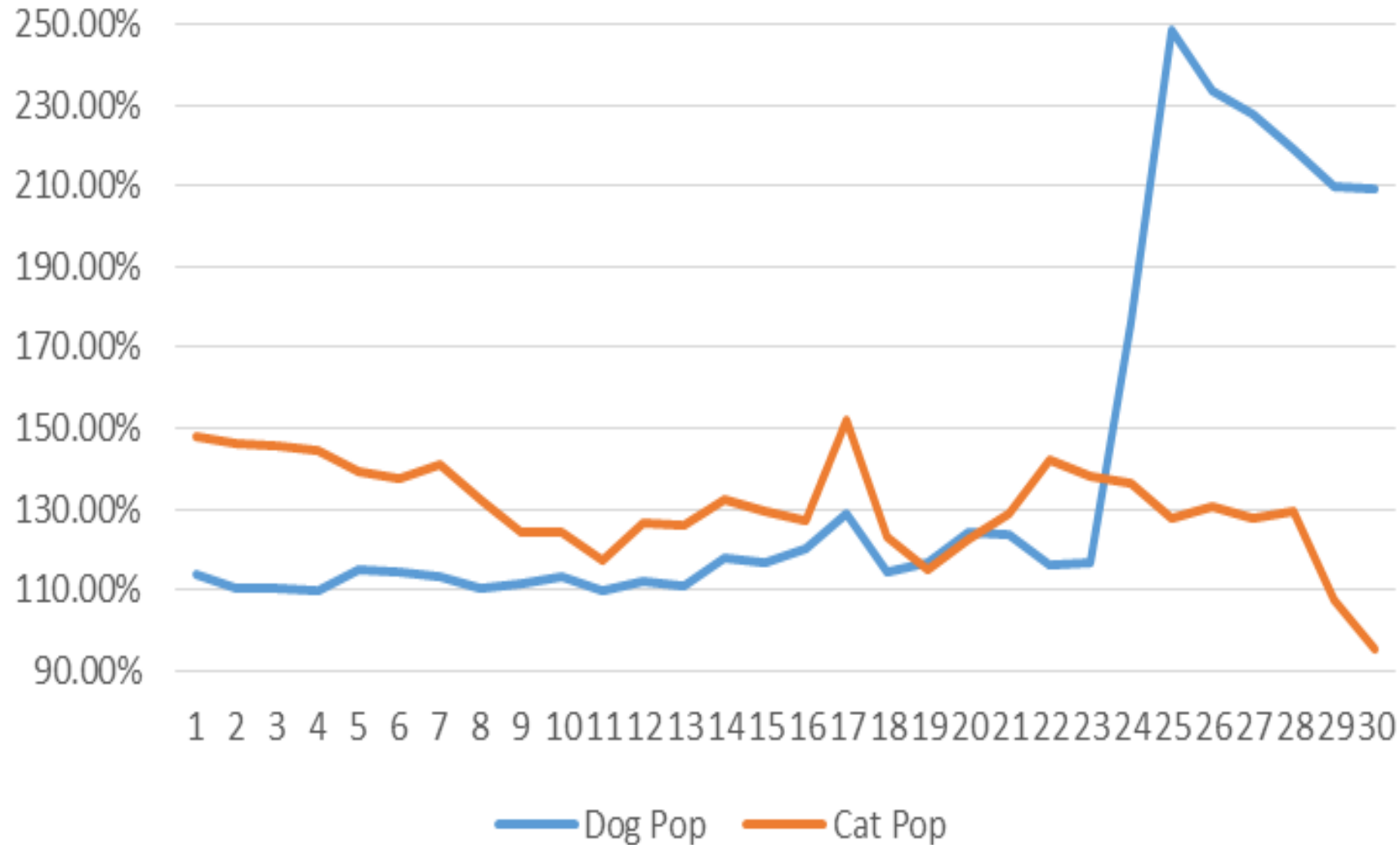
DATE	DOG POP	DOG KENNELS	POP/KENNELS	CAT POP	CAT CAGES	POP/KENNELS	TOTAL POP	TOTAL KENNEL	POP/KENNELS
1	284	245	115.92%	276	157	175.80%	560	402	139.30%
2	284	245	115.92%	287	157	182.80%	571	402	142.04%
3	295	245	120.41%	309	157	196.82%	604	402	150.25%
4	315	245	128.57%	312	157	198.73%	627	402	155.97%
5	305	245	124.49%	247	157	157.32%	552	402	137.31%
6	298	245	121.63%	231	157	147.13%	529	402	131.59%
7	273	245	111.43%	213	157	135.67%	486	402	120.90%
8	274	245	111.84%	206	157	131.21%	480	402	119.40%
9	265	245	108.16%	214	157	136.31%	479	402	119.15%
10	264	245	107.76%	213	157	135.67%	477	402	118.66%
11	252	245	102.86%	216	157	137.58%	468	402	116.42%
12	259	245	105.71%	192	157	122.29%	451	402	112.19%
13	273	245	111.43%	197	157	125.48%	470	402	116.92%
14	268	245	109.39%	186	157	118.47%	454	402	112.94%
15	270	245	110.20%	183	157	116.56%	453	402	112.69%
16	272	245	111.02%	193	157	122.93%	465	402	115.67%
17	284	245	115.92%	205	157	130.57%	489	402	121.64%
18	280	245	114.29%	219	157	139.49%	499	402	124.13%
19	284	245	115.92%	213	157	135.67%	497	402	123.63%
20	287	245	117.14%	216	157	137.58%	503	402	125.12%
21	284	245	115.92%	236	157	150.32%	520	402	129.35%
22	270	245	110.20%	240	157	152.87%	510	402	126.87%
23	260	245	106.12%	249	157	158.60%	509	402	126.62%
24	256	245	104.49%	234	157	149.04%	490	402	121.89%
25	256	245	104.49%	232	157	147.77%	488	402	121.39%
26	256	245	104.49%	211	157	134.39%	467	402	116.17%
27	260	245	106.12%	213	157	135.67%	473	402	117.66%
28	284	245	115.92%	259	157	164.97%	543	402	135.07%
29	256	245	104.49%	279	157	177.71%	535	402	133.08%
30	292	245	119.18%	251	157	159.87%	543	402	135.07%
31	278	245	113.47%	234	157	149.04%	512	402	127.36%

\* Dog Kennel Built Capacity includes Kennels AD, A, B, C, and D (E & F are excluded as medical treatment areas only)

\*\* Cat Cages Built Capacity includes all Lobby Cages plus holding cages in rooms I, J & K



## September 2019 PRC Population Trends

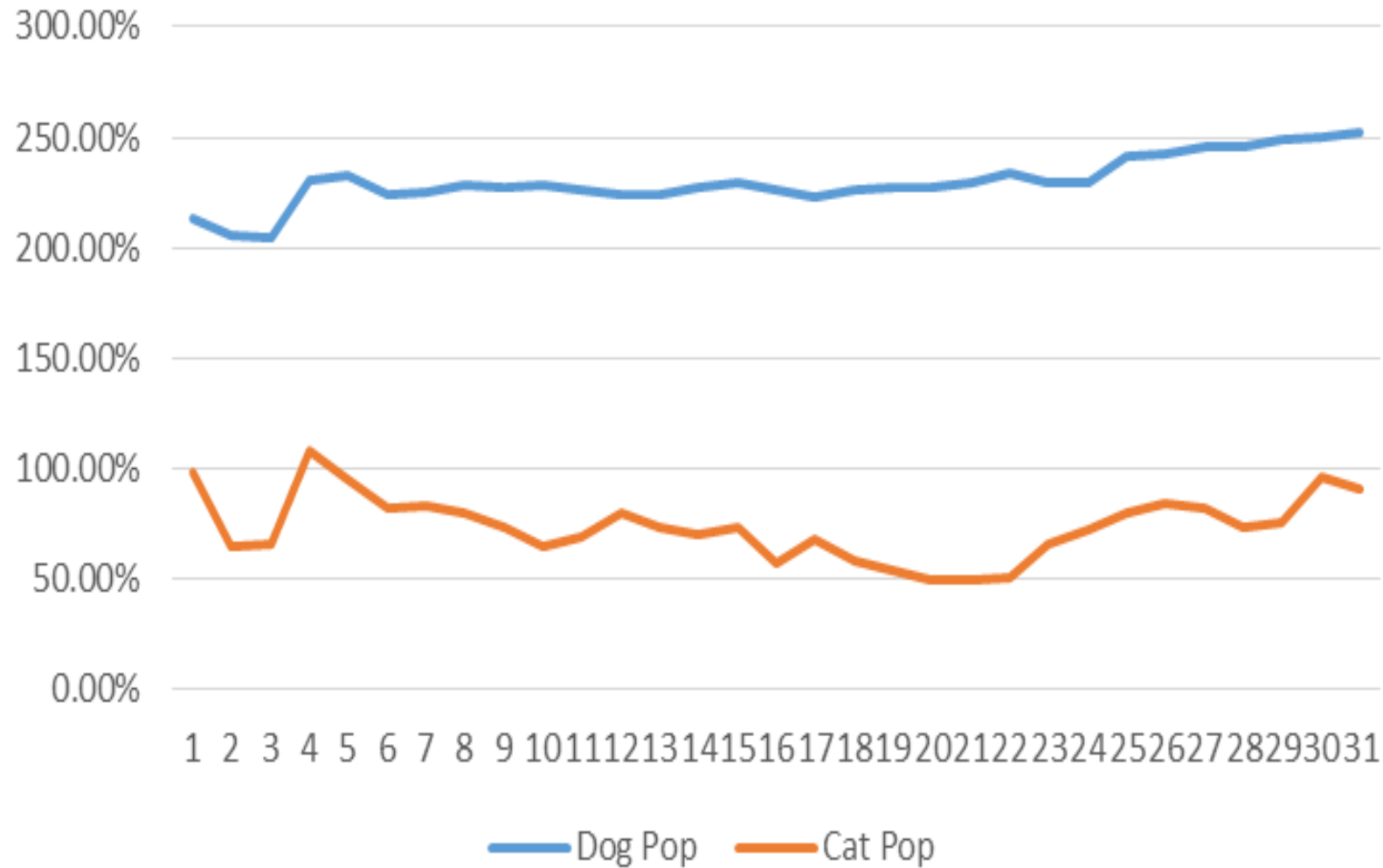


DATE	Dog Pop	Cat Pop	Shelter Pop
1	113.88%	147.77%	127.11%
2	110.61%	146.50%	124.63%
3	110.61%	145.86%	124.38%
4	109.80%	144.59%	123.38%
5	115.10%	139.49%	124.63%
6	114.69%	137.58%	123.63%
7	113.06%	140.76%	123.88%
8	110.20%	132.48%	118.91%
9	111.84%	124.20%	116.67%
10	113.06%	124.20%	117.41%
11	109.80%	117.20%	112.69%
12	112.24%	126.75%	114.18%
13	111.02%	126.11%	117.16%
14	117.96%	132.48%	121.14%
15	116.73%	129.30%	122.89%
16	120.00%	127.39%	123.63%
17	128.98%	152.23%	128.36%
18	114.29%	122.93%	129.10%
19	116.73%	115.29%	119.15%
20	124.08%	122.29%	120.65%
21	123.67%	128.66%	123.13%
22	115.92%	142.04%	120.90%
23	116.73%	138.22%	126.62%
24	176.33%	136.31%	161.44%
25	248.57%	128.03%	204.73%
26	233.47%	130.57%	192.29%
27	227.76%	128.03%	189.80%
28	219.18%	129.30%	183.58%
29	209.80%	107.64%	178.36%
30	209.39%	95.54%	169.65%

September 2019 PRC Shelter Population Trends

DATE	DOG POP	DOG KENNELS	POP/KENNELS	CAT POP	CAT CAGES	POP/KENNELS	TOTAL POP	TOTAL KENNEL	POP/KENNELS
1	279	245	113.88%	232	157	147.77%	511	402	127.11%
2	271	245	110.61%	230	157	146.50%	501	402	124.63%
3	271	245	110.61%	229	157	145.86%	500	402	124.38%
4	269	245	109.80%	227	157	144.59%	496	402	123.38%
5	282	245	115.10%	219	157	139.49%	501	402	124.63%
6	281	245	114.69%	216	157	137.58%	497	402	123.63%
7	277	245	113.06%	221	157	140.76%	498	402	123.88%
8	270	245	110.20%	208	157	132.48%	478	402	118.91%
9	274	245	111.84%	195	157	124.20%	469	402	116.67%
10	277	245	113.06%	195	157	124.20%	472	402	117.41%
11	269	245	109.80%	184	157	117.20%	453	402	112.69%
12	275	245	112.24%	199	157	126.75%	459	402	114.18%
13	272	245	111.02%	198	157	126.11%	471	402	117.16%
14	289	245	117.96%	208	157	132.48%	487	402	121.14%
15	286	245	116.73%	203	157	129.30%	494	402	122.89%
16	294	245	120.00%	200	157	127.39%	497	402	123.63%
17	316	245	128.98%	239	157	152.23%	516	402	128.36%
18	280	245	114.29%	193	157	122.93%	519	402	129.10%
19	286	245	116.73%	181	157	115.29%	479	402	119.15%
20	304	245	124.08%	192	157	122.29%	485	402	120.65%
21	303	245	123.67%	202	157	128.66%	495	402	123.13%
22	284	245	115.92%	223	157	142.04%	486	402	120.90%
23	286	245	116.73%	217	157	138.22%	509	402	126.62%
24	432	245	176.33%	214	157	136.31%	649	402	161.44%
25	609	245	248.57%	201	157	128.03%	823	402	204.73%
26	572	245	233.47%	205	157	130.57%	773	402	192.29%
27	558	245	227.76%	201	157	128.03%	763	402	189.80%
28	537	245	219.18%	203	157	129.30%	738	402	183.58%
29	514	245	209.80%	169	157	107.64%	717	402	178.36%
30	513	245	209.39%	150	157	95.54%	682	402	169.65%
*	Dog Kennel Built Capacity includes Kennels AD, A, B, C, and D (E & F are excluded as medical treatment areas only)								
**	Cat Cages Built Capacity includes all Lobby Cages plus holding cages in rooms I, J & K								

## October 2019 Shelter Population Trends



DATE	Dog Pop	Cat Pop	Shelter Pop
1	213.47%	98.09%	168.41%
2	206.12%	64.97%	151.00%
3	204.90%	65.61%	150.50%
4	230.20%	107.64%	182.34%
5	232.65%	95.54%	179.10%
6	224.49%	82.17%	168.91%
7	224.90%	83.44%	169.65%
8	228.57%	79.62%	170.40%
9	226.94%	73.25%	166.92%
10	228.57%	64.97%	164.68%
11	225.71%	68.79%	164.43%
12	224.49%	80.25%	168.16%
13	224.08%	73.89%	165.42%
14	226.94%	70.06%	165.67%
15	229.80%	73.25%	168.66%
16	225.71%	56.69%	159.70%
17	222.86%	67.52%	162.19%
18	225.71%	57.96%	160.20%
19	227.35%	53.50%	159.45%
20	226.94%	49.04%	157.46%
21	228.98%	49.68%	158.96%
22	233.47%	50.96%	162.19%
23	228.98%	65.61%	165.17%
24	229.80%	72.61%	168.41%
25	241.22%	79.62%	178.11%
26	242.45%	84.71%	180.85%
27	245.31%	82.17%	181.59%
28	245.31%	73.89%	178.36%
29	249.39%	75.16%	181.34%
30	249.80%	96.18%	189.80%
31	252.65%	90.45%	189.30%

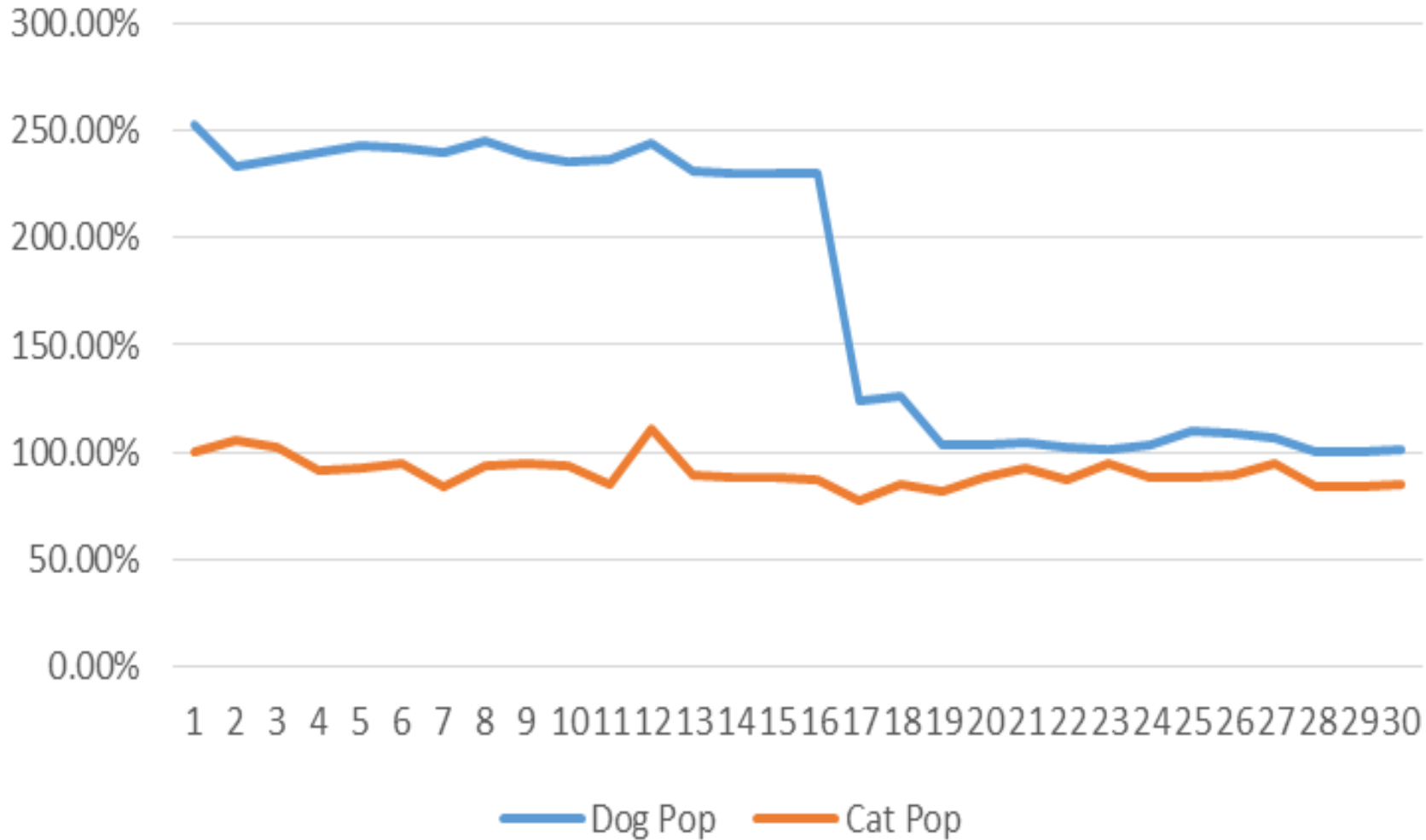
October 2019 PRC Shelter Population Trends

DATE	DOG POP	DOG KENNELS	POP/KENNELS	CAT POP	CAT CAGES	POP/KENNELS	TOTAL POP	TOTAL KENNEL	POP/KENNELS
1	523	245	213.47%	154	157	98.09%	677	402	168.41%
2	505	245	206.12%	102	157	64.97%	607	402	151.00%
3	502	245	204.90%	103	157	65.61%	605	402	150.50%
4	564	245	230.20%	169	157	107.64%	733	402	182.34%
5	570	245	232.65%	150	157	95.54%	720	402	179.10%
6	550	245	224.49%	129	157	82.17%	679	402	168.91%
7	551	245	224.90%	131	157	83.44%	682	402	169.65%
8	560	245	228.57%	125	157	79.62%	685	402	170.40%
9	556	245	226.94%	115	157	73.25%	671	402	166.92%
10	560	245	228.57%	102	157	64.97%	662	402	164.68%
11	553	245	225.71%	108	157	68.79%	661	402	164.43%
12	550	245	224.49%	126	157	80.25%	676	402	168.16%
13	549	245	224.08%	116	157	73.89%	665	402	165.42%
14	556	245	226.94%	110	157	70.06%	666	402	165.67%
15	563	245	229.80%	115	157	73.25%	678	402	168.66%
16	553	245	225.71%	89	157	56.69%	642	402	159.70%
17	546	245	222.86%	106	157	67.52%	652	402	162.19%
18	553	245	225.71%	91	157	57.96%	644	402	160.20%
19	557	245	227.35%	84	157	53.50%	641	402	159.45%
20	556	245	226.94%	77	157	49.04%	633	402	157.46%
21	561	245	228.98%	78	157	49.68%	639	402	158.96%
22	572	245	233.47%	80	157	50.96%	652	402	162.19%
23	561	245	228.98%	103	157	65.61%	664	402	165.17%
24	563	245	229.80%	114	157	72.61%	677	402	168.41%
25	591	245	241.22%	125	157	79.62%	716	402	178.11%
26	594	245	242.45%	133	157	84.71%	727	402	180.85%
27	601	245	245.31%	129	157	82.17%	730	402	181.59%
28	601	245	245.31%	116	157	73.89%	717	402	178.36%
29	611	245	249.39%	118	157	75.16%	729	402	181.34%
30	612	245	249.80%	151	157	96.18%	763	402	189.80%
31	619	245	252.65%	142	157	90.45%	761	402	189.30%

\* Dog Kennel Built Capacity includes Kennels AD, A, B, C, and D (E & F are excluded as medical treatment areas only)

\*\* Cat Cages Built Capacity includes all Lobby Cages plus holding cages in rooms I, J & K

# November 2019 Shelter Population Trends

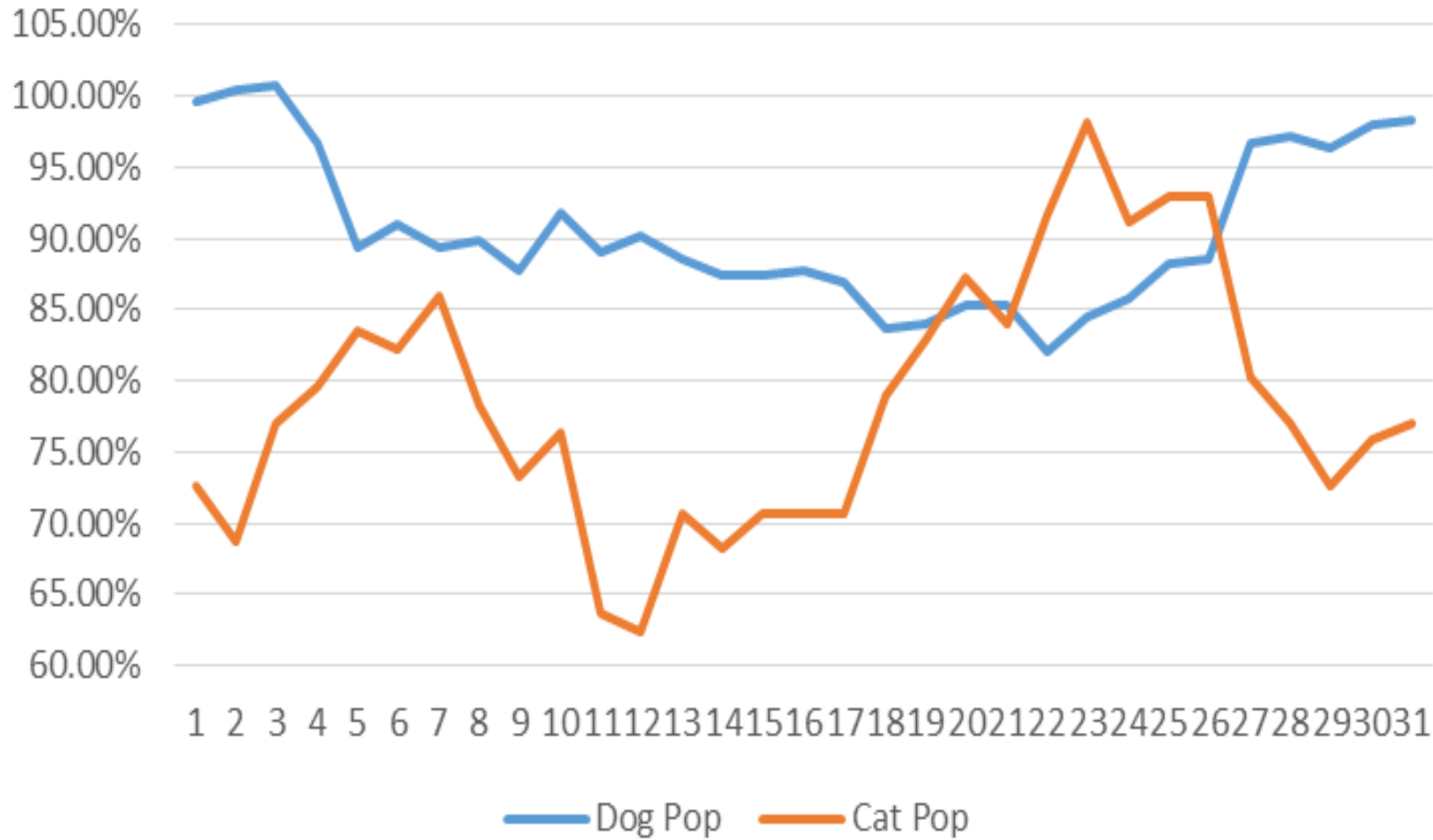


DATE	Dog Pop	Cat Pop	Shelter Pop
1	253.06%	100.00%	193.28%
2	233.88%	105.10%	183.58%
3	236.33%	102.55%	184.08%
4	240.41%	91.72%	182.34%
5	242.86%	92.36%	184.08%
6	242.45%	94.90%	184.83%
7	239.59%	83.44%	178.61%
8	245.71%	93.63%	186.32%
9	238.37%	94.90%	182.34%
10	235.92%	93.63%	180.35%
11	236.73%	85.35%	177.61%
12	244.49%	110.83%	192.29%
13	231.02%	89.17%	175.62%
14	229.80%	88.54%	174.63%
15	230.20%	88.54%	174.88%
16	229.80%	87.26%	174.13%
17	123.67%	77.07%	105.47%
18	125.71%	85.35%	109.95%
19	102.86%	81.53%	94.53%
20	103.67%	88.54%	97.76%
21	104.49%	92.99%	100.00%
22	102.45%	86.62%	96.27%
23	101.63%	94.90%	99.00%
24	103.27%	87.90%	97.26%
25	109.80%	88.54%	101.49%
26	108.57%	89.81%	101.24%
27	106.12%	94.27%	101.49%
28	100.41%	84.08%	94.03%
29	100.41%	84.08%	94.03%
30	101.22%	84.71%	94.78%

November 2019 PRC Shelter Population Trends

DATE	DOG POP	DOG KENNELS	POP/KENNELS	CAT POP	CAT CAGES	POP/KENNELS	TOTAL POP	TOTAL KENNEL	POP/KENNELS
1	620	245	253.06%	157	157	100.00%	777	402	193.28%
2	573	245	233.88%	165	157	105.10%	738	402	183.58%
3	579	245	236.33%	161	157	102.55%	740	402	184.08%
4	589	245	240.41%	144	157	91.72%	733	402	182.34%
5	595	245	242.86%	145	157	92.36%	740	402	184.08%
6	594	245	242.45%	149	157	94.90%	743	402	184.83%
7	587	245	239.59%	131	157	83.44%	718	402	178.61%
8	602	245	245.71%	147	157	93.63%	749	402	186.32%
9	584	245	238.37%	149	157	94.90%	733	402	182.34%
10	578	245	235.92%	147	157	93.63%	725	402	180.35%
11	580	245	236.73%	134	157	85.35%	714	402	177.61%
12	599	245	244.49%	174	157	110.83%	773	402	192.29%
13	566	245	231.02%	140	157	89.17%	706	402	175.62%
14	563	245	229.80%	139	157	88.54%	702	402	174.63%
15	564	245	230.20%	139	157	88.54%	703	402	174.88%
16	563	245	229.80%	137	157	87.26%	700	402	174.13%
17	303	245	123.67%	121	157	77.07%	424	402	105.47%
18	308	245	125.71%	134	157	85.35%	442	402	109.95%
19	252	245	102.86%	128	157	81.53%	380	402	94.53%
20	254	245	103.67%	139	157	88.54%	393	402	97.76%
21	256	245	104.49%	146	157	92.99%	402	402	100.00%
22	251	245	102.45%	136	157	86.62%	387	402	96.27%
23	249	245	101.63%	149	157	94.90%	398	402	99.00%
24	253	245	103.27%	138	157	87.90%	391	402	97.26%
25	269	245	109.80%	139	157	88.54%	408	402	101.49%
26	266	245	108.57%	141	157	89.81%	407	402	101.24%
27	260	245	106.12%	148	157	94.27%	408	402	101.49%
28	246	245	100.41%	132	157	84.08%	378	402	94.03%
29	246	245	100.41%	132	157	84.08%	378	402	94.03%
30	248	245	101.22%	133	157	84.71%	381	402	94.78%
*	Dog Kennel Built Capacity includes Kennels AD, A, B, C, and D (E & F are excluded as medical treatment areas only)								
**	Cat Cages Built Capacity includes all Lobby Cages plus holding cages in rooms I, J & K								

# December 2019 Shelter Population Trends



DATE	Dog Pop	Cat Pop	Shelter Pop
1	99.59%	72.61%	89.05%
2	100.41%	68.79%	88.06%
3	100.82%	77.07%	91.54%
4	96.73%	79.62%	90.05%
5	89.39%	83.44%	87.06%
6	91.02%	82.17%	87.56%
7	89.39%	85.99%	88.06%
8	89.80%	78.34%	85.32%
9	87.76%	73.25%	82.09%
10	91.84%	76.43%	85.82%
11	88.98%	63.69%	79.10%
12	90.20%	62.42%	79.35%
13	88.57%	70.70%	81.59%
14	87.35%	68.15%	79.85%
15	87.35%	70.70%	80.85%
16	87.76%	70.70%	81.09%
17	86.94%	70.70%	80.60%
18	83.67%	78.98%	81.84%
19	84.08%	82.80%	83.58%
20	85.31%	87.26%	86.07%
21	85.31%	84.08%	84.83%
22	82.04%	91.72%	85.82%
23	84.49%	98.09%	89.80%
24	85.71%	91.08%	87.81%
25	88.16%	92.99%	90.05%
26	88.57%	92.99%	90.30%
27	96.73%	80.25%	90.30%
28	97.14%	77.07%	89.30%
29	96.33%	72.61%	87.06%
30	97.96%	75.80%	89.30%
31	98.37%	77.07%	90.05%

December 2019 PRC Shelter Population Trends

DATE	DOG POP	DOG KENNELS	POP/KENNELS	CAT POP	CAT CAGES	POP/KENNELS	TOTAL POP	TOTAL KENNEL	POP/KENNELS
1	244	245	99.59%	114	157	72.61%	358	402	89.05%
2	246	245	100.41%	108	157	68.79%	354	402	88.06%
3	247	245	100.82%	121	157	77.07%	368	402	91.54%
4	237	245	96.73%	125	157	79.62%	362	402	90.05%
5	219	245	89.39%	131	157	83.44%	350	402	87.06%
6	223	245	91.02%	129	157	82.17%	352	402	87.56%
7	219	245	89.39%	135	157	85.99%	354	402	88.06%
8	220	245	89.80%	123	157	78.34%	343	402	85.32%
9	215	245	87.76%	115	157	73.25%	330	402	82.09%
10	225	245	91.84%	120	157	76.43%	345	402	85.82%
11	218	245	88.98%	100	157	63.69%	318	402	79.10%
12	221	245	90.20%	98	157	62.42%	319	402	79.35%
13	217	245	88.57%	111	157	70.70%	328	402	81.59%
14	214	245	87.35%	107	157	68.15%	321	402	79.85%
15	214	245	87.35%	111	157	70.70%	325	402	80.85%
16	215	245	87.76%	111	157	70.70%	326	402	81.09%
17	213	245	86.94%	111	157	70.70%	324	402	80.60%
18	205	245	83.67%	124	157	78.98%	329	402	81.84%
19	206	245	84.08%	130	157	82.80%	336	402	83.58%
20	209	245	85.31%	137	157	87.26%	346	402	86.07%
21	209	245	85.31%	132	157	84.08%	341	402	84.83%
22	201	245	82.04%	144	157	91.72%	345	402	85.82%
23	207	245	84.49%	154	157	98.09%	361	402	89.80%
24	210	245	85.71%	143	157	91.08%	353	402	87.81%
25	216	245	88.16%	146	157	92.99%	362	402	90.05%
26	217	245	88.57%	146	157	92.99%	363	402	90.30%
27	237	245	96.73%	126	157	80.25%	363	402	90.30%
28	238	245	97.14%	121	157	77.07%	359	402	89.30%
29	236	245	96.33%	114	157	72.61%	350	402	87.06%
30	240	245	97.96%	119	157	75.80%	359	402	89.30%
31	241	245	98.37%	121	157	77.07%	362	402	90.05%

\* Dog Kennel Built Capacity includes Kennels AD, A, B, C, and D (E & F are excluded as medical treatment areas only)

\*\* Cat Cages Built Capacity includes all Lobby Cages plus holding cages in rooms I, J & K



2019 Annual PRC Shelter Population Trends

