



**Hillsborough
County Florida**

WATER RESOURCES

PO Box 1110, Tampa, FL 33601-1110
813-272-5977

Public Utilities Technical Bulletin – 22-001

Revision to Water Resources Technical Specifications

Date: February 4, 2022

Subject: Revision of Hillsborough County Specification 331002 Exhibits W-2A and W-2B

Summary: This revision corrects the Water Exhibits W-2A & W-2B

Specifics: Replace the current County Water Exhibits W-2A and W-2B. Back Flow Protection for Dedicated Fire Connections with the attached Exhibits dated 02/2022.

Please contact Kathryn L. McAuliffe at 813-612-7764 if you have any questions about this Technical Bulletin.

Robert Tisdale

Robert H. Tisdale, P.E.
Utility Design Section Manager

02/04/2022

Effective Date

**BOARD OF COUNTY
COMMISSIONERS**

Harry Cohen
Ken Hagan
Pat Kemp

Gwendolyn "Gwen" Myers
Kimberly Overman
Mariella Smith
Stacy R. White

COUNTY ADMINISTRATOR

Bonnie M. Wise

COUNTY ATTORNEY

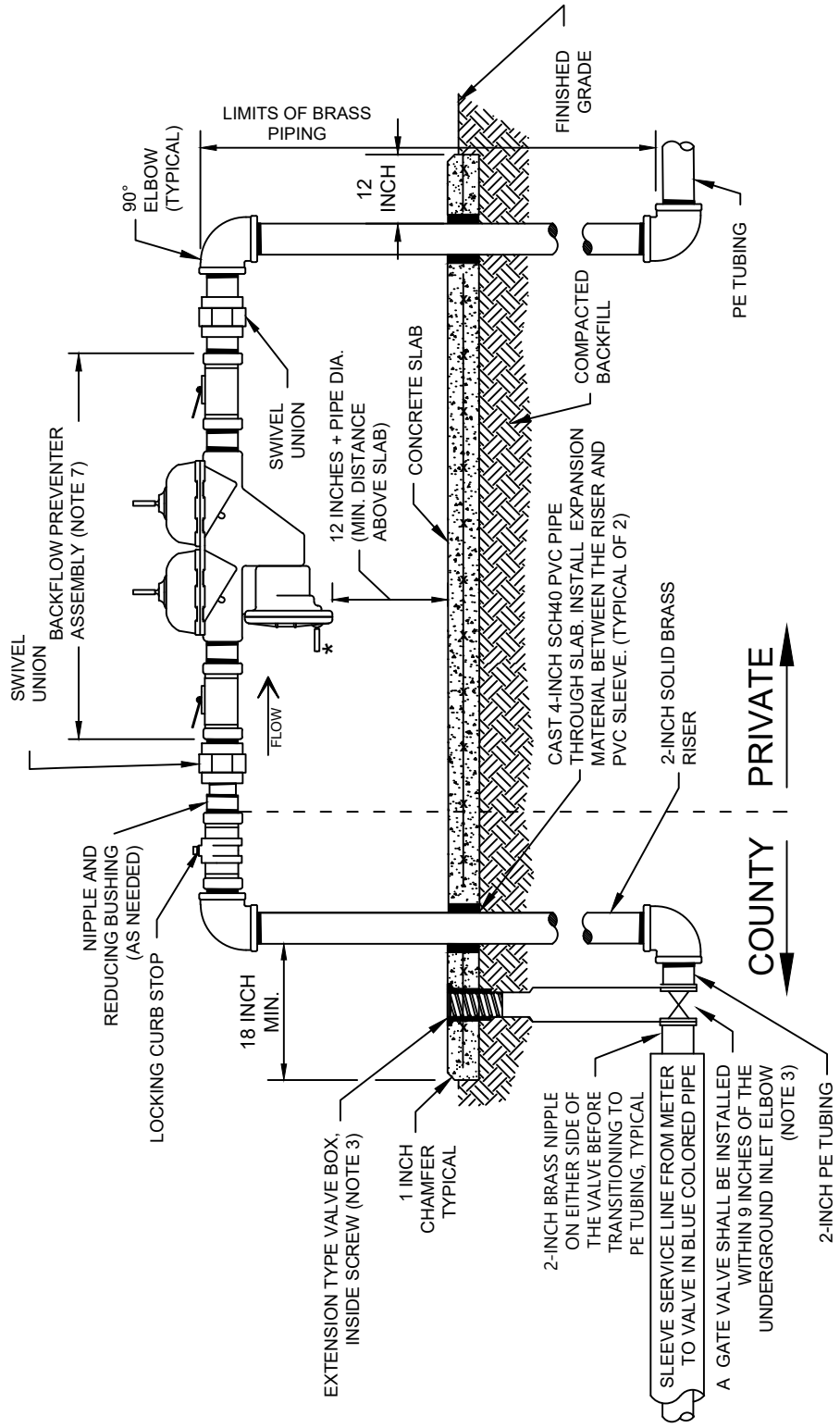
Christine M. Beck

COUNTY INTERNAL AUDITOR

Peggy Caskey

ASSISTANT COUNTY ADMINISTRATOR

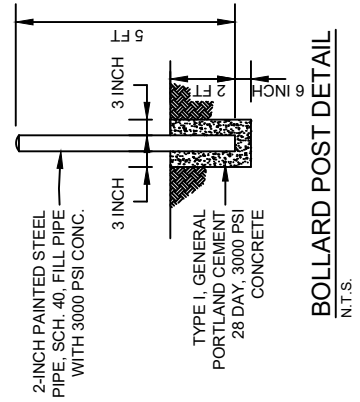
George Cassidy



* RELIEF VALVE DISCHARGE TO BE ABOVE 100 YEAR FLOOD PLAIN

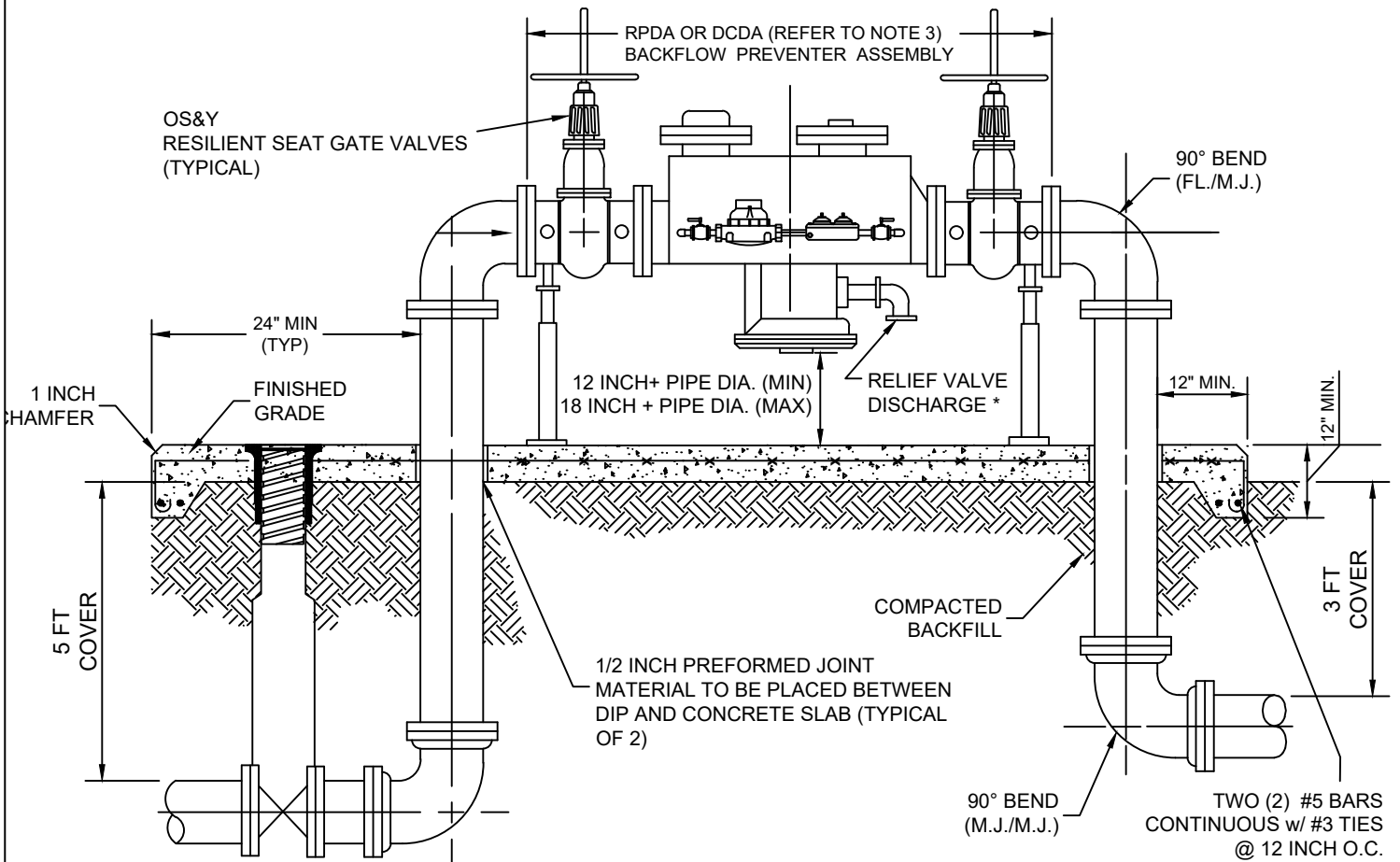
NOTES:

1. ALL PIPING TO BE A MINIMUM OF 2 INCHES UP THROUGH THE LOCKING CURB STOP.
2. 2-INCH COMMERCIAL SERVICE LINES SHALL USE A 2-INCH SADDLE & TAPPING VALVE (INSTEAD OF A CORPORATION STOP) AT THE WATER MAIN CONNECTION. WHEN THE TAPPING VALVE IS LOCATED WITHIN 10 FEET OF THE METER ASSEMBLY RISER, AND IT MEETS PUD SAFETY CRITERIA, THE 2-INCH GATE VALVE AT THE ASSEMBLY MAY BE ELIMINATED BY SPECIAL REQUEST TO DSD.
3. FOUR BOLLARDS, TO PROTECT ASSEMBLY.
4. SEE EXHIBIT W-1G FOR GENERAL NOTES.
5. JOINTS BETWEEN DIFFERING MATERIALS SHALL BE ISOLATED PER THE FLORIDA PLUMBING CODE.
6. ALL BACKFLOW ASSEMBLIES OR DEVICES SHALL BE IN ACCORDANCE WITH AND SHALL MEET THE REQUIREMENTS FOUND IN CHAPTER 121 OF THE HILLSBOROUGH COUNTY CODE OF ORDINANCES, PART B, PUBLIC UTILITIES. APPROVAL TO USE DC REQUIRES CERTIFICATION THE DC MEETS THE CRITERIA LISTED IN THE CROSS-CONNECTION CONTROL PLAN.(ORDINANCE 15-26).
- 7.



**DEDICATED FIRE SERVICE CONNECTION
BACKFLOW ASSEMBLY - 2-INCH AND LESS
HILLSBOROUGH COUNTY, FLORIDA**

02/2022
SCALE: N.T.S.



ALL ABOVE GRADE VALVES TO BE OS&Y

* DISCHARGE ABOVE 100 YEAR FLOOD PLAIN

NOTES:

1. ALL PIPE AND FITTINGS SHALL BE DUCTILE IRON, CLASS 53, CEMENT LINED INTERIOR WITH FLANGE FITTINGS FOR ABOVE GROUND USE. MANUFACTURERS RESTRAINED JOINTS SHALL BE USED FOR UNDERGROUND PIPING.
2. CERTIFICATION OF PROPER INSTALLATION AND OPERATION WILL BE REQUIRED FROM THE ENGINEER OF RECORD PRIOR TO WATER MAIN ACCEPTANCE BY THE HILLSBOROUGH COUNTY PUBLIC UTILITIES DEPARTMENT. THE ASSEMBLY SHALL ALSO BE TESTED BY A CERTIFIED TESTER, AS REQUIRED BY THE POINT OF SERVICE BACKFLOW ASSEMBLY PERMIT.
3. ALL BACKFLOW ASSEMBLIES OR DEVICES SHALL BE IN ACCORDANCE WITH AND SHALL MEET THE REQUIREMENTS FOUND IN CHAPTER 121 OF THE HILLSBOROUGH COUNTY CODE OF ORDINANCES, PART B, PUBLIC UTILITIES. APPROVAL TO USE DCDA REQUIRES CERTIFICATION THE DCDA MEETS THE CRITERIA LISTED IN THE CROSS-CONNECTION CONTROL PLAN.(ORDINANCE 15-26).
4. THE PROPERTY OWNER SHALL BE RESPONSIBLE FOR THE PROPER OPERATION, MAINTENANCE AND TESTING OF THE BACKFLOW PREVENTION ASSEMBLY.
5. THE 6 INCH CONCRETE SLAB SHALL BE REINFORCED WITH 6x6-W1.4xW1.4 WELDED WIRE FABRIC AND SHALL BE TYPE I, PORTLAND CEMENT WITH A MINIMUM 28-DAY STRENGTH OF 3000psi.
6. SLAB WIDTH SHALL BE 5 FT TYPICAL AND LENGTH SHALL VARY WITH ASSEMBLY.
7. WHEN ASSEMBLY IS LOCATED WITHIN A TRAFFIC/VEHICLE AREA SEE W-1D FOR BOLLARD LAYOUT. A MINIMUM OF (4) FOUR 6 INCH BOLLARDS ARE REQUIRED.

**BACKFLOW PREVENTION DEVICE RPDA
(FOR FIRE SERVICE ONLY)**

02/2022

HILLSBOROUGH COUNTY, FLORIDA

SCALE: N.T.S.